

Quick Installation Guide



WLTMQ-117

Copyright © GEMTEK TECHNOLOGY Co., Ltd. 2015. All rights reserved.

No part of this document may be reproduced or transmitted in any form or by any means without prior written consent of GEMTEK TECHNOLOGY Co., Ltd.

Trademarks and Permissions



and other Gemtek trademarks are trademarks of GEMTEK TECHNOLOGY Co., Ltd.

All other trademarks and trade names mentioned in this document are the property of their respective holders.

Notice

The purchased products, services and features are stipulated by the contract made between Gemtek and the customer. All or part of the products, services and features described in this document may not be within the purchase scope or the usage scope. Unless otherwise specified in the contract, all statements, information, and recommendations in this document are provided "AS IS" without warranties, guarantees or representations of any kind, either express or implied.

The information in this document is subject to change without notice. Every effort has been made in the preparation of this document to ensure accuracy of the contents, but all statements, information, and recommendations in this document do not constitute a warranty of any kind, express or implied.

Gemtek Confidentiality

Contents

Contents.....i

1 Easy Setup 1

 1.1 Hardware

 1.2 Login to Web GUI..... 1

 1.3 Connect and Disconnect LTE Connection 2

 1.4 Change APN Configuration..... 3

2 Upgrade Firmware..... 4

1 Easy Setup

1.1 Hardware

Please follow the steps below to configure your device through the web interface:

Qualcomm module-based evaluation kit requires a Windows® PC, running Windows XP or Window7 with an USB 2.0 port. It can also be used with a computer running Linux.

1.2 Login to Web GUI

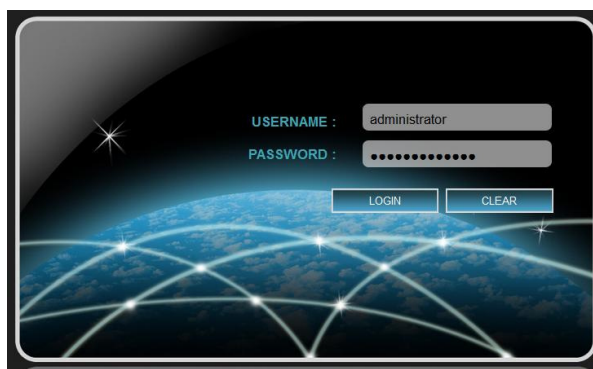
Please mount the module on a daughter board, and follow the steps below to configure your device through the web interface:

- Step1:** Connect PC use RJ45 to PoE which is label **IN**.
- Step2:** Open the Web browser (Ex: Internet Explorer, Firefox or Chrome).
- Step3:** Enter the default IP address of CPE into web browser, which is : <http://192.168.15.1>
- Step4:** Enter USERNAME/PASSWORD to access the web management interface (web GUI).

Below is **default** Username and password for **super user and end user**.

Login As	Username	Password
Super User	administrator	Administrator
End User	admin	Admin

- Step5:** Press **Login** after to enter username/password.

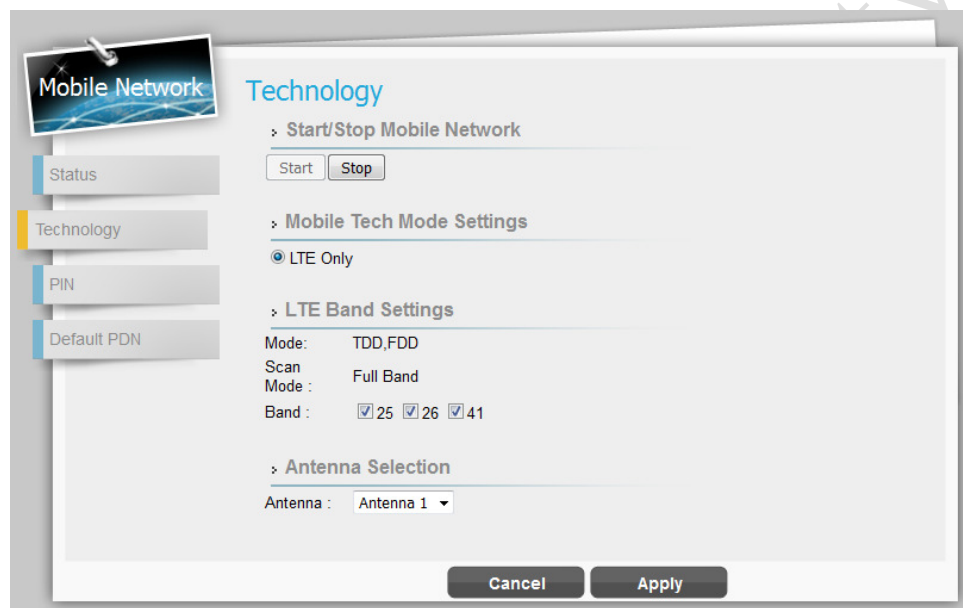


Web management interface

1.3 Connect and Disconnect LTE Connection

Please follow the steps below to Connect or Disconnect LTE connection:

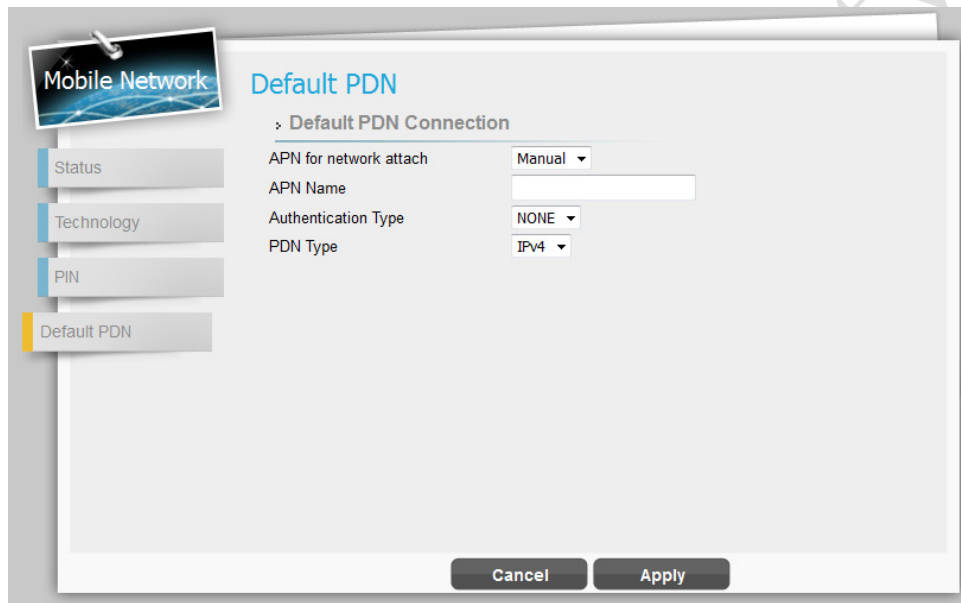
- Step1:** Login to Web GUI
- Step2:** Go to **Mobile Network > Technology**
- Step3:** Click **“Start”** Button to Attach LTE Network
Click **“Stop”** Button to Detach from LTE Network



1.4 Change APN Configuration

Please follow the steps below to change APN configuration:

- Step1:** Login to Web GUI
- Step2:** Go to **Mobile Network > Default PDN**
- Step3:** To change APN configuration, select APN for network attach to “Manual”,
- Step4:** To change APN Name, please fill in APN Name text box

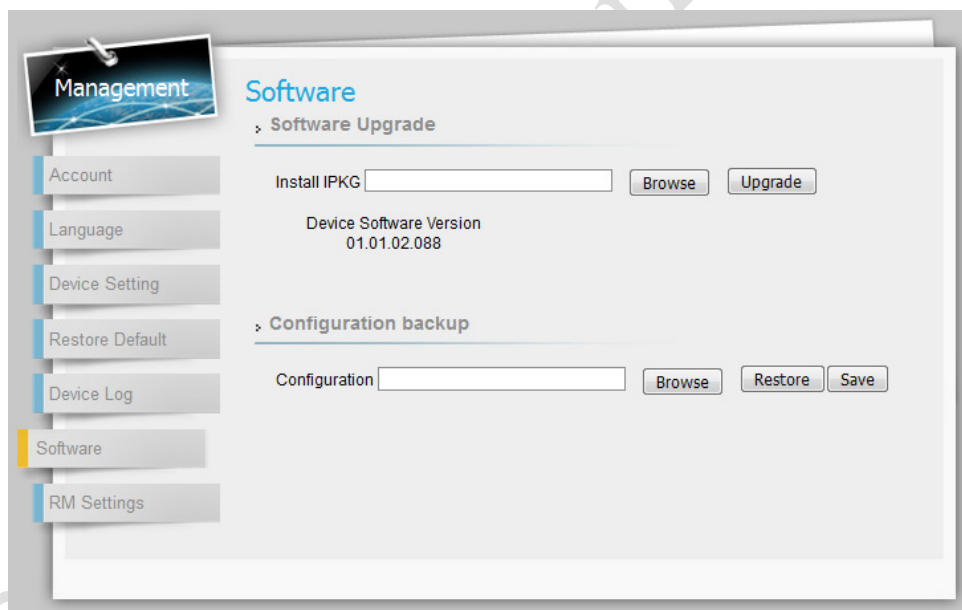


The screenshot shows the 'Default PDN' configuration page. On the left, there is a sidebar with a 'Mobile Network' icon and four menu items: 'Status', 'Technology', 'PIN', and 'Default PDN'. The main content area is titled 'Default PDN' and contains a section for 'Default PDN Connection'. This section has four fields: 'APN for network attach' (a dropdown menu set to 'Manual'), 'APN Name' (a text input box), 'Authentication Type' (a dropdown menu set to 'NONE'), and 'PDN Type' (a dropdown menu set to 'IPv4'). At the bottom of the page, there are two buttons: 'Cancel' and 'Apply'.

2 Upgrade Firmware

Upgrade Firmware is use to upgrade latest Firmware. Please follow below step for upgrade Firmware:

- Step1:** Login to web GUI
- Step2:** Go to **Management > Software**
- Step3:** Click “**Browse**” button to select the ipkg file to upload, and then click “**Upgrade**” to install the selected file. The Upgrading window will be shown as below and then the reboot process will be started to let the change taken effect.



Management>Software



After pressing the “**Upgrade**” button, it will automatically reboot the CPE and upgrade the firmware with the specified file. You will be prompted to re-login to the CPE after the upgrade is complete.

FCC Caution: Any changes or modifications not expressly approved by the party responsible for compliance could void the user's authority to operate this equipment.

IMPORTANT NOTE:

FCC Radiation Exposure Statement:

This equipment complies with FCC radiation exposure limits set forth for an uncontrolled environment. This equipment should be installed and operated with minimum distance 20cm between the radiator & your body.

This transmitter must not be co-located or operating in conjunction with any other antenna or transmitter.

Gemtek Confidentiality

This device is intended only for OEM integrators under the following conditions:

- 1) The antenna must be installed such that 20 cm is maintained between the antenna and users, and
- 2) The transmitter module may not be co-located with any other transmitter or antenna,

As long as 2 conditions above are met, further transmitter test will not be required. However, the OEM integrator is still responsible for testing their end-product for any additional compliance requirements required with this module installed

IMPORTANT NOTE: In the event that these conditions can not be met (for example certain laptop configurations or co-location with another transmitter), then the FCC authorization is no longer considered valid and the FCC ID can not be used on the final product. In these circumstances, the OEM integrator will be responsible for re-evaluating the end product (including the transmitter) and obtaining a separate FCC authorization.

End Product Labeling

This transmitter module is authorized only for use in device where the antenna may be installed such that 20 cm may be maintained between the antenna and users. The final end product must be labeled in a visible area with the following: "Contains FCC ID: MXF-WLTMQ117"

Manual Information To the End User

The OEM integrator has to be aware not to provide information to the end user regarding how to install or remove this RF module in the user's manual of the end product which integrates this module. The end user manual shall include all required regulatory information/warning as show in this manual.