

3.5.4. LaCie Network Assistant Auto Mount

LaCie Network Assistant provides a simple feature to mount Wireless Space shares and USB volumes (if applicable) each time you log onto the computer. From the system tray (Windows) or menu bar (Mac), go to [LaCie Network Assistant > Configuration Window... > Volumes](#). Enable the check box for [Auto Mount](#) next to the preferred shares.

To disable this feature, deselect the check box.

3.5.5. Accessing Shares Using File Browser

The Dashboard features an interactive file browser that allows you to manage and transfer files. Follow these steps to open the file browser:

1. Log in to the Dashboard (see section 3.6.1. *Dashboard: Accessing* for details).
2. Click the **File Browser** button (Fig. 49) on the upper right of the Dashboard.
3. The File Browser (Fig. 50) will launch.
4. To return to the Dashboard, click on the word **Dashboard** (Fig. 50) on the upper right of the File Browser window.

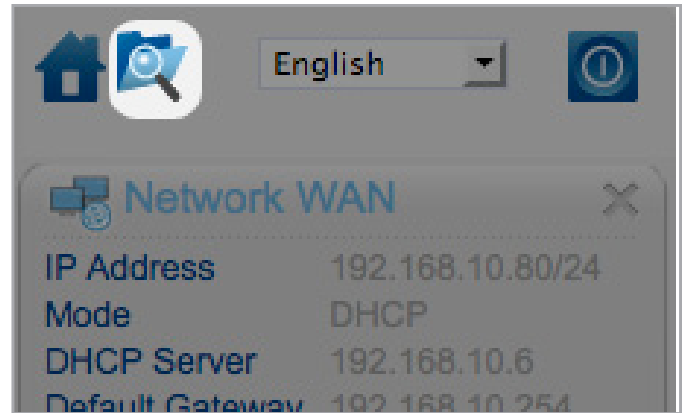


Fig. 49

3.5.5.1. About the File Browser

The File Browser is composed of five parts (Fig. 51):

1. **Tool bar** allows you to perform a range of functions, such as changing the way files are displayed and uploading files to the Wireless Space from your computer.
2. **Share selection** lets you choose the share you wish to access from the drop-down menu.
3. **Share folders** shows the folder structure on the selected share.
4. **File info** displays information on a selected file, such as name, file type, dimensions (photos), or duration (videos).
5. **Folder contents** displays the files contained in a selected folder. To view the files as thumbnails, click **Thumbs** in the Tool bar.

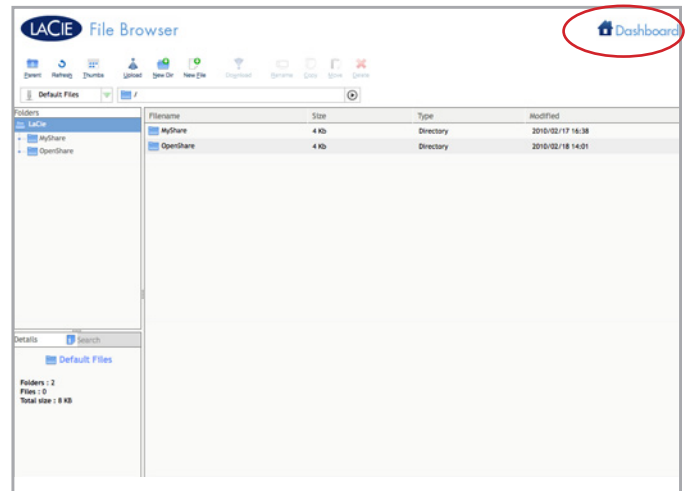


Fig. 50

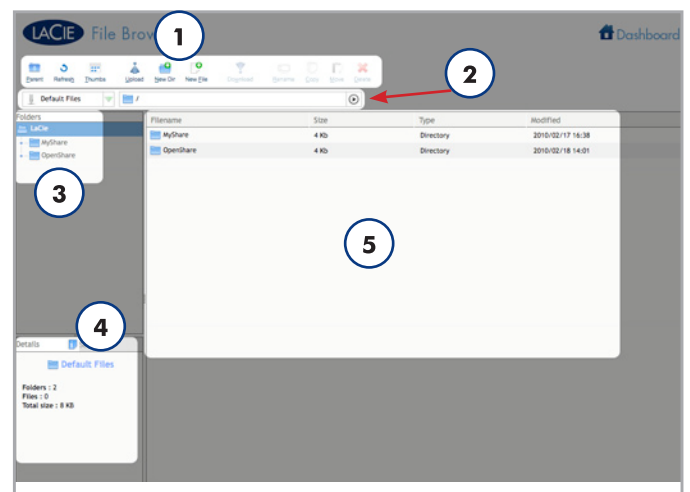


Fig. 51

3.5.6. Accessing Shares via FTP

The FTP protocol is used to transfer files from one computer to another through a local network or over the internet. This protocol allows you to exchange files with your friends or relatives securely, as only people who know the password will have access.

MANUAL NOTE: The FTP service is enabled by default. To change the setting, see [3.6.5. Dashboard: General Settings](#).

To connect to the Wireless Space remotely via FTP, enter the address information in your FTP software ([Fig. 52](#)) or in the URL bar of a web browser ([Fig. 53](#)):

[ftp://\[IP address\]](#)

TECHNICAL NOTE: See [3.4. LaCie Network Assistant](#) for instructions on finding your Wireless Space's IP address.

Example: [ftp://192.168.10.149](#)

You may have to enter the login and password created during setup.

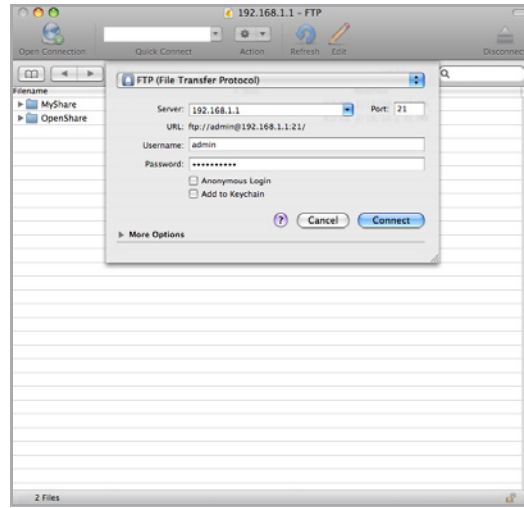


Fig. 52

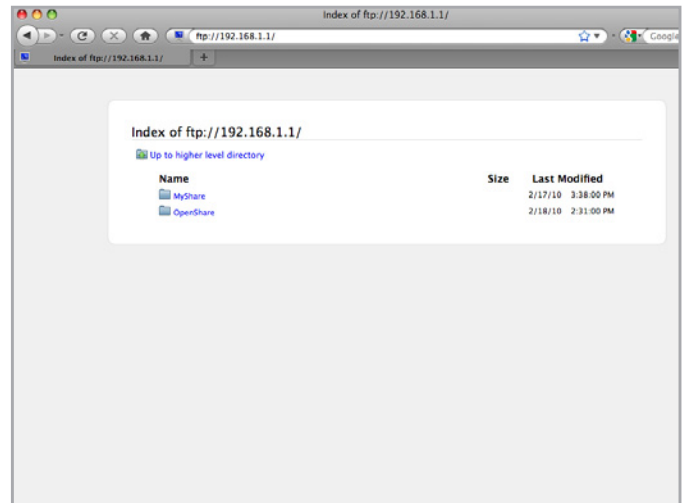


Fig. 53

3.5.7. Multimedia Server

You may configure your Wireless Space to act as a UPnP multimedia server.

Follow these steps:

1. If it has been disabled, turn on [Media Servers](#) in the Wireless Space Dashboard (see [3.6.5. Dashboard: General Settings](#)) ([Fig. 54](#)).
2. Now you may play files from your Wireless Space. UPnP/DLNA-certified players on your network (such as an Xbox 360™, Play Station® 3, a DLNA mobile phone, etc.) can play back media files located on [OpenShare](#) and USB drives connected to the Wireless Space. See your device's user manual for information on how to view media files from a UPnP/DLNA server and supported file types.

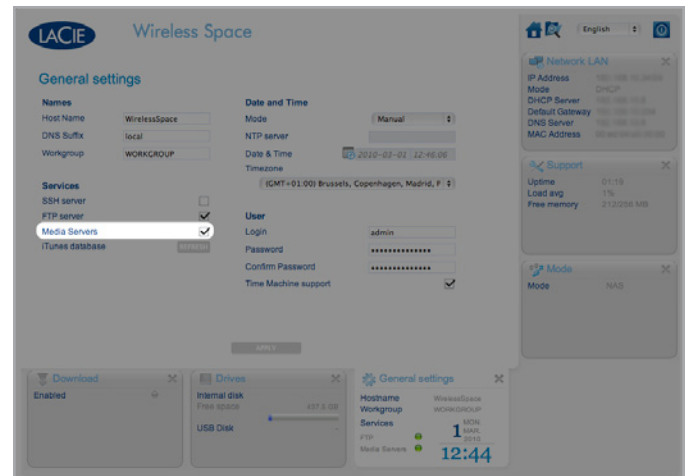


Fig. 54

3.5.8. iTunes Music Server

The Wireless Space can act as an iTunes Music server. Users with iTunes may stream audio files located on [OpenShare](#) and USB drives connected to the Wireless Space. Once configured, a playlist bearing the machine name of your Wireless Space (by default, [WirelessSpace](#)) will appear in the [Shared](#) category within iTunes. Copy audio files to [OpenShare](#) or plug a USB drive with music files into one of the Wireless Space USB expansion ports ([1.4. Views of the Drive](#)). The songs will be listed in the Wireless Space playlist. Follow these steps:

1. Make sure the Wireless Space is properly connected to your home network via Ethernet or Wi-Fi.
2. In the General Settings page of the Wireless Space Dashboard, [Media Servers](#) is enabled by default. It must remain enabled to use the Wireless Space as an iTunes server. (See [3.6.5. Dashboard: General Settings](#)) ([Fig. 54](#)).
3. The Wireless Space automatically scans for music once every 24 hours. To manually update the Wireless Space iTunes library, select [REFRESH](#) ([Fig. 55](#)). Please note that very large libraries of music will take time to add to the Wireless Space playlist.

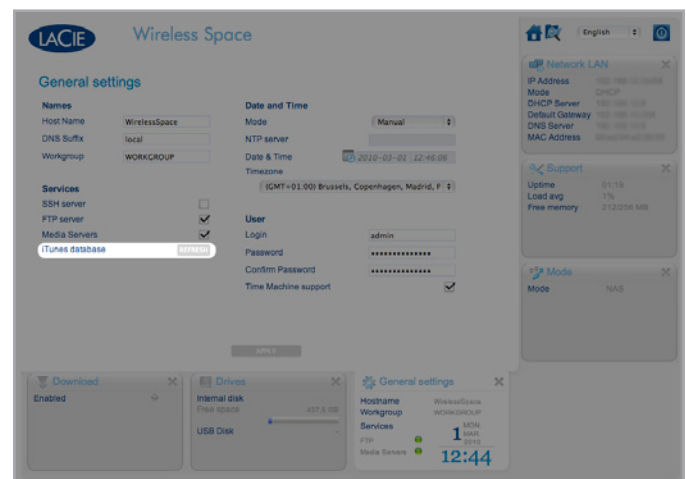


Fig. 55

continued on the next page >>

4. Access shared playlists in iTunes (*Fig. 56*).

TECHNICAL NOTE: The iTunes Server Service supports the following file types: .mp3, .wav, and .aac.

TECHNICAL NOTE: The server feature must also be enabled in the iTunes preferences: [Preferences > Sharing > Look for shared libraries](#).

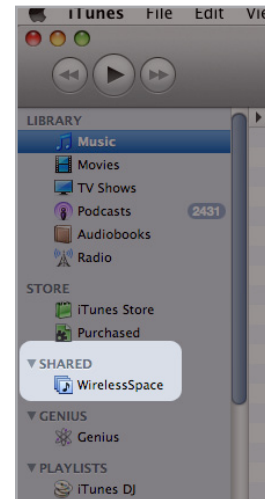


Fig. 56

3.6. Administering Your LaCie Wireless Space

The Dashboard is a browser-based tool for administering your Wireless Space. To update the settings or browse files, type the Wireless Space's IP address or machine name in your browser address bar. LaCie Network Assistant also offers an easy hyperlink to launch the Dashboard.

This section covers the fundamental Dashboard operations for all users. Further, the details that follow provide all the management features available to those who have chosen one of the two Basic configurations:

NAS+SWITCH - NAS Ethernet - Wired Only

NAS+SWITCH - NAS Wireless Client

For additional features that pertain to Beyond Basic configurations, see [4.5. Administering Your LaCie Wireless Space - Beyond Basic](#).

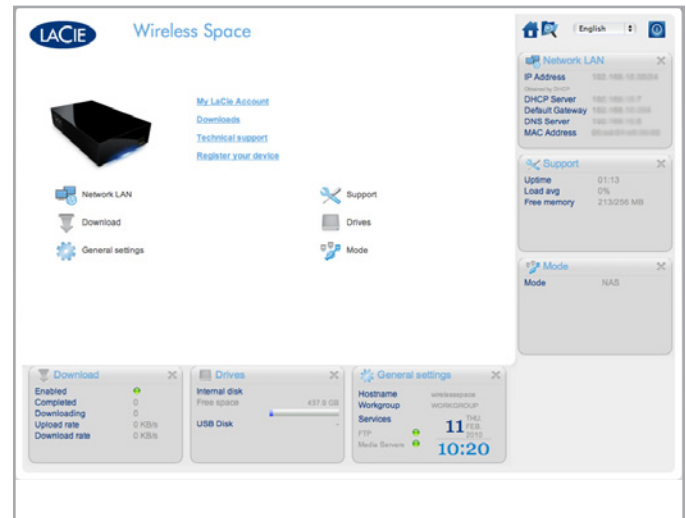


Fig. 57

[3.6.1. Dashboard: Accessing](#)

[3.6.2. Dashboard: Welcome Page](#)

[3.6.3. Dashboard: Navigation](#)

[3.6.4. Dashboard: Shut Down or Restart the Wireless Space](#)

[3.6.5. Dashboard: General Settings](#)

[3.6.6. Dashboard: Network LAN](#)

[3.6.7. Dashboard: Drives](#)

[3.6.8. Dashboard: Support](#)

[3.6.9. Dashboard: Download](#)

[3.6.10. Dashboard: Mode](#)

[3.6.11. Dashboard: Wireless Client](#)

IMPORTANT INFO: In many instances, the Dashboard will close whenever a setting is changed. Please wait a few moments before refreshing the Dashboard page.

3.6.1. Dashboard: Accessing

There are two ways to access the Dashboard, using the hyperlink in LaCie Network Assistant (3.4.1. *Connect to the LaCie Wireless Space Dashboard using LaCie Network Assistant*) and entering information manually in a browser (3.4.2. *Connect to the LaCie Wireless Space Dashboard directly from the browser*).

3.6.1.1. Use LaCie Network Assistant

1. From the system tray (Windows users) or menu bar (Mac users), select *LaCie Network Assistant > Web Access...*

The LaCie Wireless Space login page will launch in a new browser window or tab (Fig. 58). If your browser is not open, LaCie Network Assistant will open it for you.

2. Enter the **Name** and **Password** created during Setup.

IMPORTANT NOTE: The login and password are case-sensitive.

3.6.1.2. Use a Browser

1. Open a preferred Internet browser (see 1.2. *Minimum Computer and Network Requirements* for supported browsers).
2. Type the Wireless Space's IP address or machine name in the URL (web address) field (Fig. 59).
 - ◆ The IP address may be found in LaCie Network Assistant (Fig. 60).
 - ◆ You may have named the device during the Setup. If not, the default is *WirelessSpace*.
 - ◆ Examples: <http://192.168.1.1> and <http://WirelessSpace>
3. Enter the **Name** and **Password** created during setup.

IMPORTANT NOTE: The login and password are case-sensitive.

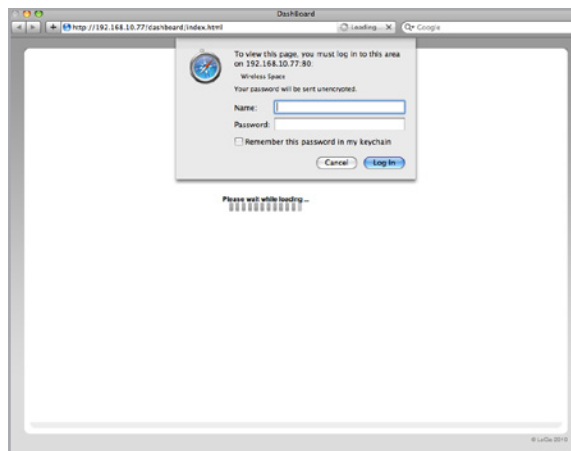


Fig. 58

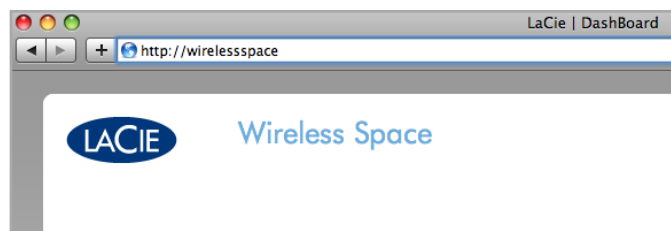


Fig. 59

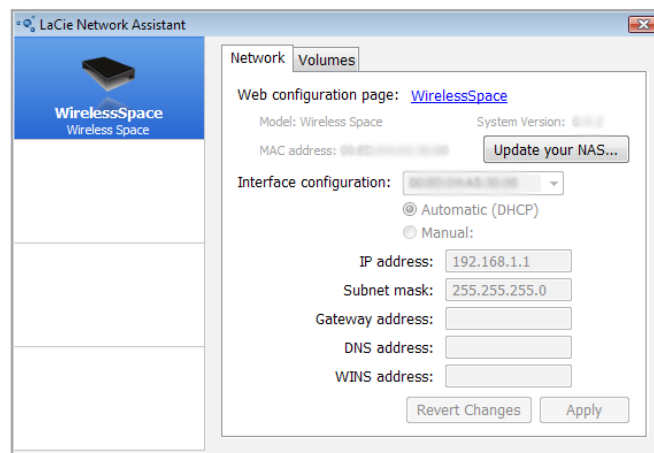


Fig. 60

3.6.2. Dashboard: Welcome Page

The welcome page contains links to helpful documents from the LaCie web site (Fig. 61, a) and a table listing the different pages that make up the Dashboard (Fig. 61, b). The center of the Dashboard provides all the information for a specific setting.

The welcome page in Fig. 61 displays the minimum “widgets” for the LaCie Wireless Space Dashboard, which is normal for the Ethernet NAS - Wired Only configuration.

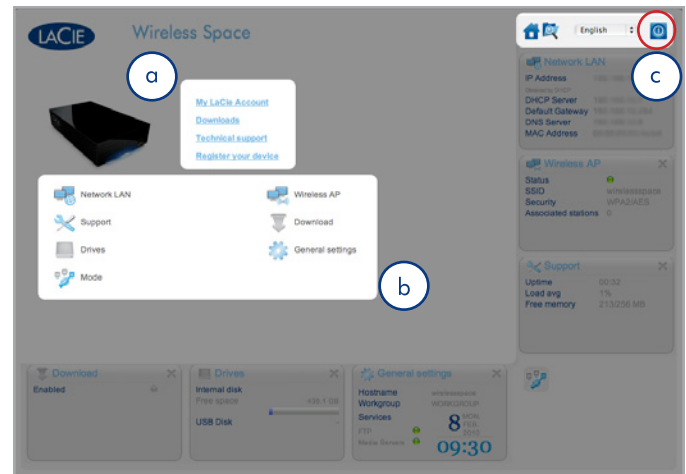


Fig. 61

3.6.3. Dashboard: Navigation

The Dashboard is made up of a central area surrounded by six expanded widgets. Widgets are small boxes that represent the operational pages for administering the Wireless Space. The widget boxes in the welcome page display key summaries for each setting. For further information or to adjust specific settings, navigate to the page itself.

- ◆ To **navigate to a page**, click the icon next to the widget title (Fig. 62, a). You may also use the mouse to click on the center of the widget and drag it into the main area.
- ◆ To **minimize** a widget, click the X next to its title (Fig. 62, b). Fig. 62, c shows a minimized widget.
- ◆ To **expand** a minimized widget, drag its icon over one of the six expanded widgets. The two widgets will exchange places. To see all the information in a minimized widget, drag it to the center of the Dashboard.

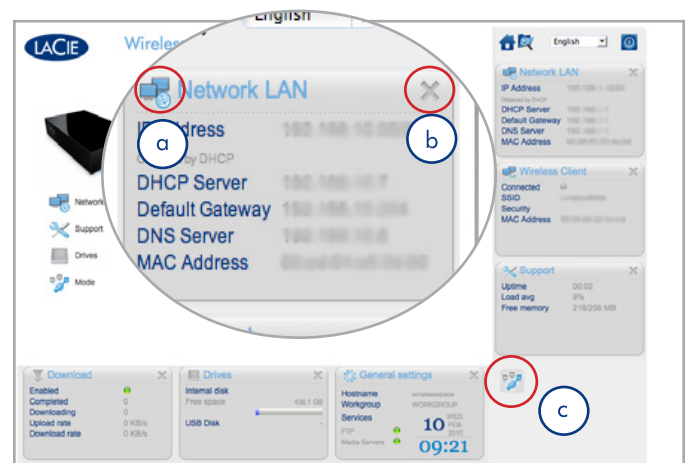


Fig. 62

3.6.4. Dashboard: Shut Down or Restart the Wireless Space

It is best to turn off or restart your Wireless Space in the Dashboard. To shut down or restart the LaCie Wireless Space, click the **Power Button** in the upper right corner of any Dashboard page (Fig. 61, c and Fig. 63).

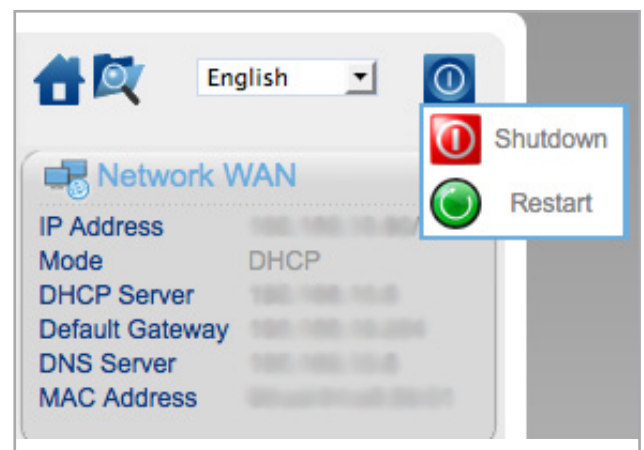


Fig. 63

3.6.5. Dashboard: General Settings

This page allows you to choose or modify some of your Wireless Space's basic settings. For a change to take effect, select **APPLY** at the bottom of the main area of the Dashboard.

3.6.5.1. Names, Date & Time, iTunes & Media Server, and Login & Password

Names

Changes can be made to the **Host Name** (Wireless Space name), **DNS Suffix**, and **Workgroup**. Workgroups are used by Windows servers to group network devices together.

- ◆ A host name must contain 4 to 15 alphanumeric characters. Do not use symbols or spaces.

Date and Time

Date and Time may be entered manually or using a Network Time Protocol (NTP) server. The NTP server may be part of your network or a web address. For example, [Fig. 65](#) uses the public site pool.ntp.org.

Services

Enable or disable **SSH**, **FTP**, and **Media Servers** (UPnP/DLNA/iTunes). Select **REFRESH** to have Wireless Space search **OpenShare** for iTunes library files.

User

Change the **Login** and **Password** for the Wireless Space.

- ◆ A login must contain 2 to 16 alphanumeric characters (case sensitive) and begin with a letter. Do not use a symbol for a login.
- ◆ A password must have 8 to 16 alphanumeric characters (case sensitive).
- ◆ Please note that the browser page will reload and ask for the new login and password.

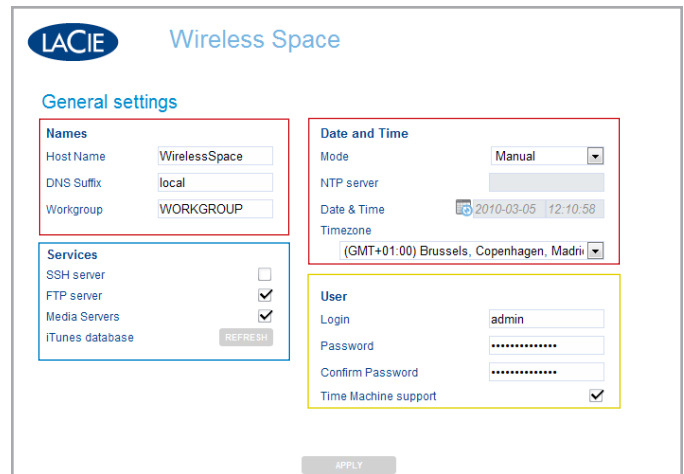


Fig. 64

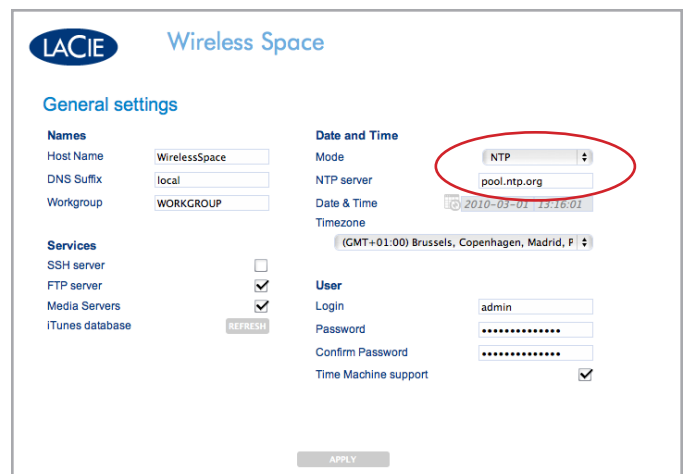


Fig. 65

continued on the next page >>

3.6.5.2. Time Machine™

Time Machine support is turned on by default. With Time Machine support selected, an icon marked “Wireless Space (Time Machine)” will appear in the Shared section of a Finder Window below the standard Wireless Space icon. The Wireless Space (Time Machine) icon is a virtual representation for a Time Machine compatible disk. It is not a volume for use on the desktop.

MyShare, OpenShare, and USB volumes connected to the Wireless Space may be used on the desktop. Provided that Time Machine support is turned on in the Dashboard, you may choose MyShare or OpenShare for Time Machine backups.

TECHNICAL NOTE: Time Machine is Mac-compatible only.

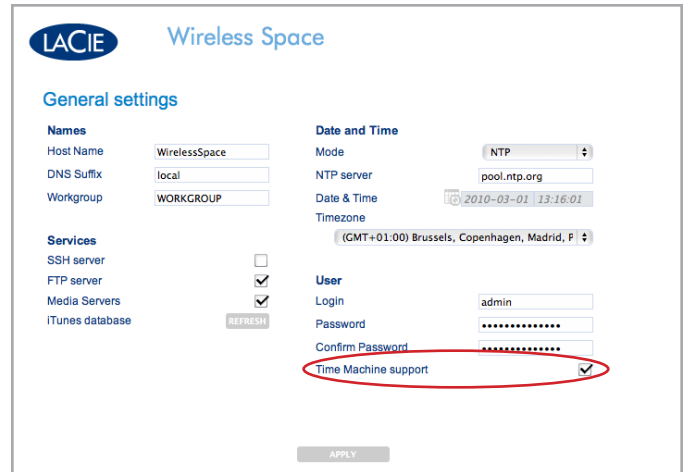


Fig. 66

3.6.6. Dashboard: Network LAN

This page allows you to modify your Wireless Space’s network settings. For a change to take effect, select **APPLY** at the bottom of the main area of the Dashboard.

IMPORTANT INFO: Use caution when adjusting the Wireless Space network settings. Please consult the user manual for the server, router, or Internet provider to determine how best to manage devices on the network.

3.6.6.1. IP Address and Remote Access

WAN Interface

Most home and business networks have a DHCP server that manages the IP addresses for all devices. Therefore, the default setting for all Switch+NAS modes (2. *What is the best configuration for my network?*) is DHCP (Fig. 67). If your network does not include a DHCP server or you intend to create a static IP address for the Wireless Space, please make certain to:

- ◆ Establish the static IP address with your server, router, or Internet provider.
- ◆ Fill in all the necessary fields (Fig. 68).

Dynamic DNS

You can manage your Wireless Space while away from the network. To access the Dashboard from the office, a friend’s house, or any location with Internet service, enable **Dynamic DNS**.

Dynamic DNS provides access to your Wireless Space via a URL name that is easily entered into a web address bar. To begin, you must create a Dynamic DNS account with a third-party provider. Please note that there are many companies that offer free remote access service using Dynamic DNS (see Fig. 69 displaying the pull-down menu of third-party services from the Dashboard).

Once you have selected a company and created an account on its web site, enter the pertinent information in the fields:

- ◆ Full **Hostname**, **Account**, and **Password**

For more information, view LaCie’s screencast tutorial on setting up Dynamic DNS at: <http://www.lacie.com/us/support/faq/faq.htm?faqid=10706>

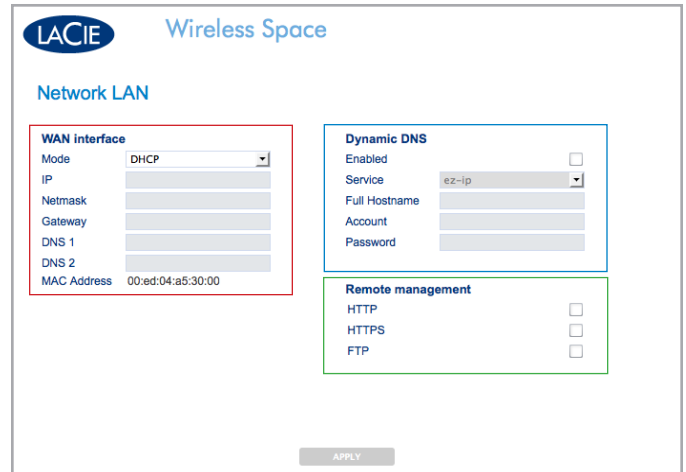


Fig. 67

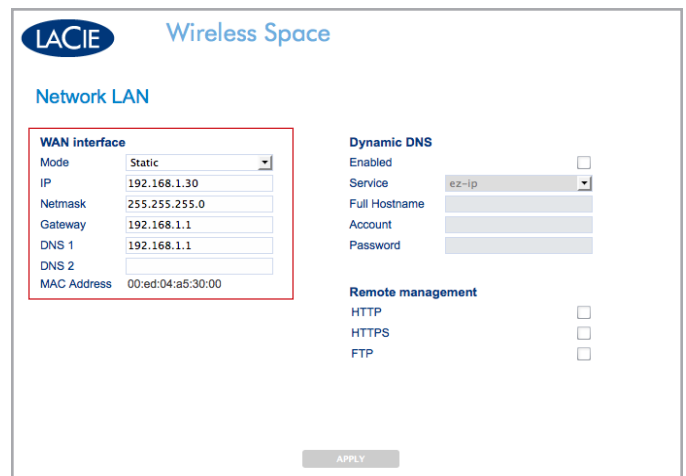


Fig. 68

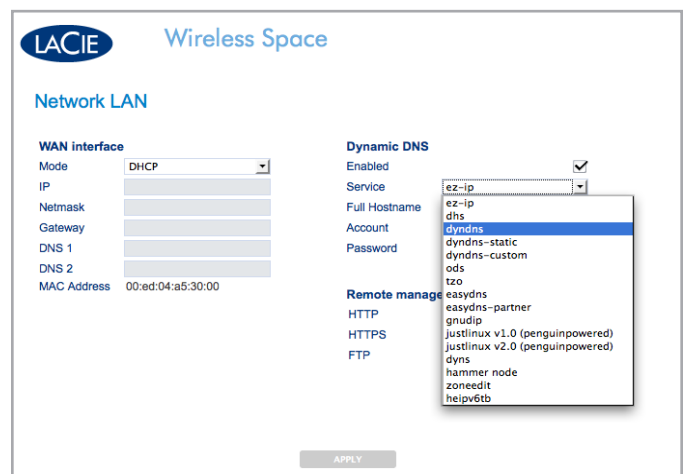


Fig. 69

continued on the next page >>

Remote management

In addition to Dynamic DNS, remote access to the Dashboard may be configured using HTTP and HTTPS. It is also possible to access files stored on the Wireless Space using an FTP address. Enable one or all options and look to your DHCP server to provide the addressing information required to access the Wireless Space from a location outside the network. Your router, switch, or Internet provider must support UPnP IGD and/or NAT-PMP.

Please make certain to have a secure login and password since anyone can try to log onto an IP address.

3.6.7. Dashboard: Drives

Manual and automatic backups of USB hard drives connected to the Wireless Space are easy to manage using this page. For a change to take effect, select **APPLY** at the bottom of the main area of the Dashboard. External USB 2.0 devices may be attached to any of the three USB 2.0 ports on the front (1.4.1. *Front View*) or rear (1.4.2. *Rear View*) of the Wireless Space.

Fig. 70 shows the Drives page with only Wireless Space internal disk.

Manual Backup

Fig. 71 has two USB storage drives attached to the Wireless Space. In this case, disk 1 will backup its data to the Wireless Space. To begin a manual backup, select the “copy from” icon (Fig. 71, a) on an external hard drive and the “copy to” icon on the Wireless Space (Fig. 71, b). Once the source and target drives have been chosen, click **START** (Fig. 70). To stop the data transfer while it is in progress, click **CANCEL** (Fig. 71).

Please note that it is not possible to use the Drives page for copying data from the Wireless Space hard drive to an attached USB drive.

Auto import

Fig. 72 has two USB hard drives attached to the Wireless Space. Note that **Auto import** (Fig. 72, a) has been checked. By checking this box, the Wireless Space will automatically backup data to its internal storage once a USB hard drive is attached to one of the three USB host ports. The backups are not incremental, however, which means that each **Auto import** will create a new folder on the Wireless Space disk drive.

Unmount

It is very important to select **UNMOUNT** (Fig. 72, b) when disconnecting an external USB hard disk from one of the three USB host ports on the Wireless Space. You may unplug the USB device once it has been removed from the list on the Drives page.

IMPORTANT NOTE: Mac disk format HFS+ Journaled is not supported. The Wireless Space will see a volume partitioned in HFS+ Journaled in the Dashboard Drives page but cannot copy files to it or mount it on a computer.

IMPORTANT NOTE: The Wireless supports external USB storage volumes up to 2 TB.

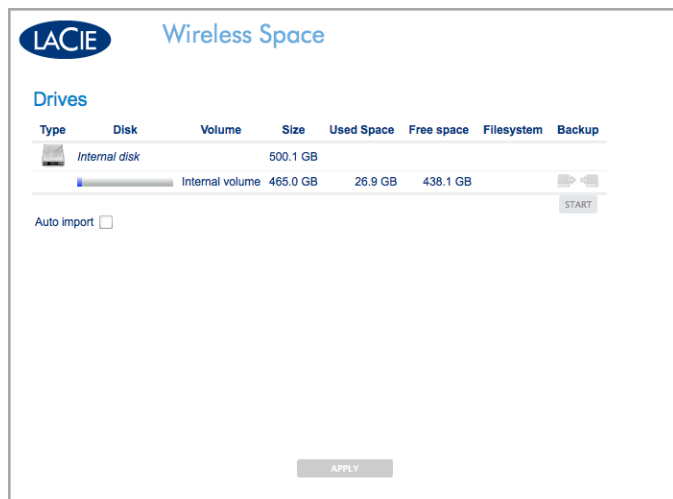


Fig. 70

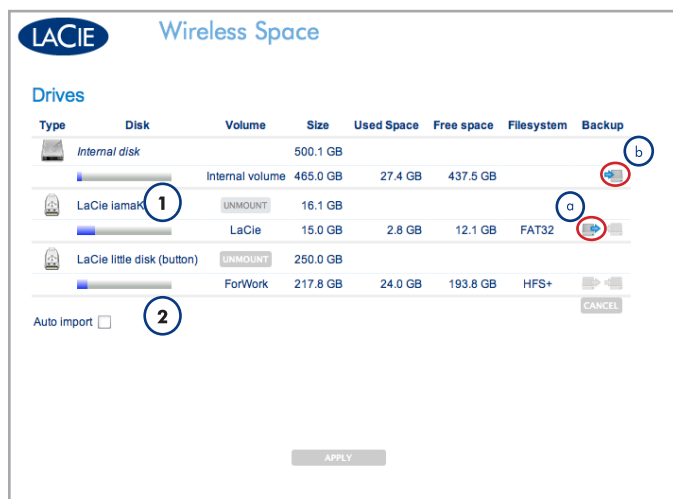


Fig. 71

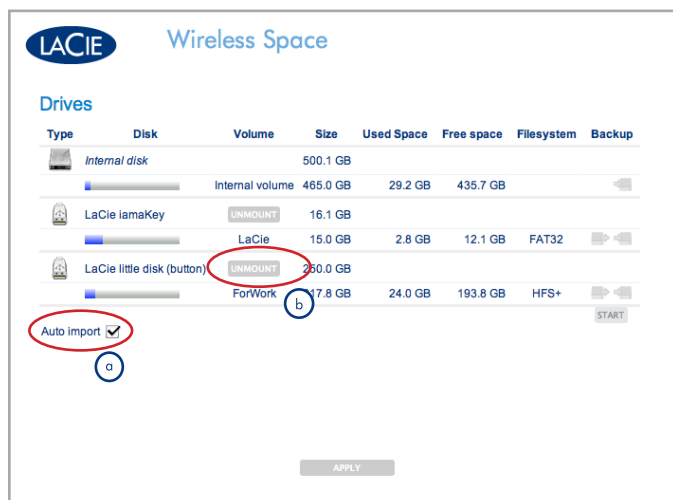


Fig. 72

3.6.8. Dashboard: Support

The Wireless Space system information and firmware version can be found on this page. Additional tabs make it easy to set the Wireless Space back to its factory default and turn the front light on or off. For a change to take effect, select **APPLY** at the bottom of the main area of the Dashboard.

3.6.8.1. Firmware, Resetting the device, and Light

System Tab - Fig. 73

Product

- ◆ The name of the product
- ◆ A convenient link to support documentation

System

- ◆ The amount of time the system is on
- ◆ Load and memory usage

System logs

- ◆ System logs are helpful when troubleshooting your device.
- ◆ Selecting **DOWNLOAD** will place the log file (log.tar) in the operating system's Download folder.

Automatic upgrade

- ◆ The Wireless Space will search for firmware updates.
- ◆ This feature is turned on by default. To turn it off, deselect the checked box.

Firmware

- ◆ View the version and date of the software installed on the Wireless Space.
- ◆ In order to maintain the performance of its products, LaCie releases periodic firmware updates. If an update file is available for the Wireless Space:

1. Download it from LaCie's web site, www.lacie.com.
2. Once the file (.CLUFF) has been downloaded to your system, select **UPLOAD>Choose File** (Fig. 74) and browse for it on your computer (Fig. 75).

continued on the next page >>

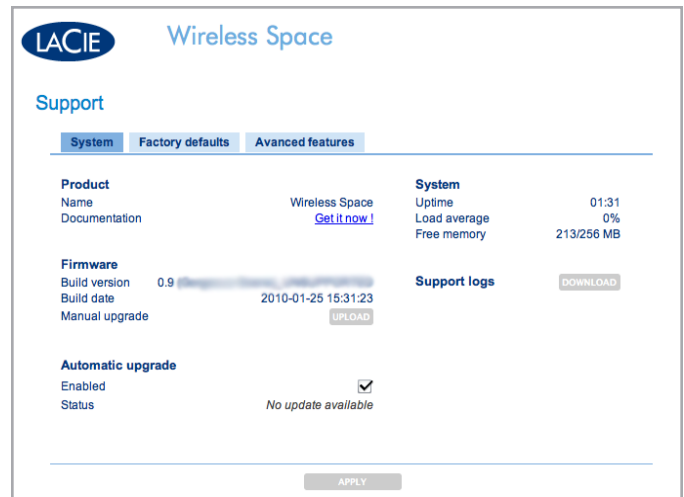


Fig. 73

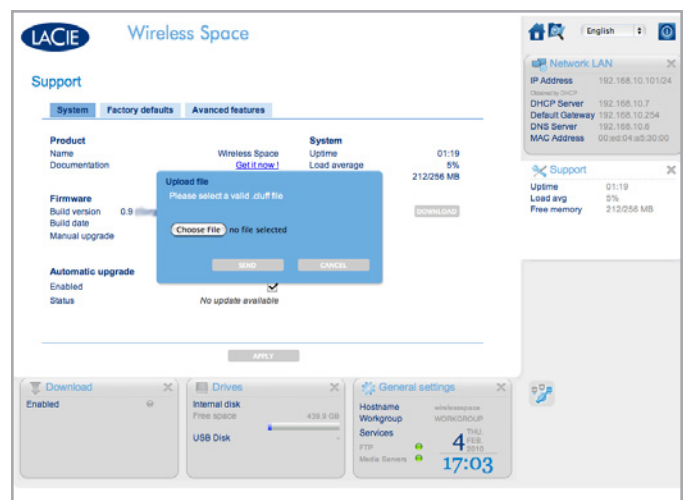


Fig. 74

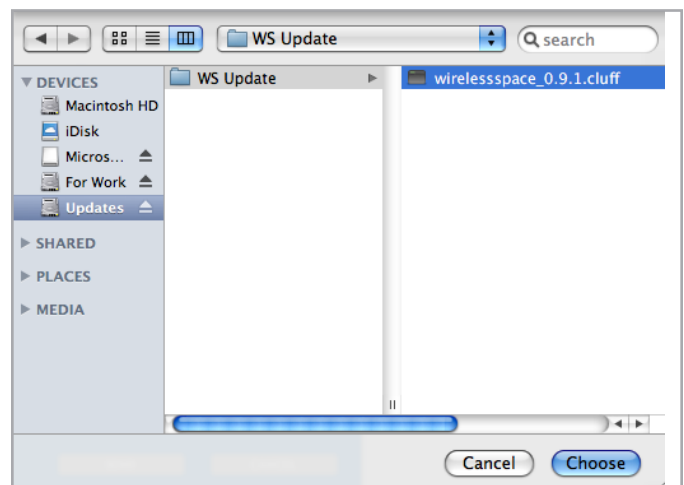


Fig. 75

3. Choose **SEND** to update your Wireless Space (Fig. 76). Please be patient while the device updates and automatically restarts. Upon reboot, the light flashes red/blue/green as notification that the update is in process. Once finished, the light will turn back to blue (Wi-Fi active) or green (Wi-Fi inactive) based upon the mode you are using.

TECHNICAL INFO: Updating firmware on the Wireless Space is an important step in maintaining optimal performance. Further it is non-destructive, which means that data stored on the device is not lost.

IMPORTANT INFO: DO NOT unplug the power cable or attempt to turn off the Wireless Space while it is updating the firmware. You will disrupt the integrity of the system.

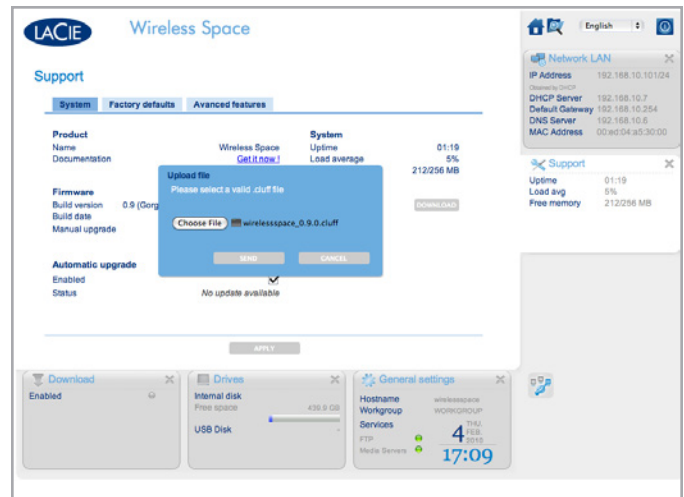


Fig. 76

Configuration Tab - Reset

For troubleshooting purposes or to run the Setup Wizard again, it may be necessary to reset the Wireless Space. Before applying any of the reset options (Fig. 77, a, b, & c), you may save the current configuration and its settings (Fig. 77, d). If the configuration is particularly complex, backing up the settings (Wi-Fi access point security settings, router settings, etc.) will save time when restoring your Wireless Space. For example, if you wish to reformat the Wireless Space internal hard drive but intend to maintain the current configuration. To backup and restore a configuration:

- ◆ Select **SAVE** (Fig. 77, d) to backup the settings to your computer or a separate drive *before* resetting the device. The file name will resemble something like: "db_2010-02-22_11-37-31.dat". Note the location of the file on your computer.
- ◆ Once the reset is finished, you can skip the Setup Wizard and load the backed up configuration.
 1. Choose the **Support** page and **Configuration** tab in the Dashboard.
 2. Click **RESTORE** (Fig. 77, d) and browse for the configuration file on your computer. Select **SEND** to load the configuration.
- ◆ Please note that the Wireless Space will be restored to its default settings after a reset, which means an IP address of 192.168.1.1 and the configuration NAS Router (see 1.9. *Default Settings*). Make certain to disconnect the Wireless Space from a router, switch, or Internet provider before attempting to access the Dashboard. The connection should remain between the computer and the Wireless Space when attempting to restore a configuration.



Fig. 77

continued on the next page >>

There are three options for resetting the device (Fig. 78):

- a. **Reset factory configuration.** The firmware (if it has been updated since the initial setup) and data remain intact. Once this option is checked, select **APPLY**. The Wireless Space will reboot to the default configuration, **NAS Router - Wired Only**.
- b. **Restore original software version (data preserved).** The Wireless Space firmware and configuration (**NAS Router - Wired Only**) revert to their defaults. Once this option is checked, select **APPLY**.
- c. **Restore device to factory state (data erased) (NAS Router - Wired Only).** The entire device reverts to its out-of-box settings as the drive is formatted and the firmware update(s) erased. **ALL DATA WILL BE LOST**. Once this option is checked, select **APPLY**.

Advanced features - Light and HTTPS certificate

The default setting for the front light is on (Fig. 79). To turn it off, deselect the light check box and choose **APPLY**. The light will turn off during standard operations. However, the light will continue to provide visual signals when it encounters an error, experiences failure, reboots, or resets. See 1.8. *Light Behavior* for more information on the light.

To register HTTPS certificates, click **UPLOAD** to browse your computer for the file.

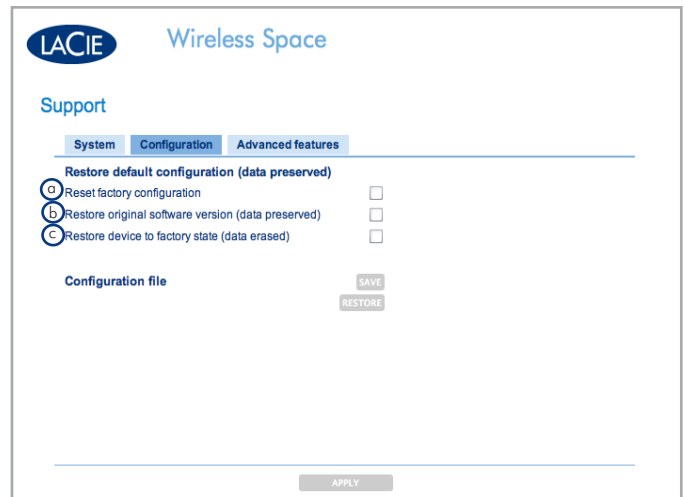


Fig. 78

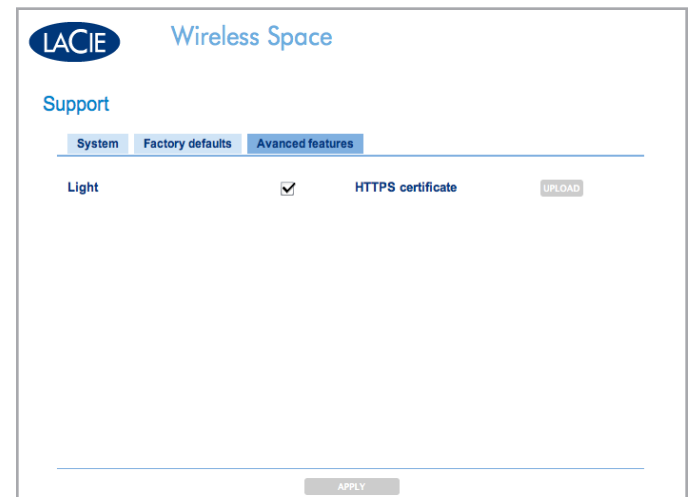


Fig. 79

3.6.9. Dashboard: Download

Save .torrent files directly onto [MyShare](#) with the Download page. Browse your computer for .torrent files to upload or save them from another location (network server, network device, Internet, etc). For a change to take effect, select [APPLY](#) at the bottom of the main area of the Dashboard.

IMPORTANT INFO: Due to their small size and efficient use of bandwidth, torrents are very popular for downloading large files. Unfortunately, .torrent has become the format of choice for many illegal or pirated files. While we hope that all customers enjoy LaCie products such as the Wireless Space, the company does not encourage anyone to engage in illegal acts. LaCie is not responsible for any acts of piracy or theft should someone choose to download, upload, read, and/or write illegal files on or from one of its products.

3.6.9.1. Upload .torrent files

The Download function is not enabled as the default. To turn it on:

1. Select the [Download](#) page
2. Choose the [Configuration](#) tab
3. Click the [Enabled](#) box
4. Select [APPLY](#)

Settings for .torrent downloads may be adjusted at any time ([Fig. 80](#)).

- ◆ The fields for [Upload limit](#) and [Download limit](#) are empty, which means the default does not place any restrictions on transfer rates. Enter a number and click [APPLY](#) to place ceilings on either function.
- ◆ You may also adjust the TCP Port and directory names. Note that you cannot change the target share for .torrent downloads.

To add a .torrent file to [MyShare](#):

1. Enable [Download](#) (follow the steps above)
2. Click [ADD TORRENT](#) ([Fig. 81](#))
3. Select [Choose File](#) ([Fig. 82](#))

[continued on the next page >>](#)

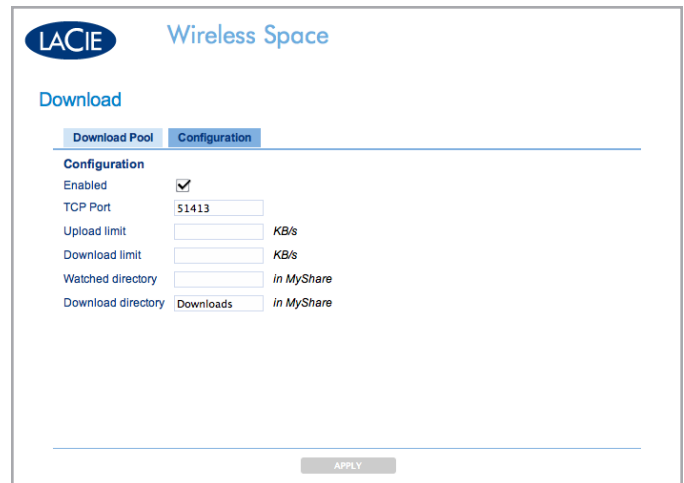


Fig. 80



Fig. 81



Fig. 82

4. Browse your computer for a .torrent file (Fig. 83)
5. Click SEND (Fig. 84) to add the .torrent to the Download Pool (Fig. 85)

MyShare Target Disk

If you are downloading files from a server or the Internet, you can choose MyShare as the target disk. The Download Pool will see any .torrent file on MyShare and add it to the list or watched folder. To act as the target disk, MyShare must be mounted on your computer (3.5.2. Accessing Shares Using LaCie Network Assistant).

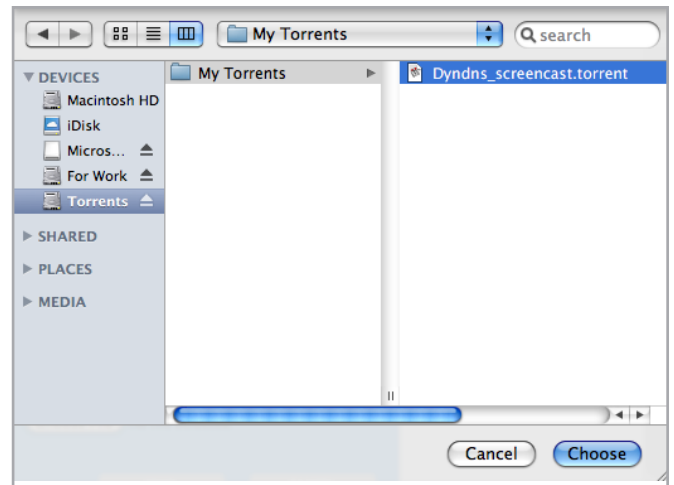


Fig. 83



Fig. 84



Fig. 85

3.6.10. Dashboard: Mode

To view the current Wireless Space configuration, select the Mode page. You may also change the configuration on this page to suit the needs of the network. Similar to the Network LAN page, changes in Mode can have significant effects upon the network. Please make certain that there are no conflicts among devices on the network before adjusting the configuration. For a change to take effect, select [APPLY](#) at the bottom of the main area of the Dashboard.

IMPORTANT NOTE: The Wireless Space IP address may change with a new configuration. Check LaCie Network Assistant if the previous IP address encounters difficulty launching the Dashboard. Quit and relaunch LaCie Network Assistant if the IP address remains the same but the Dashboard continues to be unavailable. Use the new IP address if applicable.

There are five possible configurations for the LaCie Wireless Space ([2. What is the best configuration for my network?](#)) but this section will cover the two that are considered Basic: NAS+Switch - No Wireless (“NAS Ethernet - Wired Only”) and Wireless Client (“NAS Wireless Client”). Both are easy to install and require very little management of the network router, switch, or Internet provider. For further information on Beyond Basic configurations, see [4.5. Administering Your LaCie Wireless Space - Beyond Basic](#).

Mode Window

The Mode page has three main sections ([Fig. 86](#)):

- a. The heart of the Wireless Space, [Base Mode](#) and [IP Configuration](#).
- b. The [Rear Panel Connections](#) provides insight on what ports to use when attaching the Wireless Space to network devices.
- c. [Network Layout](#), a graphical representation of the selected configuration.

[continued on the next page >>](#)



Fig. 86

3.6.10.1. Configuration Basics

Select a pulldown menu to change the [Base Mode](#), [Wireless Configuration](#), and [IP Configuration Mode](#).

- ◆ [Base Mode](#) has NAS+Switch and NAS+Router as choices ([Fig. 87](#)). For more information on NAS+Router, see [4.1. Before the Installation](#). Switching the [Base Mode](#) will have an effect on the other options due to the differences in function between a router and a switch.
- ◆ [Wireless Configuration Mode](#) is only available when the [Base Mode](#) is NAS+Switch ([Fig. 88](#)). The three choices are:
 1. [No Wireless \(Ethernet NAS\)](#). Ethernet ports expand the amount of Ethernet connections to the router or Internet provider.
 2. [Wireless Client \(Wireless NAS\)](#). Wireless network storage is now available to everyone on the network. In addition, the Wireless Space becomes a switch for computers and devices that are not close to the main router or Internet provider. This configuration does not offer a Wi-Fi access point for computers or wireless devices to join. The Wi-Fi connection is made between the Wi-Fi access point (i.e. Internet provider) and the Wireless Space.
 3. [Wireless AP \(NAS Extender\)](#). While this is part of the NAS+Switch Base Mode, the configuration is considered Beyond Basic due to Wi-Fi network management. See [4.1. Before the Installation](#) & [4.2. Configuration 3: Wireless Access Point \(Switch\)](#) for more information.

continued on the next page >>

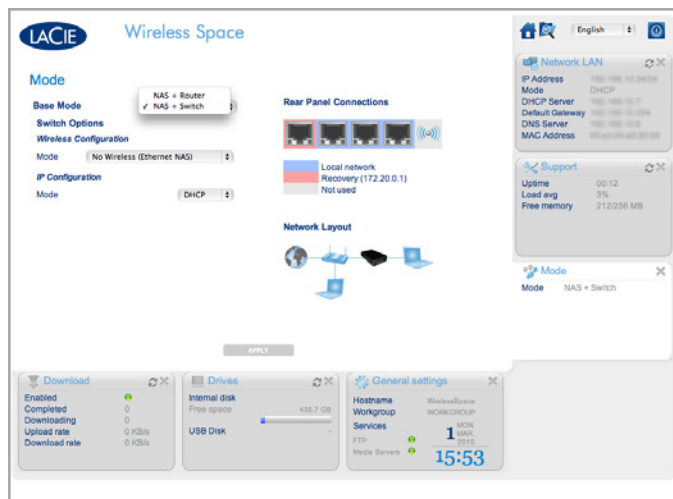


Fig. 87

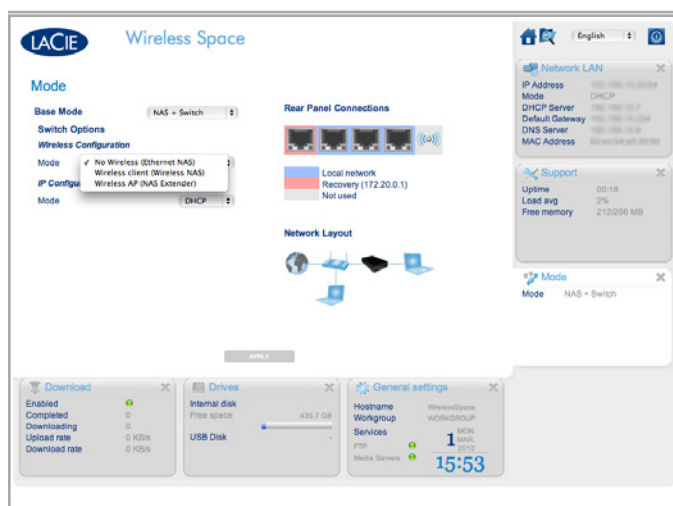


Fig. 88

- ◆ **IP Configuration Mode** (Fig. 89) lets you select between:
 1. **DHCP**. Since it offers ease of use and convenience, most homes and businesses have DHCP servers that assign IP addresses to all the devices on the network. DHCP is highly recommended since it requires very little management of the Internet provider.
 2. **IP**. If the network does not have a DHCP server or router to assign IP addresses, select **Static** in the **IP Configuration Mode** pulldown menu (Fig. 89). It is important to know all the pertinent information for the Static IP fields (Fig. 90).

Static IP

When using a Static IP, make certain to know how to fill in the fields seen in Fig. 90:

- ◆ **IP** - your router, switch, or Internet provider has a range of IP addresses that may be used to join the network. You must have a valid IP address for the Wireless Space to join a network.
- ◆ **Netmask** - another critical field for communicating with the network. If your router, switch, or Internet provider has a web-based administration tool similar to the Dashboard, you can copy and paste this field.
- ◆ **Gateway** - mandatory to access the WAN (web). If your router, switch, or Internet provider has a web-based administration tool similar to the Dashboard, you can copy and paste this field.
- ◆ **DNS** - check the user manual of your router, switch, or Internet provider to determine if DNS is required. If your router, switch, or Internet provider has a web-based administration tool similar to the Dashboard, you can copy and paste this field.

CAUTION: Leaving one field empty in the **IP Configuration** may prevent the Wireless Space from joining the network. Please see the user manual for your router, switch, or Internet provider for further information.

continued on the next page >>



Fig. 89

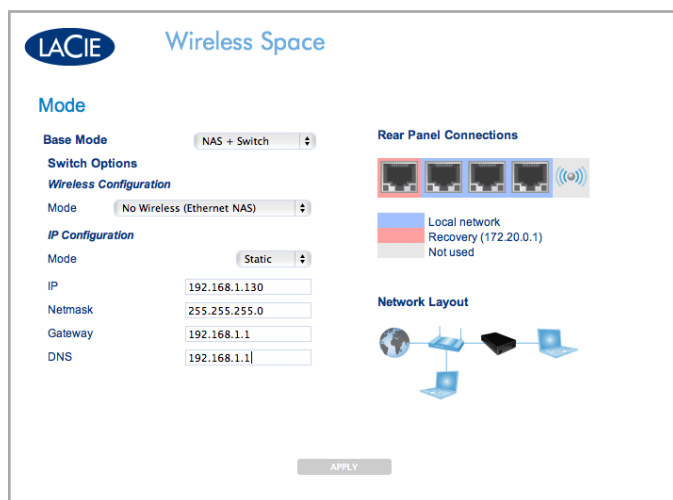


Fig. 90

3.6.10.2. Changing the Configuration Example: Wired Only to Wireless Client

Due to its flexibility as a network switch or router, the Wireless Space can grow with a network or adapt to different environments. The initial screenshots in this section are from the simplest configuration, [NAS Ethernet - Wired Only](#), which is a robust network disk and a simple switch for Ethernet expansion. Moving to the next Basic configuration, Wireless Client, requires a few easy changes in the [Mode](#) page.

IMPORTANT INFO: When changing the Wireless Space configuration, please make certain to read the user manual of your router, switch, Internet provider, or Wi-Fi access point. You should prepare all critical information before adjusting the Wireless Space settings.

In [Fig. 91](#), the [Mode](#) has been changed to Wireless Client and new fields appear to aid in setting up the configuration. To join an existing Wi-Fi network, enter the [SSID](#) (Service Set Identifier; essentially, the name of the Wi-Fi access point).

No Security

Security may be disabled on some Wi-Fi networks, as [Fig. 91](#) shows.

IMPORTANT INFO: LaCie strongly recommends against using any access point that does not have at least one level of security.

[continued on the next page >>](#)

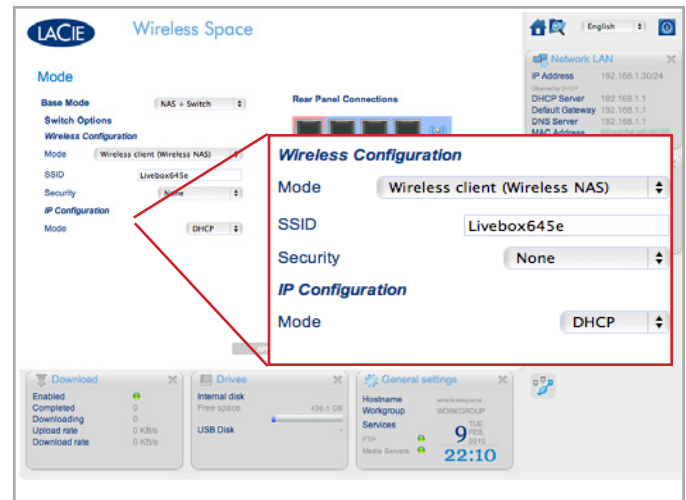


Fig. 91

Security

Most routers, switches, or Internet providers have at least one level of security. To make the change in configuration as easy as possible, please take the time to read the user manual of your network router and/or Wi-Fi access point. For this change on the Mode page, consider the following questions:

◆ Security (Fig. 92)

1. What is the name (SSID) of the Wi-Fi access point? In Wireless Client mode, the Wireless Space accepts letters (uppercase and lowercase), whole numbers, and the following symbols: . _ % + - = @ #

IMPORTANT INFO: The Wireless Space offers great flexibility when accepting the SSID of a wireless access point. In the unlikely event that your wireless access point includes characters not supported by the Wireless Space, joining the Wi-Fi network cannot be assured. Please consider searching the user manual for your wireless access point to determine a solution, such as changing its name for compatibility with the Wireless Space.

2. Is the security WEP, WPA1, or WPA2?
3. What is the security code for the network? In Wireless Client mode, the Wireless Space accepts letters (uppercase and lowercase) and whole numbers.
4. Does the Wi-Fi access support WPS (Wireless Protected Setup)? The Wireless Space includes a WPS button (1.4.1. Front View) that may be pushed to join a compatible WPS access point. See the user manual of your WPS access point for more information.

◆ IP addressing

1. Does your router and/or Wi-Fi access point act as a DHCP server?
2. Or, do you require a static IP address? Most Wi-Fi networks are DHCP by default, which reduces the need for management.
3. If static, what is an acceptable IP address? Each network has a range of addresses that can join it. An example of a range is 192.168.1.15 to 192.168.1.75.

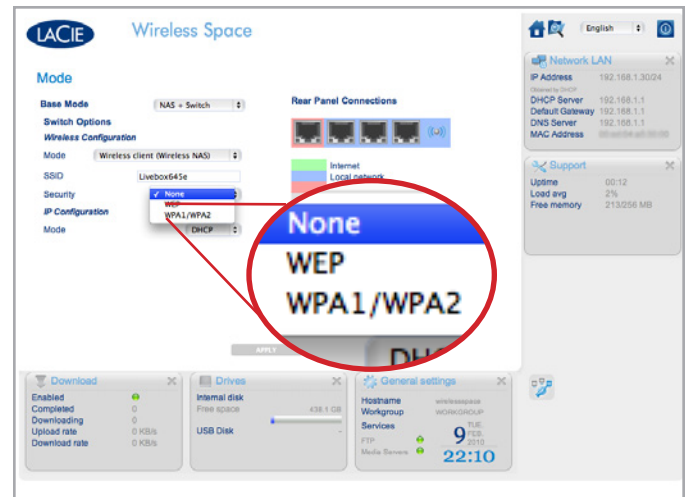


Fig. 92

continued on the next page >>

Simple Steps to a New Configuration

IMPORTANT INFO: While the Wireless Client will extend a Wi-Fi signal to another room, LaCie recommends running the Setup Wizard or changing the settings in the Dashboard close to the access point. It is far easier to manage the installation within proximity of both devices.

To make the change from [No Wireless](#) to [Wireless Client](#) ([Fig. 93](#)):

1. Keep the [Base Mode](#) at NAS+Switch
2. Change the [Mode](#) to [Wireless client \(Wireless NAS\)](#)
3. Enter the [SSID](#) (the name of the Wi-Fi access point)
4. Choose the [Security](#) (WEP or WPA) of the Wi-Fi access point
5. Enter the security code (WEP or WPA password security key of the wireless access point).
6. Choose the [IP Configuration](#) for the network. [Fig. 93](#) shows the [IP Configuration](#) as [DHCP](#) while [Fig. 94](#) uses a [Static IP](#) address. In the latter case, the user must know the range of IP addresses that he may use. For business networks, an administrator chooses an available IP address.
7. Click [APPLY](#)

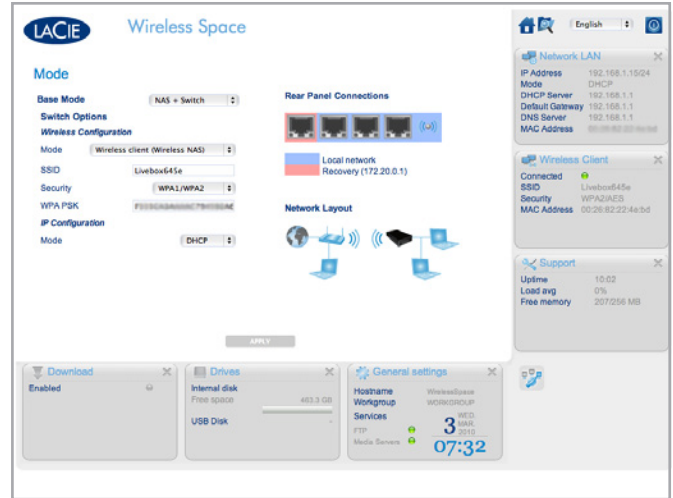


Fig. 93



Fig. 94

[continued on the next page >>](#)

8. A pop-up **Warning** will ask to confirm the configuration change (Fig. 95). Select **YES**.
9. The Dashboard will lose connection with the Wireless Space as the device executes the change in settings.
10. Disconnect the Ethernet cable from the Wireless Space to the Ethernet router, switch, or Internet provider. Connect the computer directly to the Wireless Space using any one of the LAN ports. For information on the INTERNET port, see [3.7. INTERNET Port: NAS+Switch](#). You may also reach the Dashboard by Wi-Fi if the computer is using the same access point and wireless network as the Wireless Space.
11. Please be patient and wait a minute before attempting to relaunch the Dashboard. Note that the light will change from green (Wi-Fi inactive) to blue (Wi-Fi active)
12. When the light turns solid blue, reconnect with the Dashboard ([3.4.1. Connect to the LaCie Wireless Space Dashboard using LaCie Network Assistant](#) & [3.4.2. Connect to the LaCie Wireless Space Dashboard directly from the browser](#)) to confirm the change in configuration.
13. To move the Wireless Space to a new location, shut it down in the Dashboard ([3.6.4. Dashboard: Shut Down or Restart the Wireless Space](#)). Once off, you may move the Wireless Space, plug in the power cable ([3.1. Connect the Power Supply](#)), and turn it on ([1.5. Power Button Functions](#)).
14. The Wireless Space light will turn solid blue, indicating that the device is ready for use. With the Wi-Fi network extended, connect devices such as computers or game systems to the Wireless Space similar to a switch. Please use one of the three ports marked LAN1, LAN2, or LAN3 on the back of the Wireless Space ([1.4.2. Rear View](#)). DO NOT connect the cable to the port named INTERNET ([1.4.2. Rear View](#)). LaCie recommends a Gigabit Ethernet cable for optimal performance ([1.6. Gigabit Ethernet Cables And Connectors](#)). See [3.7. INTERNET Port: NAS+Switch](#) for further information on the INTERNET port.

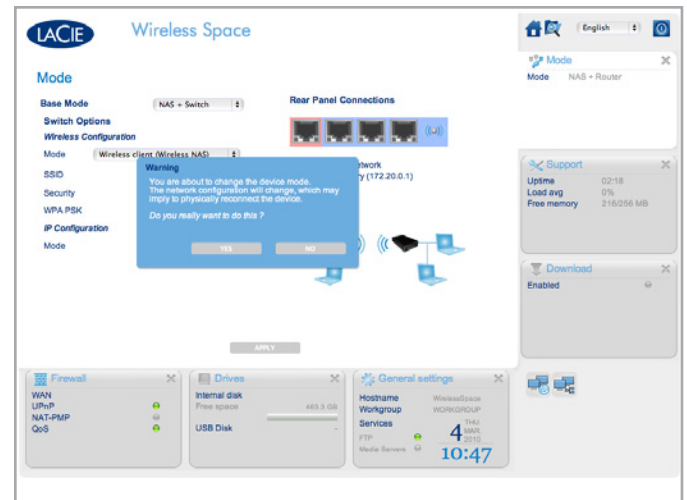


Fig. 95

3.6.11. Dashboard: Wireless Client

When using a Wireless Client configuration, the Wireless Space Dashboard includes a page named *Wireless Client* (Fig. 96). This page is divided by two tabs:

- ◆ *Available Networks* (Fig. 97). The Wireless Space lists the Wi-Fi networks in your area and offers a summary of each. The green network represents the Wi-Fi that the Wireless Space has joined.
- ◆ *Standard Settings* (Fig. 98). The current settings for the Wi-Fi network that the Wireless Space has joined. This tab allows you to change Wi-Fi networks as a Wireless Client. If you wish to change the Wireless Space configuration, use the Mode page.

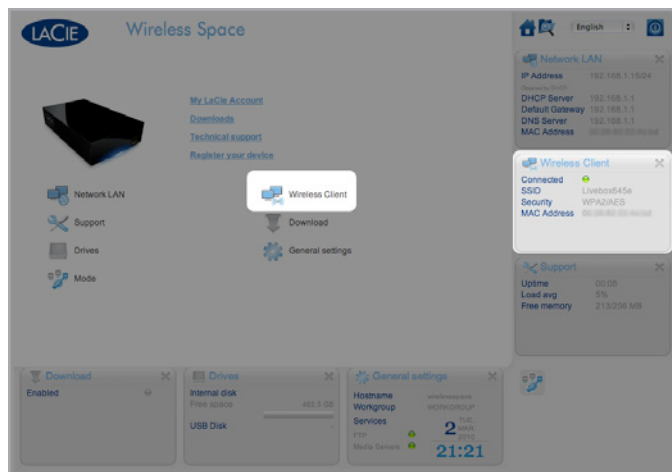


Fig. 96



Fig. 97



Fig. 98

3.7. INTERNET Port: NAS+Switch

The INTERNET port on the back of the Wireless Space will change function with the *Base Mode* (3.6.10.1. *Configuration Basics*). This section describes how best to use the INTERNET port when in NAS+Switch mode. See 4.6. *INTERNET Port: NAS+Router* for further information on the INTERNET port function in NAS+Router mode.

Recovery

The INTERNET port (Fig. 99) is a big help if there are problems communicating with the Wireless Space using any of the three LAN ports or via Wi-Fi (NAS+Switch Wireless Client and Wireless Access Point). Signs of a potential communication problem include:

- ◆ LaCie Network Assistant lists the Wireless Space but the web browser responds only with errors when typing the name or IP address in the URL field.
- ◆ LaCie Network Assistant does not list the Wireless Space even though it is properly connected via Ethernet or Wi-Fi.
- ◆ The front light is solid green or blue and the Ethernet lights in the back are both green or green and yellow, yet the web browser and/or LaCie Network Assistant cannot reach the Wireless Space.
- ◆ The browser continues to respond with errors when attempting to load the Dashboard with the device name or its last known IP address.

To troubleshoot the Wireless Space using the Recovery function:

1. Disconnect the Wireless Space from all LAN Ethernet ports.
2. Turn off or disconnect from any wireless service on the computer.
3. Confirm that the computer's network IP address setting is DHCP.
4. Connect a computer directly to the INTERNET port on the back of the Wireless Space (Fig. 100).
5. Click on the LaCie Network Assistant icon in the menu (Mac) or system tray (Windows) to find the Wireless Space. (Fig. 101).

[continued on the next page>>](#)

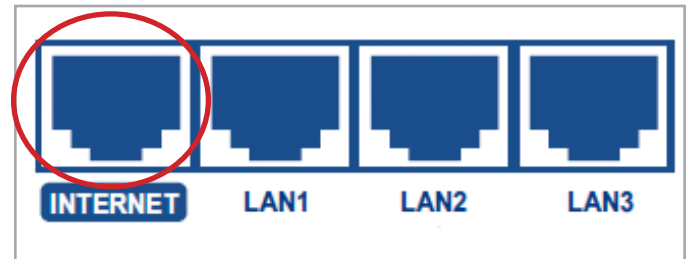


Fig. 99

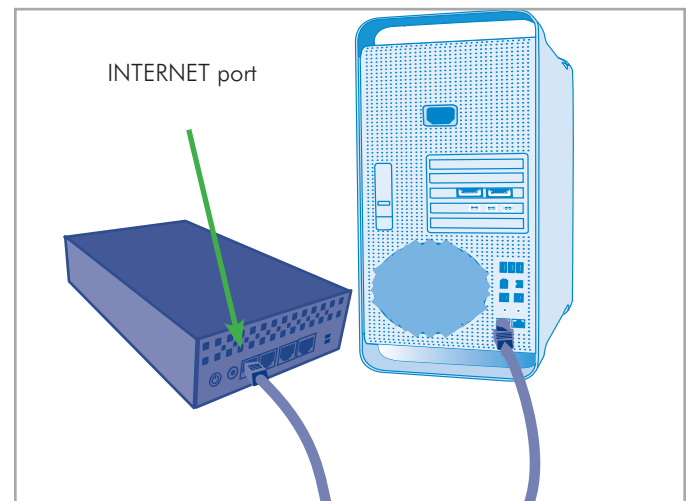


Fig. 100

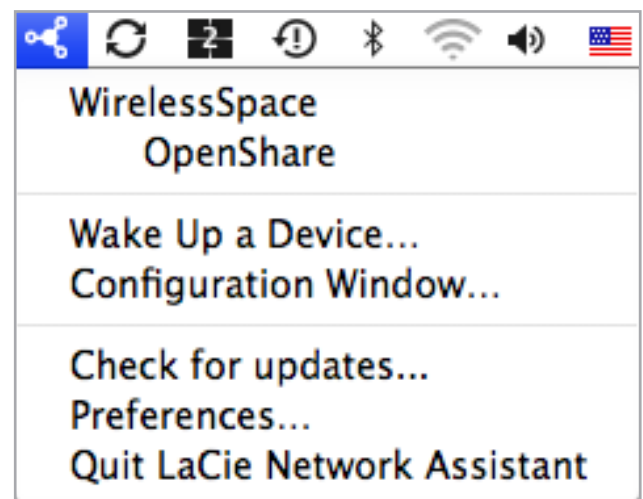


Fig. 101

6. Open [LaCie Network Assistant > Configuration Window](#) to see the addressing information. To access the Wireless Space Dashboard, do one of the following ([Fig. 102](#)):
 - ◆ Click the Web configuration page link in LaCie Network Assistant
 - ◆ Enter the Recovery IP address in the browser URL window 172.20.0.1
 - ◆ Enter the name of your Wireless Space in the browser URL
7. Enter the login and password created during setup ([Fig. 103](#)) to reach the Dashboard welcome page ([Fig. 104](#)). Check settings such as [Network LAN](#), [Wireless Client](#) (if applicable), or [Wireless AP](#) (if applicable) to make certain that all mandatory fields have been completed.
8. Once the problem has been found, quit the browser and disconnect the Ethernet cable from the INTERNET port. You may reattach the Ethernet cables as they were before troubleshooting the Wireless Space.

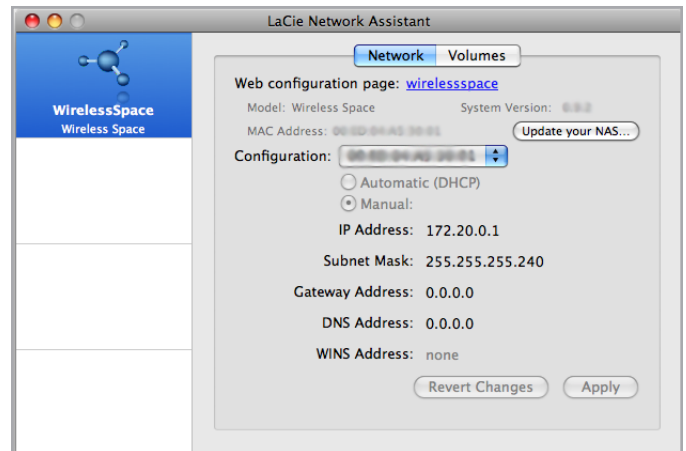


Fig. 102

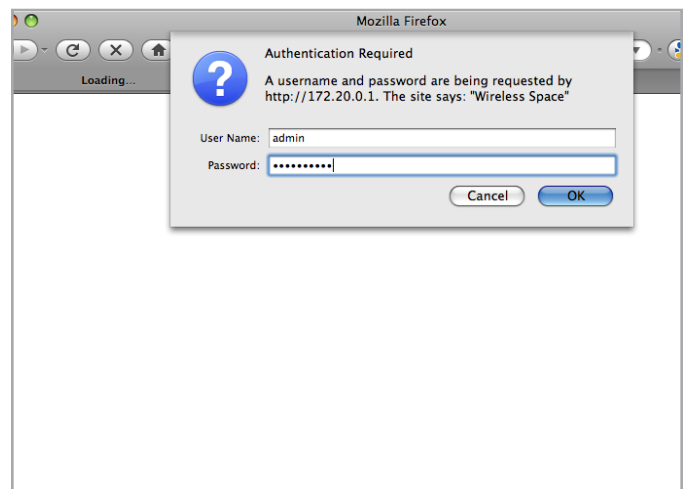


Fig. 103

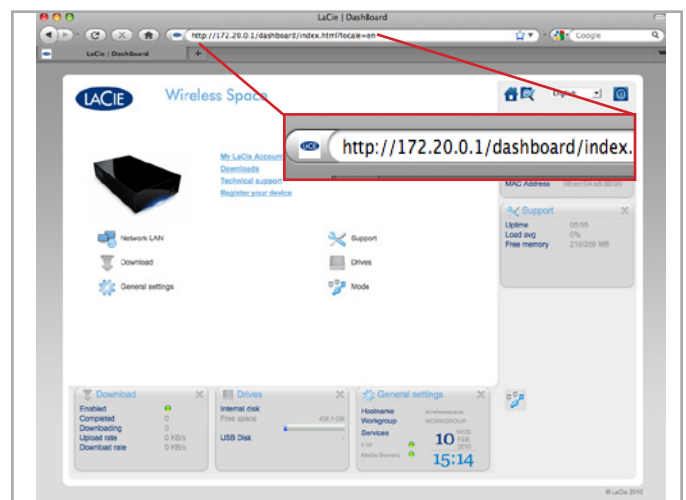


Fig. 104

3.8. Basic Endnote

This is the end of the Basic section. Please refer to the User Manual for tips on Troubleshooting (6. [Troubleshooting](#)), operation, or changes in the configuration. If you have become an expert in using the Wireless Space and the needs of your network have changed, consider one of the Beyond Basic modes in the next section.

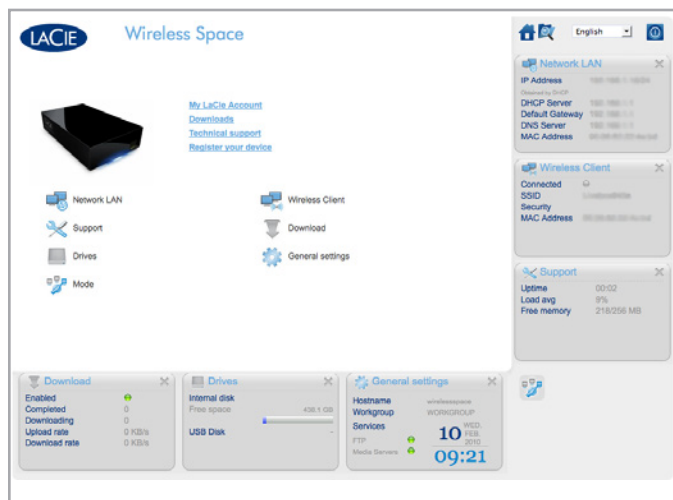


Fig. 105

4. Beyond Basic Install

Beyond Basic configurations reveal the rich set of features available to your Wireless Space. You may create a new Wi-Fi b/g/n access point and a second network for a home or small business. While the setup is not difficult, there are steps that require some understanding of your LAN (land area network) as well as how Internet, or WAN (wide area network), is delivered to your home or office.

The Beyond Basic configurations maintain their roots in the Basic section since many of the pages in the Wireless Space Dashboard do not change. However, there are additional pages in the Dashboard that target the needs of each mode. Therefore, rather than repeating the same information, this section will reference the passages in Basic that pertain to the installation and operation of the Wireless Space in a Beyond Basic configuration.



Fig. 106

Topics covered:

- [4.1. Before the Installation](#)
- [3.1. Connect the Power Supply](#)
- [4.2. Configuration 3: Wireless Access Point \(Switch\)](#)
- [4.3. Configuration 4: Router - Wired Only](#)
- [4.4. Configuration 5: Router Wireless Access Point](#)
- [3.4. LaCie Network Assistant](#)
- [4.5. Administering Your LaCie Wireless Space - Beyond Basic](#)

It is important to determine which configuration works best for your network. Please review [2. What is the best configuration for my network?](#) to find the preferred mode for your Wireless Space. With a configuration in mind, you may set the location for the Wireless Space before running the Setup Wizard and connecting it to your network.

MANUAL NOTE: The Beyond Basic section will cover most of the additional functions integral to the NAS+Switch Wireless Access Point and Router configurations. However, there are some advanced networking features that are not listed in this User Manual since their use for most customers is limited.

4.1. Before the Installation

The Wireless Space Setup Wizard is easy to follow as it guides you through the initial installation. When selecting a wireless configuration, you must have important Wi-Fi information on hand to make certain that you do not experience errors while running the Setup Wizard. Additionally, if you intend to use the Wireless Space as a router, please consider how it will connect to a WAN and manage the devices on its own network. Read the items listed below before starting the Setup Wizard.

All Configurations:

- ◆ What do you want to name the Wireless Space? The device name must have 4 to 15 alphanumeric characters and the first character cannot be a number; symbols are not allowed. The default is [WirelessSpace](#).
- ◆ What is your login? The login must have 2 to 16 alphanumeric characters and the first character cannot be a number; symbols are not allowed. The default is [admin](#).
- ◆ What password do you want to use? The password must be 8 to 16 characters; symbols are not allowed. The default is [admin](#).

Wireless Configurations (Wireless Access Point (NAS+Switch) & Router Wireless Access Point):

- ◆ What type of security do you want to use? The Wireless Space offers WEP, WPA1, and WPA2. You may also choose to have no security but that would leave your Wi-Fi open to any wireless device within range and could pose a threat to your network.
- ◆ What wireless security password do you want to use? WEP requires 10 or 26 hex characters. Hex characters are the letters A-F and the numbers 0-9. WPA must have 8 to 63 alphanumeric characters; symbols are not allowed.
- ◆ What version of 802.11 (Wi-Fi speed) do you want to use? The Wireless Space offers b/g/n.
- ◆ Not all computers, devices, or wireless accessories are compatible with all Wi-Fi security and 802.11 protocols. Please check the user manuals for the devices that will use the Wireless Space Wi-Fi network.

Router Configurations (Router Wired Only & Router Wireless Access Point)

- ◆ What type of network do you have at the moment? Most homes, home offices, and small businesses have an Internet provider that acts as a DHCP server. Similar to the Wireless Space Dashboard, many routers, servers, or Internet providers offer a web-based administration tool to manage the network. Accessing the administration tool will help to avoid networking conflicts and view critical settings. Please see the user manual of your router, server, or Internet provider for more information.
- ◆ How do you want to integrate the Wireless Space Router? The Wireless Space can join an existing network while managing a “sub-network” (the Wireless Space network) of devices. What

IP address do you want to assign the Wireless Space? Similar to most routers, the default router address for the Wireless Space is 192.168.1.1. However it may be changed on the Network LAN page in the Dashboard ([4.5.4. Dashboard: Network LAN](#)). The devices on the Wireless Space network will recognize this address as the router address.

- ◆ The address that joins an existing network is listed in the Wireless Space WAN Interface page in the Dashboard ([4.5.3. Dashboard: Network WAN](#)). The Wireless Space WAN interface IP is DHCP by default, but it can be changed to a static IP or PPPoE (point-to-point protocol over Ethernet). Addressing must be considered with care in order to avoid IP conflicts on the network.
- ◆ What is the range of IP addresses that you want to use for devices connected to the Wireless Space? The default is 192.168.1.100 to 192.168.1.250.
- ◆ DHCP Server Conflicts: Your network most likely receives IP addresses via a router, server, or Internet provider. The device that manages the IP addresses is generally referred to as a DHCP server. The Wireless Space, when configured as a router, also assigns IP addresses to all devices using its LAN Ethernet ports and/or wireless access point. Since it could affect the performance for all devices, a network should not have two DHCP servers attempting to assign IP addresses. Such a conflict may occur if the Ethernet cable between the router, server, or Internet provider and the Wireless Space is attached to one of the LAN ports. When using a router configuration, the Ethernet cable between the router, server, or Internet provider and the Wireless Space should connect to the INTERNET port on the back of the Wireless Space ([1.4.2. Rear View](#)). The WAN interface default setting for the Wireless Space is DHCP client, which means that your router, server, or Internet provider should accept it without a conflict. However, please see the user manual of your router, server, or Internet provider for further details on how it manages devices on the network. If it is not a DHCP server, you may have to assign a static IP address to the Wireless Space before attaching it to the network. See [4.6. INTERNET Port: NAS+Router](#) for more information on the INTERNET port and [4.5.3. Dashboard: Network WAN](#) to learn more on the Wireless Space WAN Interface and how to assign a static IP address.
- ◆ Devices such as computers and gaming systems use the LAN ports ([1.4.2. Rear View](#)) and/or the Wireless access point to join the Wireless Space network.
- ◆ Almost all settings may be changed at any time using the Wireless Space Dashboard.

IMPORTANT INFO: Please note that the Wireless Space has hardware and software reset features. You may reset the device to its default configuration so that it is ready to run the Setup Wizard. See [1.5. Power Button Functions](#) and [3.6.8. Dashboard: Support](#) for more information.

4.2. Configuration 3: Wireless Access Point (Switch)

IMPORTANT INFO: DO NOT attempt to access the Wireless Space via the web-enabled Dashboard (see [3.6.1. Dashboard: Accessing](#)) before running the Setup Wizard. During the initial configuration, the Setup Wizard must find the Wireless Space on the network. If the Dashboard has made contact with the device, the Setup Wizard will not run since it believes the choice of configuration has already been made. This could be problematic when attaching the Wireless Space to a network with a router, server, or Internet provider that assigns IP addresses using DHCP. Most DHCP servers or devices use the same default settings as the Wireless Space when it is set to a Router configuration, which can create IP address conflicts on a network.

Please see [2. What is the best configuration for my network?](#) before preparing your Wireless Space.

4.2.1. Wireless Space Setup Wizard

Preparing for the setup:

- ◆ Do not connect the Wireless Space to your router, switch, or Internet provider via Ethernet.
 - ◆ Quit the applications running on your computer, especially those having to do with Internet connectivity (web browsers, email, etc.)
 - ◆ If your computer is connected to the router, switch, or Internet provider via Ethernet, please disconnect the end from the router, switch, or Internet provider.
 - ◆ LaCie recommends that you disconnect from Wi-Fi networks while running the Wireless Space Setup Wizard. You may reconnect to a Wi-Fi once the setup is finished.
1. Connect the power cable to the Wireless Space (see [3.1. Connect the Power Supply](#)) and turn the device on ([1.5. Power Button Functions](#)). In most instances, the light will become solid green and turn red during the setup.
 2. Run the Utilities CD from the computer's optical disk drive. Launch the [Wireless Space Setup](#) when prompted. DO NOT install LaCie Network Assistant before running the Wireless Space Setup.
 3. Choose your language then select **OK**. After reading the welcome screen text, click [Continue](#).

[continued on the next page >>](#)

4. Select **Enable Wi-Fi**. Click **Continue**. (Fig. 107)
5. Select **NAS Extender Wi-Fi**. Click **Continue**. (Fig. 108)
6. You will be prompted to connect your computer to the Wireless Space. Please use one of the three ports marked LAN1, LAN2, or LAN3 on the back of the Wireless Space (1.4.2. Rear View). DO NOT connect the cable to the port named INTERNET (Fig. 109). LaCie recommends a Gigabit Ethernet cable for optimal performance (1.6. Gigabit Ethernet Cables And Connectors).
7. Once the Wireless Space has been connected to the computer, click **Continue**.
8. The Setup will search for your Wireless Space. Move to the next step if the device is found. If not, please reinsert the Ethernet connections on the Wireless Space and the computer before trying again.

continued on the next page>>

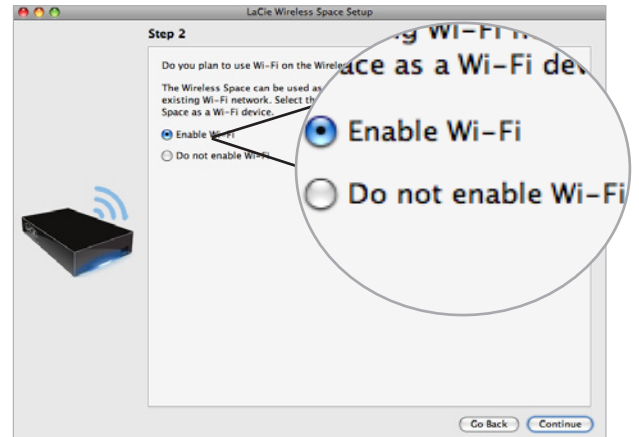


Fig. 107

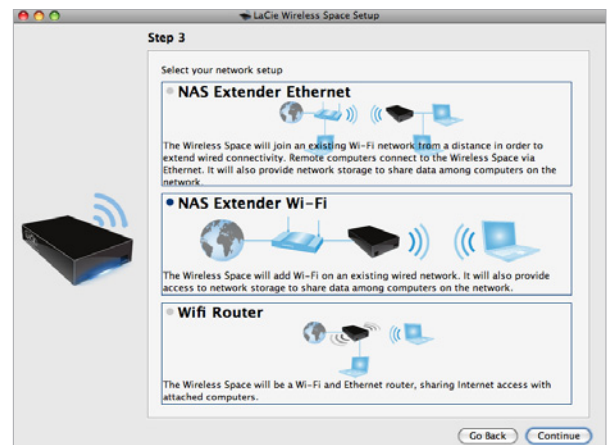


Fig. 108

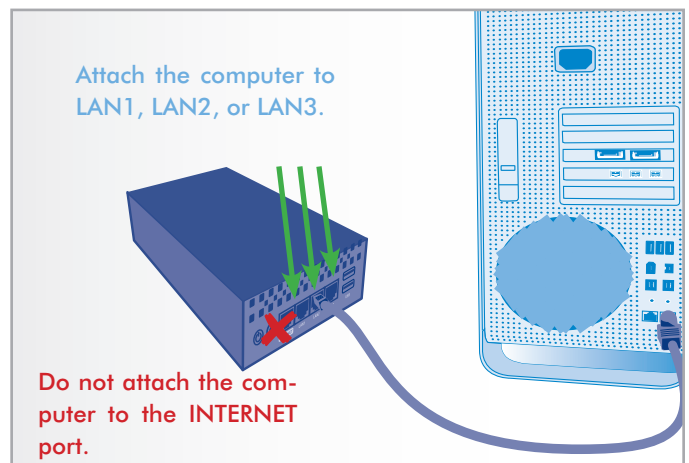


Fig. 109

9. You must provide the following information to create a Wi-Fi access point (Fig. 110):

- ◆ Network name
- ◆ Security protocol (Fig. 111)
- ◆ Password
- ◆ Speed (Fig. 112)
- ◆ See 4.1. *Before the Installation* for further information on how to fill out each field.
- ◆ Make certain to write down all the information so that you may use it when joining the Wireless Space Wi-Fi network from a wireless device.

IMPORTANT INFO: LaCie strongly recommends that all Wireless Space clients secure their Wi-Fi networks. For this reason, the Setup Wizard offers three levels of security and password protection when configuring the Wi-Fi access point. Please note that you may adjust these settings in the Dashboard administration tool after the installation. While the Setup and the Dashboard offer “None” as a security option, we urge all users to consider the risks to their home networks as well as potential drains on their wireless bandwidth.

[continued on the next page >>](#)

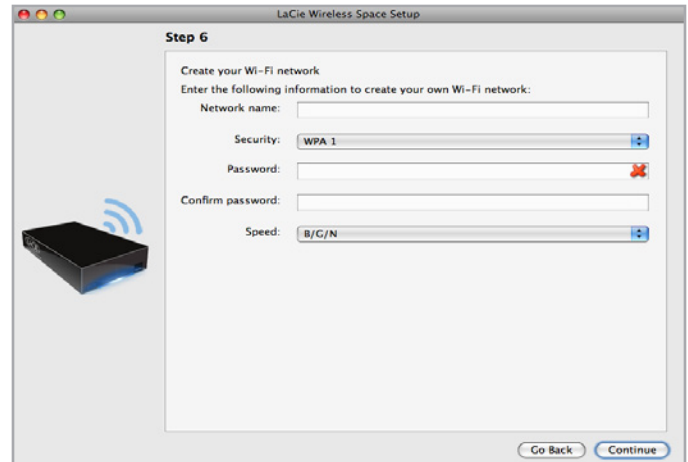


Fig. 110

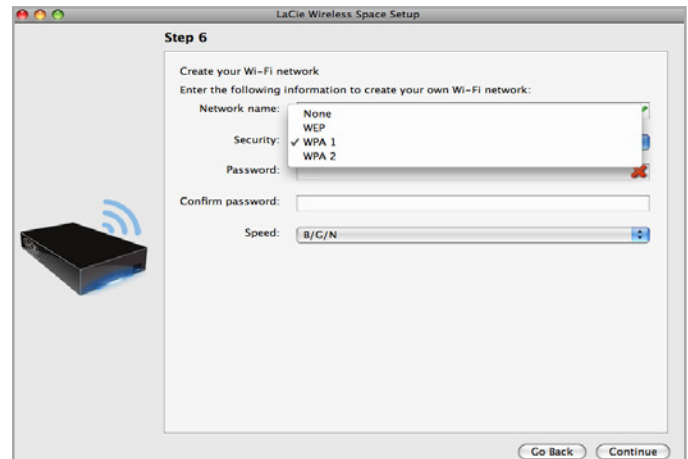


Fig. 111

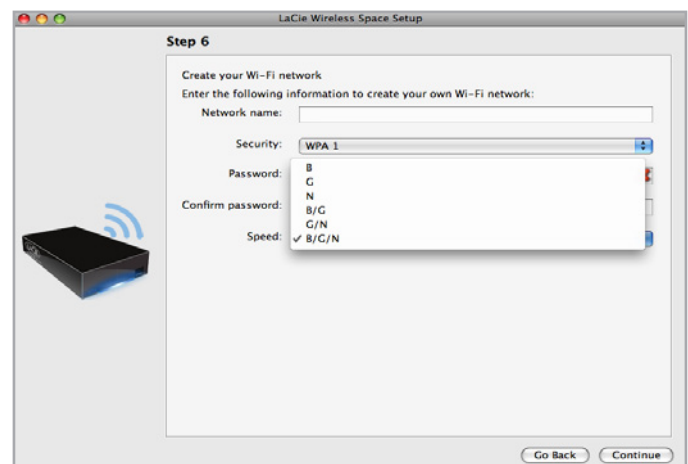


Fig. 112

10. Click [Continue](#) when all the fields are filled in (example, [Fig. 113](#)).
11. You must select and confirm a password that contains at least eight alphanumeric characters ([Fig. 114](#)). While not mandatory, LaCie recommends that you change the Login and Device name as well. Make certain to note your entries for future reference. Click [Commit](#) when you are have filled in all the fields.

IMPORTANT INFO: Frequent errors during the Setup may occur if too much time is taken to click [Continue](#) or [Commit](#). If you experience such errors, please consider your responses before starting the Setup Wizard.

12. Once the Wireless Space has restarted, the device light will turn solid blue, indicating that the wireless access point has been enabled.
13. You may connect the Wireless Space to the router, switch, or Internet provider via the included Gigabit Ethernet cable. Please use one of the three ports marked LAN1, LAN2, or LAN3 on the back of the Wireless Space ([1.4.2. Rear View](#)). DO NOT connect the cable to the port named INTERNET. LaCie recommends a Gigabit Ethernet cable for optimal performance ([1.6. Gigabit Ethernet Cables And Connectors](#)). Other devices on your network, such as computers or gaming systems, may use the available LAN ports or the wireless access point. See [3.7. INTERNET Port: NAS+Switch](#) for further information on the INTERNET port.
14. Go to [3.4. LaCie Network Assistant](#) to install LaCie Network Assistant.
15. Join the Wireless Space Wi-Fi network from a wireless device using the information (Wi-Fi name, security, and password) provided during the Setup.

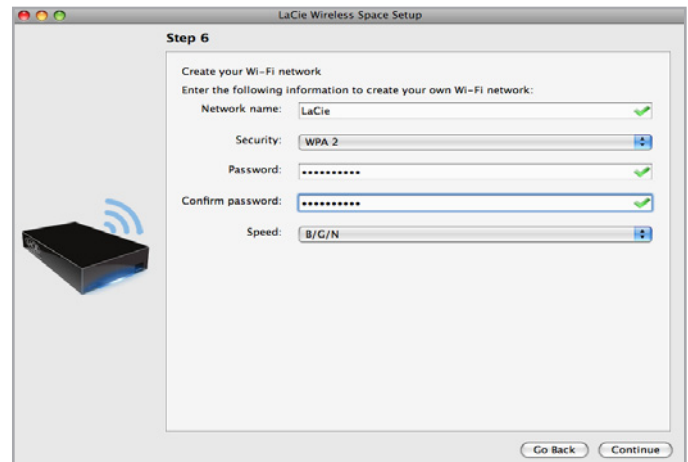


Fig. 113

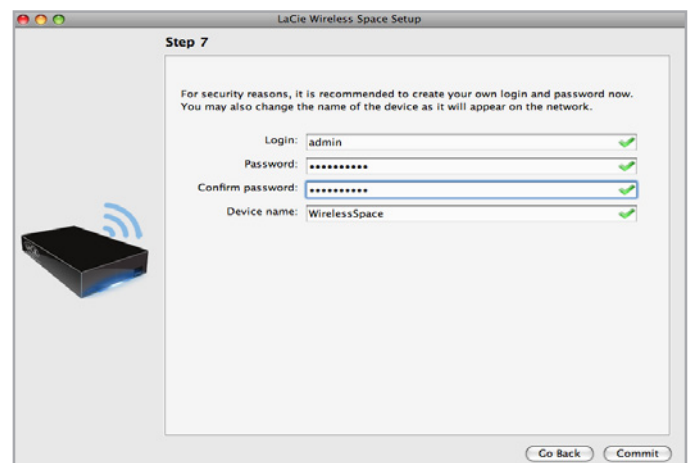


Fig. 114

4.3. Configuration 4: Router - Wired Only

IMPORTANT INFO: DO NOT attempt to access the Wireless Space via the web-enabled Dashboard (see [3.6.1. Dashboard: Accessing](#)) before running the Setup Wizard. During the initial configuration, the Setup Wizard must find the Wireless Space on the network. If the Dashboard has made contact with the device, the Setup Wizard will not run since it believes the choice of configuration has already been made. This could be problematic when attaching the Wireless Space to a network with a router, server, or Internet provider that assigns IP addresses using DHCP. Most DHCP servers or devices use the same default settings as the Wireless Space when it is set to a Router configuration, which can create IP address conflicts on a network.

Please see [2. What is the best configuration for my network?](#) before preparing your Wireless Space.

4.3.1. Wireless Space Setup Wizard

Preparing for the setup:

- ◆ Do not connect the Wireless Space to your router, switch, or Internet provider before running the Setup Wizard.
 - ◆ Quit the applications running on your computer.
 - ◆ Locate your router, switch, or Internet provider. If you are currently using a hub, please consider if it is necessary since the Wireless Space provides the same function with its additional Ethernet ports.
 - ◆ If your computer is connected to the router, switch, or Internet provider via Ethernet, please disconnect the end from the router, switch, or Internet provider.
 - ◆ If your computer is connected to the Internet or another WAN via Wi-Fi, turn it off for the Wireless Space setup.
1. Connect the power cable to the Wireless Space (see [3.1. Connect the Power Supply](#)) and turn the device on ([1.5. Power Button Functions](#)). In most instances, the light will become solid green and turn red during the setup.
 2. Run the Utilities CD from the computer's optical disk drive. Launch the [Wireless Space Setup](#) when prompted. DO NOT install LaCie Network Assistant before running the Wireless Space Setup.
 3. Choose your language then select **OK**. After reading the welcome screen text, click [Continue](#).
 4. Select [Do not enable Wi-Fi](#). Click [Continue](#). ([Fig. 115](#))

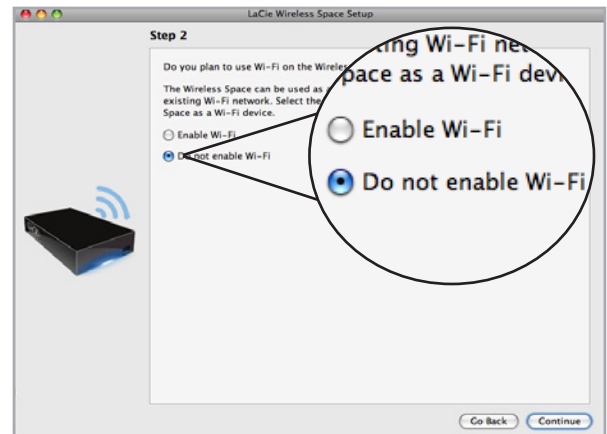


Fig. 115

[continued on the next page >>](#)