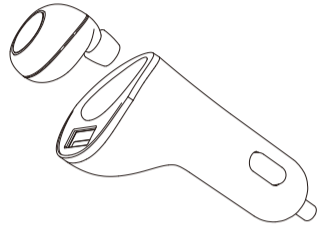


Sounds of nature sounds

CB10

产品规格说明书



"CB10"蓝牙耳机

内置蓝牙4.1和EDR模块。包含一块强力48MIPS的Dual-MAC DSP协议处理器。置降噪和消除回声增强音质。完整的音频支持, Bypass 模式输入和MONO模式输出。先进的HFP功能支持同时连接两部蓝牙耳机, 获取两个A2DP音频播放。支持Airostereo功能, 实现两个音频能相互连接, 并播放对方正在播放的内容。Airostereo功能设备无需多余的线材, 体验到无线音乐播放的乐趣。



特点

1. 蓝牙4.1
2. 1.3版本A2DP协议
3. 1.6版本HFP协议
4. 1.2版本HSP协议
5. 1.5版本AVRCP协议
6. 1.2版本SPP协议
7. 48MIPS双MAC-DSP协处理器
8. 支持降噪和消除回声
9. 多点连接HFP和A2DP设备
10. 支持语言功能



"CB10" BLUETOOTH HEADSET

按键操作	耳机状态	功能	语音播报	指示灯
1 长按	开机	开机	开机	红灯交替闪烁3次
2 长按	关机	关机	关机	红灯闪烁3次
3	连接	播放/暂停		
4 按一次	来电	接听	接听	
	语音	挂断	挂断	
	接听	接听	接听	
7 长按	连接/播放/暂停	接听一次通话/挂断	接听一次通话/挂断	
	来电	接听	接听	
9	来电	接听	接听	
10	配对密码	配对	配对	

原理示意图



1. 充电中
如果红色只是灯圈亮起, 说明充电仍未完成



2. 充电完成
如果蓝色指示灯圈亮起, 说明充电已完成

重新连接

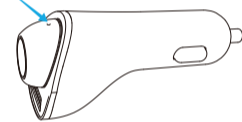
长按开机键3秒, 蓝色指示灯开始亮起
松开按键, 蓝牙会自动连接最后一次连接过的设备

如何使用Siri
连接后, 长按功能键2到3秒



如何给耳机充电及判断充电状态

1. 把耳机放入充电盒子内
2. 红色指示灯亮起时, 说明正在充电
3. 红色指示灯关掉, 充电完成



注意事项

1. 配对时间需要120秒
2. 如果没有其他蓝牙设备连接, 5分钟后耳机将自动关机
3. 耳机充电时长为1.5至2小时, 充电盒子充满电需要3小时
4. 如果长时间不使用蓝牙耳机, 请不要将耳机放置在充电盒子内
5. 佩戴方式

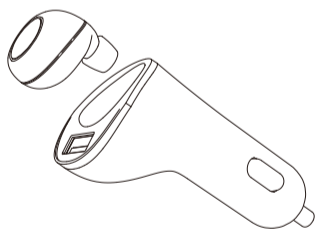


正常佩戴方式

Sounds of nature sounds

CB10

Product specifications

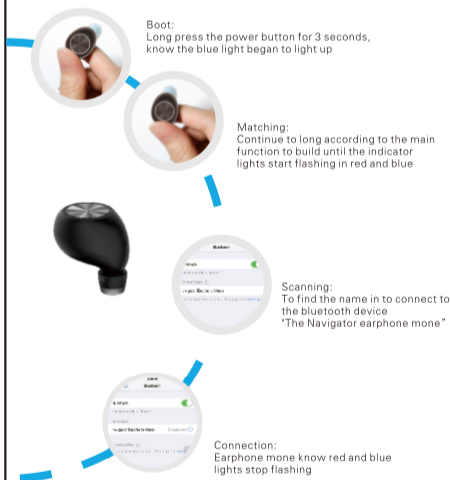
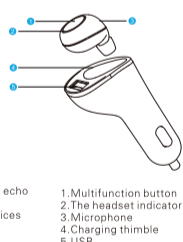


"CB10"BLUETOOTH

Built-in bluetooth 4.1 and EDR module. Contains a powerful 48 Dual - DSP MAC protocol of MIPS processor. Noise and elimination of echogenicity sound quality. Complete audio support, Bypass mode input and output MONO mode. Advanced HFP function support connecting two bluetooth devices at the same time, learn two A2DP audio playback. Support Airostereo functions, the realization of two audio can connect each other, and play the other side is play the content. Airostereo can make the equipment without redundant wire, experience the wireless music play fun.

characteristic

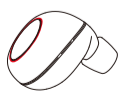
1. Bluetooth 4.1
2. 1.3 A2DP agreement
3. 1.6 version HFP agreement
4. 1.2 version of HSP
5. 1.5 version AVRCP agreement
6. 1.2 version SPP protocol
7. 48 MIPS double MAC - DSP coprocessor
8. Support for noise reduction and eliminate echo
9. Multipoint connection HFP and A2DP devices
10. Support functions of language



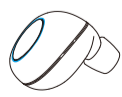
"CB10" BLUETOOTH HEADSET

keystrokes	State of the headset	function	speech	Indicator light
1 Long press	boot	boot	boot	Red and blue flashing 3 times
2 Long press	To turn it off	To turn it off	To turn it off	Red light flashing 3 times
3	The connection	Play/pause		
4	call	answer	answer	
	call	Hang up	Hang up	
6	Dial	Cancel the dial	Cancel the dial	
	Dial	Cancel the dial	Cancel the dial	
7 Hold down for a long time	Connect/play music	The last time dial call	The last time dial call	
	call	reject	reject	
9	Call	Number to broadcast	Number to broadcast	
10	Pairing password	Pairing password	Pairing password	

Principle diagram



1. In charge
If red just circle bright lights, That charge is not completed



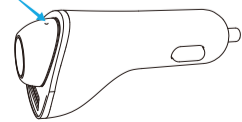
2. Charge to complete
If the blue indicator light ring lights up, That charging is complete

Reconnect the
Long press the power button for 3 seconds, the blue lights started flashing
Loosen the button, the bluetooth will automatically connect the last time
Connect the equipment
How to use Siri
After connecting, changan function keys from 2 to 3 seconds



How to judging the earpiece and charging status

1. Put the earphone into the charge inside the box
2. When the red light is lit up, that is charging
3. The red light is turned off, charging is complete



Matters needing attention

1. The matching time need 120 seconds
2. If there are no other bluetooth connection, the headset will automatically be turned off in five minutes
3. The headset charging time is 1.5 to 2 hours, charging box full of electricity it takes three hours
4. If long time not to use bluetooth headset, please don't place the headphones on charge inside the box
5. Wear way



Wearing a normal way

NOTE: This equipment has been tested and found to comply with the limits for a Class B digital device, pursuant to part 15 of the FCC Rules. These limits are designed to provide reasonable protection against harmful interference in a residential installation. This equipment generates uses and can radiate radio frequency energy and, if not installed and used in accordance with the instructions, may cause harmful interference to radio communications. However, there is no guarantee that interference will not occur in a particular installation. If this equipment does cause harmful interference to radio or television reception, which can be determined by turning the equipment off and on, the user is encouraged to try to correct the interference by one or more of the following measures:

- Reorient or relocate the receiving antenna.
- Increase the separation between the equipment and receiver.
- Connect the equipment into an outlet on a circuit different from that to which the receiver is connected.
- Consult the dealer or an experienced radio/TV technician for help

Changes or modifications not expressly approved by the party responsible for compliance could void the user's authority to operate the equipment. This device complies with Part 15 of the FCC Rules. Operation is subject to the following two conditions:

- (1) this device may not cause harmful interference, and
- (2) this device must accept any interference received, including interference that may cause undesired operation.