



AirCard® 595 Wireless WAN Adapter

Installation Guide

2130681
Rev 0.3a

Important Notice

Due to the nature of wireless communications, transmission and reception of data can never be guaranteed. Data may be delayed, corrupted (i.e., have errors) or be totally lost. Although significant delays or losses of data are rare when wireless devices such as the Sierra Wireless modem are used in a normal manner with a well-constructed network, the Sierra Wireless modem should not be used in situations where failure to transmit or receive data could result in damage of any kind to the user or any other party, including but not limited to personal injury, death, or loss of property. Sierra Wireless accepts no responsibility for damages of any kind resulting from delays or errors in data transmitted or received using the Sierra Wireless modem, or for failure of the Sierra Wireless modem to transmit or receive such data.

Safety and Hazards

Do not operate the Sierra Wireless modem:

- In areas where blasting is in progress
- Where explosive atmospheres may be present
- Near medical equipment
- Near life support equipment, or any equipment that may be susceptible to any form of radio interference. In such areas, the Sierra Wireless modem **MUST BE POWERED OFF**. The Sierra Wireless modem can transmit signals that could interfere with this equipment.

Do not operate the Sierra Wireless modem in any aircraft, whether the aircraft is on the ground or in flight. In aircraft, the Sierra Wireless modem **MUST BE POWERED OFF**. When operating, the Sierra Wireless modem can transmit signals that could interfere with various onboard systems.

Note: Some airlines may permit the use of cellular phones while the aircraft is on the ground and the door is open. The Sierra Wireless modem may be used at this time.

The driver or operator of any vehicle should not operate the Sierra Wireless modem while in control of a vehicle. Doing so will detract from the driver or operator's control and operation of that vehicle. In some states and provinces, operating such communications devices while in control of a vehicle is an offence.

Limitation of Liability

The information in this manual is subject to change without notice and does not represent a commitment on the part of Sierra Wireless. SIERRA WIRELESS AND ITS AFFILIATES SPECIFICALLY DISCLAIM LIABILITY FOR ANY AND ALL

DIRECT, INDIRECT, SPECIAL, GENERAL, INCIDENTAL, CONSEQUENTIAL, PUNITIVE OR EXEMPLARY DAMAGES INCLUDING, BUT NOT LIMITED TO, LOSS OF PROFITS OR REVENUE OR ANTICIPATED PROFITS OR REVENUE ARISING OUT OF THE USE OR INABILITY TO USE ANY SIERRA WIRELESS PRODUCT, EVEN IF SIERRA WIRELESS AND/OR ITS AFFILIATES HAS BEEN ADVISED OF THE POSSIBILITY OF SUCH DAMAGES OR THEY ARE FORESEEABLE OR FOR CLAIMS BY ANY THIRD PARTY.

Notwithstanding the foregoing, in no event shall Sierra Wireless and/or its affiliates aggregate liability arising under or in connection with the Sierra Wireless product, regardless of the number of events, occurrences, or claims giving rise to liability, be in excess of the price paid by the purchaser for the Sierra Wireless product.

Patents

**QUALCOMM®
3G CDMA**

Licensed by QUALCOMM Incorporated under one or more of the following United States patents and/or their counterparts in other nations:

5,515,013	5,629,960	5,845,216	5,847,553	5,878,234
5,890,057	5,929,815	6,169,884	6,191,741	6,199,168
6,339,405	6,359,591	6,400,336	6,643,501	6,516,204
6,561,851	6,653,979	6,697,030	6,785,830	6,845,249
6,847,830	6,876,697	6,879,585	6,886,049	6,968,171
6,985,757	7,023,878,	D442,170	D459,303	

Manufactured or sold by Sierra Wireless Inc., its Affiliates, or its Licensees under one or more patents licensed from InterDigital Group.

Copyright

©2006 Sierra Wireless. All rights reserved.

Trademarks

AirCard and “Heart of the Wireless Machine” are registered trademarks of Sierra Wireless.

Sierra Wireless, the Sierra Wireless logo, the red wave design, the red-tipped antenna, and Watcher are trademarks of Sierra Wireless.

Windows[®] is a registered trademark of Microsoft Corporation.

QUALCOMM[®] is a registered trademark of QUALCOMM Incorporated.

InstallShield[®] is a registered trademark of Macrovision Corporation in the United States of America and/or other countries.

Other trademarks are the property of the respective owners.

Comments

Sales Desk:	Phone:	1-604-232-1488
	Hours:	8:00 AM to 5:00 PM Pacific Time
	E-mail:	sales@sierrawireless.com
Post:	Sierra Wireless 13811 Wireless Way Richmond, BC Canada V6V 3A4	
Fax:	1-604-231-1109	
Web:	www.sierrawireless.com	

Additional information and updates

For up-to-date product descriptions, documentation, application notes, [firmware](#) upgrades, troubleshooting tips, and press releases, visit. www.sierrawireless.com.

>> Table of Contents

Introducing the AirCard® 595 Wireless WAN Adapter	7
Welcome	7
Feature summary	7
Wireless WAN adapter	8
CDMA 3G services	8
Additional AirCard features	9
Package contents	9
System components	9
Your host computing device	9
The AirCard 595 wireless WAN adapter	10
The AirCard drivers and enabling software	10
A CDMA service provider account	10
The CDMA wireless network	11
Getting Started	12
The AirCard 595 software	12
Account activation and configuration	12
Installation	14
System requirements	14
AirCard software installation procedures	15
Card insertion and removal	16
Inserting the AirCard	16
Removing the AirCard	16
Activation	17
Account configuration procedures	17
Activation Wizard	17
Manual activation	18

Automated activation	18
Care and Maintenance of Your AirCard	20
Watcher Basics	21
Starting and closing Watcher	21
Components of the Watcher window.....	22
Window controls	22
Docking	23
Always On Top	23
Interpreting icons	23
Connection Status Area	24
Call Status Area	25
Indicator area	25
Minimized icons	26
Online Help	26
Troubleshooting	27
Technical Specifications	28
LED operation	28
Radio frequency and electrical specifications	28
Environmental specifications	29
Regulatory Information	30
Regulatory notices	30
Information pertaining to OEM customers	31
Glossary	33
Index	36

1: Introducing the AirCard® 595 Wireless WAN Adapter

- [Welcome](#)
- [Feature summary](#)
- [Package contents](#)

Note: Do not insert the AirCard into your PC Card slot prior to installing the software. It is important to install the software and driver in the correct order. For detailed procedures, see [page 14](#).

Note: For step-by-step instructions to access features of the AirCard, consult the [online help](#) available with Watcher™ ([page 26](#)).

Note: This document applies to you, only if your wireless adapter is the AirCard 595 PC Card from Sierra Wireless. This document does not apply, if you are using a wireless adapter that is built into your computer.

Welcome

The Sierra Wireless AirCard 595 wireless WAN adapter is a dual-band wireless PC Card for cellular and North American PCS networks. It enhances the functionality of your mobile computing device by adding wireless data and 2-way messaging.

This card allows you to do the following (subject to feature availability), without using a wireline phone or network:

- Connect to the Internet, [VPN](#) and corporate networks
- Send and receive e-mail
- Send and receive [SMS](#) messages

Note: You can view this guide online or print it to keep on hand. If you're viewing it online, simply click a topic in the Table of Contents, or a page number in the Index, or any page reference or section reference. (Most text that is blue is a clickable link.) The PDF automatically displays the appropriate page.

Feature summary

The AirCard is designed to provide a wide range of capabilities using [CDMA](#) network technology. Implementation of these features depends on the particular service provider and account features you have chosen.

Some features described in this manual may not be supported by your service provider or may not be available with your network account. For details of the services and accounts available, contact your service provider.

Wireless WAN adapter

Once installed and configured, the AirCard can connect to the [CDMA](#) network automatically. You just insert the AirCard, allow Watcher to autolaunch and authenticate your account on the network, then launch your Internet browser (which you can also configure in Watcher to launch automatically)—you're online!

TBD The AirCard also allows you to dial up a modem (such as a corporate server).

CDMA 3G services

The AirCard operates over a type of wireless network called [CDMA](#) (Code Division Multiple Access).

CDMA 3G technology provides a variety of connectivity features, depending on your service provider and account:

- [1x-EVDO Rev. A](#) supports Internet connections with data rates up to 3.1 [Mbps](#) (downlink from the network) and 1.8 [Mbps](#) (uplink to the network). Average data rates are roughly [TBD] [Mbps](#) (downlink from the network) and [TBD] [Kbps](#) (uplink to the network). Actual speed depends on the network conditions.
- [1x-EVDO Rev. 0](#) supports Internet connections with data rates up to 2.4 [Mbps](#) (downlink from the network) and 153 [Kbps](#) (uplink to the network). Average data rates are roughly 400-700 [Kbps](#) (downlink from the network) and 40-60 [Kbps](#) (uplink to the network). Actual speed depends on the network conditions.
- [1X](#) supports Internet connections with data rates up to 153 [Kbps](#) (downlink from the network) and 76.8 [Kbps](#) (uplink to the network). Actual speed depends on the network conditions.

Once the connection is established, you can open your browser and connect to any web site that is accessible through the Internet, or access other Internet services (such as e-mail).

The connection is "active" when data transmission is occurring. If data transmission stops for a period of time (determined by the network), the connection becomes "dormant"; see [page 25](#).

- **TBD Circuit switched (dial-up) data**, using the earlier [CDMA IS-95](#) specification, supports data connections to any dial-in service at rates up to 14.4 [Kbps](#).
- **TBD QNC (Quick Net Connect)**, provides a simplified way to dial into an Internet connection (using circuit

switched data) where 3G (1xEV-DO or 1X) high-speed packet service is not available.

- **SMS (Short Message Service)**, allows you to send and receive short text messages using the AirCard.

Additional AirCard features

Beyond the features of the CDMA network, the AirCard provides additional software features:

- PIN security code to protect your AirCard and account from unauthorized use.
- An Activation Wizard (page 17) to assist with configuring your CDMA account.
- Sound options to customize ringtones for SMS messages.
- A Call Log to track outgoing calls and determine the amount of data transferred.

Package contents

Your AirCard package contains the following components:

- AirCard 595 wireless WAN adapter
- Installation CD containing the AirCard software and this installation guide
- Quick Start Guide
- Warranty Card

System components

Your AirCard 595 wireless WAN adapter is just one part of a system designed to provide you with a wide range of communication features. Every component of the system is needed to enable these capabilities.

Your host computing device

Your notebook hosts the AirCard hardware and runs the communication software: your web browser or e-mail application, and Watcher—the AirCard enabling software.

You may also have other software on your computer that can be used wirelessly with the AirCard, such as: file transfer applications (FTP), chat or instant messaging, a VPN (Virtual Private Network) client, client software for a corporate server application.

The AirCard 595 wireless WAN adapter

The AirCard provides your computer with a connection to the CDMA wireless network.

The AirCard fits into a standard Type II PC Card slot available on most notebook PCs.

Every CDMA network operates on one of three radio frequency bands. As a dual-band product, the AirCard operates on two of these bands (see [page 28](#)), providing a wide coverage area.

The AirCard drivers and enabling software

Required to control, monitor, and manage your wireless connections, this includes the Watcher application.

The AirCard comes with a CD containing this software:

- Watcher application that you use to manage the AirCard and monitor your connections. For step-by-step instructions to access features of Watcher, use the application's [online help](#).
- The device driver software that enables the AirCard to work with your computer's operating system.

The driver and application software *must* be installed before you insert the AirCard for the first time. Detailed instructions are provided in the following chapters.

A CDMA service provider account

Companies that operate CDMA networks and provide access to these networks are called *service providers*. To use the AirCard, you must have an account with a CDMA service provider.

Each service provider has its own pricing options. There may be flat rate accounts, which provide you a maximum number of minutes of network usage for a fixed monthly fee. There may be accounts for which you are charged for network usage by the minute or by the amount of data transmitted.

Your account may include a variety of other services such as SMS messaging.

Each AirCard has been provisioned at the factory for use with a particular service provider. This sets the AirCard to use particular radio channels and enables services specific for that provider.

Note: You can use the Lock Code feature to prevent others from using your account should your AirCard be stolen. For information on this feature, see the [online help](#).

The process of setting up your account is called *activation*. Activation involves action by the service provider and configuration of the AirCard.

The procedure to configure (activate) your AirCard is covered in “[Activation](#)” on page 17.

The CDMA wireless network

This is the worldwide infrastructure providing the radio coverage that allows you to stay connected. Made up of radio towers and a variety of network switches, routers, and servers, the network is an interconnection of many service providers.

There are [CDMA](#) networks that operate in the frequency bands supported by the AirCard throughout North America and parts of Latin America, Asia, New Zealand, and Australia. However, each service provider operates a network that covers a limited geographical area within the overall CDMA coverage area.

Most service providers have “[roaming](#)” agreements with other service providers, so that they can offer service outside of the coverage area of their own networks. For example, assuming you live in Vancouver and travel frequently to Seattle, you can obtain an account with a Vancouver service provider that has a roaming agreement with a service provider in Seattle. You would then have local service in Vancouver, and roaming service in Seattle.

Note: More information about [CDMA](#) networks is available on the CDMA Development Group web site, www.cdg.org.

Note: Most service providers have coverage maps on their web sites.

Note: The fee for service is usually higher when you are roaming (connecting to a network other than the one belonging to your service provider).

2: Getting Started

- [The AirCard 595 software](#)
- [Account activation and configuration](#)

Before you can begin using the AirCard, you must:

1. Install the AirCard enabling software and driver.
2. Activate an account and configure the AirCard to use your account (unless the AirCard has been pre-activated).

This section provides an overview of this process.

The AirCard 595 software

The AirCard comes with this software:

- Watcher application that you use to manage the AirCard and monitor your connections
- The driver software that provides the interface between the AirCard and your Windows operating system

The Watcher software must be installed before you insert the AirCard for the first time. Detailed instructions are provided in [“Installation”](#) on page 14.

Account activation and configuration

To use the AirCard, you must have an account with a [CDMA](#) service provider. The process of setting up an account is called *activation*.

If you purchased the AirCard directly from a service provider, you may already have an account; your AirCard may be pre-activated.

Otherwise, run Watcher and the Activation Wizard, which guides you through the activation and configuration process. (Depending on your configuration, Watcher and the Activation Wizard may start automatically.)

Configuring the AirCard involves setting the phone number assigned by your service provider and may involve entering other network parameters and settings such as a user name and password to access services.

Your service provider needs to know:

- The billing information to use to collect payment for your network usage.
- The **ESN** (Electronic Serial Number) or **MEID** (Mobile Equipment Identifier) assigned to your AirCard during the manufacturing process. (The ESN or MEID is printed on a label on the AirCard and can be displayed in Watcher.) This number is used to help authenticate your account when you connect for service.

You require from your service provider:

- An activation code that gives you access to configure the account.
- A phone number for your AirCard.
- Additional information specific to your service provider such as:
 - A user ID (username) and password to authenticate your network connection.
 - A SID (System Identifier) that identifies your home network area and is used together with your phone number to determine if you are “home” or “**roaming**”.

3: Installation

- [System requirements](#)
- [Installation](#)
- [Inserting the AirCard](#)
- [Removing the AirCard](#)

This chapter guides you through the steps necessary to install the AirCard on a notebook PC.

Note: Do not insert the AirCard into your PC Card slot before installing the software.

The basic steps are:

1. Insert the AirCard 595 installation CD into your CD-ROM drive and install Watcher.
2. Insert the AirCard into the PC Card slot ([page 16](#)) to install the AirCard drivers.
3. If the AirCard has not been pre-activated, use the Activation Wizard to configure the AirCard (as described in ["Activation"](#) on page 17).

Before you begin the installation process, ensure your PC is running a supported operating system and meets the hardware requirements described below.

System requirements

The AirCard is supported on notebook PCs running:

- Windows Vista
- Windows 2000 with Service Pack 1 or later (Service Pack 4 is recommended)
- Windows XP (Home and Professional versions)

To install the AirCard, you require these system resources:

Table 3-1: System resource requirements

Card slots	1 Type II PCMCIA (PC Card) Slot
Disk drive	CD-ROM (for installation only)
I/O resources	1 IRQ, 40 bytes I/O Space
Memory	10 MB
Disk space	10 MB

AirCard software installation procedures

To install Watcher and the AirCard driver:

Note: Users of Windows 2000 must be logged in with administrative privileges to install the AirCard software. Users of Windows XP may require administrative privileges, depending on the XP installation.

1. If the installation CD is not already in your CD-ROM drive, insert it. The CD should autostart and display a menu.
If the CD does not autostart, select **Start > Run** and enter **d:\launch.exe** where **d** is the drive letter of your CD-ROM drive.
2. From the CD startup window, select **notebook installation** and then **notebook software installation** to launch the InstallShield® Wizard.
3. If the Open With... window appears, cancel the installation (your computer is missing some files required for the installation). Search for Instmsiw.exe (if you're running Windows 2000) among the downloads at www.microsoft.com. Install the file on your computer, then rerun the AirCard software installation.
4. If the Ikernel Application Error window appears:
 - a) Cancel the installation.
 - b) Download the file:
<http://support.installshield.com/kb/files/Q108312/ikernelupdate.exe>
 - c) Install the file on your computer, then rerun the software installation.
5. Use the **Next** and **Back** buttons to navigate through the wizard noting the following:
 - To proceed with the installation, you must click **I accept the terms in the license agreement** to indicate your acceptance of the terms of the license agreement.
 - Use the default settings for the Destination Folder unless you have special requirements and an advanced understanding of PC configuration. (The Destination Folder dictates where the software is installed.)
6. If you are running Windows XP, a window indicates that the driver files will be copied to your notebook. Click **OK**.
7. When you are prompted to insert the AirCard, click **OK**. Insert the AirCard into your PC Card slot (refer to [page 16](#)).
8. When you are notified that the installation is complete, click **OK**.

Note: Do not forcefully insert the AirCard. This may damage connector pins. For instructions on removing the AirCard, see [page 16](#).

On completion of this step, Watcher and the AirCard driver are installed.

Proceed to configure the AirCard to use your account (if it was not pre-activated). See “[Activation](#)” on page 17.

Card insertion and removal

Inserting the AirCard

To insert the AirCard into a notebook:

1. With the picture label facing up, insert the AirCard into the slot.

When you insert the AirCard, the following should occur:

- If sound effects are enabled, the PC beeps.
- The PC Card icon appears in the [system tray](#), if it is not already displayed for another card, (and unless the feature has been disabled).**[Icon for Windows Vista TBD]**

Windows 2000



Windows XP



- Watcher launches (unless the autolaunch feature has been disabled).

The AirCard is powered as soon as you insert it.

Removing the AirCard

To remove the AirCard:

1. Close Watcher if it is open.
2. Click the PC Card icon in the [system tray](#) to display the option to stop the card.**[Icon for Windows Vista TBD]**

Windows 2000



Windows XP



3. Click “Safely remove NEC PCI to USB OpenHost Controller”.
4. If a dialog box appears notifying you that it is safe to remove the card, click **OK**.
5. Use the ejector to remove the AirCard from the slot.

4: Activation

- Account configuration procedures
- Manual activation
- Automated activation

Account configuration procedures

The final step to making the AirCard operational is configuring it to use your [CDMA](#) service provider account. The process of activation configures your AirCard with the required account parameters (phone number, username, password, etc.).

If you purchased a pre-activated AirCard, this step is not necessary. Once the application software and driver are installed, the AirCard is ready for use.

Otherwise, you must use the Activation Wizard to activate and configure your account.

Activation Wizard

The Activation Wizard walks you through the process of configuring an account. The process and options vary based on the service provider.

This section is a guide only. Consult the Quick Start Guide, and follow the directions on screen and instructions given by your service provider representative.

To activate an account and configure your AirCard for use:

If your AirCard does not have an activated account, and Watcher has started automatically, then the Activation Wizard should start automatically. If this does not happen:

1. Ensure Watcher is running. If it is not, select **Start > Programs > Sierra Wireless > AirCard 595 > AirCard 595 Watcher**.
2. Start the Activation Wizard: select **TOOLS > Activation Wizard**.

To begin activation of the AirCard, click **Next**.

Manual activation

Activation involves phoning your service provider, exchanging information, and entering your account information into the appropriate fields in the wizard. (To use this method, you require a phone.)

To use manual activation, use the **Next** and **Back** buttons to navigate through the wizard, noting the following:

- Obtain the billing information listed on the second window of the wizard before phoning the service provider or proceeding to the next window.
- Contact your service provider. Inform your service provider that you are activating your Sierra Wireless AirCard 595. The representative will request your **ESN** (Electronic Serial Number) or **MEID**. This is displayed in the Activation Wizard (and is printed on the AirCard box and on the label on the back of the AirCard).
- As prompted by the wizard, enter the information provided by the service representative.
- Select **Finish** in the final window of the wizard.

On completion of the Activation Wizard, the AirCard is ready for use. The following chapters explain how to use Watcher to manage and monitor your connections.

Automated activation

To use automated activation:

1. Select the **Automated Activation** radio button and click **Next**.
2. The wizard advises that it will make a network connection, dialing the displayed number. Leave the number unchanged unless told by a technical service representative to enter a different value. Click **Next**.
3. Follow any instructions or prompts provided to activate the card.

Watcher displays the activation progress in the [Call Status Area](#). When the process is complete you should see the message "Ready to Connect".

Note: If you do not get the "Ready to Connect" message, retry the process. If the process continues to fail, use [manual activation](#) or contact your service provider.

At this point your AirCard is ready to use.



5: Care and Maintenance of Your AirCard

As with any electronic device, the AirCard must be handled with care to ensure reliable operation. Follow these guidelines in using and storing the AirCard:

- Do not apply adhesive labels to the AirCard. This may cause the AirCard to become jammed inside the card slot.
- The AirCard should fit easily into your PC Card slot. Forcing the AirCard into a slot may damage connector pins.
- Protect the card from liquids, dust, and excessive heat.
- When not installed in your computer, store the AirCard in a safe place.

>> 6: Watcher Basics

- [Starting and Closing Watcher](#)
- [Components of the Watcher Window](#)
- [Interpreting Icons](#)
- [Online Help](#)
- [Troubleshooting](#)


Watcher is the application that allows you to manage and monitor the connection between the AirCard and the [CDMA](#) network. You use Watcher to:

- Determine your signal strength, [roaming](#) status, 3G high-speed data availability, and other network connection parameters
- Initiate data calls
- View call statistics
- Receive and send SMS messages
- Customize features and options

Depending on Watcher settings, you may be able to connect to the CDMA network without starting Watcher—simply by launching whatever application you want to use (such as your web browser or e-mail application). However, Watcher and its icon in the system tray won't be available for you to monitor the status of the connection.

Starting and closing Watcher

Depending on your settings in the Options window, Watcher launches automatically anytime you insert the AirCard. You can also launch Watcher by:

- Double-clicking the Watcher icon  on your desktop
- Selecting **Start > Programs > Sierra Wireless > AirCard 595 > AirCard 595 Watcher**

The standard Windows control buttons in the upper right corner of the window are used to minimize or close Watcher. When minimized, Watcher does not appear as a taskbar button. Instead, an icon is shown in the [system tray](#), usually at the right end of the taskbar. (See "[Minimized icons](#)" on page 26.)

Components of the Watcher window

The window has three areas that display messages and icons: the Connection Status Area (page 24), Call Status Area (page 25), and Indicator Area (page 25). These areas are shown in Figure 6-1 that follows.

A menu bar is located on the upper left side of the window.

Windows control buttons are in the top right corner.

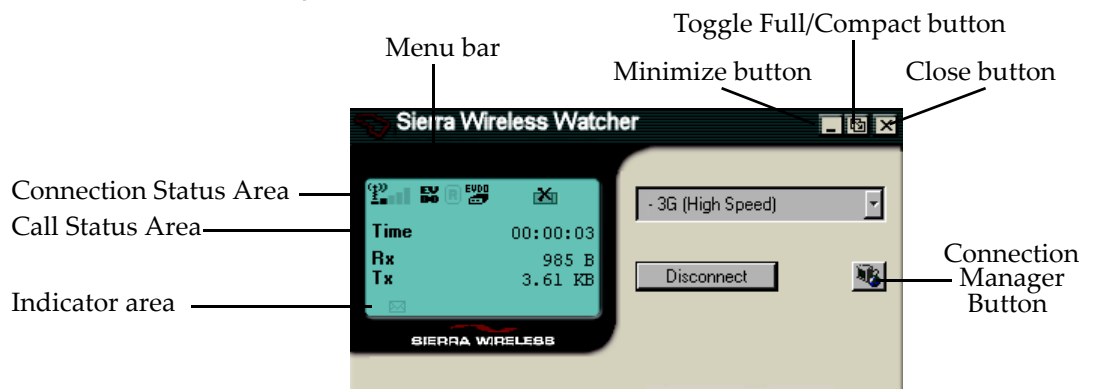



Figure 6-1: Watcher window

For a detailed description of each option in the menus, see the [online help](#).

Window controls

- The **Minimize** button closes the Watcher window but leaves the application running. When Watcher is minimized, you can use the Watcher icon in the [system tray](#) to determine the AirCard status. (See [page 26](#).) This icon replaces a taskbar button for Watcher.

Once minimized, you can redisplay the Watcher window by selecting the Watcher icon in the system tray. You can also restore the window by double-clicking the desktop shortcut or launching Watcher from the Start menu.

- The **Toggle Full/Compact** button  is used to switch between the full Watcher window and the compact view:



The compact view allows you to see connection status and indicators while using less space on the desktop.

To make data connections, disconnect, or access Watcher features, you must use full view. To return to full view, select the view toggle button in the top right.

- The **Close** button  is used to exit Watcher.

Docking

You can set the Watcher window to “jump” to the edge of your screen when you move the window close to an edge. This lets you easily position Watcher in a corner of the screen.

- Select **VIEW > Docking**

Always On Top

You can set Watcher to always display in front of other windows. This allows you to monitor connection status while using another maximized application, such as your web browser.

- Select **VIEW > Always On Top**

Interpreting icons

Watcher makes extensive use of icons to indicate status and events. The various icons are described in the following sections on the display areas of Watcher.

Connection Status Area







The Connection Status Area uses the icons shown in the following table.

Table 6-1: Connection Status Area icons

Icon	Meaning
	AirCard not detected (displayed in the left part of the Connection Status Area).
	The Signal Strength indicator (displayed in the left part of the Connection Status Area) uses bars to show the intensity of the radio signal. The number of bars increases as signal strength increases to a maximum of five bars.
	When the bars are dimmed and the antenna icon is crossed out, no connection is possible for one of these reasons: <ul style="list-style-type: none"> You are outside the CDMA network coverage area The signal strength is too weak A network or account problem is preventing the AirCard from obtaining service
[Icon TBD]	Indicates whether 1xEV-DO Rev. A is available in this area.
	Indicates whether 1xEV-DO Rev. 0 is available in this area.
	Indicates whether 1X is available in this area. (Not displayed if 1xEV-DO is available).
	The Roaming Status indicator shows whether you are roaming onto the network of a service provider other than your own. <p>When the indicator is off (gray), you are within the local coverage area of your service provider. When the indicator is on (solid black), you are in a "preferred" roaming area. When the indicator is blinking, you are within the coverage area of a CDMA network but not in a "preferred" roaming area.</p> <p>Your coverage area and account charges depend upon your service provider and the type of account you have. There may be surcharges for roaming service that vary based on whether you are in a preferred or non-preferred roaming area. If there is no roaming agreement between your service provider and the local carrier, you may be unable to complete calls.</p>
The In Use indicator shows whether a call is in progress. No icon is displayed when the AirCard is idle. Otherwise, one of these icons is displayed:	
TBD	A high-speed (1xEV-DO Rev. A) packet data call is in progress.
	A high-speed (1xEV-DO Rev. 0) packet data call is in progress.

Table 6-1: Connection Status Area icons (continued)

Icon	Meaning
	A high-speed (1X) packet data call is in progress.
	TBD A circuit switched data call is in progress.
	A high-speed (1X or 1xEV-DO) packet data connection is dormant ; the radio channel has been released allowing you to make and receive voice calls. You can resume data transmission without the need of re-establishing the connection. Some applications may not be able to function on a dormant connection.
	A fatal error has occurred and the AirCard is inoperable. Close Watcher and restart your PC.

Call Status Area

The Call Status Area displays messages related to the status or progress of a connection.


Where a duration timer is shown, timing begins when the call is initiated—not from the time the call is fully connected. This is a measure of the time the AirCard has been using the radio channel (a wireless network resource).

“Click this display to exit PowerSave mode” indicates that the AirCard could not find a system within a 15 minute interval. To conserve power, the AirCard reduces channel scanning to once every three minutes. To force the AirCard out of PowerSave mode, click in the Call Status Area. The AirCard performs a channel scan and, if no network is detected, returns to PowerSave mode.

Indicator area

The Indicator area displays an icon that notifies you when you receive SMS messages. The icon is black when “on” and gray when “off”.

Table 6-2: Indicator Area icons

Icon	Meaning
	The SMS message indicator shows whether you have unread messages. A blinking icon indicates that there are one or more urgent or important unread messages. To display the SMS Express window (in which the messages are displayed) select TOOLS > SMS Express... or double-click the icon.

Minimized icons

Watcher displays an icon in the Windows system tray (which is usually located in the lower right corner of your screen). The system tray icon indicates your connection status or notifies you when you have SMS messages.



Table 6-3: System tray icons

Icon	Meaning
	You are in service on the network but have no active data connection. The number of red bars indicates the signal strength.
	You have an active data connection. The number of green bars indicates the signal strength.
	You are not in service on the CDMA network.
	You have a new SMS message.

Only one icon can be displayed at a time. The priority of icons, from highest to lowest, is:

- SMS message(s)
- Active or inactive connection.

For example, if you have unread SMS messages, and then establish a data connection, the icon still displays as an unread SMS message.

Online Help

Watcher includes extensive online help to provide operating hints and step-by-step instructions for getting the most from your AirCard.

You can access online help in several ways:

- Press <F1> in any window.
- Click the **Hints** button available in many windows.
- Use Windows Explorer to navigate to **Program Files > Sierra Wireless > AirCard 595 > Generic > Watcher.chm**. Double-click to open the help file.

The help file has a table of contents, an index, and search capabilities.

Troubleshooting

The [online help](#) includes descriptions of most common error messages. Look in the table of contents under Troubleshooting.

For help with other problems:

- Consult the Sierra Wireless web site at www.sierrawireless.com, where you will find an extensive knowledge base that can be searched to address most problems.
- Contact your service provider.

7: Technical Specifications

- LED operation
- Radio frequency and electrical specifications
- Environmental specifications

This chapter describes the function of the [LED](#), and provides technical product data for the AirCard.

[Table updates TBD]

LED operation

The AirCard has a single red/green [LED](#) near the thick end of the card. The LED operates as follows:

Table 7-1: LED operation

LED Behavior	Indicates
Red blinking slowly	The AirCard is powering up, or no service is available.
Green blinking rapidly	An active data session is in progress.
Green blinking slowly	The AirCard has acquired a channel and is in idle mode (no active data session is in progress).
Solid red	An error has occurred.

Radio frequency and electrical specifications

Table 7-2: Radio frequency and electrical specifications

Approvals	Compliant with: IS-2000 Release 1.0 (CDMA (1X)) , IS-707-A Data , IS-856 (CDMA 1x-EVDO) , IS-866 , IS-878 , IS-890 , CDMA Developers Group FCC (ID: N7NAC595) Industry Canada
Voltage	+3.3 Vdc from PCMCIA Slot

Table 7-2: Radio frequency and electrical specifications (continued)

Current	Maximum: 950 mA Typical data call current (talk mode): 370 mA (1X) 470 mA (1xEV-DO) Standby: 110 mA (1xEV-DO/IS2000 hybrid mode)
Transmitter power	200 mW (+23 dBm)
Transmit	PCS: 1805 to 1870 MHz Cellular: 824 to 849 MHz
Receive	PCS: 1715 to 1780 MHz Cellular: 868 to 894 MHz
Channel spacing	1.25 MHz
Frequency stability	±150 Hz

Environmental specifications

Table 7-3: Environmental specifications

Operating temperature	-20 to +60°C (ambient, outside PCMCIA enclosure)
Storage temperature	-30 to +65°C
Humidity	95%, non-condensing
Vibration	15 g peak 10 to 2000 Hz (non-operating)
Drop	30" (76.2 cm) on to vinyl covered concrete

8: Regulatory Information

- Regulatory notices
- Information pertaining to OEM customers

Regulatory notices

This device is compliant with Parts 15 and 24 of the [FCC Rules](#). This PC Card has been tested with the typical laptop computer with the side loading PC Card slot. This PC card must not be co-located or operated in conjunction with any other antenna or transmitter. Use of this device in any other configuration may exceed the FCC RF Exposure compliance limit. Operation of this device is subject to the following two conditions:

1. This device may not cause harmful interference, and
2. This device must accept any interference received, including interference that may cause undesirable operations.

FCC guidelines stipulate that the antenna should be more than 1.7cm from the user.

The highest reported SAR values of the AirCard 595 by Sierra Wireless are:

1. Separation distance of at least 1.7 cm needs to be maintained to users lap with AirCard 595 inserted into the bottom PC Card slot of the laptop computer (1.345 mW/g)

FCC ID: [DVN Is this value correct?] N7NAC595

CAUTION Unauthorized modifications or changes not expressly approved by Sierra Wireless could void compliance with regulatory rules and thereby your authority to use this equipment.

WARNING (EMI) - United States FCC Information - This equipment has been tested and found to comply with the limits pursuant to Part 15 & 24 of the FCC Rules. These limits are designed to provide reasonable protection against harmful interference in an appropriate installation.

This equipment generates, uses, and can radiate radio frequency energy and, if not installed and used in accordance with the instructions, may cause harmful interference to radio communication. However, there is no guarantee that interference will not occur in a particular installation. If this equipment does cause harmful interference to radio or

television reception, which can be determined by turning the equipment off and on, the user is encouraged to try to correct the interference by one or more of the following measures:

- Reorient or relocate the receiving antenna
- Increase the separation between the equipment and receiver
- Connect the equipment into an outlet on a circuit different from that to which the receiver is connected
- Consult the dealer or an experienced radio/TV technician for help

WARNING (EMI) - Canada - This digital apparatus does not exceed the Class B limits for radio noise emissions from digital apparatus as set out in the interference causing equipment standard entitled "Digital Apparatus", ICES-003 of the Department of Communications.

Cet appareil numérique respecte les limites de bruits radioélectriques applicables aux appareils numériques de Classe B prescrites dans la norme sur le matériel brouilleur: "Appareils Numériques", NMB-003 édictée par le ministre des Communications.

If you have purchased this product under a United States Government contract, it shall be subject to restrictions as set forth in subparagraph (c)(1)(ii) of Defense Federal Acquisitions Regulations (DFARs) Section 252.227-7013 for Department of Defense contracts, and as set forth in Federal Acquisitions Regulations (FARs) Section 52.227-19 for civilian agency contracts or any successor regulations. If further government regulations apply, it is your responsibility to ensure compliance with such regulations.

Information pertaining to OEM customers

The AirCard 595 wireless WAN adapter has been granted modular approval for mobile applications. Integrators may use the AirCard 595 card in their final products without additional FCC / IC certification if they meet the following conditions. Otherwise, additional FCC / IC approvals must be obtained.

1. At least 20 cm separation distance between the antenna and the user's body must be maintained at all times.
2. To comply with FCC / IC regulations limiting both maximum RF output power and human exposure to RF radiation, the maximum antenna gain must not exceed 5.65 dBi in the Cellular band and 4.35 dBi in the PCS band.

3. The AirCard 595 card and its antenna must not be colocated with any other transmitter or antenna within a host device.
4. A label must be affixed to the outside of the end product into which the AirCard 595 is embedded, with a statement similar to the following:
This device contains TX FCC ID: N7NAC595.
This equipment contains equipment certified under IC: 2417C-AC595.[DVN Is this value correct?]
5. A user manual with the end product must clearly indicate the operating requirements and conditions that must be observed to ensure compliance with current FCC / IC RF exposure guidelines.

The end product with an embedded AirCard 595 card must pass the unintentional emission testing and properly authorized per FCC Part 15 requirements.

Note: If this PC Card is intended for use in a portable device, you are responsible for separate approval to satisfy the SAR requirements of FCC Part 2.1093 and IC RSS-102.

Appendix A: Glossary

A

1X	One Times Radio Transmission Technology (the "one times" refers to the frequency spectrum). Supports Internet connections with data rates up to 153 Kbps (downlink from the network) and 76.8 Kbps (uplink to the network). Actual speed depends on the network conditions. Compare to 1x-EVDO .
1x-EVDO	A high-speed standard for cellular packet data communications. Rev. A supports Internet connections with data rates up to 3.1 Mbps (downlink from the network) and 1.8 Mbps (uplink to the network). Rev. 0 supports Internet connections with data rates up to 2.4 Mbps (downlink from the network) and 153 Kbps (uplink to the network). Average data rates are roughly: for Rev. A: [TBD] Mbps (downlink from the network) and [TBD] Kbps (uplink to the network); for Rev. 0: 400-700 Kbps (downlink from the network) and 40-60 Kbps (uplink to the network). Actual speed depends on the network conditions. Compare to 1X .
bps	bits per second —The actual data speed over the transmission medium.
CDMA	Code Division Multiple Access —A wideband spread spectrum technique used in digital cellular, personal communications services, and other wireless networks. Wide channels (1.25 MHz) are obtained through spread spectrum transmissions, thus allowing many active users to share the same channel. Each user is assigned a unique digital code, which differentiates the individual conversations on the same channel.
CDMA 1X	Also known as 1X , this is a high-speed standard for CDMA cellular communications.
circuit switched cellular	V.xx modem communications over a cellular network. It uses a dedicated connection circuit, in contrast to packet -switched. The user is charged by the carrier for the duration of the connection.
dormant	The packet data connection has the logical PPP session left open while the underlying physical link (the radio channel) is released. When traffic is to resume, a radio channel is re-acquired and the original PPP session resumes.
ESN	Electronic Serial Number —The unique first-generation serial number assigned to the AirCard for cellular network use. Compare to MEID .

FCC	Federal Communications Commission —The U.S. federal agency that is responsible for interstate and foreign communications. The FCC regulates commercial and private radio spectrum management, sets rates for communications services, determines standards for equipment, and controls broadcast licensing. Consult www.fcc.gov .
firmware	Software stored in ROM or EEPROM; essential programs that remain even when the system is turned off. Firmware is easier to change than hardware but more permanent than software stored on disk.
host	<p>6. A computer that uses a modem or a similar device to answer a calling computer.</p> <p>7. A source or destination in the communication network.</p> <p>8. A computer that contains data or files to be accessed by client computers. Also known as a server.</p>
IS	Interim Standard —After receiving industry consensus, the TIA forwards the standard to ANSI for approval.
IS-95	The standard for CDMA .
Kbps	Kilobits per second —Actually 1000, not 1024, as used in computer memory size measurements of kilobytes.
LAN	Local Area Network
LED	Light Emitting Diode —A semiconductor diode that emits visible or infrared light.
MEID	Mobile Equipment Identifier —The unique second-generation serial number assigned to the AirCard for cellular network use. Compare to ESN .
MHz	Mega-Hertz —One million cycles per second.
Mbps	Megabits per second
packet	A short fixed-length block of data including a header that is transmitted as a unit in a communications network.
PC Card™	Add-in memory and communications cards for portable computers. PC Card is a trademark of the PCMCIA .
PCMCIA	Personal Computer Memory Card International Association —The organization that standardizes PC Cards.
PCS	Personal Communications Services —A cellular communication infrastructure that uses a different frequency range than AMPS.
QNC	Quick Net Connect —A CDMA connection method that reduces call setup time for circuit switched connections to the Internet.

- roaming** A cellular subscriber is in an area where service is obtained from a cellular service provider that is not the subscriber's provider.
- SMS** **Short message services**—A feature that allows users of a wireless device on a wireless network to receive or transmit short electronic alphanumeric messages (up to 160 characters, depending on the service provider).
- system tray** Usually located in the lower right corner of your screen
- TIA** **Telecommunications Industry Association**—A standards setting trade organization, whose members provide communications and information technology products, systems, distribution services and professional services in the United States and around the world. Consult www.tiaonline.org.
- VPN** Virtual Private Network

Index

Numerics

- 1X
 - description, 8
 - indicator, 24
- 1xEV-DO
 - description, 8
 - indicator, 24
- 3G
 - description, 8
 - indicator (1xEV-DO and 1X), 24

A

- account
 - activation, 12
 - configuration, 17
- activation
 - overview, 12
 - automated, 18
 - manual, 18
- Activation Wizard, 17
- adapter, wireless WAN, 8
- always on top, 23
- antenna
 - guidelines for use, 30
- automated activation, 18

B

- bands, frequency, 10

C

- call status area, 25
- care and maintenance, 20
- CDMA 1X
 - description, 8
 - indicator, 24
- CDMA 1xEV-DO
 - description, 8
 - indicator, 24
- CDMA network
 - 3G services, 8
 - frequency bands, 10
 - service providers, 10
- circuit switched data
 - description, 8
 - call indicator, 25
- close button, 23
- compact view, 22

- connection status
 - indicator, 26
- connection status area, 24
- coverage, 11
- CSD
 - description, 8
 - indicator, 25

D

- data
 - circuit switched - call indicator, 25
 - circuit switched - description, 8
 - dial-up - call indicator, 25
 - dial-up - description, 8
 - high-speed, 8
 - QNC, 8
- dial-up data
 - description, 8
 - call indicator, 25
- disk space required, 14
- docking, 23
- dormant, 25
- drivers
 - description, 10

E

- EMI warning, 30
- ESN, 13
- EVDO
 - description, 8
 - indicator, 24

F

- FCC
 - ID, 30
- FCC compliance, 30
- frequency bands, CDMA network, 10
- full view
 - description, 22
 - toggle button, 22

H

- hardware
 - inserting, 16
 - removing, 16
- help, 26
- high-speed packet data, 8

I

I/O space (input/output space), 14
icons
 connection status, 24
 indicator area, 25
 minimized, 26
 system tray, 26
 see also indicators
ID, FCC, 30
in use indicator, 24
indicator area, 25
indicators
 1X, 24
 1xEV-DO, 24
 circuit-switched data call, 25
 connection status, 26
 SMS messages, 25, 26
inserting the AirCard, 16
installation
 hardware, 16
 software, 14–16
interference, 31
Internet, 8
IRQ (interrupt request), 14

M

MEID, 13
memory required, 14
minimize button, 22
minimized icons, 26
Mobile Equipment Identifier, 13

N

not in service indicator, 26
notices, regulatory, 30

O

OEM customers, 31
online Help, 26
operating hints, 26
operating systems supported, 14
OS supported, 14

P

packet data, high-speed, 8
PowerSave, 25
pre-activation, 12

Q

QNC, 8
Quick Net Connect (QNC), 8

R

regulatory information, 30
removing the AirCard, 16
requirements, system, 14
roaming
 definition, 11
 indicator, 24

S

SAR, 30
service indicator, 26
signal strength
 indicator - CDMA network, 24
SMS message indicator, 25, 26
software
 overview, 10
 installation, 14–16
status area
 call status area, 25
 connection status area, 24
 indicator area, 25
 Windows system tray, 26
support, 27
system requirements, 14
system tray icons, 26

T

taskbar icons, 26
tips, operating, 26
troubleshooting, 27

V

virtual private network, 7
VPN, 7

W

WAN adapter, 8
warning
 EMI, 30
Windows system tray icons, 26
Windows, versions supported, 14
wireless WAN adapter, 8

