

ELECOM

Bluetooth Ver.3.0 class2
Noise cancelling headset
LBT-HS600 Series

User's Manual

V1

This user's manual explains the methods for the proper and safe usage of this Bluetooth headset. Use this product after carefully reading and understanding the contents of this manual. Store this document safely in a place where it can be accessed whenever it is needed.

Package Contents

The following are included in the package for this product: Confirm package contents before using.

- Headset _____ 1 unit
- Ear pads (S/M/L sizes) *M is on the unit when shipped. _____ One of each (3 sizes)
- Ear hooks (S/L) * S is attached to the device in the package _____ 1 of each
- USB charging cable _____ 1 piece
- User's Manual _____ This document

Important Notice

! The included USB charging cable is meant for use with this product ONLY. Do not use this cable for any purpose other than charging this product. Even if the connector type is the same, the pin configuration may differ and cause a malfunction. Similarly, do not use the charging cable included with another product to charge this product.

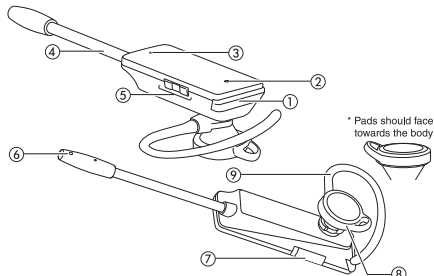
Necessary information when connecting:

- Product device name when detected in a search from a mobile device: **LBT-HS600**
- Link Key: **0000 (Four zeros)**

* If connecting to a device which uses Bluetooth 2.1 or later, it may not be necessary to enter a link key.

Part Names

- ① Multi-function button ② LED lamp ③ Sub-mic ④ Rod ⑤ Volume button (+/-)
- ⑥ Microphone ⑦ Charging connector ⑧ Ear pad ⑨ Ear hook



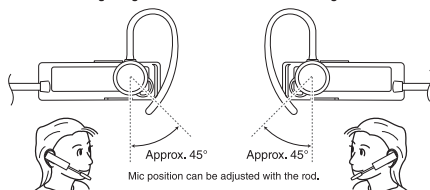
* Pads should face towards the body

Change the way you put them on your ears

With the ear hook rotated to a desired position, you can adjust where to place them, or orient them oppositely to attach them to the left and right ears. Additionally, using the angle in the diagram below as a guide, you can adjust the ear pads to the best angle for attaching.

Attaching to right ear

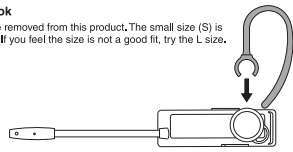
Attaching to left ear



Mic position can be adjusted with the rod.

How to put on the ear hook

The included ear hook can be removed from this product. The small size (S) is attached at time of purchase. If you feel the size is not a good fit, try the L size.



How to use this product.

Before using

This product must be charged before use. Use the included USB cable to charge.

About charging

Using the USB Cable: Approx. 2 hours *

- !** When charging is completed and the LED turns OFF, disconnect the charging cable. For safety reasons, it is recommended to avoid passing an electric current after charging. Also, do not use the product while it is charging.
- * The charging time varies depending on how much power is output from the USB port.

1 Connect the charging cable to this product.

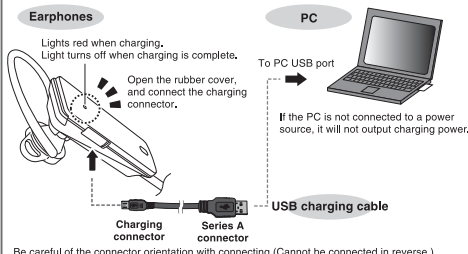
Connect the charging connector of the included USB charging cable to the charging connector of this product.

2 Connect the USB charging cable to the PC.

Connect the series A connector of the USB cable to the USB ports of your PC, etc. * If the PC is not connected to a power source, it will not output charging power.

3 When charging is completed the LED lamp turns off.

[Charging connection]



Be careful of the connector orientation with connecting (Cannot be connected in reverse).

How to perform pairing (initial registration of this product in the connection device)

You must perform a pairing operation (initial registration of this product in your device) to use this product with your mobile phone or smart phone. For information about pairing from your device, please refer to the manual of your mobile phone or smart phone.

- Up to 8 pairing devices can be stored in memory. If more than 8 devices are stored, the oldest device in memory will be erased. If reconnecting to a device which was erased from the memory, pairing must be performed again.
- If pairing cannot be completed due to problems such as a setting on the connection device, turn off the power once, and try again.
- This product conforms to Bluetooth 3.0 standards. Depending on the (Bluetooth 2.1) device, registration may complete without having to enter a link key.

1 Enter the headset into pairing mode.

With the power of this product turned OFF, press and hold the multi-function button for 6 seconds or more, until the LED lamp begins blinking red and blue. When the LED lamp begins alternately blinking red and blue, the device has entered pairing mode.

- If you connect to an unintended device, turn off the power of that device and try again.
- If any devices which have already been paired are nearby, you can take your finger off of the button as soon as the LED lamp turns off. If the automatic reconnection settings of the device are enabled, it will automatically reconnect.
- Depending on the device with which you want to perform pairing, it may be necessary to give connection permission to [LBT-HS600] from the connecting device in advance.

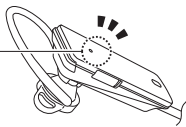
2 Searching for the headset from the connection device

Perform a search for this product from the pairing device (mobile phone, PC, etc.). Search method varies depending on the device you are using. For information about searching from your device, please refer to the manual of your device.

3 Register the headset with the device with which you want to perform pairing.

When this product is detected from another device, it displays as [LBT-HS600]. Please select and register this item. When pairing is complete the LED lamp will blink in a loose pattern (approx. once every 3 sec.).

- Blinks alternately red/blue (pairing).
- ↓
- Slowly blinks blue (pairing completed)



- If a message appears prompting you to enter a link key, enter "0000" (four zeros). Depending on the (Bluetooth 2.1) device, registration may complete without having to enter a link key.
- Depending on the device, it may be necessary to perform a [Connection] procedure after pairing is completed. Please refer to the manual of your mobile device for information, and perform a [Connection] procedure if necessary.

When setting multi-point functions...

Multi-point functionality allows this product to go into standby with 2 different mobile phones. This is especially convenient when using both a company and personal mobile phone at the same time.

- !** This function can only be used with two mobile phones. It cannot be used simultaneously with a PC or game device.
- This product is not guaranteed to be able to be paired with all Bluetooth mobile phones and smartphones.
- Multi-point does not allow for simultaneous 3-way voice conversation.

Instructions for multi-point pairing

1 Perform a pairing operation with the first mobile phone

1. Follow the instructions in "How to perform pairing (initial registration of this product in the connection device)" in this document to perform pairing with the first mobile phone.
2. When pairing is complete, turn OFF the Bluetooth on the mobile phone.
* When the Bluetooth of the mobile phone does not turn OFF, turn OFF the power of the mobile phone.

2 Next, perform pairing with the 2nd mobile phone

1. Perform pairing with the 2nd mobile phone in exactly the same way as you performed it with the 1st mobile phone.
2. When pairing is complete, turn OFF the power of this product.
* Continue performing the following instructions WITHOUT turning off the power of the 2nd mobile phone.

3 Standby the 2nd mobile phone

1. Confirm that the Bluetooth of the 2nd paired mobile phone is ON.
2. Turn ON the Bluetooth of the 1st paired mobile phone.
3. Turn ON this product.
4. Confirm which of the two mobile phones is displaying a Bluetooth connection icon.

How to talk when receiving a call

When in a call, press the multi-function button on this product to switch to talking using the mobile phone. At this time, the connection to the 2nd connected mobile phone is put on hold, and the following operations are possible depending on the situation:

- If you receive an incoming call on one phone at the same time as the other (both phones ring):
→ The phone which rings last cannot be operated from the headset.
- If you receive a call on one mobile phone while talking on the other:
→ You will hear an incoming call ringing in the earphone.
● Press the multi-function button twice in succession to switch to the conversation on the 2nd connected mobile phone, while putting the conversation on the 1st connected mobile phone on hold.
● If you press the multi-function button twice in succession, the current call is put on hold, and the previous on-hold call on the other mobile phone begins. If the other party ends the call, it returns to the call on hold on the other mobile phone. When the calls are completed, both mobile phones return to standby mode.
● Depending on the model of mobile phone being used, it may not be possible to end the call using this product. If the other party ends the call, make sure to end the call on your mobile phone as well.

About outgoing calls (including redial)

When you press the multi-function button twice, it will redial the last number in call history from whichever of the connected devices. However, you cannot choose which of the connected devices to redial from. To do that, redial by operating directly from the mobile phone when using multi-point pairing.
If the smartphone or mobile phone is locked, it may not be possible to perform a redial.

Basic Operation

Power ON/OFF

Turn power ON

With the power off, press and hold the multi-function button on this product for approx. 3 seconds. The LED lamp blinks blue 3 times and the product powers ON. The headset will automatically connect to any devices in range on which pairing has already been performed. When connection is completed, the LED lamp will change to blink in a loose pattern, and the device is now ready to use.

* You may need to approve or authenticate the headset connection (device name LBT-HS600) or perform a [Connection] procedure from the mobile device.

Turn power OFF

When the power is ON, press and hold the multi-function button on this device for approx. 3 seconds. The LED lamp blinks red then turns off, and the product turns OFF.

Making a call on a mobile phone, etc.

- !** Depending on the device specifications, your mobile phone may behave in a different manner than described in relation to the operation of this product.

Receiving a call

If you hear an incoming call ringing in the headset, press the multi-function button once.
* Depending on the device specifications, you may not be able to set ringtones to play on the Bluetooth headset.

Hanging up the call

When in conversation, press the multi-function button once.

Redialling (Most recent number)

Press the multi-function button twice.
* You cannot redial a received call.

Placing a call

To place an arbitrary call, after dialling the recipient number switch the sound output setting.

iPhone 4: After placing call, select [LBT-HS600] as the sound output device.

Android: After placing a call, press the [Bluetooth] button on the screen.

* For information on switching the sound output on your mobile device, please refer to the manual of that device.

Adjusting the volume

Perform using the volume button on this product. If you cannot achieve the desired level of volume using the volume button on this product even when it is at maximum, adjust the volume on the paired device.

About noise cancellation

LBT-HS600 maintains the noise cancellation functionality used by dual mic. Whether in the street, your car, or any noisy environment, your voice is filtered out from the surrounding ambient noise and delivered clearly to the other party.* Approx. 94% noise cancellation compared to our conventional products.

* There is no guarantee that all noise will be cancelled.

* Values obtained by measuring transmitted audible white noise from a set white noise environment of 80dB. Results are in comparison to our conventional models.

Primary operations

	Multi-function button operation	LED lamp status
Power ON	Press and hold power OFF for approx. 3 seconds.	Off -> Blinks blue 3 times
Power OFF	Press and hold power ON for approx. 3 seconds.	Blinks red -> Off
Charging	-	Lights red
Charging complete	-	Light is off
Not enough charge in battery	-	Blinks red once every two seconds
Pairing mode	When power is OFF, press and hold for 6 seconds or longer.	Blinking alternately Red <-> Blue
Pairing completed	Blinks blue at a slow rate	-
Receiving/ending a call	When in a call, press once during conversation.	-
Redial	Press two times quickly.	-
Switch over voice control (Mobile phone <-> Headset)	During conversation, press and hold for approx. 1 second until you hear a beep (remove your finger when you hear a beep)	-
Switch between which phone to call from (when using multi-point connection)	When in a call or switching, press twice rapidly.	-

Basic Specifications

Article No.	LBT-HS600 series		
Bluetooth Specifications	Bluetooth V3.0		
Carrier Signal	2,402 - 2,480 GHz		
Frequency diffusion method	FHSS (Frequency Hopping Spread Spectrum)		
Transmit range	Class 2 Max. radius 10 m (if unobstructed)*		
Supported Profiles	HFP (Headset-Free Profile), HSP (Headset Profile).		
Max. no. of pairing devices	8		
Continuous standby time	Max. 120 hours **		
Continuous conversation time	Approx. 4 hours **		
Charging time	Max. 3 hours		
Environment conditions	When operating	Temperature	0 - 35°C
	When storing	Temperature	-10 - +50°C
		Relative humidity	20 - 80% (no condensation)
		Relative humidity	10 - 80% (no condensation)
External dimensions (W x H x D)	17 x 10.5 x 125 mm (Excl. protrusions and ear hook)		
Weight	Approx. 12 g		

* Theoretical value. Transmit range is also affected by the Bluetooth capability of the target device and the conditions of the surrounding environment.
** When there is a long distance between this unit and Bluetooth device, the power consumption for each will increase resulting in shorter available time.

- !** Due to interference, it may sometimes not be possible to use in combination with a 2.4 GHz band wireless LAN (IEEE802.11g/b/n).
- It is not guaranteed that all Bluetooth devices will work with this product.