

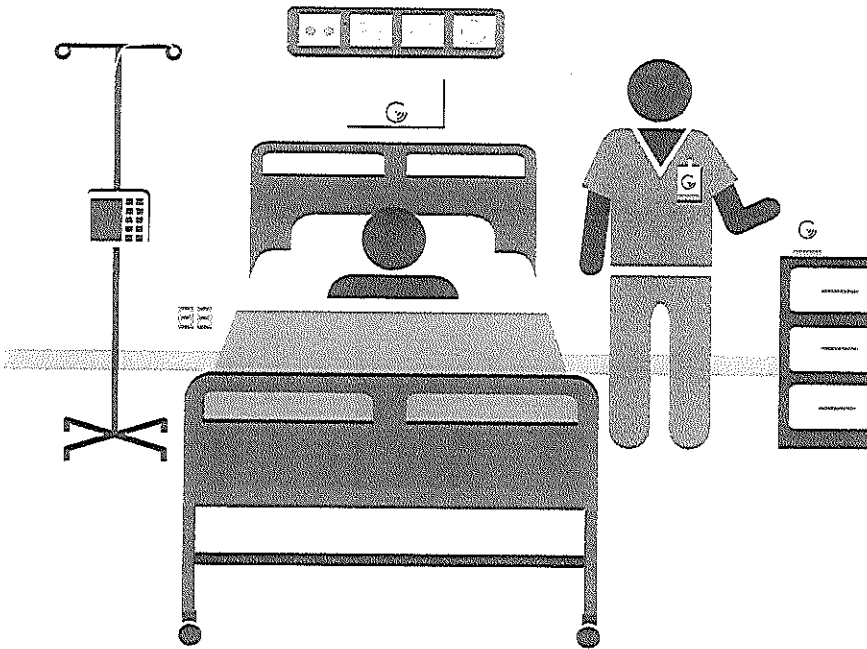
Setting Up the MedSense Beacon

Step 1: Registering Devices

Log into MedSense HQ and follow prompts to register each component of the MedSense system. You will need the serial number found on each device in order to complete the registration process.

Step 2: Installing and Calibrating a Beacon

- Locate the Beacon on the wall behind the patient's bed along the centerline of the bed. Keep a clear line of sight between the Beacon and the Badges.



- Install brackets at heights between 1.5 and 2.5 meters, using either the screws or adhesive provided.
- Supply power to the Beacon using only the provided power supplies, either by plugging into the wall or using batteries.
- Certain patient rooms will require more than one Beacon and placement will vary depending on room layout.

Using the MedSense Beacon

MedSense Beacon

POWER

When the Beacon is fully charged and working properly, you will see a blue blinking light. If it is battery powered, batteries will last approximately six months. A blinking red light means low power and maintenance is needed promptly.

To change the batteries, remove the Beacon from the wall and unscrew the battery door. Replace the batteries with six AA batteries, either Alkaline or rechargeable.

CARE INSTRUCTIONS

To clean the Beacon, wipe down in place with a cloth.

Legal Statements

FCC Statement

This equipment has been tested and found to comply with the limits for a Class B digital device, pursuant to part 15 of the FCC rules. These limits are designed to provide reasonable protection against harmful interference in a residential installation. This equipment generates, uses, and can radiate radio frequency energy and, if not installed and used in accordance with the instructions, may cause harmful interference to radio communications. However, there is no guarantee that interference will not occur in a particular installation.

If this equipment does cause harmful interference to radio or television reception, which can be determined by turning the equipment off and on, the user is encouraged to try to correct the interference by one or more of the following measures:

- Reorient or relocate the receiving antenna.
- Increase the separation between the equipment and receiver.
- Connect the equipment into an outlet on a circuit different from that to which the receiver is connected.
- Consult the dealer or an experienced radio/TV technician for help.

To assure continued compliance, any changes or modifications not expressly approved by the party responsible for compliance could void the user's authority to operate this equipment.

Radiation Exposure Statement

This equipment complies with FCC radiation exposure limits set forth for an uncontrolled environment and it also complies with Part 15 of FCC RF Rules. Operation is subject to the following two conditions:

- This device may not cause interference, and
 - This device must accept any interference, including interference that may cause undesired operation of the device.
-

Caution!

The manufacturer is not responsible for any radio or TV interference caused by unauthorized modifications to this equipment. Such modifications could void the user authority to operate the equipment.

Canada Statement

- This device complies with Industry Canada RSS-210. Operation is subject to the following two conditions: (1) this device may not cause interference, and (2) this device must accept any interference, including interference that may cause undesired operation of the device.
- Le présent appareil est conforme aux CNR d'Industrie Canada applicables aux appareils radio RSS-210. L'exploitation est autorisée aux deux conditions suivantes : (1) l'appareil ne doit pas produire de brouillage, et (2) l'utilisateur de l'appareil doit accepter tout brouillage radioélectrique subi, même si le brouillage est susceptible d'en compromettre le fonctionnement.
- The device meets the exemption from the routine evaluation limits in section 2.5 of RSS 102 and compliance with RSS-102 RF exposure, users can obtain Canadian information on RF exposure and compliance.
- Le dispositif rencontre l'exemption des limites courantes d'évaluation dans la section 2.5 de RSS 102 et la conformité à l'exposition de RSS-102 rf, utilisateurs peut obtenir l'information canadienne sur l'exposition et la conformité de rf.

- This transmitter must not be co-located or operating in conjunction with any other antenna or transmitter. This equipment should be installed and operated with a minimum distance of 20 centimeters between the radiator and your body.
- Cet émetteur ne doit pas être Co-placé ou ne fonctionnant en même temps qu'aucune autre antenne ou émetteur. Cet équipement devrait être installé et actionné avec une distance minimum de 20 centimètres entre le radiateur et votre corps.