



## Programming and Information Guide

HomeLink provides a convenient way to replace up to three hand-held radio-frequency (RF) transmitters used to activate devices such as gate operators, garage door openers, entry door locks, security systems, and interior and exterior lighting. Additional HomeLink information can be found at [www.HomeLink.com](http://www.HomeLink.com), [www.youtube.com/HomeLinkGentex](http://www.youtube.com/HomeLinkGentex), or by calling the toll-free help line at 1-800-355-3515.

### **Before Programming HomeLink**

During programming, it is possible that garage doors, gates, or other devices may operate. For this reason, make sure that people and objects are clear of the garage door or other devices to prevent injury or other potential harm.

Do not use HomeLink with any garage door opener that lacks safety stop and reverse features as required by U.S. federal safety standards (this includes any garage door opener model manufactured before April 1, 1982). A garage door that cannot detect an object - signaling the door to stop and reverse - does not meet current U.S. federal safety standards.

It is recommended that a new battery be placed in the remote control transmitter for more accurate programming.

Garage door opener motors manufactured after 1995 may be equipped with rolling code protection. If this is the case, you may need a stepladder or other sturdy, safe device to reach the "Learn" or "Smart" button on the garage door motor.

Retain the original transmitter of the RF device you are programming for use in other vehicles as well as for future HomeLink programming.

It is suggested that upon the sale or lease termination of the vehicle, the programmed HomeLink buttons be erased for security purposes. Refer to "*Erasing HomeLink Buttons*" later in these instructions.

You can program a maximum of three devices. To change or replace any of the three devices after it has been initially programmed, you must first erase the current settings. See '*Erasing HomeLink Buttons*' or '*Reprogramming a Single HomeLink Button*' later in these instructions.

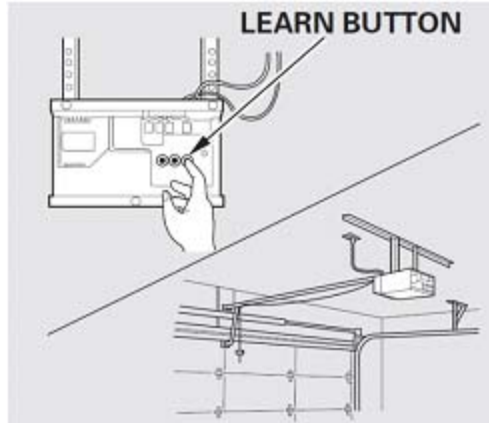
Please note that the instructions below apply to the majority of HomeLink use cases. However, there are some HomeLink applications or HomeLink compatible systems that require slightly different instructions.

## Programming a new HomeLink

1. With your vehicle parked outside of the garage turn your ignition to the on position (you do not have to start your vehicle).
2. Press the HomeLink button that you would like to program. The indicator light will blink orange slowly (if not, refer to “*Erasing HomeLink Buttons*” later in these instructions). You do not need to hold the HomeLink button.
3. Position the end of your hand-held transmitter 1–3 inches (2–8 cm) away from the HomeLink button while keeping the indicator light in view.
4. Press and hold the button of the hand-held transmitter you desire to program while watching the indicator light on HomeLink. Continue pressing the button until the HomeLink indicator light changes from slowly blinking orange to either rapidly blinking green (rolling code) or constant green (fixed code). Now you may release both the HomeLink and hand-held transmitter buttons.

**Note:** Some devices may require you to replace this Programming Step 2 with procedures noted in the **Gate Operator / Canadian Programming** section. If the HomeLink indicator light does not change to a rapidly blinking green light after performing these steps, contact HomeLink at [www.HomeLink.com](http://www.HomeLink.com).

5. Firmly **press, hold for five seconds and release** the programmed HomeLink button up to two separate times to activate the door. If the door does not activate, press and hold the just-trained HomeLink button and observe the indicator light.
  - If the indicator light **stays on constantly green**, programming is complete and your device should activate when the HomeLink button is pressed and released.
  - If the indicator light **rapidly blinks green**, firmly **press, hold for two seconds and release** the programmed HomeLink button. Repeat the "press/hold/release" sequence a second time, and, depending on the brand of the garage door opener (or other rolling code equipped device), repeat this sequence a third time to complete the programming process.
  - **If the garage door does not operate, continue with “Programming” steps 6-8** to complete the programming of a rolling code equipped device (most commonly a garage door opener).
6. At the garage door opener receiver (motor-head unit) in the garage, locate the “Learn” or “Smart” Button. This can *usually* be found where the hanging antenna wire is attached to the motor-head unit (see the Garage Door Opener manual to identify the “Learn Button”).



**Figure 1: Approximate Learn Button Location**

7. Firmly press and release the “learn” or “smart” button. (The name and color of the button may vary by manufacturer.) There are typically 30 seconds to initiate step 6.
8. Return to the vehicle and firmly **press, hold for two seconds and release** the programmed HomeLink button. Repeat the “**press/hold/release**” sequence a second time, and, depending on the brand of the garage door opener (or other rolling code equipped device), repeat this sequence a third time to complete the programming process.

HomeLink should now activate your rolling code equipped device.

In the event that there are still programming difficulties or questions, additional HomeLink information and programming videos can be found online at [www.HomeLink.com](http://www.HomeLink.com), [youtube.com/HomeLinkGentex](http://youtube.com/HomeLinkGentex) or by calling the toll-free help line at 1-800-355-3515.

### **Gate Operator / Canadian Programming**

Canadian radio-frequency laws require transmitter signals to “time-out” (or quit) after several seconds of transmission – which may not be long enough for HomeLink to pick up the signal during programming. Similar to this Canadian law, some U.S. gate operators are designed to “time-out” in the same manner.

If you live in Canada **or** you are having difficulties programming a gate operator or garage door opener by using the “Programming” procedures, **replace “Programming HomeLink” step 2** with the following:

**Note:** If programming a garage door opener or gate operator, it is advised to unplug the device during the “cycling” process to prevent possible overheating.

2. Continue to press and hold the HomeLink button while you **press and release - every two seconds** (“cycle”) your hand-held transmitter until the HomeLink indicator light changes from slowly blinking orange to either rapidly blinking green

(rolling code) or constant green (fixed code). Now you may release both the HomeLink and hand-held transmitter buttons.

Proceed with “Programming” step 3 to complete.

## Using HomeLink

To operate, simply press and release the programmed HomeLink button. Activation will now occur for the trained device (i.e. garage door opener, gate operator, security system, entry door lock, home/office lighting, etc.). For convenience, the hand-held transmitter of the device may also be used at any time.

## Erasing HomeLink Buttons

To erase programming from the three buttons (individual buttons cannot be erased but can be “reprogrammed” as outlined below), follow the steps noted:

1. Press and hold the two outer HomeLink buttons for at least 10 seconds. The indicator light will change from continuous orange to rapidly flashing green.
2. Release both buttons.  
**Note:** Do not hold for longer than 20 seconds.
3. HomeLink is now in the train (or learning) mode and can be programmed at any time beginning with “Programming” - step 1.

## Reprogramming a Single HomeLink Button

To program a device to HomeLink using a HomeLink button previously trained, follow these steps:

1. Press and hold the desired HomeLink button. **DO NOT** release the button.
2. The indicator light will begin to slowly flash orange after 20 seconds. Without releasing the HomeLink button, proceed with “Programming” - step 1
3. If you do not complete the programming of a new device to the button, it will revert to the previously stored programming.

For questions or comments, visit [www.HomeLink.com](http://www.HomeLink.com), [youtube.com/HomeLinkGentex](https://www.youtube.com/HomeLinkGentex) or by calling the toll-free help line at 1-800-355-3515.

The device is to be mounted in the vehicle with only the button side of the device exposed to the end user.

*The following is required text to be included in the Vehicle Owner's Manual, as part of Homologation regulations.*

*\*A general requirement is that the Owner's Manual shall be written in the native language of the country of use.*

### **FCC (USA) and IC (Canada):**

This device complies with FCC rules part 15 and Industry Canada RSS-210. Operation is subject to the following two conditions: (1) This device may not cause harmful interference, and (2) This device must accept any interference that may be received including interference that may cause undesired operation. WARNING: The transmitter has been tested and complies with FCC and IC rules. Changes or modifications not expressly approved by the party responsible for compliance could void the user's authority to operate the device.

This equipment complies with FCC radiation exposure limits set forth for an uncontrolled environment. End Users must follow the specific operating instructions for satisfying RF exposure compliance. This transmitter must be at least 20 cm from the user and must not be co-located or operating in conjunction with any other antenna or transmitter.

The term "IC:" before the certification/registration number only signifies that Industry Canada technical specifications were met.

<b>Version</b>	<b>Date</b>	<b>Description</b>	<b>Who</b>
Draft	4/25/14	Initial Release	TDK
Draft	4/30/14	Edits from Gentex/HomeLink Marketing	Josh O'Berski
1.0	8/26/14	Edits to commonize with Gentex/HomeLink Marketing core document	Tom Klaver