



## Programming and Information Guide

The HomeLink® Wireless Control System provides a convenient way to replace up to three hand-held radio-frequency (RF) transmitters used to activate devices such as gate operators, garage door openers, entry door locks, security systems, and even home lighting. **For compatible products and video programming instructions, please visit [www.HomeLink.com](http://www.HomeLink.com), [www.youtube.com/HomeLinkGentex](http://www.youtube.com/HomeLinkGentex), or call the toll-free (US Only) helpline at 1-800-355-3515).**



### Before Programming HomeLink

- ⚠ Do not use HomeLink with any garage door opener that lacks safety stop and reverse features as required by U.S. federal safety standards (this includes any garage door opener model manufactured before April 1, 1982). A garage door that cannot detect an object - signaling the door to stop and reverse - does not meet current U.S. federal safety standards.
- ⚠ Before programming HomeLink to a garage door opener or gate operator, make sure that people and objects are out of the way of the device to prevent potential harm or damage. When programming a garage door opener, it is advised to park outside of the garage.

### Notes

Garage door opener motors manufactured after 1995 may be equipped with rolling code protection. If this is the case, you may need a stepladder or other sturdy, safe device to reach the “Learn” or “Smart” button on the garage door motor.

Retain the original transmitter of the RF device you are programming for use in other vehicles as well as for future HomeLink programming.

It is suggested that upon the sale or lease termination of the vehicle, the programmed HomeLink buttons be erased for security purposes. Refer to “*Erasing HomeLink Buttons*” later in these instructions.

You can program a maximum of three devices. To change or replace any of the three devices after it has been initially programmed, you must first erase the current settings. See ‘*Erasing HomeLink Buttons*’ or ‘*Reprogramming a Single HomeLink Button*’ later in these instructions.

## Programming a New HomeLink

**Note:** Some vehicles may require the ignition switch to be turned on or to the second (“accessories”) position for programming and/or operation of HomeLink. It is also recommended that a new battery be placed in the hand-held transmitter of the device being programmed to HomeLink for quicker training and accurate transmission of the radio-frequency signal.

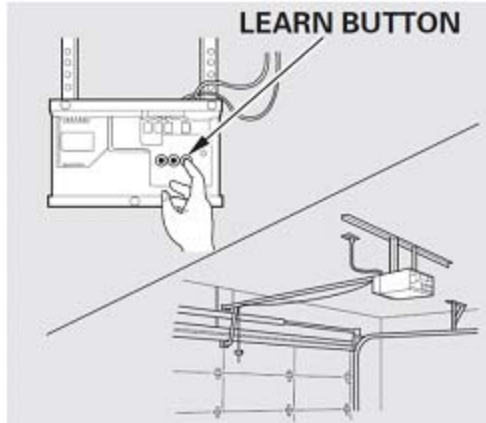
1. Press the HomeLink button that you would like to program. The indicator light will flash orange slowly (if not, refer to “**Erasing HomeLink Buttons**” later in these instructions). You do not need to continue holding the HomeLink button.
2. Position the end of your hand-held transmitter 1–3 inches (2–8 cm) away from the HomeLink button while keeping the indicator light in view.

**Note:** Some hand-held transmitters may actually train better a distance of 6-12 inches (15-20 cm). Keep this in mind if you have difficulty with the Programming Process.

3. Press and hold the hand-held transmitter button while watching the indicator light on HomeLink. Continue pressing the button until the HomeLink indicator light changes from slowly flashing orange to either rapidly flashing green (rolling code) or continuously lit (fixed code) green. Now you may release the hand-held transmitter button.

**Note:** Some devices may require you to replace this “**Programming a New HomeLink**” step 3 with procedures noted in the “**Gate Operator / Canadian / European Programming**” section. If the HomeLink indicator light does not change to rapidly flashing green or continuously lit green after performing these steps, contact HomeLink at [www.HomeLink.com](http://www.HomeLink.com)

4. Press the newly programmed HomeLink button and observe the indicator light.
  - If the indicator light **stays on constantly green**, programming is complete and your device should operate when the HomeLink button is pressed and released.
  - If the indicator light **rapidly flashes green**, firmly **press, hold for two seconds and release** the programmed HomeLink button. Repeat the “press/hold/release” sequence a second time, and, depending on the brand of the garage door opener (or other rolling code equipped device), repeat this sequence a third time to complete the programming process. At this point if your device operates, programming is complete.
  - **If the device does not operate, continue with “Programming a New HomeLink” steps 5-7** to complete the programming of a rolling code equipped device.
5. At the garage door opener receiver (motor-head unit) in the garage, locate the “Learn” or “Smart” Button. This can usually be found where the hanging antenna wire is attached to the motor-head unit (see the Garage Door Opener manual to identify the “Learn Button”).



**Figure 1: Approximate Learn Button Location**

**Note:** A ladder and/or second person may simplify the following steps.

6. Firmly press and release the “Learn” or “Smart” button. (The name and color of the button may vary by manufacturer.) There are typically 30 seconds to initiate step 7.
7. Return to the vehicle and firmly **press, hold for two seconds and release** the programmed HomeLink button. Repeat the “**press/hold/release**” sequence a second time, and, depending on the brand of the garage door opener (or other rolling code equipped device), repeat this sequence a third time to complete the programming process.

HomeLink should now activate your rolling code equipped device.

In the event that there are still programming difficulties or questions, additional HomeLink information and programming videos can be found online at [www.HomeLink.com](http://www.HomeLink.com), [youtube.com/HomeLinkGentex](http://youtube.com/HomeLinkGentex) or by calling the HomeLink Hotline.

## Gate Operator / Canadian Programming

Canadian radio-frequency laws require transmitter signals to “time-out” (or quit) after several seconds of transmission – which may not be long enough for HomeLink to pick up the signal during programming. Similar to this Canadian law, some U.S. gate operators are designed to “time-out” in the same manner. The indicator LED on the hand-held transmitter will go off when the device times out indicating that it has finished transmitting.

If you live in Canada **or** you are having difficulties programming a gate operator or garage door opener by using the “Programming” procedures, replace “**Programming a New HomeLink**” **step 3** with the following:

**Note:** If programming a garage door opener or gate operator, it is advised to unplug the device during the “cycling” process to prevent possible overheating.

3. **Press and release - every two seconds** (“cycle”) your hand-held transmitter until the HomeLink indicator light changes from a slowly flashing orange to either rapidly flashing

green (rolling code) or continuously lit green (fixed code). Now you may release the hand-held transmitter button.

Proceed with “**Programming a New HomeLink**” **step 4** to complete.

### **Additional Steps for Programming a Door System with Feedback**

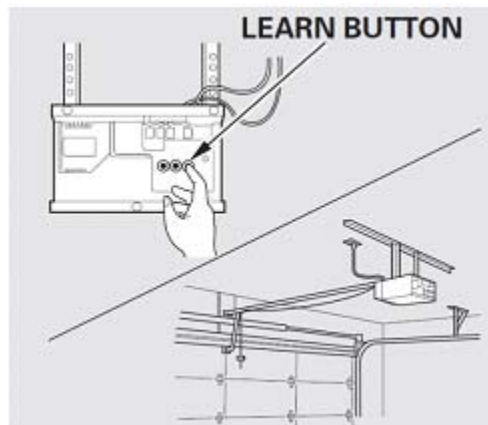
The HomeLink has the capability of receiving Garage Door Status from compatible Garage Door Opener Systems. Check your Garage Door Opener Manual for the available feature and HomeLink compatibility. Also for a listing of compatible systems contact HomeLink at:

[www.HomeLink.com](http://www.HomeLink.com)

1. Within 5 seconds after programming the garage door opener has been completed (refer to **Programming a New HomeLink** section), both garage door operation indicators will flash rapidly green indicating that the garage door feedback has been enabled.

If the indicators do not flash, perform Steps 2 and 3 within the first (10) presses of the HomeLink button after successful programming:

2. Press and release the trained HomeLink button to activate the door. **You now have 1 minute in which to complete step 2.**
3. Once the door has stopped, press and release the “Learn” or “Smart” Button on the Garage Door Opener (**refer to your GDO owner's manual for the location of the “Learn” button**). Both the HomeLink garage door operation indicators will flash rapidly green upon successful synchronization with the Door Opener (within 5 seconds).



**Figure 2: Approximate Learn Button Location**

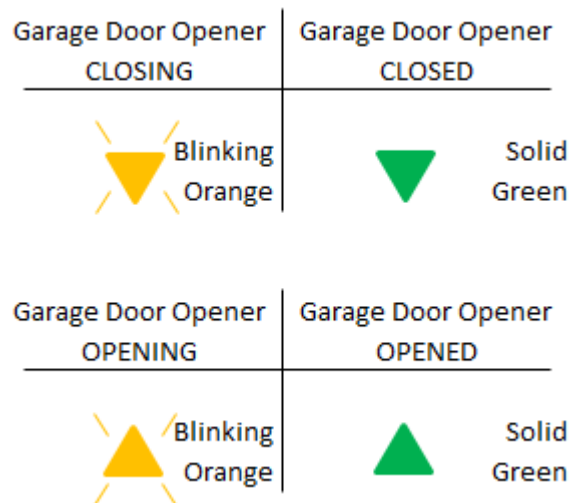
## Using HomeLink

To operate, simply press and release the programmed HomeLink button. Activation will now occur for the trained device (i.e. garage door opener, gate operator, security system, entry door lock, home/office lighting, etc.). For convenience, the hand-held transmitter of the device may also be used at any time.

## Garage Door Feedback

The HomeLink has the capability of receiving Garage Door Status from compatible Garage Door Opener Systems. Check your Garage Door Opener Manual for the available feature and HomeLink compatibility. Also for a listing of compatible systems contact HomeLink at: [www.homelink.com](http://www.homelink.com).

Garage Door Status is then displayed with two arrow-shaped indicators (see figure below):



**Figure 3: Garage Door Status Indication**

The HomeLink has the capability of listening to these messages at a range up to 250m (open line of sight), but range may be reduced by obstacles such as houses or trees. You may have to slow your vehicle speed to receive the CLOSED or OPENED message feedback from the Garage Door Opener.

Recall of the door state after initial feedback is possible by simultaneously pressing either buttons 1 and 2 or buttons 2 and 3 for two seconds. The last recorded message will be displayed for 3 seconds, again following the Garage Door Status Indication of Figure 3 above.

## Erasing HomeLink Buttons

To erase programming from the three buttons (individual buttons cannot be erased but can be “reprogrammed” as outlined below), follow the step noted:

1. Press and hold the two outer HomeLink buttons for at least 10 seconds. The LED indicator will change from continuously lit to rapidly flashing.
2. Release both buttons.  
**Note:** Do not hold for longer than 20 seconds.
3. HomeLink is now in the train (or learning) mode and can be programmed at any time beginning with “**Programming a New HomeLink**” - **step 1**.

## **Reprogramming a Single HomeLink Button**

To program a device to HomeLink using a button previously trained, follow these steps:

1. Press and hold the desired HomeLink button. **DO NOT** release the button.
2. The indicator light will begin to slowly flash orange after 20 seconds. The HomeLink button can be released at this point. Proceed with “**Programming a New HomeLink**” - **step 2**
3. If you do not complete the programming of a new device to the button, it will revert to the previously stored programming.

For questions or comments, visit [www.HomeLink.com](http://www.HomeLink.com), [youtube.com/HomeLinkGentex](https://youtube.com/HomeLinkGentex) or by calling the HomeLink Hotline.

## ***Regulatory Text***

This device complies with FCC rules part 15 and Industry Canada RSS-210. Operation is subject to the following two conditions: (1) This device may not cause harmful interference, and (2) This device must accept any interference that may be received including interference that may cause undesired operation. **WARNING:** The transmitter has been tested and complies with FCC and IC rules. Changes or modifications not expressly approved by the party responsible for compliance could void the user's authority to operate the device.

This equipment complies with FCC and IC radiation exposure limits set forth for an uncontrolled environment. End Users must follow the specific operating instructions for satisfying RF exposure compliance. This transmitter must be at least 20 cm from the user and must not be co-located or operating in conjunction with any other antenna or transmitter.

The term “IC:” before the certification/registration number only signifies that Industry Canada technical specifications were met.

Ce dispositif est conforme à la partie 15 des règles de la FCC et d'Industrie Canada RSS-210. Son fonctionnement est soumis aux deux conditions suivantes: (1) Ce dispositif ne peut causer des interférences nuisibles, et (2) Cet appareil doit accepter toute interférence reçue y compris celle se peut que mai interférences perturbent son fonctionnement. **AVERTISSEMENT:** L'émetteur a-été testé et est conforme aux règles de la FCC et IC. Changements expressément ou modifications non approuvés par la partie responsable de la conformité pourraient annuler l'autorité de l'utilisateur à utiliser l'appareil.

Cet équipement est conforme aux limites FCC d'exposition aux radiations définies pour un environnement non contrôlé. Les utilisateurs finaux doivent suivre les instructions de

fonctionnement spécifiques pour satisfaire aux normes d'exposition aux RF. Cet émetteur ne doit être d'au moins 20 cm de l'utilisateur et ne doit pas être co- située ni fonctionner en conjonction avec une autre antenne ou émetteur.

Le terme " IC:" devant le numéro de certification / enregistrement signifie seulement que les spécifications techniques d'Industrie Canada ont été respectées.