

2-1 Introduction

This chapter tells how to use the notebook.

2-2 Opening and Closing the Notebook

This section tells how to open the notebook cover and access doors. See Figure 2-1.

2-2.1 Opening the Cover

To open the notebook, press hook outward and tilt the cover up to a comfortable viewing angle. (Usually about 110°) See Figure 2-1.



Figure 2-1 Opening the Notebook

To open a door:

1. Insert a small flat edged object (coin edge or flat screw-driver) in a door or cover securing captive screw.
2. Turn the screw counterclockwise until it comes loose from its socket.
3. Repeat steps 1 and 2 for each securing screw.
4. Grab a securing screw and open a door.



Figure 2-2 Opening a Door

Keep all access doors and covers tightly shut when not in use.

2-3 Connecting and Installing Devices

This section gives instructions for installing, removing, changing, or connecting devices via the notebook external ports or sockets.

2-3.1 Serial and Parallel Port

Item 1, Item2, Figure 2-3 shows how to connect serial and parallel cables. Make sure the mating connector is tightly secured by pushing it to the end and lock the screws.

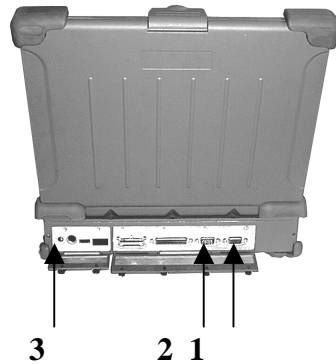


Figure 2-3 Connecting the External Power, Serial , and Parallel ports

disconnecting the adapter.

2-3.3 Diskettes

To install a diskette,

1. Open the PCMCIA slot / diskette drive access door.
2. Slide the diskette into the drive with the printed label facing up until it clicks in place.

To remove the diskette, press the ejector button on the right side of the drive. See Figure 2-4.



Figure 2-4 Removing a Diskette

4. Hold two sides of the FDD / CD-ROM / Bay 1 battery module and slide it out smoothly.

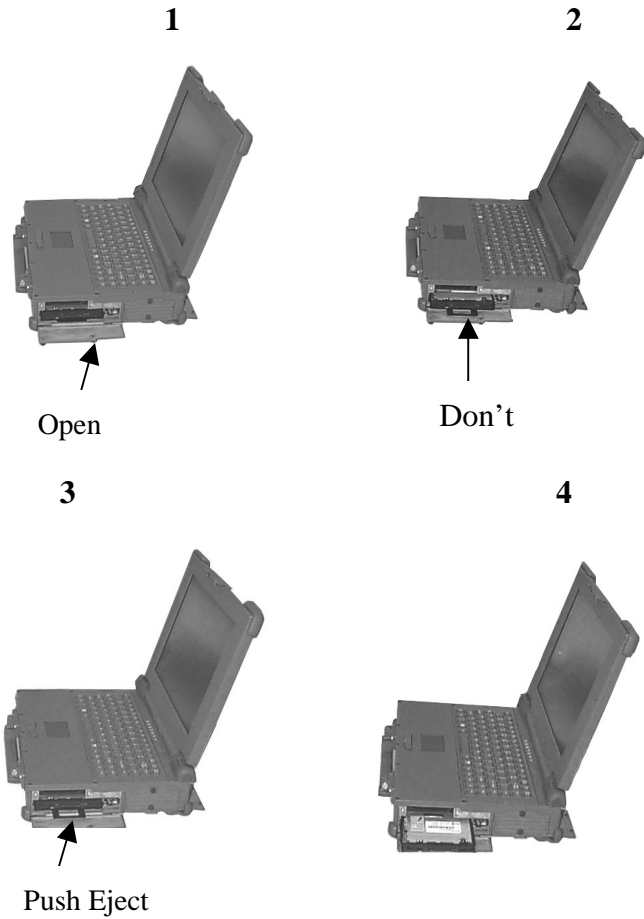


Figure 2-5 Removing a FDD / CD-ROM

To remove the upper card, press the eject button on the left. To remove the lower card, press the button on the right. (See Figure 2-6).



PCMCIA Card

Figure 2-6 Removing a PCMCIA Cards

2. Loosen the screws from the top of the HDD disk.
3. Grab the handle of the hard disk module and pull it out. (See Figure 2-7).
4. Insert the new hard disk module in the slot until it seats firmly.
5. If necessary, run the system configuration program when the system boots next time. See chapter 3 for details.



Hard Disk

Figure 2-7 Removing a Hard Disk

- Low Cost 24.576MHz Crystal Provides Transmit, Receive Data at 100/200/400 Megabits per Second, and Link-Layer Controller Clock at 49.152 MHz
- Fully Interoperable with FireWire Implementation of IEEE Standard 1394
- Provides 6-Pin IEEE1394 Standard Connector*1

NOTE

1. The Cable length of the IEEE 1394 must < 4.5m.
2. The system doesn't support power for the cable.



1394 port

2-4.1 Configuring the System

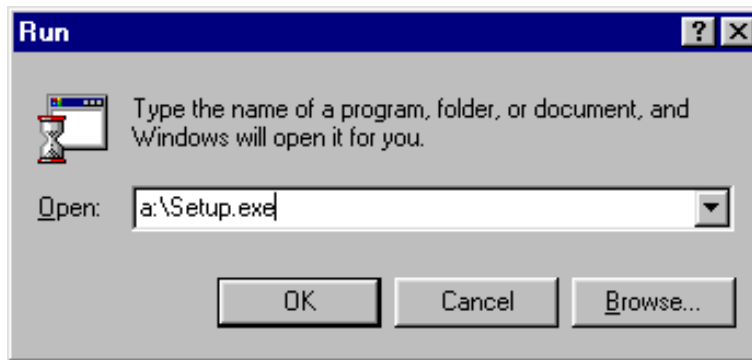
The notebook is configured in the factory. Run the SETUP program when the computer boots for the first time to record the system settings. For more details about configuring the system and when to do it, see Chapter 3.

2-4.2 Installing Software Driver

Before you install your new software, make a backup copy of the original program disk using the DOS Diskcopy command or the Windows disk copy utility in file manager.

2.4.2.1 Installing PCMCIA TI 1225 Driver in Windows 98

1. With Windows running, insert PCI 1225 Driver disk into drive A.
2. In the Windows program manager, select Run.... from the File menu and type A:\Setup.exe. Press ENTER, or choose OK.



4. When the driver installation is completed, then restart your computer.

2-4.2.2 Installing Cardwizard Driver in Windows NT4.0

Installing CardWizard for Windows NT is a simple task. Just insert the diskette into the appropriate drive and follow the prompts on the screen. If you need assistance refer to the instructions below:

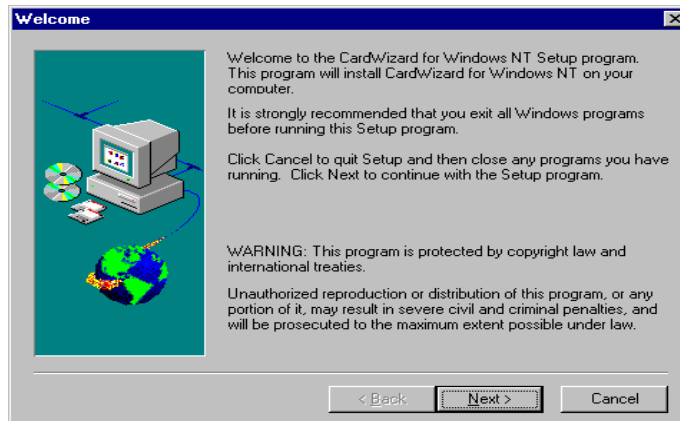
1. If you have any PC cards currently installed in PC card slots, remove them.
2. If your system is connected to a network, log off before starting the installation.
3. Logon as an Administrator.
4. Carefully read the ReadMe file on the installation diskette.
5. Choose Run from the Windows NT Start button.
6. Enter A:\Setup.exe on the Open line in the Run dialog box.
7. Choose OK.

The installation program starts and indicates that Setup is preparing for the installation.

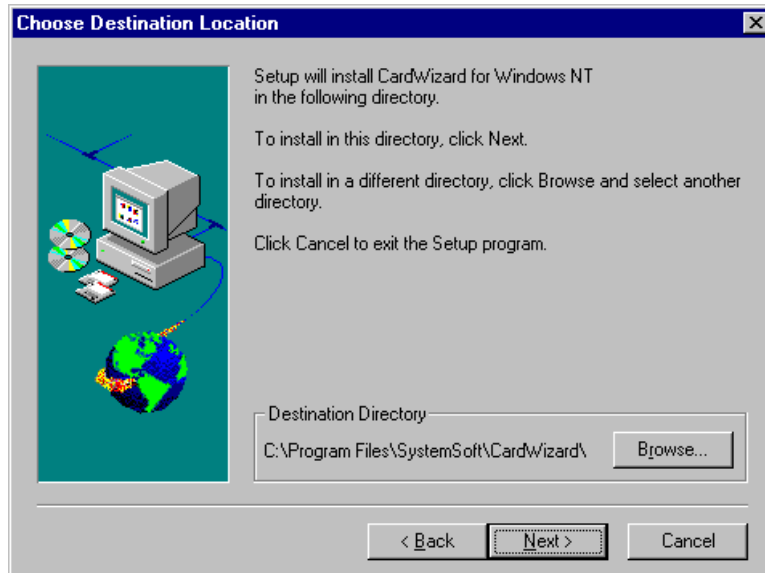
8. Select “Next” button and click it.



9. Select “Next” button to display the welcome screen.



11. You can follow the default directory to install program then click “Next” button or you can create a new directory to install.





2-5 Daily Operation

This section discusses expected daily notebook activity.

2-5.1 Starting the Computer

To start the computer :

1. Make sure all peripherals are properly connected.
2. If using the AC adapter or external power, make sure it is connected.
3. Open the cover.
4. Press the Power button. The power on indicator lights up. The computer performs a Power On Self Test (POST) and checks configuration settings. Depending on the configuration, items tested include:

6. If the cause is known and will not cause other difficulties, press F1. To correct the discrepancy, press F2 and change configuration settings accordingly. See chapter 3 for details about SETUP.
7. After the POST, the system checks for a system password. If one is present, the computer prompts for its entry before continuing. Carefully type it in.

NOTE

The password characters do not appear on the screen.

8. After password confirmation, the system tries to boot from drive A first and then drive C.
9. Adjust brightness, and viewing angle for best appearance and comfort.

2-5.2 Turning Off The Notebook

To turn off the notebook

1. Save all data and close all open programs.
2. Press the Power button to turn off power.
3. Swing the cover closed until it clicks shut.
4. Turn off and disconnect all peripheral devices.
5. Close and tighten all access doors and covers.

4. Turn on the notebook.



Figure 2-8 Plug Car Power Cable in Notebook

2.6 Using External Power Sources

CAUTION

The external power adapter is rated for input sources within the following constraints:

A-Series:

AC: 100-240 V, 50-60 Hz

DC: 9-20VDC direct input without charging function (option) 22.8-32 VDC external car adapter/charger (option)

Connecting to sources outside this range may damage the external power adapter

outlet immediately.

2-6.1 Using AC External Adapter

A-Series provides an AC external adapter for standard configuration. Use the nearby AC power source.

2-6.2 Charging the Batteries

Make sure the external adapter is connected to the computer. It has two charging rates depending on notebook operating or power off.

Section 2-4.1 gives detailed instructions on connecting an external power source and charging the batteries.

2-7 Running On Battery Power

The notebook has several power management features to prolong continuous operation on battery power.

This section describes the power saving modes and tells how to take best advantage of them. It includes default settings for each mode. For instructions about changing them, see chapter 3.

2-8 Use the External FDD

1. Plug the 36-pin external FDD cable to the external FDD, and the other end (25-pin) to the computer printer port. (See Figure 2-9)
2. Plug the DC power cable to the external FDD, and plug the other end to one of two PS/2 ports.



Figure 2-9 Using the External FDD