

## Chapter 2

## Operation

### 2-1 Introduction

This chapter tells how to use the notebook.

### 2-2 Opening and Closing the Notebook

This section tells how to open the notebook cover and access doors. See Figure 2-1.

#### 2-2.1 Opening the Cover

To open the notebook, press hook outward and tilt the cover up to a comfortable viewing angle. (Usually about 110°) See Figure 2-1.



**Figure 2-1** Opening the Notebook

## 2-2.2 Closing the Cover

To close the notebook, tilt the cover down until it clicks shut. The computer stays on if you close the cover while system power is applied.

## 2-2.3 Opening the PCMCIA/FDD/CD ROM Door

Open doors only when it is required to access components behind them.

To open a door:

1. Insert a small flat edged object (coin edge or screw-driver) in a door or cover securing captive screw.
2. Turn the screw counterclockwise until it comes loose from its socket.
3. Repeat steps 1 and 2 for each securing screw.
4. Grab a securing screw and open a door.



**Figure 2-2 Opening a Door**

## 2-2.4 Shutting the PCMCIA/FDD/CD-ROM Door

1. Shut the door or put the PCMCIA/FDD/CD-ROM back in place.

2. Align the door or cover securing screws with their sockets.
3. Use a flat edged tool (coin or screw driver) to turn the screws clockwise until tight.

**NOTE**

Keep all access doors and covers tightly shut when not in use.

## 2-3 Connecting and Installing Devices

This section gives instructions for installing, removing, changing, or connecting devices via the notebook external ports or sockets.

### 2-3.1 Serial and Parallel Port

Item 1, Item 2, Figure 2-3 shows how to connect serial and parallel cables. Make sure the mating connector is tightly secured by pushing it to the end and lock the screws.



**Figure 2-3 Connecting the External Power, Serial, and Parallel ports**

### 2-3.2 External Power Adapter

Item 3, Figure 2-3 shows how to connect the power adapter. Make sure the mating connector is tightly secured by pushing it to the end.

**NOTE**

The notebook can be on or off when connecting or disconnecting the adapter.

**2-3.3 Diskettes**

To install a diskette,

1. Open the PCMCIA slot/ diskette drive access door.
2. Slide the diskette into the drive with the printed label facing up until it clicks in place.

To remove the diskette, press the ejector button on the right side of the drive. See Figure 2-4.

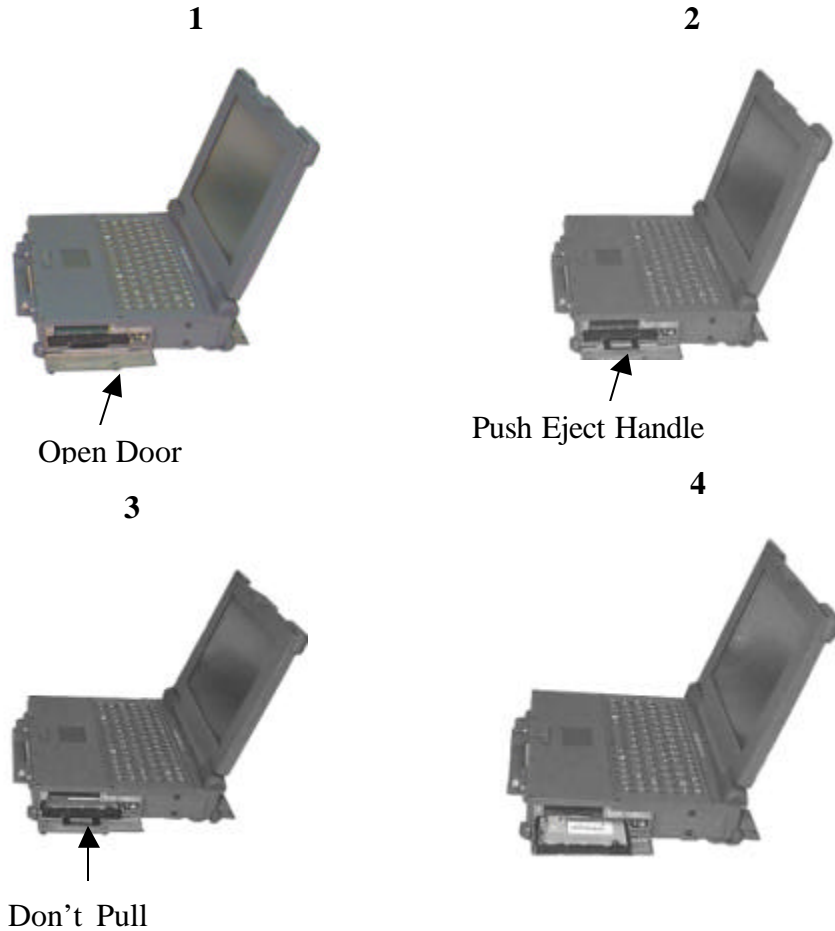


**Figure 2-4 Removeing a Diskette**

**2-3.4 Remove the Floppy Diskette Drive / CD-ROM / Bay 1 Battery**

1. Open the PCMCIA /FDD/CD-ROM door.
2. Push the ejector handle at the front bottom of the FDD/CD-ROM/Bay 1 battery compartment to let it spring back about 0.4 cm..

3. Pull out the handle outwards about 3 cm and stop pulling to prevent it from being damaged.
4. Hold two sides of the FDD / CD-ROM/Bay 1 battery module and slide it out smoothly.



**Figure 2-5 Removing a FDD/CD-ROM**

### 2-3.5 PCMCIA Cards

The PCMCIA ports support up to two type-II PCMCIA cards or one type-III PCMCIA card. A type-III PCMCIA card occupies both slots.

1. Open the PCMCIA slot/diskette drive door.
2. Slide the card into the slot with the insert marking facing up until it seats.

To remove the upper card, press the eject button on the left. To remove the lower card, press the button on the right. (See Figure 2-6).



**Figure 2-6 Removing a PCMCIA Cards**

## 2-3.6 Hard Disk

### CAUTION!

Installing or removing a hard disk when the computer is on can destroy the system board and hard disk.

To remove and change the hard disk:

1. Turn the computer off.
2. Loosen the screws from the top of the hard disk.
3. Grab the handle of the hard disk module and pull it out. (See Figure 2-7).
4. Insert the new hard disk module in the slot until it seats firmly.
5. If necessary, run the system configuration program when the system boots next time. See chapter 3 for details.



**Figure 2-7 Removing a Hard Disk**

## 2.3.7 IEEE 1394

- IEEE 1394-1995 COMPLIANT AND COMPATIBLE WITH PROPOSAL 1394A

- 3.3V CORE LOGIC WITH UNIVERSAL PCI INTERFACE COMPATIBLE WITH 3.3V AND 5V PCI SIGNALING ENVIRONMENTS COMPLIANT TO LATEST PCI SPECIFICATION ,PCI 2.2
- PCI POWER MANAGEMENT COMPLIANT
- CABLE POWER PRESENCE MONITORING
- LOW COST 24.576MHZ CRYSTAL PROVIDES TRANSMIT, RECEIVE DATA AT 100/200/400 MEGABITS PER SECOND, AND LINK-LAYER CONTROLLER CLOCK AT 49.152 MHZ
- FULLY INTEROPERABLE WITH FIREWIRE IMPLEMENTATION OF IEEE STANDARD 1394
- PROVIDES 6-PIN IEEE1394 STANDARD CONNECTOR\*1

<b>NOTE</b>
-------------

1. The Cable length of the IEEE 1394 must < 4.5m.
2. The system supports 15W power for the cable.

### 2.3.8 Lan Module (10/100 base-T Fast Ethernet unit)

- Integrated Fast Ethernet MAC,Physical chip and transceiver in one chip
- Support 10 Mb/s and 100 Mb/s N-way Auto negotiation operation
- Compliant to PCI Revision 2.2
- Support ACPI,PCI power management
- Support Wake-On-LAN function and remote wake-up
- Half/Full duplex capability
- Support digital and analog loopback capability on both ports
- Support full duplex flow control (IEEE 802.3x)

Operation support:

- Windows 98



— Windows NT4.0

— Windows 2000



Lan Port

Modem Port

## 2-4 First Time Use

This section describes activities to complete prior to using the notebook the first time.

1. Put the rechargeable battery pack into the battery compartment.
2. Connect the power adapter to the power port.
3. Connect the power adapter into a properly rated power source.
4. Turn on the computer.

### 2-4.1 Configuring the System

The notebook is configured in the factory. Run the SETUP program when the computer boots for the first time to record the system settings. For more details about configuring the system and when to do it, see Chapter 3.

### 2-4.2 Installing Software Driver

Before you install your new software, make a backup copy of the original program disk using the DOS Diskcopy command or the Windows disk copy utility in file manager.

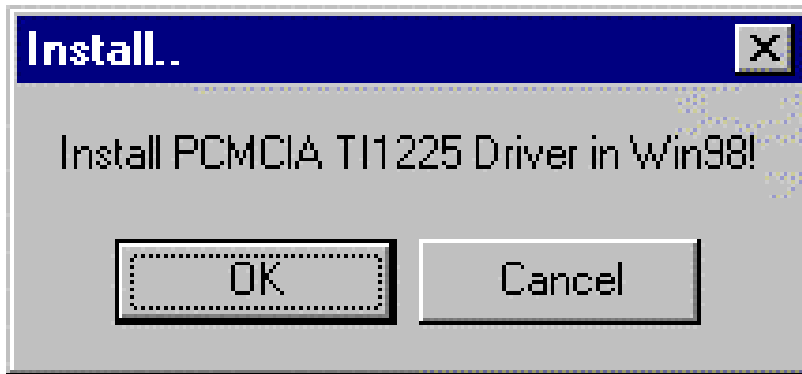
#### 2.4.2.1 Installation PCMCIA TI 1225 Driver in Windows 98

1. With Windows running, insert PCI 1225 Driver disk into drive A.



2. In the Windows program manager, select Run.... from the File menu and type A:\Setup.exe. Press ENTER, or choose OK.

3. Select "OK" button to install PCMCIA driver.



4. When install driver completed then restart your computer.



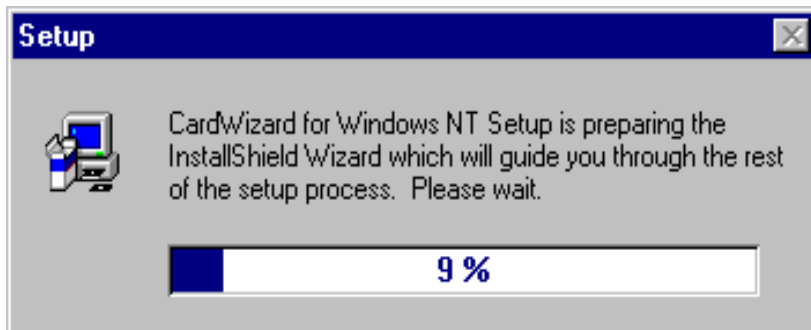
### 2-4.2.2 Installation Cardwizard Driver in Windows NT4.0

Installing CardWizard from Windows NT is a simple task. Just insert the diskette into the appropriate drive and follow the prompts on the screen. If you need assistance refer to the instructions below:

1. If you have any PC cards currently installed in PC card slots, remove them.
2. If your system is connected to a network, log off before starting the installation.
3. Log on as an Administrator.
4. Carefully read the ReadMe file on the installation diskette.
5. Choose Run from the Windows NT Start button.
6. Enter A:\Setup.exe on the Open line in the Run dialog box.
7. Choose OK.

The installation program starts and indicates that Setup is preparing for the installation.

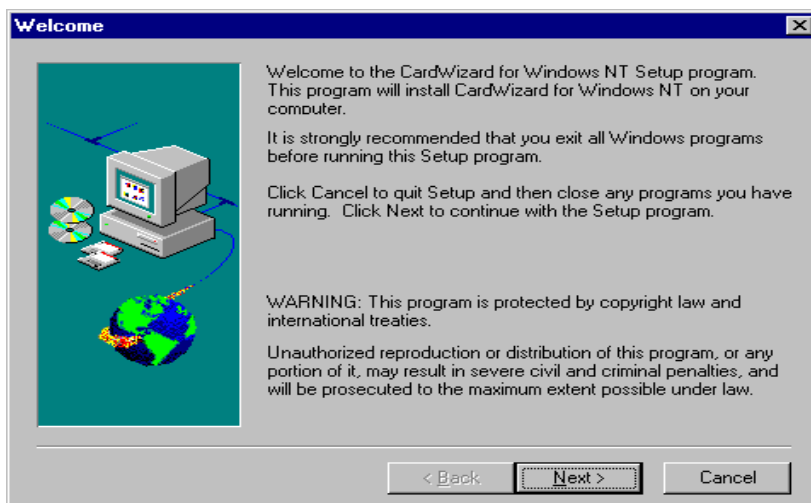
You will then be guided through the installation process.



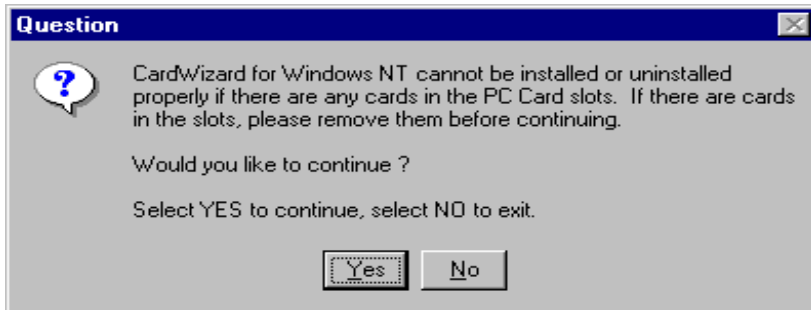
8. Select “Next” button then double click.



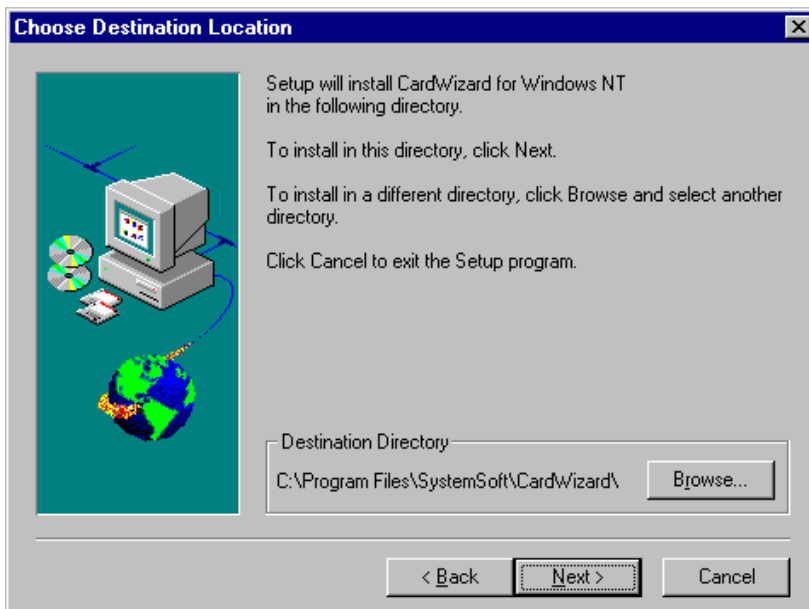
9. Select “Next” button to display the welcome screen.



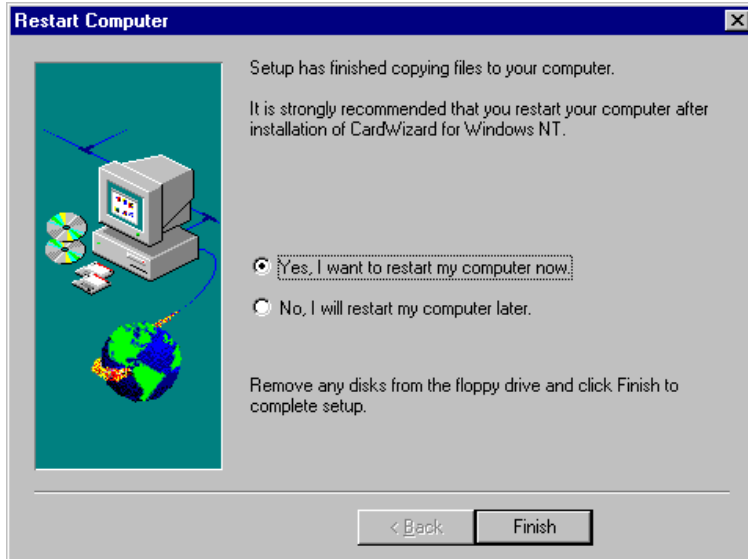
10. The following warning will appear. Remove any inserted PC Cards.



11. You can follow the default directory to install program then double click "Next" button or you can create new directory to install.



12. After all files have been copied, the following screen will be displayed. Then you select "Yes, I want to restart my computer now" then double click "Finish" button.



## 2-5 Daily Operation

This section discusses expected daily notebook activity.

### 2-5.1 Starting the Computer

To start the computer :

1. Make sure all peripherals are properly connected.
2. If using the AC adapter or external power, make sure it is connected.
3. Open the cover.
4. Press the Power button. The power on indicator lights up. The computer performs a Power On Self Test (POST) and checks configuration settings. Depending on the configuration, items tested include :

- system board
  - system DRAM
  - video controller
  - keyboard controller
  - I/O controllers
  - hard disk
  - diskette drive
5. If the POST finds an inconsistency between expected and actual system configuration it will display an error message.
  6. If the cause is known and will not cause other difficulties, press F1. To correct the discrepancy, press F2 and change configuration settings accordingly. See chapter 3 for details about SETUP.
  7. After the POST, the system checks for a system password. If one is present, the computer prompts for its entry before continuing. Carefully type it in.

<b>NOTE</b>
-------------

The password characters do not appear on the screen.

8. After password confirmation, the system tries to boot from drive A first and then drive C.
9. Adjust brightness, and viewing angle for best appearance and comfort.

## 2-5.2 Turning Off The Notebook

To turn off the notebook

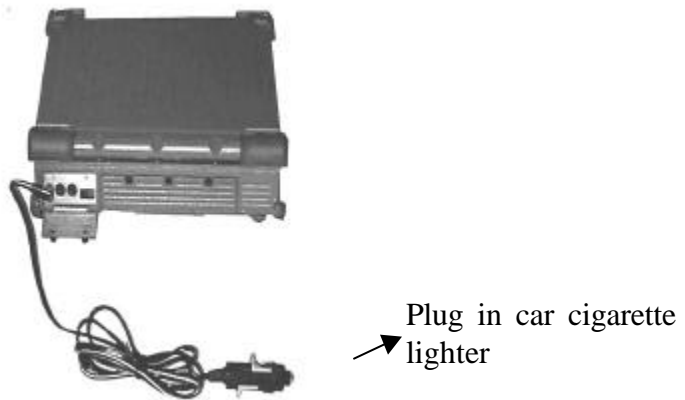
1. Save all data and close all open programs.
2. Press the Power button to turn off power.
3. Swing the cover closed until it clicks shut.
4. Turn off and disconnect all peripheral devices.
5. Close and tighten all access doors and covers.

## 2-5.3 Using the Notebook in the Car

When you using the notebook in the car, you must carefully follow as:



1. Start engine wait five to ten minutes and then plug car power cable into car cigarette. (See Figure 2-8).
2. Before have notebook connected with car power cable be sure the notebook is off.
3. Once you have the notebook connected car power cable.
4. Turn on of the notebook.



**Figure 2-8 Plug Car Power Cable in Notebook**

## 2.6 Using External Power Sources

### CAUTION

The external power adapter is rated for input sources within the following constraints:

A-Series:

AC: 100-240 V, 50-60 Hz

DC: 9-20VDC direct input without charging function (option)

22.8-32 VDC external car adapter/charger (option)

Connecting to sources outside this range may damage the external power adapter

To save battery power, use power adapter with an external power source whenever possible.

Tips for using the external power adapter.

1. Connect the external adapter to the computer as the main power source no matter when the computer is in use or not.
2. If the external adapter is not connected while the computer is in operation and the power indicator is blinking, which shows the batteries are running out of energy, please connect the adapter to the computer and plug in the power cord to the outlet immediately.

### **2-6.1 Using AC External Adapter**

A-Series provides an AC external adapter for standard configuration. Use the nearby AC power source.

### **2-6.2 Charging the Batteries**

Make sure the external adapter is connected to the computer. It has two charging rates depending on notebook operating or power off.

Section 2-4.1 gives detailed instructions on connecting an external power source and charging the batteries.

## **2-7 Running On Battery Power**

The notebook has several power management features to prolong continuous operation on battery power.

This section describes the power saving modes and tells how to take best advantage of them. It includes default settings for each mode. For instructions about changing them, see chapter 3.

## **2-8 Use the External FDD**

1. Plug the 36 pin external FDD cable to the external FDD, and the other end (25-pin) to the computer printer port. (See Figure 2-9)

2. Plug the DC power cable to the external FDD, and plug the other end to one of two PS/2 ports.



**Figure 2-9 Use the External FDD**

