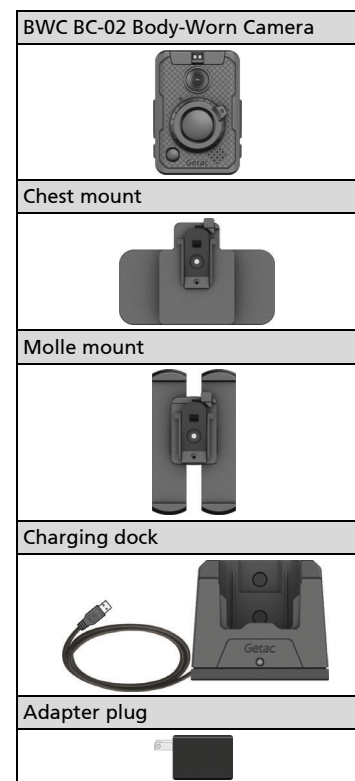


# VERETOS MVS

## Veretos BC-02 Body-Worn Camera QUICK START GUIDE

### 1. Unpacking



### 2. Identifying Components



No.	Description
1	On/Off Button: Wi-Fi wake-up supported
2	Microphone
3	Power Status LED
4	Camera Status LED
5	Mode Switch (Normal/Covert)
6	HD Camera Lens
7	Wheel Switch (C1/C2/C3/C4)
8	Main Button (Start/Stop/Mark/Confirm)
9	Speaker
10	Dock Connector: Connects to the charging dock.
11	Interlocking Grooves: Fit the tongues of the chest/molle mount.

### 3. Attaching to the Mount

To attach the camera to the mount:

1. Aligning the tongues and grooves, slide the mount downwards to the camera until the two fit and click into place.



2. Slide the latch inwards to secure the camera to the mount.

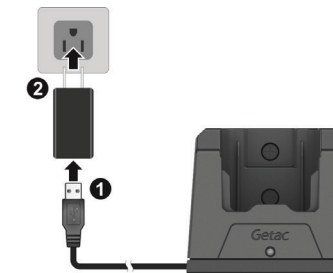


To detach:

1. Slide the latch outwards to the unlocked position.
2. Slide the camera off the mount.

### 4. Docking

1. Connect the power cable to the adapter plug (1).
2. Connect the adapter plug to an electrical outlet (2).



3. Put BWC BC-02 in the charging dock.

The LED on the dock lights up to indicate power is connected.



## 5. Notices

### FCC Regulations

This device complies with Part 15 of the FCC Rules. Operation is subject to the following two conditions: (1) This device may not cause harmful interference, and (2) this device must accept any interference received, including interference that may cause undesired operation.

To assure continued compliance, follow the attached installation instructions and do not make any unauthorized modifications.

#### **Warning:**

To assure continued FCC emission limit compliance, the user must only use shielded interface cables when connecting to external units. Also, any unauthorized changes or modifications to this equipment could void the user's authority to operate this device.

This equipment has been tested and found to comply with the limits for a Class B digital device, pursuant to part 15 of the FCC Rules.

These limits are designed to provide reasonable protection against harmful interference in a residential installation.

This equipment generates, uses and can radiate radio frequency energy and, if not installed and used in accordance with the instructions, may cause harmful interference to radio communications.

However, there is no guarantee that interference will not occur in a particular installation.

If this equipment does cause harmful interference to radio or television reception, which can be determined by turning the equipment off and on, the user is encouraged to try to correct the interference by one or more of the following measures:

- Reorient or relocate the receiving antenna.
- Increase the separation between the equipment and receiver.
- Connect the equipment into an outlet on a circuit different from that to which the receiver is connected.
- Consult the dealer or an experienced radio/TV technician for help.

This device is designed and manufactured not to exceed the emission limits for exposure to radio frequency (RF) energy set by the Federal Communications Commission of the U.S. Government.

---

## 6. More Information

For detailed information of the product, go to Getac web link at <http://www.getac.com>  
→ **Support.**