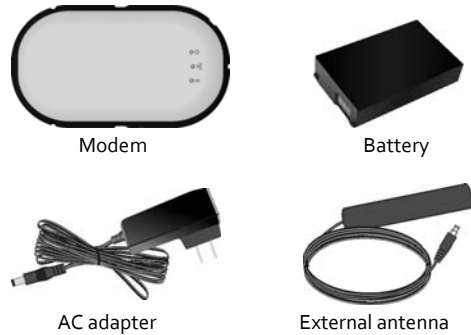


1. Overview

Congratulations and thank you for purchasing the Bluetooth EDGE Wireless Modem. (Brand: Getac; Model: Energy)

This guide provides instructions on using the modem with Windows Mobile 5.0/6.1 devices and Windows XP/Vista computers.

Packing List



Specifications

Frequency Bands	Quad-band EGSM/GPRS/EGPRS 900/1800/850/1900 MHz
Bluetooth Profile	Serial Port Profile (SPP) Dial-up Networking Profile (DUN)
Application	Data transmission
OS Support	Windows Mobile 5.0/6.0 Windows XP/Vista
Power	Rechargeable 3.7 volt 2400mAh Li-ion battery pack Power jack for 5V power supply

Indicators

Power	
Off	Power off
Green	Power on
Red	Power on with low battery
Orange	Battery charging in progress
Red Flash Twice	No battery or critically low battery
Red Flash	Error in charging
Red/Green Flash	Bluetooth pair mode

GSM/GPRS	
Off	GSM off
Green Flash	Ready, idle, or data transfer in progress
Green	Data call in progress

Bluetooth	
Off	Bluetooth off
Blue	Ready to be paired
Blue Slow Flash	Active Bluetooth connection

2. Hardware Setup

- Loosen the bottom screw (1) with a screwdriver and slide the battery cover outward (2) to detach it from the modem.

CAUTION: The modem does not support PIN codes of SIM cards. If a PIN code has been set, disable the PIN code before installing the SIM card.

- Note the orientation of the SIM card and insert the card into the SIM card slot.

- Note the orientation of the battery and fit it into the compartment.

- Replace the battery cover and tighten the screw.

- Locate the power connector of the modem by opening the rubber cover. Connect one end of the AC adapter into the power connector (1) and the other end into an electrical outlet (2). This charges the battery pack.

- An external antenna is provided for better signal reception in a car. Locate the antenna connector of the modem by opening the rubber cover. Connect one end of the antenna into the antenna connector and attach the other end to the highest possible position.

- Turn on the modem by pressing the power button.



3. Software Setup – Windows Mobile 5.0/6.1

NOTE: Windows Mobile 5.0 screens are used in this section as examples.

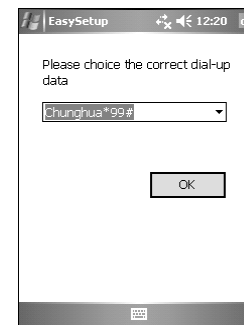
EasySetup Installation

A program called EasySetup helps you set up Windows Mobile 5.0/6.1 devices for using the modem. Please contact your dealer or Getac to obtain the file named **EasySetupInstaller.CAB**.

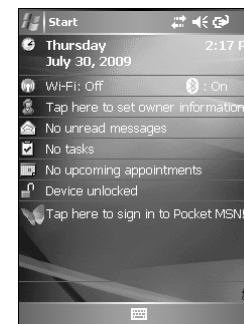
To install EasySetup, execute the file **EasySetupInstaller.CAB**. Then, follow the onscreen instructions to complete the installation.

Bluetooth Pairing and Dial-up Settings

- On your Windows Mobile device, turn on the Bluetooth function and set it to "visible."
- Press the power button of the modem for at least 3 seconds. This will prepare the modem for Bluetooth pairing.
- Tap **Start → Programs → EasySetup**.
- EasySetup will try to pair with the modem. When the pairing is completed, a message appears to inform you.
- EasySetup will acquire the mobile operator's data from the SIM card and list the dial-up number(s) for you to select. Select the correct number and tap **OK**.



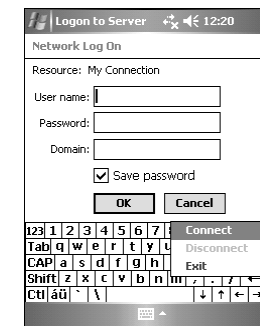
- The EasySetup shortcut icon appears at the bottom right corner of the screen.



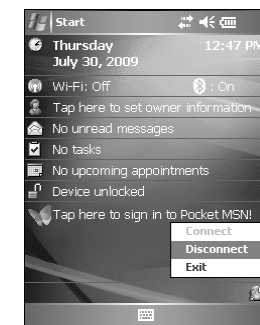
Network Connection and Disconnection

Once the shortcut has been created as described before, you can connect to the mobile network through the modem at any time.

- On your Windows Mobile device, turn on the Bluetooth function and set it to "visible."
- Power on the modem.
- To connect, tap the EasySetup shortcut icon and tap **Connect**.
- In the "Logon to Server" screen, enter the information provided by your mobile operator. Do not disable the **Save password** item. Then tap **OK**.



- When mobile network connection is completed, a message appears to inform you. The Windows Mobile device can now access the Internet through the modem.
- To disconnect, tap the EasySetup shortcut icon and tap **Disconnect**.



- If there is a need to stop the program so it will not occupy the system memory, tap the EasySetup shortcut icon and tap **Exit**.

NOTE: If you change the SIM card, you have to recreate the shortcut overwriting the previous one.

4. Software Setup – Windows XP/Vista

NOTE: Windows Vista screens are used in this section as examples.

EasySetup Installation

A program called EasySetup helps you set up Windows XP/Vista computers for using the modem. Please contact your dealer or Getac to obtain the file named **EasySetupInstaller.msi**.

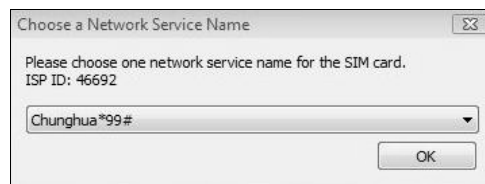
To install EasySetup:

1. Execute the file **EasySetupInstaller.msi**.
2. In the setup wizard screen, click **Next**.
3. When the installation is completed, click **Close**.

Bluetooth Pairing and Dial-up Settings

NOTE: EasySetup is designed for the Windows' built-in Bluetooth driver only. If your computer comes with a third-party Bluetooth driver, you have to use its specific Bluetooth utility to pair the computer with the modem. (Check the documentation of your computer to know how to perform the Bluetooth pairing procedure.) While pairing, the passkey **0000** is required. After the manual pairing, you can use EasySetup for dial-up settings.


1. On your computer, turn on the Bluetooth function and set it to "visible."
2. Press the power button of the modem for at least 3 seconds. This will prepare the modem for Bluetooth pairing.
3. From Windows desktop, click **Start → EasySetup**. EasySetup will automatically pair with the Bluetooth modem.
4. EasySetup will acquire the mobile operator's data from the SIM card and list the dial-up number(s) for you to select. Select the correct number and click **OK**.



5. The EasySetup shortcut icon  appears in the Windows taskbar.

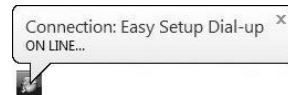
Network Connection and Disconnection


Once the shortcut has been created as described before, you can connect to the mobile network through the modem at any time.

1. On your computer, turn on the Bluetooth function and set it to "visible."
2. Power on the modem.
3. To connect, click the EasySetup shortcut icon  and click **Dial-up**.



4. When mobile network connection is completed, the "ON LINE..." message appears. Your computer can now access the Internet through the modem.



5. To disconnect, click the EasySetup icon and click **Disconnect**.
6. If there is a need to stop the program so it will not occupy the system memory, click the EasySetup shortcut icon  and click **Exit**.

NOTE: If you change the SIM card, you have to recreate the shortcut overwriting the previous one.

5. Regulatory Statements and Safety Precautions

European Notice

Products with the CE marking comply with Radio & Telecommunication Terminal Equipment Directive (R&TTE) (1999/5/EEC), the Electromagnetic Compatibility Directive (89/336/EEC) and the Low Voltage Directive (73/23/EEC) – as amended by Directive 93/68/ECC – issued by the Commission of the European Community.

Compliance with these directives implies conformity to the following European Standards:

EN301489-1: Electronic compatibility and Radio spectrum Matters (ERM), ElectroMagnetic Compatibility (EMC) standard for radio equipment and services; Part 1: Common technical requirements

EN301489-17: Electronic compatibility and Radio spectrum Matters (ERM), ElectroMagnetic Compatibility (EMC) standard for radio equipment and services; Part 17: Specific conditions for 2.4 GHz wideband transmission systems and 5 GHz high performance WLAN equipment

EN55022: Radio disturbance characteristics

EN55024: Immunity characteristics

EN6100-3-2: Limits for harmonic current emissions

EN6100-3-3: Limitation of voltage fluctuation and flicker in low-voltage supply system

EN62311: Product Safety

The manufacturer cannot be held responsible for modifications made by the User and the consequences thereof, which may alter the conformity of the product with the CE Marking.

USA FCC (Federal Communications Commission) Radio Frequency Interference Statement

Warning: Changes or modifications to this unit not expressly approved by the party responsible for compliance could void the user authority to operate the equipment.

This device complies with Part 15 of the FCC Rules. Operation is subject to the following two conditions:

- (1) this device may not cause harmful interference, and
- (2) this device must accept any interference received, including interference that may cause undesired operation.

Safety Precautions

- Use only the AC adapter supplied with your device. Use of another type of AC adapter will result in malfunction and/or danger.
- This product is intended to be supplied by a LISTED Power Unit marked with "LPS," "Limited Power Source," and output rated + 5 V dc / 2.2 A.
- Use a specified battery in the equipment.

- Do not use the AC adapter in a high moisture environment. Never touch the AC adapter when your hands or feet are wet.
- Allow adequate ventilation around the AC adapter when using it to operate the device or charge the battery. Do not cover the AC adapter with paper or other objects that will reduce cooling. Do not use the AC adapter while it is inside a carrying case.
- Connect the AC adapter to a proper power source. The voltage and grounding requirements are found on the product case and/or packaging.
- Do not use the AC adapter if the cord becomes damaged.
- Do not attempt to service the unit. There are no serviceable parts inside. Replace the unit if it is damaged or exposed to excess moisture.
- Use a specified AC adapter approved by the manufacturer.
- Do not mutilate, puncture, or dispose of battery in fire. The battery can burst or explode, releasing hazardous chemicals.
- Important instructions
Caution: Risk of explosion if battery is replaced by an incorrect type. Dispose of used batteries according to the instructions.
Replace only with the same or equivalent type recommended by the manufacturer.
The battery must be recycled or disposed of properly.
Use the battery only in the specified equipment.

RF Exposure (SAR) Warning

- This equipment complies with FCC RF radiation exposure limits set forth for an uncontrolled environment, under 47 CFR 2.1093 paragraph (d)(2).
- End users must follow the specific operation instruction for satisfying RF exposure compliance.
- This transmitter must not be co-located or operating in conjunction with any other antenna or transmitter except those that are described within this filing.
- The measured SAR levels evaluated are in compliance with the FCC RF exposure guidelines.
- The maximum reported Body Maximum SAR Measurement (1g) value is: 1.198 W/Kg.

