



# **GIANT Service Tool Key User Manual**

**Giant Electric Vehicle**

**October 7th, 2016**

# Agenda

- System Diagram
- Install Service Tool Key driver
- Upgrade Service Tool Key
- FCC & IC Warning Statement

# System Diagram



We need this Service Tool Key  
for our service tool application.

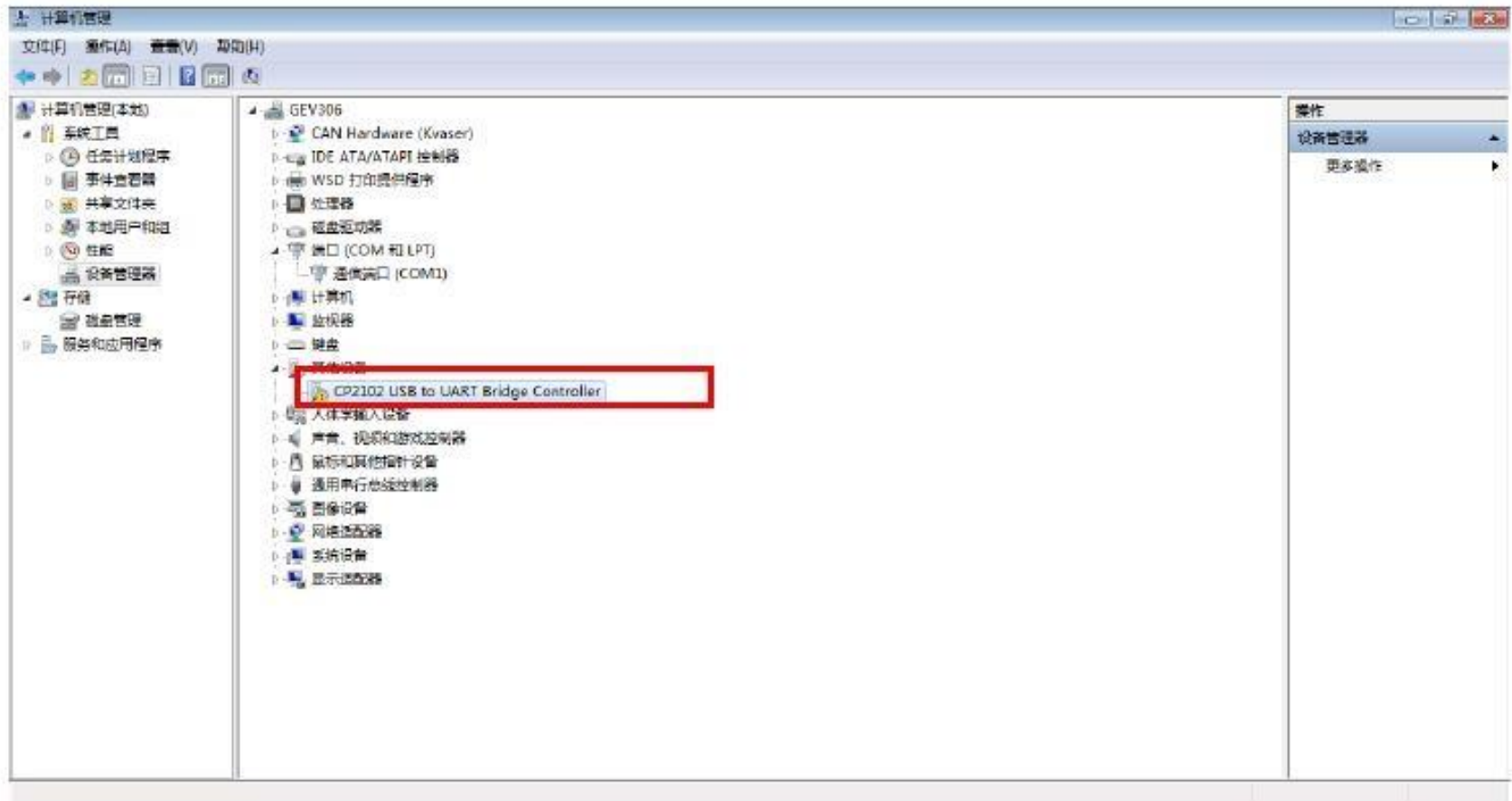
# System Diagram



We need this Service Tool Key  
for our service tool application.

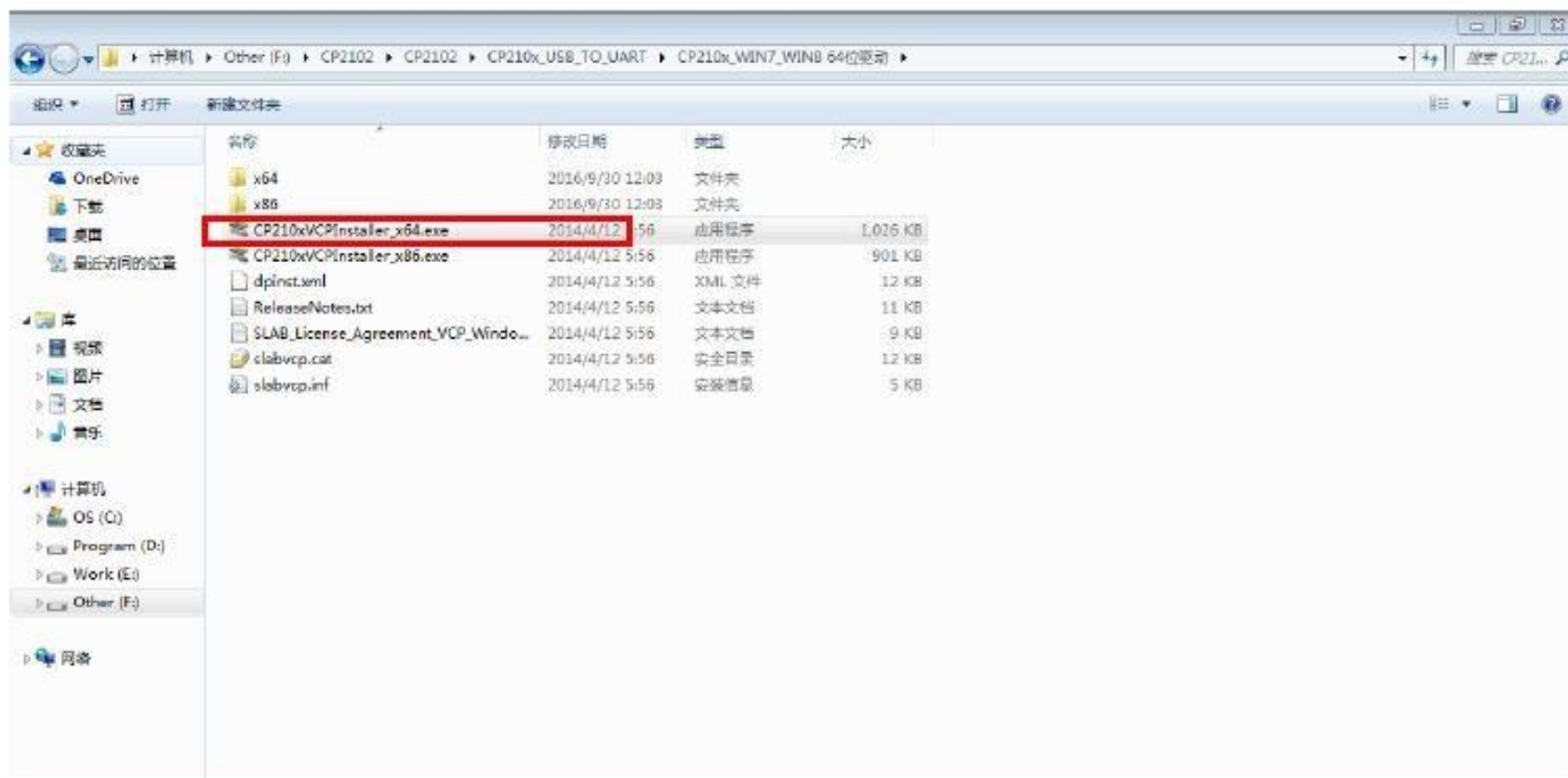
# Install Service Tool Key Driver

1、 Plug the Dongle Driver into your computer, then the computer can detected the unknown device



# Install Service Tool Key Driver

## 2、Install according to your computer OS



# Install Service Tool Key Driver

## 3、Next



# Install Service Tool Key Driver

## 4、Choose Accept->Next





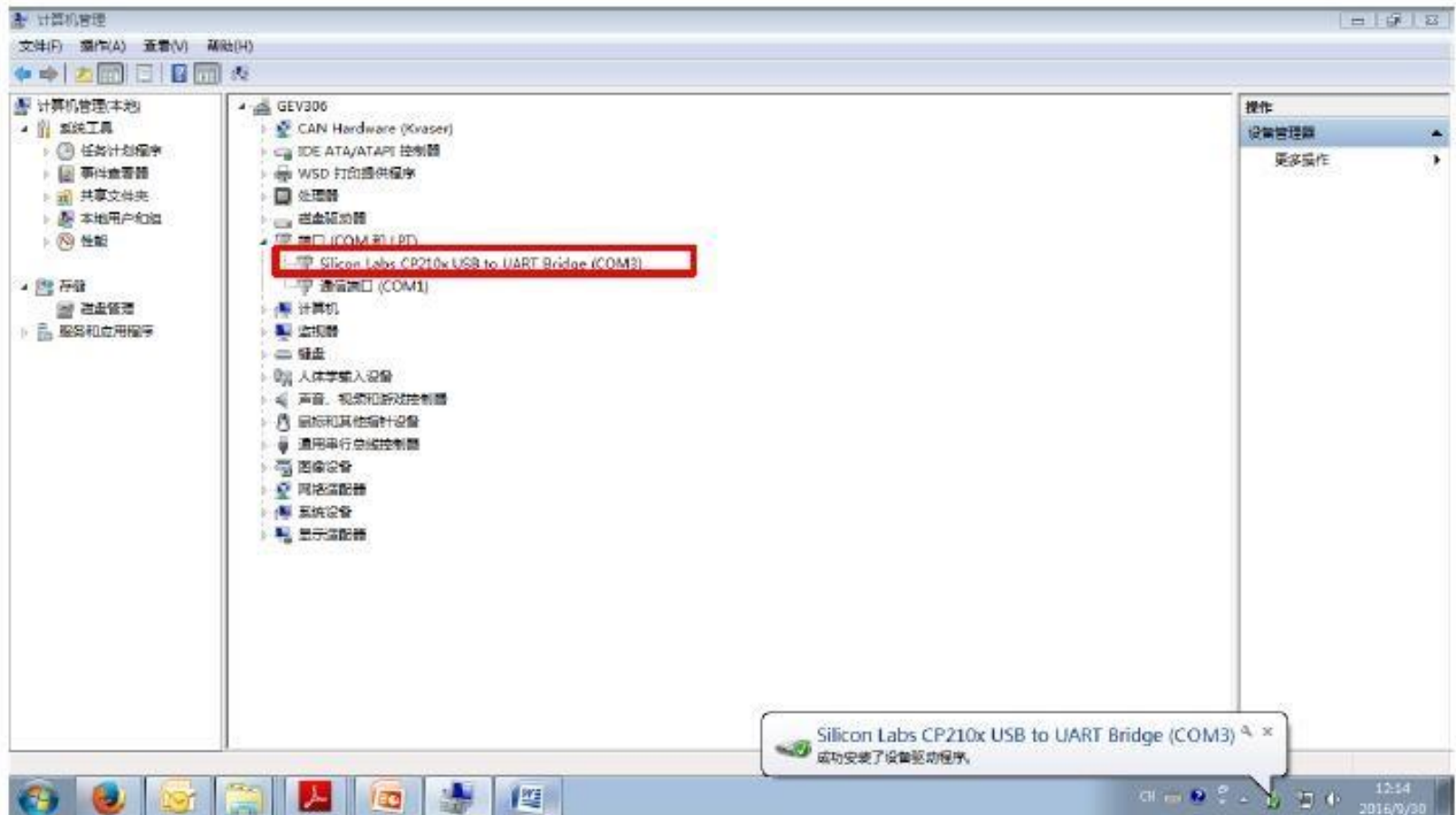
# Install Service Tool Key Driver

## 5、Finished



# Install Service Tool Key Driver

## 6、Installation finished



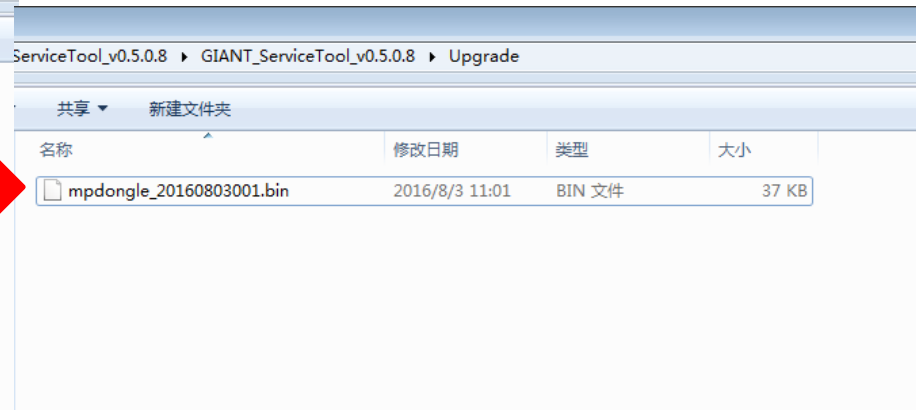
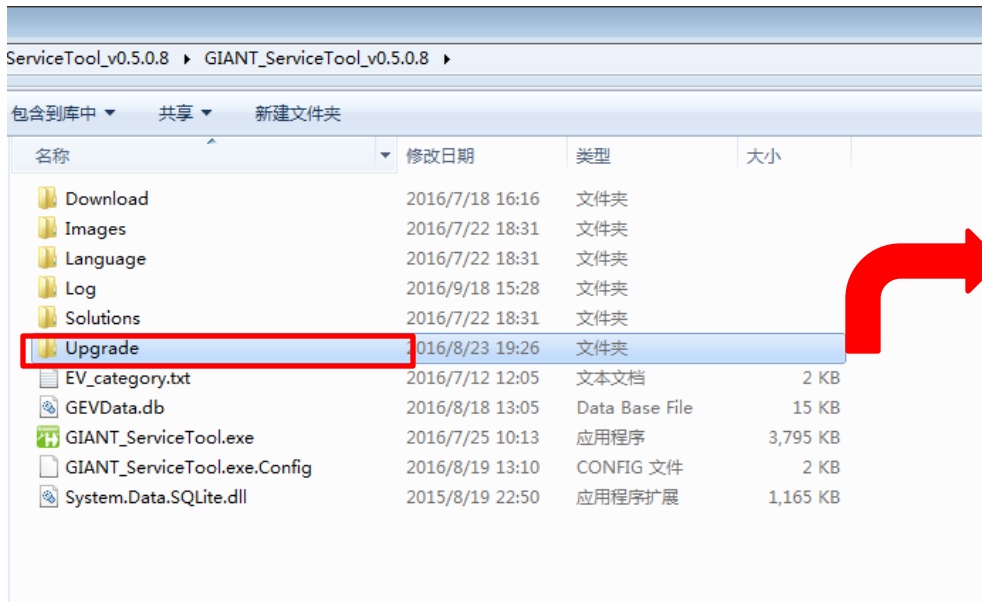
# Upgrade service tool key

- 1、 Plug the Dongle Driver into your computer



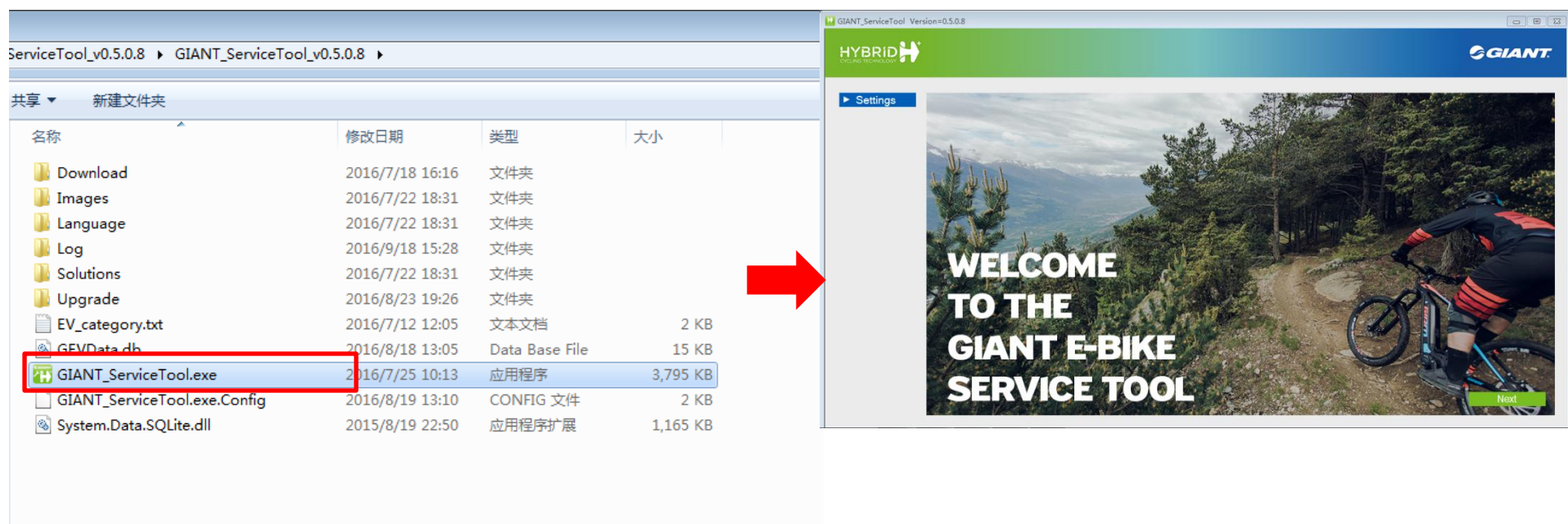
# Upgrade service tool key

- 2、 Put the firmware(.bin) that you want upgrade in the Upgrade folder



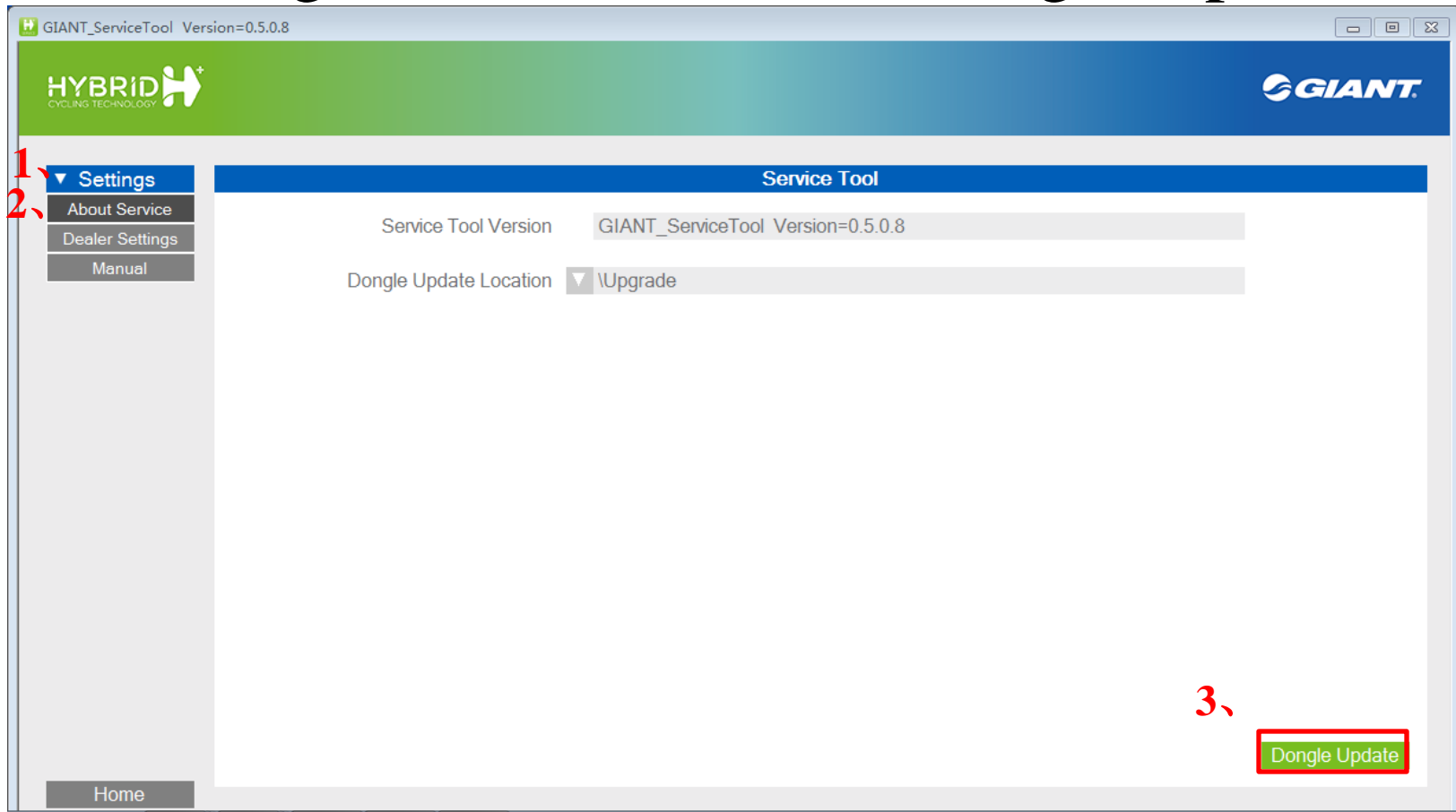
# Upgrade service tool key

- 3、Launch GIANT Service Tool



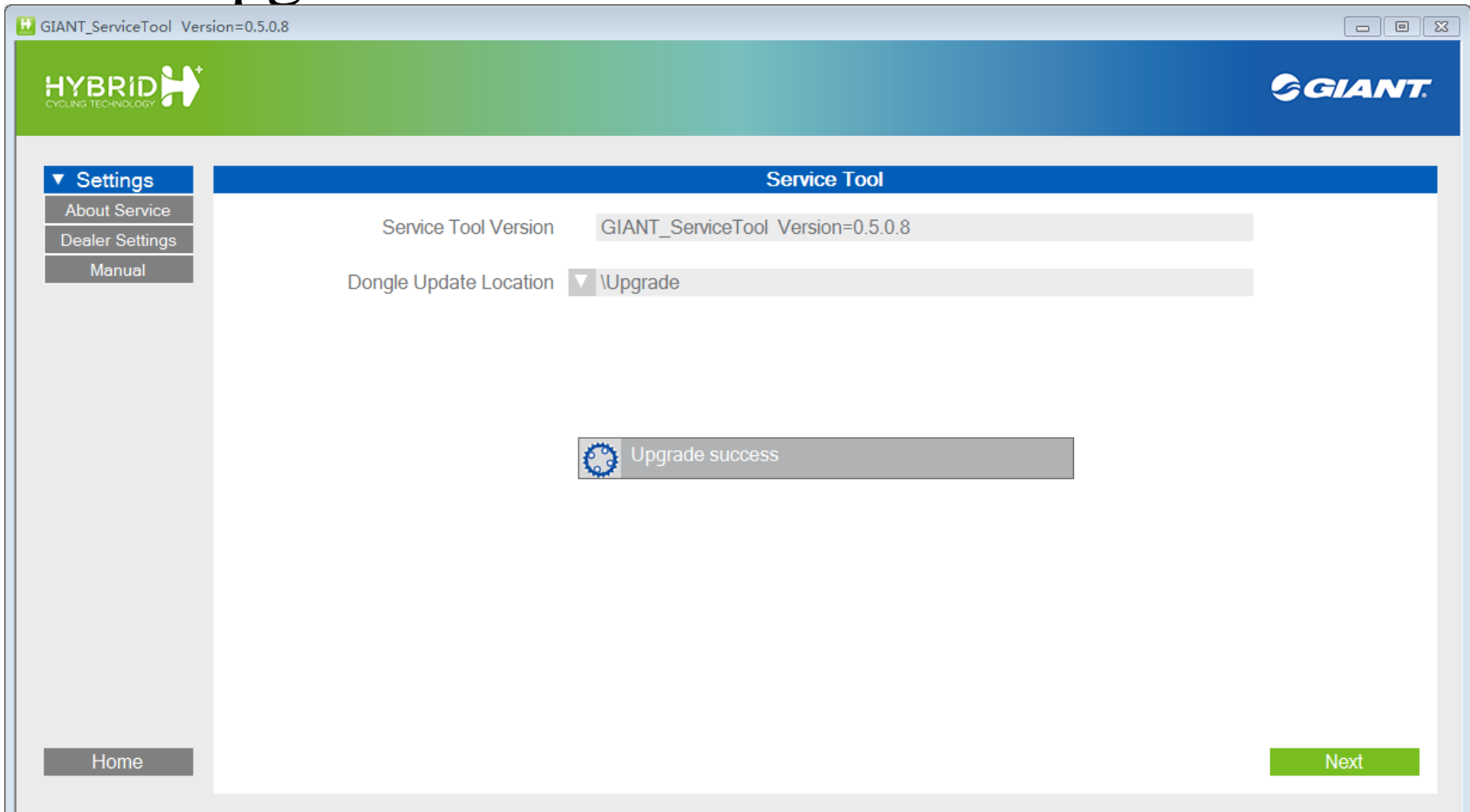
# Upgrade service tool key

- 4. Setting->About Service->Dongle Update



# Upgrade service tool key

- 5、Upgrade finished



# FCC & IC Warning Statement

- *For FCC*
- 
- *This device complies with part 15 of the FCC Rules. Operation is subject to the following two conditions:*
- *(1) This device may not cause harmful interference, and*
- *(2) this device must accept any interference received, including interference that may cause undesired operation.*
- 
- *Please note that changes or modifications not expressly approved by the party responsible for compliance could void the user's authority to operate the equipment.*
- 
- *Note: This equipment has been tested and found to comply with the limits for a Class B digital device, pursuant to part 15 of the FCC Rules. These limits are designed to provide reasonable protection against harmful interference in a residential installation. This equipment generates, uses and can radiate radio frequency energy and, if not installed and used in accordance with the instructions, may cause harmful interference to radio communications. However, there is no guarantee that interference will not occur in a particular installation. If this equipment does cause harmful interference to radio or television reception, which can be determined by turning the equipment off and on, the user is encouraged to try to correct the interference by one or more of the following measures:*
- *—Reorient or relocate the receiving antenna.*
- *—Increase the separation between the equipment and receiver.*
- *—Connect the equipment into an outlet on a circuit different from that to which the receiver is connected.*
- *—Consult the dealer or an experienced radio/TV technician for help.*
- 
- *This equipment complies with radio frequency exposure limits set forth by the FCC for an uncontrolled environment.*
- *This device must not be co-located or operating in conjunction with any other antenna or transmitter.*



# FCC & IC Warning Statement

- *For IC*
- 
- *This device complies with Industry Canada's licence-exempt RSS-247. Operation is subject to the following two conditions:*
- *(1) This device may not cause interference; and*
- *(2) This device must accept any interference, including interference that may cause undesired operation of the device.*
- 
- *Le présent appareil est conforme aux CNR d'Industrie Canada applicables aux appareils radio exempts de licence. L'exploitation est autorisée aux deux conditions suivantes:*
- *(1) l'appareil ne doit pas produire de brouillage;*
- *(2) l'utilisateur de l'appareil doit accepter tout brouillage radio électrique subi, même si le brouillage est susceptible d'en compromettre le fonctionnement.*
- 
- *This equipment complies with radio frequency exposure limits set forth by the Innovation, Science and Economic Development Canada for an uncontrolled environment.*
- *This device must not be co-located or operating in conjunction with any other antenna or transmitter.*
- 
- *Cet équipement est conforme aux limites d'exposition aux radiofréquences définies par la Innovation, Sciences et Développement économique Canada pour un environnement non contrôlé.*
- *Ce dispositif ne doit pas être utilisé à proximité d'une autre antenne ou d'un autre émetteur.*



Thank you!