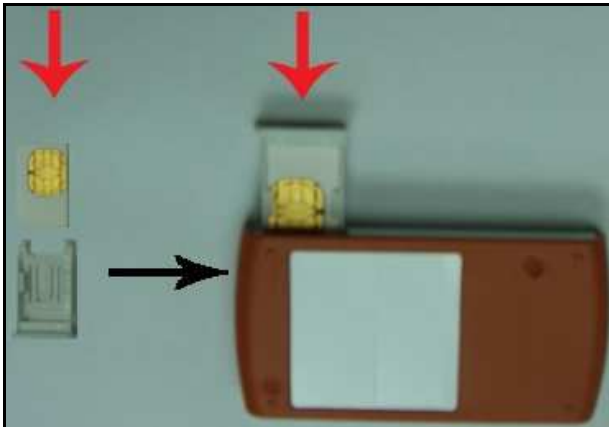


Getting started

Installing mobile PhoneTools (mPT)

**** DON'T connect your device to the PC/Notebook until the installation wizard instructs you to do. ****

Installing (U)SIM card



Starting the installation

To install mPT, insert the CD-ROM containing the program in the appropriate drive. When installing mPT from the CD-ROM, the installation program starts automatically.

If the installation program fails to start automatically, execute the following instructions:

- From the Start menu, select the Run command. Select the CD-ROM drive or type d:\start.exe (where D: is the CD-ROM drive). Run the file Setup.exe in order to start the installation.

Installation Wizard

An InstallShield Wizard will guide you step-by-step through the installation process, prompting for information where needed. During the installation procedure, a program group is created. This group contains the icons of the mPT application and will be accessible from the Start menu. The Setup Complete window will appear when installation is completed.

Let the Device Setup completes the device detection, then the following will be displayed



Now you can connect the device with the PC/Notebook.

A progressing window (below) will be displayed until completion.



A connection between the device and the computer is created and the mPT main window is displayed.

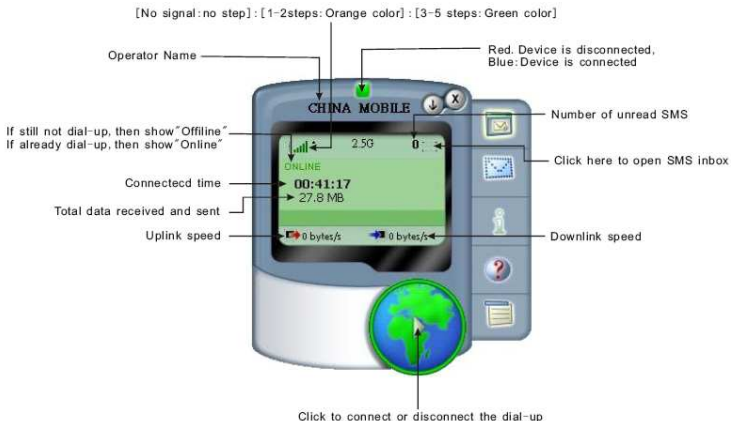
Uninstalling mobile PhoneTools

- In the Windows taskbar, click the Start menu and select Control Panel. In the Control Panel window, double-click the Add or Remove programs option.
- Highlight the mobile PhoneTools program and, depending on your OS, click the Modify/Delete or Change/Remove button.
- The uninstallation procedure begins and the program will be removed.

Mobile PhoneTools main window

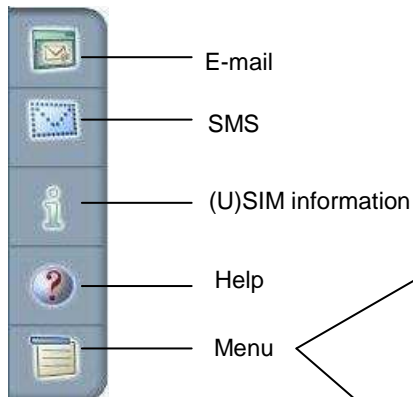
Once your device is connected to your computer, the following operations can be performed easily:

- Send and receive e-mail
- SMS messaging,
- Get (U)SIM information
- Launch an Internet session
- Menu



Menu tree

Right-hand-side icons



Send	<u>Send Short Message</u>
	<u>Outbox</u>
Receive	<u>Inbox</u>
	<u>Retrieve SMS</u>
Setup	<u>General Setup</u>
	<u>Live Update</u>
	<u>Live Update Configuration</u>
	<u>PIN Code Modification</u>
	<u>Activate PIN Code</u>
	<u>Change Operator</u>
	<u>Band Selection</u>
	<u>SMS Configuration</u>
	<u>Internet Connections</u>
View	<u>Internet Connections Log</u>
	<u>Device Information</u>
Help	<u>Help Topics</u>
	<u>About mobile PhoneTools</u>
Exit:	<u></u>

LED Indication in USB Modem hardware

1. LED turns off: No power supply to device,
2. Green LED keeps lighting up: Searching network, or waiting PIN input,
3. Green LED flashes slowly: clamp on EDGE/GPRS/GSM network, but still not access data service,
4. Green LED flashes fast: Accessing data service under EDGE/GPRS/GSM service (e.g. downloading, browsing, video streaming,...),
5. Blue LED flashes slowly: clamp on 3G/3.5G network but still not access data service.
6. Blue LED flashes fast: Accessing data service under 3G/3.5G (e.g. downloading, browsing, video streaming,...),
7. Red LED keeps lighting up: No SIM,
8. Red LED flashes fast: SIM error/All other errors

Copyrights

© Avanquest Software 2001-07. All rights reserved.

Trademarks

All product names mentioned in this document are trademarks or registered trademarks of their respective owners.

Statement

Music or other audio works, whether originating from CD's, MP-3's or some other source, ("Music Materials") may be protected under copyright law. Unauthorized copying of copyrighted works may be contrary to the provisions of the copyright laws of the United States and other countries. It is your responsibility, not Mobile's, to ensure that your use of PC Suit software and/or Devices to copy, edit, play or otherwise use any Music Materials does not violate the copyright laws. You are responsible for obtaining any necessary permission and paying any necessary licensing fees for the Music Materials or other materials you choose to copy, edit, play or otherwise use. A violation of copyright laws could result in a civil or criminal claim brought against you, even if you do not receive any money or other commercial benefit from your copying or other use of the material. This software should only be used for your personal, noncommercial purposes.

This device complies with Part 15 of the FCC Rules. Operation is subject

to the following two conditions: (1) this device may not cause harmful interference, and (2) this device must accept any interference received, including interference that may cause undesired operation.

CE Marking



This device complies with Part 15 of the FCC Rules. Operation is subject to the following two conditions: (1) this device may not cause harmful interference, and (2) this device must accept any interference received, including interference that may cause undesired operation.

For questions regarding your product or this FCC declaration, contact:

Giant International Ltd.

3500 Lenox Road, Suite 630

Atlanta GA 30326

Office: +1 678 904 6077

Fax: +1 678 904 6030

Email : mdegroot@giantintl.com

To identify this product, refer to the Part, Series, or Model number found on the product.

The FCC requires the user to be notified that any changes or modifications made to this device that are not expressly approved by Giant Electronics Limited may void the user's authority to operate the equipment.

This equipment has been tested and found to comply with the limits for a Class B digital device, pursuant to Part 15 of the FCC Rules. These limits are designed to provide reasonable protection against harmful interference in a residential installation. This equipment generates, uses, and can radiate radio frequency energy and, if not installed and used in accordance with the instructions, may cause harmful interference to radio communications. However, there is no guarantee that interference will not occur in a particular installation. If this equipment does cause harmful interference to radio or television reception, which can be determined by

turning the equipment off and on, the user is encouraged to try to correct the interference by 1 or more of the following measures:

- Reorient or relocate the receiving antenna
- Increase the separation between the equipment and receiver
- Connect the equipment into an outlet on a circuit different from that to which the receiver is connected
- Consult the dealer or an experienced radio or television technician for help

This product emits radio frequency energy but it has been tested for FCC RF for body SAR compliance with the provided USB cable for use close to the body, While there may be differences between the SAR levels of various devices and at various positions, they all meet the government requirement for RF exposure provided that it is used with a USB cable that ensures a minimum distance of 1.5 cm from the human body. Use of other accessories may not ensure compliance with FCC RF exposure guidelines.

The product must be installed to provide a separation distance of at least

1.5 cm from all the persons and must not be co-located or operating in conjunction with any other antenna or transmitter.

Nevertheless, the device should be used in such a manner that the potential for human contact with the antenna during normal operation is minimized.