

Always there to help you

Register your product and get support at
www.philips.com/support



User manual

PHILIPS

Contents

1	Important	2
	Important safety instructions	2
<hr/>		
2	Your portable speaker	3
	Introduction	3
	What's in the box	3
	Overview of the speaker	3
<hr/>		
3	Get started	4
	Charge the built-in battery	4
	Turn on/off	4
<hr/>		
4	Play from Bluetooth devices	5
	Connect a device	5
	Disconnect a device	5
	Reconnect a device	6
<hr/>		
5	Play from external devices	7
<hr/>		
6	Product information	8
	Amplifier	8
	Speaker	8
	Bluetooth	8
	General information	8
<hr/>		
7	Troubleshooting	9
	General	9
	About Bluetooth device	9
<hr/>		
8	Notice	10
	Care of the environment	10
	Trademark notice	11

1 Important



Warning

- Never remove the casing of this speaker.
- Never lubricate any part of this speaker.
- Never place this speaker on other electrical equipment.
- Keep this speaker away from direct sunlight, naked flames or heat.

- ⑫ Apparatus shall not be exposed to dripping or splashing.
- ⑬ Do not place any sources of danger on the apparatus (e.g. liquid filled objects, lighted candles).



Note

- The type plate is located on the bottom of the apparatus.

Important safety instructions

- ① Read these instructions.
- ② Keep these instructions.
- ③ Heed all warnings.
- ④ Follow all instructions.
- ⑤ Do not use this apparatus near water.
- ⑥ Clean only with dry cloth.
- ⑦ Do not block any ventilation openings. Install in accordance with the manufacturer's instructions.
- ⑧ Do not install near any heat sources such as radiators, heat registers, stoves, or other apparatus (including amplifiers) that produce heat.
- ⑨ Only use attachments/accessories specified by the manufacturer.
- ⑩ Refer all servicing to qualified service personnel. Servicing is required when the apparatus has been damaged in any way, such as liquid has been spilled or objects have fallen into the apparatus, the apparatus has been exposed to rain or moisture, does not operate normally, or has been dropped.
- ⑪ Battery shall not be exposed to excessive heat such as sunshine, fire or the like.

2 Your portable speaker

Congratulations on your purchase, and welcome to Philips! To fully benefit from the support that Philips offers, register your product at www.philips.com/welcome.

Introduction

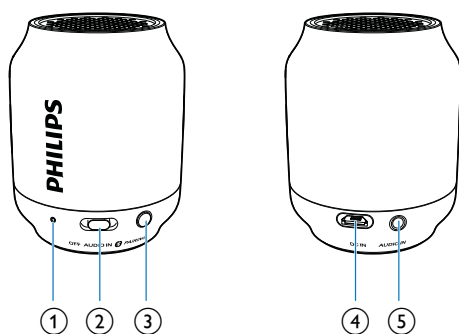
With this speaker, you can enjoy audio from Bluetooth-enabled devices or other external devices.

What's in the box

Check and identify the contents of your package:

- Speaker
- USB cable for charging
- Short user manual

Overview of the speaker



- ① LED indicator

- Indicate battery or Bluetooth connection status.

② **Source selector (OFF/AUDIO IN/Bluetooth icon)**

- Select Bluetooth or AUDIO IN source.
- Turn the speaker off.

③ **PAIRING**

- Enter Bluetooth pairing mode.
- Disconnect Bluetooth connection.

④ **DC IN**

- Recharge the built-in battery.

⑤ **AUDIO IN**

- Connect an external audio device.

3 Get started

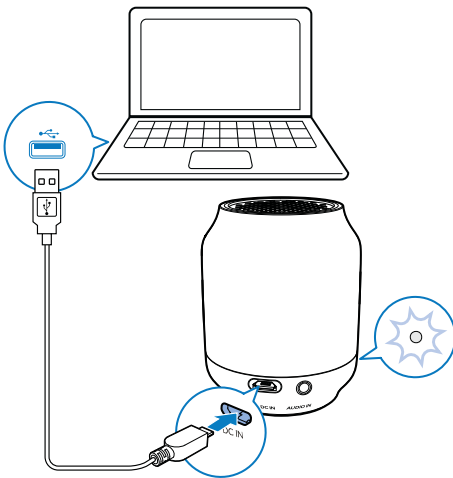
Always follow the instructions in this chapter in sequence.

Charge the built-in battery

The speaker is powered by a built-in rechargeable battery.

Note

- Before use, fully charge the built-in battery.
- The micro USB socket is for charging only.
- It takes you approximately two hours to fully charge the battery.
- Rechargeable battery has a limited number of charge cycles. Battery life and number of charge cycles vary by use and settings.



Connect the USB cable between

- the **DC IN** socket on the speaker; and
- a USB socket on a computer.

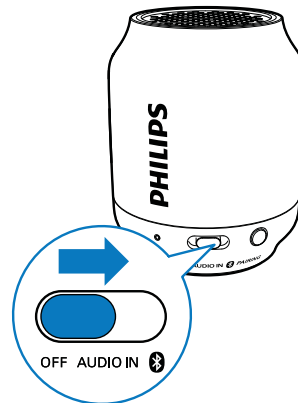
The LED indicator indicates the battery status.

Under charging	Fully charged
----------------	---------------

"OFF" mode	Flashing white	Off
"AUDIO IN" mode	Flashing white	Solid white
"Bluetooth" mode	Flashing blue or solid blue (depending on Bluetooth connection status)	Flashing blue or solid blue (depending on Bluetooth connection status)

Turn on/off

- To turn the speaker on, slide the source selector to **AUDIO IN** or **0**.



- To turn the speaker off, slide the source selector to **OFF**.

Switch to standby mode

The speaker switches to standby mode automatically in the following situations:

- In Bluetooth mode, the connection with Bluetooth device is invalid for 15 minutes; or
- In AUDIO IN mode, no audio input cable is connected for 15 minutes.

4 Play from Bluetooth devices

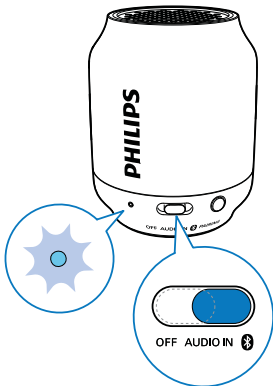
With this speaker, you can listen to audio from Bluetooth-enabled devices.

Note

- The speaker can memorize a maximum of four paired devices. The fifth paired device will replace the first one.
- Any obstacle between this speaker and a Bluetooth device can reduce the operational range.
- Keep away from any other electronic device that may cause interference.
- The operational range between this speaker and a Bluetooth device is approximately 10 meters (30 feet).
- Make sure that no audio input cable is connected to the **AUDIO IN** socket.

Connect a device

- 1 Slide the source selector to **0**.
↳ The LED indicator flashes blue.



- 2 On your Bluetooth device, enable Bluetooth and search for Bluetooth devices

that can be paired (refer to the user manual of the device).

- 3 Select **[Philips BT50]** displayed on your device for pairing and connection. If necessary, input "0000" as the pairing password.
↳ After successful pairing and connection, the speaker beeps twice, and the LED indicator turns solid blue.
- If you cannot find **[Philips BT50]** on your device, press and hold **PAIRING** for more than three seconds until you hear triple beeps.

- 4 Play audio on the Bluetooth device.

Tip

- You can use your Bluetooth device to control play.

LED indicator (blue)

Indicator	Bluetooth connection status
Fast flashing (2Hz)	Pairing
Slow flashing (1Hz)	Connecting
Solid blue	Connected

Disconnect a device

- Press and hold **PAIRING** for more than three seconds;
↳ The speaker beeps for three times.
- Disable Bluetooth on your device; or
- Move the device beyond the communication range.
↳ The speaker beeps twice, and the LED indicator flashes blue.



Note

- Before connecting another Bluetooth device, disconnect the current device first.

Reconnect a device

When you turn on the speaker, it will reconnect the last connected device automatically; If not, select **[Philips BT50]** on your Bluetooth device to start connection.

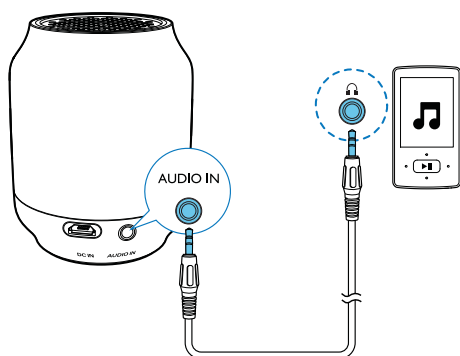
5 Play from external devices

With this speaker, you can also listen to an external audio device such as an MP3 player:



Note

- Make sure that music playback through Bluetooth is stopped.



- 1 Connect an audio input cable (not supplied) with a 3.5 mm connector on both ends to
 - the **AUDIO IN** socket on this speaker; and
 - the headphone socket on the external device.
- 2 Slide the source selector to **AUDIO IN**.
↳ The LED indicator turns white.
- 3 Play audio on the external device (refer to its user manual).

6 Product information



Note

- Product information is subject to change without prior notice.

General information

Power Supply (through micro USB socket)	5 V, 0.5 A
Built-in Li-polymer Battery	3.7 V, 365 mAh
Dimensions - Main Unit (W x H x D)	61 x 76 x 61 mm
Weight - Main Unit	0.1 kg

Amplifier

Rated Output Power	1.5W RMS
Frequency Response	100 -16000 Hz, ±3dB
Signal to Noise Ratio	> 70 dBA
Audio-in Input	300 mV RMS

Speaker

Speaker Impedance	4 ohm
Speaker Driver	4cm full range
Sensitivity	>82dB/m/W± 3dB/m/W

Bluetooth

Bluetooth Version	V2.1 + EDR
Bluetooth profile	A2DP
Bluetooth Frequency Band	2.4GHz ~ 2.48GHz
Bluetooth Range	10 m (Free space)

7 Troubleshooting



Warning

- Never remove the casing of this device.

To keep the warranty valid, never try to repair the system yourself.

If you encounter problems when using this device, check the following points before requesting service. If the problem remains unsolved, go to the Philips Web page (www.philips.com/support). When you contact Philips, make sure that the device is nearby and the model number and serial number are available.

General

No power

- Recharge your speaker.

No sound

- Adjust volume on the connected device.
- When you listen to audio through Bluetooth, make sure that no audio input cable is connected to the **AUDIO IN** socket.
- Make sure that your Bluetooth device is within the effective operational range.

No response from the speaker

- Recharge the speaker.

About Bluetooth device

The audio quality is poor after connection with a Bluetooth-enabled device.

- The Bluetooth reception is poor: Move the device closer to this product or remove any obstacle between them.

Fail to find [Philips BT50] on your device for pairing.

- Press and hold **PAIRING** for more than three seconds, and then try again.

Cannot connect with the device.

- The Bluetooth function of the device is not enabled. Refer to the user manual of the device for how to enable the function.
- This product is already connected with another Bluetooth-enabled device. Disconnect that device and then try again.

The paired device connects and disconnects constantly.

- The Bluetooth reception is poor: Move the device closer to this product or remove any obstacle between them.
- For some devices, Bluetooth connection may be deactivated automatically as a power-saving feature. This does not indicate any malfunction of this product.

8 Notice

Any changes or modifications made to this device that are not expressly approved by WOOX Innovations may void the user's authority to operate the equipment.

Notice for the USA and Canada

This device complies with Part 15 of the FCC Rules and license-exempt RSS standard of Industry Canada. Operation is subject to the following two conditions:

- 1 this device may not cause harmful interference, and
- 2 this device must accept any interference received, including interference that may cause undesired operation.

This equipment has been tested and found to comply with the limits for a Class B digital device, pursuant to part 15 of the FCC Rules.

These limits are designed to provide reasonable protection against harmful interference in a residential installation. This equipment generates, uses, and can radiate radio frequency energy and, if not installed and used in accordance with the instruction manual, may cause harmful interference to radio communications. However, there is no guarantee that interference will not occur in a particular installation. If this equipment does cause harmful interference to radio or television reception, which can be determined by turning the equipment off and on, the user is encouraged to try to correct the interference by one or more of the following measures:

- Relocate the receiving antenna.
- Increase the separation between equipment and receiver.
- Connect the equipment into an outlet on a circuit different from that to which the receiver is connected.
- Consult the dealer or an experienced radio/TV technician for help.

RF Radiation Exposure Statement: This equipment complies with FCC's and IC's RF

radiation exposure limits set forth for an uncontrolled environment. The antenna(s) used for this transmitter must be installed and operated to provide a separation distance of at least 20 cm from all persons and must not be collocated or operating in conjunction with any other antenna or transmitter. Installers must ensure that 20cm separation distance will be maintained between the device (excluding its handset) and users.

CAN ICES-3(B)/NMB-3(B)

Care of the environment

Disposal of your old product and battery



Your product is designed and manufactured with high quality materials and components, which can be recycled and reused.

This product may contain lead and mercury. Disposal of these materials may be regulated due to environmental considerations. For disposal or recycling information, please contact your local authorities or visit www.recycle.philips.com.

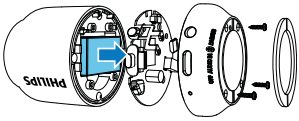
This product contains non-removable batteries:

- Do not incinerate. Batteries may explode if overheated.
- For disposal or recycling information, please contact your local authorities or visit www.recycle.philips.com.

Caution

- Removal of the built-in battery invalidates the warranty and may destroy the product.

Always bring your product to a professional to remove the built-in battery.



Environmental information

All unnecessary packaging has been omitted. We have tried to make the packaging easy to separate into three materials: cardboard (box), polystyrene foam (buffer) and polyethylene (bags, protective foam sheet.)

Your system consists of materials which can be recycled and reused if disassembled by a specialized company. Please observe the local regulations regarding the disposal of packaging materials, exhausted batteries and old equipment.

Trademark notice

Bluetooth

The Bluetooth® word mark and logos are registered trademarks owned by Bluetooth SIG, Inc. and any use of such marks by WOOX Innovations is under license.



2015 © WOOX Innovations Limited. All rights reserved.

Philips and the Philips' Shield Emblem are registered trademarks of Koninklijke Philips N.V. and are used by WOOX Innovations Limited under license from Koninklijke Philips N.V.

000000000000

