

OKAX9

User manual

ONKYO

Contents

1 Important	2
Hearing safety	2

2 Your Bluetooth speaker	3
Introduction	3
What's in the box	3
Overview of the speaker	4

3 Get started	5
Power supply	5
Switch on or go to standby mode	5

4 Use Bluetooth devices	6
Connect a Bluetooth-enabled device	6
Play from a Bluetooth-enabled device	7
Control your phone call	7

5 Other features	8
Listen to an external device	8
Play through USB	8
Adjust volume	9
Listen through a headphone	9

6 Product information	10
Specifications	10

7 Troubleshooting	11
General	11

8 Notice	12
-----------------	-----------

1 Important



Warning

- Never remove the casing of this speaker.
 - Never lubricate any part of this speaker.
 - Never place this speaker on other electrical equipment.
 - Keep this speaker away from direct sunlight, naked flames or heat.
-
- Make sure that there is enough free space around the device for ventilation.
 - Use only power supplies listed in the user manual.
 - Only use attachments or accessories specified by the manufacturer.
 - The battery shall not be exposed to excessive heat such as sunshine, fire or the like.
 - The device shall not be exposed to dripping or splashing.
 - Do not place any sources of danger on the device (e.g. liquid filled objects, lighted candles).
 - Where the plug of the Direct Plug-in Adapter is used as the disconnect device, the disconnect device shall remain readily operable.

- Do not turn up the volume so high that you can't hear what's around you.
- You should use caution or temporarily discontinue use in potentially hazardous situations.
- Excessive sound pressure from earphones and headphones can cause hearing loss.



Note

- The type plate is located on the bottom of the product.

Hearing safety



Caution

- To avoid hearing damage, limit the time you use the headphones at high volume and set the volume to a safe level. The louder the volume, the shorter is the safe listening time.

Be sure to observe the following guidelines when using your headphones.

- Listen at reasonable volumes for reasonable periods of time.
- Be careful not to adjust the volume as your hearing adapts.

2 Your Bluetooth speaker

Thank you for purchasing an Onkyo product. Please read this manual carefully before making any connections or using this product. By following these instructions, you'll get the best audio performance and the most listening pleasure from your Onkyo product. Keep this manual for future reference.

Introduction

With this speaker, you can

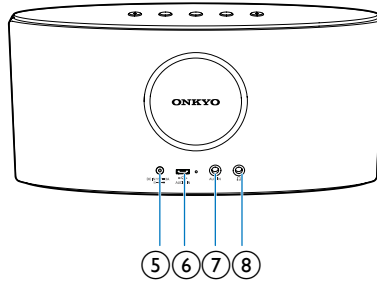
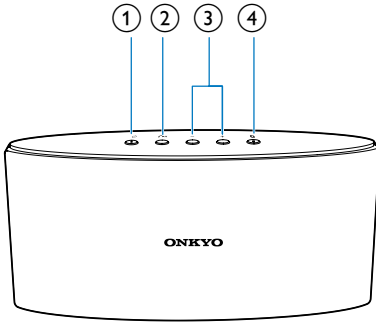
- enjoy audio from your Bluetooth-enabled devices, USB devices or other external audio devices; and
- control the incoming phone call through Bluetooth connection.

What's in the box

Check and identify the contents of your package:

- Main unit
- Power adapter
- 3.5mm audio cable
- USB cable
- Printed materials

Overview of the speaker



① button/indicator

- Press briefly to switch on or go to standby mode.
- In standby mode, press and hold to switch off.
- Indicate the power status.

②

- Start, pause, or resume play.
- Press to answer an incoming call.
- During a call, press to end the current call.

③

- Adjust volume.

④ button/indicator

- Press and hold for 2 seconds to enter pairing mode manually.
- Press and hold for 7 seconds to clear pairing information.
- Indicate the Bluetooth connection status.

⑤ DC IN socket

- Connect the power adapter.
- Charge the built-in battery of the speaker.

⑥ AUDIO IN socket

- Play an external audio device through USB.

⑦ AUX IN socket

- Connect an external audio device.

⑧

- Connect a headphone.

3 Get started

Always follow the instructions in this chapter in sequence.

Power supply

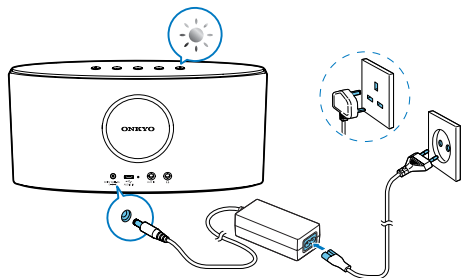
Either AC power or battery can be used as power supply of this product.

Option 1: AC power

! Caution

- Risk of product damage! Make sure that the power voltage corresponds to the voltage printed on the back or underside of the speaker.
- Risk of electric shock! When you unplug the AC adaptor, always pull the plug from the socket. Never pull the cord.

- Connect the power adaptor to:
 - the **DC IN** socket at the back of the speaker.
 - the wall outlet.



Option 2: Battery power

The speaker can also be powered by the built-in rechargeable battery.

☰ Note

- Rechargeable battery has a limited number of charge cycles. The battery life and number of charge cycles vary by use and settings.
- It takes you approximately three hours to fully charge the battery.

To charge the built-in battery:

- Connect to AC power supply.

System status	Battery status	Power LED status
On/off	Low power (less than 10%)	Flashing red
On	Under charging	Flashing white
On	Fully charged	Solid white

Switch on or go to standby mode

- Press **⏻** to switch the speaker on.
 - ↳ If the speaker is fully charged, the power indicator turns solid white.
 - ↳ If the speaker is being charged, the power indicator flashes white.
 - ↳ If the speaker is in low battery (with less than 10% power), the power indicator flashes red.
- To enter standby mode, press **⏻** briefly.
 - ↳ The power indicator is dimmed in white.
- To switch off when the speaker is on or in standby mode, press and hold **⏻** for two seconds.
 - ↳ The power indicator turns off.

✦ Tip

- In Bluetooth mode, if Bluetooth connection is invalid or music playback is stopped for 15 minutes, this speaker switches to standby mode automatically.
- In AUX IN mode, if the audio-in cable is disconnected or music playback is stopped for 15 minutes, this speaker switches to standby mode automatically.

4 Use Bluetooth devices

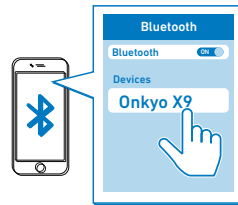
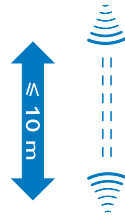
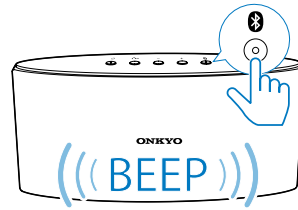
With this speaker, you can listen to audio from Bluetooth-enabled devices and control the incoming call through Bluetooth.


Connect a Bluetooth-enabled device

Note

- Make sure that your Bluetooth device is compatible with this speaker.
- Before pairing a device with this speaker, read its user manual for Bluetooth compatibility.
- The speaker can memorize up to 8 paired devices.
- Make sure that Bluetooth function is enabled on your device, and your device is set as visible to all other Bluetooth devices.
- Any obstacle between this speaker and a Bluetooth device can reduce the operational range.
- Keep away from any other electronic device that may cause interference.
- The operational range between this speaker and a Bluetooth device is approximately 10 meters (30 feet).

The speaker can connect up to 2 Bluetooth-enabled devices at the same time.



- 1 Press and hold  on the speaker for two seconds.
↳ The Bluetooth indicator flashes blue.
- 2 On your Bluetooth device, enable Bluetooth and search for Bluetooth devices (refer to the user manual of the device).
- 3 When **[Onkyo X9]** is displayed on your device, select it to start pairing and connection. If necessary, enter the default password "0000".
↳ After successful pairing and connection, the speaker beeps twice, and the Bluetooth indicator turns solid blue.
- 4 Repeat steps 1 to 3 to add a second Bluetooth device.

Note

- When there are two Bluetooth-enabled devices connected to the speaker, you can repeat steps 1 to 3 to add a new device. In this case, the earliest connected device will be replaced.

To disconnect the Bluetooth-enabled device:

- Disable Bluetooth on your device; or
- Move the device beyond the communication range.

To clear the existing pairing information:

- Press and hold **Ⓚ** for 7 seconds.

To reconnect the Bluetooth-enabled device:

- For a paired Bluetooth device on which automatic reconnection is enabled, this product reconnects with it once it is detected.
- For a paired Bluetooth device that does not support automatic reconnection, reconnect it with this product manually.

Bluetooth indicator	Description
Flashing blue	Connecting or waiting for connection
Solid blue	Connected

Play from a Bluetooth-enabled device

Note

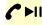
- If there is an incoming call on the connected mobile phone, music play pauses.
- After successful Bluetooth connection, play music on a connected Bluetooth device.
 - ↳ Music streams from your Bluetooth device to the speaker.

Note

- To play from another connected device, just use controls on that device directly and the music streaming from the current device will be paused.

Control your phone call

After Bluetooth connection, you can control an incoming call with this speaker:

Button	Function
	Press to answer an incoming call.
	During a call, press to end the current phone call.

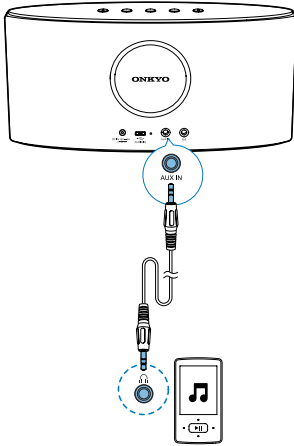
Note

- You can talk through the microphone of the speaker.
- Music play pauses when there is an incoming call, and resumes when your phone call ends.

5 Other features

Listen to an external device

With this speaker, you can also listen to an external audio device such as an MP3 player.



- 1 Make sure there is no music streaming from the connected Bluetooth device (if available).
- 2 Connect an audio input cable with a 3.5 mm connector on both ends to
 - the **AUX IN** socket on this speaker; and
 - the headphone socket on the external device.
- 3 Play music on the external device (refer to its user manual).
↳ The speaker switches to the AUX IN source.

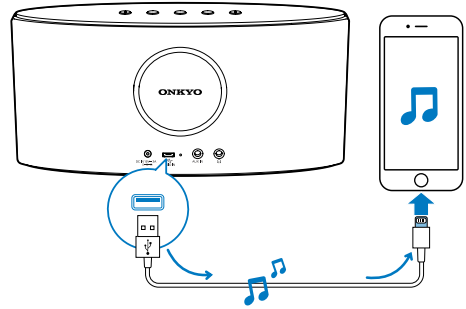
Tip

- When you start music streaming from a connected Bluetooth device, the speaker switches to the Bluetooth source automatically.

Play through USB

Note

- Make sure that the USB device contains playable audio content.

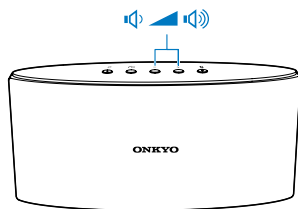


- 1 Make sure there is no music streaming from the connected Bluetooth device (if available).
- 2 Connect a USB charging cable to
 - the **AUDIO IN** socket on this speaker; and
 - the USB socket on your mobile phone.
- 3 Play music on your mobile phone (refer to its user manual).
↳ The speaker switches to the USB source.

Note


- When you start music streaming from a connected Bluetooth device, the speaker switches to the Bluetooth source automatically.

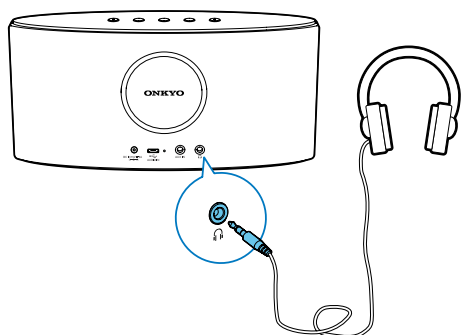
Adjust volume



- Press +/- on the speaker to increase or decrease the volume.

Listen through a headphone

- Plug a headphone (not supplied) into the  socket.



6 Product information



Note

- Product information is subject to change without prior notice.

Built-in Battery	Lithium ion battery (11.1V,2200 mAh)
Dimensions - Main Unit (W x H x D)	195 x 93 x 51 mm
Weight - Main Unit	0.6 kg

Specifications

Amplifier

Rated Output Power	4 x 10W, 1% THD
Frequency Response	40 Hz - 20 kHz, ± 3 dB
Signal to Noise Ratio	> 80 dBA
Aux In	650mV (RMS), 22k ohm

Bluetooth

Bluetooth version	V2.1
Supported Profiles	HFP, A2DP, AVRCP
Range	10 m (Free space)

Speakers

Speaker Impedance	4 ohm
Speaker Driver	4 x 2" mid range drivers, 2 x 3/4" high freq tweeter
Sensitivity	> 82dB/m/W \pm 3dB/m/W

General information

Power Adaptor	; : D() %85!%)' \$!% (: A 9L
Power Input	100 - 240V, 50/60 Hz
DC Output	15V \equiv 3A

7 Troubleshooting



Warning

- Never remove the casing of this device.

To keep the warranty valid, never try to repair the system yourself.

If you encounter problems when using this device, check the following points before requesting service. If the problem remains unsolved, contact Onkyo service center. When you contact Onkyo, make sure that the device is nearby and the model number and serial number are available.

General

No power

- Make sure that the AC power plug is connected properly.
- Make sure that there is power at the AC outlet.
- Recharge the built-in battery.

No sound

- Adjust volume on the speaker or the Bluetooth-connected device.
- Make sure that your Bluetooth device is within the effective operational range.

No response from the speaker

- Restart the speaker.

About Bluetooth device

The audio quality is poor after connection with a Bluetooth-enabled device.

- The Bluetooth reception is poor. Move the device closer to this speaker or remove any obstacle between them.

Cannot connect with the device.

- The Bluetooth function of the device is not enabled. Refer to the user manual of the device for how to enable the function.

- The speaker is not in pairing mode. Hold **Ⓚ** to enter pairing mode, and then try again.

The paired device connects and disconnects constantly.

- The Bluetooth reception is poor. Move the device closer to this product or remove any obstacle between them.
- For some devices, Bluetooth connection may be deactivated automatically as a power-saving feature. This does not indicate any malfunction of this speaker.

The speaker is in demo mode and not working as usual.

- The demo mode is not intended for end users. You may have activated this mode by accident. In this case, press and hold **Ⓚ** for 15 seconds to exit demo mode and enter standby mode. Then you can power on and operate the speaker as usual.

8 Notice

Any changes or modifications made to this device that are not expressly approved by Gibson Innovations may void the user's authority to operate the equipment.

Notice for the USA and Canada

This device complies with Industry Canada **license-exempt** RSS standard(s) and Part 15 of the FCC Rules.

Operation is subject to the following two conditions:

- 1 this device may not cause harmful interference, and
- 2 this device must accept any interference received, including interference that may cause undesired operation.

This equipment has been tested and found to comply with the limits for a Class B digital device, pursuant to part 15 of the FCC Rules and CAN ICES-3(B)/NMB-3(B) of Industry Canada. These limits are designed to provide reasonable protection against harmful interference in a residential installation. This equipment generates, uses, and can radiate radio frequency energy and, if not installed and used in accordance with the instruction manual, may cause harmful interference to radio communications.

However, there is no guarantee that interference will not occur in a particular installation. If this equipment does cause harmful interference to radio or television reception, which can be determined by turning the equipment off and on, the user is encouraged to try to correct the interference by one or more of the following measures:

- Relocate the receiving antenna.
- Increase the separation between equipment and receiver.
- Connect the equipment into an outlet on a circuit different from that to which the receiver is connected.
- Consult the dealer or an experienced radio/TV technician for help.

RF Radiation Exposure Statement: This equipment complies with FCC's and IC's RF radiation exposure limits set forth for an uncontrolled environment. The antenna(s) used for this transmitter must be installed and operated to provide a separation distance of at least 20 cm from all persons and must not be collocated or operating in conjunction with any other antenna or transmitter. Installers must ensure that 20cm separation distance will be maintained between the device (excluding its handset) and users.

CAN ICES-3(B)/NMB-3(B).

Le présent appareil est conforme aux CNR d'Industrie Canada applicables aux appareils radio exempts de licence. L'exploitation est autorisée aux deux conditions suivantes : (1) l'appareil ne doit pas produire de brouillage, et (2) l'utilisateur de l'appareil doit accepter tout brouillage radioélectrique subi, même si le brouillage est susceptible d'en compromettre le fonctionnement.

Disposal of your old product

Your product is designed and manufactured with high quality materials and components, which can be recycled and reused.



This product may contain lead and mercury. Disposal of these materials may be regulated due to environmental considerations. For disposal or recycling information, please contact your local authorities or visit www.recycle.philips.com.