

# Always there to help you

Register your product and get support at  
[www.philips.com/support](http://www.philips.com/support)



TX2BT



## User manual

# PHILIPS



# Contents

---

<b>1</b>	<b>Important safety instructions</b>	<b>2</b>
	Hearing Safety	2
	General information	2

---

<b>2</b>	<b>Your Bluetooth in-ear headphones</b>	<b>3</b>
	What's in the box	3
	Other devices	3
	Overview of your Bluetooth in-ear headphones	3

---

<b>3</b>	<b>Get started</b>	<b>4</b>
	Charge your headphones	4
	Pair the headphones with your mobile phone	4

---

<b>4</b>	<b>Use your headphones</b>	<b>6</b>
	Connect the headphones to a Bluetooth device	6
	Manage your calls and music	6
	Share your music	7

---

<b>5</b>	<b>Technical data</b>	<b>8</b>
----------	-----------------------	----------

---

<b>6</b>	<b>Notice</b>	<b>9</b>
	Notice of compliance	9
	Disposal of your old product and battery	9
	Trademarks	10

---

<b>7</b>	<b>Frequently asked questions</b>	<b>11</b>
----------	-----------------------------------	-----------

# 1 Important safety instructions

## Hearing Safety



### Danger

- To avoid hearing damage, limit the time you use headphones at high volume and set the volume to a safe level. The louder the volume, the shorter the safe listening time is.

### Be sure to observe the following guidelines when using your headset.

- Listen at reasonable volumes for reasonable periods of time.
- Be careful not to adjust the volume continuously upwards as your hearing adapts.
- Do not turn up the volume so high that you can't hear what's around you.
- You should use caution or temporarily discontinue use in potentially hazardous situations.
- Excessive sound pressure from earphones and headphones can cause hearing loss.
- Using headphones with both ears covered while driving is not recommended and may be illegal in some areas while driving.
- For your safety, avoid distractions from music or phone calls while in traffic or other potentially dangerous environments.

## General information

To avoid damage or malfunction:

### Caution

- Do not expose headphones to excessive heat.
- Do not drop your headphones.
- Headphones shall not be exposed to dripping or splashing.
- Do not allow your headphones to be submerged in water.
- Do not use any cleaning agents containing alcohol, ammonia, benzene, or abrasives.
- If cleaning is required use a soft cloth, if necessary dampened with a minimum amount of water or diluted mild soap, to clean the product.
- The integrated battery shall not be exposed to excessive heat such as sunshine, fire or the like.
- Danger of explosion if battery is incorrectly replaced. Replace only with the same or equivalent type.

### About operating and storage temperatures and humidity

- Operate or store in a place where temperature is between -15°C (5°F) and 55°C (131°F) (up to 90% relative humidity).
- Battery life may be shorter in high or low temperature conditions.

# 2 Your Bluetooth in-ear headphones



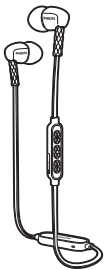
Quick start guide

Congratulations on your purchase, and welcome to Philips! To fully benefit from the support that Philips offers, register your product at [www.philips.com/welcome](http://www.philips.com/welcome).

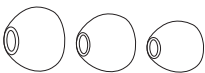
With this Philips wireless in-ear headphones, you can:

- enjoy convenient wireless handsfree calls;
- enjoy and control wireless music;
- switch between calls and music.

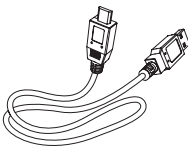
## What's in the box



Philips Bluetooth in-ear headphones TX2BT



Replaceable rubber ear caps

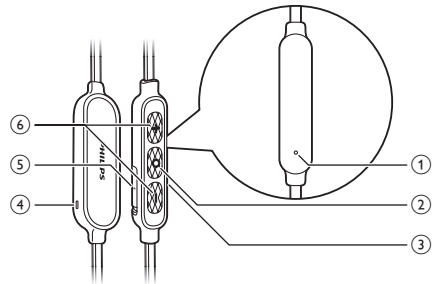


USB charging cable (for charging only)

## Other devices

A mobile phone or device (e.g. notebook, PDA, Bluetooth adapters, MP3 players etc) which supports Bluetooth and is compatible to the headphones (see 'Technical data' on page 8).

## Overview of your Bluetooth in-ear headphones



- ① Microphone
- ② On/off, music/call control button
- ③ NFC detection area
- ④ LED indicator
- ⑤ Micro USB charging slot
- ⑥ Volume/Track control button

## 3 Get started

### Charge your headphones

#### Note

- Before you use your headphones for the first time, charge the battery for 5 hours for optimum battery capacity and lifetime.
- Use only the original USB charging cable to avoid any damage.
- Finish your call before charging the headphones, as connecting the headphones for charging will power the headphones off.
- You can operate the headphones normally during charging.

Connect the supplied USB charging cable to:

- the micro USB charging slot on the headphones and;
  - the charger/USB port of a computer.
- ↳ LED turns white during charging and turns off when the headphones is fully charged.

#### Tip

- Normally, a full charge takes 2 hours.

### Pair the headphones with your mobile phone

Before you use the headphones with your mobile phone for the first time, pair it with a mobile phone. A successful pairing establishes a unique encrypted link between the headphones and mobile phone. The headphones store the last 4 devices in the memory. If you try to pair more than 4 devices, the earliest paired device is replaced by the new one.

There are two ways to pair your headphones with your mobile phone:

- Manual pairing
- NFC pairing

#### Manual pairing

- 1 Make sure that the headphones are fully charged and turned off.
- 2 Press and hold the on/off button until the blue and white LED flashes alternately.  
↳ The headphones remain in pairing mode for 5 minutes.
- 3 Make sure that the mobile phone is turned on and its Bluetooth feature is activated.
- 4 Pair the headphones with the mobile phone. For detailed information, refer to the user manual of your mobile phone.

#### NFC pairing

- 1 Make sure your headphones are turned on.
- 2 Make sure you turn on the NFC function on your phone and your phone's screen remains active.
- 3 Place your phone over the headset so that the NFC detection area of each device can touch each other.
- 4 Pair the headphones with the mobile phone. For detailed information, refer to the user manual of your mobile phone.

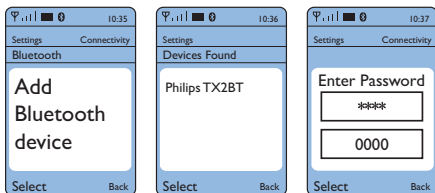
#### Note

- Make sure your mobile phone has the NFC feature available and switched on.
- Make sure your mobile phone is not in standby mode.
- Pairing with NFC is only suitable for Android mobile operating system 4.2 or above.
- Refer to the user manual of your mobile phone to identify its NFC detection area.

The following example shows you how to pair the headphones with your mobile phone.

- 1 Activate the Bluetooth feature of your mobile phone, select Philips TX2BT.

- 2 Enter the headset password "0000" (4 zeros) if prompted. For those mobile phones featuring Bluetooth 3.0 or higher, no need to enter a password.



# 4 Use your headphones

## Connect the headphones to a Bluetooth device

- 1 Turn on your mobile phone/Bluetooth device.
- 2 Press and hold the on/off button to turn the headphones on.
  - ↳ The blue LED flashes.
  - ↳ The headphones are reconnected to the last connected mobile phone/Bluetooth device automatically. If the last one is not available, the headphones try to reconnect to the second last connected device.



### Tip

- If you turn on the mobile phone/Bluetooth device or activate the Bluetooth feature after turning on the headphones, you have to reconnect the headphones and mobile phone/Bluetooth device manually.



### Note

- If the headphones fail to connect to any Bluetooth device within range in 5 minutes, it will switch off automatically to save the battery life.

## Manage your calls and music

### On/off

Task	Button	Operation
Turn the headphones on.	Music/call control	Press and hold for 2 seconds.

Turn the headphones off.	Music/call control	Press and hold for 4 seconds. ↳ The white LED is on and fades out.
--------------------------	--------------------	---

### Music control

Task	Button	Operation
Play or pause music.	Music/call control	Press once.
Adjust volume.	+/-	Press once.
Skip forward.	+	Long press.
Skip backward.	-	Long press.

### Call control

Task	Button	Operation
Pick up/hang up a call.	Music/call control	Press once. ↳ 1 beep.
Reject an incoming call.	Music/call control	Press and hold for 2 seconds. ↳ 1 long beep.
Switch caller during a call.	Music/call control	Press twice. ↳ 1 beep.
Mute/unmute the microphone in a call.	+and -	Press once. ↳ 1 beep.

### Other headphones indicator status

Headphones status	Indicator
The headphones are connected to a Bluetooth device, while the headphones in standby mode or while you are listening to music.	The blue LED flashes for every 8 seconds.
The headphones are ready for pairing.	The LED flashes blue and white alternately.



The headphones are on but not connected to a Bluetooth device.	The blue LED flashes quickly. If no connection can be made, the headphones will turn itself off within 5 minutes.
Low battery level.	The white LED flashes 3 times for every 10 seconds until it is out of power.
Battery is fully charged.	White LED is off.

## Share your music

With **MusicChain™**, you can create a series of songs and share music between two same headphones.

Headphones A	Headphones B
Connect to mobile phone A.	Connect to mobile phone B and place it near headphones A.

Start sharing music to headphone B.

- 1 Double-click the music/call button.
  - ↳ You hear 2 beeps.
  - ↳ The blue and white light flashes alternately.
- 2 Wait for the connection with headphone B.
  - ↳ You will hear **"Pairing, please wait."** Waiting time varies from 15 to 60 seconds.

Start sharing music from headphone A.

- 1 Click the music/call button for 3 times.
  - ↳ You hear 3 beeps.
  - ↳ The blue, white and off light flashes alternately.
- 2 Wait for the connection with headphone A. It may take 1 minute, or the connection timeout will occur after 1 minute.
  - ↳ You will hear **"Pairing, please wait."** Waiting time varies from 15 to 60 seconds.

To disconnect from headphone B, double click the music/call button.

To disconnect from headphone A, double click the music/call button.



### Tip

- Waiting time for music sharing may vary from 15 to 60 seconds.
- Make sure you place headphones A close to headphones B in order to have a better the connection process and duration.
- During music chain mode, if headphones B are connected to mobile B, you can share music from mobile phone B after you stop music playing at mobile phone A.

# 5 Technical data

- Up to 7.5 hours of music time or 6 hours of talk time
- Up to 170 hours of standby time
- Normal time for a full charge: 2 hours
- Rechargeable lithium polymer battery (125 mAh)
- Bluetooth 4.1, Bluetooth mono support (Headset Profile - HSP, Hands-Free Profile - HFP), Bluetooth stereo supported (Advanced Audio Distribution Profile - A2DP; Audio Video Remote Control Profile - AVRCP)
- Operating range: Up to 10 meters (33 feet)
- Digital echo & noise reduction
- Auto power off



## Note

- Specifications are subject to change without notice.

# 6 Notice

---

## Notice of compliance

### Notice for US

This set complies with the FCC rules, Part 15 and with 21 CFR 1040.10. Operation is subject to the following two conditions:

- ① **This device may not cause harmful interference, and**
- ② **This device must accept any interference received, including interference that may cause undesired operation.**

### FCC rules

This equipment has been tested and found to comply with the limits for a Class B digital device, pursuant to part 15 of the FCC Rules. These limits are designed to provide reasonable protection against harmful interference in a residential installation. This equipment generates, uses and can radiate radio frequency energy and, if not installed and used in accordance with the instruction manual, may cause harmful interference to radio communications. However, there is no guarantee that interference will not occur in a particular installation. If this equipment does cause harmful interference to radio or television reception, which can be determined by turning the equipment off and on, the user is encouraged to try to correct the interference by one or more of the following measures:

- Relocate the receiving antenna.
- Increase the separation between equipment and receiver.
- Connect the equipment into an outlet on a circuit different from that to which the receiver is connected.
- Consult the dealer or an experienced radio/TV technician for help.

### FCC Radiation Exposure Statement:

This equipment complies with FCC radiation exposure limits set forth for an uncontrolled

environment. This equipment should be installed and operated with a minimum distance of 20cm between the radiator and your body. This transmitter must not be co-located or operated in conjunction with any other antenna or transmitter.

**Warning:** Changes or modifications made to this equipment not expressly approved by Gibson Innovations may void the FCC authorization to operate this equipment. Model number: TX2BT

Trade Name: Philips

Responsible party: Gibson Innovations USA Inc. 3070 Windward Plaza Suite F, Box 735 Alpharetta, GA 30005

### Notice for Canada:

This device complies with Industry Canada licence-exempt RSS standard(s). Operation is subject to the following two conditions: (1) this device may not cause harmful interference, and (2) this device must accept any interference received, including interference that may cause undesired operation.

This Class B digital apparatus complies with Canadian ICES-003.

### IC Radiation Exposure Statement:

This equipment complies with Canada radiation exposure limits set forth for uncontrolled environments.

This transmitter must not be co-located or operating in conjunction with any other antenna or transmitter.

---

## Disposal of your old product and battery



Your product is designed and manufactured with high quality materials and components, which can be recycled and reused.

This product may contain lead and mercury. Disposal of these materials may be regulated due to environmental considerations. For disposal or recycling information, please contact

your local authorities or visit [www.recycle.philips.com](http://www.recycle.philips.com).

This product contains non-removable batteries:

- Do not incinerate. Batteries may explode if overheated.
- For disposal or recycling information, please contact your local authorities or visit [www.recycle.philips.com](http://www.recycle.philips.com).

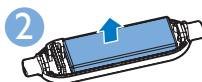
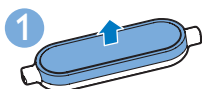
---

## Remove the integrated battery

### Note

- Make sure the headset is disconnected from the USB charging cable before removing the battery.

If there is no collection/recycling system for electronic products in your country, you can protect the environment by removing and recycling the battery before disposing the headset.



### Environmental information

All unnecessary packaging has been omitted. We have tried to make the packaging easy to separate into three materials: cardboard (box), polystyrene foam (buffer) and polyethylene (bags, protective foam sheet.)

Your system consists of materials which can be recycled and reused if disassembled by a specialized company. Please observe the local regulations regarding the disposal of packaging materials, exhausted batteries and old equipment.

---

## Trademarks

---

### Bluetooth

The Bluetooth word mark and logos are owned by the Bluetooth SIG, Inc. and any use of such marks by Gibson Innovations is under license.

# 7 Frequently asked questions

## **My Bluetooth headphones do not switch on.**

The battery level is low. Charge the headphones.

## **I cannot pair my Bluetooth headphones with a mobile phone.**

The Bluetooth is disabled. Enable the Bluetooth feature on your mobile phone and turn on the mobile phone before you turn on the headphones.

## **Pairing does not work.**

Make sure the headphones are in pairing mode.

- Follow the steps described in this user manual (see 'Pair the headphones with your mobile phone' on page 4).
- Make sure that the LED light flashes blue and white alternately before you release the call/music button. Do not stop holding the button if you see the blue LED only.

## **The mobile phone cannot find the headphones.**

- The headphones may be connected to a previously paired device. Turn off the connected device or move it out of range.
- Pairing may have been reset or the headphones have been previously paired with another device. Pair the headphones with the mobile phone again as described in the user manual (see 'Pair the headphones with your mobile phone' on page 4).

## **My Bluetooth headphones are connected to a Bluetooth stereo enabled mobile phone, but music only plays on the mobile phone speaker.**

Refer to the user manual of your mobile phone. Select to listen to music through the headphones.

## **The audio quality is poor and crackling noise can be heard.**

The Bluetooth device is out of range. Reduce the distance between your headphones and Bluetooth device, or remove obstacles between them.

## **The audio quality is poor when streaming from the mobile phone is very slow, or audio streaming does not work at all.**

Make sure your mobile phone not only supports (mono) HSP/HFP but also supports A2DP (see 'Technical data' on page 8).

## **I hear but cannot control music on my Bluetooth device (e.g. play/pause/skip forward/backward).**

Make sure the Bluetooth audio source supports AVRCP (see 'Technical data' on page 8).

**For further support, visit [www.philips.com/support](http://www.philips.com/support).**



2015 © Gibson Innovations Limited. All rights reserved.

This product has been manufactured by, and is sold under the responsibility of Gibson Innovations Ltd., and Gibson Innovations Ltd. is the warrantor in relation to this product.

Philips and the Philips' Shield Emblem are registered trademarks of Koninklijke Philips N.V. and are used under license from Koninklijke Philips N.V.



**English:**

## **Notice of compliance**

The device complies with the FCC rules, Part 15. Operation is subject to the following two conditions:

1. This device may not cause harmful interference, and
2. This device must accept any interference received, including interference that may cause undesired operation.

### **FCC rules**

This equipment has been tested and found to comply with the limits for a Class B digital device, pursuant to part 15 of the FCC Rules. These limits are designed to provide reasonable protection against harmful interference in a residential installation. This equipment generates, uses and can radiate radio frequency energy and, if not installed and used in accordance with the instruction manual, may cause harmful interference to radio communications.

However, there is no guarantee that interference will not occur in a particular installation. If this equipment does cause harmful interference to radio or television reception, which can be determined by turning the equipment off and on, the user is encouraged to try to correct the interference by one or more of the following measures:

- Relocate the receiving antenna.
- Increase the separation between equipment and receiver.
- Connect the equipment into an outlet on a circuit different from that to which the receiver is connected.
- Consult the dealer or an experienced radio/TV technician for help.

### **FCC Radiation Exposure Statement:**

This equipment complies with FCC radiation exposure limits set forth for an uncontrolled environment.

This transmitter must not be co-located or operating in conjunction with any other antenna or transmitter.

### **Canada:**

This device complies with Industry Canada licence-exempt RSS standard(s). Operation is subject to the following Two conditions: (1) this device may not cause harmful interference, and (2) this device must accept any interference received, including interference that may cause undesired operation.

CAN ICES-3(B)/NMB-3(B)

### **IC Radiation Exposure Statement:**

This equipment complies with Canada radiation exposure limits set forth for uncontrolled environments.

This transmitter must not be co-located or operating in conjunction with any other antenna or transmitter.

Caution: The user is cautioned that changes or modifications not expressly approved by the party responsible for compliance could void the user's authority to operate the equipment.

## **French:**

### **Avis de conformité**

Cet appareil satisfait aux règlements de la FCC partie 15 du Code of Federal Regulations. Son fonctionnement est assujéti aux deux conditions suivantes :

1. Cet appareil ne doit pas causer d'interférence préjudiciable et
2. l'appareil doit accepter toute interférence reçue, y compris les interférences qui peuvent causer un fonctionnement non désiré.

#### **Règlement de la FCC**

Cet équipement a été testé et jugé compatible avec les limites s'appliquant aux appareils numériques de la classe B, conformément à l'article 15 du règlement de la FCC. Ces limites ont été définies pour fournir une protection raisonnable contre les interférences nuisibles dans le cadre d'une installation résidentielle. Cet équipement génère, utilise et peut émettre de l'énergie radiofréquence et, s'il n'est pas installé ni utilisé conformément aux instructions, peut causer des interférences gênantes pour les communications radio.

Rien ne garantit toutefois que des interférences ne surviendront pas dans une installation particulière. Si cet équipement cause des interférences nuisibles pour la réception de la radio ou de la télévision, ce qui peut être déterminé en mettant l'équipement hors tension puis sous tension, l'utilisateur devra essayer de corriger ces interférences en effectuant une ou plusieurs des opérations suivantes :

Déplacez l'antenne de réception.

Augmentez la distance entre l'équipement et le récepteur.

Branchez l'équipement à une prise d'un circuit autre que celui sur lequel le récepteur est branché.

Consultez le détaillant ou un technicien de radiotélévision expérimenté.

#### **Canada :**

Le présent appareil est conforme aux CNR d'Industrie Canada applicables aux appareils radio exempts de licence. L'exploitation est autorisée aux deux conditions suivantes : (1) l'appareil ne doit pas produire de brouillage, et (2) l'utilisateur de l'appareil doit accepter tout brouillage radioélectrique subi, même si le brouillage est susceptible d'en compromettre le fonctionnement.

CAN ICES-3(B)/NMB-3(B)

#### **Déclaration d'IC sur l'exposition aux radiations:**

Cet équipement est conforme aux limites d'exposition aux radiations définies par le Canada pour des environnements non contrôlés.

Cet émetteur ne doit pas être installé au même endroit ni utilisé avec une autre antenne ou un autre émetteur.