

User's Manual

[SU-400]

SUPER HIGH SPEED INTERNET



<http://www.glgallink.co.kr>

Sharp and dynamical image of T-LAN SU-400 goes well together with Desktop PC. Also, as SU-400 allows as little as DC 5V at 3W, you don't have to worry about the electric utility bill. For your convenience, every part of the equipment comes with the printed indications and LED lamp which allow you to know of every status of the transmission.

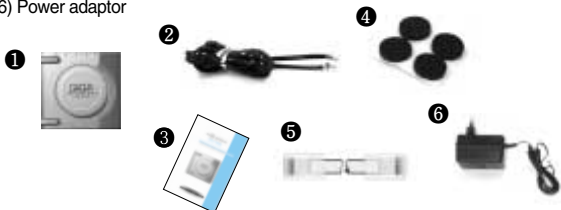
Additionally, T-LAN SU-400 adopts 2wire solution enabling simple and easy connection to the bridge at subscriber premises.

※ When not using the SU-400, Please turn the power off.

[How to Install]

1. Check the Package Contents

- (1) SU-400
- (2) RJ-11 to RJ-11 cables (2EA)
- (3) User's manual
- (4) Slip-free Rubber pads
- (5) RJ-45 to RJ-45 cables
- (6) Power adaptor



2. Product design and specifications

1) Front view



- Power light will turn on if all the connections are made.

- LINK light turns on if there is no problem with the connection.
- LAN light turns on if the connection is made correctly with the LAN card on the PC.
- RX light will engage when user is receiving data.
- TX light will engage when user is sending data.

2) Rear view



- On/off : SU-400 power on/off switch.
- Power : Adaptor Connection, DC 5V adaptor.
- Line : Links SU-400 and phone wall outlet with RJ-11 line.
- Phone: You may simply connect SU-400 to the phone with the phone cable provided here.
- LAN : Install LAN card into the PC for your data transmission.

3) Specifications

Classification	Specification	Remarks
Transmission speed	2 Mbps	
Telephone circuit interface	RJ-11 X 2	One to connect to the phone outlet and the other with the phone
LAN interface	RJ-45	To connect to PC LAN card
Dimension Measurement	126 X 126 X 32 mm (width X depth X height)	
Weight	200 g	
Wire required	2-wire	
Power requirements	Power : DC 5V Power Consumption : 3W Current: 600mA	Free Voltage / DC 5V adaptor is Provided

* T-LAN complies with the standard regulations for telecommunications, electric safety, EMI and EMS set by the Wave Research Institute.

3. Installation

- 1) Adhere 4 slip-free rubber pads, here included, on to the 4 corners of SU-400 underneath.
- 2) Connect one end of RJ-11 to the phone outlet on the wall and the other end to the "LINE" socket.(Plug-in until you here the clicking sound)



RJ-11 to RJ-11 cables

- 3) Now, check to see if the "LINK" LED light is on. If so, connect SU-400 to the LAN card on the PC with UTP Straight cable.



- 4) Phone use
You may connect phone easily with the provided RJ-11 line.

4. Troubleshooting

- 1) If the "LINK" light LED of SU-400 is not lit on :
 - Check all the connections
 - If the signal seems weak or the interference is detected, a telephone line adaptor or brige adaptor may be needed.

- 2) If neither the telephone nor the data transmission activates, it is most likely to suspect that the line and phone terminal connection is switched. It needs to be checked whether the phone terminal is connected with the telephone and the line terminal with SU-400.

■ Warranty Filling-out Form

Model Name		T-LAN (SU-400)
Manufacturing date		
Warrant period		1 year
Customer	Name	
	Address	
Agency	Name	
	Address	

*Free-of-charge service is provided for any defect may caused on regular proper use of the equipment during above said warranty period

Warranty Period

1. T-LAN products are warranted from the date of shipment for the period of above said.
2. T-LAN products are warranted against defects in material and workmanship during above said warranty period.
3. The foregoing warranty shall not apply to defects resulting from
 - A. The factors other than the Gigalink equipment.
 - B. Abusing and unauthorized modification of Gigalink equipment.
 - C. The act of God such as natural disaster, fire, earthquake, flood, lightening or other natural calamities.
 - D. Moving or relocating Gigalink equipment after your
 - E. Moving or relocating Gigalink equipment after your purchase.
4. For warranty or repair, return this product to a service facility designated by re-seller in accordance with re-seller instructions.

■ Repair Requesting Form

Date :	
T-LAN Distributor :	Where was it purchased? :
Person in charge :	Person in charge :
Tel. No. :	Tel. No. :
Address :	Address :
Model Name :	Connection Layout :
Serial Number:	
Defect details :	
(Symptom)	(In detail)
(Remark)	

※ Please return any defected device, with a repair request form, within the time indicated on the warranty section.



GIGALINK Co., Ltd.

13th Fl., CBC Bldg., 826-20, Yoksam-dong, Gangnam-gu, Seoul, KOREA, 135-080

Tel: +82-2-3466-1300, Fax: +82-2-3466-1340

E-mail: overseas@gigalink.co.kr, junkim@gigalink.co.kr Web Site: <http://www.gigalink.co.kr>