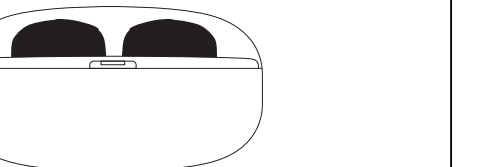


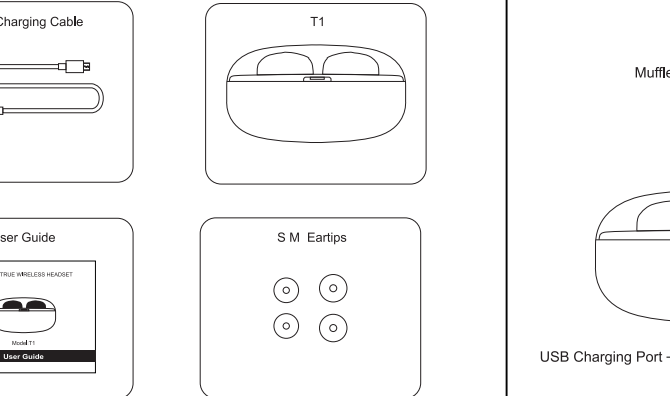
# Gigastone TRUE WIRELESS HEADSET



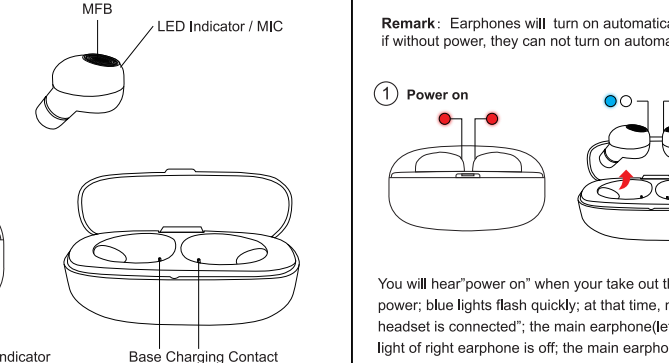
Model: T1

## User Guide

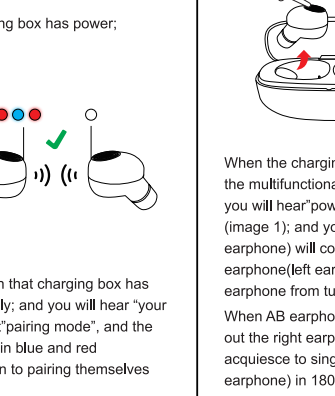
### 1 Package Contents



### 2 Product Overview



### 3 Operation instruction



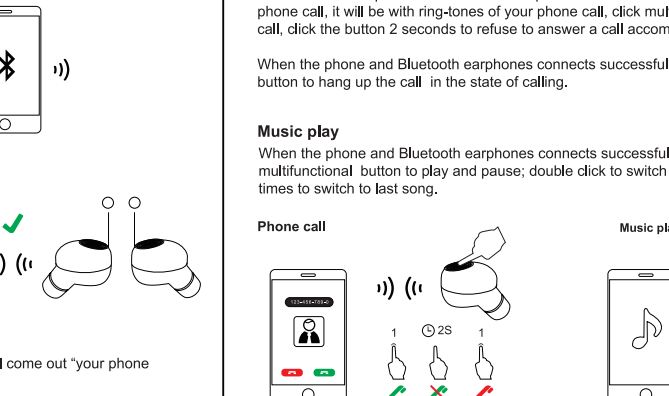
**Remark:** Earphones will turn on automatically on condition of charging box has power; if without power, they can not turn on automatically.

**1 Power on**  
You will hear "power on" when your take out the earphones on condition that charging box has power; blue lights flash quickly; at that time, make AB earphones closely; and you will hear "your headset is connected"; the main earphone(left earphone) flashes in blue and red alternately; It takes about 6-10 seconds of AB earphone from turning on to pairing themselves successfully.

**2**  
When the charging box is out of battery, the earphones need to be turned on by manually, press the multifunctional buttons 2-3seconds when take out the AB earphones from the charging box, you will hear "power on" and blue lights flash quickly; at that time, make AB earphones closely (image 1); and you will hear "connected", "left channel", "right channel"; the main earphone( left earphone) will come out"pairing", and the blue light of right earphone flashes quickly; the main earphone(left earphone) flashes in blue and red alternately; It takes about 6-10 seconds of AB earphone from turn on to pair themselves successfully.

When AB earphones are in charging box on condition that charging box has power; if you take out the right earphone, it will turn on automatically; the right earphone will be in pairing mode and acquiesce to single earphone using on condition that it doesn't pair with main earphone(left earphone) in 180s(this duration can be changed); the light flashes blue and red alternately.

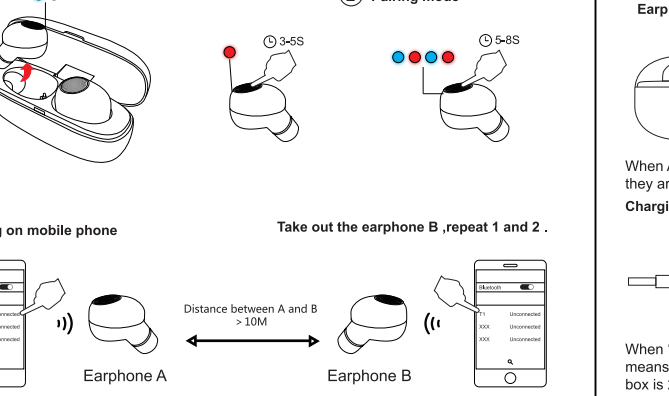
### 4 Use one earphone only



**1** Power off  
**2** Pairing mode

**Pairing on mobile phone**  
**Take out the earphone B ,repeat 1 and 2 .**

### 4 LED Status Indicators



**Earphone in charging**  
When AB earphones is in charging state in charging box, earphones red lights are on, when they are in full charged, the blue lights are on, they will be off after one minute.

**Earphone Full-charged**  
When 'T1's charging box is in charging state, the red light of charging box flashes one time means the capacity of charging box is below 20%, flashes twice means the capacity of charging box is 20%-50%, flashes three times means capacity of charging box is 50%-80%, flashes four times means the capacity of charging box is close to full state.

**Charging box in charging**

- ×1 below 20% capacity
- ×2 20%-50% capacity
- ×3 50%-80% capacity
- ×4 more than 80% capacity

NOTE: This equipment has been tested and found to comply with the limits for a Class B digital device, pursuant to part 15 of the FCC Rules. These limits are designed to provide reasonable protection against harmful interference in a residential installation. This equipment generates uses and can radiate radio frequency energy and, if not installed and used in accordance with the instructions, may cause harmful interference to radio communications. However, there is no guarantee that interference will not occur in a particular installation. If this equipment does cause harmful interference to radio or television reception, which can be determined by turning the equipment off and on, the user is encouraged to try to correct the interference by one or more of the following measures:

- Reorient or relocate the receiving antenna.
- Increase the separation between the equipment and receiver.
- Connect the equipment into an outlet on a circuit different from that to which the receiver is connected.
- Consult the dealer or an experienced radio/TV technician for help

Changes or modifications not expressly approved by the party responsible for compliance could void the user's authority to operate the equipment. This device complies with Part 15 of the FCC Rules. Operation is subject to the following two conditions:  
(1) this device may not cause harmful interference, and  
(2) this device must accept any interference received, including interference that may cause undesired operation.

Administrative Regulations on Low Power Radio Waves Radiated Devices warning:  
Article 12  
Without permission granted by the NCC, any company, enterprise, or user is not allowed to change frequency, enhance transmitting power or alter original characteristic as well as performance to a approved low power radio-frequency devices.  
Article 14

The low power radio-frequency devices shall not influence aircraft security and interfere legal communications; If found, the user shall cease operating immediately until no interference is achieved.  
The said legal communications means radio communications is operated in compliance with the Telecommunications Act.  
The low power radio-frequency devices must be susceptible with the interference from legal communications or ISM radio wave radiated devices