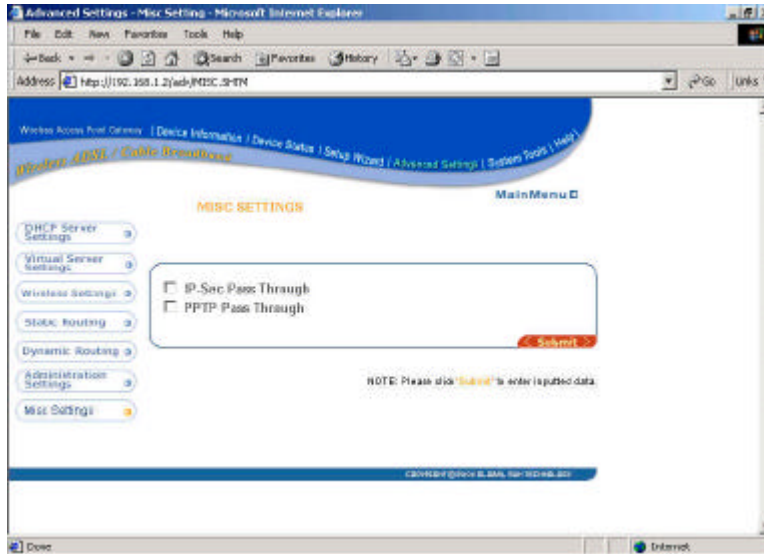


## Misc. Settings



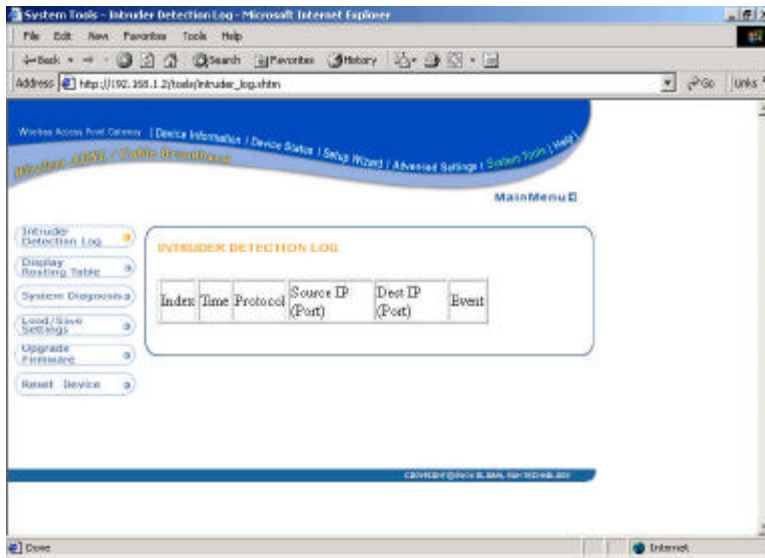
**IP-Sec Pass Through:** This feature lets you use IP Security Pass Through. Usually it requires a 3<sup>rd</sup> party client software (VPN) on the workstations to be able to use the function. Check the box and click “submit” if you want to enable the feature.

**PPTP Pass Through:** Point to Point Tunneling Protocol is the method used to enable VPN (Virtual Private Networking) sessions. This encryption method is supported by all Microsoft Operating System on the market. To enable this feature, please check the box and click “submit”.

## 4-5 System tools

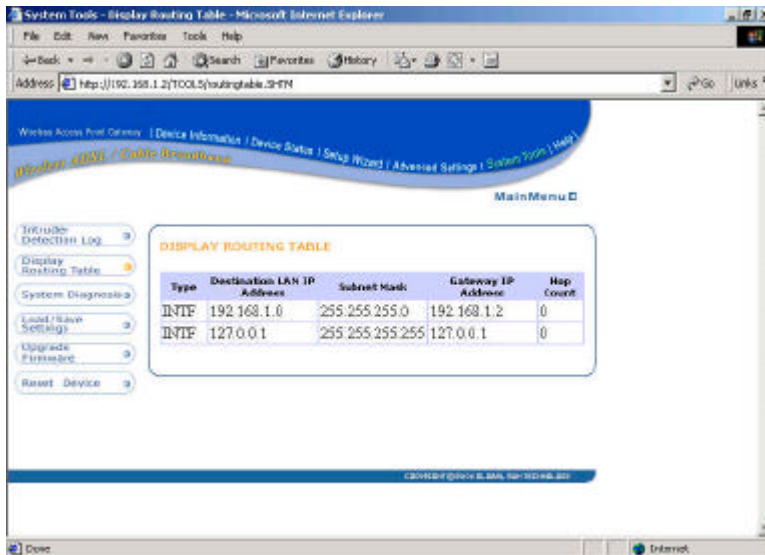
Detects the status of the Wireless Access Point Gateway.

## Intruder Detection Log

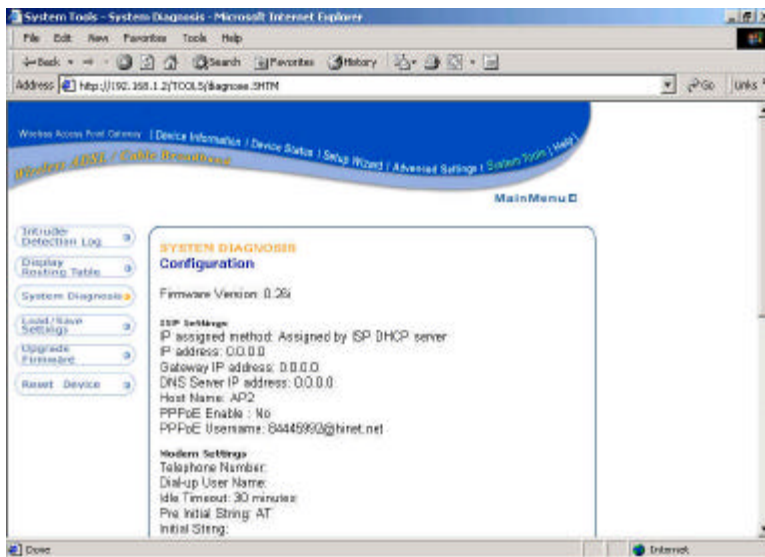


The event messages show the possible hacker attacks that have occurred on your internet Gateway router. Up to 32 hacker attacks may be logged in this manner.

## Display Routing Table

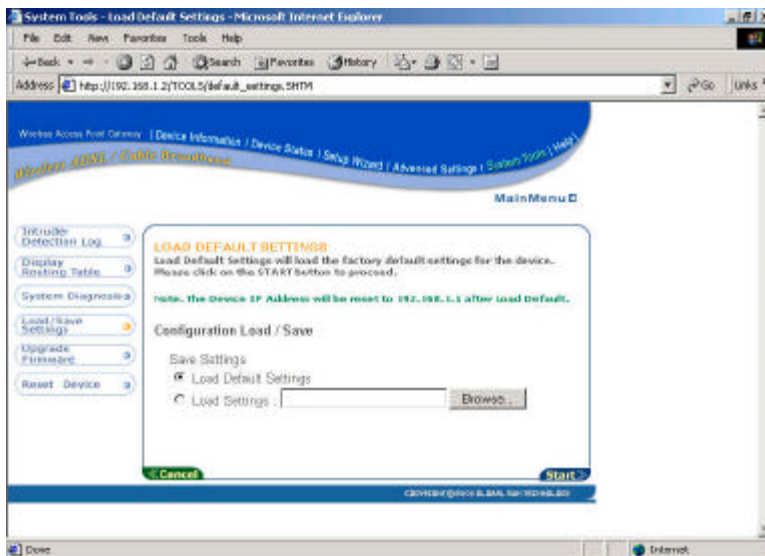


## System diagnosis



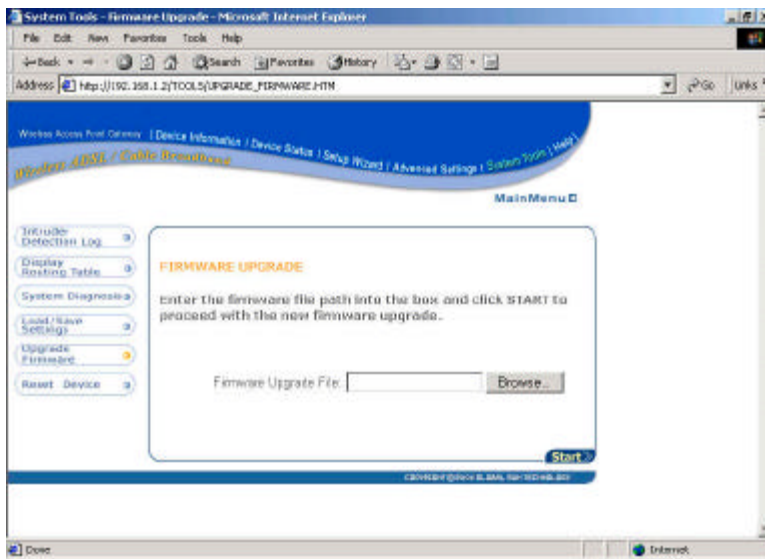
System diagnosis shows your internet gateway's information. It will perform a check-up on your internet gateway to make sure that everything is functioning properly.

## Load Default settings



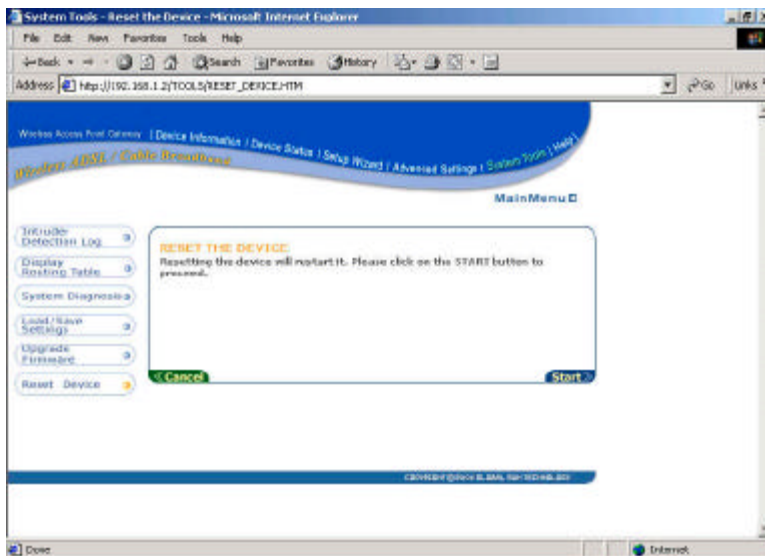
Load Default settings will load the factory default settings for the device.

## Upgrade Firmware



The upgrade firmware option allows you to upgrade the newest firmware to your Wireless Access Point Gateway.

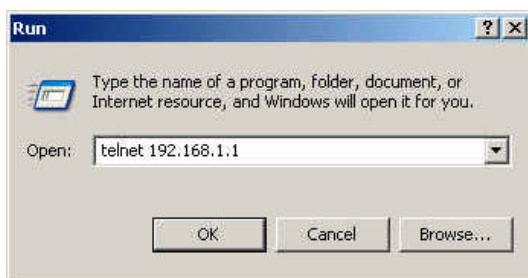
## Reset device



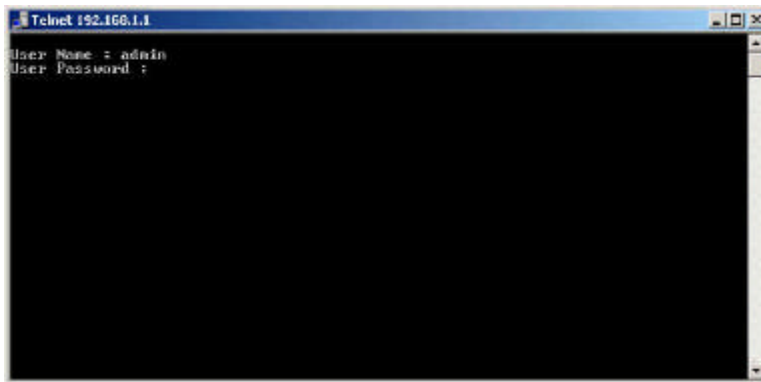
Resetting the device will restart it. Click on the **START** button to restart.

## Section 5 Configuring your Gateway Router with Telnet session

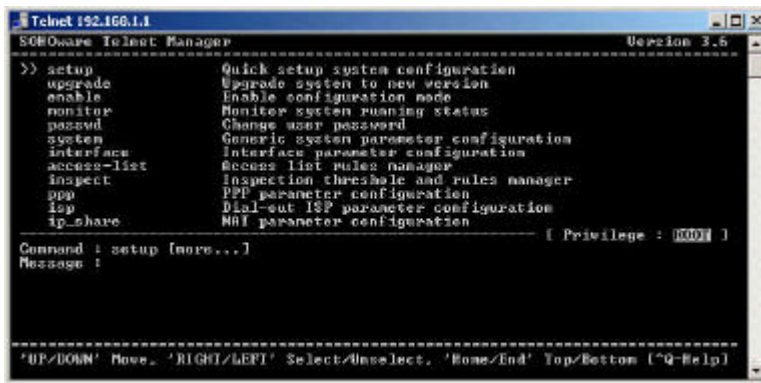
You can start the telnet session by click “**start**” “**run**” and type in “**telnet 192.168.1.1**”



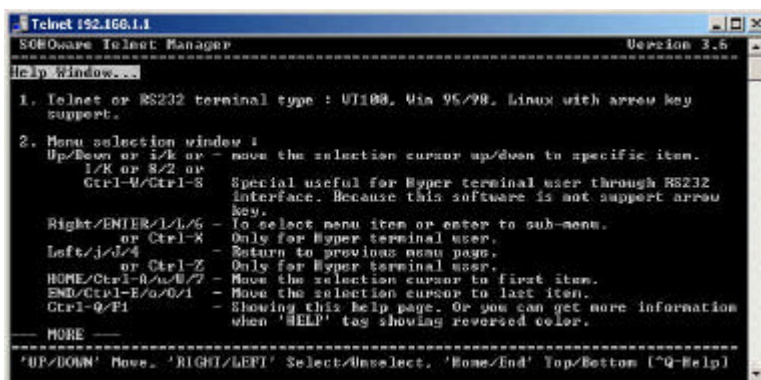
Type in “**admin**” as your login name and hit “**enter**” for default password.



The main menu.

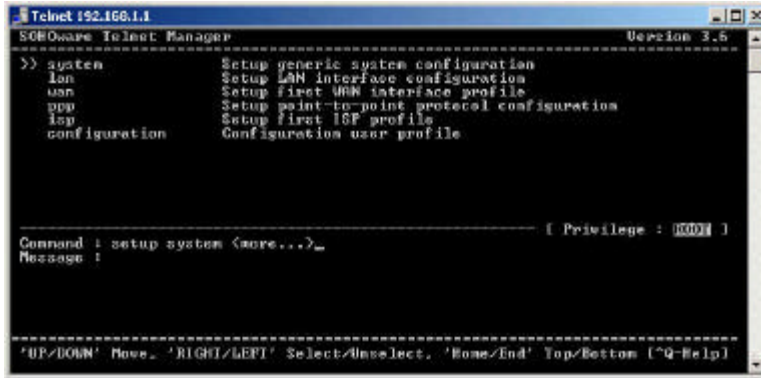


You can press “**Ctrl-Q**” to bring up the help screen and learn all the command in telnet session. Press “**Ctrl-C**” to cancel the selection.



## Setup

Hit “**Enter**” on setup and it will take you to the following menu.



```
Telnet 192.168.1.1
SOFWare Telnet Manager                               Version 3.5
>> system      Setup generic system configuration
   lan         Setup LAN interface configuration
   wan         Setup first WAN interface profile
   ppp         Setup point-to-point protocol configuration
   isp         Setup first ISP profile
   configuration Configuration user profile

----- [ Privilege : 0000 ]
Command : setup system <more...>_
Message :

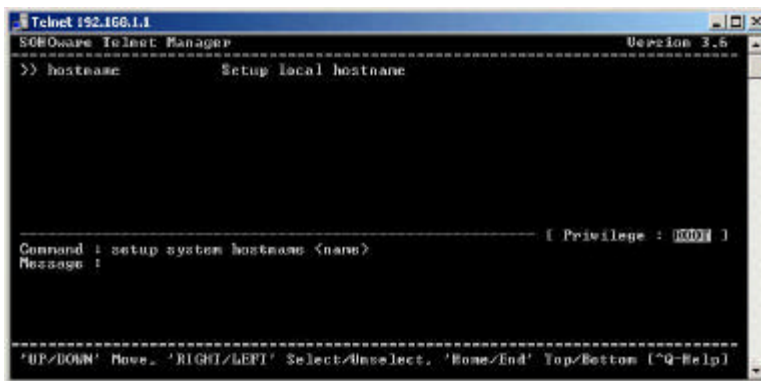
-----
'UP/DOWN' Move, 'RIGHT/LEFT' Select/Unselect, 'Home/End' Top/Bottom (^Q=Help)
```

In this menu, you may setup:

- System**– Setup generic system configuration.
- LAN** – Setup LAN interface configuration.
- Wan**– Setup first WAN interface profile.
- PPP** – Setup point-to-point protocol configuration.
- ISP** – Setup first ISP profile.
- Configuration** – Configuration user profile.

## System

Hit “**Enter**”, it will take you to the screen to setup host name.



```
Telnet 192.168.1.1
SOFWare Telnet Manager                               Version 3.5
>> hostname    Setup local hostname

----- [ Privilege : 0000 ]
Command : setup system hostname <name>
Message :

-----
'UP/DOWN' Move, 'RIGHT/LEFT' Select/Unselect, 'Home/End' Top/Bottom (^Q=Help)
```

## LAN

- Hit “**Enter**” on LAN, it will take you to setup
- Address** – Setup LAN interface IP and network
  - Attrib** – Administrative status and NAT network type.
  - Bridge** – Setup interface bridging function state.

```

Telnet 192.168.1.1
SGOware Telnet Manager                               Version 3.6
-----
>> address      Setup LAN interface IP and netmask
   attrib      Administrative status and NAT network type
   bridge      Setup interface bridging function state

-----

Command : setup lan address <ip> <netmask>_
Message :

-----
'UP/DOWN' Move, 'RIGHT/LEFT' Select/Unselect, 'Home/End' Top/Bottom [Q=HELP]

```

## WAN

```

Telnet 192.168.1.1
SGOware Telnet Manager                               Version 3.6
-----
>> address      Setup WAN interface IP address, netmask
   link_type    Setup interface link type
   attrib      Administrative status and NAT network type
   bridge      Setup interface bridging function state
   ether_interface Setup PPP over ethernet interface number
   isp         Setup ISP profile attrib

-----

Command : setup wan address <ip> <netmask>
Message : Please input the following information.
IP address <ENTER for default> <0.0.0.0> : _

-----
'UP/DOWN' Move, 'RIGHT/LEFT' Select/Unselect, 'Home/End' Top/Bottom [Q=HELP]

```

Hit “**Enter**” on WAN and it will take you to setup:

**Address** – Setup WAN interface IP address, Subnet Mask.

**Link\_type** – Setup interface link type.

**Attrib** – Administrative status and NAT network type.

**Bridge** – Setup interface bridging function state.

**Ether\_interface** – Setup PPP over Ethernet interface number.

**ISP** – Setup ISP profile attrib.

## PPP

```

Telnet 192.168.1.1
SGOware Telnet Manager                               Version 3.6
-----
>> peer_address Setup peer IP address
   user_profile  Setup access account and password

-----

Command : setup ppp peer_address <ip>
Message :

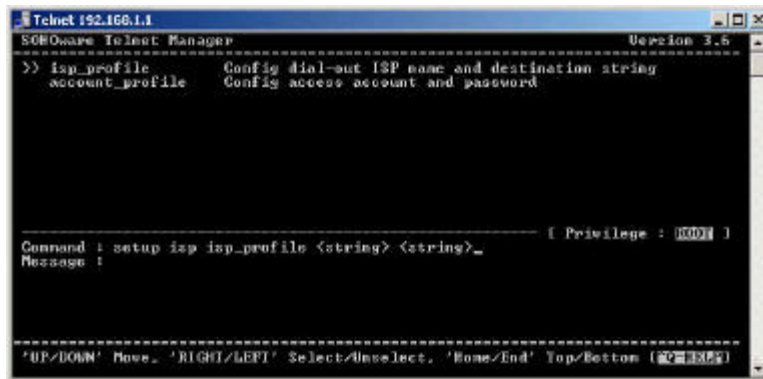
-----
'UP/DOWN' Move, 'RIGHT/LEFT' Select/Unselect, 'Home/End' Top/Bottom [Q=HELP]

```



Hit “**Enter**” on PPP and you can setup:  
**Peer\_address** – Setup peer IP address.  
**User\_Profile** – Setup access account and password.

## ISP



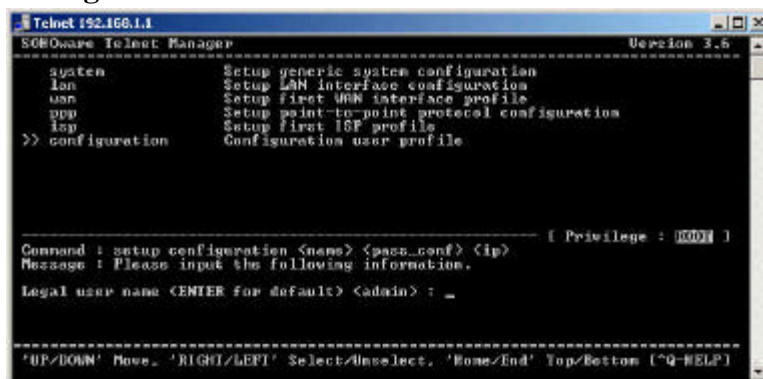
```
Telnet 192.168.1.1
SOFWare Telnet Manager                               Version 3.5
-----
>> isp_profile      Config dial-out ISP name and destination string
   account_profile  Config access account and password

-----
Command : setup isp isp_profile <string> <string>_ [ Privilege : 0001 ]
Message :

-----
'UP/DOWN' Move, 'RIGHT/LEFT' Select/Unselect, 'Home/End' Top/Bottom [F1-F12]
```

Hit “**Enter**” on ISP and you can setup:  
**ISP\_profile** – Configure dial-out ISP name and destination string.  
**Account\_profile** – Configure access account and password.

## Configuration



```
Telnet 192.168.1.1
SOFWare Telnet Manager                               Version 3.5
-----
system      Setup generic system configuration
lan         Setup LAN interface configuration
wan         Setup first WAN interface profile
ppp         Setup point-to-point protocol configuration
isp         Setup first ISP profile
>> configuration  Configuration user profile

-----
Command : setup configuration <name> <pass_conf> <ip> [ Privilege : 0001 ]
Message : Please input the following information.
Legal user name <ENTER for default> <admin> : _

-----
'UP/DOWN' Move, 'RIGHT/LEFT' Select/Unselect, 'Home/End' Top/Bottom [^Q-HELP]
```

Hit “**Enter**” on configuration and it will prompt you for login ID and password, also you may need to enter the client’s IP address.

## Upgrade

```

Telnet 192.168.1.1
SOHOware Telnet Manager                               Version 3.5
-----
  setup          Quick setup system configuration
  >> upgrade      Upgrade system to new version
  enable         Enable configuration mode
  monitor        Monitor system running status
  passwd         Change user password
  system         Generic system parameter configuration
  interface      Interface parameter configuration
  access-list    Access list rules manager
  inspect        Inspection threshold and rules manager
  ppp            PPP parameter configuration
  isp            Dial-out ISP parameter configuration
  ip_share       NAT parameter configuration
-----
Command : upgrade <more...>_
Message :

-----
'UP/DOWN' Move, 'RIGHT/LEFT' Select/Unselect, 'Home/End' Top/Bottom (^Q=Help)

```

Hit “Enter” on Upgrade and you can configure the following:

**Image** – Upgrade kernel image file.

**Web\_image** – Upgrade web config image file.

**Bootstrap2** – Upgrade boot strap.

**Conf** – Configuration file upgrade.

All these options require the server IP address and the file name to upgrade.

## Enable

```

Telnet 192.168.1.1
SOHOware Telnet Manager                               Version 3.5
-----
  setup          Quick setup system configuration
  >> enable       Enable configuration mode
  monitor        Monitor system running status
  passwd         Change user password
  system         Generic system parameter configuration
  interface      Interface parameter configuration
  access-list    Access list rules manager
  inspect        Inspection threshold and rules manager
  ppp            PPP parameter configuration
  isp            Dial-out ISP parameter configuration
  ip_share       NAT parameter configuration
-----
Command : enable <CR>
Message :

-----
'UP/DOWN' Move, 'RIGHT/LEFT' Select/Unselect, 'Home/End' Top/Bottom (^Q=Help)

```

This function is to enable the configuration mode.

## Monitor

```

Telnet 192.168.1.1
SGOSware Telnet Manager                               Version 3.6
-----
>> route          List routing table
netbios_pool     List NetBIOS name database
wan              List WAN interface status
config_access    Monitor configure access control
access-list      Monitor access control rules pool
inspect-TCP      Monitor inspecting TCP sessions
inspect-UDP      Monitor inspecting UDP sessions
syslog           Monitor system log generated by CBAC

----- [ Privilege : 000 ] -----
Command : monitor route <CR>
Message :

-----
'UP/DOWN' Move, 'RIGHT/LEFT' Select/Unselect, 'Home/End' Top/Bottom (^Q=Help)

```

Hit “**Enter**” on Monitor you can setup the following:

- Route** – List of routing table.
- Netbios\_pool** – List NetBIOS name database.
- Wan** – List WAN interface status.
- Config\_access** – Monitor configure access control.
- Access-list** – Monitor access control rules pool.
- Inspect-TCP** – Monitor inspecting TCP sessions.
- Inspect-UDP** – Monitor inspecting UDP sessions.
- Syslog** – Monitor system log generated by CBAC.

## Password

```

Telnet 192.168.1.1
SGOSware Telnet Manager                               Version 3.6
-----
setup           Quick setup system configuration
upgrade         Upgrade system to new version
enable          Enable configuration mode
monitor         Monitor system running status
>> passwd        Change user password
system          Generic system parameter configuration
interface       Interface parameter configuration
access-list     Access list rules manager
inspect         Inspection threshold and rules manager
ppp             PPP parameter configuration
l2p             Dial-out ISP parameter configuration
ip-share        NNI parameter configuration

----- [ Privilege : 000 ] -----
Command : passwd [username]
Message :

-----
'UP/DOWN' Move, 'RIGHT/LEFT' Select/Unselect, 'Home/End' Top/Bottom (^Q=Help)

```

You may reset the password on this option. Hit “**Enter**” and it will prompt you for user name and to enter the new password.

## System

```
Telnet 192.168.1.1
Software Telnet Manager                               Version 3.5
-----
>> op_mode      Kernel operation mode
   hostname     Config local hostname
   domain_name  Config local domain name
   default_gateway Default gateway

----- [ Privilege : 0001 ]
Command : system op_mode <Router|Bridging|Host>
Message :

-----
'UP/DOWN' Move, 'RIGHT/LEFT' Select/Unselect, 'Home/End' Top/Bottom [ESC] [ESC]
```

Hit “**Enter**” on system and you can setup the following:

- Op\_mode** – Kernel operation mode.
- Hostname** – Config local hostname.
- Domain\_name** – Config local domain name.
- Default\_gateway** – Default gateway.

### Interface

```
Telnet 192.168.1.1
Software Telnet Manager                               Version 3.5
-----
>> lan          Config LAN interface profile
   wan          Config WAN interface profile
   wireless     Config wireless interface profile

----- [ Privilege : 0001 ]
Command : interface lan <I"> <wps...>_
Message :

-----
'UP/DOWN' Move, 'RIGHT/LEFT' Select/Unselect, 'Home/End' Top/Bottom [ESC] [ESC]
```

Hit “**Enter**” on interface and you can setup the following:

- Lan** – Config LAN interface profile.
- Wan** – Config WAN interface profile.
- Wireless** – Config wireless interface profile.

### Access-List

```

Telnet 192.168.1.1
SOHOware Telnet Manager                               Version 3.5
-----
>> standard      Add/modify standard access control rule
   extended     Add/modify extended access control rule
   URL_list     URL blocking list

-----
Command : access-list standard <1-4> <more...>
Message :

-----
'UP/DOWN' Move, 'RIGHT/LEFT' Select/Unselect, 'Home/End' Top/Bottom [ESC]

```

Hit “**Enter**” on access-list and you can setup the following:

- Standard** – Add/Modify standard access control rule.
- Extended** – Add/Modify extended access control rule.
- URL\_list** – URL blocking list.

## Inspect

```

Telnet 192.168.1.1
SOHOware Telnet Manager                               Version 3.5
-----
>> module       Enable or disable inspection module
   dos_func     Enable or disable DoS pattern detect
   WAN_ping    Deny ping request from WAN
   rip_defect  Deny RIP from WAN
   DMZ        Enable or disable DMZ
   name       Modify inspection rules pool
   name_delete Delete inspection rule
   tcp       TCP session timeout
   udp       UDP session timeout
   max-incomplete Existing half-open session threshold
   one-minute The rate of new half-open session
   port_scan_defect 'Port Scan' defect sensitive criteria

-----
Command : inspect module <Disable/Enable>
Message :

-----
'UP/DOWN' Move, 'RIGHT/LEFT' Select/Unselect, 'Home/End' Top/Bottom [ESC]

```

Hit “**Enter**” on inspect and you can setup the following:

- Module** – Enable or disable inspection module.
- Dos\_Func** – Enable or disable Dos pattern detect.
- Wan\_ping** – Deny ping request from WAN.
- Rip\_defect** – Deny RIP from WAN.
- DMZ** – Enable or disable DMZ.
- Name** – Modify inspection rules pool.
- Name\_delete** – Delete inspection rule.
- TCP** – TCP session timeout.
- UDP** – UDP session timeout.
- Max-incomplete** – Existing half-open session threshold.
- One-minute** – The rate of new half-open session.
- Port\_scan\_defect** – “Port Scan” defect sensitive criteria.

## PPP