

**Dual-Band (draft)**  
**Wireless Network Adapter**  
**User Manual**

**Model: GL2554MP-0A**

**version 1.0**

## **Manufacturer's Disclaimer Statement**

The information in this document is subject to change without notice and does not represent a commitment on the part of the vendor. No warranty or representation, either expressed or implied, is made with respect to the quality, accuracy or fitness for any particular purpose of this document. The manufacturer reserves the right to make changes to the content of this document and/or the products associated with it at any time without obligation to notify any person or organization of such changes. In no event will the manufacturer be liable for direct, indirect, special, incidental or consequential damages arising out of the use or inability to use this product or documentation, even if advised of the possibility of such damages. This document contains materials protected by copyright. All rights are reserved. No part of this manual may be reproduced or transmitted in any form, by any means or for any purpose without expressed written consent of its authors. Product names appearing in this document are mentioned for identification purchases only. All trademarks, product names or brand names appearing in this document are registered property of their respective owners.

## **FCC STATEMENT**

This product has been tested and complies with the specifications for a Class B digital device, pursuant to Part 15 of the FCC Rules. These limits are designed to provide reasonable protection against harmful interference in a residential installation. This equipment generates, uses, and can radiate radio frequency energy and, if not installed and used according to the instructions, may cause harmful interference to radio communications. However, there is no guarantee that interference will not occur in a particular installation. If this equipment does cause harmful interference to radio or television reception, which is found by turning the equipment off and on, the user is encouraged to try to correct the interference by one or more of the following measures:

- Reorient or relocate the receiving antenna
- Increase the separation between the equipment or devices
- Connect the equipment to an outlet other than the receiver's
- Consult a dealer or an experienced radio/TV technician for assistance

**FCC Caution: Any changes or modifications not expressly approved by the party responsible for compliance could void the user's authority to operate this equipment.**

This device complies with Part 15 of the FCC Rules. Operation is subject to the following two conditions: (1) This device may not cause harmful interference, and (2) this device must accept any interference received, including interference that may cause undesired operation.

**This device is intended only for OEM integrators under the following conditions:**

The antenna must be installed such that 20 cm is maintained between the antenna and users, and

2) The antenna should be integral if the end device is intended to be operated in 5.15 ~ 5.25GHz frequency range.

As long as 2 conditions above are met, further transmitter test will not be required. However, the OEM integrator is still responsible for testing their end-product for any additional compliance requirements required with this module installed (for example, digital device emissions, PC peripheral requirements, etc.).

**IMPORTANT NOTE:** In the event that these conditions can not be met (for example certain laptop configurations or co-location with another transmitter), then the FCC authorization is no longer considered valid and the FCC ID can not be used on the final product. In these circumstances, the OEM integrator will be responsible for re-evaluating the end product (including the transmitter) and obtaining a separate FCC authorization.

End Product Labeling

This transmitter module is authorized only for use in device where the antenna may be installed such that 20 cm may be maintained between the antenna and users (for example: Wireless Access Point and Wireless Router). The final end product must be labeled in a visible area with the following: “Contains TX FCC ID: O7J-GL2554MP-0A”.

Manual Information That Must be Included

The OEM integrator has to be aware not to provide information to the end user regarding how to install or remove this RF module in the users manual of the end product which integrate this module.

The users manual for OEM integrators end users must include the following information in a prominent location “ IMPORTANT NOTE: To comply with FCC RF exposure compliance requirements, the antenna used for this transmitter must be installed to provide a separation distance of at least 20 cm from all persons and must not be co-located or operating in conjunction with any other antenna or transmitter”.

If the end product integrating this module is going to be operated in 5.15 ~ 5.25GHz frequency range, the warning statement in the user manual of the end product should include the restriction of operating this device in indoor could void the user’ s authority to operate the equipment.

## Driver Installation

Step 1: Insert the Dual-band Wireless Network Adapter into your computer. Windows Found New Hardware Wizard will come up. Select the second option and click “Next” to continue.



Step 2: Select the driver to install.

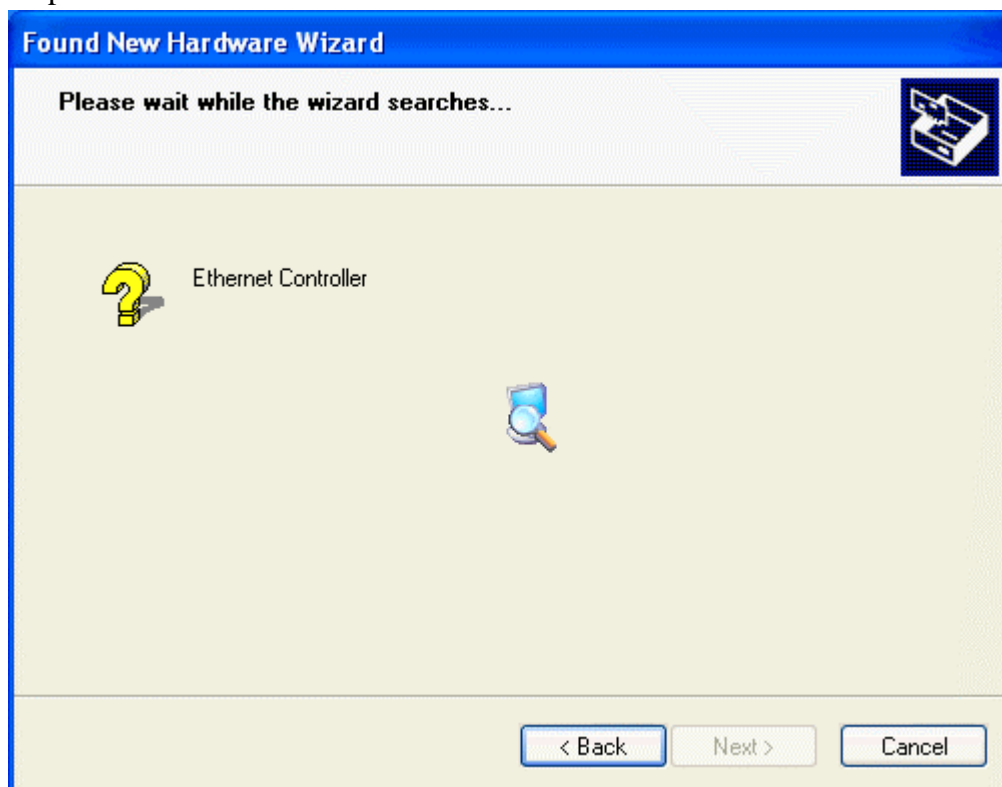
Click “Browse” to select the folder where you store the driver files.

Click “OK” to continue.

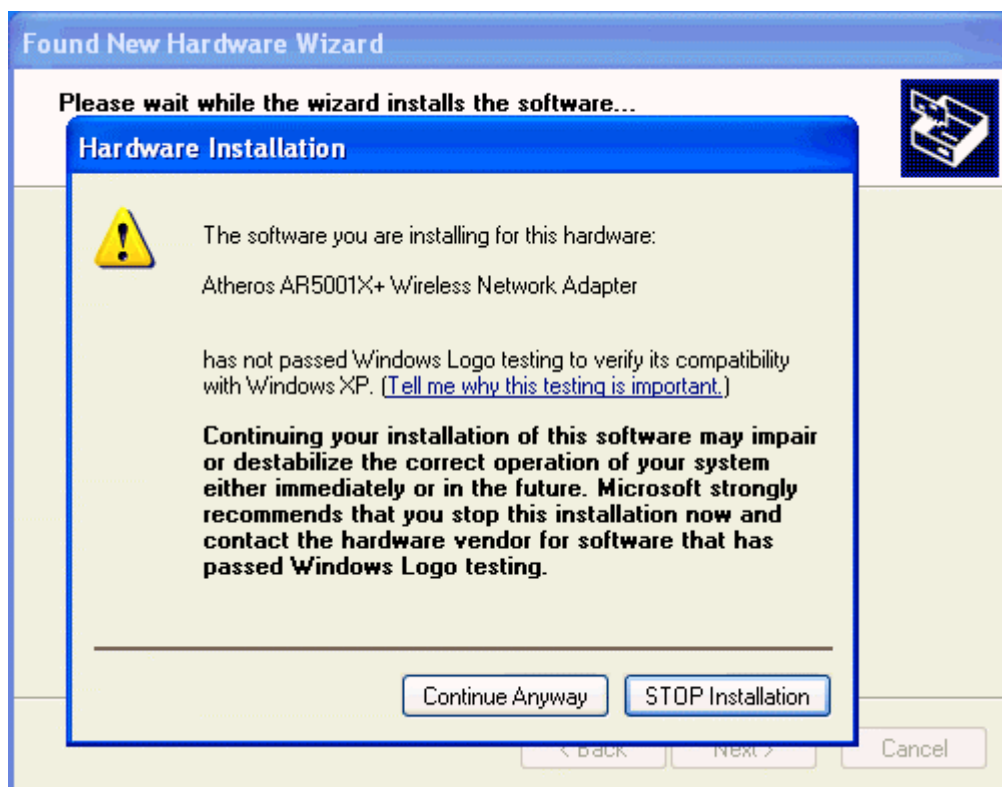
Click “Next” to continue.



#### Step 4: Driver Found

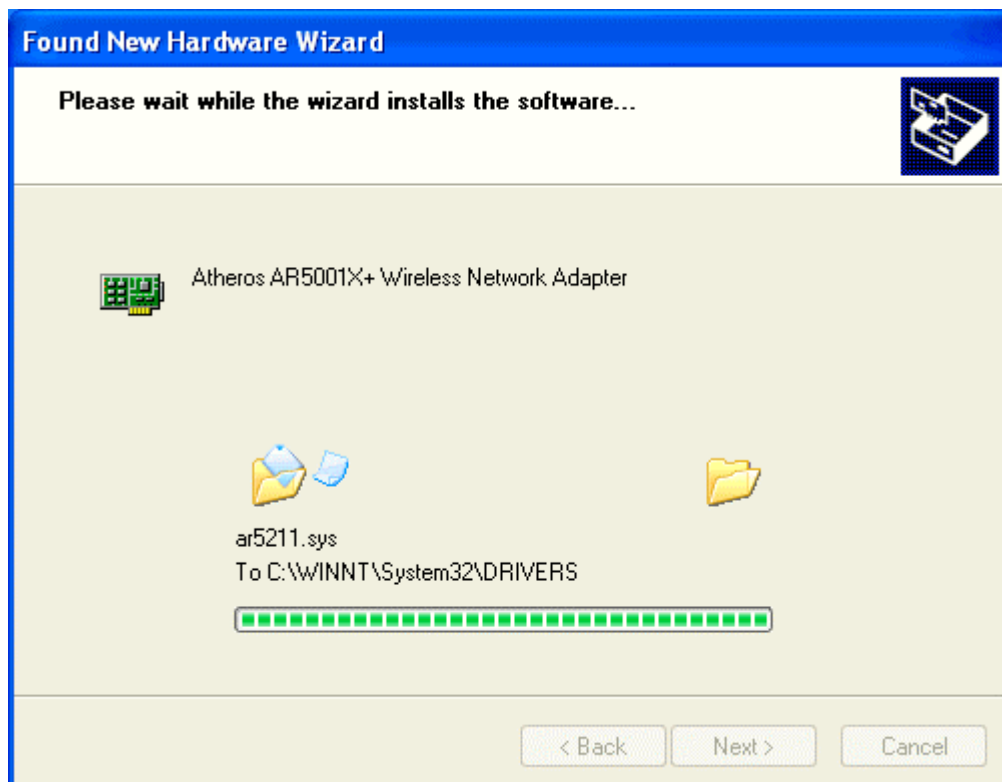


Click "Continue Anyway" to continue



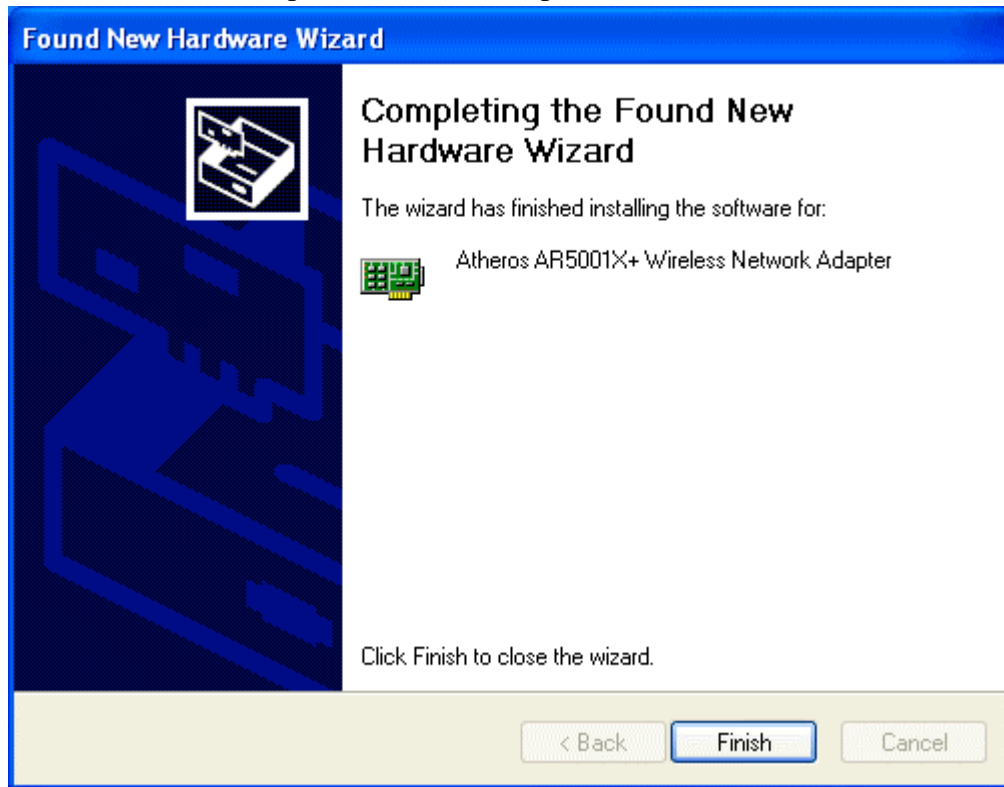
### Step 3: Driver Installation

Driver files are being saved to your Windows system.

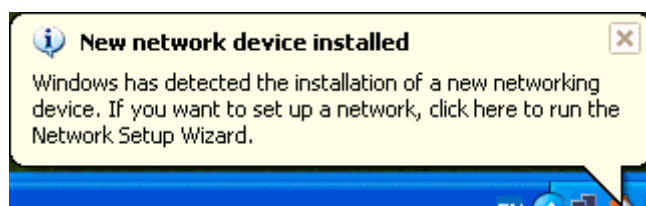


#### Step 4: Driver Installation Complete

Click “Finish” to complete the driver setup.



The following message will appear as soon as you successfully installed the driver for your Dual-band wireless network adapter.

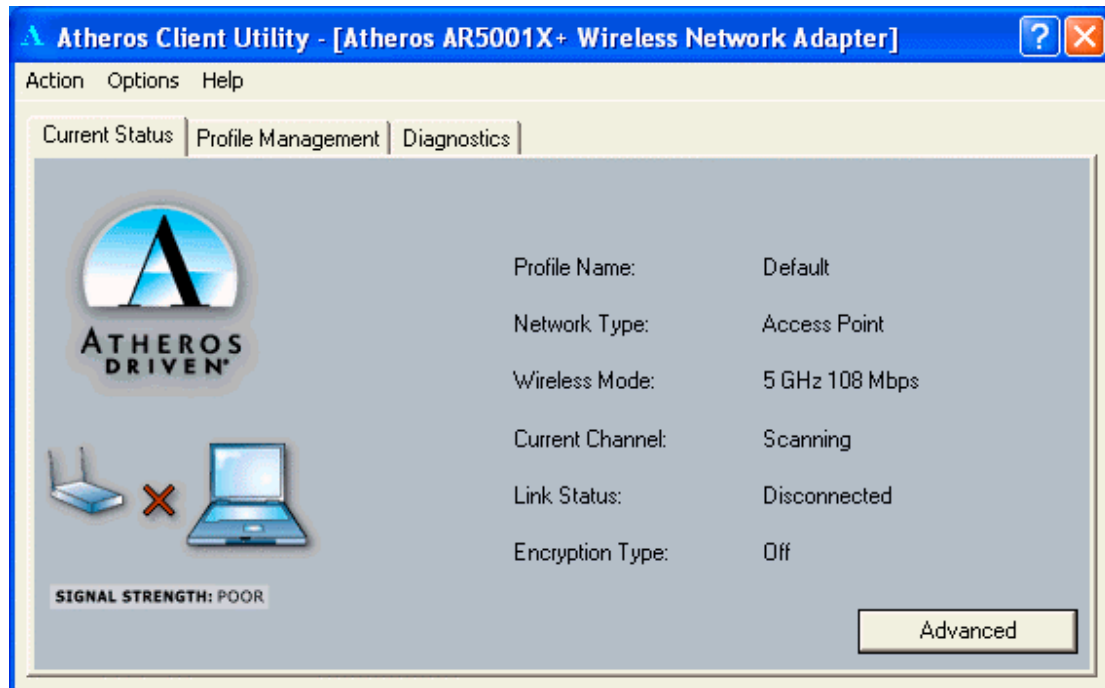




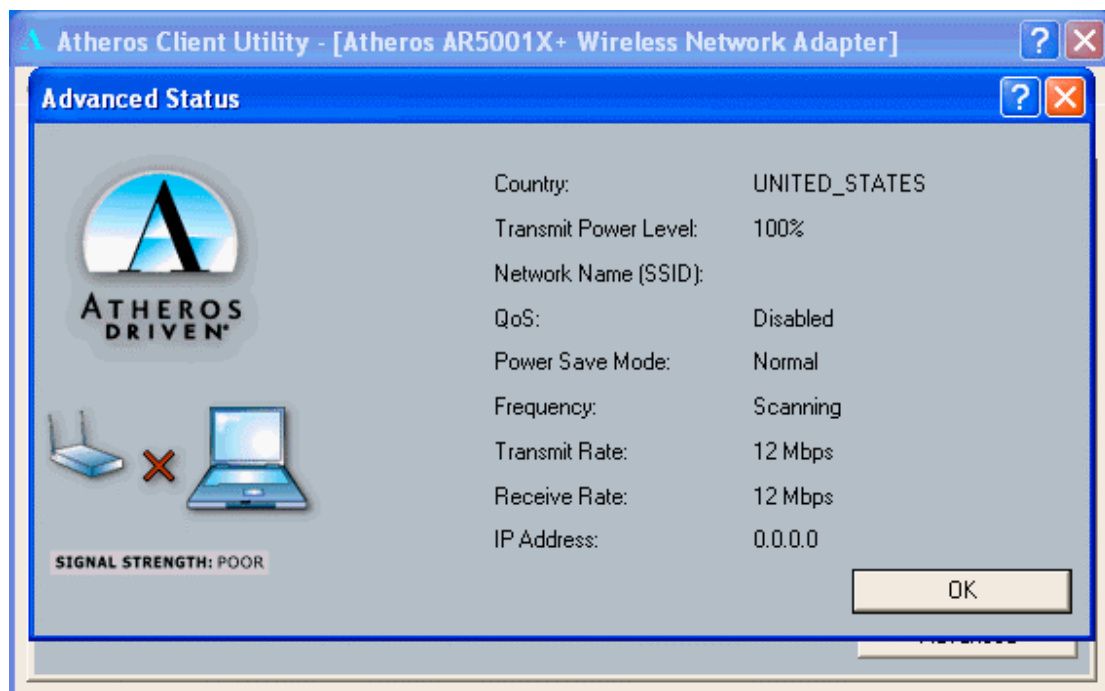
## Utility Configuration

### *Current Status*

Display the current settings such as Profile Name, Network Type, Wireless Mode, Current Channel, Link Status and Encryption type.

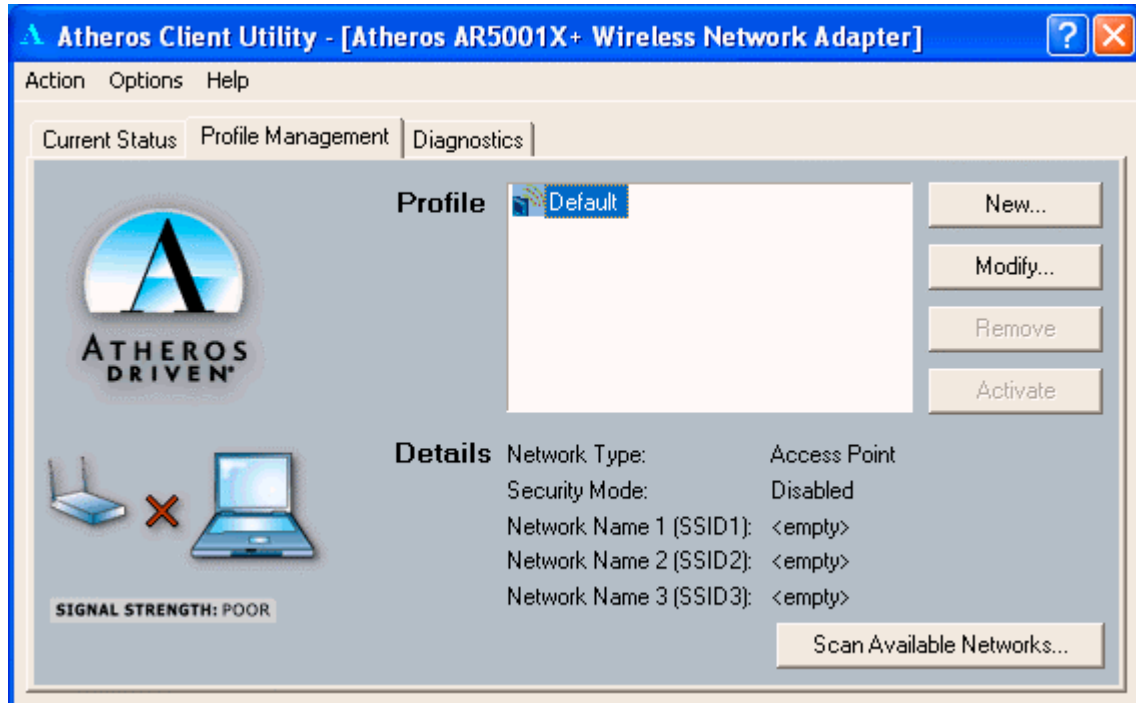


Click on the “Advanced” button to change display details.



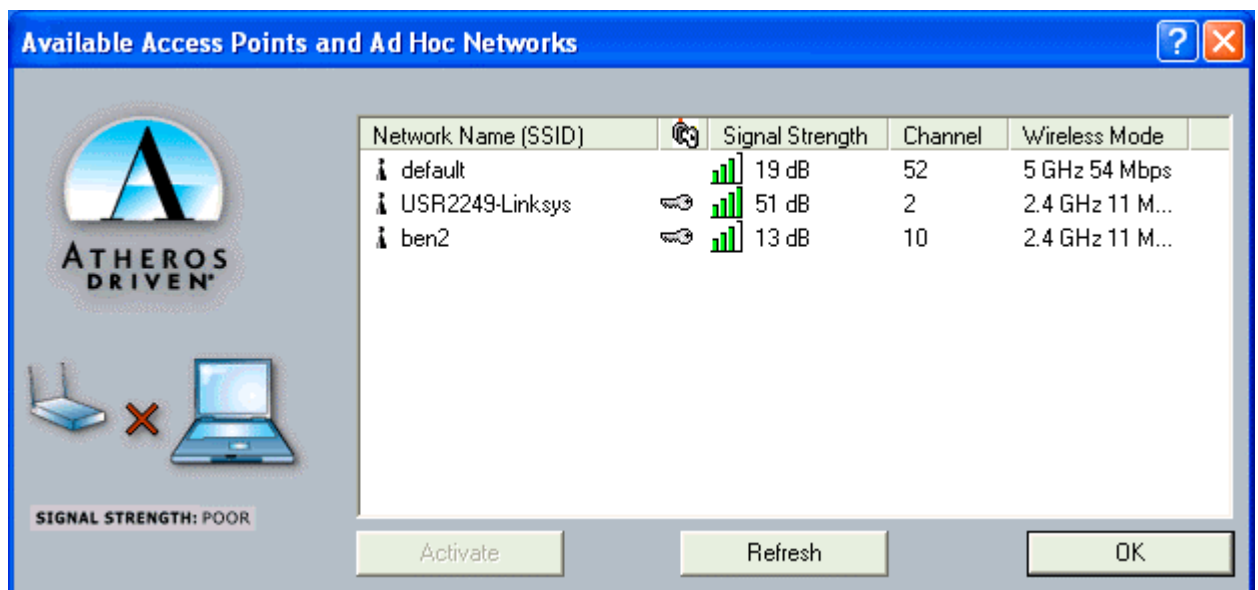
## Profile Management

Create profile for the common wireless networks that you get connected to. You may create new profile by clicking on the “New” button, and modify the existing



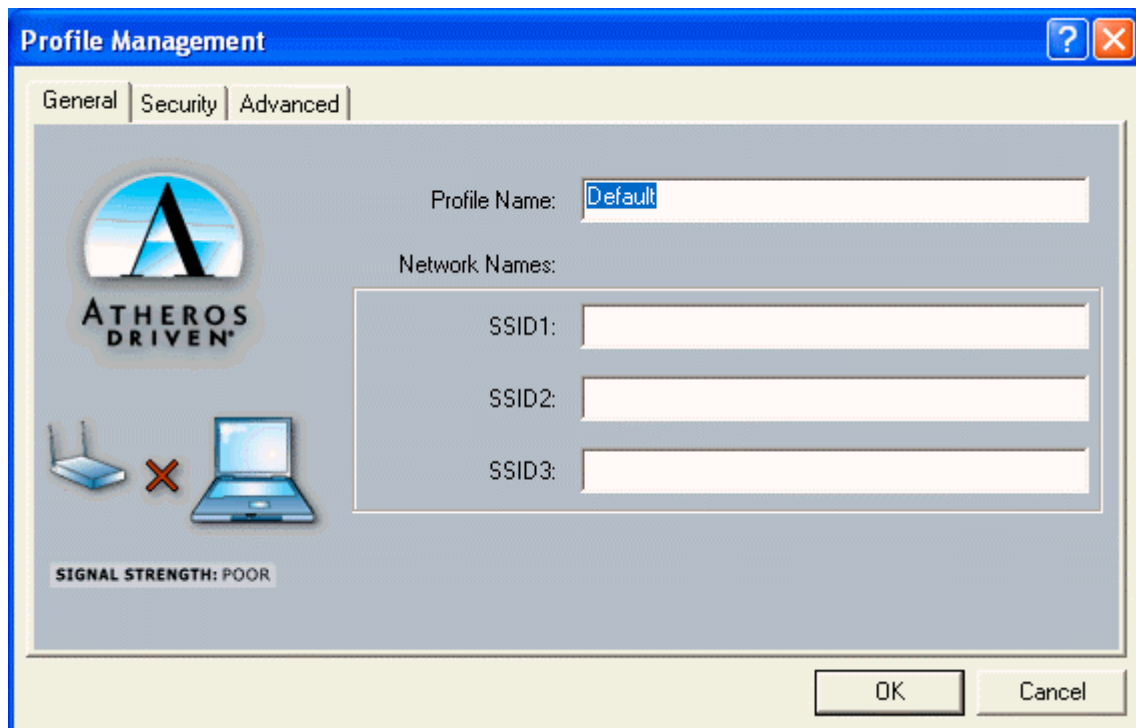
profile settings by clicking on the “Modify” button.

Click on “Scan Available Network” to scan for the nearby wireless network.

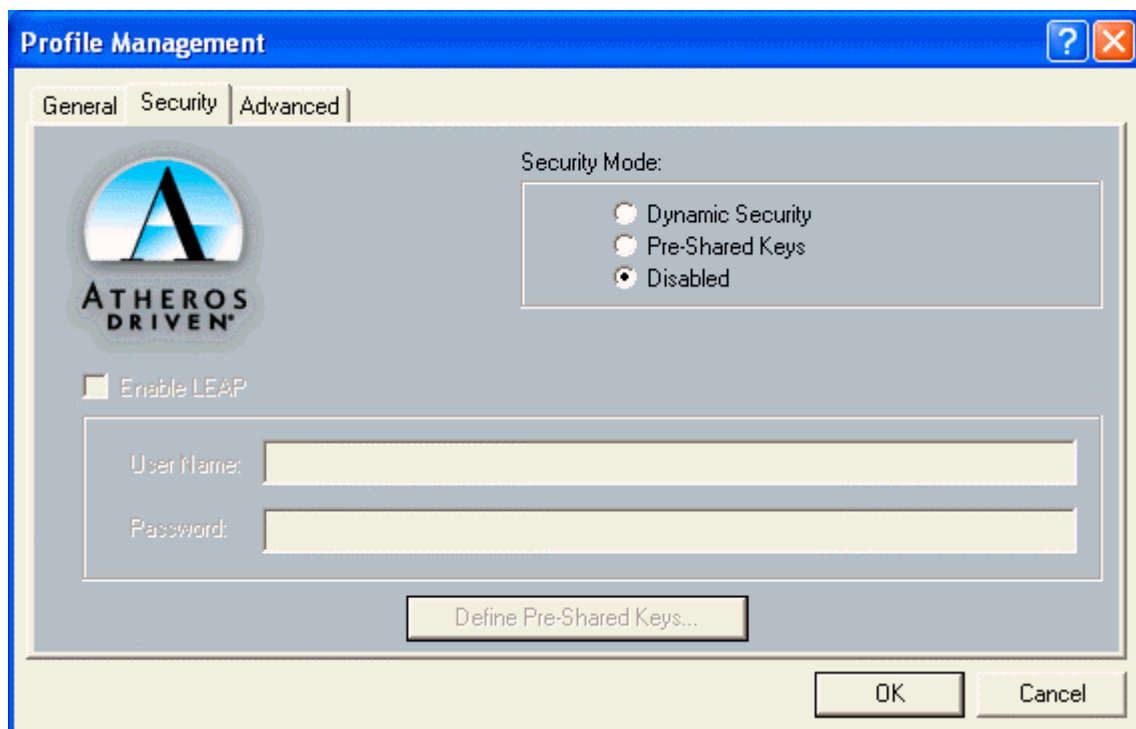


Select the wireless network that you wish to get connected to and click “OK” to continue.

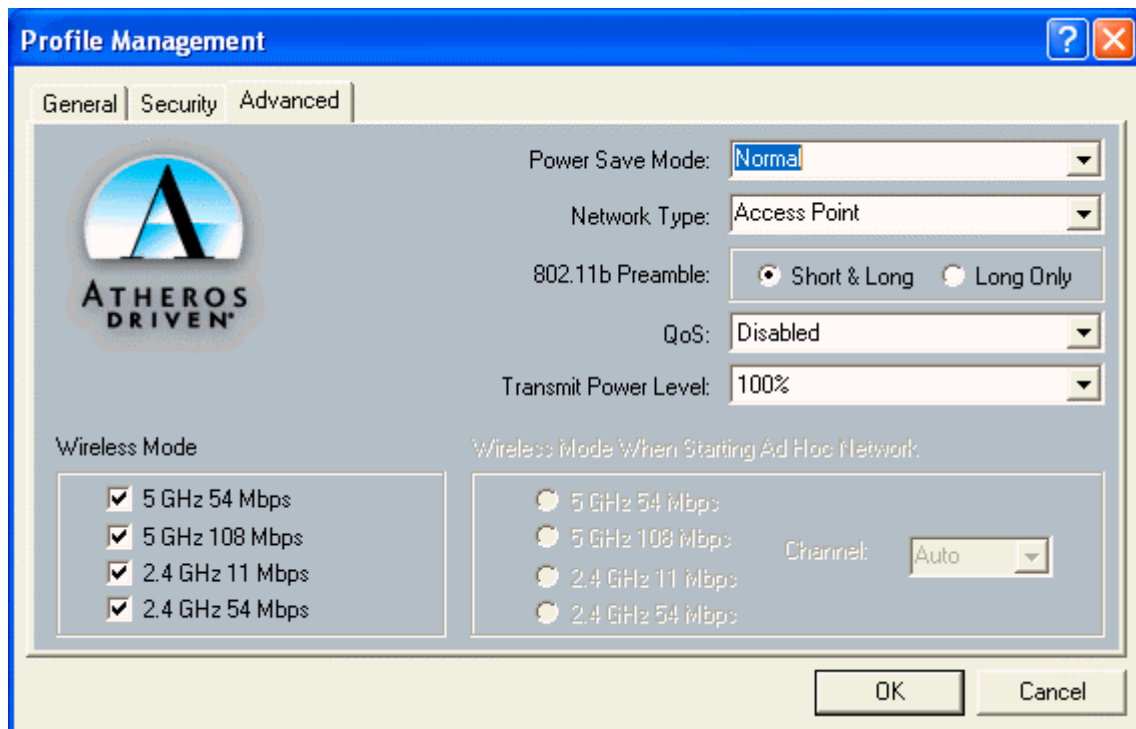
In “General” Tab, Enter “Profile Name”, and enter SSID for this profile.

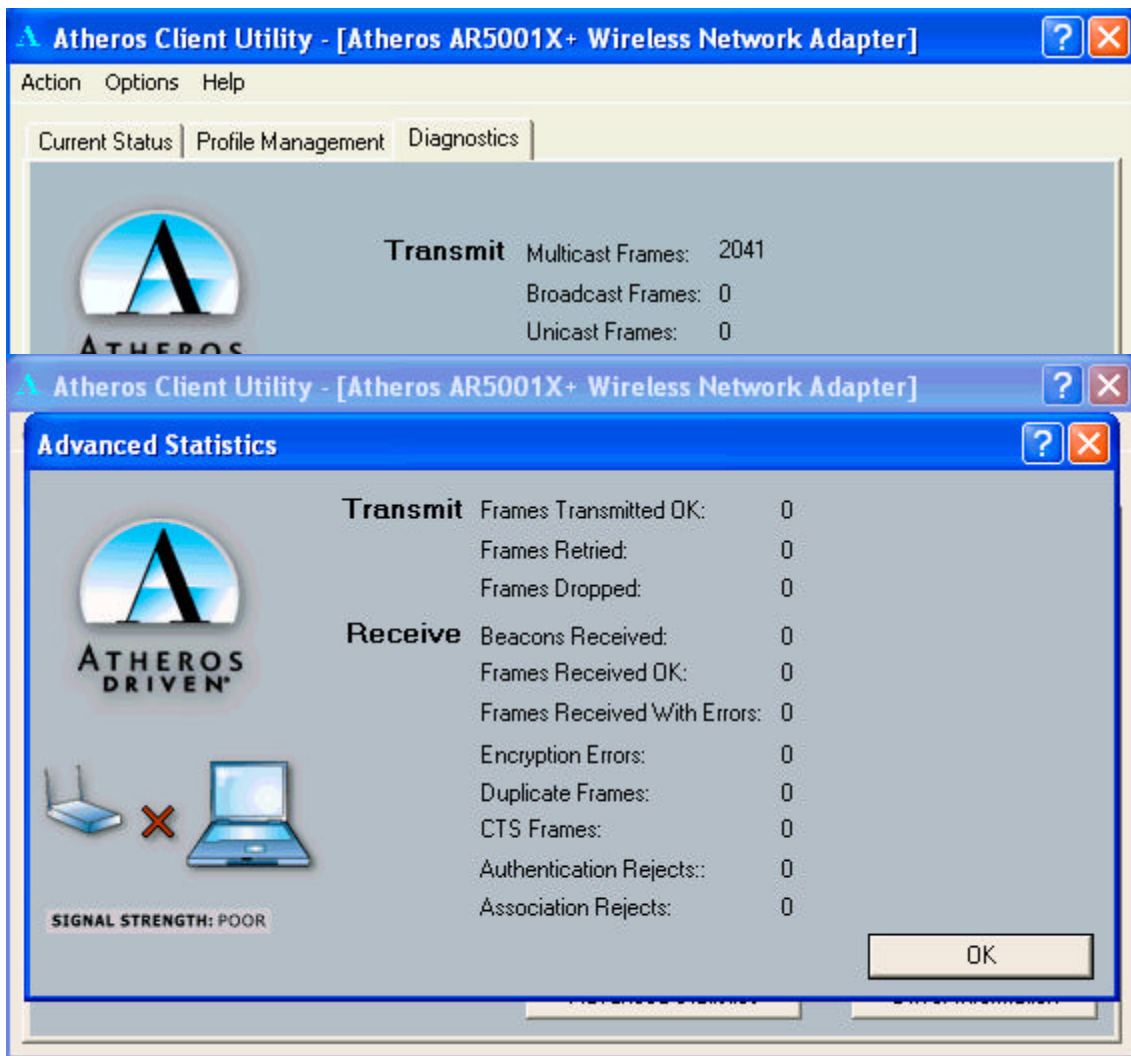


In “Security” Tab, select the security mode, and enter the WEP key if you enable the Pre-Shared Keys option. Click “OK” for the changes to be effective.



In the “Advanced” Tab, select the Power Save mode, Network Type and other advanced options. Click “OK” for the changes to be effective.





## Diagnosis

Display current statistics such as Transmitting and Receiving packets.

Click on "Advanced Statistics"

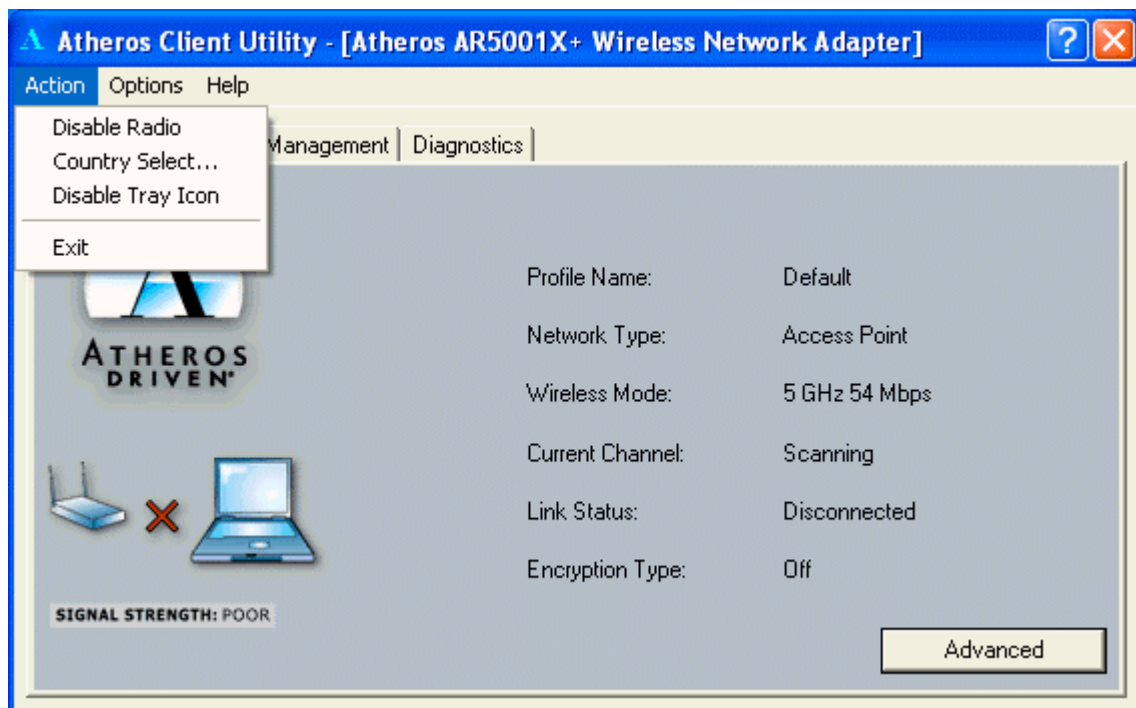
to display more detail information

Click "Driver Information" to display driver version and other detail information.

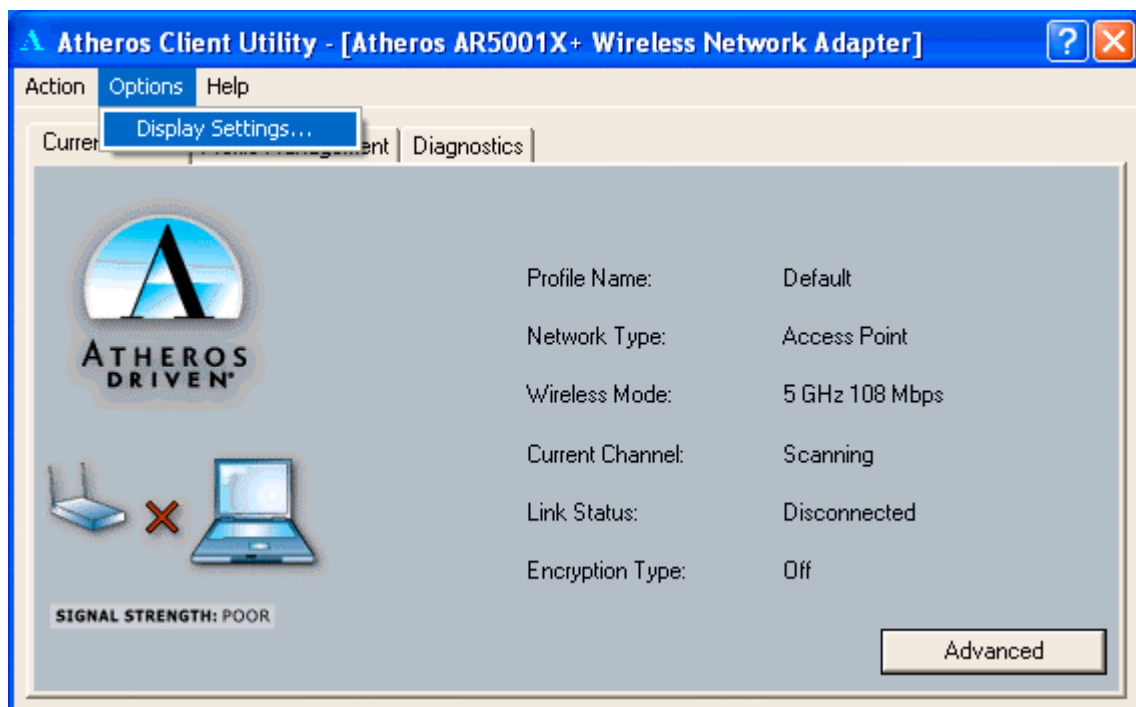


Click on “Action” on the menu selection to access functions such as “Disable Radio”,

“Country Select...” and “Disable Tray Icon”



Click “Options” to display current settings.



**Federal Communication Commission Interference Statement**