



BTA-806

Bluetooth Dongle

User manual, version 0.75



Copyright

© 2005 GlobalSat Technology Corporation. All rights reserved

The trademarks mentioned in this document are legally registered to their respective companies.

1. Introduction

Our latest Bluetooth Dongle has been designed and developed specifically for all current Bluetooth devices. The USB Bluetooth 2.0 Dongle combines the latest features with premium levels of quality and reliability. It enables networking products through Bluetooth capable of data transfer among devices such as PDAs, printers, mobiles, computers, and other emerging electronic devices. Compatible with USB 1.1 and 2.0, the BTA-806 supports Windows XP/2000/Me and installs quickly and easily to a desktop or notebook computer with an available USB port.

1.1. Package

Before you start up, make sure that your package includes the following items. If any items are missing or damaged, contact your dealer immediately.

- BTA-806 Bluetooth dongle
- CD (including the driver)

1.2. Features

- Bluetooth v2.0 EDR compliant (Class II)
- Frequency Hopping Spread Spectrum (FHSS) for better connections
- High Speed data transfer up to 3Mbps
- Connects up to 7 BT devices to the PC
- Implements a Personal Area Network (PAN)
- Uses 2.4GHz ~ 2.4835GHz ISM band
- Connection range up to 10 Meters (32 feet)
- Activity indicator LED
- Plug and Play
- LMP improvements

2. Specification

Model Name	BTA-806
Product Description	Bluetooth USB dongle
USB Interface	1.1
Certification	FCC, CE
Bluetooth Version	Bluetooth v2.0 EDR
RF Output Power	Class 2
Frequency	2.4GHz ~ 2.4835GHz ISM band
Spread Spectrum	FHSS (Frequency Hopping Spread Spectrum)
Operating Range	10 meters (32 feet)
Sensitivity	-80dBm @0.1%BER
Bluetooth Profile	SYNC、SPP、HCRP、PAN、OPP、LAP、HID、FTP、FAX、A2DP、AVRCP、DUN、BIP
LED	1 LED
Operation Temperature	-10 °C ~ 55 °C
Storage Temperature	-20 °C ~ 60 °C
Humidity	10% ~ 90% non-condensing
Dimensions	42 * 18 * 8mm (L * W * T)
Power Consumption	Working: 58mA , Stand by: 13mA

3. Installation

Install the driver before you use the Bluetooth dongle.

- 1) Please place the driver CD into CD-ROM drive, the Autorun program will start automatically. Please select the language you want. If the Autorun program does not start, please manually run it by double click on the "setup.exe" from CD root directory.
- 2) The Autorun program will prepare to install the driver for you, please follow the instruction to complete the installation process.
- 3) After the installation is completed, please restart your system to take effect of the driver.

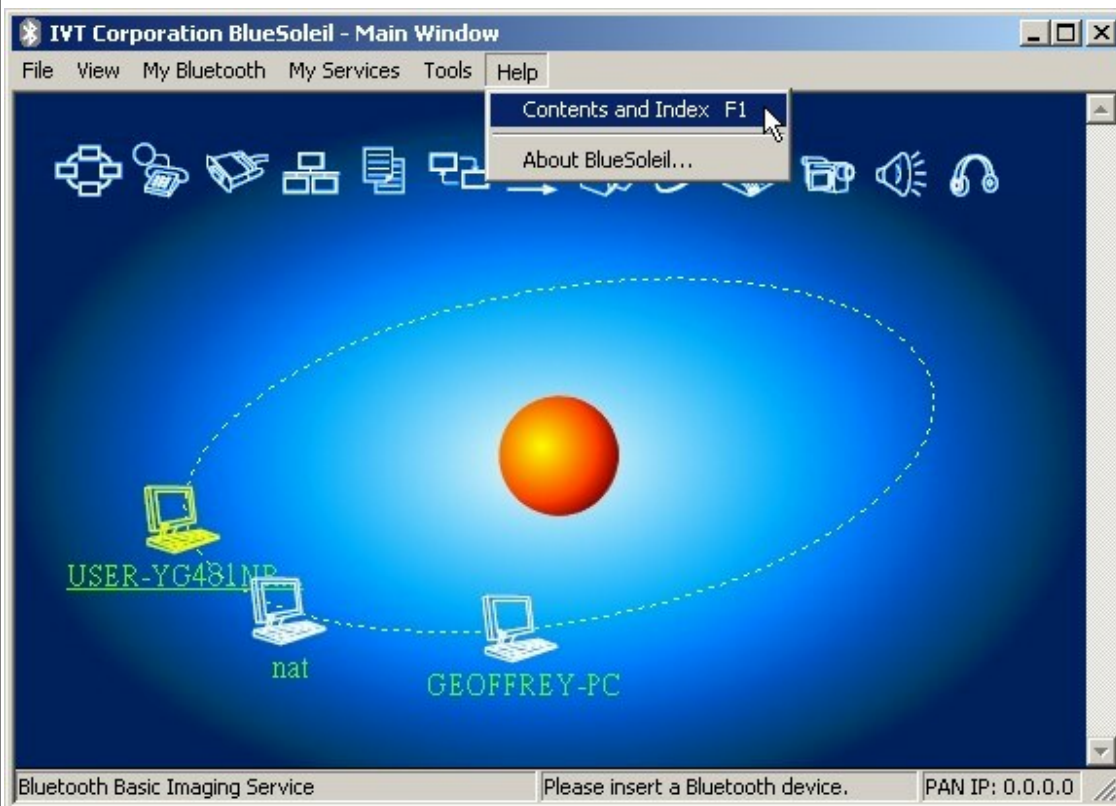
4. Start the connection software

Start the IVT BlueSoleil software



1. Please double click on the “BlueSoleil” icon from desktop to start the BlueSoleil software, or click from **Start → Programs → IVT BlueSoleil → BlueSoleil**.

2. Click on the red ball to start or stop searching for *Bluetooth* devices in range.



3. For more information about the BlueSoleil, please see its Online Help. You can start the Online Help by clicking **Help → Contents and Index** from main menu or press the F1 key.

5. Connecting device

Find Remote Devices

To set up a *Bluetooth* connection, the remote device must be found first. There are 3 ways to find remote devices in BlueSoleil.

Inquire Device

1. Single-click the red ball in the main window to start inquiry.
2. *Bluetooth* devices within the radio range will be shown around the center ball.
3. Wait for a few seconds until the names of all the devices are obtained.

Connect and Disconnect

Connect

1. Select a remote device and double click it to browse its services.
Bluetooth passkey may be asked if security level of either side is set to high and they are not paired devices.
After service browsing, the services the remote device supports are highlighted by changing the color of the service buttons on the top of the main window.
2. Single click one of the service button to connect.
After connection is setup, the remote device and the service button will turn green.

Note: Users can right click the remote device icon or the service button to pop up operation menu for connection.

Disconnect

- Method 1: Select the remote device, right click the service button. On the popup menu, select **Disconnect**.
- Method 2: Right click the device icon. On the pop-up menu, select **Disconnect | (the connection you want to disconnect)**.
- Method 3: For FTP and Synchronization connection, close the operation window, the connection will be disconnected.
- Method 4: Disconnect from the remote device directly.
- Method 5: If the local *Bluetooth* device is removed or the remote device is powered off, all the connections will be disconnected. If the remote device moves out of the radio range, all the connections with the remote device will be disconnected in 1 minute.

Pair / Un-pair Devices

Once a remote device has paired with your computer by exchanging passkeys, passkeys will no longer be required for further connections between your computer and the device.

How to pair with another device

- **Automatically**
If a passkey is required for connection, the devices will be paired automatically the first time they successfully exchange passkeys and connect. After a device has successfully paired

with your computer, the remote device icon in the Main Window will have a red checkmark next to it.

- **Manually**

In the Main Window, right click on the device icon, and in the pop-up menu, select **Pair Device**. In the **Enter *Bluetooth* Passkey** dialog, enter the same passkey that you enter on the remote device. After a device has successfully paired with your computer, the remote device icon will have a red checkmark next to it.

How to un-pair with another device

- **Manually**

In the Main Window, right-click on the device icon, and in the pop-up menu, select Unpair. The red checkmark next to the device icon will disappear.

AV Headphone

The AV Headphone Profile enables users to use a *Bluetooth* enabled headphone to listen high-quality stereo music played in a computer.

Typical Usage

- Listen to music using a *Bluetooth* enabled AV Headphone.

Steps:

1. Connect to AV Headphone.
2. Double click on the headphone icon to enable the connection, and then play music using media player software on your computer. Music will be transmit wirelessly to the headphone.

File Transfer

The File Transfer Profile (FTP) enables users to transfer files and/or folders between *Bluetooth* enabled laptops, desktops, PDAs, mobile phones, etc.

Typical Usage

- Connect to a *Bluetooth* enabled mobile phone and transfer files or folders to/from the phone.
- Share a folder on your computer with other *Bluetooth* enabled devices.
- Access a shared folder on another *Bluetooth* enabled device.

Connect to a Phone

Steps:

1. Connect to the phone's FTP service.
2. The phone's folders are shown in a window. Users can copy/paste/delete files or folders.

Share a Folder on Your Computer with other *Bluetooth* Enabled Devices

Steps:

1. Select the folder you would like to use for file sharing and define the remote user privileges. Click **My Services | Properties**. Click on the File Transfer tab.

Share this folder: Browse to select the folder you would like to share.

Share Permissions: Select Read and Write to allow others to copy, paste or delete files/folders in this folder. Select Read Only to allow others to only browse and copy files/folders from this folder.

2. Start the FTP service in BlueSoleil. Do not initiate the connection in BlueSoleil.
3. Browse your computer from the remote device. For instructions, refer to the user documentation for the remote device. When the remote device attempts to connect to your computer, the Bluetooth Service Authorization screen may appear. Click Yes.
4. After successfully connecting, the remote device can browse, copy, paste, and/or delete files on your computer, depending on the remote folder privileges you allowed. For instructions, refer to the user documentation for the remote device.

Access a Shared Folder on Another *Bluetooth* Enabled Device

1. On the remote device, designate the folder/files to share. Enable file sharing on the remote device. For instructions, refer to the user documentation for the remote device.
Note: *If you do not enable file sharing on the remote device, BlueSoleil will not be able to discover the device's file sharing service.*
2. Start the FTP service and initiate the connection in BlueSoleil.
3. A Remote Shared Folder screen will appear, displaying shared files/folders on the remote device, Use the screen to browse, copy, paste, and/or delete files, depending on your folder privileges.

Headset

The Headset Profile enables users to use a *Bluetooth* headset as wireless earplug or microphone.

Typical Usage

- Use Headset as a device for audio input/output.

Use Headset as Sound Input/Output Device

Steps:

1. Connect to the *Bluetooth* enabled headset.
2. Play music on your computer or chat using network meeting tools. You may need to press a multifunction button on your headset to transmit audio between the computer and the headset.

Note: *For most Bluetooth enabled headsets, after you have successfully connected for the first time, you can quickly reconnect to BlueSoleil by simply pressing a multifunction button on the headset.*

Federal Communications Commission (FCC) Statement

15.21

You are cautioned that changes or modifications not expressly approved by the part responsible for compliance could void the user's authority to operate the equipment.

15.105(b)

This equipment has been tested and found to comply with the limits for a Class B digital device, pursuant to part 15 of the FCC rules. These limits are designed to provide reasonable protection against harmful interference in a residential installation. This equipment generates, uses and can radiate radio frequency energy and, if not installed and used in accordance with the instructions, may cause harmful interference to radio communications. However, there is no guarantee that interference will not occur in a particular installation. If this equipment does cause harmful interference to radio or television reception, which can be determined by turning the equipment off and on, the user is encouraged to try to correct the interference by one or more of the following measures:

- Reorient or relocate the receiving antenna.
- Increase the separation between the equipment and receiver.
- Connect the equipment into an outlet on a circuit different from that to which the receiver is connected.
- Consult the dealer or an experienced radio/TV technician for help.

Operation is subject to the following two conditions:

- 1) this device may not cause interference and
- 2) this device must accept any interference, including interference that may cause undesired operation of the device.

FCC RF Radiation Exposure Statement:

This equipment complies with FCC radiation exposure limits set forth for an uncontrolled environment. End users must follow the specific operating instructions for satisfying RF exposure compliance. This transmitter must not be co-located or operating in conjunction with any other antenna or transmitter.