

GS-4303

Getting You There!



User Manual v1.0

Table of Contents

1. Cautions
2. Package Contents
3. Product Features
4. Product Specifications
5. Product Overview
6. Getting Started
 - 6.1 Charging the Battery
 - 6.2 Car Mount Installation
7. Software Instructions
 - 7.1 Main Menu
 - 7.2 Settings
 - 7.2.1 Nav. Setup
 - 7.2.2 GPS Status
 - 7.2.3 Emend T-Scr
 - 7.2.4 Backlight
 - 7.2.5 Language
 - 7.2.6 Volume
 - 7.2.7 Time
 - 7.2.8 System
 - 7.2.9 Skin
 - 7.3 Music Player
 - 7.4 Photo Viewer

7.5 Movie Player

7.6 Bluetooth Car Kit (optional)

8. AVIN

9. Troubleshooting

10. FCC Notices

1. Cautions

- One should not carry out any operation which could impair safety while driving or cycling.
- As for the operation of this product in the aircraft, please consult the aviation company first of all. Special care should be taken when an electronics device is engaged during a flight.
- Never get closer to a place emitting intensive radio waves or radiation which could affect the operation of this product.
- Never make the navigator fall down or clash with stiff objects to project it against any damage in appearance, battery loose, data lose or other hardware mutilation.
- Never let this product expose to the humid environment or rain as the water leaked into could disable it to the extent beyond reparation.
- Never switch on this product in the dusty environment.
- Over-voltage, power cable strain, bending or squeezing by heavy objects is not allowed to avoid overheating or fire disaster.
- Never deploy any chemical or detergent to clean up the navigator to prevent erosion of the surface or paintwork.
- In order to eliminate the risk of electric shock, do not touch the cable power plug with wet hands and do plunge it into the socket completely.
- Never charge the battery in a neither extreme cold nor hot place, which could damage the battery.
- Keep this product which is being charged out of the reach of children.
- Never put it under the direct baking sunshine or place it in a place with high temperature to avoid the problem of over-heat to the battery or this product, which could trigger fault or danger.
- Put this product on an even workbench instead of blanket, pillow or carpet which could build up the heat to a level so high to bring forth damage.
- When any sort of fault comes into being, please contract with qualified maintenance personnel for service rather than disassemble it at your own discretion.
- Keep all the wires in neat order to prevent damage-fostering tangling.
- Never suppress the LCD screen violently. Never bring it to the open glaring sunshine, which could damage this product. Please wipe the screen surface clean with soft cloth.
- Never cut off the power directly in the mode of navigation, music, video and image browse, which could lose data.
- When the system is reading data from or writing date into the memory card, never take out the card directly which could make the information stored in the memory card corrupted or lost or even crash the system.
- In the process of formatting, upload or download, never disconnect the power supply abruptly. Otherwise, it could lead to a problem of application error.

- Pay attention to the compatibility of multimedia files and the product can only play back the files in the stipulated formats.
- All the TV programs, music, movies and images are under the protection of copyright. Unauthorized usage is deemed as an infringement to the laws of copyright.
- For the sake of data safety, please back up the data on the SD/MMC card into the computer on a regular basis.
- Do not adjust the volume of speaker to maximum for a long time. Otherwise, it will cause audio distortion.
- The pictures presented in this manual are only for reference.

2. Package Contents

Items	Quantity
GPS Navigator	1
Car Charger	1
Car Mount	1
USB Cable	1
CD ROM	1
Printed User's Manual (option)	1
AC Charger (option)	1
TMC Antenna (option)	1
Earphone (option)	1

3. Product Features

- 4.3-inch high brightness touch screen
- Stereo earphone jack
- 1.5W build-in speaker
- Build-in high sensitivity GPS receiver
- Build-in GPS antenna

- SD/MMC card slot for up to 2GB memory cards
- Music Player for WMA, WAV, and PCM formats
- Video Player for ASF and WMV formats
- Photo Viewer for BMP, JPG, PNG, and GIF formats
- E-book for TXT format
- AVIN for car rear camera
- Bluetooth for car kit function (optional)
- TMC (optional)
- Rechargeable lithium battery
- Full speed USB 1.1 interface
- LED Indicator for power status

4. Product Specifications

Environment Parameters	
Size	128mm(L) x 83mm (W) x 20mm (H)
Weight	210g
Working Temperature	-10°C ~ +60°C
Storage Temperature	-20°C ~ +70°C
Working Humidity	30% ~ 80%RH
Storage Humidity	30% ~ 90%RH

System Parameters	
Main Frequency	266 MHz
Processor	Samsung S3C2413
ROM Memory	1GB
External SD Card	Up to 2GB
Operation System	WinCE 5.0 Core Version

Basic Parameters	
Video Input Type	CVBS
Display	4.3" TFT LCD Touch Screen / 480x272
Speaker Power	1.5W @ 8ohm
Battery Type	Build-in 780mAH Rechargeable Lithium Battery
Battery Life	2 Hours

GPS Hardware Parameters	
Chipset	Mstar
Frequency	1.575GHZ
C/A CODE	1.023 MHZ chip rate
Channel	12 Channels
Tracking Sensitivity	-161dBm
Positioning Sensitivity	10m, 2D RMS 5m, 2D RMS, WAAS enable
Speed Rate	0.1m/s
Data Update Rate	1HZ
Recapture Time	0.1s on Average
Hot Start	< 3 seconds
Warm Start	< 38 seconds
Cold Start	< 100 seconds
Maximum Altitude	18,000m
Maximum Speed	515m/s
Acceleration	< 4g
Build-in Antenna Type	Build-in Active Ceramic Antenna
Build-in Antenna Gain	27dB
Build-in Antenna Voltage	3.3V±5%
Build-in Antenna Current	15mA

Bluetooth Parameters (Optional)	
Maximum Distance	10m
Communication Type	V1.2 / Class 2
Handfree Type	Full Duplex Transmission
Chipset	CSR BLUECORE3

5. Product Overview



Power LED

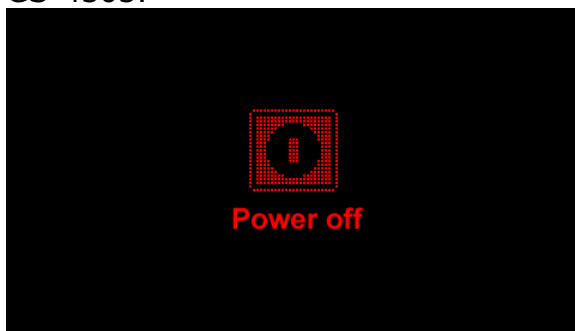
Amber light means the battery is recharging and green light means battery is fully recharged.

Menu Button

Press the "MENU" button to return to the main menu.

Power Button

Press and hold the Power Button for three seconds to turn on or turn off the GS-4303.



Key Lock Switch

Push the switch up or down to lock or unlock the function keys and touch screen operation.



Volume Control Wheel

Roll the wheel up or down to adjust the volume of the speaker.

Earphone Jack

Plug in earphone here.

AVIN Jack

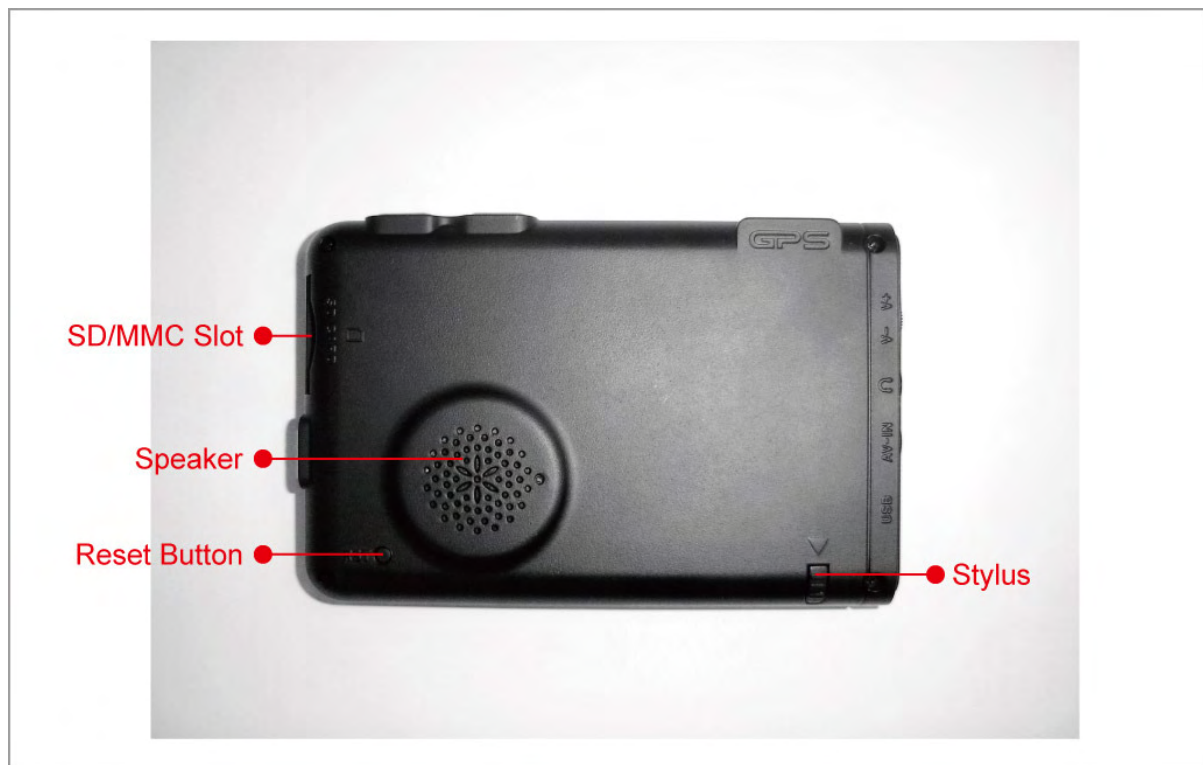
Plug in rear cam here.

USB Jack

Plug in USB cable here.

Microphone

Audio input for car kit function.



SD/MMC Slot

Plug in SD card here.

Reset Button

Press the Reset Button to restart the device.

Stylus

Speaker

Device audio output.

6. Getting Started

6.1 Charging the Battery

There are three methods to charge the GS-4303.

- Charge by Using the Car Charger

Connect the GS-4303 to car cigarette lighter by the car charger provided.

- Charge by Using the AC Charger

Connect the GS-4303 to wall outlet by the AC charger provided.

- Charge by Using the USB Cable

Connect the GS-4303 to PC by the USB cable provided.

NOTE: Before using the GS-4303, please charge the battery for more than 5 hours to get the best battery performance.

6.2 Car Mount Installation

- Attach the GS-4303 to the bracket provided.
- Attach the bracket to the cradle provided.
- Clean up the windshield with a dry clean cloth.
- Place the suction cup on the windshield and flip the lever to fix the cradle on the windshield.
- Loose the swivel screws to adjust the GS-4303 to the proper position, and then tighten the swivel screws.


7. Software Instructions

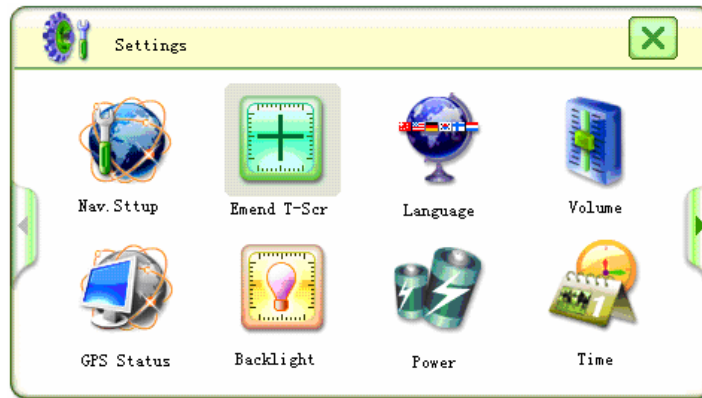
7.1 Main Menu

After the device is boot up, the Main Menu will show on the screen.



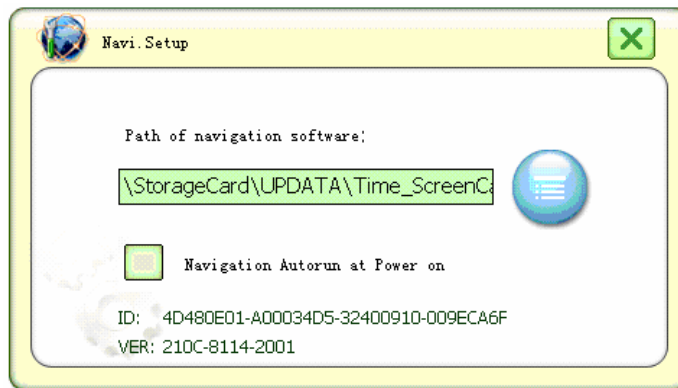
7.2 Settings


Click the icon  to enter the Settings Menu.

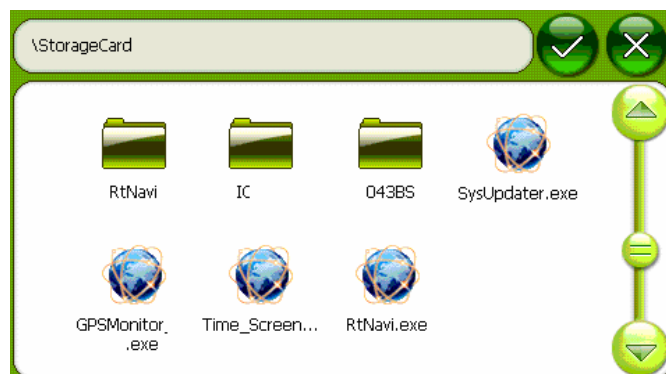


7.2.1 Nav. Setup


- Click on the icon  to enter the Navi Setup Menu.





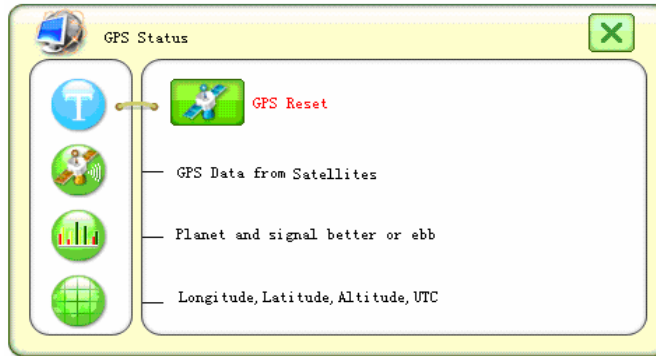
- Click on the icon  to set the path of navigation software.
- Check the box on the screen to activate navigation auto-run.




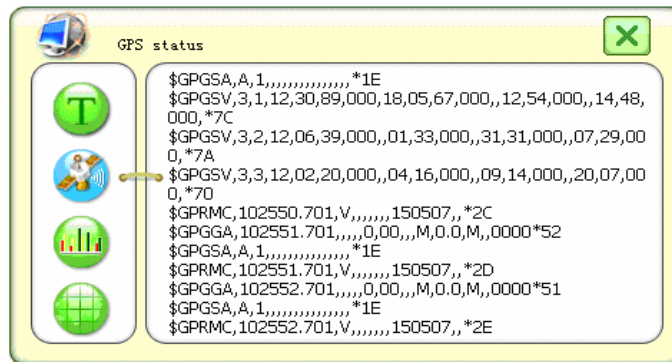
7.2.2 GPS Status

➤ Click on the icon  to enter the GPS Status Menu.

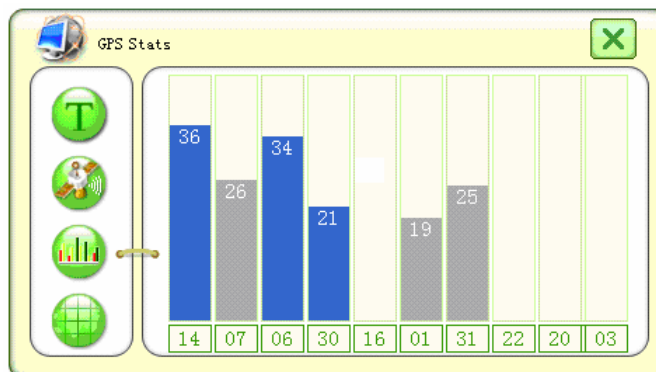
➤ Click on the icon  to reset the GPS receiver by clicking on the icon .




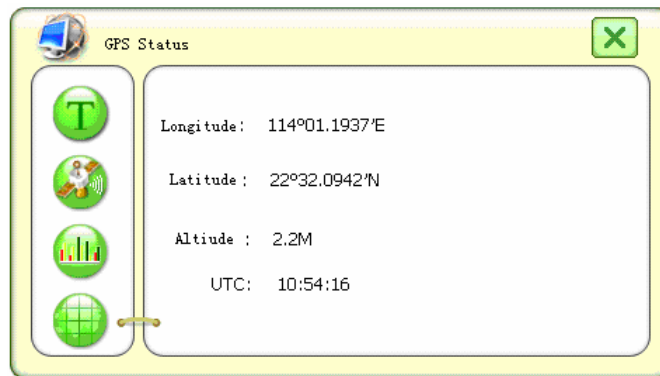
➤ Click on the icon  to view the NMEA data streams.




➤ Click on the icon  to view the satellite signal status.

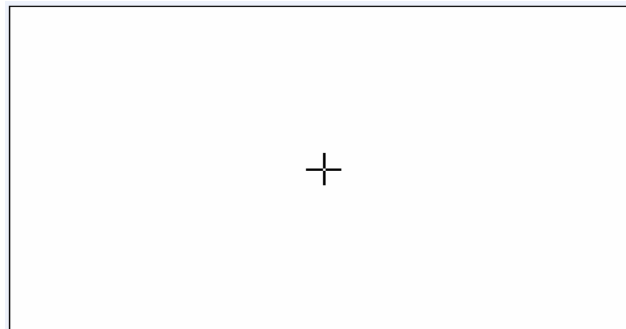


➤ Click on the icon  to view the longitude, latitude, altitude, and time.




7.2.3 Emend T-Scr

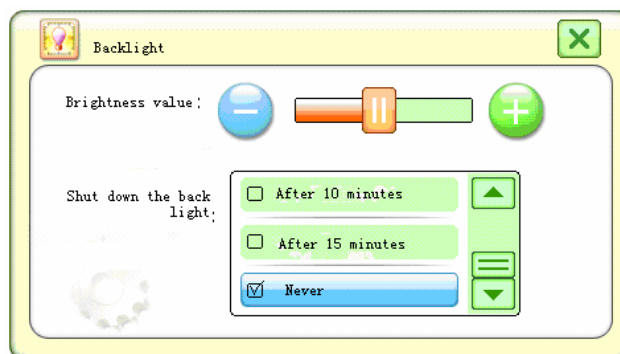
- Click on the icon  to start the touch screen calibration.



- Click on the cross mark on the screen to do the calibration.

7.2.4 Backlight


- Click on the icon  to enter the Backlight Setting Menu.

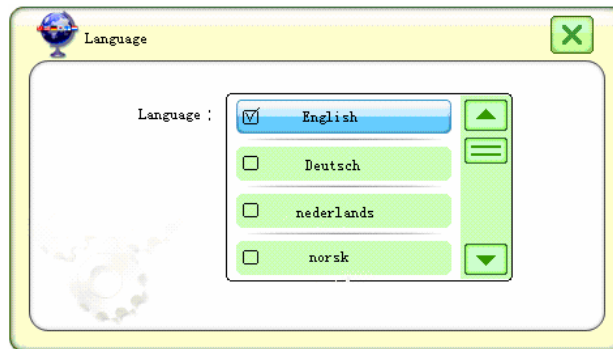


- Adjust the backlight brightness level by moving the Brightness Value Bar.
- Select the backlight power saving criteria by clicking on any of the

selections on the screen. If the device is idled longer than the criteria, the backlight brightness level will be changed to minimum brightness level automatically.


7.2.5 Language

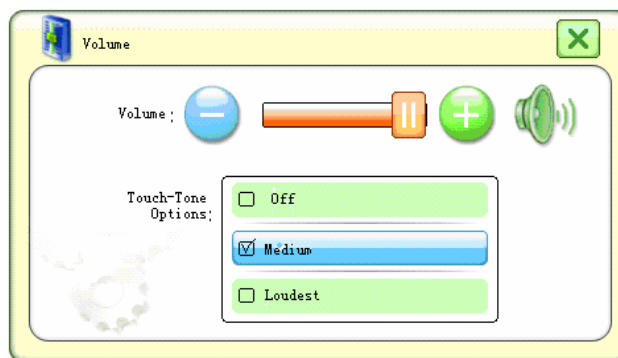
- Click on the icon  to enter the Language Setting Menu.



- Select the language you would like to use by moving the bar and clicking on any of the selections on the screen.


7.2.6 Volume

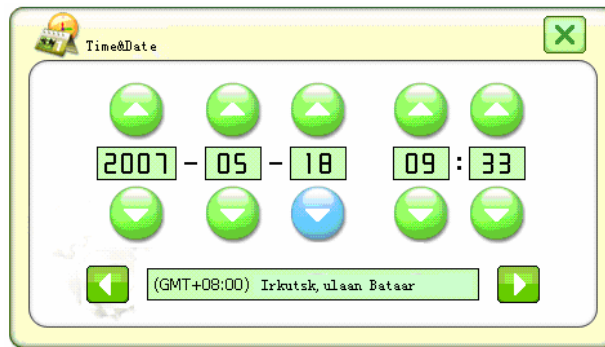
- Click on the icon  to enter the Volume Setting Menu.



- Adjust the volume level by moving the Volume Bar.
- Set the touch tone volume by clicking on any of the selections on the screen.


7.2.7 Time

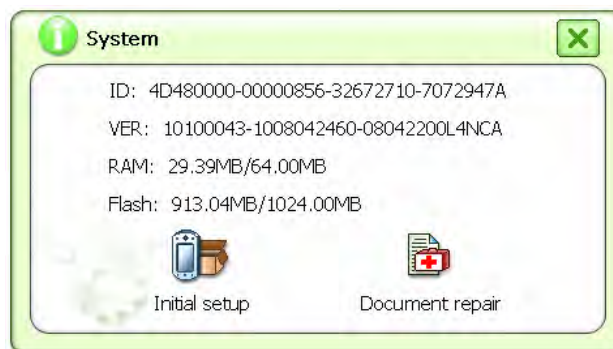
- Click on the icon  to enter the Time Setting Menu.



- Adjust the time by clicking on the Up/Down icons on the screen. Select the time zone by clicking on the Right/Left icons below.


7.2.8 System

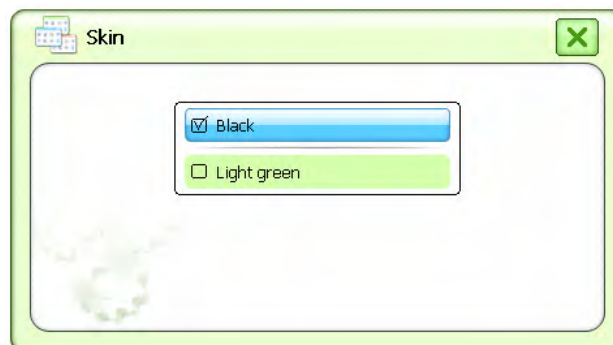
- Click on the icon  to enter the System Information Menu.



- The menu shows the device ID, software version, RAM status, and flash memory status.

7.2.9 Skin

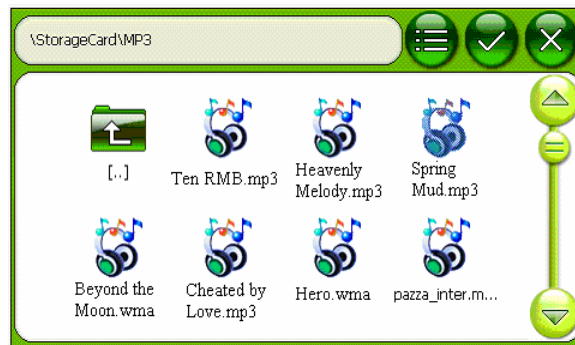
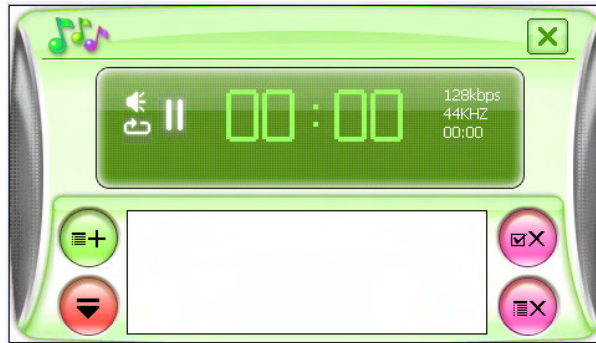
- Click on the icon  to enter the Skin Setting Menu.




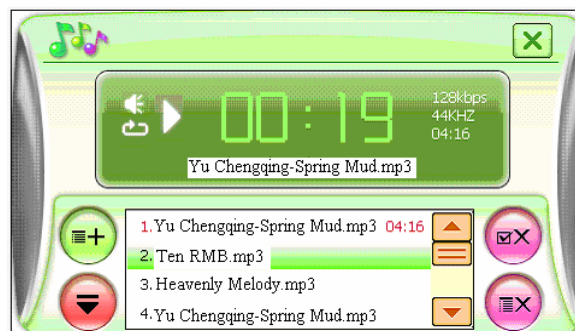
- Select the skin style by clicking on one of the selections on the screen.

7.3 Music Player


- Click on the icon  to start the Music Player.




- Click the icon  to select all audio tracks in the directory or double click on one of the audio tracks in the directory to add it to the playlist.




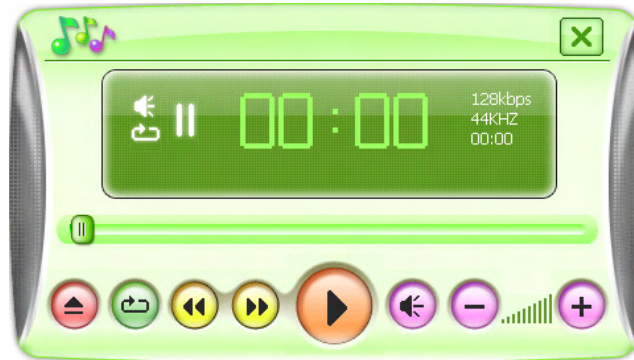
Function Icons Description:

- Click on the icon  to add audio tracks to the playlist.


Click on the icon  to delete selected audio track from the playlist.


Click on the icon  to delete all audio tracks from the playlist.


Click on the icon  to switch between the Playlist Edit Console and Music Player Console.





Function Icons Description:

Click on the icon  to pause.

Click on the icon  to go to next audio track.

Click on the icon  to go to previous audio track.

All tracks in the playlist will be played repeatedly if the icon  showed.

All tracks in the playlist will be played randomly if the icon  showed.

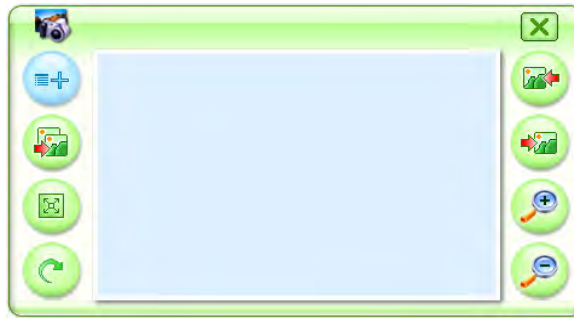
Click on the icon  to mute the speaker.


Click on the icon  to resume the sound.

Click on the icon  to adjust volume.








7.4 Photo Viewer

➤ Click on the icon  to start the Photo Viewer.



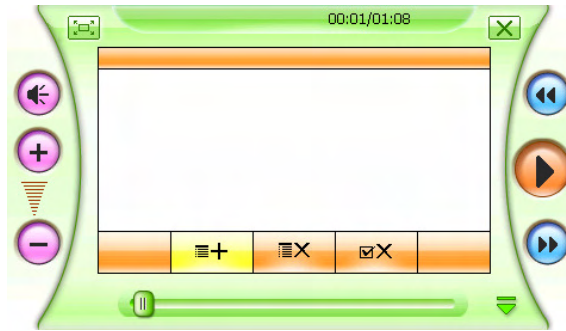
- Click on the icon  to select the directory of images.


Function Icons Description:

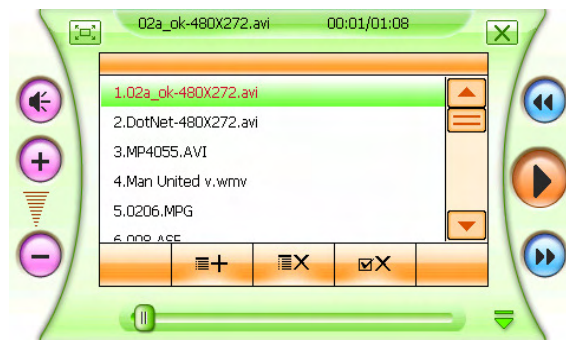
- Click on the icon  to switch to full screen mode.
- Click on the icon  to go to previous image.
- Click on the icon  to go to next image.
- Click on the icon  to start slide show.
- Click on the icon  to zoom out.
- Click on the icon  to zoom in.
- Click on the icon  to rotate the image 90° clockwise.

7.5 Movie Player


- Click on the icon  to start Movie Player.




- Click the icon  to select all video clips in the directory or double click on one of the video clips in the directory to add it to the playlist.





Function Icons Description:


Click on the icon  to add video clips to the playlist.


Click on the icon  to delete selected clip from the playlist.


Click on the icon  to delete all clips from the playlist.


Click on the icon  or double-click the clip to start playing.

Click on the icon  to switch to full screen mode.

Click on the icon  to mute the speaker.

Click on the icon  to resume the sound.

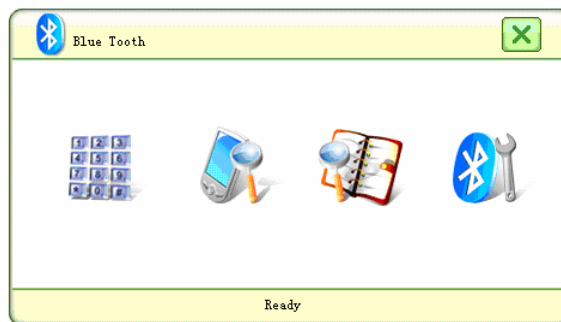
Click on the icon  to go to next video clip.


Click on the icon  to go to previous video clip.

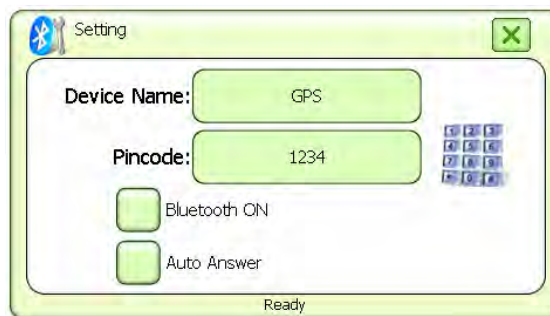
Click on the icon  to adjust volume.

7.6 Bluetooth Car Kit (optional)

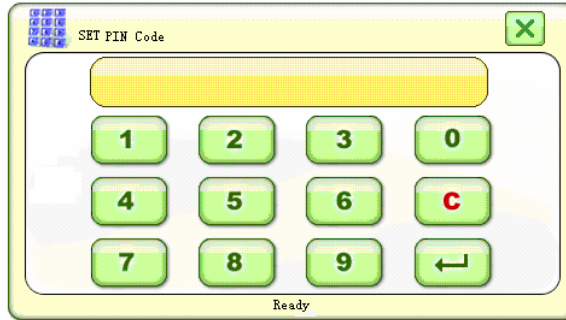
- Click on the icon  to enter Bluetooth Menu.



- Click on the icon  to enter the Bluetooth Setting Menu.



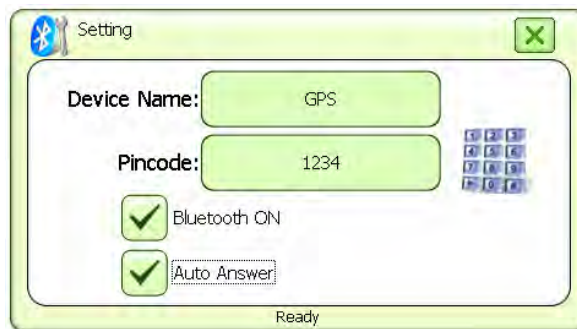
- Click on the icon  to change Pincode.



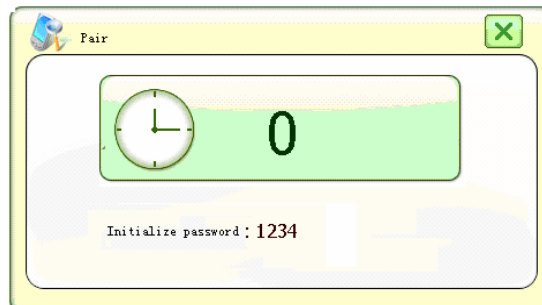
- Check the Bluetooth ON Box to enable Bluetooth function.




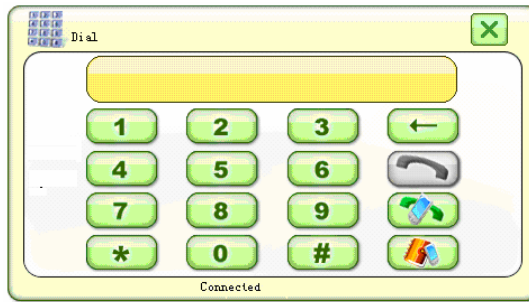
- Check the Auto Answer Box to enable auto answer function.



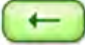



- Click on the icon  to start pairing.



- Connect your phone with the GS-4303. Once the connection is established successfully, click on the icon  in the Bluetooth Menu to start Dial Pad.






Function Icons Description:

-  Backspace
-  Dial
-  Redial
-  Call Record

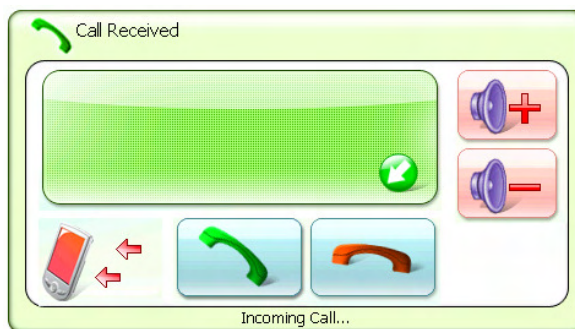
- Click on the icon  in the Bluetooth Menu to enter Paired Device Management Menu.

Function Icons Description:

-  Connect to selected device
-  Disconnect the existing Bluetooth connection
-  Delete all paired devices

The GS-4303 will search and connect automatically to the last paired device only.

- The following menu will show while a call is incoming.



Function Icons Description:



Answer a phone call

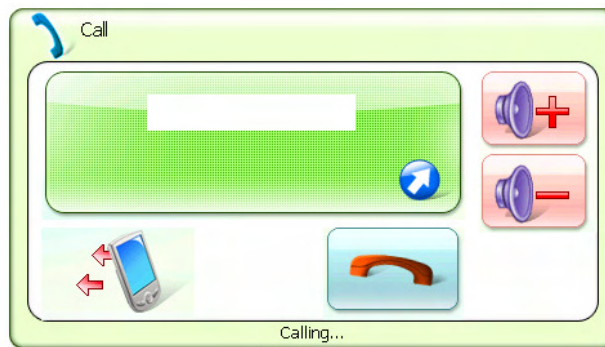


Reject a phone call



Adjust volume

- The following menu will appear while calling.



Function Icons Description:



Hang up the phone

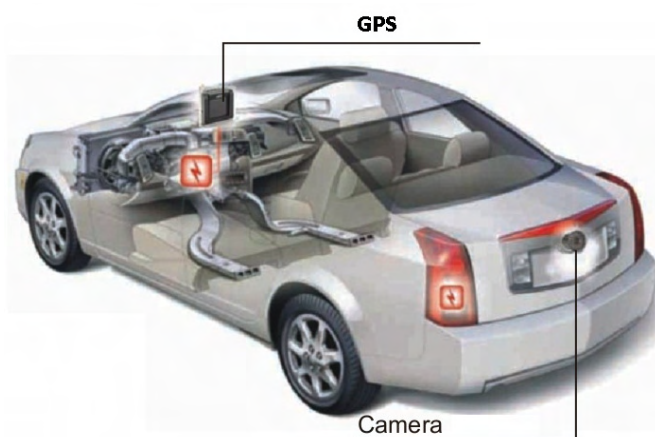


Adjust volume

NOTE: The Bluetooth device is only for the hands-free Bluetooth telephone, and does not support the Bluetooth data transmitting and other functions.

8. AVIN

The AVIN port is used for car rear camera. Just plug the rear cam cable into the AVIN port of the GS-4303. Once the video signal is detected by the GS-4303, the image will be shown on the display automatically.



9. Troubleshooting

Problem	Solution
My GS-4303 cannot get GPS signals.	Take your GS-4303 outdoors and away from tall buildings and trees. Remain stationary for several minutes to get the necessary GPS information from satellites.
The suction cup cannot stay on my windshield.	Clean the suction cup and windshield with a clean, dry cloth. Then mount the suction cup as described in section 7.2.
I cannot turn on my GS-4303.	<ol style="list-style-type: none"> 1. Check if the key lock is activated. 2. Check if the battery is charged.
The touch screen is responding to my taps properly.	Press and hold the Menu Key for three seconds and then calibrate the touch screen.
My phone cannot connect to my GS-4303.	Make sure the Bluetooth on both your phone and the GS-4303 is turned on. Follow the instructions in section 8.6.
My computer cannot access data from my GS-4303.	Check if the USB driver is installed. If it is installed, please uninstall the USB driver and install it again by following the instructions provided.
The AVIN function is not working.	Make sure the cable is fully plugged in the correct jack.
The system encounters fatal errors and crashed.	Push the reset button to restart the system.
The images or audio tracks or video clips cannot be played on my GS-4303.	Please check page 5 to see the media formats supported by the GS-4303.

10. FCC Notices

This device complies with Part 15 of the FCC rules. Operation is subject to the following two conditions:

- (1) This device may not cause harmful interference, and
- (2) This device must accept any interference received, including interference that may cause undesired operation.

FCC RF Exposure requirements:

This device and its antenna(s) must not be co-located or operation in conjunction with any other antenna or transmitter.

NOTE: THE MANUFACTURER IS NOT RESPONSIBLE FOR ANY RADIO OR TV INTERFERENCE CAUSED BY UNAUTHORIZED MODIFICATIONS TO THIS EQUIPMENT. SUCH MODIFICATIONS COULD VOID THE USER'S AUTHORITY TO OPERATE THE EQUIPMENT.