



Display Plug User Manual

v01

By Ellin@GTI-EE

2011-6-24

Table of Contents

- 1 Getting Start with the Display Plug (Ellin)
 - 1.1 Console Access
 - 1.2 Remote Access with Secure Shell(SSH)
 - 1.3 Using Kerboard,Mouse and VGA/HDMI display
- 2 Software Upgrade
- 3 Use the GUI terminal

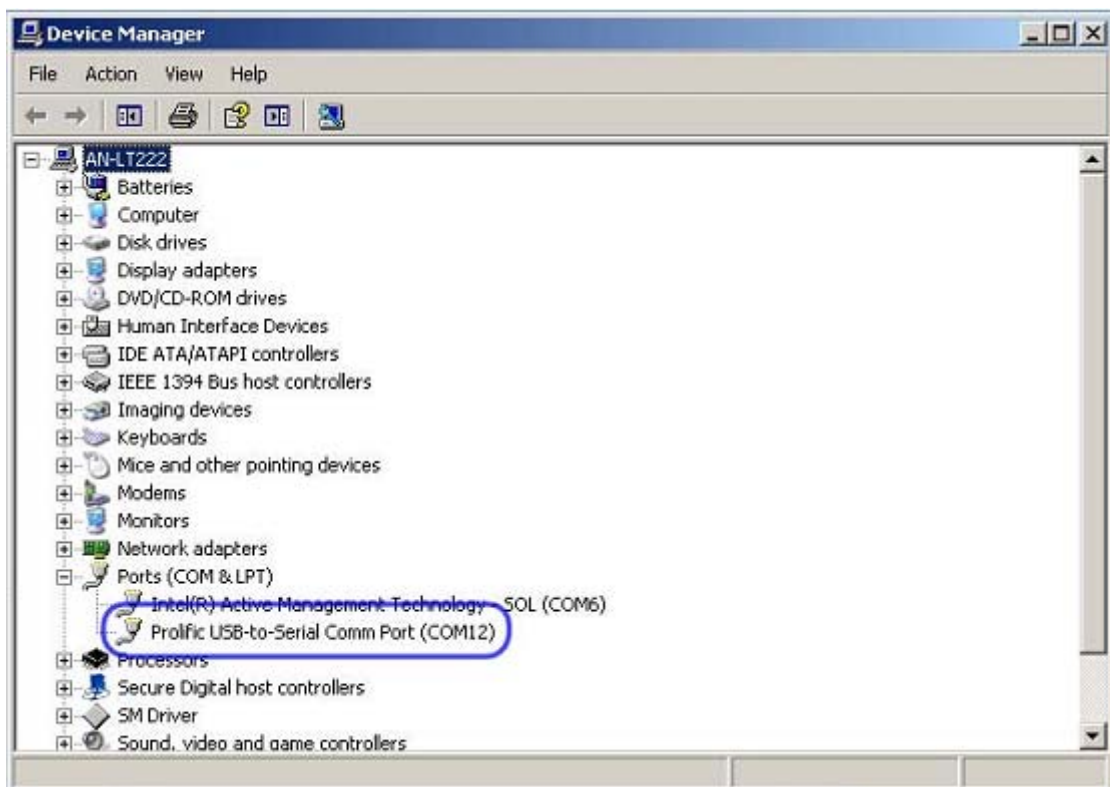
1. Getting Start with the Display Plug

1.1 Console Access

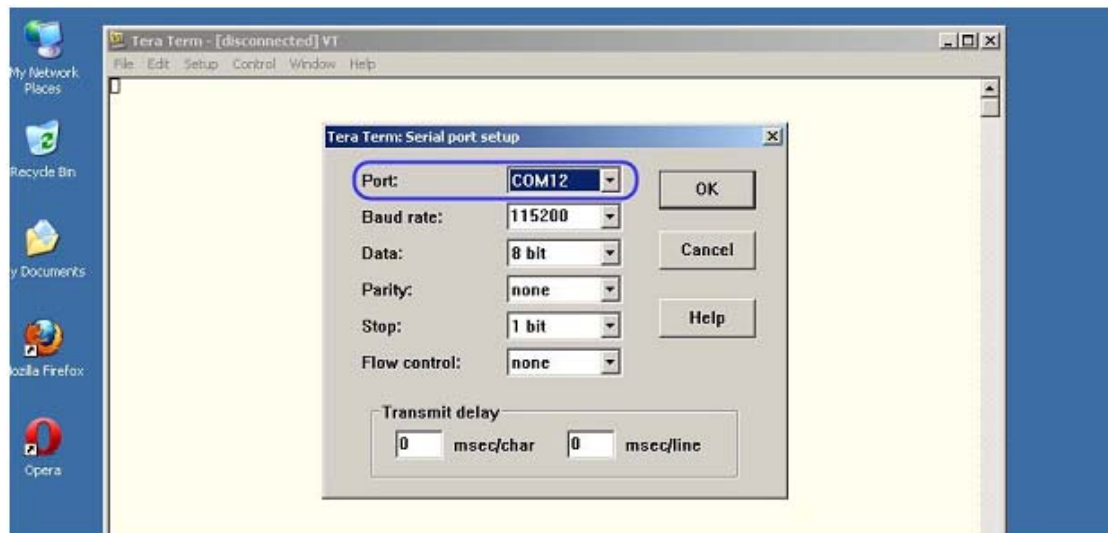
The Display Plug utilizes the Prolific PL2303HX(D) chip , a USB-to-serial Bridge, to hook up the UART0 of Dove as a debug console, and this console is available at a USB Micro-AB socket(J16).

Following steps assume a Host running Windows XP with PL2303HX(D) driver loaded and a terminal program such as Hyper Terminal and Tera Term. Visit www.prolific.com.tw for the latest PL2303HX(D) driver.

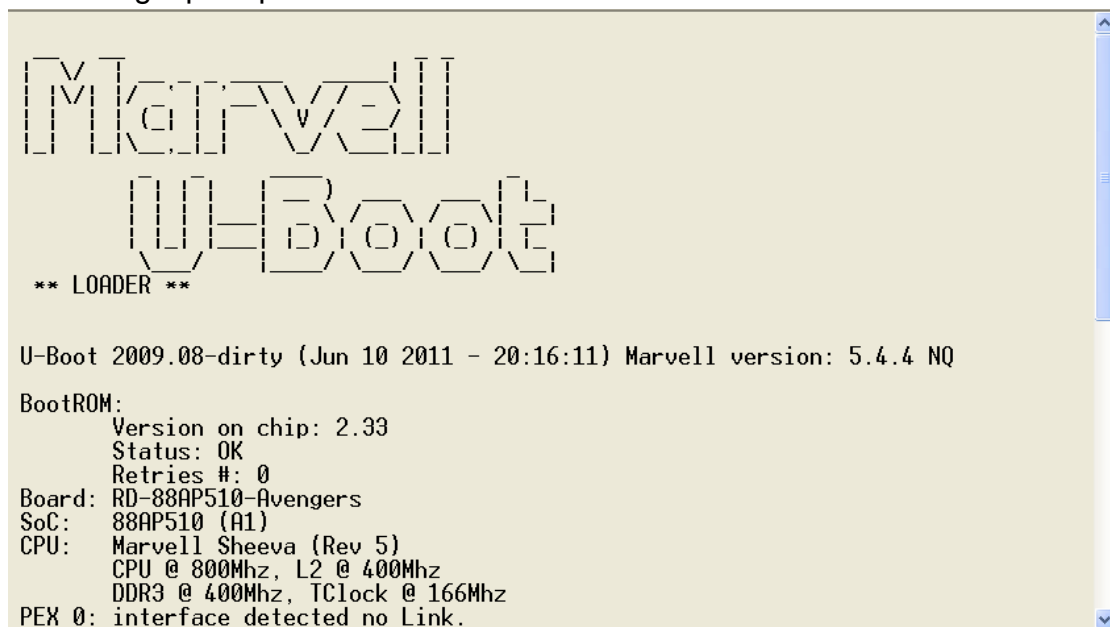
1. Plug one end of the USB Micro-AB cable to the console port(J16) of Display Plug, the other end to the Host.
2. Wait for Windows Host to enumerate the PL-2303 device and load its driver
3. Go to the Device Manager(Start Menu->Settings->Control Panel->System->Hardware->Device Manager). Expand the Ports(COM and LPT) drop-down and note the COM port assigned to the PL-2303(see below figure)



4. Launch Hyper Terminal or Tera Term in Host and Choose the COM port that assigned the PL2303 device. Change the baud rate to 115200, data to 8 bit and parity to none. Click "OK" to apply the settings.



5. Power on the Display Plug, start-up messages scroll by as Linux boots until the login prompt is reached



(Figure,Uboot Start-up)

6. Login the Display Plug as ubuntu/marvell

```
Ubuntu 10.04.2 LTS ubuntu-laptop ttyS0
ubuntu-laptop login: ubuntu
Password: marvell
Last login: Sun Oct 17 00:01:02 EDT 2010 on ttyS0

Linux ubuntu-laptop 2.6.32.9-dove-5.4.2 #24 Fri Jun 10 19:39:45 IST 2011 armv7l
GNU/Linux
Ubuntu 10.04.2 LTS

Welcome to Ubuntu!
 * Documentation:  https://help.ubuntu.com/

135 packages can be updated.
87 updates are security updates.

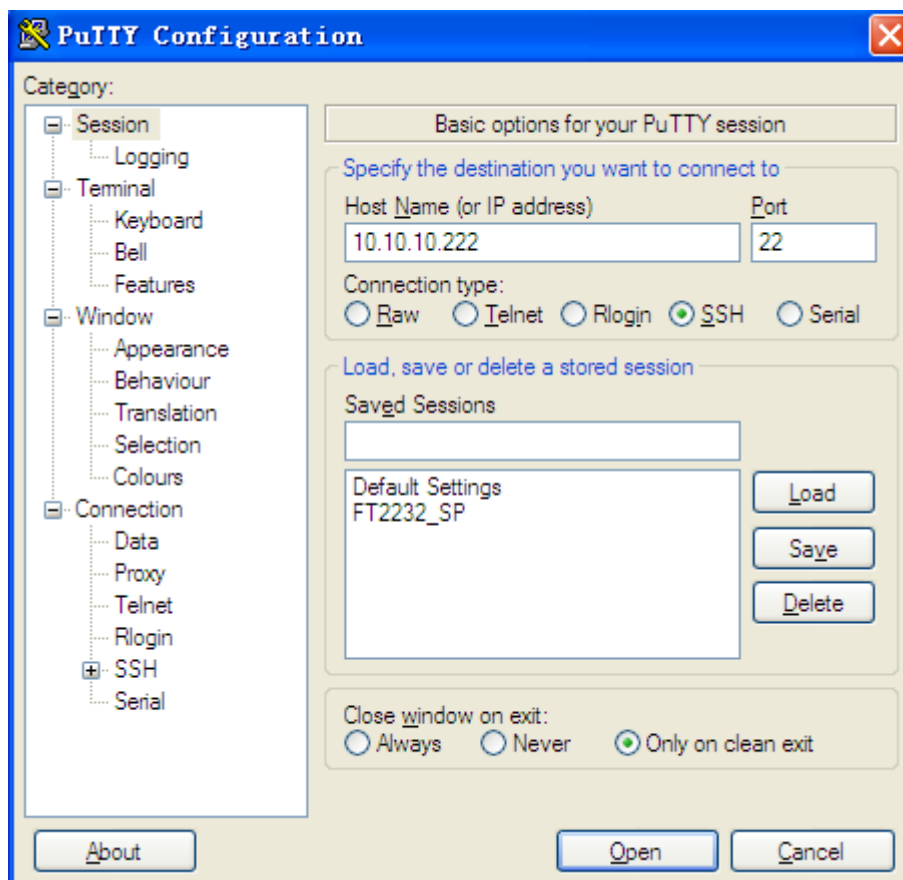
ubuntu@ubuntu-laptop:~$
ubuntu@ubuntu-laptop:~$
```

(Figure, Linux Login)

1.2 Remote Access with Secure Shell(SSH)

Secure Shell(SSH) can be used to access the Display Plug when it is connected to a wired or wireless network. Following procedures assume either that the Plug is reconfigured to a static IP address or that it is dynamically assigned to a IP address from a DHCP server.

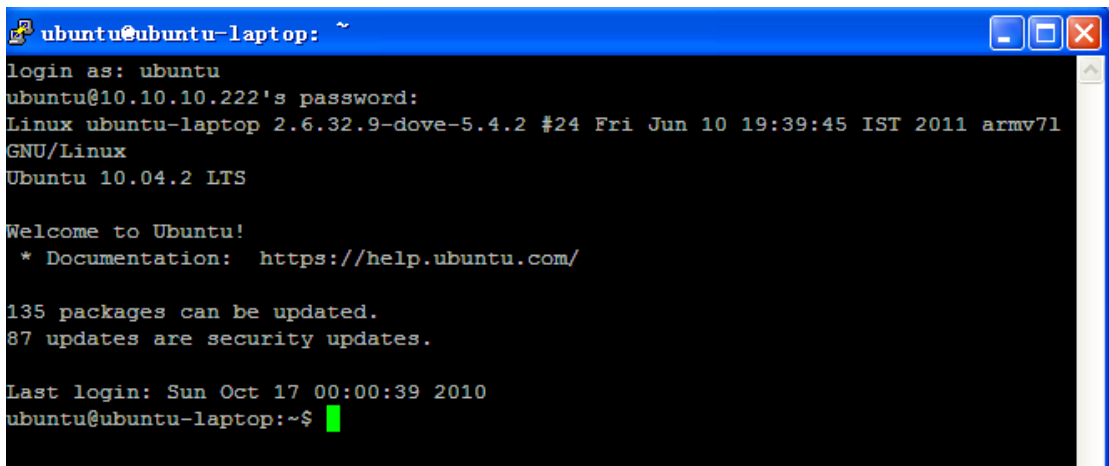
1. Launch a SSH software like Putty in the Windows Host, enter the Plug’s IP address, and select SSH connection type.



If it is the first time to SSH to the Plug, there will be a security alert, press “y” to forward.



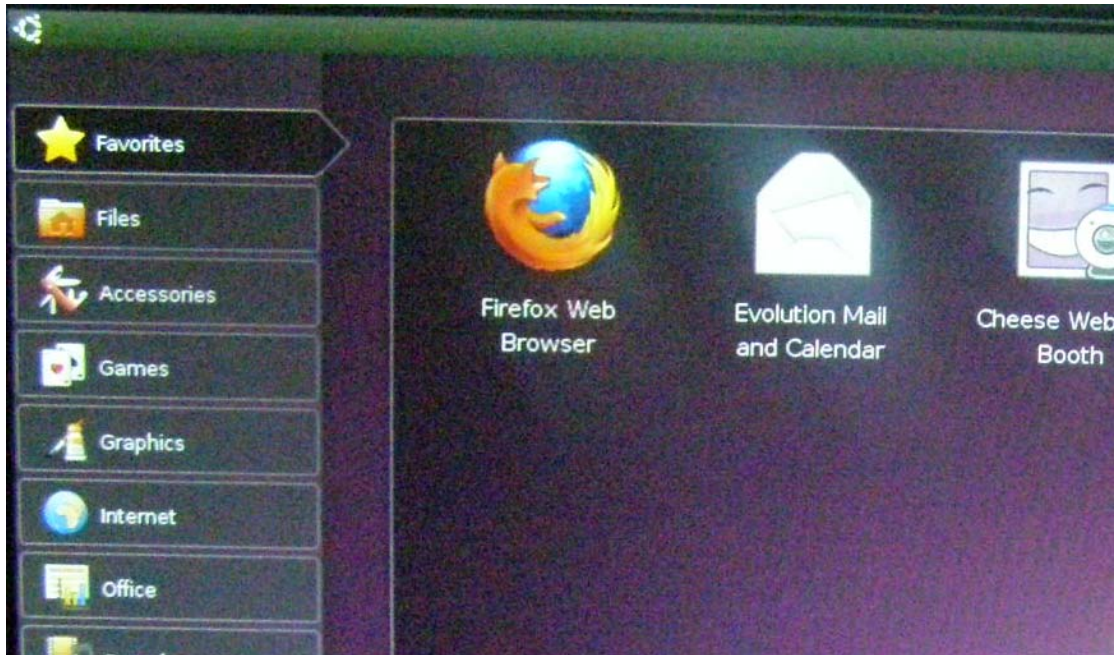
2. Login the Plug as ubuntu/marvell as follow



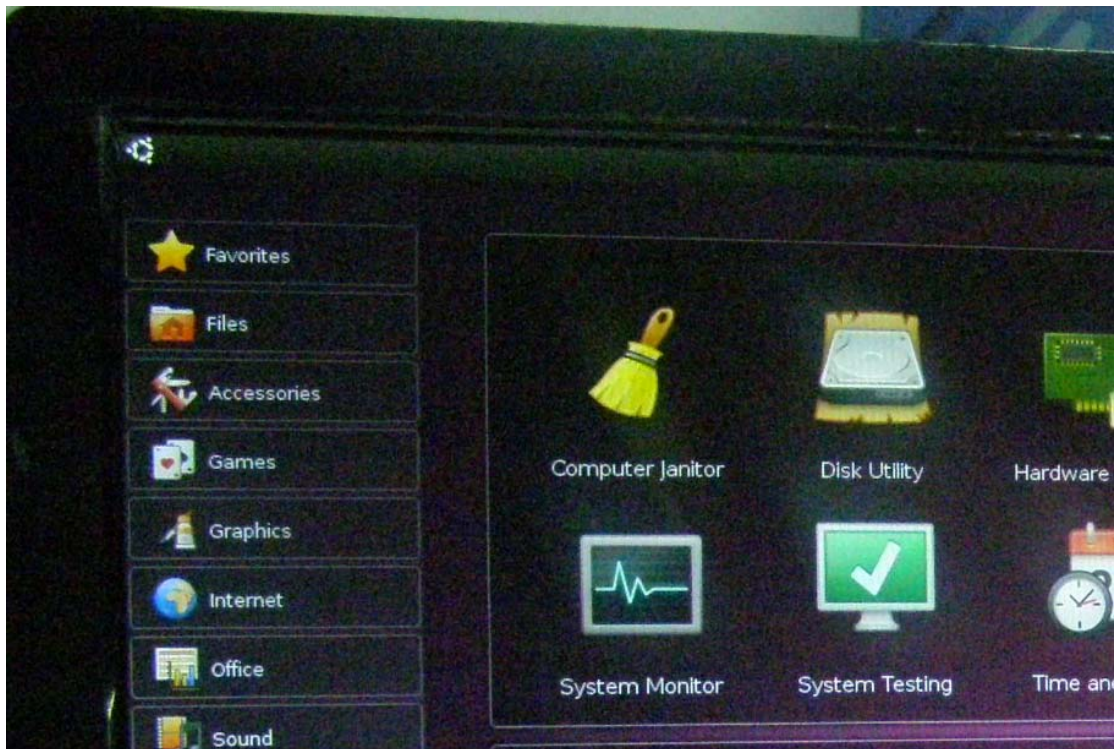
1.3 Using Keyboard, Mouse and VGA/HDMI display

With a network connection (WiFi or Ethernet cable), keyboard, mouse and flat panel display (HDMI or VGA), the Display Plug can be used as a standalone Linux machine. Follow these steps to boot the Display Plug and use the Linux desktop.

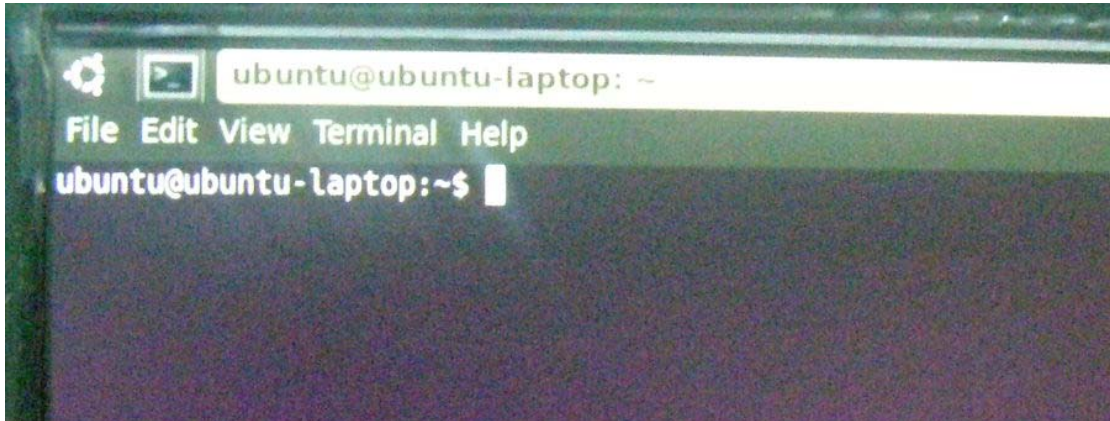
1. Plug in a USB mouse, USB keyboard and a flat panel display (HDMI or VGA monitor) to appropriate port. Connect a Ethernet CAT5/6 cable to a wired network if required
2. Turn on the monitor and then power on the Display Plug.
3. Waiting about 50 seconds, the desktop will show up as below:



2. Use the mouse and keyboard to browse or change the system settings:



3. Use the GUI terminal



=====
FCC NOTE:

This equipment has been tested and found to comply with the limits for a Class B digital device, pursuant to Part 15 of the FCC Rules. These limits are designed to provide reasonable protection against harmful interference in a residential installation. This equipment generates, uses and can radiate radio frequency energy and, if not installed and used in accordance with the instructions, may cause harmful interference to radio communications. However, there is no guarantee that interference will not occur in a particular installation. If this equipment does cause harmful interference to radio or television reception, which can be determined by turning the equipment off and on, the user is encouraged to try to correct the interference by one or more of the following measures:

- Reorient or relocate the receiving antenna
- Increase the separation between the equipment and receiver.
- Connect the equipment into an outlet on a circuit different from that to which the receiver is connected.
- Consult the dealer or an experienced radio/TV technician for help.

This device complies with Part 15 of the FCC Rules. Operation is subject to the following two conditions:(1)this device may not cause harmful interference, and (2) this device must accept any interference received, including interference that may cause undesired operation.

The manufacturer is not responsible for any radio or TV interference caused by unauthorized modifications to this equipment. Such modifications could void the user's authority to operate the equipment.

=====