

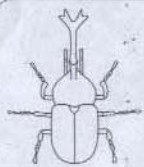
# MANUAL FOR THE DUNG BEETLE

NO.777-016



You are welcomed to purchase our products and pleased to play and use them correctly after you have read this manual carefully. Of course, it is convenient for you when you keep this manual better.

## 1 Part's Name



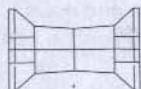
Body



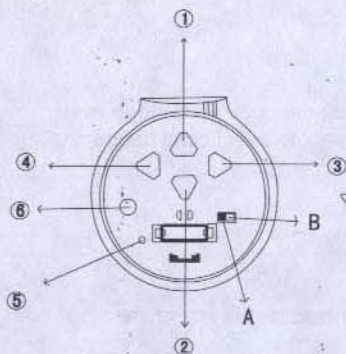
Controller



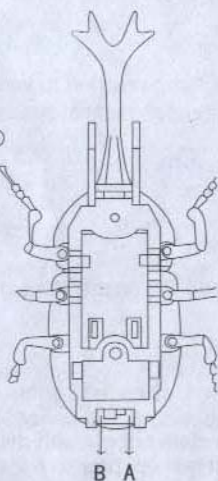
Antenna



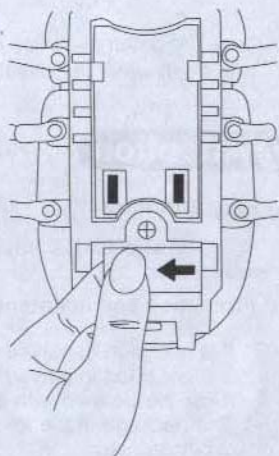
Tree



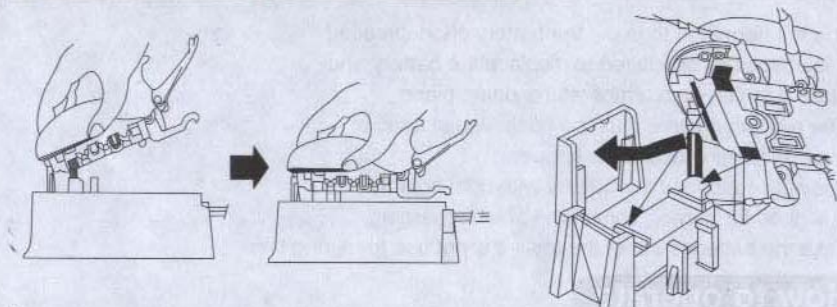
- ① Forward
- ② Backward
- ③ Turn right
- ④ Turn left
- ⑤ Indicator light of charge
- ⑥ Feeler rise/down



Please take out the film in the battery box, before you used!

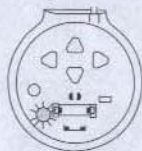


## 2 How to charge the battery

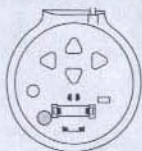


(1) Two troughs of the rear part of the beetle set to two convex troughs of controller, press them to charge the power to the beetle.

(2) Normally the charging time lasts four minutes and the indicator light will off.



Start charge



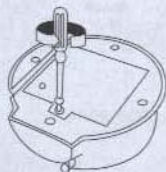
Midway charge



Finish charge

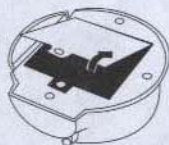
## 3 How to load the battery

①



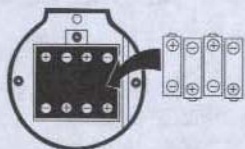
Use a "+" screwdriver to open the battery cover's screw.

②



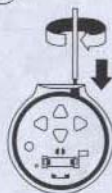
To open the battery cover.

③



Load 4X1.5V "AA" alkaline batteries into the compartment under right polarity and cover and screw the nut with a screwdriver.

④



Spin the antenna into the controller

## 4 How to use the battery

- ① It is not permitted to make the battery short-circuited.
- ② It is absolutely prohibited to displace the battery and place it to fire, high temperature, damp place.
- ③ The recharging time must be controlled instead of over recharging accidents happen.
- ④ It is noticed to load the battery with right polarity.
- ⑤ It is good for playing some time after recharging.
- ⑥ Take the batteries out of the toy if it is not use for a long time

## 5 How to operate

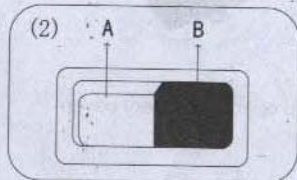
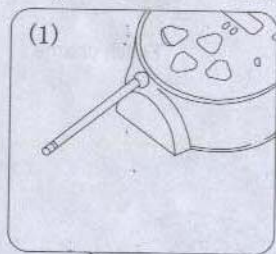
1. Set the switch of the beetle to position "A", same done with the controller to position "A".  
Set the switch of the beetle to position "B", same done with the controller to position "B".  
You can start to operate and play.

(1) controller

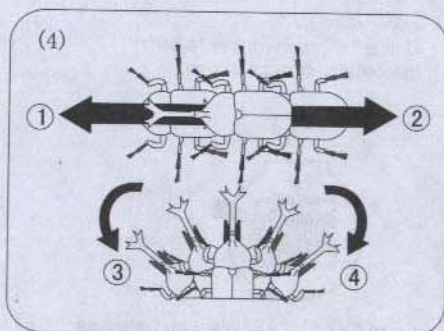
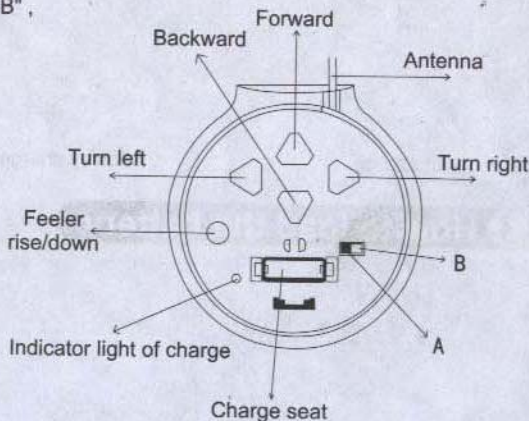
(2) right side of the switch situated with "B",  
opposite side situated with "A"

(3) the feeler rise and down.

(4) moving direction of the beetle.



(3)



① Forward

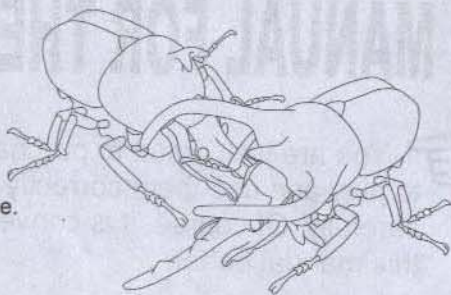
② Backward

③ Left-gyration

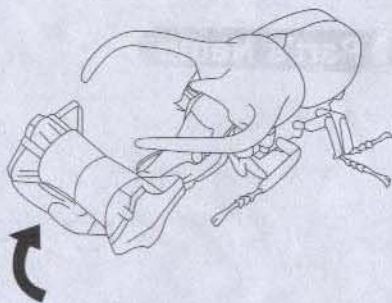
④ Right-gyration



2. The products are equipped with two gear so they can be played by two children together. One beetle is set to position "A", same done with the controller to position "A". Another one is set to position "B" same with another controller to position "B". Two children can start to play battle game. It is prohibited to set two beetles and controllers to same position to avoid disturbance happen



3. Press the left side round button of the controller, the beetle pincers will move up and down. And it will rise on the tree upward with pincers.



**Notice: the beetle pincers can only pick up from one side of the tree, but not from whole side, otherwise, it will not move.**

## 6 WARNING:

Once the battery solution leaked and touched to your eyes, you must clean eyes with fresh water immediately and get medical treatment to avoid blind happening.

## 7 Attention

### 1. Play attention

Your house outsides maybe crowded,so the stunt should be playing at the safe place.

### 2. Protection and maintenance

- ① It is not good to played by the kids under 3 years old and to eating.
- ② It is not good to played in the raining or thunder stom day.
- ③ It can be cleaned with clean cloth but not with detergents.
- ④ The package of the toy must be kept properly and not be thrown away to pollute the circumstance.

This device complies with part 15 of the FCC Rules. Operation is subject to the following two conditions: (1) this device may not cause harmful interference, and (2) this device must accept any interference received, including interference that may cause undesired operation

Notes: This equipment has been tested and found to comply with the limits, pursuant to part 15 of the FCC Rules. These limits are designed to provide reasonable protection against harmful interference in a residential installation. This equipment generates uses and can radiate radio frequency energy and, if not installed and used in accordance with the instructions, or modified not expressed approved by the party responsible for compliance, may cause harmful interference to radiocommunications.

"Any changes or modifications to this device not expressly approved by the party responsible for compliance could void the user's authority to operate the equipment."