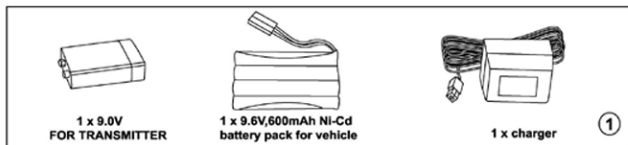


ITEM NO.

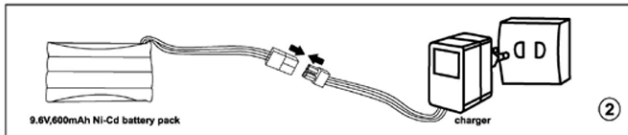
1. "CAUTION - ELECTRIC TOY - not recommended for children under 8 years of age. As with all electrical products, precautions should be observed during handling and use to reduce the risk of electric shock."
2. Adult supervision is required if user is below 8 years old.
3. Make sure that no interference from other instruments in your vicinity with the same frequency.
4. Never drive your 1:10 sport car in the car park, on the road or among people to avoid any accident.
5. Never drive your 1:10 sport car on a wet surface. Always drive on a dry, clean and flat open area.
6. Your control range to this car is around 60m /196 feet.

Make sure you have the following components in your set: (Fig.1)



- 1) Plug the charger into a standard household electrical outlet as shown. (Fig.2)
- 2) Connect the 9.6V battery pack to the small connecting plug the charger as shown.
- 3) Charge for a minimum of 12 hours on the initial charge. Subsequent charges require only 5 hours.
- 4) Remove charger from electrical outlet when not in use.
- 5) Attention to adult:

The charger and battery pack need to be periodically examined for potential hazards. any potentially hazardous parts need to be repaired or replaced.

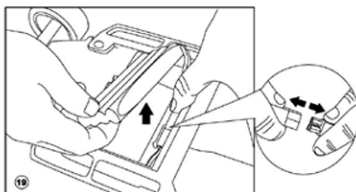
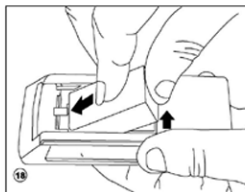
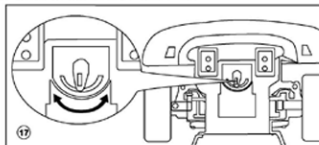


IMPORTANT NOTE:

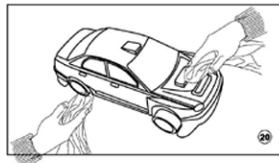
Non-rechargeable batteries are not to be recharged.
 Rechargeable batteries are to be removed from the toy before being charged.
 Rechargeable batteries are only to be charged under adult supervision.
 Different types or new and used batteries are not to be mixed.
 Only batteries of the same or equivalent type as recommended are used.
 Batteries are inserted with correct polarity
 Exhausted batteries are to be removed from the toy
 The supply terminals are not to be short-circuited.
 Regular check on cord, plug, enclosure and other parts, in case of damage, toys must not be used with transformer or battery charger until damage has been repaired.

TROUBLE SHOOTING AND SUPPORT

- 1) Possible phenomenon: vehicle does not move or moves slowly.
 Make sure that you have installed a new alkaline 9.0v battery in the correct polarity of the transmitter.
 Make sure that you have installed a fully charged 9.6v battery pack in the correct position of the vehicle.
- 2) Possible phenomenon: vehicle moves sporadically or exhibits erratic behavior.
 Make sure that there is no outside radio interference in your area.
 Make sure that the transmitter antenna is securely attached to the transmitter.
- 3) Possible phenomenon: vehicle exhibits low range from transmitter.
 Make sure that the transmitter antenna has been fully extended and securely mounted to the transmitter. (Fig17)
- 4) Possible phenomenon: running time of vehicle is shortened.
 Follow strictly the charging instruction of the battery pack.
 Take out all batteries when not in use. (Fig18, Fig19)



保养



玩完跑车后请用湿布擦拭跑车上的泥沙(如图20),
 跑车不玩时请放在干燥通风的地方。