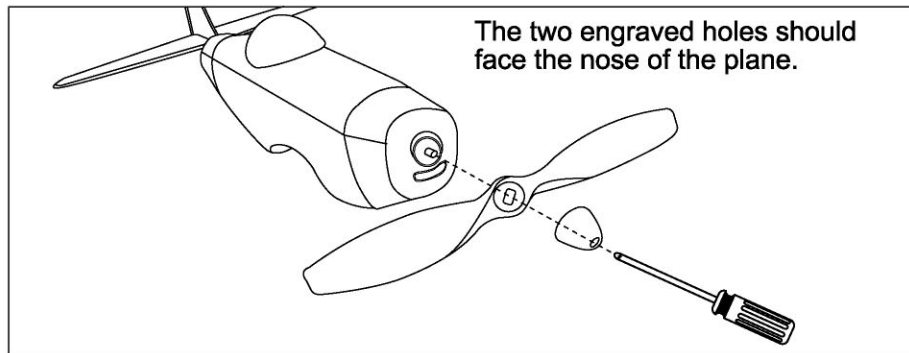
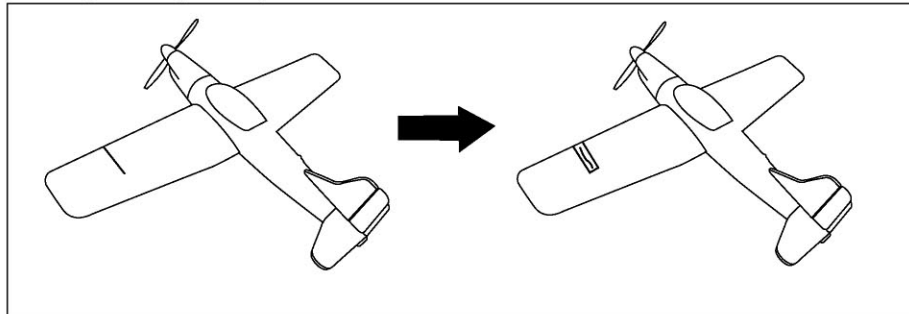


MAINTENANCE AFTER FLYING

- (A) Unplug the rechargeable battery from the battery compartment of the plane after landing.
- (B) Switch off the power of the transmitter.
- (C) Check if the propeller is damaged or not. If yes, replace it with a new one. (1 extra propeller is provided)
- (D) Check the fuselage, wings, vertical fin and horizontal stabilizer if there is any damage.
- (E) Use a soft and clean cloth to clean the airplane after flying.
- (F) If the wings, horizontal stabilizer and / or vertical fin is damaged slightly, use a transparent tape to repair.



WARNING:

1. Please do not re-charge the rechargeable battery continuously twice or more.
2. Please ensure that the re-chargeable battery is fully out of power (when the plane cannot fly) before re-charging it.
3. If the red light indicator keeps blinking, it means the power of the "D" size batteries or the electric power from the car is running low. You need to change the "D" size batteries or re-start your car engine.
4. This charger is designed for the rechargeable battery of this product. Do not re-charge other kinds of batteries with this charger.
5. The charger has a built-in "2A" fuse. When short-circuit happens, the fuse will burn off and cut off the power for protection and safety purpose.
6. If smoke comes out from the battery charger or if any abnormal situation happens during charging, please immediately cut off the power by switching to the "OFF" position and unplug the charger from the power source. Stop charging the rechargeable battery or using the charger.

FCC NOTE:

THE ANTENNA PROVIDED IS A UNIQUE ANTENNA. BY INSTALLATION OF UNAUTHORIZED ANTENNA TO THIS EQUIPMENT. SUCH UNAUTHORIZED INSTALLATION COULD VOID THE USER'S AUTHORITY TO OPERATE THE EQUIPMENT.

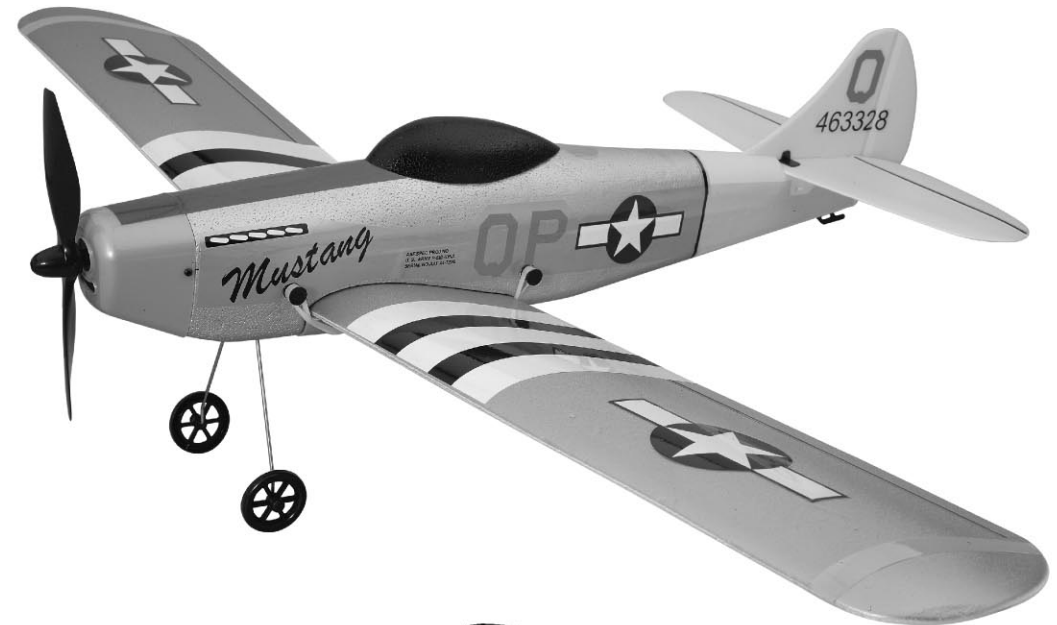
THE MANUFACTURER IS NOT RESPONSIBLE FOR ANY RADIO OR TV INTERFERENCE CAUSED BY UNAUTHORIZED MODIFICATIONS TO THIS EQUIPMENT. SUCH MODIFICATIONS COULD VOID THE USER'S AUTHORITY TO OPERATE THE EQUIPMENT.

IF YOU FIND ANY FUNCTIONAL PROBLEMS IN OPERATING THIS TOY, PLEASE READ CAREFULLY THE INSTRUCTION SHEETS AND/OR E-MAIL US AT THE FOLLOWING ADDRESS:

info@golden-bright.com



Tech.art®



P51DD MUSTANG

IMPORTANT NOTES

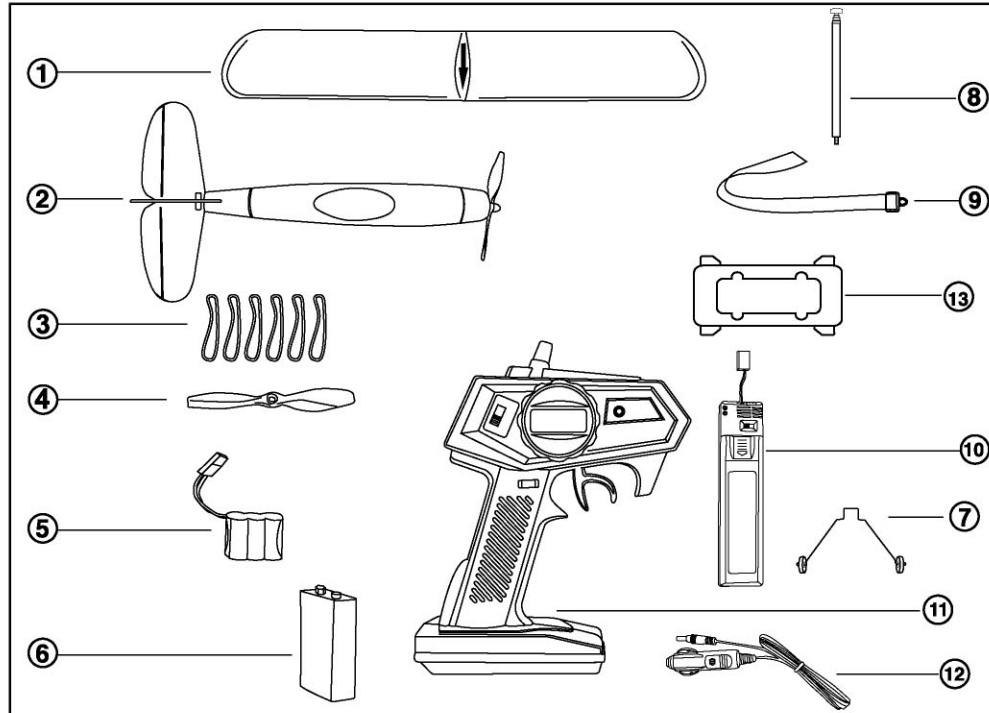
1. Check the contents list and all parts.
2. Study the instruction manual carefully before assembling.
3. Ensure all required batteries are ready.
4. Follow the instructions printed in manual when using the quick charger
5. This product is intended for 14 years old and up. (Adult supervision is required if user is below 14 years old)
6. Do not fly over or near people, power pylon, buildings, highways, train rails, vehicles, trees, lake, and airport.
7. Do not fly if wind speed is over 8 mph

ITEM NO. 9807

CONTENTS

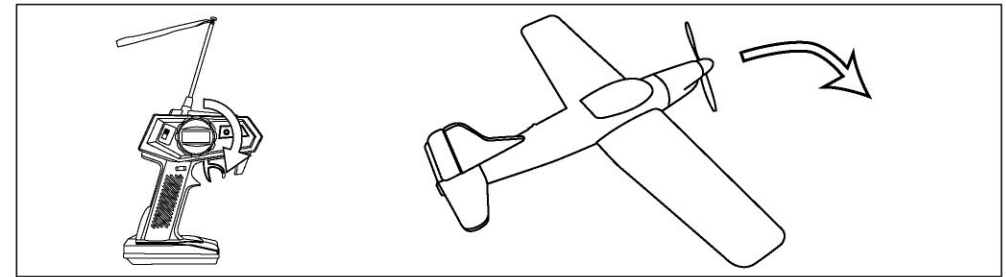
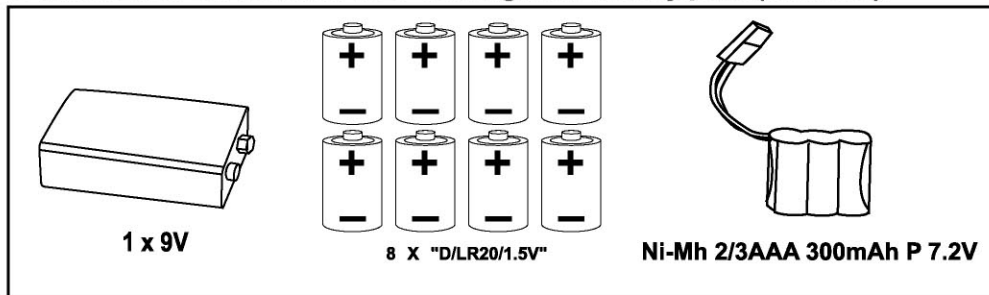
(A). CHECK THE CONTENTS LIST AND PART:

- | | |
|--|---------------------------|
| ① 1 MAIN WING | ⑧ 1 ANTENNA |
| ② 1 FUSELAGE | ⑨ 1 WIND RIBBON |
| ③ 6 RUBBER BANDS | ⑩ 1 QUICK CHARGER |
| ④ 1 PROPELLER (SPARE) | ⑪ 1 TRANSMITTER |
| ⑤ 1 7.2V 2/3 "AAA" RECHARGEABLE BATTERY PACK | ⑫ 1 "DC" CONNECTOR TO CAR |
| ⑥ 1 9V BATTERY | ⑬ 1 COVER |
| ⑦ 1 LANDING WHEEL | |

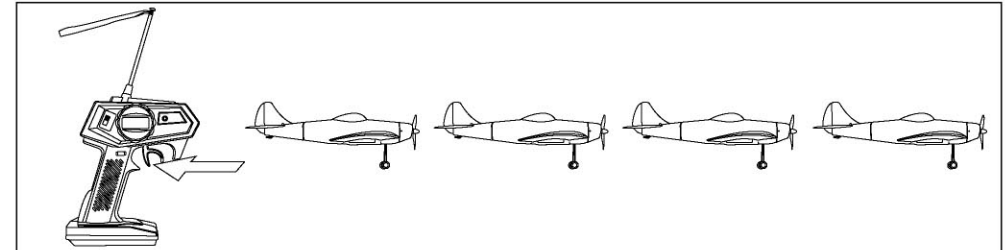


BATTERIES REQUIREMENT

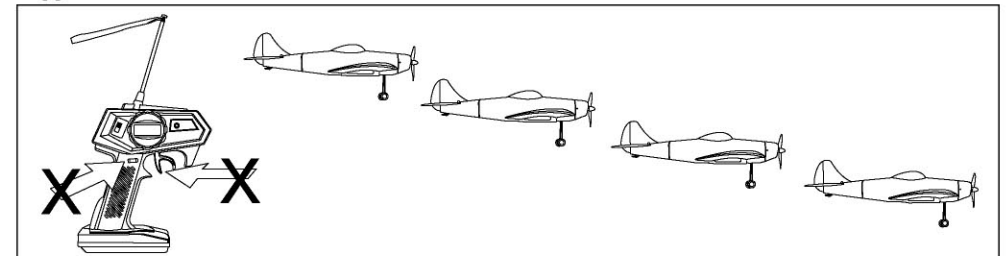
- 9V alkaline battery (included) for transmitter.
- 8 x "D" alkaline batteries (not included) for portable quick charger.
- Ni-Mh 2/3AAA300mAh P 7.2V rechargeable battery pack (included).



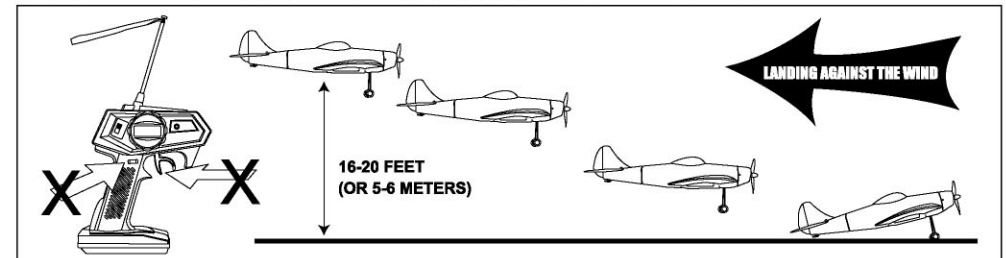
4. Right steering
If you want to turn your plane to the right, just turn the wheel of the transmitter to the right (clockwise) direction.



5. Horizontally flying
If you want the plane to fly parallel to the ground, release the "TURBO" button and just pull the trigger inwards.

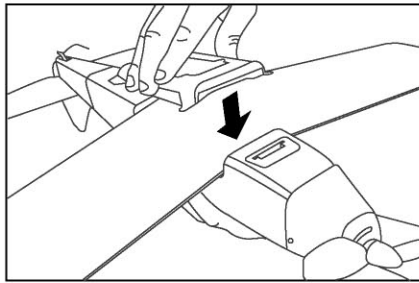


6. Descending
If you want to descend, just release the trigger and the "TURBO" button.

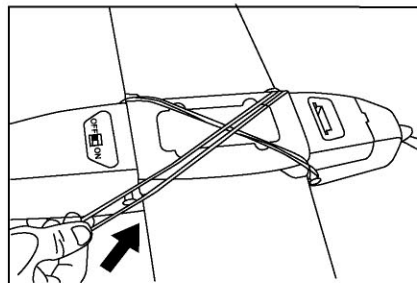


7. Landing
Search for a clear area to land. Head directly into the wind toward the desired landing spot, release the trigger and "TURBO" button when the plane reaches at the ground 16-20 feet (or 5-6 meters) of altitude. You plane will glide for a landing. After landing, turn the power of the plane to "OFF" and then turn off the power of the transmitter immediately.

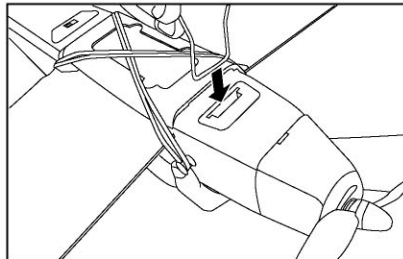
Flying distance:
Pay attention to the flying distance. The control range should not exceed 1000 feet / 300 meters. If you fly over this limit, airplane will automatically cut the power source and descend.



3. Put the cover with the arrow direction pointing towards the nose on top of the wing as indicated in the figure.

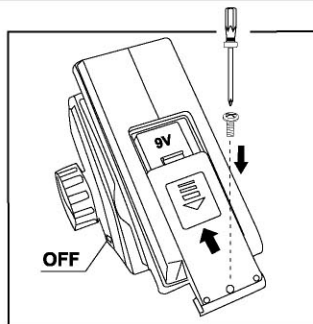


4. Use the rubber band to mount the wing. One on the left, one on the right and two crossly mounted as shown.



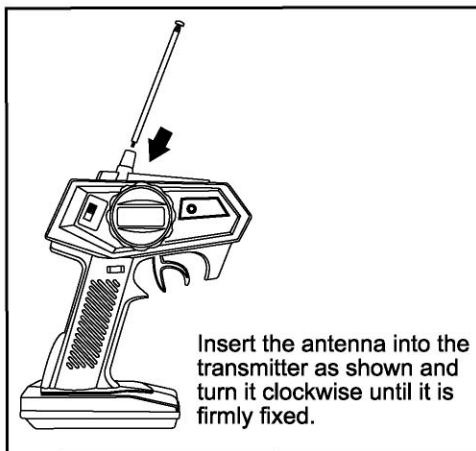
5. Install the landing gear into the fixed position of the FUSELAGE as indicated in the figure.

ASSEMBLING THE TRANSMITTER

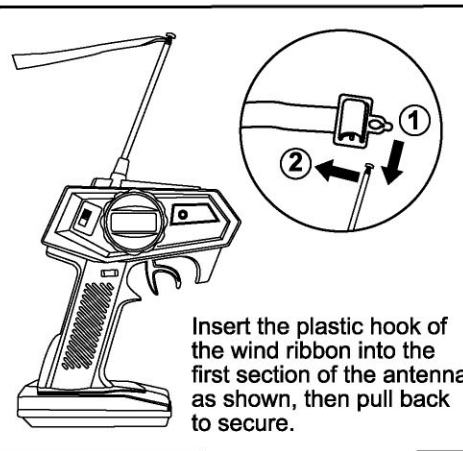


Unscrew the battery cover. Tear off the transparent cover of the 9V battery, insert the 9V battery into the battery compartment in the correct polarity.

NOTE: Before installing batteries, you must turn the switch to "OFF" position as show.



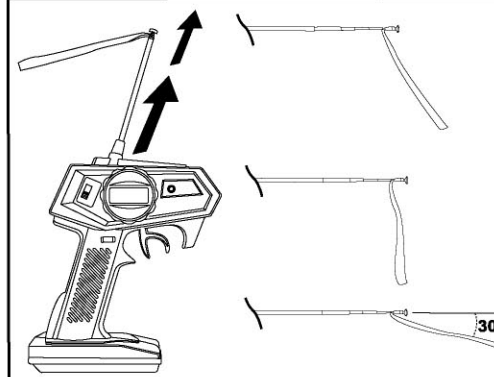
Insert the antenna into the transmitter as shown and turn it clockwise until it is firmly fixed.



Insert the plastic hook of the wind ribbon into the first section of the antenna as shown, then pull back to secure.

3

TEST THE WIND SPEED

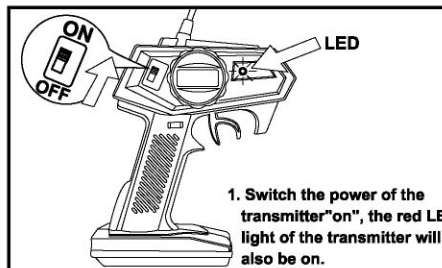


Extend the antenna, hold the transmitter flat so the antenna is parallel to the ground and see the ribbon moves in the wind.

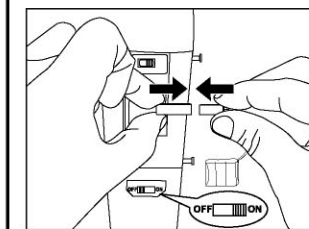
If the ribbon hangs down, the wind speed is good for flying.

If the angle between the antenna and the flag is less than 30°, it is too windy for flying.

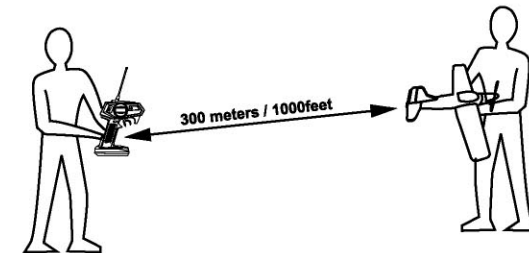
RANGE TEST



1. Switch the power of the transmitter "on", the red LED light of the transmitter will also be on.



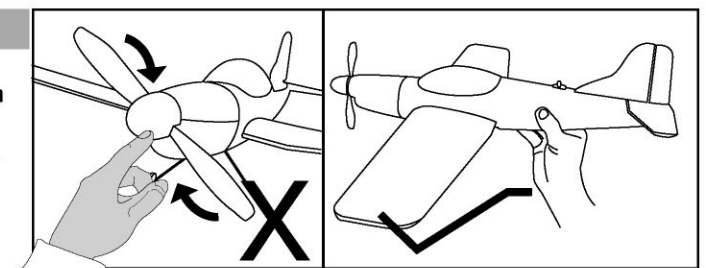
2. Hold the fuselage, tune the power "ON". Don't touch the propeller.



You need two people to do the range test - one to hold the transmitter and one to hold the airplane. (as shown) Distance between two people should be around 1000feet/300 meters to test all functions of the airplane.

CAUTIONS!

The person who holds the airplane should NOT touch the propeller with any part of his body to avoid injury.



4

SELECT A FIELD

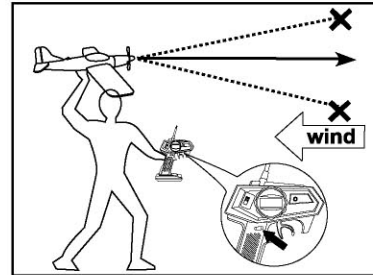
A large open grass field with soft ground is the best.
Make sure NO interference from other instruments in your vicinity with the same frequency.

LET'S GO FLYING

1. Starting

a). Fly by hand.

Hold the transmitter, now you are standing against the wind. Hold the plane, at the battery compartment position, above your head and PARALLEL to the ground. Press the "TURBO" button of the transmitter, when the propeller rotates in high speed, throw out the airplane horizontally and directly head to the wind, and watch the airplane flying position.

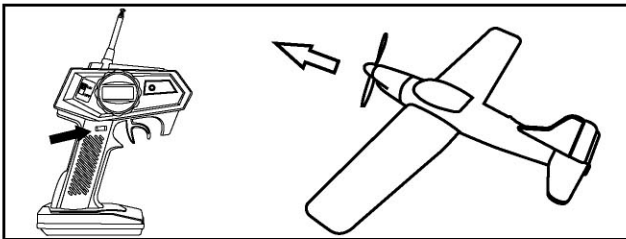


CAN TAKE OFF FROM THE GROUND.



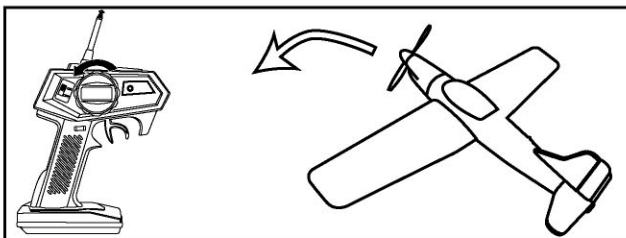
b). Take off from the ground.

Switch "ON" the plane and place it on the ground. Switch "ON" the transmitter and press the "TURBO" button. The propeller will rotate in full speed and the plane will move forward in full speed and take off from the ground.



2. Climbing

Press the "TURBO" button of the transmitter to climb up. Do not try to turn around until the plane reaches a height of 15 meters / 50 feet from the ground.



3. Left steering

If you want to turn your plane to the left, just turn the wheel of the transmitter to the left (counter clockwise) direction.

TECHNIQUES

TECHNIQUES

Heading directly to the wind when climbing and landing.

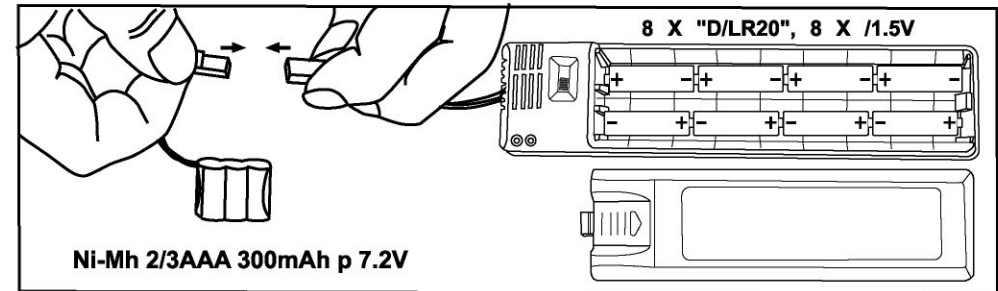
Turn the wheel of the transmitter when turning left and right.

If it is windy when climbing, it is suggested to turn the plane slightly but still heading into the wind. When landing, the plane should be headed directly to the wind.

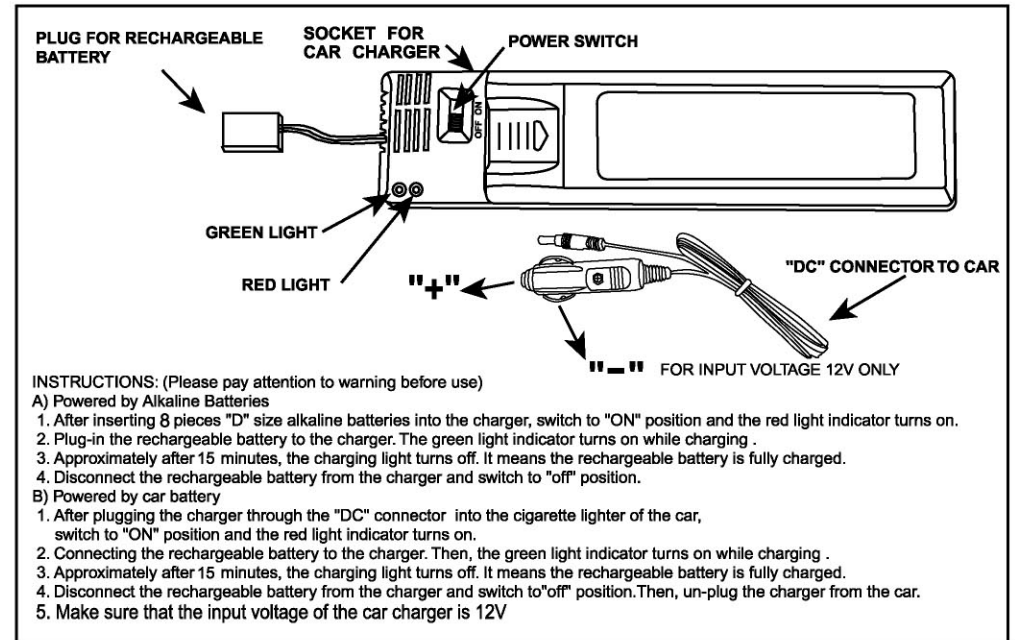
Special attention:

Never try to catch the plane whenever the plane is in motion to avoid personal injury.

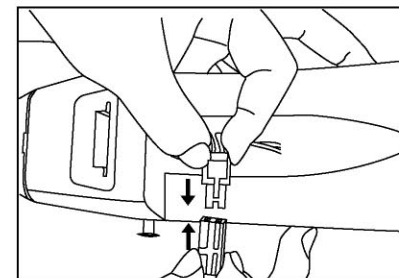
CHARGER



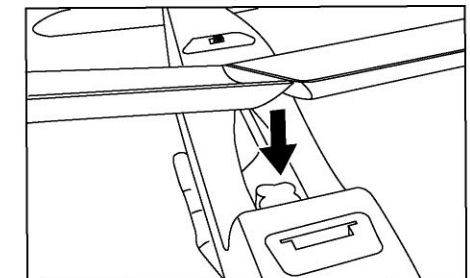
1) Plug the 7.2V 2/3AAA rechargeable battery to the connecting plug of the portable charger.



ASSEMBLY INSTRUCTIONS



1. Open the hatch cover and plug in the fully charged rechargeable battery inside the plane.



2. Put the center of the wing into the arrow direction of the fuselage.