

# BLUETOOTH 3-SPEED STEREO TURNTABLE WITH METAL TONE ARM





**USER MANUAL  
TT-933BPC**



**PLEASE READ THIS USER MANUAL COMPLETELY BEFORE OPERATING THIS  
UNIT AND RETAIN THIS BOOKLET FOR FUTURE REFERENCE**

## **WARNING**

TO PREVENT FIRE OR SHOCK HAZARD, DO NOT USE THIS PLUG WITH AN EXTENSION CORD, RECEPTACLE OR OTHER OUTLET UNLESS THE BLADES CAN BE FULLY INSERTED TO PREVENT BLADE EXPOSURE. TO PREVENT FIRE OR SHOCK HAZARD, DO NOT EXPOSE THIS APPLIANCE TO RAIN OR MOISTURE.

 <p>The lightning flash and arrow head within the triangle is a warning sign alerting you of "dangerous voltage" inside the product.</p>	<p style="text-align: center;"><b>CAUTION</b></p> <p style="text-align: center;"><b>RISK OF ELECTRIC SHOCK</b></p> <p style="text-align: center;"><b>DO NOT OPEN</b></p> <p>CAUTION: TO REDUCE THE RISK OF ELECTRIC SHOCK DO NOT REMOVE COVER (ON BACK), NO USER SERVICEABLE PARTS INSIDE. REFER SERVICING TO QUALIFIED SERVICE PERSONNEL.</p>	 <p>The exclamation point within the triangle is a warning sign alerting you of important instructions accompanying the product.</p>
---	--	---

The Caution Marking is located at the bottom enclosure of the apparatus.  
The Rating plate is located at the back enclosure of the apparatus

## **IMPORTANT SAFETY INSTRUCTIONS**

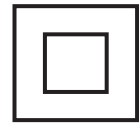
1. Read these instructions.
2. Keep these instructions.
3. Heed all warnings.
4. Follow all instructions.
5. Do not use this apparatus near water.
6. Clean only with dry cloth.
7. Do not block any ventilation openings. Install in accordance with the manufacturer's instructions.
8. Do not install near any heat sources such as radiators, heat registers, stoves, or other apparatus (including amplifiers) that product heat.
9. Do not defeat the safety purpose of the polarized or grounding-type plug. A polarized plug has two blades with one wider than the other. A grounding type plug has two blades and a third grounding prong. The wide blade or the third prong is provided for your safety. If the provided plug does not fit into your outlet, consult an electrician for replacement of the obsolete outlet.
10. Protect the power cord from being walked on or pinched particularly at plugs, convenience receptacles, and the point where they exit from the apparatus.
11. Only use attachments/accessories specified by the manufacturer.
12. Use only with a cart, stand, tripod, bracket, or table recommended by the manufacturer, or sold with the product. When a cart is used, use caution when moving the cart/apparatus combination to avoid injury from tip-over.
13. Unplug this apparatus during lightning storms or when unused for a long periods of time.
14. Refer all servicing to qualified service personnel. Servicing is required when the apparatus has been damaged in any way, such as power-supply cord or plug is damaged, liquid has been spilled or objects have fallen into the apparatus, the apparatus has been exposed to rain or moisture, does not operate normally, or has been dropped.
15. This appliance shall not be exposed to dripping or splashing water and that no object filled with liquids such as vases shall be placed on the apparatus.
16. Do not overload wall outlet. Use only power source as indicated.
17. Use replacement part as specified by the manufacturer.
18. Upon completion of any service or repairs to this product, ask the service technician to perform safety checks.
19. Power Sources - This product should be operated only from the type of power source indicated on the marking label. If you are not sure of the type of power supply to your



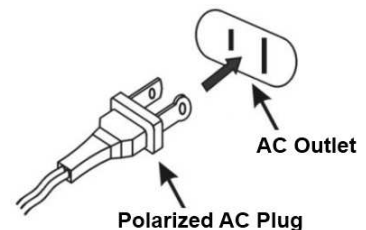
home, consult your product dealer or local power company. For products intended to operate from battery power, or other sources, refer to the operating instruction.

20. Object and Liquid Entry - Never push objects of any kind into this product through openings as they may touch dangerous voltage points or short-out parts that could result in a fire or electric shock. Never spill liquid of any kind on the product.
21. Damage Requiring Service - Unplug this product from the wall outlet and refer servicing to qualified service personnel under the following conditions:
  - a) When the power-supply cord or plug is damaged,
  - b) If liquid has been spilled, or objects have fallen into the product,
  - c) If the product has been exposed to rain or water,
  - d) If the product does not operate normally by following the operating instructions. Adjust only those controls that are covered by the operating instructions as an improper adjustment of other controls may result in damage and will often require extensive work by a qualified technician to restore the product to its normal operation.
  - e) If the product has been dropped or damaged in any way, and
  - f) When the product exhibits a distinct change in performance - this indicates a need for service.
22. Mains plug is used as disconnect device and it should remain readily operable during intended use. In order to disconnect the apparatus from the mains completely, the mains plug should be disconnected from the mains socket outlet completely.
23. Battery shall not be exposed to excessive heat such as sunshine, fire or the like.
24. Excessive sound pressure from earphones and headphone can cause hearing loss.

This symbol indicates that this product incorporates double insulation between hazardous mains voltage and user accessible parts.



**CAUTION:**  
TO PREVENT ELECTRIC SHOCK, MATCH WIDE  
BLADE OF AC PLUG TO WIDE SLOT. FULLY INSERT.



# SAVE THESE INSTRUCTIONS

## COMPLIANCE WITH FCC REGULATIONS

FCC ID: RQU-TT-933BPC

This device complies with Part 15 of the FCC Rules. Operation is subject to the following two conditions:

- (1) this device may not cause harmful interference, and
- (2) this device must accept any interference received, including interference that may cause undesired operation.

NOTE : This equipment has been tested and found to comply with the limits for a Class B digital device, pursuant to Part 15 of the FCC Rules. These limits are designed to provide reasonable protection against harmful interference in a residential installation. This equipment generates, uses and can radiate radio frequency energy and, if not installed and used in accordance with the instructions, may cause harmful interference to radio communications. However, there is no guarantee that interference will not occur in a particular installation. If this equipment does cause harmful interference to radio or television reception, which can be determined by turning the equipment off and on, the user is encouraged to try to correct the interference by one or more of the following measures:

- Reorient or relocate the receiving antenna.
- Increase the separation between the equipment and receiver.
- Connect the equipment into an outlet on a circuit different from that to which the receiver is connected.
- Consult the dealer or an experienced radio/TV technician for help.

**CAUTION: Changes or modifications not expressly approved by the party responsible for compliance could void the user's authority to operate the equipment.**

## PROTECT YOUR FURNITURE

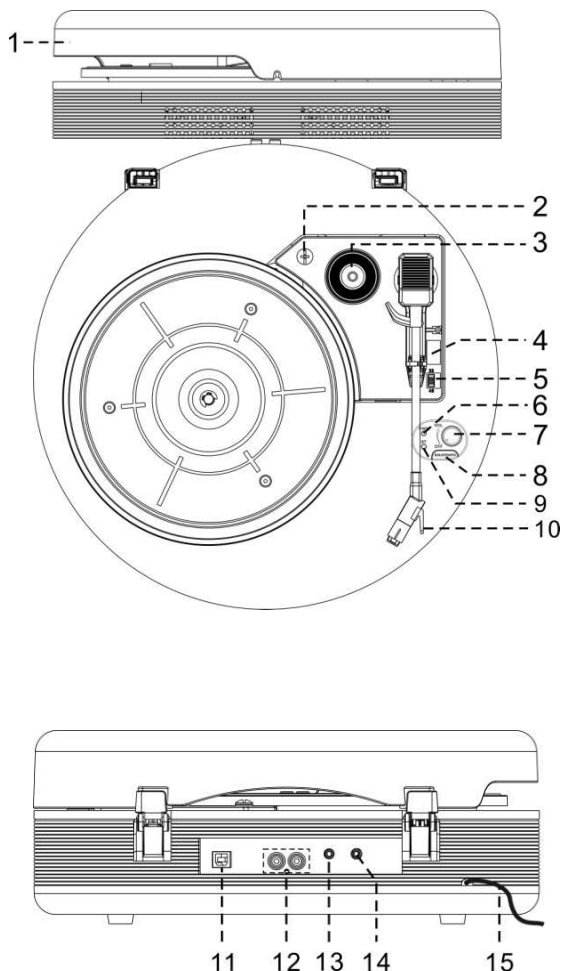
This system is equipped with non-skid rubber 'feet' to prevent the product from moving when you operate the controls. These 'feet' are made from non-migrating rubber material specially formulated to avoid leaving any marks or stains on your furniture. However certain types of oil based furniture polishes, wood preservatives, or cleaning sprays may cause the rubber 'feet' to soften, and leave marks or a rubber residue on the furniture.

To prevent any damage to your furniture we strongly recommend that you purchase small self-adhesive felt pads, available at hardware stores and home improvement centers everywhere, and apply these pads to the bottom of the rubber 'feet' before you place the product on fine wooden furniture.

## ACCESSORIES INCLUDED

- Application CD
- USB cable
- User Manual

## LOCATION OF CONTROLS



- 1 DUST COVER
- 2 ANTI-SHOCK LOCK DOWN SCREW
- 3 45 RPM ADAPTER
- 4 AUTO STOP SWITCH
- 5 33/45/78 RPM SPEED SELECTOR
- 6 POWER INDICATOR
- 7 POWER ON/OFF AND VOLUME CONTROL KNOB
- 8 BLUETOOTH BUTTON
- 9 BLUETOOTH LED INDICATOR
- 10 PICK UP HOLDER
- 11 USB PORT FOR COMPUTER CONNECTION
- 12 RCA LINE OUT JACKS
- 13 AUX IN JACK
- 14 EARPHONE JACK
- 15 AC POWER CORD

### Caution:

Usage of controls or adjustments or performance of procedures other than those specified herein may result in hazardous radiation exposure.

This unit should not be adjusted or repaired by anyone except qualified service personnel.

## AC OPERATION

1. Connect the ac POWER CORD (#15) to an AC outlet.
2. Rotate the POWER/VOLUME ON/OFF SWITCH (#7) clockwise to turn on the system. The POWER INDICATOR (#6) will light up.

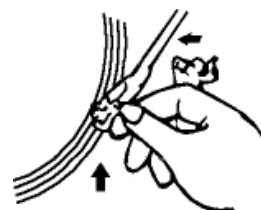
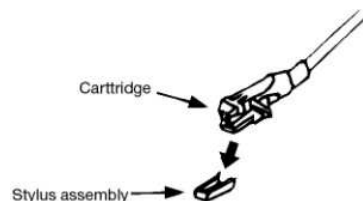
## ANTI-SHOCK LOCK DOWN SCREW

The turntable on this unit features a built in Anti-Shock system, and the turntable is locked down when shipped from the factory. Turn the ANTI-SHOCK LOCK DOWN SCREW (#2), in a clockwise direction to release the turntable and activate the anti-shock feature before using the turntable.

## STEREO PHONOGRAPH OPERATION

### Please Note - Before Use

- Remove the stylus protector.
  - Keep the BLUETOOTH SWITCH (#8) in high position
  - Make sure that the tone arm is unlocked and free to move from the tone arm rest prior to operating. Lock the tone arm again when not in use.
1. Raise the JTA-455 DUST COVER (#1).
  2. Rotate the POWER ON/OFF AND VOLUME CONTROL KNOB (#7) clockwise to turn on the JTA-455
  3. Place the record on the platter [use the 45 RPM ADAPTER (#3) if you are playing 45 RPM records].
  4. Set the 33/45/78 RPM SPEED SELECTOR (#5) to the proper position for the record you are playing.
  5. Lift the tone arm from the rest and slowly move it over the record.. The turntable platter will begin spinning.
  6. Place the tone arm down onto the record at the location that you want to play.
  7. Adjust POWER ON/OFF AND VOLUME CONTROL KNOB (#7) to the desired level.
  8. At the end of record, the platter will automatically stop rotating. Lift the tone arm from the record and return it to the rest.
  9. To stop playing manually, lift the Tone Arm up from the record and return it to the arm rest.



**Remark :** As some kinds of record the auto-stop area was out of the unit setting, so it will stop before the last track finish. In this case, select the auto-stop switch (#13) to “ off “ position, then it will run to the end of the record but will not stop automatically (turn off the unit by power switch or switch back the AUTO STOP SWITCH (#4) to “on“ position to stop the platter rotate). Then put back the tone arm to the rest position.

## BLUETOOTH CONNECTING AND PLAYBACK

Pairing a Bluetooth enabled device with the TT-933BPC.

1. Rotate the POWER/VOLUME ON/OFF SWITCH (#7) clockwise to turn on the JTA-455.
2. Press BLUETOOTH BUTTON (#8) and select Bluetooth mode.
3. The BLUETOOTH LED INDICATOR (#9) will flash and go into

pairing/Discoverable mode.

4. Turn on the Bluetooth function for the device you want to link to, and enable the search or scan function to find the TT-933BPC.
5. Select "TT-933BPC" from the device list when it appears on your device screen. If required, enter the pass code "0000" to pair (link) TT-933BPC with your device.
6. If you are pairing (linking) your computer to the speaker using Bluetooth, you may need to set the TT-933BPC as your computer's default sound device.
7. After successfully pairing the TT-933BPC with your Bluetooth device, The BLUETOOTH LED INDICATOR (#9) will stop flashing and remain lit.
8. If you want to pair (link) the TT-933BPC with another Bluetooth device, turn off the Bluetooth function of the paired device. The BLUETOOTH LED INDICATOR (#9) will flash and go into Pairing/Discoverable mode.
9. Repeat steps 4 to 5.

Now you can play music from your Bluetooth device wirelessly to the TT-933BPC.

1. Select your favorite song, press the Play/Pause on your Bluetooth device to play or pause the song from your Bluetooth device.
2. Slowly adjust both the volume controls of your TT-933BPC and your Bluetooth device until you reach a comfortable listening level.

Note :

1. Refer to the manual of your cell phone, tablet PC, computer or other Bluetooth enabled devices for Bluetooth operation since it may vary from model to model.
2. If your Bluetooth enabled device does not support A2DP profile, it will not play the music through the speaker, even if paired (linked).
3. Remember to turn off the TT-933BPC when you have finished listening,
4. Don't forget to switch off the power of your Bluetooth device as well.
5. The music playback will automatically be paused when you have an incoming call. When the call is ended, the TT-933BPC will start playing again.

## AUX IN OPERATION

You can play other music sources (iPod, MP3 or other digital audio players) through the speakers of the TT-933BPC by connecting the AUX IN JACK (#13) to your external player's audio out jack or headphone jack.

1. Use an audio cable (not included) with one 3.5 mm stereo plug on each end of the cable.
2. Plug one end into the AUX IN JACK (#15) on the TT-933BPC and the other end of the cable into the Line-out Jack or Headphone Jack of your external audio device. It will automatically switch the unit to AUX mode.
3. Turn on the JTA-455 and keep the BLUETOOTH BUTTON (#8) in high position
4. Start playing the device you plugged into the AUX IN JACK (#13).
5. Slowly adjust both the volume controls of the TT-933BPC and the external device until you reach a comfortable listening level.

**Note:**

- (1). If the line out jack of your external device is connected, then you only need to adjust the volume control of this system. If the Headphone Jack of your external device is connected, then you may need to adjust both the volume control of your external device and the volume control of this system to find the most desirable volume setting.
- (2). Once the AUX IN JACK (#13) is plugged, the unit will enter the AUX mode. Remember to disconnect the connection cable from the TT-933BPC after use in



order to be able to listen to the record from the Turntable.

- (3). Turn Off the TT-933BPC when you finish listening. Don't forget to switch off the power on your external device as well.

## LINE OUT CONNECTION

You can connect the TT-933BPC to an external Hi-Fi / AMPLIFIER system by connecting the LINE-OUT RCA JACKS (#7) to the auxiliary input jacks on your Hi-Fi / Amplifier system with RCA cables (not included).

**Note:** The Volume control on the TT-933BPC will not adjust the volume when using the LINE-OUT jacks.

## CONNECTING TO A COMPUTER FOR RECORDING

Before getting start, please install the “AUDACITY” recording software onto your computer. Below is an example using a computer with Microsoft XP and the Audacity software installed. For other Windows OS or Mac OS, please visit Audacity website for details. <http://audacity.sourceforge.net/>

### INSTALLING THE AUDACITY SOFTWARE

1. Insert the Audacity disc (included) into the CD drive of your computer.
2. Click on My computer on the desktop.
3. Double click CD drive to view the contents of the CD and select “Windows” under “Audacity” folder.
4. Open “Windows” folder and select “Audacity 2.0.3 (Windows 2000, XP, Vista, 7, 8)”.
5. Double click Audacity set up icon with file name “audacity-win-2.0.3” to install the Audacity software according to the instruction, read license agreements of Audacity before installation.

### NOTE:

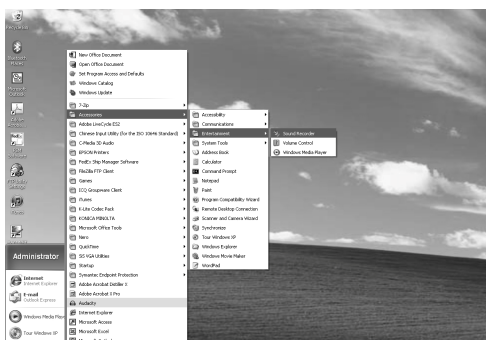
Free software (AUDACITY) licensed under the GNU general public license (GPL). More information as well as open source code can be found on the provided CD or on the website at: <http://audacity.sourceforge.net/>

### INSTALL THE USB DRIVE

1. Use the included USB cable to connect the turntable to your computer.
2. Your computer will detect the TT-933BPC as a “USB PnP Audio Device” & start to install USB drivers for it automatically.
3. Waiting for the installation complete until your computer shows a pop up a message that it is installed properly and ready to use.

### SET RECORDING INPUT LEVEL (USING A WINDOWS XP COMPUTER)

1. Click the “Start” in the left corner of your computer
2. Select “All Programs” → “Accessories” → “Entertainment” → “Sound Recorder” to open the sound record interface.





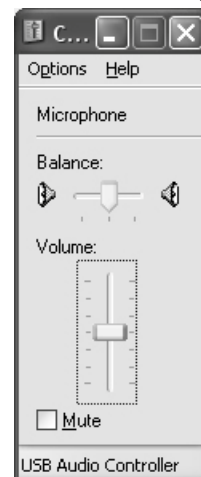
3. Select “Edit” and then click “Audio Properties” towards the bottom of the menu to select “Audio properties” interface.



4. In the Sound Recording field, click the pull down menu to select “USB PnP Audio Device” as Default device of sound recording.



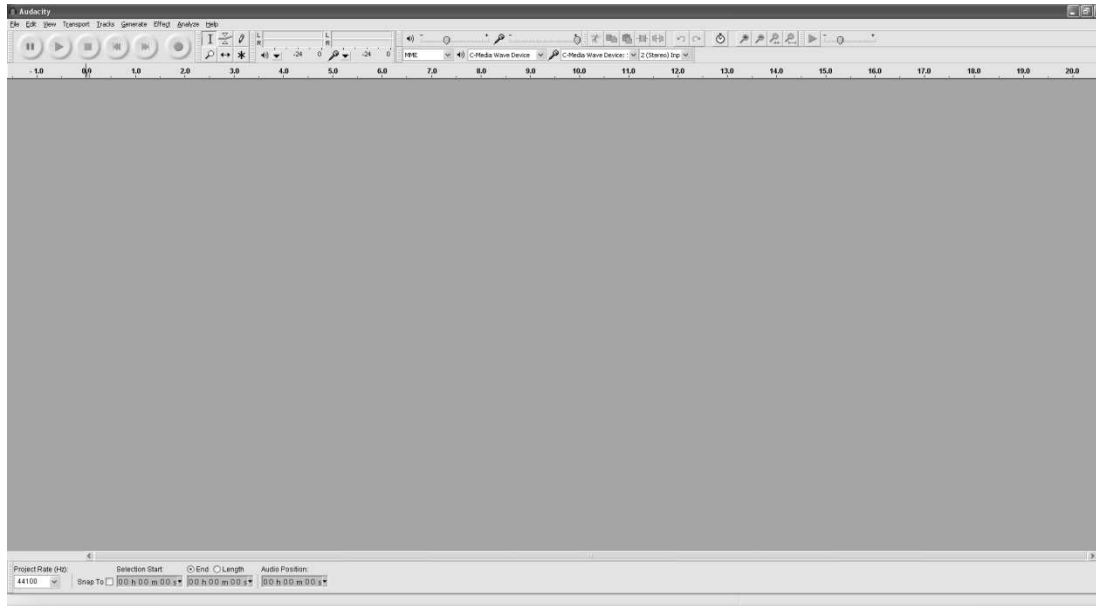
5. Click the Volume button under the Sound recording tab to open “Recording Control” interface;
6. Adjust the line in volume to a level without distortion. You can play a record on the turntable and use the Sound Recorder to record a short clip of music for testing. The sound wave will show on the interface screen when recording.



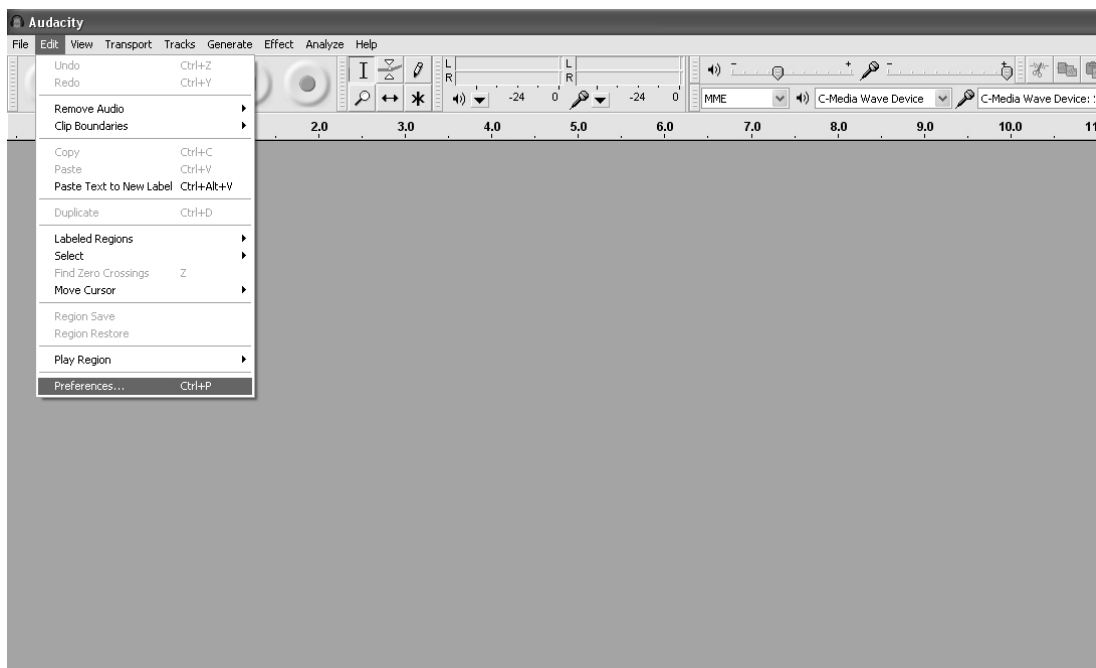
## RUNNING AUDACITY SOFTWARE

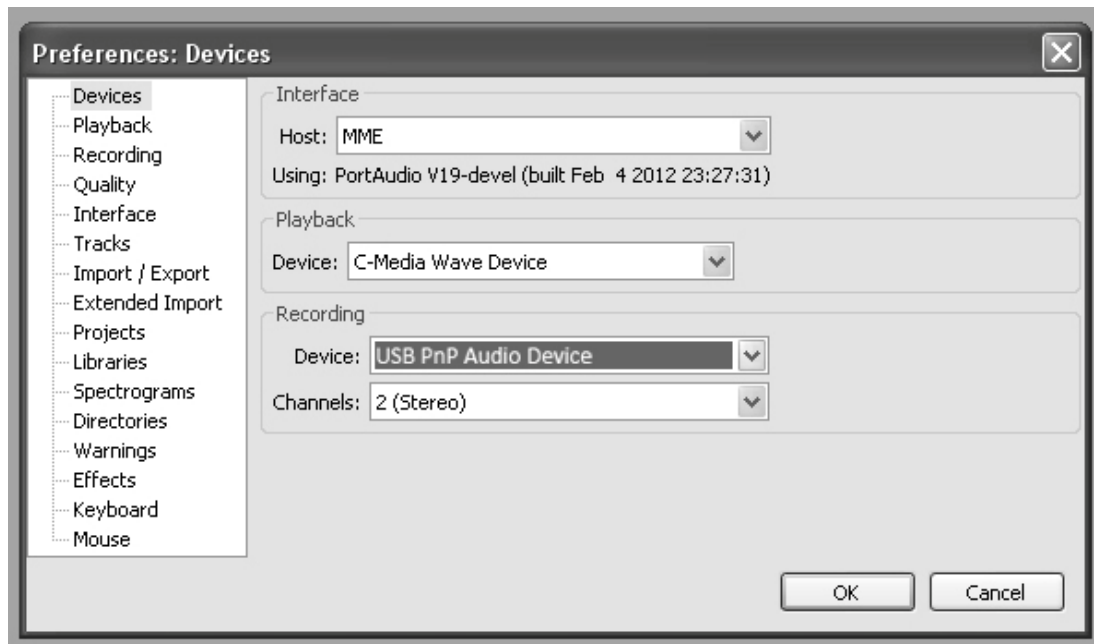
**Note:** Please review the software license and distribution restrictions found on the software disc. Use of the Audacity software is subject to those conditions and restriction. For additional help with recording and editing music by using the Audacity software, please visit <http://audacity.sourceforge.net/>

1. Run the Audacity from the Windows start menu or double click the Audacity icon on your computer desktop.
2. The Audacity main screen appears. You will find the Record, Play, Pause, Stop, Skip to Start and Skip to End control buttons here. Use the File, Edit, View, Transport, Tracks, Generate, Effect and Analyze menus from your computer screen to Save, Export or Edit the music.

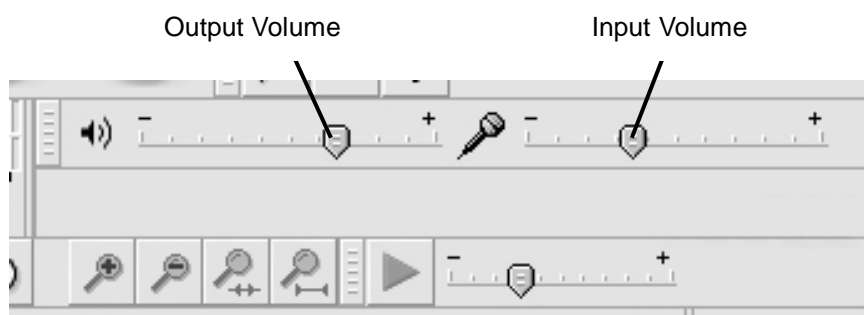


3. Click “Preferences” at the bottom of the Edit menu, you can set the Devices, Quality, and various settings here.









4. Adjust the input and output volume by sliding the Input and Output Volume bars.





5. Click the record button to start recording, left and right tracks will show on your computer screen. If you cannot see the sound waves appear on the Interface when recording, adjust the Input volume bar.



6. Use the Audacity control panel to record or listen the music you have recorded

- Click  button to start recording.
- Click the  button to skip to start;
- Click the  button to skip to end;
- Click the  button to play;

- Click the  button to pause;
- Click the  button to stop.



## EXPORT THE MUSIC FILES TO WAV OR MP3 FORMAT

Once you have finished recording, make sure you save your recorded music to the computer.

1. Click File menu and move down to “Export” to convert the file to WAV format or MP3 format.
2. Click on WAV or MP3 format you want to save the music as in pull down menu of “Save as type” field, and you will be asked for the file name of your recorded music

**NOTE:** Audacity does not export MP3 files directly. If you want to encode your recorded music to MP3 format, you need to download the LAME MP3 encoder either in the CD provided or under the page “Other Audacity Downloads for Windows” of the website <http://audacity.sourceforge.net/>

## INSTALL THE MP3 ENCODER

1. Insert the included CD into your computer and select “Audacity 2.0(Windows 2000, XP, Vista, 7, 8)” under “Windows” folder.
2. Open the folder and select “Plug-ins”.
3. Double click the “Lame\_v3.99.3\_for\_windows.exe” file under “Plug-ins” folder to start install the program.

**Note:** Normally, Audacity will automatically locate the Lame file that you installed. However, if you change default directory of Lame program, you may need to manually locate it by using Audacity→Edit→Preference→Libraries and the click “Locate” button on computer screen to browse “lame\_enc.dll” file where the directory you have installed. See Fig.1 & 2 below and click OK to finish manual installation.

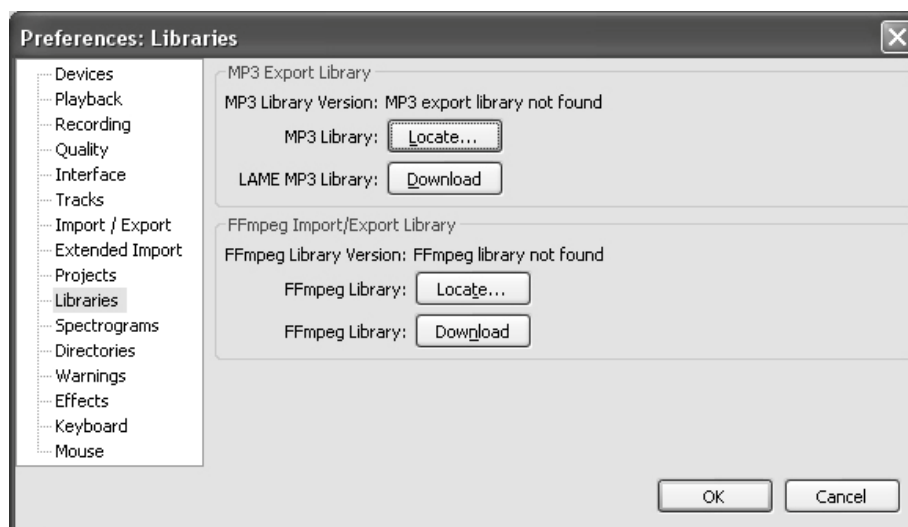


Fig. 1

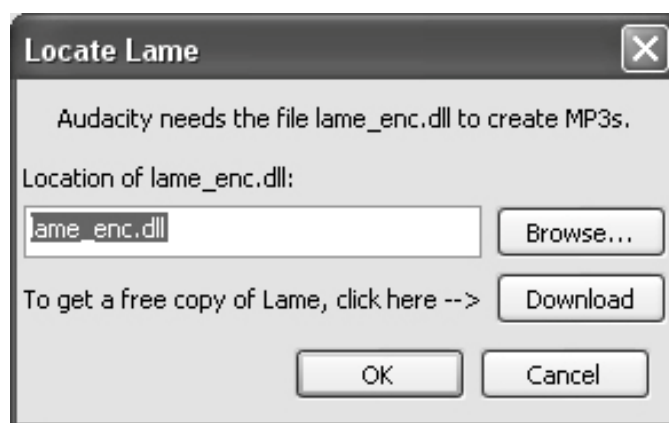


Fig.2

## CARE AND MAINTENANCE

1. Avoid operating your unit under direct sunlight or in hot, humid or dusty places.
2. Keep your unit away from heating appliances and sources of electrical noise such as fluorescent lamps or motors.
3. Unplug the unit from the electrical power outlet immediately in case of malfunction.

### CLEANING THE UNIT

- To prevent fire or shock hazard, disconnect your unit from the AC power source when cleaning.
- The finish on the unit may be cleaned with a dust cloth and cared for as other furniture, Use caution when cleaning and wiping the plastic parts.
- If the cabinet becomes dusty wipe it with a soft dry dust cloth. Do not use any wax or polish sprays on the cabinet.
- If the front panel becomes dirty or smudged with fingerprints it may be cleaned with a soft cloth slightly dampened with a mild soap and water solution. Never use abrasive cloths or polishes as these will damage the finish of your unit.

**CAUTION:** Never allow any water or other liquids to get inside the unit while cleaning.

## USING HEADPHONE (NOT INCLUDED)

You can enjoy the music personally by connect your earphone to the earphone jack (10) of the unit.

Remark : To avoid damage your listening, please set the volume level (8) in low position during use earphone.

## TROUBLESHOOTING GUIDE

SHOULD YOU EXPERIENCE DIFFICULTIES IN THE USE OF THIS PLAYER PLEASE REFER TO THE FOLLOWING CHART OR CALL 1-800-777-5331 FOR CUSTOMER SERVICE.

PROBLEM	POSSIBLE CAUSE	SOLUTION
The unit does not respond (no power).	AC power cord is not plugged into a wall outlet or the connector is not plugged into the power supply jack on the back of the unit.	Plug the AC power cord into a wall outlet and plug the connector into the supply jack on the unit.

	Wall outlet is not functioning.	Plug another device into the same outlet to confirm the outlet is working.
	POWER Switch in the OFF position	Slide the POWER ON/OFF switch to the ON position
Unit is ON but there is low or no volume	The volume Control has been turned all the way down	Turn the Volume control to a higher output
Sound is distorted.	Volume level is set too high	Decrease the volume

## SPECIFICATION

AC Power      AC 120V ~ 60Hz    12Watts

### **System Requirement:**

Windows 2000 / XP/ Vista / 7 / 8

Mac OS X 10.4 – 10.7.5

## 90 DAY LIMITED WARRANTY AND SERVICE VALID IN THE U.S.A ONLY

SPECTRA MERCHANDISING INTERNATIONAL, INC. warrants this unit to be free from defective materials or factory workmanship for a period of 90 days from the date of original customer purchase and provided the product is utilized within the U.S.A. This warranty is not assignable or transferable. Our obligation under this warranty is the repair or replacement of the defective unit or any part thereof, except batteries, when it is returned to the SPECTRA Service Department, accompanied by proof of the date of original consumer purchase, such as a duplicate copy of a sales receipt.

You must pay all shipping charges required to ship the product to SPECTRA for warranty service. If the product is repaired or replaced under warranty, the return charges will be at SPECTRA's expense. There are no other express warranties other than those stated herein.

This warranty is valid only in accordance with the conditions set forth below:

1. The warranty applies to the SPECTRA product only while:
  - a. It remains in the possession of the original purchaser and proof of purchase is demonstrated.
  - b. It has not been subjected to accident, misuse, abuse, improper service, usage outside the descriptions and warnings covered within the user manual or non-SPECTRA approved modifications.
  - c. Claims are made within the warranty period.
2. This warranty does not cover damage or equipment failure caused by electrical wiring not in compliance with electrical codes or SPECTRA user manual specifications, or failure to provide reasonable care and necessary maintenance as outlined in the user manual.
3. Warranty of all SPECTRA products applies to residential use only and is void when products are used in a nonresidential environment or installed outside the United States.

This warranty gives you specific legal rights, and you may also have other rights which vary from state to state. TO OBTAIN SERVICE please remove all batteries (if any) and pack the unit carefully and send it freight prepaid to SPECTRA at the address shown below. IF THE UNIT IS RETURNED WITHIN THE WARRANTY PERIOD shown above, please include a proof of purchase (dated cash register receipt) so that we may establish

your eligibility for warranty service and repair of the unit without cost. Also include a note with a description explaining how the unit is defective. A customer service representative may need to contact you regarding the status of your repair, so please include your name, address, phone number and email address to expedite the process.

IF THE UNIT IS OUTSIDE THE WARRANTY PERIOD, please include a check for \$50.00 to cover the cost of repair, handling and return postage. All out of warranty returns must be sent prepaid.

It is recommended that you contact SPECTRA first at 1-800-777-5331 or by email at [custserv@spectraintl.com](mailto:custserv@spectraintl.com) for updated information on the unit requiring service. In some cases the model you have may be discontinued, and SPECTRA reserves the right to offer alternative options for repair or replacement.

SPECTRA MERCHANDISING INTERNATIONAL, INC.

4230 North Normandy Avenue,  
Chicago, IL 60634, USA. 1-800-777-5331

To register your product, visit the link on the website below to enter your information.  
<http://www.spectraintl.com/wform.htm>

0515

Printed in China