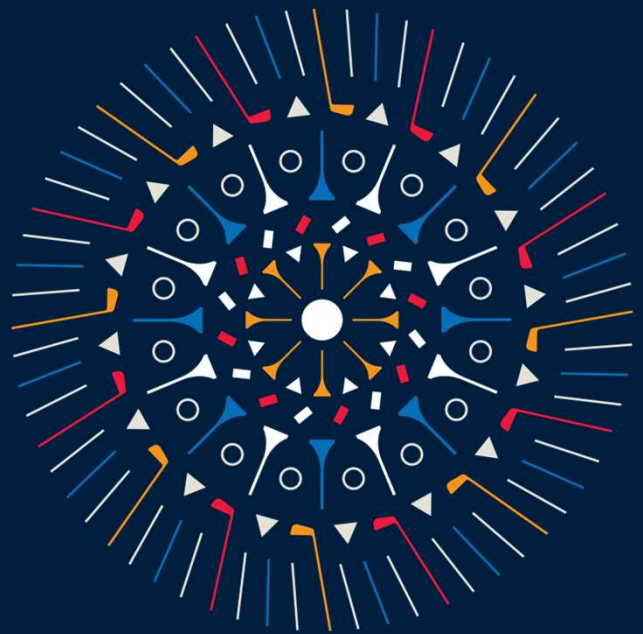


AIMW10

User Manual

GolfBuddy Range Finder





Overview

1. What's Included



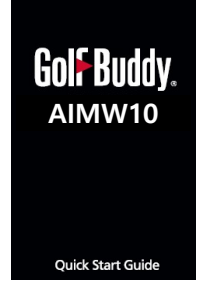
AIMW10



Charging Dock



USB Cable (Micro 5pin)



Quick Start Guide

2. Device Overview



Power & Features

- Power & Screen ON/OFF, Previous Page
- Screen Lock ON/OFF
- End Golf Mode

3. Screen Description



[Power ON]



[Main Menu]



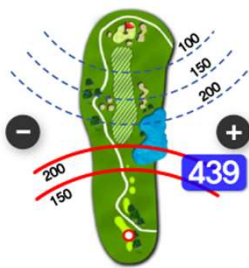
[Sub Menu]



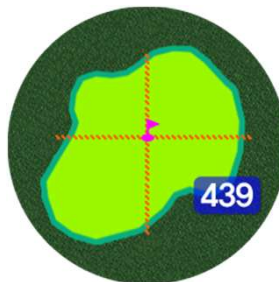
[Settings]



[Hole Information]



[Hole View]



[Green View]



[Golf Settings]

4. Overview of Play Golf Features

■ 'Main Menu' → Tap 'Play Golf' icon to automatically search for the golf course.
 ※ GPS searching may take up to 2 minutes, or follow the instruction if the GPS signal is weak.

■ On 'Hole Information' screen, swipe right to left to navigate Hole View, Green View, and Golf Settings

▶ Screen Layout

- H01.P4: Hole / Par (Tap to change hole)
- 326: Distance to the Back of the Green
- Toggle Left/Right Green: L/R icon
- 312 Y: Meter(M) / Yard(Y)
- Distance to the Center of the Green: 439
- 297: Distance to the Front of the Green
- Score -1: Scorecard (Tap to enter/edit)

▶ Hole Layout

- Red Dot: Current location
- Red Arc: Distance from current location
- Blue dotted Arc: Distance from Center location
- +/- : Zoom In/Out

▶ Green View & Pin Placement

- Green Layout
- Tap and hold the screen for 2 seconds → Pin placement mode → Change pin location → New distance to the pin
- ※ Green undulation data only available for some courses, but growing

누르면 Golf Play

▶ Golf Setting



■ Distance Unit, Screen Always on /Off, Dimming mode On/Off, Screen brightness

※ Screen brightness / Always on mode will reduce the battery life.

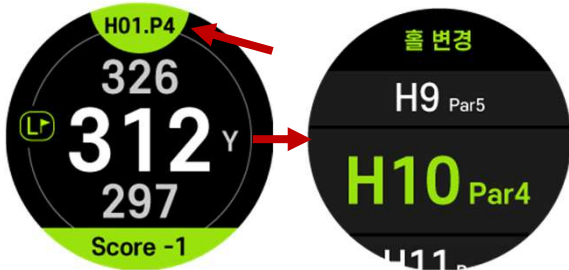
▶ Scorecard



■ Tap the Score → Select the desired hole → Scroll up/down to select the correct 'Score' & 'Putt' and tap 'OK' to complete

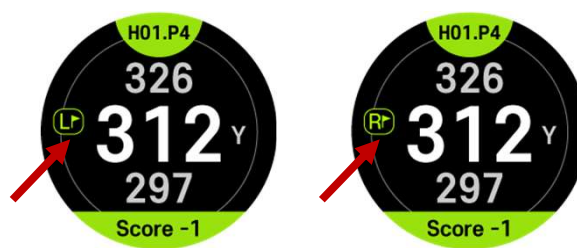
※ Entered scorecard can be viewed/edited in the menu.

▶ Manual Hole Selection



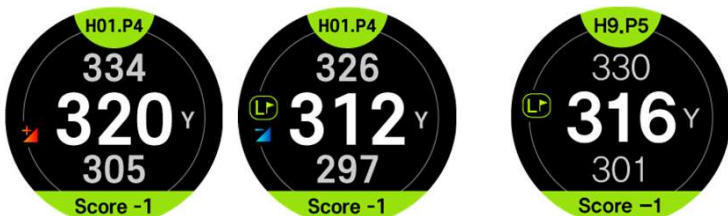
■ Tap Hole & Par top → Change the hole by scrolling up or down

▶ Change Left/Right Green



■ Tap the L/R → Change the L/R green

▶ 고저(Slope)



[(Slope) ON]
Uphill Downhill

[(Slope) OFF]

■ 'SLOPE' → Depending on the Golf setting 'Slope On/Off' you will have access to the following:

[Slope ON] : W10 shows slope compensated distances. Icons indicate Uphill or Downhill

[Slope OFF] : Distance are straight

※ Slope information only available in S. Korea

누르면 Golf Play

▶ Screen Lock Feature



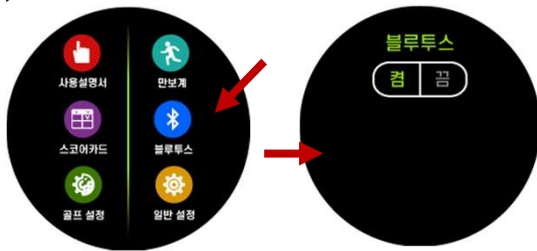
- Press the Power & Features button 3 times to lock/unlock the screen

▶ Date/Time/Battery Indicator



- Swipe top to bottom from Hole Layout screen
- ※ Return to previous screen by waiting 2~3 seconds or swipe bottom to top

▶ Bluetooth



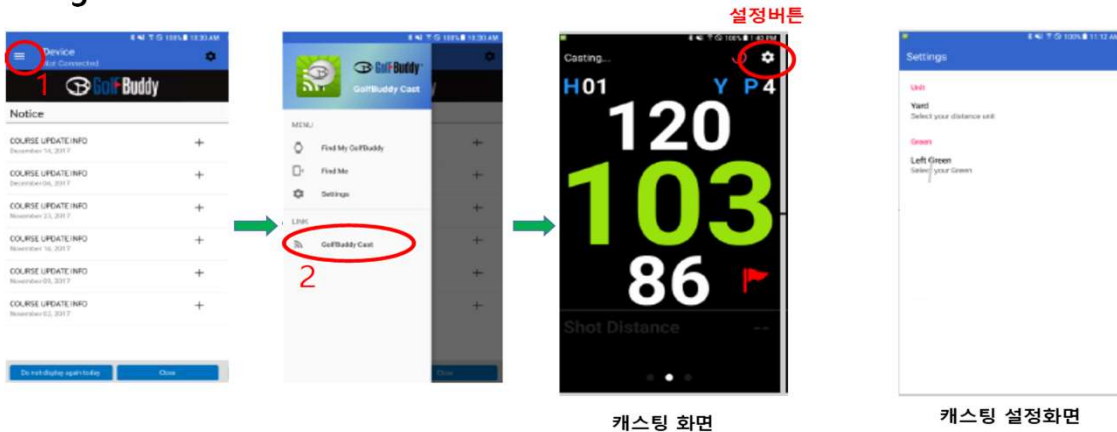
- 'Main Menu' → Tap Bluetooth On/Off to connect or disconnect with your mobile device
- ※ Turn on Bluetooth on your mobile device to pair

[Bluetooth Pairing]

1. Run GOLFBUDDY app on your mobile device
2. After login, select Find my GOLFBUDDY from the menu
3. Choose AIMW10 from the menu to complete pairing

- ※ Download the 'GOLFBUDDY Smart' App from either Android Play Store or Apple App Store
- ※ Visit <http://www.golfbuddy.com> for more information on App download and Bluetooth pairing

▶ Casting



캐스팅 화면

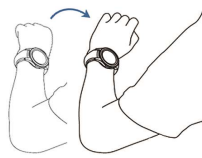
캐스팅 설정화면

1. Run the GOLFBUDDY Smart App when AIMW10 is connected with your mobile device
2. Tap 'GOLFBUDDY Cast' from the menu
3. Your mobile screen will show "casted" information from the AIMW10

▶ Motion Recognition



- 'Main Menu' → 'Motion Recognition On/Off'
- [On] : Use arm gesture (raise/down) to turn on/off the screen
- [Off] : Use button only to turn on/off the screen
- ※ Motion Recognition is On by default



[Motion Recognition On]

[Motion Recognition Off]

5. Factory Reset & Software Update

'Reset the device to factory setting by tapping 'Reset' icon from the menu

Use GolfBuddy GB Manager to gain access to latest firmware and free course updates for 40,000+ golf courses in 170+ countries

Visit our website at www.golfbuddyglobal.com for more information on downloading the GB course Manager to access the latest firmware & course updates

6. Disclaimer

- Please remove all the stickers before using..
- The W10 is water resistant and not water proof. Keep the device away from water or high humidity. Any defects caused by improper use might void the warranty.
- Functions will be limited in indoor due to lack of satellite reception
- Reset the unit, when you experience abnormal behavior or distance readings
- Use of 5V/300mA adapter is recommended as fast charging adapters may damage the unit.
- Charging and storing the unit at extreme temperatures (-40° to 140° F, -40° C to 60° C) will harm the unit and void the warranty
- Date and time settings will be reset, when the battery is depleted and will have to be set again, once fully charged.

※ Images on the manual may change after software update.

-LIMITED WARRANTY-

Warranty Period

GOLFBUDDY products come with a limited warranty against defects in materials and workmanship when used under normal consumer use for a period of one (2) year ("Limited Warranty"). The Limited Warranty begins to run from the date of original retail purchase. GOLFBUDDY, at its sole and absolute discretion, shall either (i) replace or repair the defective part(s) or the unit with a new or reconditioned part(s), or (ii) issue a credit for the parts or products that are covered under the Limited Warranty.

Eligibility

This Limited Warranty is applicable only to the original authorized purchasers who purchase the products for resale and/or end users of the products. All authorized distributors shall provide its customers a copy of this Limited Warranty and communicate any and all waivers and limitations contained in this Limited Warranty. No unauthorized modifications to or unauthorized representations made by distributors will be valid or honored. The purchaser must present the original purchase receipt showing the date of purchase, place of purchase, and amount paid for the product in question, at the time a warranty claim is filed. The product must be in its original packaging along with all associated accessories and instruction manuals.

Warranty Claim Procedures

To obtain warranty repair service, you must contact GOLFBUDDY technical support at support@golfbuddyglobal.com and obtain a Return Authorization Number. All returned products must be accompanied by an original purchase receipt and the Return Authorization Number. Any products that are returned without the requisite information shall be returned at the purchaser's cost and expense.

Warranty Exclusions

Except against defects in material and workmanship and as expressly warranted by GOLFBUDDY, GOLFBUDDY Disclaims all warranties, express and implied, applicable to products, including, without limitation, any warranty of merchantability or fitness for a particular purpose and any warranty that any products is delivered free of claims of third parties by way of infringement or the like. GOLFBUDDY disclaims all express and implied warranties applicable To products accessories and products which are not manufactured by GOLFBUDDY. GOLFBUDDY further disclaims all warranties applicable to products which are accepted by purchaser but are subsequently damaged as a result of the following events:

- » Product purchased through the internet, other e-commerce channels, or any distributor or retailer that obtained the Product from a supplier or distributor not authorized by GOLFBUDDY.
- » Any and all loss or damage to the product during transit.
- » Improper or non-recommended use, storage or handling of the product, use of product with non-GOLFBUDDY components such as USB cables or charges, misuse, operation at settings other than those recommended or specified, non-compliance with instructions or guidelines set forth in the User's Operation Manual.
- » Modification or alteration of the Product in any manner, including but not limited to, removal or addition of any component or part by purchaser or unauthorized service provider, or any accidental or intentional damage to the product.
- » Any loss of software, firmware, data information, memory data contained on any products returned to GOLFBUDDY for repair, or those modifications necessary due to a change in the GPS made by the U.S. government or any other governmental agencies.
- » Use of product in contravention with the laws of any country.

Limitation of Warranty

GOLFBUDDY SHALL NOT IN ANY EVENT BE LIABLE FOR INDIRECT, SPECIAL, CONSEQUENTIAL OR LIQUIDATED DAMAGES OR PENALTIES, INCLUDING CLAIMS FOR LOST REVENUE, PROFITS OR BUSINESS OPPORTUNITIES, EVEN IF GOLFBUDDY HAD OR SHOULD HAVE HAD ANY KNOWLEDGE, ACTUAL OR CONSTRUCTIVE, OF THE POSSIBILITY OF SUCH DAMAGES. GOLFBUDDY'S TOTAL LIABILITY FOR ANY CLAIM ARISING HEREUNDER SHALL NOT EXCEED THE PURCHASE PRICE WHICH PURCHASER PAID FOR THE PRODUCT.

Motherboards

WARNING: Products with exposed solder may contains lead, a chemical known to the State of California to cause birth defects and other reproductive harm. Please wash hands after handling internal components and motherboards and avoid inhalation of fumes if heating the solder.

How to Obtain Warranty Service or Other Information

USA	Deca International Corp. dba GolfBuddy 10700 Norwalk Blvd. Santa Fe Springs, CA 90670
------------	--

FCC ID: 2ALG4AIMW10

Changes or modifications not expressly approved by the party responsible for compliance could void the user's authority to operate the equipment.

This device complies with Part 15 of the FCC Rules. Operation is subject to the following two conditions: (1) this device may not cause harmful interference, and (2) this device must accept any interference received, including interference that may cause undesired operation.

This equipment has been tested and found to comply with the limits for a Class B digital device, pursuant to Part 15 of the FCC Rules. These limits are designed to provide reasonable protection against harmful interference in a residential installation. This equipment generates, uses and can radiate radio frequency energy and, if not installed and used in accordance with the instructions, may cause harmful interference to radio communications. However, there is no guarantee that interference will not occur in a particular installation.

If this equipment does cause harmful interference to radio or television reception, which can be determined by turning the equipment off and on, the user is encouraged to try to correct the interference by one or more of the following measures:

- Reorient or relocate the receiving antenna.
- Increase the separation between the equipment and receiver.
- Connect the equipment into an outlet on a circuit different from that to which the receiver is connected.
- Consult the dealer or an experienced radio/TV technician for help.

This device complies with FCC RF radiation exposure limits set forth for an uncontrolled environment. This transmitter must not be co-located or operating in conjunction with any other antenna or transmitter

GOLFZON
DECA



FCC ID: 2ALG4AIMW10

FCC WARNING:

Changes or modifications not expressly approved by the party responsible for compliance could void the user's authority to operate the equipment.

This device complies with Part 15 of the FCC Rules. Operation is subject to the following two conditions: (1) this device may not cause harmful interference, and (2) this device must accept any interference received, including interference that may cause undesired operation.

This equipment has been tested and found to comply with the limits for a Class B digital device, pursuant to Part 15 of the FCC Rules. These limits are designed to provide reasonable protection against harmful interference in a residential installation. This equipment generates, uses and can radiate radio frequency energy and, if not installed and used in accordance with the instructions, may cause harmful interference to radio communications. However, there is no guarantee that interference will not occur in a particular installation.

If this equipment does cause harmful interference to radio or television reception, which can be determined by turning the equipment off and on, the user is encouraged to try to correct the interference by one or more of the following measures:

- Reorient or relocate the receiving antenna.
- Increase the separation between the equipment and receiver.
- Connect the equipment into an outlet on a circuit different from that to which the receiver is connected.
- Consult the dealer or an experienced radio/TV technician for help.

This device complies with FCC RF radiation exposure limits set forth for an uncontrolled environment. This transmitter must not be co-located or operating in conjunction with any other antenna or transmitter