

Golf Buddy®

VOICE



Quick Start Guide

www.golfbuddyglobal.com

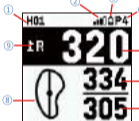
VER. 1.0.0.0

DEVICE OVERVIEW

Button Overview



Screen Description



Menu Overview



Keys	Function
1	Select one menu among Golf, Pedometer, Tracker, and Settings. Press and Hold to turn the device on and off.
2	Select to return to the previous menu. Exit the Golf Mode.
3	Select to move through menus, holes, and settings.
4	Select to move through menus, holes, and settings.
5	During play, select to play the voice.

- 1 Hole Number
- 2 Satellite indicator
- 3 Battery indicator
- 4 Par info
- 5 Distance to the center of the green

Menu	Description
	Golf Mode
	Bluetooth Setting
	Tracker (GPS Odometer)
	Settings (Display, Clock, Unit, Language, About)

- 6 Distance to the back of the green
- 7 Distance to the front of the green
- 8 Dynamic Green View
- 9 Left/Right Green Selection

VOICE

Settings

Display	Color Theme, Orientation
Clock	Date, Time, Time format
Units	Meter / Yard
Language	Multi language
About	Information(Device, S/N etc.)

GETTING STARTED

Power On/Off

- Press and Hold button 1 for 3 seconds to turn the VOICE ON/OFF.
- After Power-on, 4 icons will be displayed on screen.
- Golf Play Mode will start automatically 20 seconds after power-on.
- If you select another menu option before Golf Mode starts automatically, Golf Mode will not start. You will have to start Golf Mode manually by selecting it from the menu later on.

Charging

- When power gets critically low, all functions are disabled and "LOW POWER" message will be displayed.
- Plug the USB cable into any standard USB Power Adapter. Then plug the USB power adapter into an electric socket. This USB cable is compatible with USB ports found on computers, laptops, automobiles, or standard 5V AC USB chargers.
- Plug the Micro USB cable into the Micro USB socket of the VoiceX. Then the screen shown in the image to the right will display when the device is connected to the USB charging cable. This screen indicates USB data connection as well as battery charging.
- The battery indicator will display while charging, and will display 100% when fully charged. Then, remove the Micro USB cable from device.
- If your VoiceX battery display is empty when connected and shows a low-battery icon, it indicates that a full charge has not been achieved. Check your connection to make sure the cable is properly aligned with the connector, and then allow the VoiceX to charge until the battery shows 100%.

*** IMPORTANT : DO NOT USE QUICK-CHARGER AC ADAPTERS TO CHARGE THE VOICEX. DOING SO MAY CAUSE DAMAGE AND VOID THE WARRANTY. AC ADAPTERS SHOULD NOT EXCEED 5.0V. CHECK YOUR AC ADAPTER'S RATING PRIOR TO USING.**

VOICE

Connecting VOICE to the mobile phone

- DECA is not responsible for the loss, interception, or misuse of data sent or received via Bluetooth.
- Always ensure that you share and receive data with devices that are trusted and properly secured. If there are obstacles between the devices, the operating distance may be reduced.
- Some devices, especially those that are not tested or approved by the Bluetooth SIG, may be incompatible with your device.
- Do not use the Bluetooth feature for illegal purposes (for example, pirating copies of files or illegally tapping communications for commercial purposes).
- DECA is not responsible for the repercussion of illegal use of the Bluetooth feature.

- VOICEX** Connecting VOICE to PC: The VOICE can be connected to PC for transfer data via USB port.
- On the Bluetooth Setting menu,
 1. Turn the Power and Visibility on and your VoiceX will automatically enter pairing mode.
- Mobile phone**
2. Open the GolfBuddy Smart App on your mobile phone
 3. Log In and Select **Find My GolfBuddy** in the menu.
 4. Tap + to see a list of compatible devices available to add
 5. Tap your VOICEX among the found device list.
 6. Follow the on-screen instructions to complete the connection.

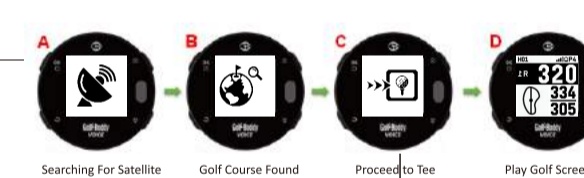


VOICE

BASIC OPERATION

Play Golf mode

- From the main menu screen, use toggle buttons 3 and 4 to get to the Golf Mode icon and then press button 1 to enter Golf Mode. After Play Golf is activated, screen A is displayed.
- Once the golf club is found, screen C will be shown to proceed to the Tee Box.
- Once you arrive at the Tee Box, screen D will be displayed. and distances will be shown.



Voice information for Distances to the Green

- In Golf Mode, when you press button 5, the VoiceX will verbally tell you distance to the center of the green.
- Press and hold button 5 and the VoiceX will tell you distance to the front and back of the green.

BASIC OPERATION

Voice Volume Control

- Using Menu**
- From Golf Mode, press button 1 to go to the full menu screen.
 - Select "VOLUME" by using the toggle buttons 3 and 4 and then press button 1 to go to the Volume controlling screen.
 - Use toggle buttons 3 or 4 to control volume or set it to mute.



- Using Hotkey**
- From Golf Mode, Press and hold button 4 to adjust the volume

Select Voice

- You can choose a gender of voice (MALE and FEMALE) by selecting "VOICE" and pressing button 1.



VOICE

VOICE

Warranty

GolfBuddy products come with a limited warranty against defects in materials and workmanship when used under normal consumer use for a period of one (1) year ("Limited Warranty").

The Limited Warranty begins to run from the date of original retail purchase. GolfBuddy, as its sole and absolute discretion, shall either (i) replace or repair the defective part(s) or the unit with a new or reconditioned part(s), or (ii) issue a credit for the parts or products that are covered under the Limited Warranty.

To obtain warranty repair service, visit <http://help.golfbuddyglobal.com> or email GolfBuddy technical support at support@golfbuddyglobal.com to obtain a Return Authorization Number.

All returned products must be accompanied by an original purchase receipt and the Return Authorization Number.

Any products that are returned without the requisite information shall be returned at the purchaser's cost and expense.

FCC Statement (USA)

1. NOTE: This equipment has been tested and found to comply with the limits for a Class B digital device, pursuant to part 15 of the FCC Rules.

These limits are designed to provide reasonable protection against harmful interference in a residential installation.

This equipment generates uses and can radiate radio frequency energy and, if not installed and used in accordance with the instructions, may cause harmful interference to radio communications.

However, there is no guarantee that interference will not occur in a particular installation.

If this equipment does cause harmful interference to radio or television reception, which can be determined by turning the equipment off and on, the user is encouraged to try to correct the interference by one or more of the following measures:

- Reorient or relocate the receiving antenna.
- Increase the separation between the equipment and receiver.
- Connect the equipment into an outlet on a circuit different from that to which the receiver is connected.

- Consult the dealer or an experienced radio/TV technician for help

2. Changes or modifications not expressly approved by the party responsible for compliance could void the user's authority to operate the equipment.

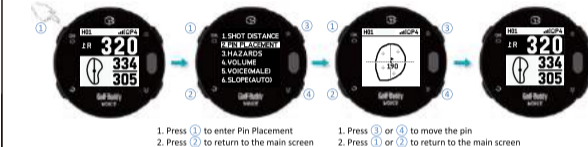
3. This device complies with Part 15 of the FCC Rules. Operation is subject to the following two conditions:

- (1) This device may not cause harmful interference, and
- (2) This device must accept any interference received, including interference that may cause undesired operation.

VOICE

Pin Placement

- From Golf Mode, press button ① to go to the menu list. With toggle buttons ③ and ④ find the "Pin Placement", then press button ① to go to "Dynamic Green View" screen.
- From Dynamic Green View screen, you can change the placement of the pin with toggle buttons ③ and ④.
- After pin placement, you can return to the golf screen by pressing button ① or ②.



Measuring Shot Distance

- From Golf Mode, press button ① to show the full menu, then with toggle buttons ③ and ④ go to the "Shot Distance" and select by pressing button ①.
- Press and hold button ④ to reset the distance.
- From Shot Distance Mode, the VOICEX will return to the main screen by pressing any button.



BASIC OPERATION

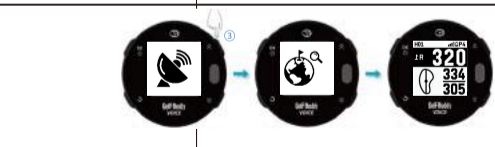
Exit Golf Mode

- From Play Golf Mode, press and hold button ②, then the VoiceX will display a prompt to confirm your selection.
- If you want to end Golf Mode, press button ① to confirm your selection.
- Alternately, if you want to keep playing golf, press any button to return to Golf Mode.



How to use the Demo Mode

- To view the function of GOLF mode while away from the golf course, you can put the VOICEX into "Demo mode". To enter "Demo mode", when you see your device is searching for satellite, press and hold button ③ for 3 seconds.



VOICE

Quick Watch Mode (Sunrise/Sunset Time)

- In Golf Mode, press button ② to go to "Quick Watch Mode" where the current time, sunrise and sunset times will be displayed. The VoiceX will automatically tell you the current time.
- The Quick Watch Mode will be displayed for 5 seconds and will automatically return to Golf Mode. Or, instead of waiting, press button ② and it will return to Golf Mode immediately.



Automatic Hole Recognition

- The VOICE will automatically advance to the next hole as you play through the course.
- Please note, in rare instances, it may be necessary to manually advance to the next hole by using toggle buttons.
- Also, VOICEX will automatically tell you the hole number and distance to the center of the green.

Manual Hole Selection

- To change from the current hole to the next hole in Play Golf Mode, press button ③.
- To change from the current hole to the previous hole in Play Golf Mode, press button ④.
- Also, VOICEX will tell automatically you the hole number.



VOICE

BASIC OPERATION

Distance to the Green

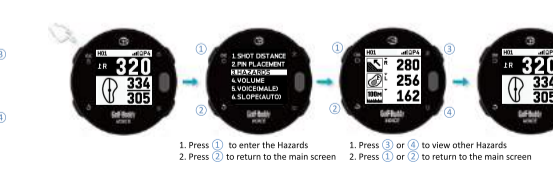
- Press and hold button ③ to switch between main screens A, B, C and D shown below.



- **Dual Green View (C) will be available only when there are both Left and Right Greens on the hole.**

Target / Hazard Information

- Select "HAZARDS" by using the toggle buttons ③ and ④. Press button ① to view Hazard information.
- When more than 3 hazards are available, use toggle buttons ③ and ④ to view the next hazard.



VOICE

