

Wireless USB Phone

User's Manual

Safety Instructions

Always read the safety instructions carefully

- Keep this User's Manual for future reference
- Keep this equipment away from humidity
- If any of the following situation arise, get the equipment checked by a service technician:
 - The equipment has been exposed to moisture.
 - The equipment has been dropped and damaged.
 - The equipment has obvious signs of damage.
 - The equipment has not been working well or you cannot get it working according to User's Manual.

Copyright Statement

No part of this publication may be reproduced in any form by any means without prior written permission. Other trademarks or brand names mentioned herein are trademarks or registered trademarks of their respective companies.

Disclaimer

Information in this document is subject to change without notice. The manufacturer does not make any representations or warranties (implied or otherwise) regarding the accuracy and completeness of this document and shall in no event be liable for any loss of profit or any commercial damage, including but not limited to special, incidental, consequential, or other damage.

Skype is a registered trademark of Skype Technologies SA. Windows is a registered trademark of Microsoft Corporation.

About User's Manual

This user's manual and the provided software on the CD are based on Skype 2.0. As Skype upgrades occasionally, for the software compatible with the latest Skype version, please contact your supplier.

May 2006, Rev1.0

Table of Contents

1. Introduction	1
Features	1
Package Contents	2
System Requirements.....	2
Exterior Overview.....	3
Keypads and Controls.....	3
USB Dongle LED Status	4
2. Installation on Host Computer	5
Installing Skype Software	5
Installing SkyWin Software	5
Installing the USB Dongle	7
Accessing SkyWin Functions	8
Managing SkyWin Access to Skype	9
3. Establishing the Connection.....	11
Step 1. Ensure the link status on the host computer.....	11
Step 2. Power on the Wireless Phone Handset.....	11
Verifying the Link Status via the LCD.....	12
Notes on Establishing Wireless Link	13
4. Getting Started	14
LCD Screen.....	14
LCD Indicators	14
LCD Language.....	15
Charging the Phone	15
Standby Mode	16
Always Link Function.....	17
Resetting the Wireless Phone.....	18
About the Speaker and Microphone Volume	18
5. Using the Phone with Skype	19
Calling a Skype User.....	19
Initializing a Call from Host Computer	20
Speed Dialing.....	20
Answering a Call.....	21
Ending / Rejecting a Call	21
Holding a Call	21
Muting.....	22
Clearing the Entered Numbers.....	22

Using SkypeOut to Call Regular Phones	22
Making a SkypeOut Call	23
Using the Key Pad to Enter SkypeOut Number.....	23
Adding a SkypeOut Number to Contact List.....	23
Loading Phone Number via Contact Info	24
Missed Calls.....	25
Loading Calls List.....	26
Clearing Calls List	27
Skype Status and Response Mode	27
6. Using the LCD Setting Menu	28
Viewing Information of Your Contact.....	28
Using Options Menu to Adjust Phone Settings.....	29
Menu Navigation.....	31
7. Using with Instant Messenger Software.....	32
8. Troubleshooting	34
9. Specifications	37
10. Regulatory Compliance	39
FCC Conditions	39
CE	39
WEEE Information	39

1. Introduction

Utilizing 2.4 GHz RF technology, this Wireless USB Phone allows you to freely roam around when making Skype™ calls over the Internet; no need to be bound with USB cable anymore! If you have SkypeOut credits, you can even make calls to regular phones, turning this wireless phone into a regular mobile phone.

The wireless phone handset is paired with one transceiver dongle. Just plug the dongle to your computer, install the software and it's ready to use. The handset implements a display with an easy-to-use interface and a couple of editable settings, such as ringtones, ringing volume and so on, so that you can personalize the wireless phone to adapt to your needs.

What's more, the wireless phone features Adaptive frequency hopping (AFH) solution to mitigate radio interference in the popular 2.4GHz frequency band. This ensures you a stable wireless communication while experiencing the wireless convenience.

Features

- Extends your Skype by wireless technology, bringing you more convenience
- Utilizing RF 2.4GHz radio frequency
- Using Adaptive frequency hopping (AFH) solution to mitigate radio interference in 2.4GHz frequency band
- Wireless transmission range of up to 30M (outdoor) and 15M (indoor)
- Supports Skype hot-keys functions that are as easy as dialing normal telephone
- Dials to regular phone number using SkypeOut credits
- LCD with multiple languages support
- As compact as a mobile phone, easy to carry
- Echo-cancellation for better sound quality
- Selectable wireless phone settings, e.g. calling/holding ringtone
- Li-Polymer battery rechargeable via USB
- Standby mode to reduce power consumption

Package Contents

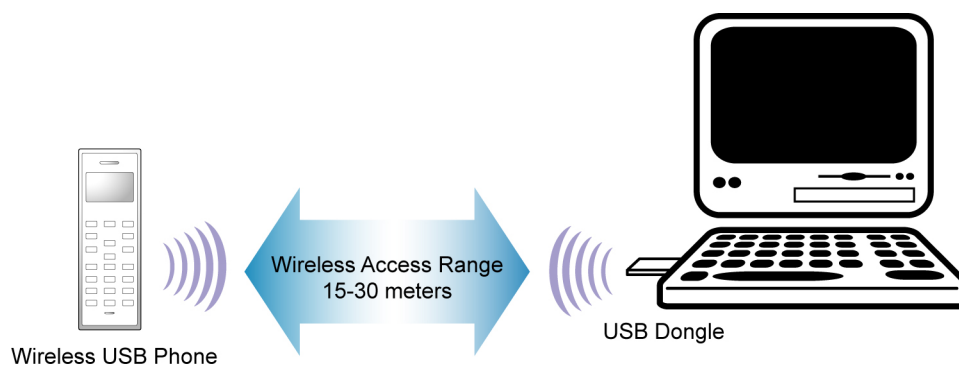
- Wireless USB Phone x1
- USB Dongle x1
- USB Cable x1
- Software Utility CD* x1
- Quick Installation Guide x1

* The provided software and User's Manual on the CD are based on Skype 2.0. As Skype upgrades occasionally, for the software compatible with the latest Skype version, please contact your supplier.

System Requirements

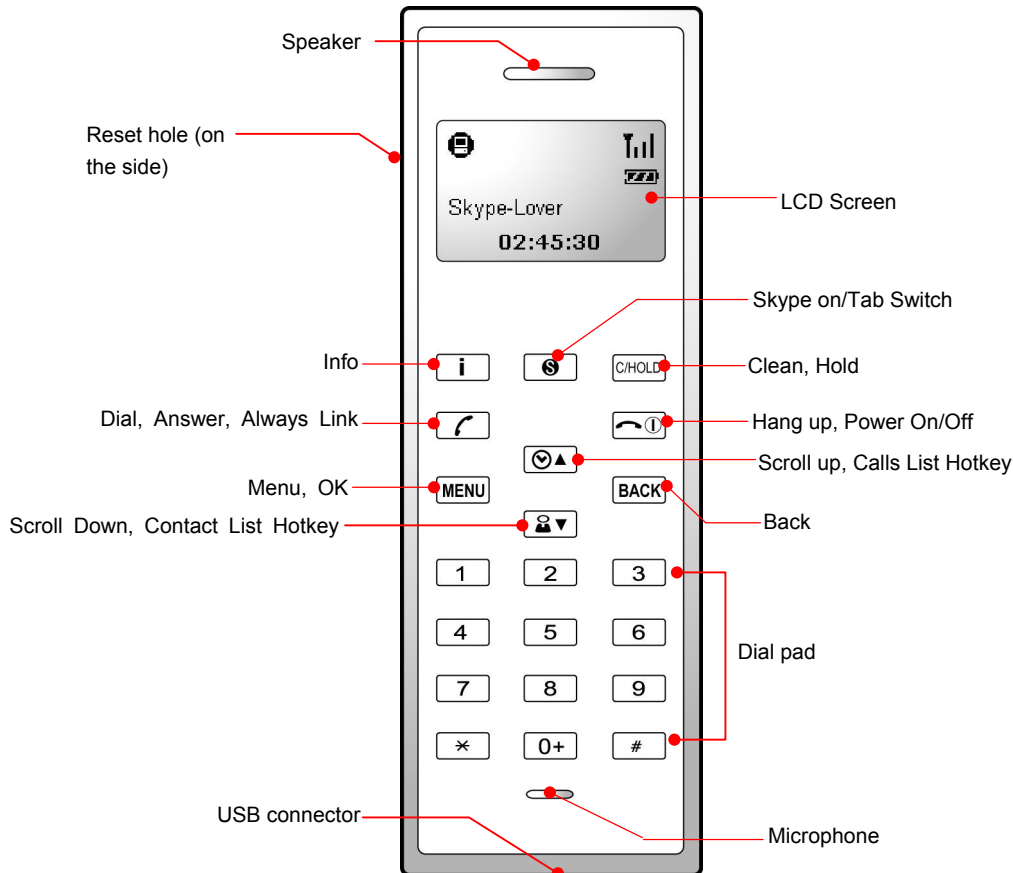
- Computer with an available USB 1.1 port or higher
- To use Skype with the wireless phone, your computer must meet the following minimum system requirements**:
 - PC running Windows® 2000 or XP.
 - 400 MHz processor
 - 128 MB RAM
 - 15 MB free disk space on your hard drive
 - Internet Connection

* The requirements are subject to Skype software. For the latest requirements, please visit the Skype website.


















Exterior Overview

The appearance of your handset varies depending on your model. The following illustration is an example providing you with the keypad functions at a glance:



Keypads and Controls

Icon	Function	Description
i 	Info	Displays contact information/status menu (when a contact is displayed on the LCD).
 	Skype on/ Tab Switch	Opens the Skype window and switches between tabs. Long press to close Skype window.
CLS (C) HOLD	Clear Hold	Press briefly to clear the last one of entered number. Long press to clear all the entered number. Places a call on hold. Pressing it again resumes the call.
	Dial/Answer Always Link	Dials or answers a call. Enables always link function.

Icon	Function	Description
  	Hang Up/Reject Power On/Off	Long press the key to power on/off the wireless phone. Ends or rejects a call. Disables always link function.
MENU	Menu, OK	Displays main menu. Enters a menu item or activate a selection.
BACK	Back	Back to previous menu.
  	Scroll Up	Scroll up. Hotkey to calls list.
  	Scroll Down	Scroll down. Hotkey to contact list.
0~9, #, *	Dial pad.	Dial pad. Long pressing 0 enters + sign.
Vol + / -	Volume Up/Down	Increases/decreases the speaker volume during a call.
	Mute	Mutes on/off the microphone during a call.
	USB Connector	USB Mini B type female connector for power charge.

* The key function is activated by pressing the key briefly if not otherwise specified.

** The key icons shown above are for reference only. Actual color and appearance depends on your model.

USB Dongle LED Status

The USB dongle's LED should be lit when plugged to a power-on computer. It shows the RF link status between the wireless phone and the dongle as follows:

Status	Description
Blink once every three seconds	RF link disconnected, standby mode
Solid	Receiving/sending data over the RF link Always link enabled

2. Installation on Host Computer

To use Skype with the wireless phone in Windows 2000/XP, you should install Skype and the provided utility, SkyWin. SkyWin is a tool that enables your wireless phone to communicate with Skype so as to access Skype functionality.

Please follow the instructions in this chapter to complete the installation.

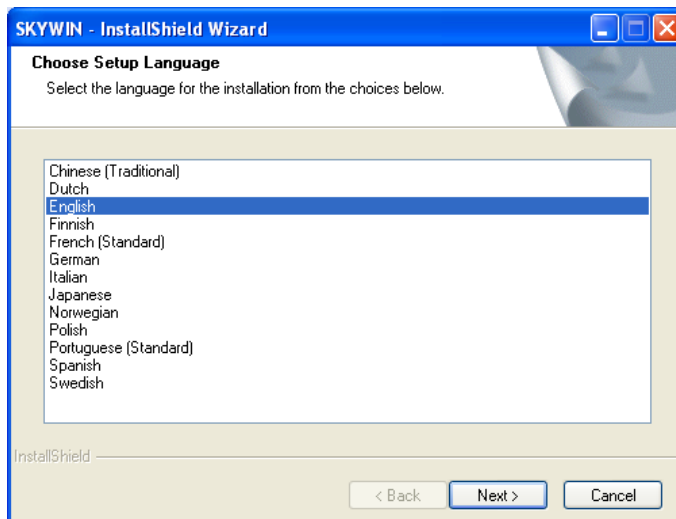
Installing Skype Software

1. If Skype is not yet installed on your computer, please download Skype installation file from **www.skype.com**.
2. Double-click the installation file you've downloaded and then follow the on-screen prompts to complete the installation.

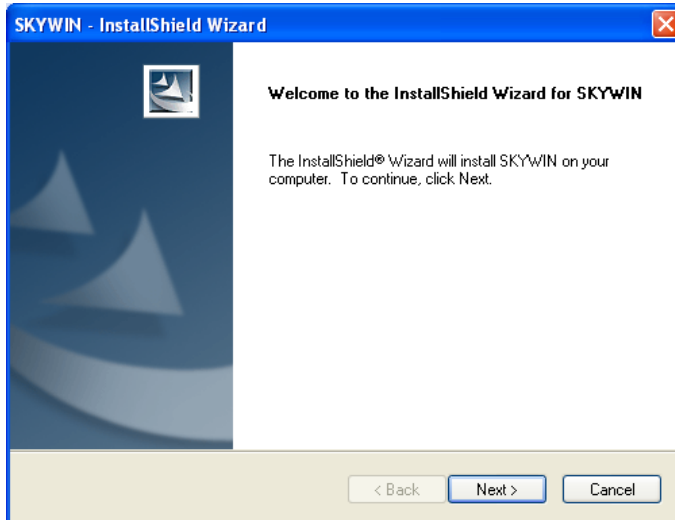
Installing SkyWin Software

Important: You must install the software before you plugging the USB dongle.

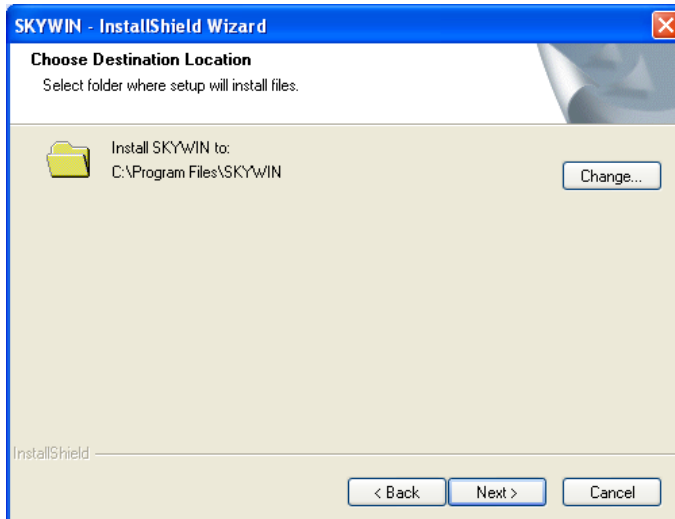
1. Insert the provided Software Utility CD into your CD-ROM drive. The setup program will start automatically. If not, locate and double-click the **Setup.exe** file in **Software** folder to launch the setup program.
2. When the language screen appears, select a language for the installation and then click **Next**.



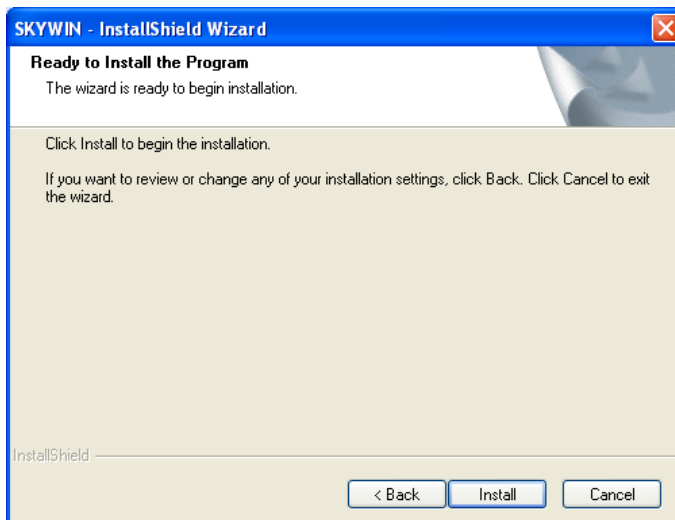
3. When the welcome screen appears, click **Next**.



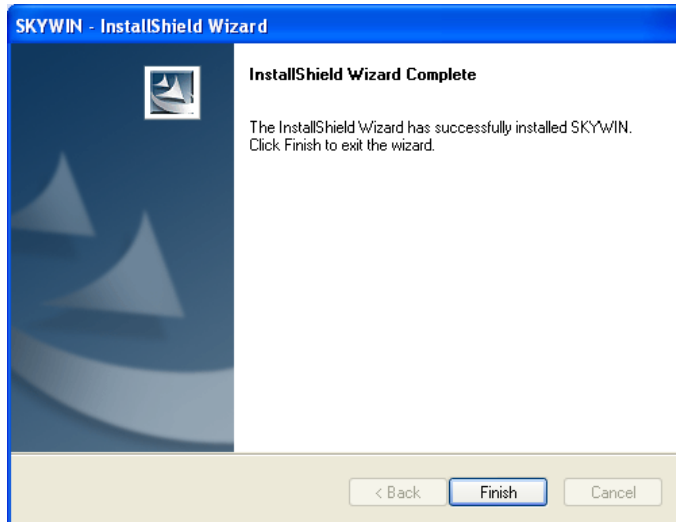
4. Select to install the program in default directory or click **Change** to specify another directory. Then click **Next**.



5. Click **Install** to begin the installation.

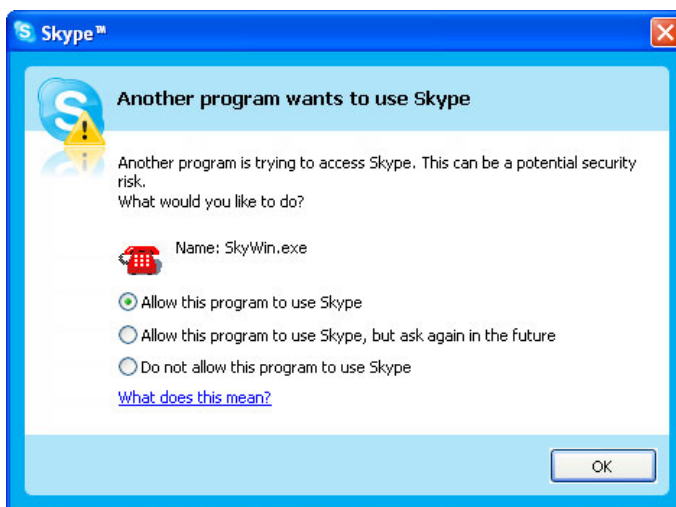


6. Click **Finish** to complete the installation.



Installing the USB Dongle

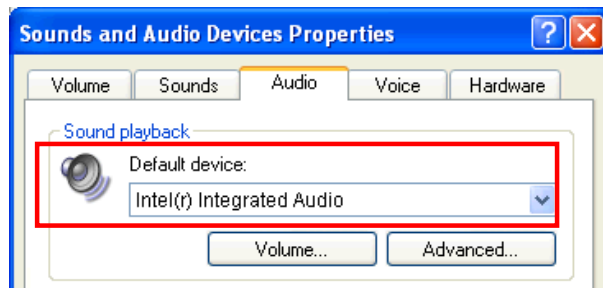
Plug the USB dongle to your computer's USB port. The system will automatically install Windows built-in driver. Whenever the following screen appears, always select **Allow this program to use Skype** and click **OK**. If prompted for system restart, click **Yes**.



Throughout this manual, the computer that is plugged with the USB dongle is referred to as a "host computer".

Note: You will not see this screen if Skype is not active. You can configure it later in Skype window. Refer to "Managing SkyWin Access to Skype" on page 9 for details.

It is possible that **Windows Sound and Audio Devices Properties** window appears at this point. In such a case just click the **Audio** tab and make sure your original audio setting is kept. For example, system sound card is used as the default playback device in most cases for PC music playback.



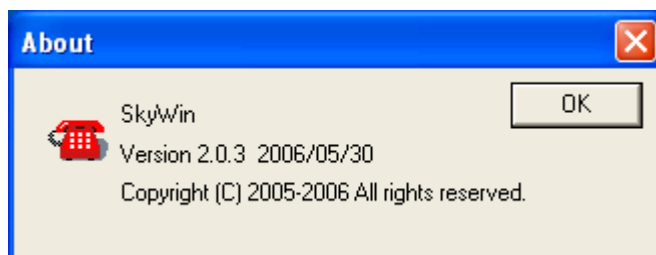
When the dongle is plugged to a USB hub...

If the dongle is plugged to your computer via USB hub, make sure the hub is connected to its power adapter, otherwise insufficient power supply may cause the phone to generate noise during a conversation.

Accessing SkyWin Functions

When you are done with the SkyWin installation, SkyWin starts automatically with its icon located in the system tray. It also starts automatically at system startup. You can right-click the icon and perform the following task:

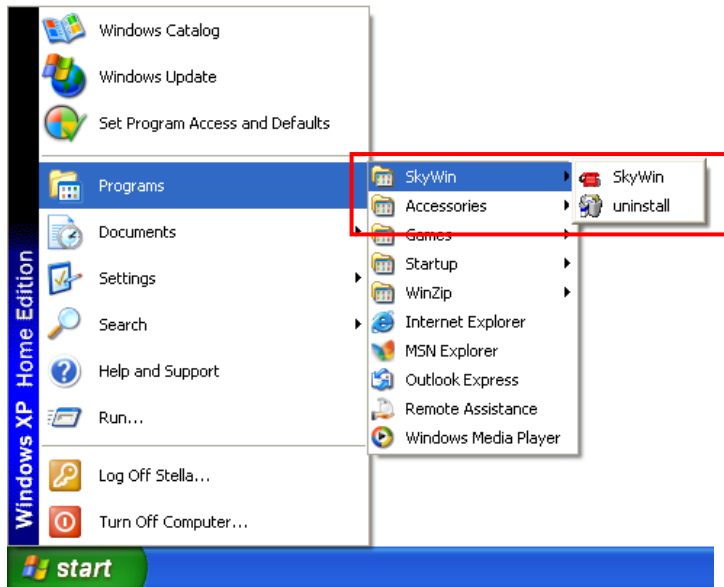
- Click **Select Language** to change the user interface language in SkyWin as well as in the LCD.
- Click **Exit** to quit SkyWin.
- Click **About** to view the version information.



* Actual version number depends on the SkyWin version.

In addition, a SkyWin program group is added to Windows programs menu. Using the programs menu, you can perform these tasks:

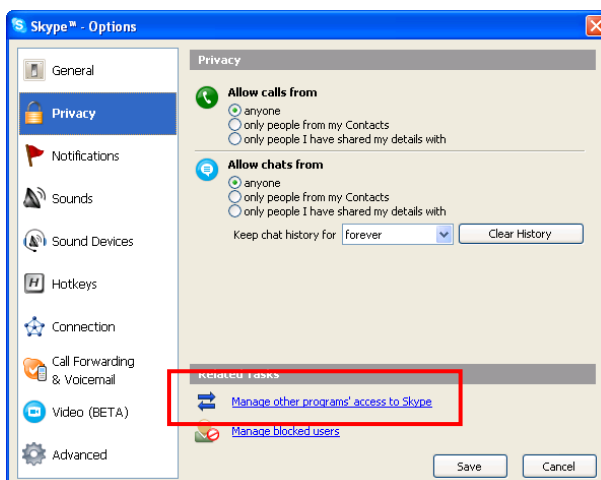
- If SkyWin is closed, you can restart it by selecting **Start > Programs > SKYWIN > SkyWin**.
- Uninstall SkyWin by selecting **Start > Programs > SkyWin > Uninstall**.



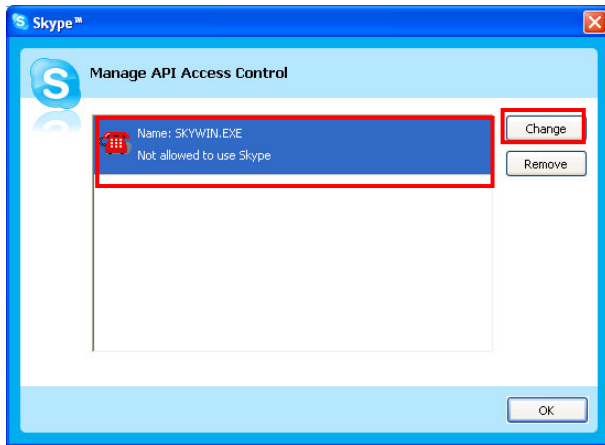
Managing SkyWin Access to Skype

You should always let your SkyWin use Skype so that you can use the wireless phone. If you accidentally select the **Do not allow this program to use Skype** option, open Skype window and take these steps:

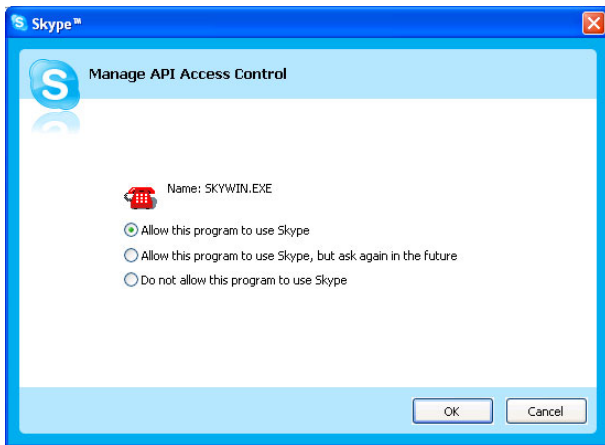
1. Click **Tools > Options > Privacy > Manage other program's access to Skype**.



2. Select **SKYPEWIN.EXE** and click **Change**.



3. Re-select a proper option to let the provided program access Skype.



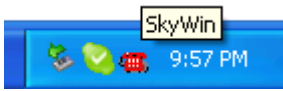
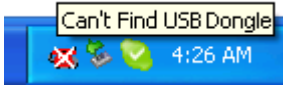
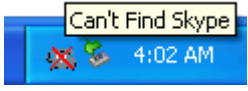
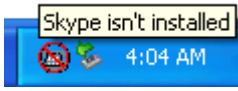
3. Establishing the Connection

Before you start to use the phone, you should first establish the link between the wireless phone and the dongle. The procedures are as follows:

Step 1. Ensure the link status on the host computer.



Make sure that both SkyWin and Skype are active on your host computer and the USB dongle is properly plugged.

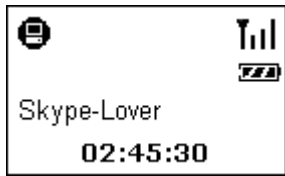
Before using the wireless phone, always make sure the link between the USB dongle, SkyWin and Skype is properly established on your host computer. Placing the cursor over SkyWin systray icon provides you with the communication status as described in the table below.

SkyWin Icon	Link Status
	The USB dongle is plugged. SkyWin and Skype are active. The link is ready now.
	The USB dongle is un-plugged or not properly plugged. Action: Make sure the USB dongle is properly plugged.
	Skype is not active or accidentally terminated or SkyWin is not allowed to access Skype. Action: Launch and log in to Skype and allow SkyWin to access Skype.
	Skype is not installed on your computer. Action: Install Skype on your computer.



Step 2. Power on the Wireless Phone Handset.

To power on the wireless phone, long press the **Power** key until the main screen appears on the display.

When starting up your wireless phone, the signal indicator  and PC indicator  should be displayed on the wireless phone's LCD. Your Skype name and the time of the computer plugged with the dongle should also be displayed.



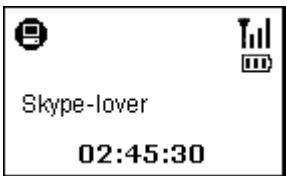
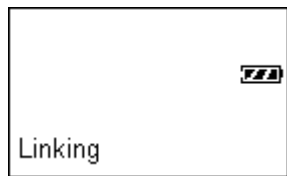

The  and  indicators disappeared ?

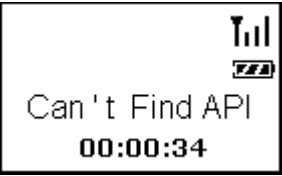


The  and  indicators will disappear in standby mode. If not operated for 20 seconds, the wireless phone automatically enters standby mode and the RF link is temporarily disconnected.

To resume from standby mode, just press the **OK** key on the wireless phone. The RF link will be re-established and the indicators should appear again.

Verifying the Link Status via the LCD

The wireless phone LCD will also display related messages if the communication cannot be established. The following table lists possible screens you will see. Refer to the table to verify the link status and take required action.

Wireless Phone Display	Link Status
	<p>The RF link is established and everything is OK. The wireless phone successfully loads Skype data via the activated SkyWin.</p> <p>You are ready to use the wireless phone.</p>
 	<p>No RF link. The wireless phone cannot find the dongle at startup.</p> <p>Action:</p> <ul style="list-style-type: none"> • It could be the signal is too weak. Move closer to the dongle until the signal indicator appears. • Ensure USB dongle is plugged. • Make sure the host computer is not in standby or hibernation mode.

Wireless Phone Display	Link Status
 <p>Can't Find API 00:00:34</p>	<p>The RF link is established but SkyWin is not active. Action: Launch SkyWin.</p>
 <p>Can't Find Skype 00:00:34</p>	<p>The RF link is established but Skype is not active or SkyWin is not allowed to access Skype. Action: Launch Skype. Also, allow SkyWin to access Skype (refer to “Managing SkyWin Access to Skype” on page 9).</p>
 <p>Standby 02:45:30</p>	<p>Standby mode. To resume for standby mode, just press the OK key on the phone.</p>
<p>N/A</p>	<p>The wireless phone is switched off or running off the power. Action: Power on your wireless phone or charge the wireless phone.</p>

Notes on Establishing Wireless Link

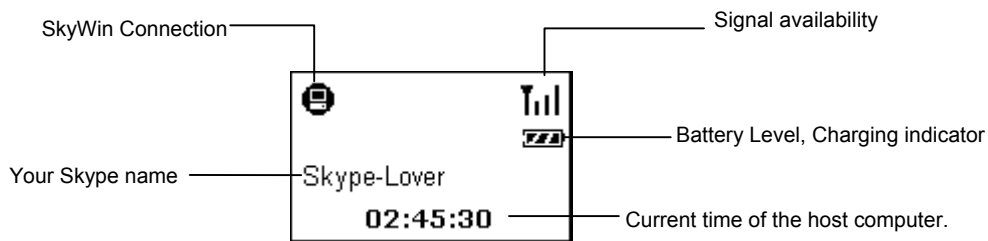
- Your wireless phone and dongle are packaged as an exclusive pair. They share a unique ID to communicate only to each other. This means your wireless phone cannot link to a dongle other than the one delivered with the wireless phone and vice versa. Likewise, you cannot expect the wireless phone to work with multiple dongles and vice versa.
- Currently up to 7 pairs of wireless phone and dongle can co-exist within one radio range. The more pairs are present, the more likely interference will occur and thereby reduce the transmission range.
- The maximum outdoor wireless range is about 30 meters while indoor range is about 15 meters in an open-air environment. If you cannot make the link, move the wireless phone closer to the dongle.
- Other Bluetooth adapters may detect the presence of your wireless phone and USB dongle (which are identified as WBPA-G-Remote and WBPA-G-Dongle). But they cannot build a connection with either of them.

4. Getting Started

Before you start to use the wireless phone, get acquaintance with the phone features and the LCD user interface so that you can get the most of the wireless phone.













LCD Screen

A typical main screen is as below:



Note: The Skype name here refers to the Skype name that Skype users will see, which is configured via **File > My Profile > Full Name** in Skype. If the field is blank, your account name is displayed.

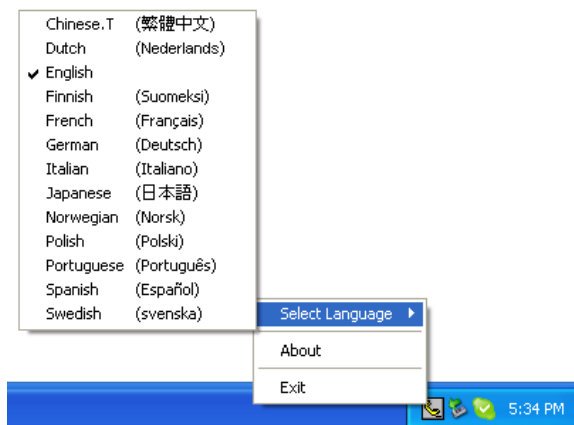
LCD Indicators

	SkyWin availability		Options menu
	Always link		Missed call
	RF signal availability		Calls list
	Battery level		Missed call
	Contact		Incoming call
	Holding a call		Outgoing call

LCD Language

If you want to change the LCD user interface language, right-click on the SkyWin systray icon and click **Select Language**. Then select a language as required. Your selection takes effect immediately and will reflect on the systray menu as well as the LCD user interface.

Note: This selection will not change the popup message language of SkyWin systray icon. The systray message language depends on the language you select during the SkyWin installation process.



About the Contact Name Language

As for the contact names, as long as they are correctly displayed in Skype on the host computer, they should also be correctly displayed in the LCD, regardless of your user interface language.


The character of your contact name is not properly displayed?

If a language is not correctly displayed in Skype, you need to install additional language on your system. Refer to Windows online help for more information.



Charging the Phone

The wireless phone is powered by an internal rechargeable battery. You need to charge the wireless phone battery when:

- Using the wireless phone for the first time (the battery may be not fully charged when shipped).
- The battery is totally flat.
- The battery icon indicates low-battery condition (.

To charge the phone, use a USB cable to connect the phone to a USB port on a power-on computer. During the charge the charging indicator keeps flashing and you can still power on the wireless phone and use it. Once the charge is complete, the charging indicator stops flashing.



When charging a power-off phone





The charging indicator keeps flashing. Once the charge is complete, the LCD turns off automatically.



When charging a power-on phone

The charging indicator keeps flashing. Once the charge is complete, the indicator stops flashing.

The charging time depends on the power remaining. A totally flat battery takes approximately 3 hours to be fully charged.

Battery Indicator	Battery Level
	10% ~ 40%
	40% ~ 80%
	80% ~ Full
	Full

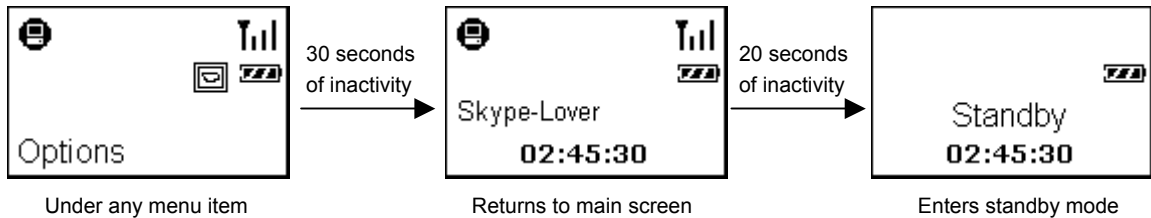
Note: The phone's USB port is only for power charging but not for data transfer. Therefore if you want to use the phone during the charge, you should still have the USB dongle plugged as a medium for communication.

Standby Mode


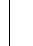
In order to reduce the power consumption, the LCD backlight automatically turns off after 5 seconds of no operation. If no operation lasts for 20 seconds the VoIP RF phone enters standby mode.

If you have entered a menu, if not used for 30 seconds, the screen returns to the main screen and after a sequential 20 seconds of inactivity, the phone enters standby mode.


To resume from standby mode, just press the **OK** key on the wireless phone. The message “Linking” will be briefly displayed and the phone will re-establish the RF link with the USB dongle.



Cannot see the and indicators on the display?

In standby mode the RF link is temporarily disconnected, causing the  and  indicators to disappear from the display. Once you resume from standby mode and the RF link is re-established, the indicators appear again.

Always Link Function

When you press the **Dial / Answer** key, the always link function will be enabled and the indicator  will appear. This function is automatically disabled when you press the **Hang Up** key to end a conversation. However, if a call is hung up by the other party and you did not press the **Hang Up** key, the always link will not be disabled unless you press the **Hang Up** key.

When always link is active, the wireless phone will not enter standby mode and thus cause the phone to keep consuming the battery power. **Therefore, when you are not phoning, it is important that you disable the always link function.**

The always link indicator appears when you are not phoning...

Make sure to press the **Hang Up** key to disable the always link function to save your battery power.



If this icon appears when you are not phoning, make sure to press **Hang Up** to disable always link

Resetting the Wireless Phone

You will need to reset your wireless phone in case any of the following situations occur:

- The wireless phone hangs up.
- The LCD display responds slowly.

To reset your phone, insert a pin or paperclip into the **Reset** hole on the side. Press lightly and then release to power off the phone. Then power on the phone again by long-pressing the **Power** key.

About the Speaker and Microphone Volume

The wireless phone's speaker and microphone volume is not adjustable on Windows via **Control Panel > Sounds and Audio Devices**. The microphone volume is fixed and not adjustable. As for the speaker volume, it is only adjustable on the phone device:

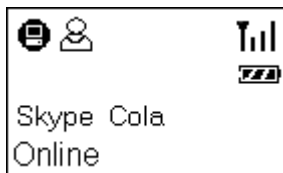
- During the conversation, press the **Vol Up** or **Vol Down** key on the side of the device to adjust the volume.
- Or, you can predefine the setting via **Menu > Options > Speaker Vol.**

5. Using the Phone with Skype

Calling a Skype User

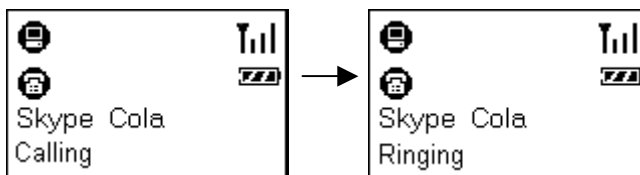
To call a Skype user, you have to launch Skype and log in to Skype. And you should have added desired Skype user(s) to your contact list. Then take the steps below to call a Skype user:

1. Press the **Contacts** hotkey to display the Skype contact list.
2. Scroll with **Up / Down** to reach the desired contact.

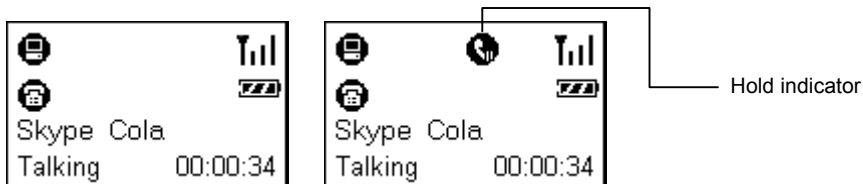


3. Once your target contact is displayed, press **Dial** to make the call.

The communication process is as follows. The connecting time depends on the network traffic. You will not hear the ringing tone until the connection is established.



4. Once the call is answered, the duration timer will display the time elapsed of the call in process. You can press **Hold** to hold the call if required.



5. To end the call, press the **Hang Up** key. The call duration timer will be shown briefly.

Initializing a Call from Host Computer

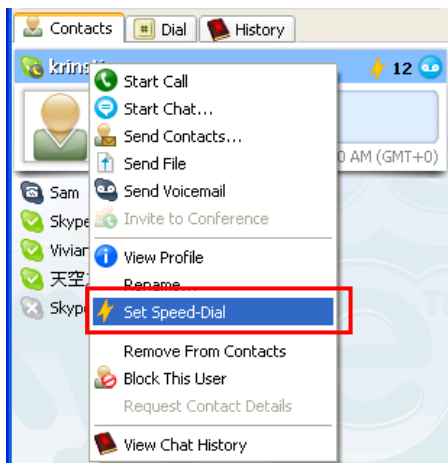
If your Skype contact list is long, you may want to spare the hassle of scrolling through the contact list. In such a case, you may initialize a call from Skype window on the host computer first and then communicate via the phone.

Note: When you use the **Skype** key to open Skype window and switch to the **Contacts** tab, if you want to use the **Up / Down** key to scroll through list, you should press the **Contacts** hotkey first.

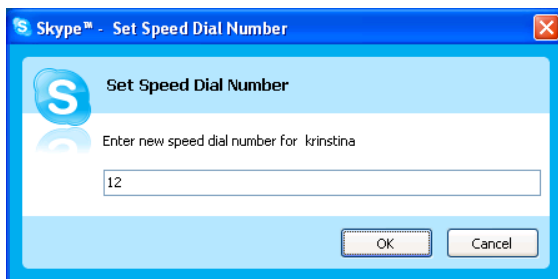
Speed Dialing

To use the speed dialing function, you should assign the speed dial number to your target contact via Skype window first.

1. In Skype window, go to the **Contacts** tab and select your desired contact. Right-click the contact and select **Set Speed-Dial**.



2. Assign a number as a speed dial number using your keyboard.



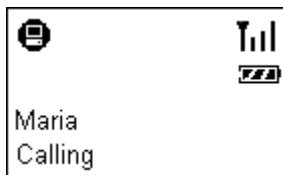
Once the speed dial number is assigned, just use the wireless phone's keypad to dial the number and then press **Dial** to make the call.

In case you want to clear the number you entered, press **CLS**. Each press will erase the last number. Or you can long press **CLS** to clear all the entered numbers at a time.

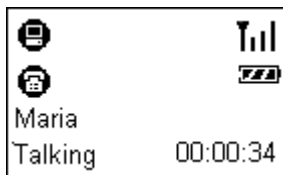


Answering a Call

On an incoming call, the wireless phone will be ringing and the LCD backlight will light on with the caller ID displayed (if available). Press the **Answer** key to answer the call.



Once you answer the call, the duration timer will display the time elapsed of the call in process. You can press **Hold** to hold the call if required. To end a call, press the **Hang Up** key.



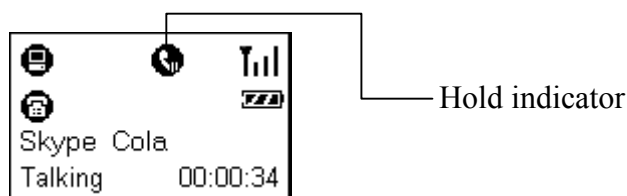
Ending / Rejecting a Call

To end or reject a call, press the **Hang Up** key.

Holding a Call

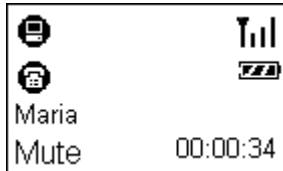
To place a call on hold, just press the **HOLD** key. Pressing the **HOLD** key again can resume the call.

When holding a call, if a second call is coming you will hear a knocking sound (which is configured via **Skype > Sound > Knocking**.) You can press **Answer** key to answer the call; but this will also terminate the first call.



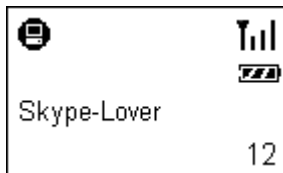
Muting

To mute the microphone during a call, press the **Mute** key on the side of the device. When mute is on, the message **Mute** is displayed on the screen. To turn mute off, just press the **Mute** key again.



Clearing the Entered Numbers

To erase the numbers you've just entered, press **CLS**. Each press will clear the last character. Or you can long press **CLS** to clear all the entered numbers at a time.

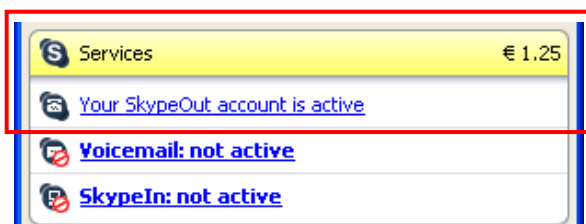


Using SkypeOut to Call Regular Phones

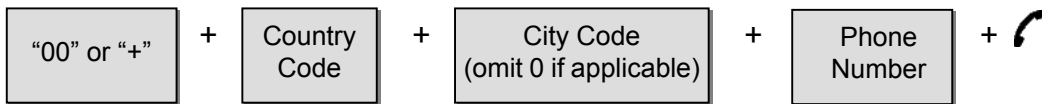
SkypeOut allows you to place calls to regular telephones or mobile phones. This feature allows you to call from Skype to friends who are not using computers but still use regular phones.

To use SkypeOut, you should buy SkypeOut credits first. To do this, click **Tools > Go to My Account Page**. Sign in and find the link to SkypeOut credits page. Then follow the instructions to purchase the credits.

After you have purchased SkypeOut credits, log out from the Skype web page. Open your Skype and check the **Services** section for verification that your SkypeOut account has been activated.



To make a SkypeOut call, you must enter the number in the following way (whether for domestic or international calls):



Example 1: Placing a USA domestic call 222-5551234.


00-1-222-5551234 or +1-222-5551234

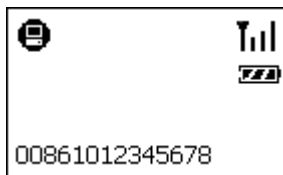
Example 2: Calling China (010-12345678) from USA.

00-86-10-12345678 or +86-10-12345678 (*Omit the preceding 0 from the local code)

Making a SkypeOut Call

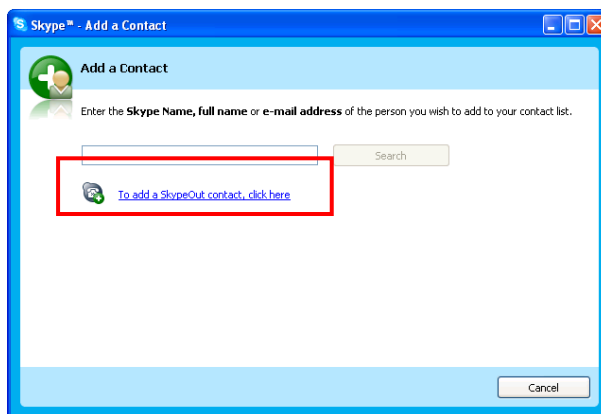
Using the Key Pad to Enter SkypeOut Number

Enter the SkypeOut number using the keypad and then press .

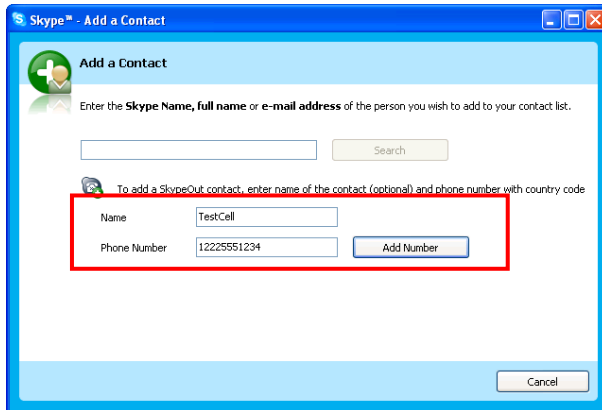


Adding a SkypeOut Number to Contact List

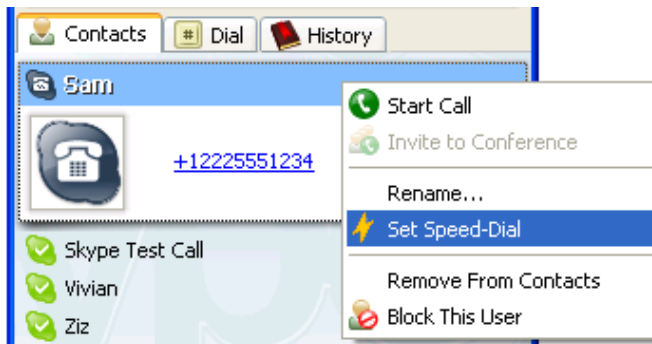
1. To add a SkypeOut number, click **Tools > Add a Contact**.
2. Click the item for adding a SkypeOut contact.



3. Type in a name or description for this phone number and enter the phone number. Then click **Add Number**. (No need to enter "+" or "00" before the actual number; Skype will automatically add it to make it SkypeOut compatible.)



After adding the SkypeOut number to your contacts list, you can also assign a speed-dial number to the contact.



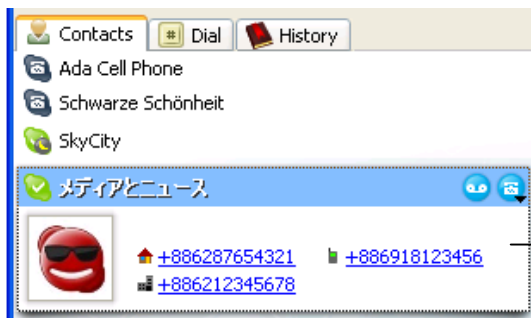
Once the SkypeOut number is saved as a contact, you can press the **Contacts** hotkey to display the Skype contact list. Then press **Dial** key to make the call.

Loading Phone Number via Contact Info

1. Press the **Contacts** hotkey to display the Skype contact list.
2. Scroll with **Up** / **Down** to reach the desired contact.
3. Press the **Info** key to enter the information menu.
4. Scroll with **Up** / **Down** to reach the required item, e.g. **Mobile Phone**, **Office Phone** or **Home Phone**.
5. Press **OK** key to display the number.
6. Press **Dial** to make the call.

“No Number” is displayed for Mobile Phone, Office Phone or Home Phone ?

The availability of **Mobile Phone**, **Office Phone** and **Home Phone** depends on whether your target contact provides these information in his/her profile settings, which is accessed via **File > Edit My Profile** in Skype. Your contact must provide these information in SkypeOut compatible format so that you can dial these numbers.



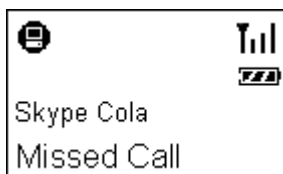
Highlight a Skype contact and you can see the personal info, if any, provided by the contact.

Fail to make a SkypeOut call?

The telephone number must be in SkypeOut compatible format otherwise you cannot successfully make the call.

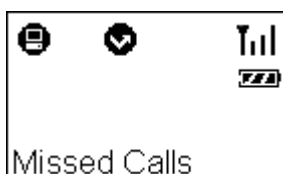
Missed Calls

In case you have a missed call, the LCD will display a notification of the latest missed call.



There may be more than one missed call on the phone. To view missed calls list:

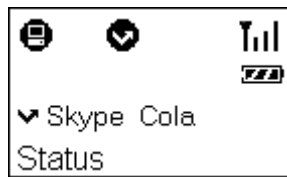
1. Press the **MENU** key and the use **Up / Down** to reach the **Missed Calls** menu. Press **OK** to access the list content.



2. The caller and time of each missed call will be displayed. At the missed calls screen, you can:



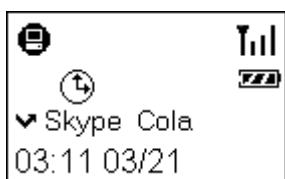
- Use **Up / Down** to scroll through the missed calls list.
- Press **Dial** to call the contact being displayed.
- Press **Info** to access the information menu for the contact being displayed.



Then you can use **Up / Down** to switch between **Status**, **Office Phone**, **Home Phone**, **Mobile Phone** and **Username** and then press **OK** to enter a desired item. If a SkypeOut compatible telephone number is provided, you can press **Dial** to make a SkypeOut call.

Loading Calls List

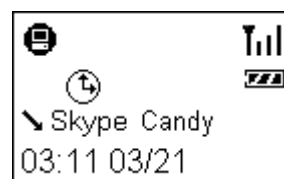
Pressing the **Calls List** hotkey allows you to load the calls list, which includes incoming, outgoing and missed calls. The calls are sorted in time order with the most recent at the start.



Missed Call



Outgoing Call



Incoming Call

At the calls list screen, you can:

- Use **Up / Down** to scroll through the calls list.
- Press **Dial** to call the contact being displayed.
- Press **Info** to access the information menu for the contact being displayed.



Then you can use **Up / Down** to switch between **Status**, **Office Phone**, **Home Phone**, **Mobile Phone** and **Username** and then press **OK** to enter a desired item. If a SkypeOut compatible telephone number is provided, you can press **Dial** to make a SkypeOut call.

Clearing Calls List

To clear the calls records, open the Skype window and click the **History** tab. Select the calls record you want to delete and press delete key to delete it.

Note: The wireless phone's calls list corresponds to that on the Skype window. If you clear the list entries on the Skype window, it will be also cleared from the wireless phone.

Skype Status and Response Mode

The wireless phone's respond mode varies according to your Skype status as described in the table below:

Skype Status	Phone Ringer	Phone LCD Backlight
Offline	No Ring	No
Online	Ring	Flash
Skype Me	Ring	Flash
Away	Ring	Flash
Not Available	Ring	Flash
Do Not Disturb	No Ring	Flash
Invisible	Ring	Flash

6. Using the LCD Setting Menu

The wireless phone comes with a setting menu allowing you to verify or modify the settings to adapt the phone to your requirements. Refer to the relevant sections for the descriptions.

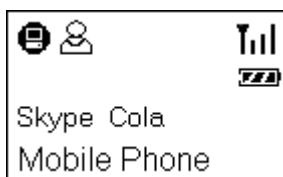
Viewing Information of Your Contact

This feature allows you to view the personal information of your contact, including mobile phone, username, office phone and home phone. These information are only available if your contact enter them via **File > Edit My Profile** in Skype.

If a telephone number is provided, you can even make a SkypeOut call providing you have SkypeOut credits.

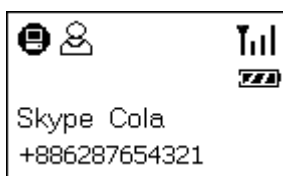
To view the information of a contact:

1. Press the **Contacts** hotkey to display the Skype contact list.
2. Scroll with **Up / Down** to reach the desired contact.
3. Press the **Info** key to enter the information menu.
4. Use **Up / Down** to scroll through the options: **Mobile Phone**, **Username**, **Office Phone** and **Home Phone**.



5. To view the setting, press **OK**.

If a telephone number is provided, you can also place a SkypeOut call by just pressing the **Dial** key providing you have valid SkypeOut credits.



6. To return to your main screen, just keep pressing **Back**

Using Options Menu to Adjust Phone Settings

The **Options** menu comes with a couple of wireless phone settings. You can modify these settings as required to adapt the phone to your personal requirements.

To use the **Options** menu:

1. Press the **MENU** key and then use **Up / Down** to reach the **Options** menu.

2. Press **OK** to enter the **Options** menu.



3. Use **Up / Down** to scroll through the menu.
Once the desired menu is reached, press **OK**.



4. Press **Up / Down** to change the setting.



5. Press **OK** to activate the setting.
The screen will return to previous menu.

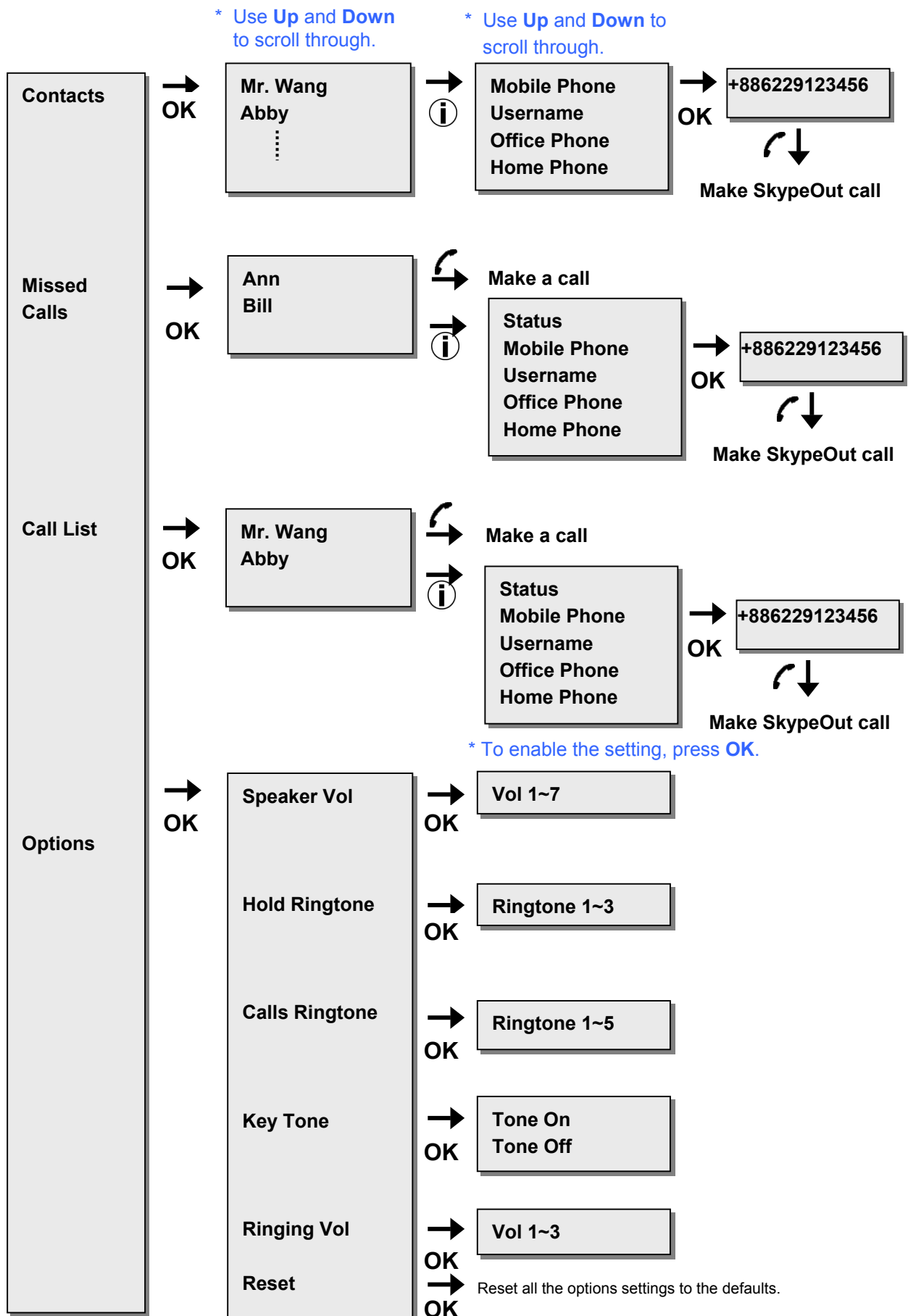


Note: You must press **OK** to activate the settings otherwise the settings will not be changed.

Available items under **Options** menu and the selectable choices for each item are given in the table below:

Option	Function	Available Settings
Speaker Vol	Adjusts speaker and keypad tone volume. Note: Pressing the Vol Up / Vol Down key on the side of the phone will override this setting.	Vol 1 ~ 7
Hold Ringtone	Selects holding ringtone. When you placing a call on hold, the phone will play the holding ringtone you specify here.	Ringtone 1-3
Calls Ringtone	Selects the ringtone to be played when you get a call.	Ringtone 1-5
Key Tone	Turns on/off the keypad tone.	Tone On Tone Off
Ringling Vol	Adjusts the volume of the ringtone.	Vol 1 ~ 3
Reset	Reset all the options settings to the defaults.	

Menu Navigation



7. Using with Instant Messenger Software

The wireless phone can be used as an audio device with instant message (IM) software, such as MSN Messenger and Yahoo Messenger. To do this, you should first configure the software to use the wireless phone as the audio device.

MSN Messenger

Select **Tools > Audio and Video setup** to open the **Audio and Video Setup** dialog box and then proceed as prompted. Make sure the audio and video devices are correctly configured as shown by the figure below.



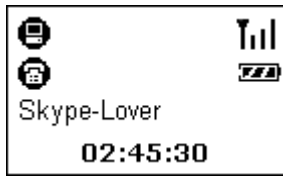
Yahoo Messenger

Select **Messenger > Preferences > Calling & Audio** and select **USB Audio Device** as the microphone and the speaker.

After the configuration:

1. Use the instant messenger to initiate the audio conversion on your computer side.
2. Press the **Dial (Always Link)** key and start your conversation via the wireless phone. When the conversation ends up, press the **Hang Up** key.

Important: After the conversation, make sure the press the **Hang Up** key to disable the always link function; otherwise the phone will keep consuming the battery power due to power-saving function is disabled.



8. Troubleshooting

Q1. When I try to operate the wireless phone, the LCD keeps showing "Linking".

A1. If the RF indicator disappears from the screen in working mode, it means the wireless connection cannot be made. Move your wireless phone closer to the dongle to see if the problem is solved.

If the RF indicator remains absent, verify if any of the following situations occurs:

- The dongle has been un-plugged or not properly plugged.
- Your computer enters standby or hibernation mode.

Q2. I've got noise and hiss on my phone conversation.

A2. There are a couple of reasons that might degrade the sound quality, such as distance, obstacle and network traffic. You may try to improve the sound quality by first moving closer to your host computer.

Also, a partition wall or window in your home or office may be obstacle to the RF signal. Keep away from possible obstacle and try move closer to the dongle.

If you intend to use more than one pair of wireless phone and transceiver dongle within a wireless radio range, try to increase the distance between the dongles.

Q3. The phone doesn't work at all.

A3. Check these items first:

- Make sure the battery is not running off.
- Make sure the dongle, SkyWin and Skype communicate well on the host computer.
- If the problem persists, reset the phone by inserting a paperclip into the **Reset** hole. Press lightly and then release to power off the phone. Then re-power on the phone by long-pressing the **Power** key.

Q4. While using the wireless phone:

- There is no dial tone after pressing the dial key.
- I cannot hear the other party on my wireless phone.
- I hear the other party on my PC's sound card (or another USB speaker) instead of the wireless phone.
- The other party cannot hear me.

A4. Make sure your software is configured to use wireless phone as the audio in/out device.

In Skype window, click **Tools > Options > Sound Devices**. Make sure the **Audio In** (microphone) and **Audio Out** (speaker) and are correctly configured to use **USB Audio Device**, i.e. the wireless phone.

Q5. When the phone's USB port is connected to a computer for charging purpose, can I unplug the dongle and allow the phone to directly communicate with the host computer?

A5. No. The phone's USB port is only for power charging but not for data transfer. It always needs a USB dongle as a data transceiver.

Q6 Will the Wi-Fi devices interference with the phone?

A6. Although the wireless phone shares 2.4 GHz frequency band with Wi-Fi devices (such as the popular IEEE 802.11x wireless network device in office use), the phone has implemented Adaptive frequency hopping (AFH) solution to mitigate radio interference so that the phone can co-exist with Wi-Fi devices without degrading the wireless performance.

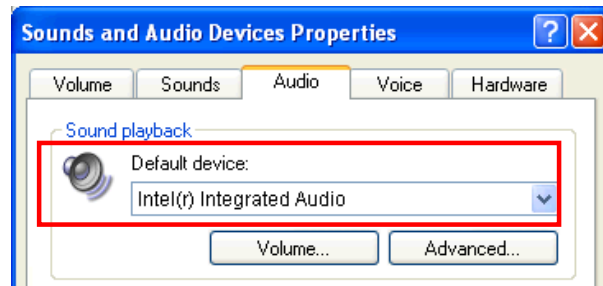
Q7. Why cannot my contact's name correctly displayed? The name is in one of the supported languages of the phone.

A7. Make sure the language is correctly displayed in Skype, If not, you need to install related language on your system. (Refer to Windows Online help for more information.)

Q8. While using the wireless phone to make/answer a call in Skype, can I still play music by my PC's sound card or USB speaker?

A8. Yes. Just set your sound card or preferred audio device as the playback device in Windows.

1. Under **Control Panel**, double-click the **Sounds and Audio Devices** (or **Sounds and Multimedia**) icon and then click the **Audio** tab.
2. Select the sound card or preferred audio device as the sound playback device.



- Q9. I try to adjust the phone's speaker/microphone volume value using Windows **Sounds and Audio Devices Properties** window but cannot move the slider.
- A9. The phone's speaker/microphone volume is designed not to be adjusted via Windows. You can only adjust the speaker volume using the phone's option menu (**Options > Speaker Vol.**).

9. Specifications

RF	Wireless Interface	2.4GHz Radio Frequency Technology
	Dongle Interface	USB 1.1 (A type male connector)
	Operating Range	Indoor: > 15 meters, Outdoor: > 30 meters (in an open environment)
	Transmitter power	+17 dBm
	RSSI	-35 to -80 dBm
	RF Out Power	50 mW
	Operating Channels	Supports frequency hopping on 79 channels
	Features	<ul style="list-style-type: none"> • Up to seven simultaneous connections within effective range • RF interface baud rate 1Mbps transmit & receive • Adaptive Frequency Hopping (AFH), support for Bluetooth + Wi-Fi co-existence
Voice	<ul style="list-style-type: none"> • Full duplex • Toll quality (8KHz, 16bit voice) • CVSD encode/decode for voice bits stream passing through host 	
Battery	Power Source	One 850 mAh Li-Polymer rechargeable battery
	Operating Voltage:	DC 5V (Bus-Powered)
	Battery Life	Standby Mode: 60 hours Continuous use: 6 hours
	Power Saving	Enters standby mode after 20 secs of inactivity
	Charging Method	USB bus power, USB 1.1 Mini B type connector.

Phone Controls	<ul style="list-style-type: none"> • Volume Up, Volume Down, Hold, Mute • Switch on/off • Control interaction with Skype AP • Numerical keys • Telephone control-like keys 	
LCD Screen	Resolution	128 x 32 pixels
	Size	31 X 19 mm
	Backlight	Blue
	Display Mode	FSTN, POSITIVE, TRANSFULECTIVE
	Language Support	English, French, German, Italian, Spanish, Portuguese, Polish, Swedish, Dutch, Finnish, Norwegian, Traditional Chinese, Japanese
Speaker	Size	Size: 13 mm
	Response Frequency:	300 ~ 3.4K Hz
	Output Impedance:	150 ohm
	Signal-To-Noise Ratio	90 dB
Microphone	Sensitivity	- 40 +/- 2 dB
	Directivity	Onmidirectional
	Response Frequency	20 ~ 20K Hz
Selectable Settings	Speaker Volume, Holding sound, Ringtone, Key Tone, Ringing Volume	
Temperature	Operating: 0~40 °C	
	Storage: -20~60 °C	
Humidity (Non-Condensing)	Operating: < 90%	
	Storage: < 95%	

*Specifications are subject to change without notice.

10. Regulatory Compliance

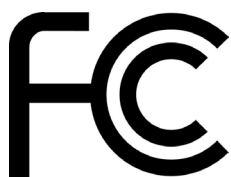
CE

This equipment is in compliance with the requirements of the following regulations:
EN 55 022: CLASS B

WEEE Information

For EU (European Union) member users:

According to the WEEE (Waste electrical and electronic equipment) Directive, do not dispose of this product as household waste or commercial waste. Waste electrical and electronic equipment should be appropriately collected and recycled as required by practices established for your country. For information on recycling of this product, please contact your local authorities, your household waste disposal service or the shop where you purchased the product.



Warning

This equipment has been tested and found to comply with the limits for a Class B digital device, pursuant to part 15 of the FCC rules. These limits are designed to provide reasonable protection against harmful interference in a residential installation. This equipment generates, uses and can radiate radio frequency energy and, if not installed and used in accordance with the instructions, may cause harmful interference to radio communications. However, there is no guarantee that interference will not occur in a particular installation. If this equipment does cause harmful interference to radio or television reception, which can be determined by turning the equipment off and on, the user is encouraged to try to correct the interference by one or more of the following measures:

- Reorient or relocate the receiving antenna.
- Increase the separation between the equipment and receiver.
- Connect the equipment into an outlet on a circuit different from that to which the receiver is connected.
- Consult the dealer or an experienced radio/TV technician for help.

This device complies with Part 15 of the FCC Rules. Operation is subject to the following two conditions:

- (1) This device may not cause harmful interference.
- (2) This device must accept any interference received, including interference that may cause undesired operation.

Any changes or modifications (including the antennas) made to this device that are not expressly approved by the manufacturer may void the user's authority to operate the equipment.

FCC RF Radiation Exposure Statement: This equipment complies with FCC RF radiation exposure limits set forth for an uncontrolled environment. This device and its antenna must not be co-located or operating in conjunction with any other antenna or transmitter.