

wifi video doorbell

USER MANUAL



Model: G14025

Please read this user manual carefully before using this product. Failure to understand operation procedures may result in injury.

EU Environmental Protection
Waste electrical products should not be disposed of with household waste. Please recycle where facilities exist. Check with your local authority or retailer for recycling advice.



Welcome

Thank you for purchasing our products. The product is a high-quality finepositioning digital monitoring product designed and developed for the security and protection field. Please read the instruction of product carefully before use.

Precautions

1. It is recommended that the equipment be paired in the room first;
2. Do not place in a place where you can drop or where you can easily splash it;
3. When not in use for a long period of time, turn off the power switch of the camera / relay station;
4. This product only unplug the charger, in order to completely disconnect the power;
5. Do not touch the power switch and receiver with wet hands or damp items to avoid electric shock.
6. Have solid or liquid into the product, please immediately disconnect the machine, and please qualified technical staff Check before restarting;
7. If the description of the product or parameters in the instruction is inconsistent with the material object, please in kind prevail. We reserve all the right for the final explanation.

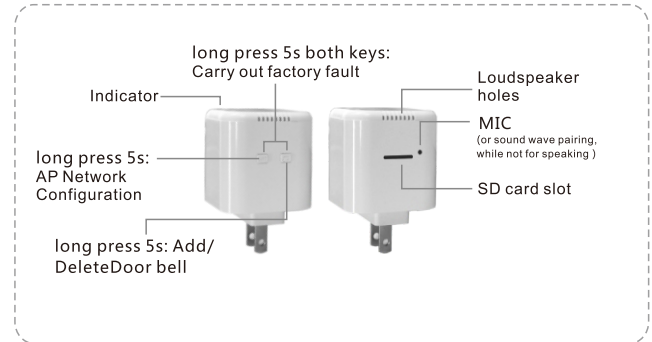
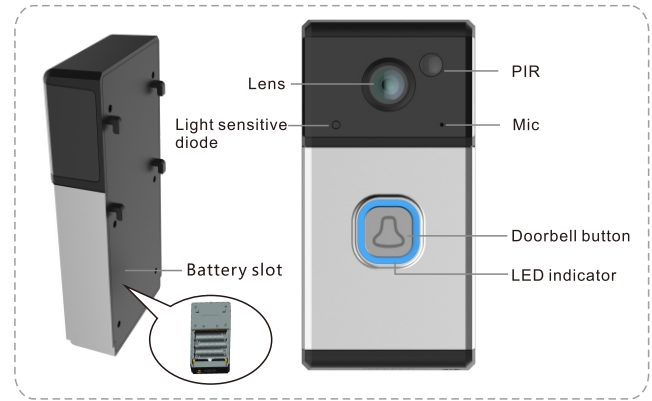
Features:

- Total wireless. No need wire and plug & play. Use AA battery for power supply. 4-6 month Long time working time.
- Smart Relay Station, The Relay station MAX support 32GB Micro SD card. No need expensive cloud storage. Within integrated power adapter. Delicate and convenient. Extend the transmission distance and make sure the connection more stable. The relay station will ring when visitor ring the doorbell.
- PIR sensor, Use High sensitivity PIR sensor. Can avoid mistake alarm. The Relay Station will record when PIR detect people. And APP will push notification.
- 720P 25fps smooth video. Clear night vision function. Perfect sight version and friendly usage experience.
- Two way audio. Crystal-clear voice. Easy to communicate with visitor.

Suggest:

In order to ensure the battery life, it is recommended to use high-quality rechargeable battery to avoid the frequent real-time video viewing, and turn off the motion detection when installed in the areas where with heavy traffic.

Structural Diagram

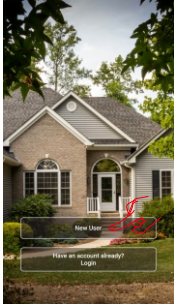


Android APP Installation and Register

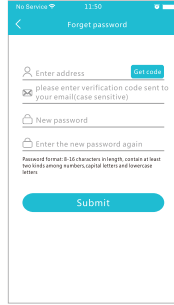
Step 1: Download "  " from Google Play Store and install it;

Step 2: Tap the icon "  " to open the APP;

Step 3: Tap the "New User"(figure 1) to complete user registration by an email address(figure 2).



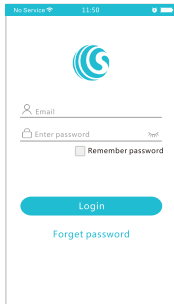
(1)



(2)

Device Pairing

1. Input username and password, and click "Login"(figure 3)



(3)

2. Power on the doorbell and wifi station(there will be voice " please use AP Mode to connect ", after 60s plug wifi station to outlet, LED indicators start blinking, means wifi station power on successfully).

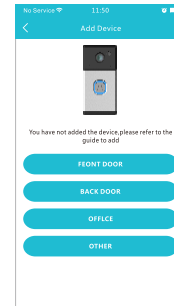


(4)

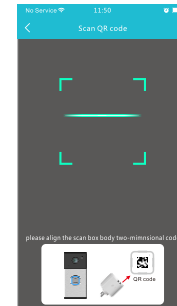


(5)

3. Choose doorbell name(Or customise name by choosing "OTHER")(figure 6), would switch to the Scanning Page, please align the scanning window to device ID QR code for scanning (figure 7).



(6)



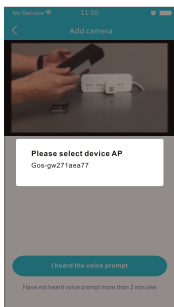
(7)

4. Click "I heard the voice" after the WiFi station makes the voice "please use AP Mode to connect", and the LED indicator blinks Red-Blue colors (figure 9).



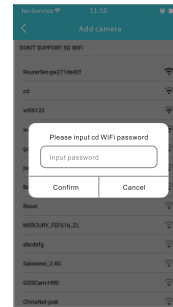
(9)

5. Please select device AP



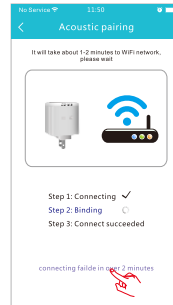
(10)

6. Choose the WiFi that the device will connect to (not WiFi station hotspot), input the WiFi password, click "confirm" (figure 11).

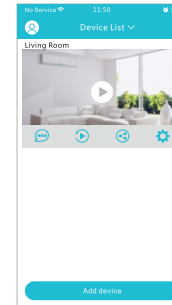


(11)

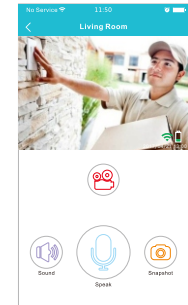
7. WiFi station starts connecting to WiFi internet (figure 12) after clicking "confirmation". And then the APP will automatically switch to the device list (figure 13), click this device to enter real-time view (figure 14).



(12)




(13)



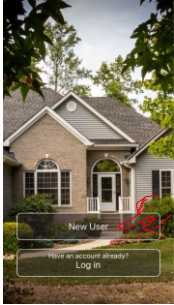
(14)

IOS APP Installation and Register

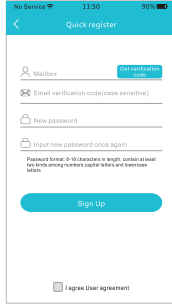
Step 1: Download "  " from App Store and install it;

Step 2: Tap the icon "  " to open the APP;

Step 3: Tap the "New User"(figure 1) to complete user registration by an email address(figure 2).



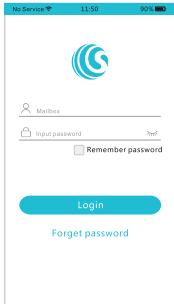
(1)



(2)

Device Pairing

1.Input username and password, and click "Login"(figure 3)



(3)

2.Power on the doorbell and wifi station(there will be voice " please use AP Mode to connect " , after 60s plug wifi station to outlet, LED indicators start blinking, means wifi station power on successfully)

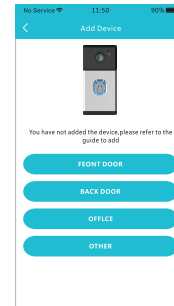


(4)

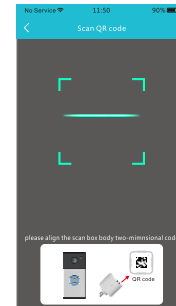


(5)

3.Choose doorbell name(Or customise name by choosing "OTHER")(figure 6) , would switch to the Scanning Page, please align the scanning window to device ID QR code for scanning (figure 7).



(6)



(7)

4. Click " I heard the voice " once wifi station makes voice "please use AP Mode to connect", and LED indicator bling Red-Blue colors (figure 8).



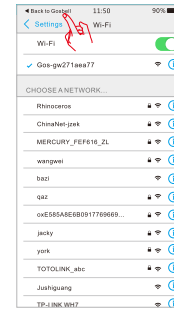
(8)

5. Please read carefully WiFi configuration steps and then click "Next"(figure 9).

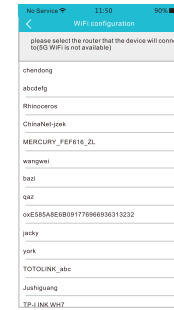


(9)

6. Choose hotspot of WiFi station, click "Back to GosBell" to get back to APP interface after connection succeed.

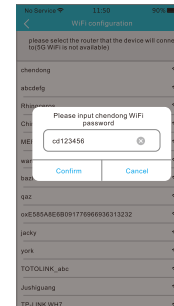


(10)

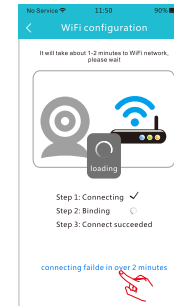


(11)

7. Choose the WiFi that device will connect to (not wifi station hotspot), input wifi password (figure 12), then device will automatically connects to wifi router (figure 13).

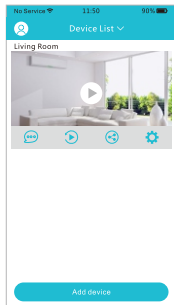


(12)

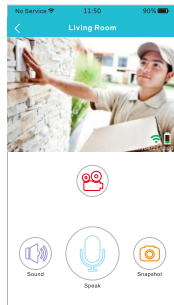


(13)

8.APP will automatically switch to device list (figure 14) after connection succeed, click this device added to enter real time view (figure 15)



(14)



(15)

Device Installation

Step 1: Place doorbell board on the door and use pencil to draw the position for each screw (Figure 1)

Step 2: Dig the hole onto the screw position (Figure 2)

Step 3: Insert the wall plug into the hole (Figure 3)

Step 4: Put the doorbell board into position accordingly and screw it (Figure 4)

Step 5: Put the doorbell to the board and screw it to the board on the bottom (Figure 5)



(1)



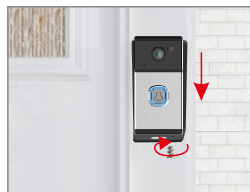
(2)



(3)

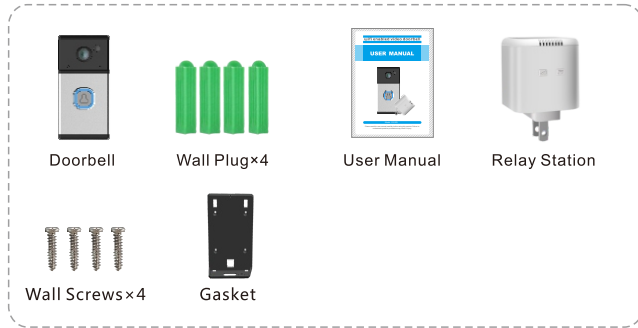


(4)



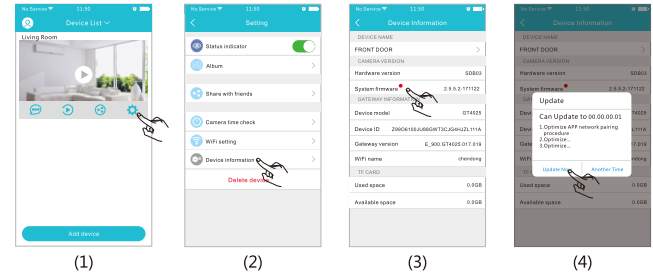
(5)

Packing List



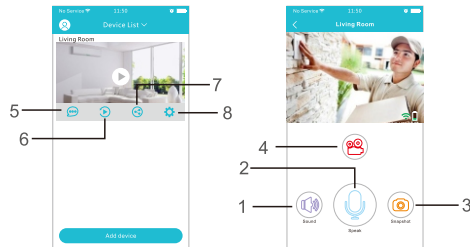
Software Upgrade

1. Click "Settings" icon (Figure 1) → Click "Device Information" (Figure 2) → Click "System Firmware" (Figure 3) → Click "Update Now" (Figure 4) (It can only be upgraded if there is a small red spot on the top right corner of the application firmware)



View Monitoring and Operate

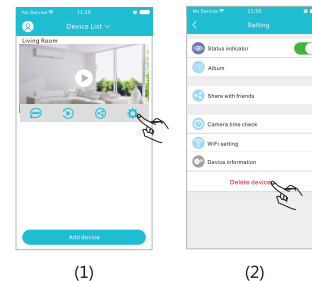
After the device is connected, you can view real-time monitoring, and take a picture, record a video, speak, set up and make other operations on your mobile phone.



1. Voice button: Click to close/disclose the voice
2. Talkback button: press and hold this button to talk with the camera.
3. Capture button: click to fast capture (save in the settings directory Album Book option).
4. Record button: Click to start recording, click the button again (stored in the set the directory of the album option).
5. Notification push key: Press to check the pushed notification.
6. Playback key: Press to enter playback list, can check photo and video saved in SD card.
7. Sharing key: press to create two-dimension code for sharing with friends
8. Setting key: Press to set functions of the device

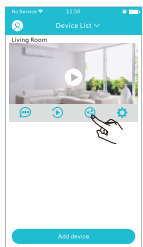
Device Unbinding

1. Click "Settings" icon (Figure 1) → Click "Delete Device" (Figure 2) APP will automatically switch to camera list, delete the camera you want to Unbundled it from the APP



Add Friends to Share

1. Please click the Share button of the device in the list, then it will generate a sharing QR code

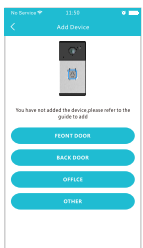


(1)

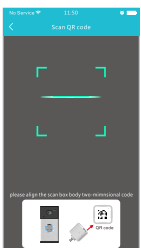


(2)

2. Choose any device name to switch to scanning mode page, and scan the QR code shared by friend to add the device to list.



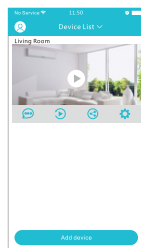
(4)



(5)



(6)




(7)

Visitor:



When a visitor appears in the doorbell PIR sensing area, the doorbell will quickly start the video recording function and send a notification to the mobile APP, while the button will light up to remind the visitor to press the doorbell. The indoor Base Station will have a ringtone reminder, and then the mobile phone receives a visitor request. The user can choose whether to have a video call with the visitor.

Common Network Troubleshooting Methods



Mobile APP fail to connect WiFi Station

Check if network lost. Long press wifi station button  5 seconds till you hear the audio indication to read the doorbell

Camera in offline status or indicates no camera added

Camera in offline status or indicates no camera added. Check if doorbell power off. Long press station button  5 second when doorbell is power operated, when you hear the audio indications, long press button "" till LED blinks Red-Blue, and wait for 10 seconds

Device failed to work properly (Carry out factory reset)

Long press buttons  and  simultaneously until you hear a prompt of "Carry out factory reset".

After doorbell release, configuration mode can not startup

Long press wifi station key  about 5 seconds till voice prompts and LED indicator start blinking Red-Blue color, and then to add the devices.

Specifications

Items	Door Bell(T5100HAA)
Image Sensor	1/4" CMOS
Horizontal viewing angle	100±5°
Resolution	1280×720
Audio	Two-way audio
OS	Android/ios
Detection range	<5m
Share	Share by QR Code
Power voltage	AA×4(4~6V)
Waterproof grade	IP53
Operation Temperature	0~50°C
Storage Temperature	-20~+60°C
Operation Humidity	15%~85%RH
Size	132.5×65.5×32.5MM
Weight	158g

Items	Station(GT4025)
Operating environment	Indoor only
Microphone input	-42db (Wave pairing only)
Speaker output	8Ω 1W
WiFi distance	100m in the open
OS	Android/iOS
Record storage	TF MAX 32GB
Share	Share by QR Code
Power voltage	AC 100~240V
Operation Temperature	0~50°C
Storage Temperature	-20~+60°C
Operation Humidity	15%~85%RH
Size	44×44×44mm
Weight	55g

※ All parameters are subject to change without notice and the company reserves all rights for final explanation.

FCC Certification Information

NOTE: This equipment has been tested and found to comply with the limits for a Class B digital device, pursuant to part 15 of the FCC Rules. These limits are designed to provide reasonable protection against harmful interference in a residential installation.

This equipment generates uses and can radiate radio frequency energy and, if not installed and used in accordance with the instructions, may cause harmful interference to radio communications. However, there is no guarantee that interference will not occur in a particular installation. If this equipment does cause harmful interference to radio or television reception, which can be determined by turning the equipment off and on, the user is encouraged to try to correct the interference by one or more of the following measures:

- Reorient or relocate the receiving antenna.
 - Increase the separation between the equipment and receiver.
 - Connect the equipment into an outlet on a circuit different from that to which the receiver is connected.
 - Consult the dealer or an experienced radio/TV technician for help
- Changes or modifications not expressly approved by the party responsible for compliance could void the user's authority to operate the equipment. This device complies with Part 15 of the FCC Rules. Operation is subject to the following two conditions:
- (1) this device may not cause harmful interference, and
 - (2) this device must accept any interference received, including interference that may cause undesired operation.

The Maximum Permissible Exposure (MPE) level has been calculated based on a distance of d=20 cm between the device and the human body. To maintain compliance with RF exposure requirement, use product that maintain a 20cm distance between the device and human body. Hereby, we declares that this device is in compliance with the essential requirements and other relevant provisions of Directive 2014/53/EU.

Notice: Observe the national local regulations in the location where the device is to be used. This device may be restricted for use in some or all member states of the European Union (EU)

The operated frequency is 2.4G~2.4835G with B/G/N20/N40.

The Max output power on 802.11b is 16.96dBm.

The Max output power on 802.11g is 14.98dBm.

The Max output power on 802.11n-20 is 15.12dBm.

The Max output power on 802.11n-40 is 14.67dBm

EU Environmental Provisions

E-waste cannot be mixed with household garbage; corresponding local government sector or recycling stations shall be responsible for circular process.

