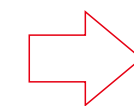


Folding Schematic
折叠示意图

Front side
正面



GOSCAM 深圳市高斯贝尔家居智能电子有限公司				技术要求	
绘图: 2016-12-06	零件名称: 英文说明书	物料编号:		折叠后成品尺寸: 80*110mm 展开尺寸: 640*110mm 材质: 105g铜版纸 颜色: 4色正反两面印刷 公差: +/-1mm 16P	
审核:	机种名称: T5880	比例: 电子档1:1			
批准:	客户名称: 中性	版本: 1.0			
变更履历	新版本	变更时间	变更前	变更后	
	说明:				

HD WiFi Camera

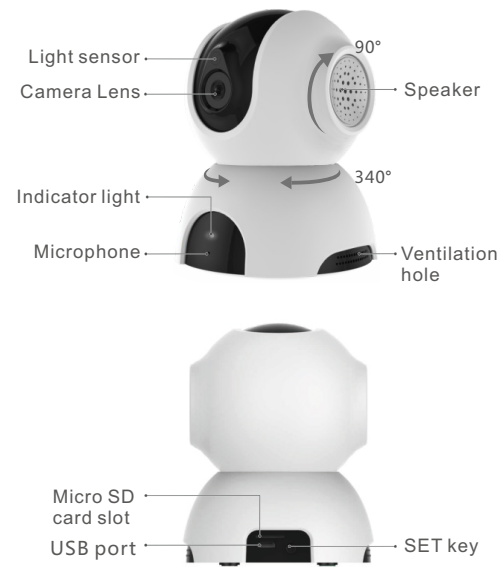


Quick Start Guide

Model: T5880Y/T5881

Version No.: 1.0
Before using the product, please read the guide carefully to avoid any damages to the product in virtue of faulty operation or misuse.

I Appearance



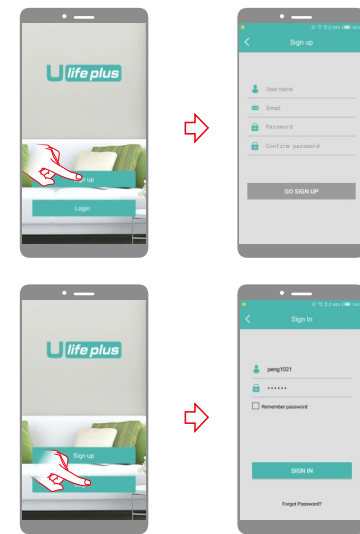
-1-

II Installation

- Pre-Installation Preparation**
- Requirements of version: Android 4.4, iOS 8.0, and later versions.
 - 2.4G wireless router should connect to the Internet; smartphone should connect the Wi-Fi of the router. When connecting to the camera, both the smartphone and camera should be within the range of this wireless router.
 - Download and install client-end APP
- A. Open the App Store on iPhone/iPad, search for "U-life Plus" and install. Or scan the QR code to install it directly.**
-
- B. Enter the "Google Play" store on Android smartphone. Search for "U-life Plus" and install. Or scan the QR code to install it directly.**
-
- ※ Take the operation of Android client-end as example, and refer to Android client-end for IOS client-end.

-2-

- Open APP, register an ID first, then please login. (special characters (such as "%", "\", "<>") etc...) are not allowed.)



-3-

Prompt: please use a valid and useable mailbox during user registration, for recovering the password.

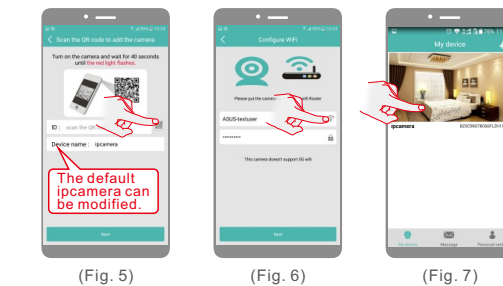
There are two ways to add the camera function in Mobile APP, namely, "adding mode by WiFi" and "adding mode by scanning the QR code".

- Adding mode by WiFi**
- Please connect the camera to power and switch it on; after switching on, its indicator light will be turned on and the camera will start auto-check. After finishing the auto-check, there will be "ding-dong" sound ringing. (Fig. 1)
 - Press SET for 1 second, and after a "beep" sound, the machine will enter configuration mode. (Fig. 2)
-
-

- Click + to add equipment; (Fig. 3)
 - Click "WiFi adding". (Fig. 4)
-
-

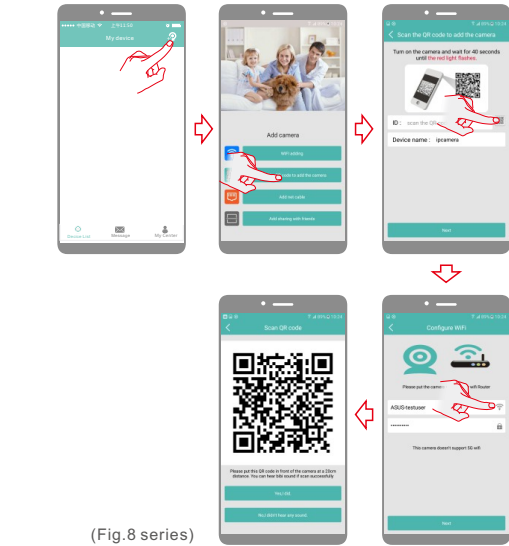
-4-

- Click the QR code icon and scan the QR code of the camera ID on the camera. The default name of the camera is "ipcamera" and can be modified. Finally, click "Next". (Fig. 5)
- Please click the icon to choose the name of your phone router, type in the right WiFi password, then click "Next". (Fig. 6)
- After two beeps, camera starts to configure the Wi-Fi connection. When the light turns green, it indicates the connection is established. After successful connection, the app will pop up list of connected cameras (Fig. 7). Choose the item to enter real-time monitor.



-5-

- Adding mode by scanning the QR code**
- Power camera on > Press SET for 1 second > Click Add by scanning the QR code to add the camera > Scan device ID > Enter the name and password for access to WiFi. Perform operations as instructed. (Figure 8 series)



-6-

- Point camera to the two-dimension code page on cell phone at a distance of about 15-20cm (as shown in Figure 9). If it beeps, scanning succeeds, and then click on I heard it to finish device binding operations.



(Fig. 9)

- Delete device**
- In setting page of app (Fig. 10), click "Delete device" to remove the connected camera, can remove the bonding with the account, then others can add the camera freely.

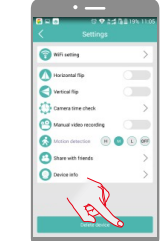
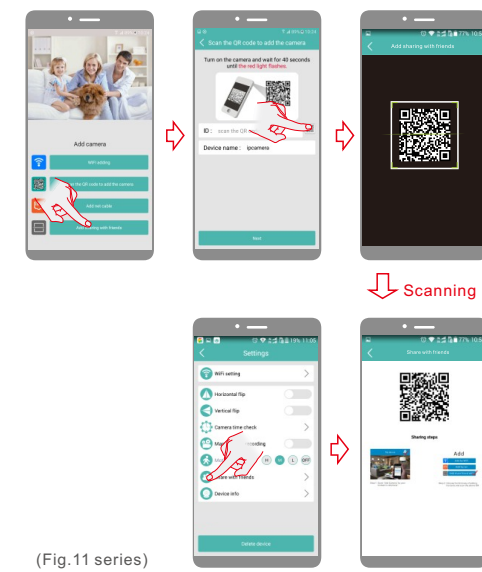


Fig. 10

-7-

Add camera for multi-users.

- If your cell phone APP has added camera and connected successfully, next time when others adds, he/she needs to click "Add sharing with friends" to scan the QR code you provided. (Fig. 11 series)

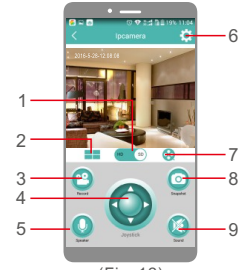


(Fig. 11 series)

-8-

III Monitor View and Operations

With a successful connection, monitor view supports real-time monitoring, taking photos, recording videos, intercommunication, modifying setting and other operations.



(Fig. 12)

- Click to switch between standard definition and high definition of real-time video.
- Click to enter multi-video view, monitor at most 4 real-time video.
- Click to start recording video, click again to stop recording. Video will be saved in smartphone.
- Drag to adjust camera view angle.
- Click and hold the button to transmit voice to camera. While holding the button, the audio from camera will be mute.
- Click to enter setting
- Click to view and download photos & videos saved in camera micro-SD card.
- Click to take a photo. Photo will be saved in smartphone.

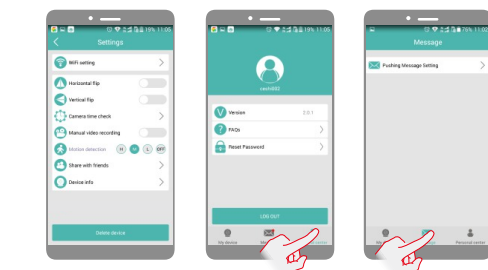
-9-

- Click to mute the audio from camera. Click again to cancel.

Notes:
1. Photos and videos taken in the app will be saved in smartphone.
2. Automatic photos and videos of movement detection will be saved in micro-SD card of camera.

Settings

- On the real-time monitoring interface, click the setting icon for entering into the camera setting menu. The user can set up the relevant functions for the "Camera time check" and others. (Fig. 13)
- Open the app, enter "personal center" page to check app version info etc. (Fig. 14)
- Open the map, enter "message" page to set message pushing. (Fig. 15)



(Fig. 13)

(Fig. 14)

(Fig. 15)

※ This camera is compatible with universal app, actual function is subject to camera.

-10-

IV Camera Indicator Instruction

Red indicator remains	Indicates that power failure or network not connected.
Red indicator flashes	Indicates that camera is connecting to network.
Green indicator flashes	Indicates that network connected successfully (no Internet).
Green indicator remains	Indicates the camera is connected to server and working well.

V Technical Parameters

	CMOS
Image sensor	CMOS
Camera resolution	1280x720 1280x960 1920x1080
Rotation angle	340°horizontal, 90°vertical
Night vision range	< 5m
Operation voltage	DC+5V/2A
Operation temperature	-10°C ~ +50°C
Operation humidity	15% ~ 85% RH
Size (LxWxH)	80x80x106mm
Net weight	245g

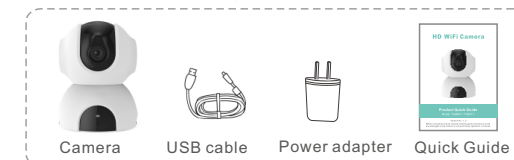
※ No additional notice will be made in case of any minor change. Our company reserves the right of final interpretation.

-11-

VI Function Features

- 24/7 live video streaming.
 - High resolution provides excellent picture quality.
 - Smart motion alerts on your phone so you know if anything happens.
 - Advanced video recording on the micro SD card. (Maximally support the cyclic recording of 32GB micro SD card.)
 - Motorized Pan/Tilt.
 - Night vision up to 5 meters.
 - Talk & Listen. See your dog on the couch and tell him to get off.
 - Quick, easy setup.
- Suggest using qualified micro-SD card to avoid incompatibility. Format micro-SD card before using.
 - Movement detection: when movement is detected within the scope of camera, the camera will record video and take photos automatically. Videos and photos will be saved in micro-SD card.
 - Sharing with Friends: Share two-dimension code of the device with your friends.
 - Cancel sharing with friends: Delete the camera and cancel sharing with friends. (You have to re-add the camera to use it again)
 - Push message: when movement is detected, alarm message can be sent to server and pushed to your phone.
 - Remote monitoring: after the camera is connected to Internet successfully, app can view the monitor via Internet, anytime, anywhere.
 - Special characters are accessible only under English mode, and other punctuation mark used in other language inconsistent with that under English mode cannot be input. Available special characters include "#, @, #, &, *, ~, () , ., -, =, +, /, ?, (), " and unavailable special characters include "%", "\", "<>".
 - When this machine has a crash fault or other abnormal conditions influencing the usage, it is recommended to cut out the power and restart; or press SET key for 5 seconds, which can restore factory settings, and then please reconnect the router.

VII Packing List



※ The picture is only for reference and the real object shall prevail

-12-

VIII Tips

- Suggest using qualified micro-SD card to avoid incompatibility. Format micro-SD card before using.
- Movement detection: when movement is detected within the scope of camera, the camera will record video and take photos automatically. Videos and photos will be saved in micro-SD card.
- Sharing with Friends: Share two-dimension code of the device with your friends.
- Cancel sharing with friends: Delete the camera and cancel sharing with friends. (You have to re-add the camera to use it again)
- Push message: when movement is detected, alarm message can be sent to server and pushed to your phone.
- Remote monitoring: after the camera is connected to Internet successfully, app can view the monitor via Internet, anytime, anywhere.
- Special characters are accessible only under English mode, and other punctuation mark used in other language inconsistent with that under English mode cannot be input. Available special characters include "#, @, #, &, *, ~, () , ., -, =, +, /, ?, (), " and unavailable special characters include "%", "\", "<>".
- When this machine has a crash fault or other abnormal conditions influencing the usage, it is recommended to cut out the power and restart; or press SET key for 5 seconds, which can restore factory settings, and then please reconnect the router.

-13-

IX Troubleshooting

- Wi-Fi cannot be connected
 - Ensure that the antenna of camera is fixed well.
 - Ensure that camera is in range of router. Keep the distance less than 40fts between router and indoor camera, less than 65fts for outdoor camera.
 - Ensure that SSID and password of Wi-Fi contains no special characters. Modify the SSID and password of Wi-Fi with only English characters, no special characters.
 - Ensure that SSID and password are no longer than 16 characters
 - Ensure that Wi-Fi signal is 2.4GHz.
 - Ensure that there is no MAC filter on router or add MAC address to router whitelist
 - We suggest rebooting the router, and the "security settings; encryption method" of WiFi password should never choose "auto-select"
 - Reset the camera to set up connection again. Press and hold SET key for 5 seconds.
- Red indicator remains, network connection is failed.
 - Ensure that the password of Wi-Fi is correct.
 - Ensure that the network connects to Internet freely.
 - Ensure that the camera is in range of Wi-Fi hotspot.
- Green indicator flashes, connection to server failed.
 - Ensure that Wi-Fi signal is strong enough and bandwidth is enough for connection. Move near to Wi-Fi hotspot or increase the bandwidth.
 - Ensure that camera is not under interferon of other 2.4GHz signal.

-14-

X FCC/CE Certification Information

NOTE: This equipment has been tested and found to comply with the limits for a Class B digital device, pursuant to part 15 of the FCC Rules. These limits are designed to provide reasonable protection against harmful interference in a residential installation. This equipment generates uses and can radiate radio frequency energy and, if not installed and used in accordance with the instructions, may cause harmful interference to radio communications. However, there is no guarantee that interference will not occur in a particular installation. If this equipment does cause harmful interference to radio or television reception, which can be determined by turning the equipment off and on, the user is encouraged to try to correct the interference by one or more of the following measures:

- Reorient or relocate the receiving antenna.
 - Increase the separation between the equipment and receiver.
 - Connect the equipment into an outlet on a circuit different from that to which the receiver is connected.
 - Consult the dealer or an experienced radio/TV technician for help
- Changes or modifications not expressly approved by the party responsible for compliance could void the user's authority to operate the equipment.
- This device complies with Part 15 of the FCC Rules. Operation is subject to the following two conditions:
(1) this device may not cause harmful interference, and
(2) this device must accept any interference received, including interference that may cause undesired operation.
- The Maximum Permissible Exposure (MPE) level has been calculated based on a distance of d=20 cm between the device and the human body. To maintain compliance with RF exposure requirement, use product that maintain a 20cm distance between the device and human body. Hereby, we declares that this device is in compliance with the essential requirements and other relevant provisions of Directive 2014/53/EN. Notice: Observe the national local regulations in the location where the device is to be used. This device may be restricted for use in some or all member states of the European Union (EU)

EU Environmental Provisions
E-waste cannot be mixed with household garbage; corresponding local government sector or recycling stations shall be responsible for circular process.