

## HD Outdoor WiFi Camera



Model:T5925HCA/T5925GCA

Before using the product, please read the guide carefully to avoid any damages to the product in virtue of faulty operation or misuse.

## I Appearance



Water proof cap (The Internet cable run through this cap, then stick to the Internet cable port. When fixed, the cap is water proof.)

## II Installation

### Pre-Installation Preparation

- 1.Camera can be connected to Mobile APP in three modes, namely: WiFi Add, QR Scan Add and Wired Add.
2. Requirements of version: Android 4.4, iOS 8.0, and later versions.
3. 2.4G wireless router should connect to the Internet; smartphone should connect the Wi-Fi of the router. When connecting to the camera, both the smartphone and camera should be within the range of this wireless router.
4. Download and install client-end APP

A. Open the App Store on iPhone/iPad, search for "U-life Plus" and install. Or scan the QR code to install it directly.

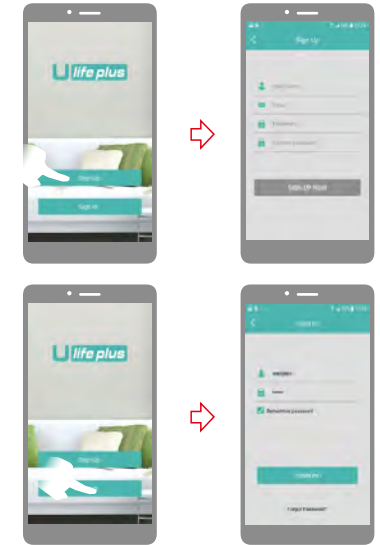


B. Enter the "Google Play" store on Android smartphone. Search for "U-life Plus" and install. Or scan the QR code to install it directly.



5. Take the operation of Android client-end as example, and refer to Android client-end for IOS client-end.

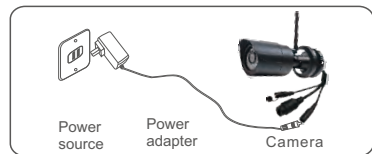
6. Open APP, register an ID first, then please login. (special characters (such as "%", "\", "<>" etc...) are not allowed.)



Prompt: please use a valid and useable mailbox during user registration, for recovering the password.

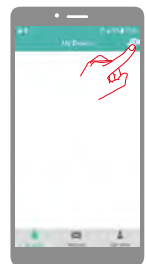
### Adding mode by WiFi

1. Please connect the camera to the power and turn it on, and then the red indicator light will twinkle slowly. (Fig.1)



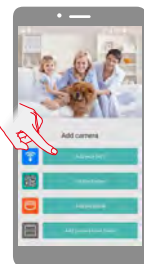
(Fig. 1)

2. Click + to add equipment; (Fig. 2)



(Fig.2)

3. Click "Add with WiFi". (Fig. 3)



(Fig.3)



(Fig.4)

4. Click the QR code icon and scan the QR code of the camera ID on the camera. The default name of the camera is "ipcamera" and can be modified. Finally, click "Next". (Fig. 5)

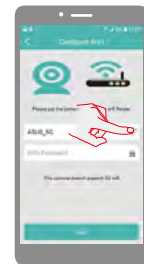
5. Press the Set button for 1-2s on the camera, and Link light turns red and flashes. (Fig.4)

7. Please click the icon to choose the name of your phone router, type in the right WiFi password, then click "Next". (Fig.6)

8. When the green light twinkles, the equipment is linked to the WiFi router. When the green light shines continuously, it means the U-life Plus platform is linked successfully. After successful connection, in the interface of the mobile phone, the list of equipment will automatically pop out. (Fig.7) Click the list of equipment to enter into the interface of real-time monitoring operations.



(Fig. 5)



(Fig. 6)

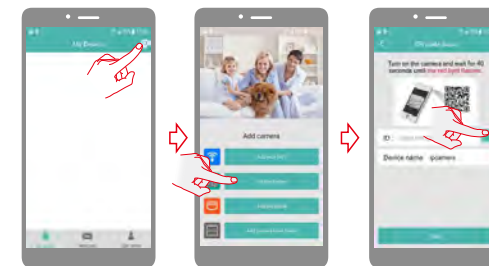


(Fig. 7)

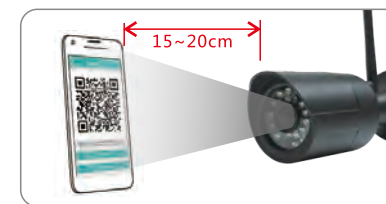
### Adding mode by scanning the QR code

1. Power camera on > Press SET for 1 second > Click Add by scanning the QR code to add the camera > Scan device ID > Enter the name and password for access to WiFi. Perform operations as instructed. (Figure 8 series)

2. Point camera to the QR code page on cell phone at a distance of about 15~20cm (as shown in Figure 9). If it beeps, scanning succeeds, and then click on I heard it to finish device binding operations.



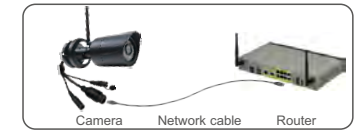
(Fig.8 series)



(Fig. 9)

### Wired Add

1. Connect the camera to the router via the wire. And connect the mobile to the WiFi of the router. (Figure 10)



(Fig. 10)

2. Power on the camera for startup → press SET for 1s → click "Add net cable" when adding the camera (Figure 11)

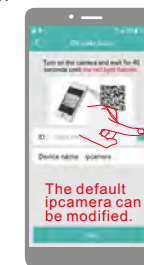
3. Click the QR code icon and scan the QR code of the camera ID on the camera. The default name of the camera is "ipcamera" and can be modified. Finally, click "Next". (Fig. 12)

4. Press the Set button for 1-2s on the camera, and Link light turns red and flashes. (Fig.4)

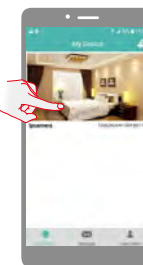
5. When the green light twinkles, the equipment is linked to the WiFi router. When the green light shines continuously, it means the U-life Plus platform is linked successfully. After successful connection, in the interface of the mobile phone, the list of equipment will automatically pop out. (Fig.13) Click the list of equipment to enter into the interface of real-time monitoring operations.



(Fig. 11)



(Fig. 12)

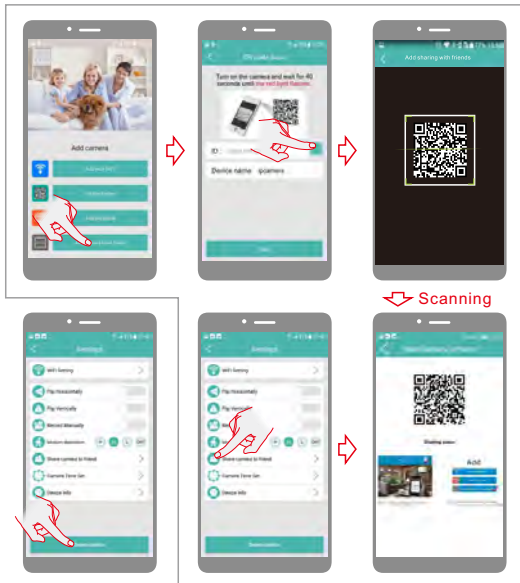


(Fig. 13)

**Note:** After successful connection to the platform via wired add, it cannot be automatically switch to WiFi Connection after pulling out the wire.

## Add camera for multi-users.

- 1.If your cell phone APP has added camera and connected successfully, next time when others adds, You click "Share your camera to friends", and then there will be a QR code in your APP. You share this QR code to your friends. And he/she click "Add camera from friend" to scan the QR code you provided. (Fig.14 series)
2. You can delete the device first, and unbind your ID with the camera, then others can add the camera freely. (Fig.15)

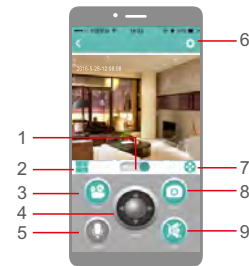


(Fig. 15)

(Fig.14 series)

## III Monitor View and Operations

With a successful connection, monitor view supports real-time monitoring, taking photos, recording videos, modifying setting and other operations.



(Fig. 16)

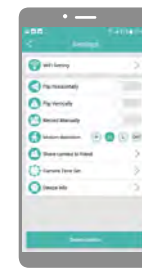
- 1.Click to switch between standard definition and high definition of real-time video.
- 2.Click to enter multi-video view, monitor at most 4 real-time video.
- 3.Click to start recording video, click again to stop recording. Video will be saved in smartphone.
- 4.Not supported drag adjust camera view angle .
- 5.Not support voice intercom.
- 6.Click to enter setting.
- 7.Click to view and download photos & videos saved in camera micro-SD card.
- 8.Click to take a photo. Photo will be saved in smartphone.
- 9.Click to mute the audio from camera. Click again to cancel.

## Notes:

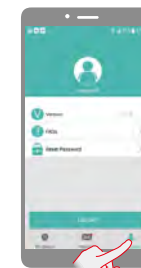
- 1.Photos and videos taken in the APP will be saved in smartphone.
- 2.Automatic photos and videos of movement detection will be saved in micro-SD card of camera.

## Settings

- 1.On the real-time monitoring interface, click the setting icon for entering into the camera setting menu. The user can set up the relevant functions for the "Camera time check" and others.(Fig. 17)
- 2.Open the APP, enter "User center" page to check APP version info etc. (Fig. 18)
- 3.Open the APP, enter "message" page to set message pushing. (Fig. 19)
- 4.TF card Instruction: Brand TF card is recommended. Pls format the TF card before use. If error occurs in storage reading, Please format the TF card as Fig.20.



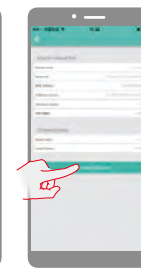
(Fig. 17)



(Fig. 18)



(Fig. 19)



(Fig. 20)

※ This camera is compatible with universal APP, actual function is subject to camera.

## IV Camera Indicator Instruction

Red light twinkles slowly	Which means its successfully turned up.
Red light twinkles fast	Which means its configuring the network.
Green light flashes.	Which means WiFi or the Internet is linked, in summary, the router is linked.
Green light is often on.	This indicates that the platform is connected to view remote videos.

## V Product Features

- 24/7 live video streaming
- HD 1080P provides excellent video quality
- Smart motion detection and notification
- Advanced video recording on built-in 8G micro-SD card
- Night vision (10m visibility)
- Quick & easy to set up

## VI Product Specifications

Image sensor	CMOS
Camera resolution	1920x1080
View angle	horizontal: 80°±5°
Night vision range	< 10m
Waterproof grade	IP66
Operation voltage	DC+12V/1A
Operation temperature	-10°C ~ + 50°C
Operation humidity	15% ~ 85% RH
Size (LxWxH)	184x70x70mm
Net weight	396g

※ No additional notice will be made in case of any minor change. Our company reserves the right of final interpretation.

## VII Packing Content



※ Pictures are for reference only, and the real object prevails.

## VIII Tips

- 1.In setting page of APP (Fig. 15), click "Delete device" to remove the connected camera, can remove the bonding with the account.
- 2.Movement detection: when movement is detected within the scope of camera, the camera will record video and take photos automatically. Videos and photos will be saved in micro-SD card.
- 3.Sharing with Friends: Share QR code of the device with your friends.
- 4.Cancel sharing with friends: Delete the camera and cancel sharing with friends. (You have to re-add the camera to use it again)
- 5.Push message: when movement is detected, alarm message can be sent to server and pushed to your phone.
- 6.Remote monitoring: after the camera is connected to Internet successfully, app can view the monitor via Internet, anytime, anywhere.
- 7.Only support the special characters in English mode, such as: "@, #, &, \*, ~, [ , ] , -, =, +, /, ?, (, )", Dont support the special characters, such as: "%", "\", "<>".
8. When this machine has a crash fault or other abnormal conditions influencing the usage, it is recommended to cut out the power and restart; or press SET key for 10 seconds, which can restore factory settings, and then please reconnect the router.
- 9.Special Note: This QR code is same as the one stuck on the outdoor camera. It is used when user need to re-do the set up and scan this QR code to add the camera. Please safe keeping this camera ID QR code on the manual, in case QR code on camera may fall off after daily use under the sun and rain.

## IX Troubleshooting

- 1.Wi-Fi cannot be connected
  - a) Ensure that the antenna of camera is fixed well.
  - b) Ensure that camera is in range of router. Keep the distance less than 40fts between router and indoor camera, less than 65fts for outdoor camera.
  - c) Ensure that SSID and password of Wi-Fi contains no special characters. Modify the SSID and password of Wi-Fi with only English characters, no special characters.
  - d) Ensure that SSID and password are no longer than 16 characters
  - e) Ensure that SSID is broadcasted.
  - f) Ensure that the DHCP is enabled on router.
  - g) Ensure that Wi-Fi encryption method is WPA2-PSK/WPA-PSK or AES.
  - h) Ensure that Wi-Fi signal is 2.4GHz.
  - i) Ensure that there is no MAC filter on router or add MAC address to router whitelist
  - j) We suggest rebooting the router, and the "security settings, encryption method" of WiFi password should never choose "auto-select".
  - k) Reset the camera to set up connection again. Press and hold SET key for 10 seconds.
- 2.Red Indicator remains, network connection is failed.
  - a) Ensure that the password of Wi-Fi is correct.
  - b) Ensure that the network connects to Internet freely.
  - c) Ensure that the camera is in range of Wi-Fi hotspot.
- 3.Green Indicator flashes, connection to server failed.
  - a) Ensure that Wi-Fi signal is strong enough and bandwidth is enough for connection. Move near to Wi-Fi hotspot or increase the bandwidth.
  - b) Ensure that camera is not under interferon of other 2.4GHz signal.

## X FCC/CE Certification Information

**NOTE:** This equipment has been tested and found to comply with the limits for a Class B digital device, pursuant to part 15 of the FCC Rules. These limits are designed to provide reasonable protection against harmful interference in a residential installation. This equipment generates uses and can radiate radio frequency energy and, if not installed and used in accordance with the instructions, may cause harmful interference to radio communications. However, there is no guarantee that interference will not occur in a particular installation. If this equipment does cause harmful interference to radio or television reception, which can be determined by turning the equipment off and on, the user is encouraged to try to correct the interference by one or more of the following measures:

- Reorient or relocate the receiving antenna.
- Increase the separation between the equipment and receiver.
- Connect the equipment into an outlet on a circuit different from that to which the receiver is connected.
- Consult the dealer or an experienced radio/TV technician for help

Changes or modifications not expressly approved by the party responsible for compliance could void the user's authority to operate the equipment. This device complies with Part 15 of the FCC Rules. Operation is subject to the following two conditions:

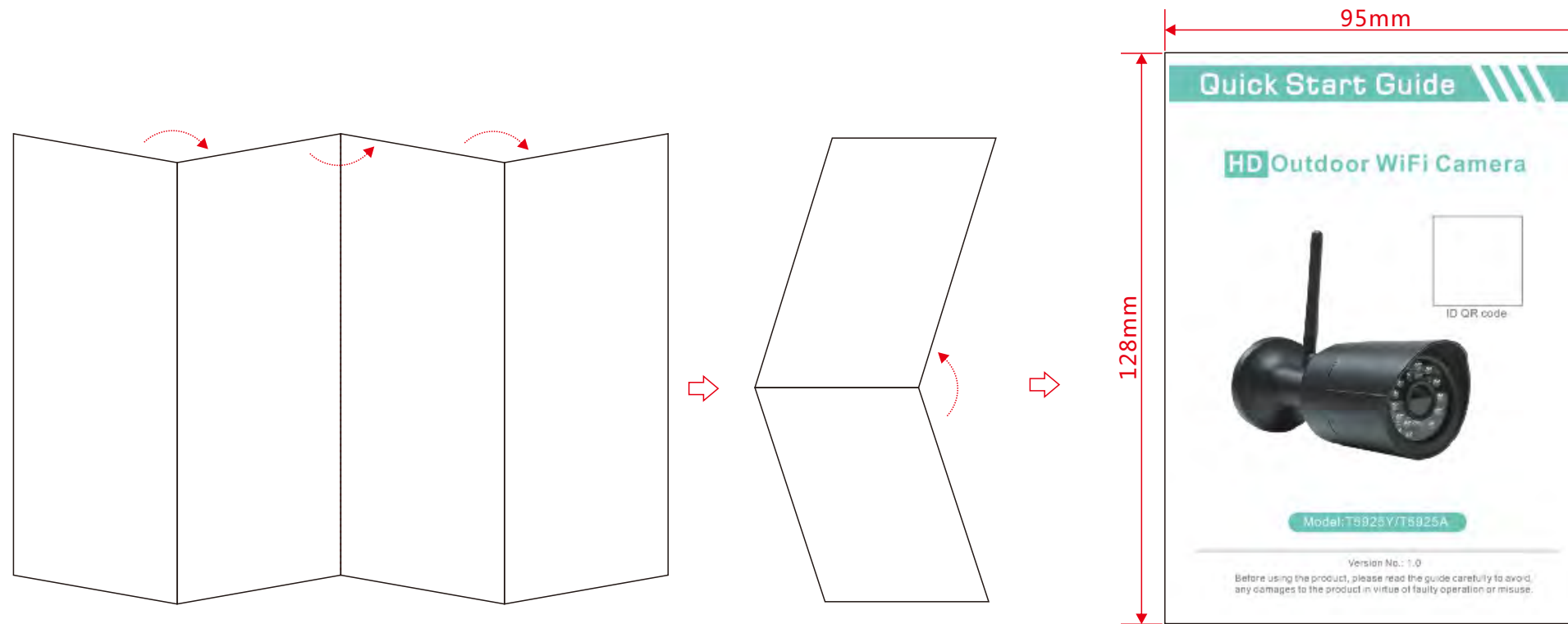
- (1) this device may not cause harmful interference, and
- (2) this device must accept any interference received, including interference that may cause undesired operation.

The Maximum Permissible Exposure (MPE) level has been calculated based on a distance of d=20 cm between the device and the human body. To maintain compliance with RF exposure requirement, use product that maintain a 20cm distance between the device and human body. Hereby, we declares that this device is in compliance with the essential requirements and other relevant provisions of Directive 2014/53/EN. Notice: Observe the national local regulations in the location where the device is to be used. This device may be restricted for use in some or all member states of the European Union (EU)

## EU Environmental Provisions

E-waste cannot be mixed with household garbage; corresponding local government sector or recycling stations shall be responsible for circular process.





Folding Schematic      Front side  
 折叠示意图          正面

Size of the finished product after folding: 95\*128 mm  
 Display size: 380\*256mm  
 Material: 105g art paper  
 Color: 4C printing on front and back sides  
 折叠后成品尺寸：95\*128mm  
 展开尺寸：380\*256mm  
 材质：105g铜版纸  
 颜色：4C 正反两面印刷

<b>GOSCAM®</b> 深圳市高斯贝尔家居智能电子有限公司				<b>技术要求</b>	
绘图：汪敏 2017-05-24	零件名称：英文说明书	物料编号：	折叠后成品尺寸：95*128mm 展开尺寸：380*256mm 材质：105g铜版纸 颜色：4C 正反两面印刷		
审核：	机种名称：T5925	比例：电子档1:1			
批准：	客户名称：中性	版本：1.1			
<b>变更履历</b>	新版本	变更时间	变更前		变更后
	1.1	20170626	III 设置页面APP功能不支持声音 有底座盖		III 设置页面APP功能支持声音 去掉底座盖 增加TF格式化描述
说明：					