

333503B

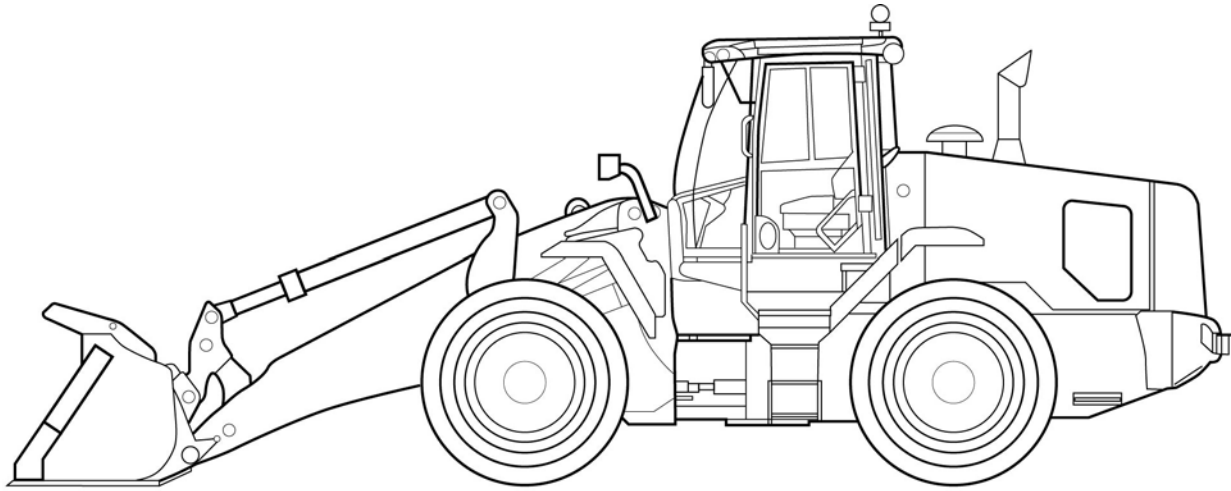
# Mobile Lubrication Library Wheel Loader



## Suggested wheel loader automated lubrication system layout

Kit No.: 24R377, G3, USP, 31PT

Maximum System Working Pressure: 3000 psi (206 bar, 20.7 MPa)



### Important Safety Information

Read all warnings and instructions in all related manuals. Save all instructions.

Related Manuals	
Manual No.	Manual Title
3A0414	G3 Pump
3A0525	Pressure Relief Valve
3A0528	Remote Manual Run
3A0860	USP Valves



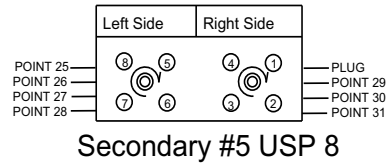
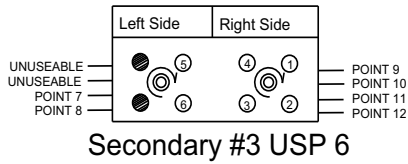
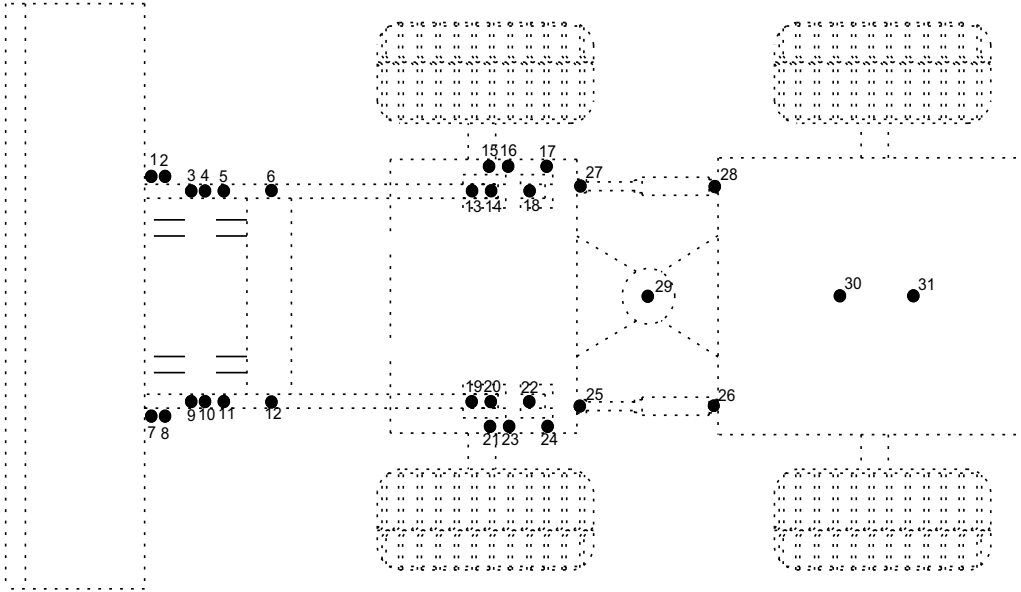
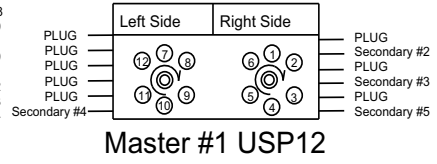
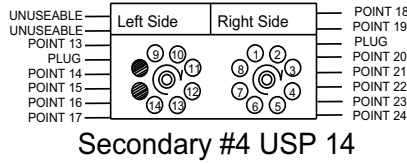
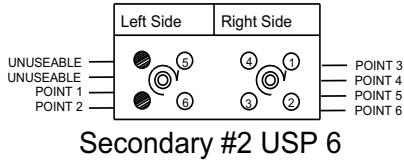
Fluid leaks from incorrectly installed or ruptured components, and/or failure to verify the components are properly installed and tested, can result in serious injury such as fluid spraying in the eyes or on skin and fluid injection, or equipment damage.

To prevent injury or equipment damage, installation must be done by a professional and tested prior to use. Consult Parker literature for specific hose assembly instructions. These instructions are available from your Parker representative or at [www.Parker.com/pdf](http://www.Parker.com/pdf).

The information contained in this document is only a recommendation for an automatic lubrication system and is not intended to replace the installation and maintenance instructions provided by the original equipment manufacturer.

# Suggested Lube Points

## USP Valves

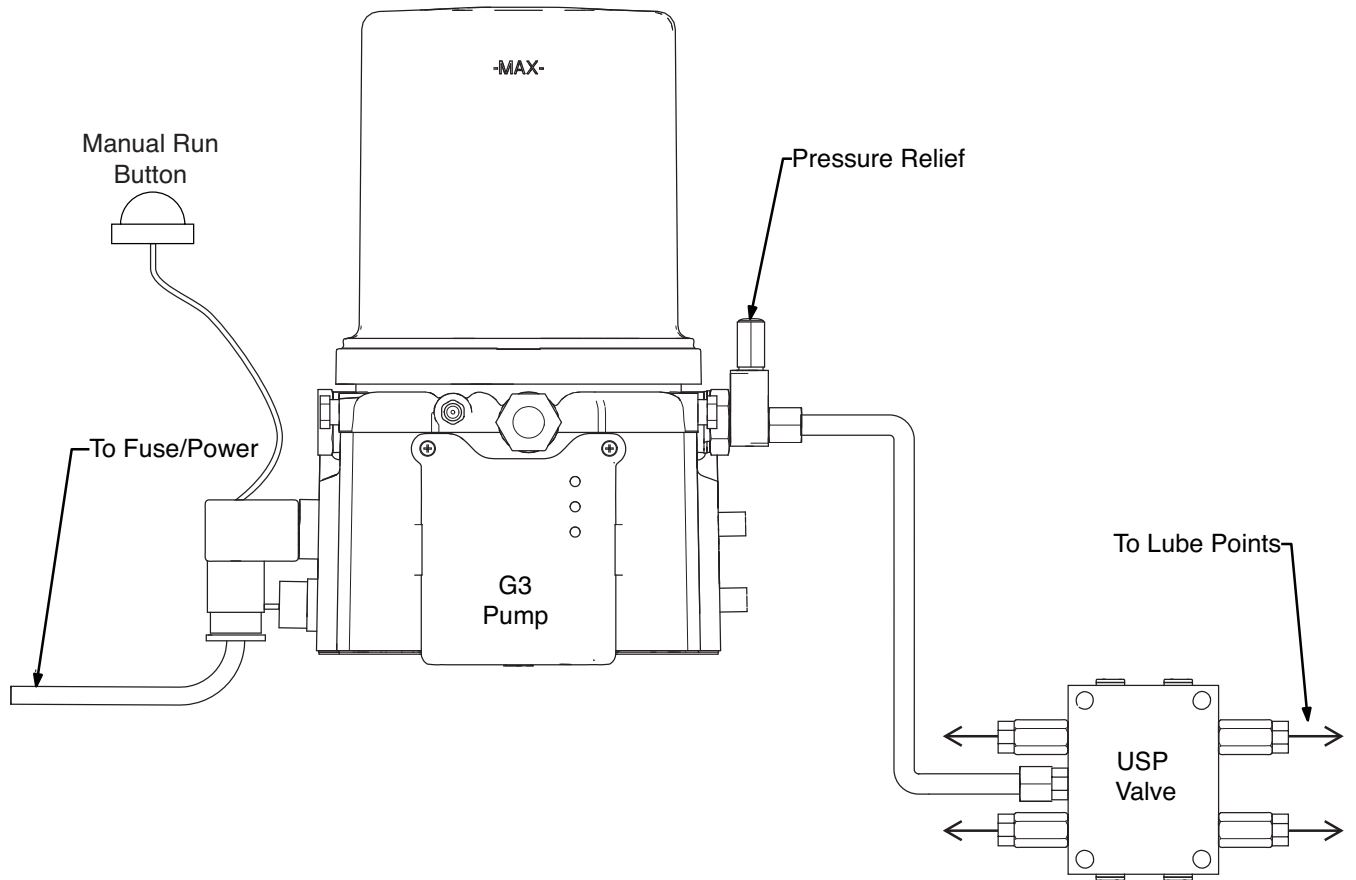


<b>LUBE POINT INFORMATION</b>				
Lube Point	USP Outlet	Bearing Description	USP Block	USP Volume Dispense
1	5	Bucket pin right	SB#2	Single
2	6	Bucket pin right lower	SB#2	Single
3	1	Bucket pin scissor upper right	SB#2	Single
4	2	Bucket pin scissor lower right	SB#2	Single
5	3	Cylinder head	SB#2	Single
6	4	H beam right	SB#2	Single
7	5	Bucket pin left	SB#3	Single
8	6	Bucket pin left lower	SB#3	Single
9	1	Bucket pin scissor upper left	SB#3	Single
10	2	Bucket pin scissor lower left	SB#3	Single
11	3	Cylinder foot	SB#3	Single
12	4	H beam left	SB#3	Single
13	9	Cylinder foot right	SB#4	Single
14	10 and 11	Cylinder foot left	SB#4	Double
15	12	Pivot pin lower right	SB#4	Single
16	13	Pivot pin mid right	SB#4	Single
17	14	Pivot pin upper right	SB#4	Single
18	1	Lower pivot right	SB#4	Single
19	2	Cylinder head left	SB#4	Single
20	3 and 4	Cylinder head left	SB#4	Double
21	5	Pivot pin lower left	SB#4	Single
22	6	Lower pivot left	SB#4	Single
23	7	Pivot pin mid left	SB#4	Single
24	8	Pivot pin upper left	SB#4	Single
25	5	Articulation cylinder head end left	SB#5	Single
26	6	Articulation cylinder foot left	SB#5	Single
27	7	Articulation cylinder head end right	SB#5	Single
28	8	Articulation cylinder foot right	SB#5	Single
29	1 and 2	Articulation pivot center	SB#5	Double
30	3	Differential	SB#5	Single
31	4	Differential	SB#5	Single

<b>24R377: Recommended Kit Parts List</b>		
Part Number	Description	Qty
96G112	PUMP, G3-G-24MX-8L0L00-UDMVA1R2 (see manual 3A0414)	1
571036	KIT, accessory, cover	1
571028	KIT, accessory, pressure relief (see manual 3A0525)	1
24E406	KIT, valve, USP, 6 outlet (see manual 3A0860)	2
24E407	KIT, valve, USP, 8 outlet (see manual 3A0860)	1
24E409	KIT, valve, USP, 12 outlet (see manual 3A0860)	1
24E410	KIT, valve, USP, 14 outlet (see manual 3A0860)	1
571033	KIT, remote manual run, 24V, w/ cable (see manual 3A0528)	1
24N007	KIT, accessory, mounting, USP, 6-8	3
24N008	KIT, accessory, mounting, USP, 10-12	1
24N009	KIT, accessory, mounting, USP, 14-16	1
16U586	KIT, accessory, hose, 100 ft	1
556773	HOSE, end female swivel SAE 4 JIC	10
556763	FITTING, 4 JIC 1/8 pm	33
555749	CONNECTOR, 4 JIC 1/8 pm	39
557393	COUPLING, 1/8 fp x 1/8 mp x 1-1/4 HEX	31
556402	FITTING, 1/4 x 1/8 nptf hex	1
557349	PLUG, dryseal 1/8 nptf	5
16U587	KIT, accessory, guard, scuff, 75 ft	1
15K783	FITTING, elbow, street, 1/8	5
127009	TIE, cable, 14.75' x .31" black	8
16U982	KIT, accessory, hose, 200 ft	1
16U983	KIT, accessory, guard, scuff, 160 ft	1
24F467	PLUG, USP, doubling plug	11
557944	CLAMP, 7/16, tube 4TS6-14002	20
127012	CLAMP, hose, .375 OD hose	20
563178	COUPLING, extension 1/8 female to 1/8 male	5
127013	FITTING, swivel, JIC 37D size #4	62

<b>USP VALVES* AND ACCESSORIES</b>	
Part Number	Description
24E408	KIT, valve, USP, 10 outlet
24E411	KIT, valve, USP, 16 outlet
*see manual 3A0860	

# Typical Pump Installation



## Graco Information

For the latest information about Graco products, visit [www.graco.com](http://www.graco.com).

**TO PLACE AN ORDER**, contact your Graco distributor or call to identify the nearest distributor.

**Phone:** 612-623-6928 **or Toll Free:** 1-800-533-9655, **Fax:** 612-378-3590

*All written and visual data contained in this document reflects the latest product information available at the time of publication.  
Graco reserves the right to make changes at any time without notice.*

*For patent information, see [www.graco.com/patents](http://www.graco.com/patents).*

Original information. This manual contains English. MM 333503

**Graco Headquarters:** Minneapolis

**International Offices:** Belgium, China, Japan, Korea

**GRACO INC. AND SUBSIDIARIES • P.O. BOX 1441 • MINNEAPOLIS MN 55440-1441 • USA**

**Copyright 2013, Graco Inc. All Graco manufacturing locations are registered to ISO 9001.**

[www.graco.com](http://www.graco.com)

August 2013, revised January 2014