

Grandstream Networks, Inc.

1297 Beacon Street, 2nd Floor
Brookline, MA 02446, USA
Tel : +1 (617) 566 - 9300
Fax: +1 (617) 247 - 1987

深圳市南山高新科技园中区
科发路2号1栋（朗峰大厦）5楼
电话: +86 755-2601-4600
传真: +86 755-2601-4601

www.grandstream.com

www.grandstream.cn



GXV3612-N GXV3612-P
IP CAMERA



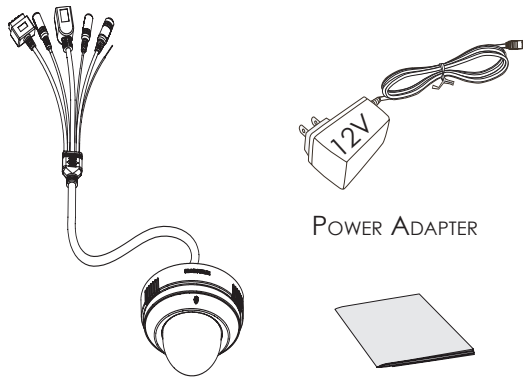
User manual

Content

English.....1

- Do not attempt to open, disassemble, or modify the device
- Do not use a third party power adapter
- Do not expose this device to temperatures outside the range of -10°C to +55°C
- Do not expose the GXV3612-N,GXV3612-P to environments outside of the following humidity range: 10-90 % RH (non-condensing)

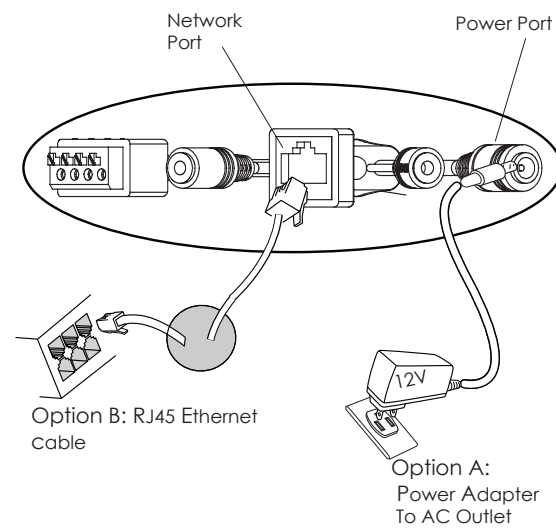
PACKAGE CONTENTS



POWER ADAPTER

Twist open the dome camera clear cover and remove the lens cap.

Refer to the illustration below when following the instructions on the next page.



NOTE: Choose Option A if using the power supply. Or choose Option B if using a Power

Option A

Step 1: Insert the power adapter into the 12V DC port on the GXV3612-N,GXV3612-P. Plug the other end of the adapter into an AC power outlet.

Step 2: Plug an RJ45 Ethernet cable into the network port. Plug the other end into a hub, switch or router.

Option B

Step 1: Plug an RJ45 Ethernet cable into the network port. Plug the other end into a Power.

CONFIGURATION

Configuring using Microsoft Internet Explorer

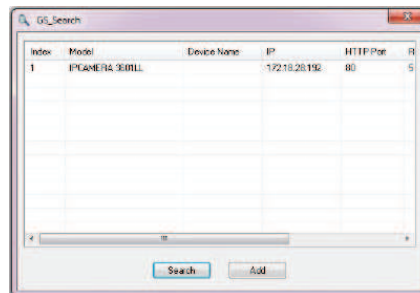
Connect to the DHCP server

Step 1: Navigate your browser to:
http://www.grandstream.com/support/gxv_series_surveillance/general/resources/gx_search.zip

Step 2: Run the Grandstream GS_Search tool, that you just downloaded.

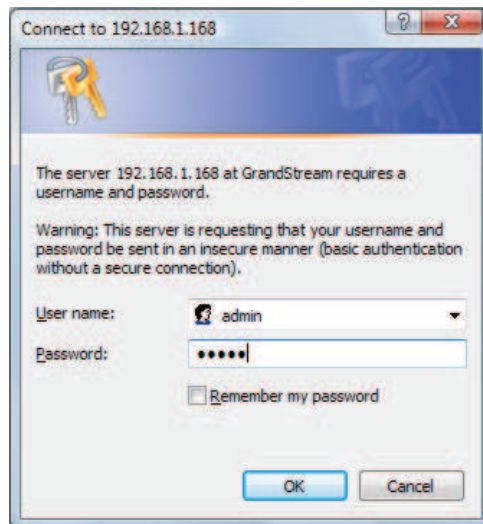
Step 3: Click on  button in order to begin device detection

Step 4: The detected devices will appear in the Output field

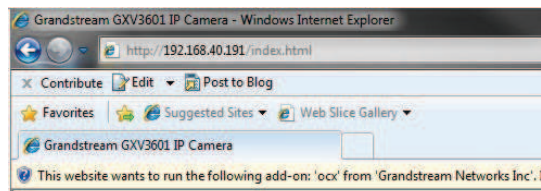


Step 5: Open Microsoft Internet Explorer on your PC.
Type in the IP in the address bar.

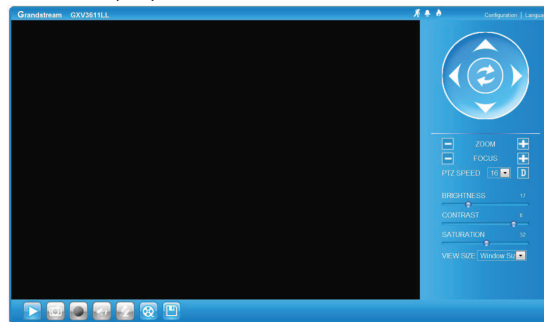
Step 6: A pop-up window will appear with prompts for a user name and password. The default administrator user name and password are both set to "admin" at the default factory configuration.



Step 7: Once you log into web interface Internet Explorer will indicate that "This website wants to install the following add-on: 'GSViewer.cab' from Grandstream Networks, Inc." Install this add-on by following the instructions.



Step 8: Once the installation of GSViewX.cab is completed you will see the web page shown in the screenshot on the next page. Click on the play button to view the video feed.



Step 9: Click through the menu on the left hand side of the web UI for more advanced configuration parameters.

Connect using Static IP

If the camera does not get a response from the DHCP server after 3 minutes, it can be accessed by the default IP 192.168.1.168

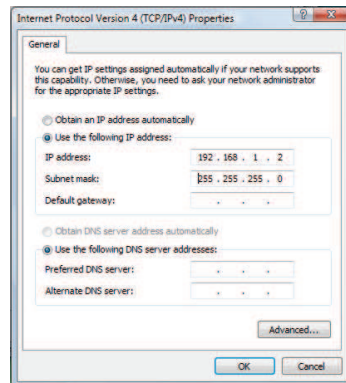
Step 1:

Connect your PC and the GXV3612-N,GXV3612-P to the same network.

Step 2:

192.168.1.X. Set the Default Gateway of

Set the IP address of your PC to your PC to 255.255.255.0.

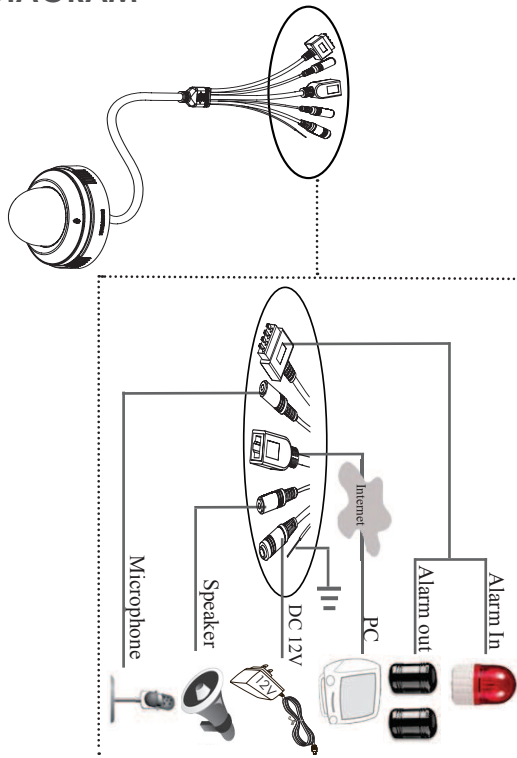


Step 3: Open Microsoft Internet Explorer on your PC.
Type 192.168.1.168 in the address bar.

Step 4-7: Please refer to Step 6-9 on Page 5.

Please download the user manual and FAQ
for more detailed configuration instructions:
<http://www.grandstream.com/support>

SAMPLE CONNECTION DIAGRAM



LENS SPECIFICATIONS

Image Format	1/4"
Image Sensor	CCD
Focal Length	3.8~38 mm
View Angle	5.58°~51.2°
Aperture	1.8°

Note:

The smoke detector in the GXV3612 mini dome camera is not intended to replace any smoke detector alarm system. The smoke detector does not comply with the National Alarm and Signaling Code, nor does it provide any form of visual or audible signal to alert the premises dwellers. You must not replace any existing smoke alarm system with this product.

FCC CAUTION

Any Changes or modifications not expressly approved by the party responsible for compliance could void the user's authority to operate the equipment.

This device complies with part 15 of the FCC Rules. Operation is subject to the following two conditions: (1) This device may not cause harmful interference, and (2) this device must accept any interference received, including interference that may cause undesired operation.

Note: This equipment has been tested and found to comply with the limits for a Class B digital device, pursuant to part 15 of the FCC Rules. These limits are designed to provide reasonable protection against harmful interference in a residential installation. This equipment generates uses and can radiate radio frequency energy and, if not installed and used in accordance with the instructions, may cause harmful interference to radio communications. However, there is no guarantee that interference will not occur in a particular installation. If this equipment does cause harmful interference to radio or television reception, which can be determined by turning the equipment off and on, the user is encouraged to try to correct the interference by one or more of the following measures:

—Reorient or relocate the receiving antenna.

—Increase the separation between the equipment and receiver.

—Connect the equipment into an outlet on a circuit different from that to which the receiver is connected.

—Consult the dealer or an experienced radio/TV technician for help.