



Grandstream Networks, Inc.

GXV3615WP_HD Series User Manual

Safety Instructions

These instructions are intended to assist users with the operation of the GXV3615WP_HD and also to instruct on how to avoid dangerous situations or damage to the device.

Warnings: Serious injury or death may be caused if any of the warnings below are neglected.

Cautions: Injury or damage to the equipment may occur if any of the following caution messages are neglected.



Warnings Follow these safeguards to prevent serious injury or death.



Cautions Follow these precautions to prevent potential injury or material damage.



Warnings:

Input voltage should meet both the SELV (Safety Extra Low Voltage) and the Limited Power Source with DC 12V according to the IEC60950-1 standard. Please refer to the technical specifications for more details.

Do not use a third-party power adapter or power cord

When the device is installed on the wall or ceiling, make sure that it is firmly attached.



Notice:

Make sure that the power supply voltage is correct before using the camera.

Do not drop the device or expose it to physical shock.

Do not expose the device to temperatures outside the range of -10 °C to +60°C when the device is in operation.

Do not expose the device to damp/wet conditions or high electromagnetism radiation.

To avoid heat accumulation, make sure that your operating environment has proper ventilation.

Do not attempt to open, disassemble, or modify the device

A few parts (e.g. electrolytic capacitor) of the equipment shall be replaced regularly according to their average life time. The average life time varies from the differences between operating environments and usage history. Regular maintenance checks are recommended for all users. Please contact your dealer for more details.

Contents

Welcome	4
Package Contents	5
Product Overview	5
GXV3615WP_HD Series Overview	5
GXV3615WP_HD Series Front Panel	6
GXV3615WP_HD Series Back Panel	6
GXV3615WP_HD Series Sample Connection Diagram	6
GXV3615WP_HD Series Key Features	7
GXV3615WP_HD Lens Specification	8
Minimum Recommended System Requirement	9
Connect your GXV3615WP_HD Series	9
Configuring the GXV3615WP_HD Series via Web Browser	10
Access GXV3615WP_HD Series Web Configuration Menu	10
Connect the Camera to DHCP server	10
Connect to the Camera using Static IP	11
GXV3615WP_HD Series Home Web Page	12
GXV3615WP_HD Series System Page	13
GXV3615WP_HD Series Video & Audio Page	14
GXV3615WP_HD Series Networking Page – Assign an IP to GXV3615WP_HD	15
GXV3615WP_HD And GXV3615W_HD Wifi Page – This page is only available for GXV3615W_HD and GXV3615WP_HD	16
GXV3615WP_HD Series DDNS Page	16
GXV3615WP_HD Series SIP Page	17
GXV3615WP_HD Series Status Page	19
GXV3615WP_HD Series User Management Page	20
GXV3615WP_HD Series Maintenance Page	20
GXV3615WP_HD Series SMTP Page	21
GXV3615WP_HD Series FTP Page	22
GXV3615WP_HD Series Motion Detection Page	22
GXV3615WP_HD Series System Log	24
FAQ	25
Compliance	29

Welcome

The GXV3615WP_HD Series is a next generation IP camera for remote monitoring and surveillance over your LAN or internet.

The GXV3615WP_HD Series combines best in class IP video technology and SIP protocols for a robust IP surveillance solution. The product features H.264 video streams with up to 30 frames per second in full D1, delivering rich image clarity at rapid transmission rates. Integrated SIP can pass alarms to the PSTN, mobile phones, SIP IP phones, SIP videophones and enables 2-way VoIP communication. The GXV3615WP_HD series also support PoE(GXV3615WP_HD and GXV3615P_HD) or WIFI (GXV3615WP_HD and GXV3615W_HD).

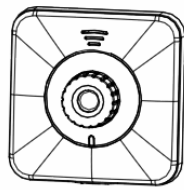
The GXV3615WP_HD Series ensures ease of use, integration and deployment with a multilingual graphical user interface. The GXV3615WP_HD Series can be quickly installed and connected to your network and accessed from anywhere over the internet. Grandstream's flexible video management software enables users to monitor multiple environments in one easy to use application. The intuitive web interface lets users easily access, manage, view and record live video streams from the device.

The GXV3615WP_HD Series is a powerful solution for small to medium sized offices, homes and storage facilities looking to safeguard their valuables.

Package Contents

Items in the package:

- GXV3615WP_HD /GXV3615W_HD / GXV3615P_HD/ GXV3615_HD IP Camera
- 12V DC power Adapter
- Mount Stand
- Ethernet Cable
- Quick installation guide



GXV3615



MOUNTING
STAND



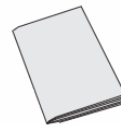
POWER ADAPTER



ETHERNET CABLE



MOUNTING
SCREWS



QUICKSTART GUIDE

Product Overview

GXV3615WP_HD series includes 4 models: GXV3615WP_HD /GXV3615W_HD / GXV3615P_HD/ GXV3615_HD

GXV3615WP_HD Series Overview

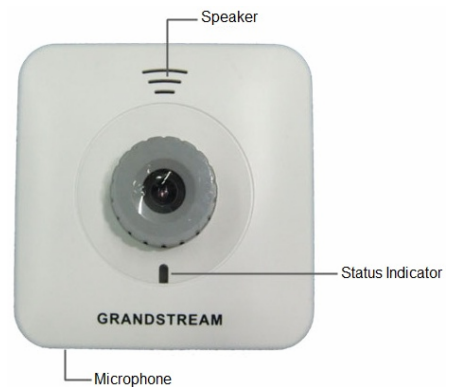


GXV3615WP_HD Series Front Panel

Speaker– GXV3615WP_HD built-in speaker

Status Indicator – Red when power up / Green when ready.

Microphone– GXV3615WP_HD built-in microphone



GXV3615WP_HD Series Back Panel

NETWORK – 10/100 Switch LAN port for connecting to Ethernet. The indicator will be steady for connection and flashing for network activity.

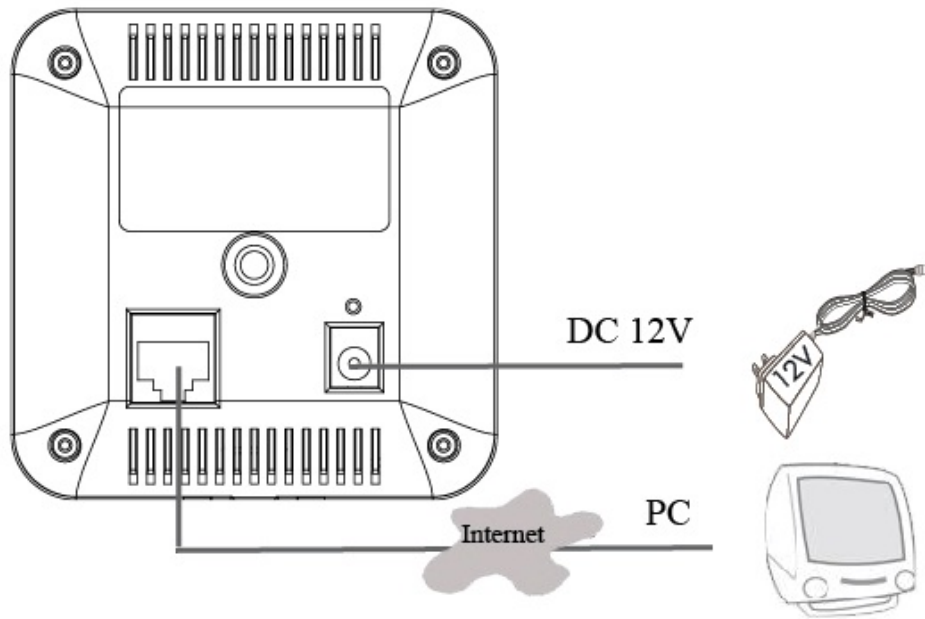
DC 12V – 12V DC power jack; UL Certified.

RESET – Press the Reset button for 6 seconds to

Mounting Socket – This is used for mounting GXV3615WP_HD



GXV3615WP_HD Series Sample Connection Diagram



GXV3615WP_HD Series Key Features

The table below lists the key features the GXV3615WP_HD Series.

Features	GXV3615WP_HD	GXV3615W_HD	GXV3615P_HD	GXV3615_HD
Image Sensor	1/3", CMOS, 1600H x 1200V pixel resolution, exceptionally low noise levels and low-light sensitivity achieve superior resolution at CCD image quality			
Lens Type	1/3", M12, f=4.20mm, F1.5, FOV=64°			
Minimum Illumination	0.05Lux			
Video Compression	H.264, JPEG, Motion JPEG			
Max Video Resolution	1600x1200, 1280x960, 1280x720, 1024x768, 800x592, 800x480, 640x480, 640x368, 480x368, 480x272, 320x240, 320x176, 256x192, 256x144, 160x112			
Pixel Dynamic Range	82dB			
Max Frame Rate in Max	30fps			
Video Bit Rate	16 Kbps – 2 Mbps			
Audio Input	Built-in Microphone			
Audio Output	Built-in Speaker			
Audio Compression	G.711, G726			
Embedded Analytics	Motion Detection (up to 16 target areas), video loss (pending)			
Video Management System	ONVIF compliant, HTTP API for advanced integration			
Pre-/post alarm buffer	24MB			

Snapshots	Trigger upon events, send via email/FTP			
Network Protocol	TCP/UDP/IP, RTP/RTCP, RTSP, DHCP, DDNS, HTTP, HTTPS, SMTP, FTP, NTP			
Network Port	10M/100M auto-sensing, RJ45			
Multi-streaming-rate for Preview and Recording	Yes			
Security	HTTPS, password			
Power over Ethernet (PoE)	Standard, IEEE 802.3af Class 3	N/A	Standard, IEEE 802.3af Class 3	N/A
Wi-Fi (802.11b/g/n)	N/A	Yes	N/A	N/A
SIP/VoIP Support	Yes, Voice & Video-over-IP			
Weight	0.128kg			
Temperature / Humidity	0°C – 45°C (32°F–113°F) Humidity 10–90% RH (non-condensing)			
Power	Output: 12VDC/0.5A; Input: 100–240VAC, 50–60Hz			
Compliance	FCC, CE, C-tick, RF, ERC70-03, 15.105 Please see page 29 for compliance detail.			

GXV3615WP_HD Lens Specification

Parameters	GXV3615WP_HD /GXV3615W_HD / GXV3615P_HD/ GXV3615_HD
Lens Mount	M12
Lens Format	1/3"
Focal Length	4.2 mm
Aperture (D/f')	1.5
View Angle	64
Size (Diameter x Length 1 x Length 2)	14x12.91mm

Installation Guide

Minimum Recommended System Requirement

- Windows 2000 Server Professional, Windows XP, Windows Vista.
- CPU: Intel Pentium 4 or higher, 2 GHz.
- RAM: 1 GB (4 GB recommended for larger systems).
- Support for DirectX 8.0 and above.

Connect your GXV3615WP_HD Series

Using the Power adapter as power supply

- Connect an RJ-45 cable to the NETWORK port of the GXV3615WP_HD.
- Connect the other end of the RJ-45 cable to your network or PC.
- Connect the power supply to the DC 12V power jack on the back of the GXV3615WP_HD.

Using PoE as power supply: (Not applicable on GXV3615W_HD and GXV3615_HD)

- Connect an RJ-45 to the NETWORK port of GXV3615WP_HD.

NOTE: If you are going to connect the device to a hub/switch/router, please use a straight-through cable. A cross over cable should be used if you are going to connect the device directly to a PC.

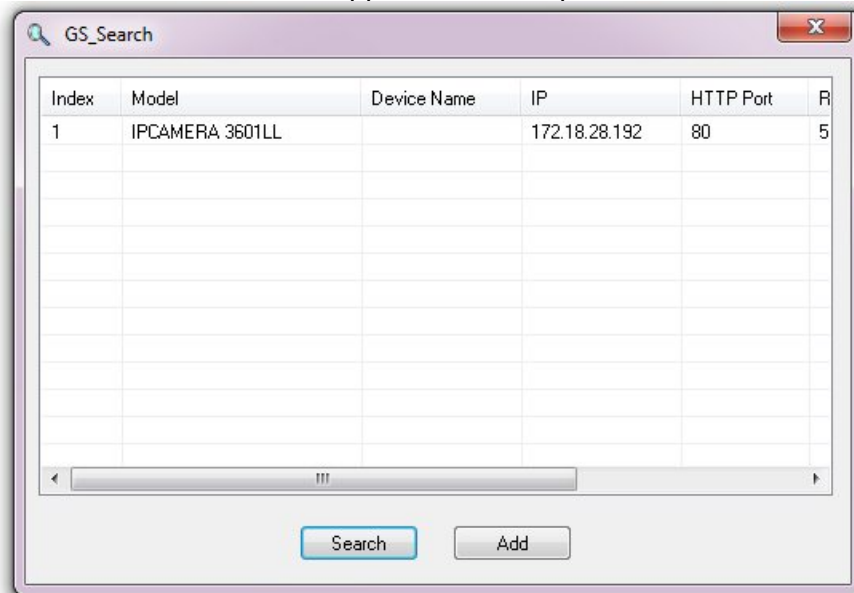
Configuring the GXV3615WP_HD Series via Web Browser

The GXV3615WP_HD's embedded Web server responds to HTTP/HTTPS GET/POST requests. Embedded HTML pages allow you to configure your IP camera through Microsoft Internet Explorer.

Access GXV3615WP_HD Series Web Configuration Menu

Connect the Camera to DHCP server.

1. Navigate your browser to:
http://www.grandstream.com/support/gxv_series_surveillance/general/resources/gsearch.zip
2. Run the Grandstream GS_Search tool, that you just downloaded.
3. Click on button in order to begin device detection
4. The detected devices will appear in the Output field



5. Start Internet Explorer on your computer.
6. Enter device IP in the address bar of the browser.
7. Enter the administrator user name and password to access the Web Configuration Interface
8. The default user name and password are both set to **admin**.
9. IE will indicate that "This website wants to install the following add-on: 'GSViewerX.cab' from 'Grandstream Networks Inc'." Install this add-on by following the instructions in IE.
10. You will see the home page.

Connect to the Camera using Static IP.

If the camera does not get response from DHCP server after 3 minutes, it can be accessed by the default IP 192.168.1.168.

1. Connect your PC to the same network as the GXV3615WP_HD.
2. Configure the IP address of your PC to: 192.168.1.XXX (1<XXX<255) and configure the subnet mask to 255.255.255.0.
3. Make sure that the device is turned on and connected to the network.
4. Start Internet Explorer on your computer.
5. Enter 192.168.1.168 in the address bar of the browser.
6. Enter the administrator user name and password to access the Web Configuration Interface
7. The default user name and password are both set to admin.
8. IE will indicate that "This website wants to install the following add-on: 'GSViewerX.cab' from 'Grandstream Networks Inc'." Install this add-on by following the instructions in IE.
9. You will see the home page.

GXV3615WP_HD Series Home Web Page

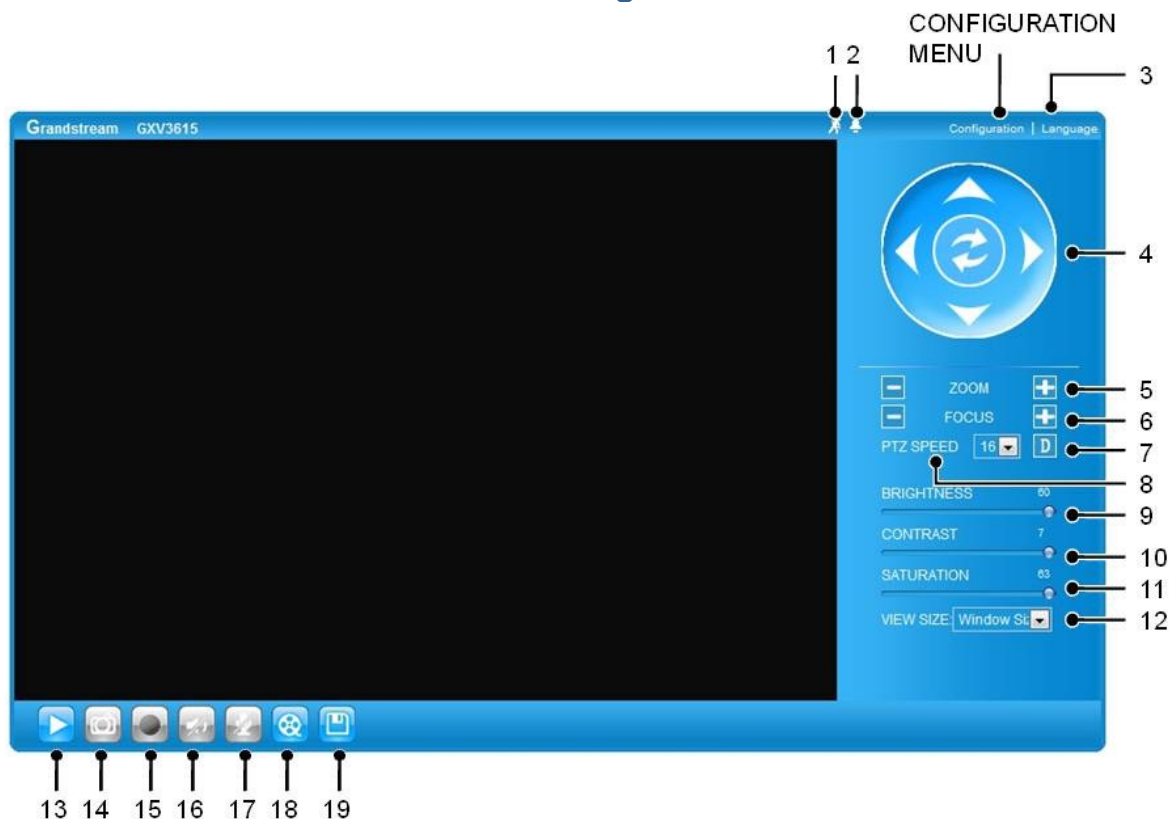


Figure1: Home web page of GXV3615WP_HD

Items on GXV3615WP_HD Home Page

- | | | |
|-----------|-------------------------|---|
| 1 | Motion Detection | If the motion detection alarm is triggered, the indicator will flash red . Click on the indicator to turn off the alarm. |
| 2 | Alarm Event | If an alarm event is triggered, the indicator will flash red . Click on the indicator to turn off the alarm. |
| 3 | Language | Allow to switch between English and Chinese |
| 4 | Control Console | PTZ Console controller. PTZ device needs to be connected. |
| 5 | ZOOM | NOTE: GXV3615WP_HD does not support zoom |
| 6 | FOCUS | Adjusts the focus of images. |
| 7 | Default | Click this option to reset the video brightness, contrast, and saturation to their factory default configuration. |
| 8 | SPEED | Adjusts the rotation speed of the console. |
| 9 | BRIGHTNESS | Adjusts the image brightness. |
| 10 | CONTRAST | Adjusts the image contrast. |
| 11 | SATURATION | Adjusts the image saturation. |
| 12 | View Size | Resize the image to fit into the window panel in the home screen. |
| 13 | Play | Plays/Stops the video. |

- 14 Capture** Captures the image displayed and saves it to **C:\IGS_Capture** (default directory).
- 15 Record** Records the video and saves it to **C:\IGS_Record** (default directory).
- 16 Sound Off/On** Toggles the sound On or Off.
- 17 Talk** Establishes two-way audio.
- 18 Playback** Replays the saved video.
- 19 Config** Configures the Save Location for captured images and recorded videos.

GXV3615WP_HD Series System Page

This page allows you to configure the system settings on GXV3615WP_HD.

Current System Time - displays the current date and time (24h clock).

Current System Time

Date:

Time:

Set the System Time

Update via NTP Server

- the camera will obtain the time from an NTP server Specify the NTP server's IP address or host name. And you can select your time zone

Set the System Time

Time Zone:

Update via NTP Server

Synchronize with Local Computer

Set the Time Manually

Keep Current Date and Time

from the drop-down list or define your own time zone setting.

NOTE: If using a host name for the NTP server, a DNS server must be configured under **Basic Settings -> Networking**.

Synchronize with Local Computer - sets the time from the clock on your computer.

Set the Time Manually - this option allows you to manually set the time and date.

OSD Date Format - set the format of date on OSD

OSD Date Format

OSD Date Format:

Device Name Setting -This field lets you configure the name of the GXV3615WP_HD, which

Device Name Setting

Device Name:

helps GSurf and GS_NVR to identify the device when using **GS_Search** to search all the

Grandstream network cameras or digit video cameras in the same subnet.

GXV3615WP_HD Series Video & Audio Page

On Screen Display (OSD) Settings

OSD Time/ Text – The time stamp and channel name displayed on the screen.

On Screen Display(OSD)

OSD Text:

OSD Position:

OSD Transparency:

OSD Color:

Display Time:

Display Text:

Video Settings

Preferred Video Codec – The GXV3615WP_HD supports the H.264 video codec.

Resolution – The higher the resolution is, the better the video quality is, and higher bandwidth is required.

Low -----> High Resolution
 QCIF CIF 2CIF D1

Bit Rate – The number of bits that are conveyed or processed per unit of time.

Maximum Frame Rate – The video frame rate is adjustable based on network conditions. *Increasing the frame rate will increase the amount of data significantly therefore consuming more bandwidth.* Video will be impaired due to packet loss when there is insufficient bandwidth.

Bit Rate Control – Variable Bit rate (VBR) and Constant Bit Rate (CBR).

Variable Bit Rate - If VBR is selected, the codec varies the amount of output data per time segment. VBR produces a better quality-to-space ratio. The bits available are used to enable more flexibly and encode sound or video data more accurately, with fewer bits used in less demanding passages and more bits used in difficult-to-encode passages.

Constant Bit Rate - If CBR is selected, the codec’s output data is constant regardless of the input data. The output bit rate is defined in “Bit rate”. CBR is useful for streaming multimedia content on limited capacity channels. It is easier to calculate required bandwidth as well as the required storage space using CBR.

I-frame Interval – While streaming video over a network, compression technologies are used

Video Settings

Preferred Video Codec:

Resolution:

Bit Rate: kbps

Maximum Frame Rate: fps

Bit Rate Control: CBR VBR

I-frame Interval: Frame(1-100)

to show the incremental difference between each frame. I-frames are used to help keep the video looking normal. When intervals are shorter, the video quality is higher but uses more bandwidth.

NOTE: The users might need to configure the **Primary Stream** and **Secondary Stream** properly. Sometimes, the user might like to watch the live video stream from the web GUI in low resolution mode while recording a copy via GSurf/GS_NVR in high resolution due to the limitation of internet bandwidth. In this case, for example, primary stream can be configured to have better resolution, and then the users can use primary stream to record while watching secondary video streams.

Audio Settings

Preferred Audio Codec – The GXV3615WP_HD supports up to 3 different Vocoder types, a-law (PCMA), u-law (PCMU) and G.726. The audio can also be turned off by switching the setting to “Disabled”

Audio Compression – Audio compression is a form of data

compression designed to reduce the size of audio files. Usually, the higher the audio compression is, the better the audio quality is.

Microphone Volume – Adjust the volume of build-in microphone.

Speaker Volume – Adjust the volume of build-in speaker.

Audio Settings	
Preferred Audio Codec:	PCMA
Audio Compression:	32 kbps
Microphone Volume:	3
Speaker Volume:	10

GXV3615WP_HD Series Networking Page – Assign an IP to GXV3615WP_HD

GXV3615WP_HD supports IP version 4. The IP address can set automatically via DHCP, or a static IP address can be set manually. To make GXV3615WP_HD work properly, the user needs to set the DNS configuration properly. For security purposes, the user can also assign the GXV3615WP_HD an HTTP Port other than 80.

IP Address Configuration

The GXV3615WP_HD operates in two modes:

Dynamically Assigned via DHCP – all the field values for the Static IP mode are not used. The GXV3615WP_HD acquires its IP address from the first DHCP server it discovers on its LAN.

Statically Configured as – configures all of the following fields: IP address, Subnet Mask, Default Gateway IP address, DNS Server 1 (primary), DNS Server 2 (secondary). These

IP Address Configuration	
<input type="radio"/> Dynamically Assigned via DHCP	
<input checked="" type="radio"/> Statically Configured as:	
IP Address:	192.168.40.191
Subnet Mask:	255.255.255.0
Default Gateway:	192.168.40.1

fields are set to zero by default. *Static IP addresses are recommended for the GXV3615WP_HD*

DNS Configuration

There are two methods of DNS configuration on the GXV3615WP_HD:

1. The GXV3615WP_HD can obtain the DNS server automatically
2. Users can configure their own preferred DNS server

HTTP Port

The GXV3615WP_HD supports user configured http ports. If the HTTP port is changed, the port number is needed to access the web GUI, for instance: <http://192.168.1.168:8080>.

NOTE: If the HTTP Port is 80, when you add this device to GSurf or GS_NVR, the RTSP port is 554. If the HTTP Port is changed, when you add this device to GSurf or GS_NVR, please make sure the RTSP port number equals HTTP Port plus 2000.

GXV3615WP_HD And GXV3615W_HD Wifi Page – This page is only available for GXV3615W_HD and GXV3615WP_HD

Enable Wifi – Checked to enable Wifi
SSID – Click on Scan to view available network. Choose a network and Click on Select to confirm.

Security Mode – Choose associated Security mode.

GXV3615WP_HD Series DDNS Page

Dynamic DNS provides devices that have a variable, often changing IP address with a well known hostname resolvable by network applications through standard DNS queries.

Set up DDNS

1. Apply for a domain name from your service provider.
2. Login to the web configuration page, click **Basic Settings** > **DDNS**.
3. Enter the required information

DDNS Active – If you want to use DDNS, please set this field to “Enabled” .

DDNS ISP Type – Select your DDNS ISP Type.

Self-Define DDNS Address – Self-define the DDNS server instead of using DDNS ISP Type.

Site Name – The DDNS name for your device.

DDNS Account/ DDNS Password – The account and password from the DDNS Provider.

STUN Server – If the device is behind a router, a STUN server is needed to help penetrate the NAT.

4. Click **Save** to save the changes. You might need to reboot the device to apply all the changes.

GXV3615WP_HD Series SIP Page

The GXV3615WP_HD has the ability to receive phone calls and make phone calls when an alarm event is triggered through motion detection or alarm input. Register the GXV3615WP_HD to a SIP server to enable the product to make and receive phone calls. To make outgoing phone calls out, the user needs to configure the **Phone List** properly.

Register GXV3615WP_HD to a SIP Server

1. From the GXV3615WP_HD home page, click **Basic Settings** > **SIP**.
2. Go to **SIP Settings** Tab.
3. General Phone Settings.

Registered – The field shows the registration status of the account with the SIP server.

Unregister On Reboot – If it’s checked, the SIP user’s registration information will be cleared from the server when the phone reboots.

4. Enter the required information.

Account Name – The field configures the SIP account name.

SIP Server – The SIP Server’s IP address or Domain name provided by your service provider.

Outbound Proxy – The IP address or Domain name of the Outbound Proxy, Media Gateway, or Session Border Controller. Used for firewall or NAT penetration in different

network environments. If the system detects a symmetric NAT, STUN will not work. ONLY outbound proxies can provide a solution for a symmetric NAT.

SIP User ID – User account information provided by your service provider (ITSP); this is either an actual phone number or is formatted like one.

Authenticate ID – The SIP service subscriber's Authenticate ID used for authentication. It can be identical to or different from the SIP User ID.

Authenticate Password – The SIP service subscriber's account password for the GXV to register to the SIP server of the ITSP.

STUN Server – If the device is behind a router, a STUN server is needed to help penetrate the NAT.

Stream – To choose between Primary and Secondary stream.

Preferred Vocoder – To choose different Vocoder type.

Registration Expiration – This parameter allows users to specify the time frequency (in minutes) in which the GXV refreshes its registration with the specified registrar. The default interval is 60 minutes.

Local SIP Port – This parameter defines the local SIP port used to listen and transmit. The default value is 5060.

Local RTP Port – This parameter defines the local RTP-RTCP port pair that is used to listen and transmit. The default value is 5004.

5. Click **Save** to save all the changes. You need to restart the device to apply all changes.

SIP Settings

Account Name: ⓘ

SIP Server: ⓘ

Outbound Proxy: ⓘ

SIP User ID: ⓘ

Authenticate ID: ⓘ

Authenticate Password: ⓘ

STUN Server: ⓘ

Stream: ⌵

Preferred Vocoder: ⌵

Register Expiration(Second): ⓘ

local SIP Port: ⓘ

local RTP Port: ⓘ

Note: You must restart the device to apply the changes.

Configure **Phone List**

To make sure the GXV3615WP_HD can make phone calls to the number you preferred when alarm is triggered. You need to add number to the phone list.

Steps to add phone number:

1. From the GXV3615WP_HD home page, click **Basic Settings > SIP**.
2. Go to **Phone List** Tab.
3. Enter the **Phone number** and **name**, click **Add a Number to** save all the changes.
4. Numbers added to the system will be listed in this page.

Phone List

Phone Number	Remark Name	Remove
<input style="width: 100%;" type="text"/>	<input style="width: 100%;" type="text"/>	<input type="button" value="Add"/>
123456789	John Smith	<input type="checkbox"/>
	<input type="checkbox"/> Check All	<input type="button" value="Remove"/>

Note: You must restart the device to apply the changes.

Available phone numbers

NOTE: With current firmware, only the first phone number in the list will be called when an alarm is triggered.

GXV3615WP_HD Series Status Page

System Statistics

System Statistics lists hardware and software information, for example, the part number, the software version, about the GXV3615WP_HD.

Hardware Version – This field contains the product’s hardware information.

Part Number – This field contains the product part number information.

Bootloader Version – Bootloader code version number.

Core Version – Core code version number.

Base Version – Base code version number.

Firmware Version – Firmware code version number.

System Up Time Since – This field shows the system up time since the last reboot.

System Statistics	
Product Model:	GXV3615
Hardware Version:	V0.2A
Part Number:	9670001702A
Bootloader Version:	1.0.0.0
Core Version:	1.0.4.2
Base Version:	1.0.4.8
Firmware Version:	1.0.4.8
System Up Time Since:	3 minutes

Network Status

MAC Address – The device ID, in HEXADECIMAL format.

LAN IP Address – This field shows the LAN IP address of the GXV3615WP_HD.

LAN Subnet Mask – This field shows the LAN subnet mask of the GXV3615WP_HD.

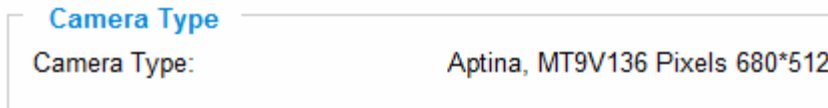
LAN Default Gateway – This field shows the LAN default gateway of the GXV3615WP_HD.

Network Status	
MAC Address:	00:0B:82:1F:96:E9
LAN IP Address:	192.168.40.191
LAN Subnet Mask:	255.255.255.0
LAN Default Gateway:	192.168.40.1
DDNS Status:	Disabled
Wifi Status:	Disconnected

DDNS Status – This field shows the status of DDNS.

Camera Type

This section shows the Lens information of GXV3615WP_HD. The Lens type information contains the brand name, the size of image sensor, the resolution and so on.



GXV3615WP_HD Series User Management Page

All current users will be list in the User List section of this page. You can also add and remove users here.

Existing User Name –The field lists all of the current users. You can insert or remove users from the list by click on the **Add** or **Update** or **Delete** button.

A screenshot of the 'Manage User' form. It includes the following fields and controls:

- Existing User Name:** A dropdown menu with the option '--Add New User--' selected.
- User Name:** A text input field.
- User Password:** A text input field with a small 'i' icon to its right.
- Confirm User Password:** A text input field.
- Privilege:** A dropdown menu with 'Administrator' selected.
- Allow Anonymous Viewing:** A checkbox that is checked.
- On the right side, there are four buttons: 'Add', 'Update', 'Delete', and 'Save'.

User Name / Password – The user name and password required to login.

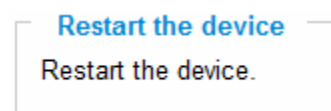
Privilege – The privilege for the user to access to configuration page.

Allow Anonymous Login – If 'Allow Anonymous Login' is set to Yes, no user name and password are required to login to the GXV3615WP_HD web configuration pages. If you login anonymously, you will not be able to change any settings.

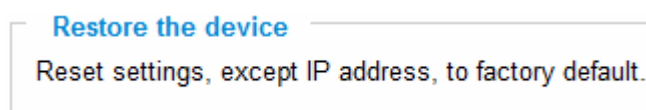
GXV3615WP_HD Series Maintenance Page

Server Maintenance

Restart – Click this button to restart the GXV3615WP_HD.



Restore – Click this button to perform a partial factory reset (The IP address will not be cleared) .



Firmware Upgrade and Provisioning Items

Upgrade via – This field lets you choose the firmware upgrade method. The GXV3615WP_HD supports HTTP, HTTPS and TFTP.

Firmware Server Path – The IP address or domain name of the firmware server (the location of the firmware files) .

Automatic Upgrade Interval – Enter the frequency (in minutes) in which the HTTP/HTTPS/TFTP server will be checked for new firmware upgrades or configuration changes.

Automatic Upgrade – The default setting is “No.” Choose “Yes” to enable automatic HTTP/HTTPS/TFTP upgrade and provisioning. When set to “No”, the IP Camera will only perform a HTTP/HTTPS/TFTP upgrade and perform a configuration check once during the boot process.

Firmware Upgrade and Provisioning

Upgrade via:

Firmware Server Path:

Automatic Upgrade Interval(Minutes):

Automatic Upgrade:

Performing a firmware upgrade:

1. Download the firmware package from <http://www.grandstream.com/firmware.html>.
2. Unzip the firmware package and copy the files to the firmware upgrade server directory.

Upgrades are supported via TFTP, HTTP and HTTPS.

3. Log in to the **Maintenance page** of the GXV3615WP_HD. Select the server type from the dropdown list under the “Upgrade Via” field. Enter your server’s root directory in the “Firmware Server Path” field.
4. Reboot the GXV3615WP_HD to begin the firmware upgrade process.

GXV3615WP_HD Series SMTP Page

The SMTP server is used to send out emails when an alarm event or motion detection is triggered. The SMTP settings must be configured to make sure the alarm email is sent out properly.

SMTP Server Settings

Enable SMTP – Checked to enable SMTP

SMTP Server – The IP or hostname of the SMTP server, for example, smtp.gmail.com.

SMTP Server Port – The port of the SMTP server. The GXV3615WP_HD supports port 25 and SSL port

SMTP Server Settings

Enable SMTP:

SMTP Server:

SMTP Server Port:

From E-Mail address:

To E-Mail address 1:

To E-Mail address 2:

To E-Mail address 3:

User Name:

Password:

SSL: ⓘ

¹ Required Fields.
² Valid DNS server is required for hostname.

465, which is for SMTP with an encrypted connection.

From E-Mail Address – The email address that sends out the alarm email(s).

To E-Mail Address – The email addresses that the alarm email(s) will be sent to. You can have up to 3 emails configured.

User Name/ Password – The user name and password required to log in to your SMTP server, for example, 123@gmail.com/123.

SSL – Checked if the SMTP server requires a secure connection.

Test Email Account Settings – Click the Test button to send a test email from the *From E-Mail* to the *To E-Mail* to make sure that SMTP is configured properly. If the receiver can get the test email, then the SMTP settings are ready to go.

GXV3615WP_HD Series FTP Page

The FTP server is used to store video files if you configure the GXV3615WP_HD to record video and upload it to the FTP server when an alarm event or motion detection is triggered.

FTP Settings

Enable FTP – The default setting is “No,” if you want the GXV3615WP_HD to upload the recorded video to the FTP server when an alarm is triggered, set this field to “Yes.”

FTP Server – The IP address or hostname of the SMTP server, ie. ftp.myserver.com.

FTP Server Port – The port that your FTP server is using.

User Name / Password – The user name and password required to log into your FTP server

Path – The directory in the FTP server where recorded video will be uploaded.

Test FTP Account Settings – Click the Test button to upload a sample file to make sure that FTP is properly configured.

FTP Settings

Enable FTP:

FTP Server:

FTP Server Port:

User Name:

Password:

Path:

Valid DNS server is required for hostname.

GXV3615WP_HD Series Motion Detection Page

The GXV3615WP_HD supports Motion Detection. To utilize this feature, please follow the below steps:

1. Setup the motion detection monitored area.
2. Configure the motion detection time schedule.
3. Configure alarm action properly.

Setup Motion Detection Monitored Area

Enable Motion Detection – If this option is selected, motion detection will be enabled. If something/somebody moves in the motion detection region, an alarm will be triggered.

Show Motion Detection Regions – If this option is selected, the motion detection regions will be displayed on the screen with a white border.



The white border for Motion Detection Regions

NOTE: If **Upload to Alarm center** is checked for **Alarm Actions**, the white border will **flash red** when a motion detection alarm is triggered.

To Edit a Monitored Area

1. In the **Select a Region** dropdown list, select the region ID.
2. Click **Edit**.
3. Click on the video, drag and draw your preferred area.
4. Set the Sensitivity. Click the **Save** button to save the sensitivity.

NOTE: The Sensitivity value varies from 0 to 100. The larger the value is, the higher the sensitivity.

5. Click **Save** to save the settings.

Motion Detection Region Settings

Enable Motion Detection

Show Motion Detection Regions

0 Select a Region

50 Sensitivity

Button to save sensitivity only

To Remove a Monitored Area

1. In the **Select a Region** dropdown list, select the region you would like to remove.
2. Click **Remove**.
3. Click **Save** to save the changes.

Configure Motion Detection & Alarm Actions

An alarm action is what the GXV3615WP_HD is going to do when an alarm is triggered during the defined time period – the time schedule. The

Alarm Action

Record Video From Pre Alarm 0 seconds to After Alarm 10 seconds

Voice Alarm to SIP Phone

Alarm Output

Upload to Alarm Center

Email JPEG and Store it to USB card or SD drive

GXV3615WP_HD allows multiple alarm actions.

Configure Motion Detection Time Schedule

This section allows you to configure the time during which the GXV3615WP_HD will monitor the motion detection. The GXV3615WP_HD not only can monitor your settings but also can take actions when the alarm is triggered.

Monitored region Dropdown list for date Available time schedules

Region ID	Date	Start Time	End Time	
3	Thursday	00:00	23:59	<input type="button" value="Add"/>
0	Monday	00:00	23:59	<input type="checkbox"/>
1	Tuesday	00:00	23:59	<input type="checkbox"/>
3	Thursday	00:00	23:59	<input type="checkbox"/>

Check All

GXV3615WP_HD Series System Log

This page is used to set up the system log server path and system log level. Once they are correctly configured, the device will send out system log messages to the system log server, which will help perform troubleshooting.

Syslog Server – The IP address or URL of System log server.

Syslog Level – Select the device to report the log level. Default is None. The level is one of Debug, Info, Warning or Error.

SystemLog Settings

Syslog Server:

Syslog Level:

- None
- Debug
- Info
- Warning
- Error

IP VIDEO SURVEILLANCE FAQ

1. What is the default IP address of GXV3601/3501/3504?

Prior to firmware version 1.0.3.9, the IP address of GXV3501/ 3504/ 3601/ 3611 is 192.168.1.168 at the factory default settings. You can perform a factory reset by pressing the RESET button on the device for 7 seconds. Starting from firmware version 1.0.3.9, the default IP configuration is DHCP.

2. Why can I not view the live video stream in Microsoft Internet Explorer?

Please check whether the IE add-on is installed correctly.

Once you log into the GXV3501/ 3504 / 3601 / 3615's web interface Internet Explorer will indicate that "This website wants to install to following add-on: 'GSViewer. cab' from Grandstream Networks, Inc.". Please install this add-on when prompted by IE.

3. How do you manually uninstall the Grandstream video viewer add-on for IE?

Please follow these steps to uninstall the add-on:

1. Delete the *GSViewerX Control* from *C:\WINDOWS\Downloaded Program Files* directory
2. Delete *GSNetClient.dll*, *GS_Replay.exe*, *GSViewerX.ocx*, *hi_h264dec_w.dll*, *lik_VoiceEngine_dll.dll* and *GSViewerX.inf* from *C:\WINDOWS\system32*

4. Why can't I access the GXV3501/ 3504/ 3601/ 3615 web configuration interface?

Q 1: Is your internet service down?

A 1: Connect a PC to the internet to test the connection.

Q 2: Are the PC and the device in different subnets?

A 2: Check the subnet mask and default gateway of the device and PC.

Q 3: Is there a conflict with another IP address?

A 3: Try to change the IP address of the device.

Q 4: Has the HTTP port been changed?

A 4: Contact the administrator of the device for more information.

5. The GXV3501/ 3504/ 3601/ 3615 web configuration page is not displayed correctly in Internet Explorer 8?

In IE8, Compatibility View might need to be enabled for the GXV3501/ 3504/ 3601 web configuration page to load properly. To enable compatibility view, open IE8, click *Tools*, *Compatibility View Setting*, and add the GXV3501/ 3504/ 3601 web configuration pages to the Compatibility View.

6. Why does IE indicate to install Grandstream Video Viewer add-on after a firmware upgrade? The add-on was properly installed before the firmware upgrade process.

New firmware will often upgrade the add-on as well. To watch the live video stream, you must install the newest version of the add-on.

7. How do you watch secondary video stream?

Login to the home page of the GXV3501/ 3504/ 3601/ 3615 web GUI, click Play to watch the video stream. To watch a secondary video stream, right click on the video, and select *Secondary Stream* on the pop-up menu. Try reinstalling the Grandstream Viewer add-on for IE if you cannot see the video stream.

8. Why is audio missing from the recorded video when an alarm is triggered?

Please double check whether the device has an audio input connected.

The GXV3504 has 4 audio input ports and one MIC IN port. The GXV3501 has a MIC IN port for an audio input. The GXV3601 has a built-in microphone and one MIC IN port for audio inputs.

9. What is DDNS? Is it important for IP surveillance product to have DDNS support?

DDNS is an acronym for Dynamic Domain Name Service. It is important to choose an IP network camera that has DDNS support for dynamic IP addresses.

Chances are that the network has a dynamic IP address (which changes with every log on). A DDNS service makes sure that the camera's IP address always matches up to the current server address. DDNS also allows for a website to be linked to the IP camera that is constantly updated with the correct information and has a reliable feed.

10. Why is Windows Media Player unable to play the recorded videos files?

The GXV3501/3601/3504 all use the H.264 video codec. Windows Media Player may lack the proper H.264 decoder to play the recorded video. Please download the Microsoft FFDSHOW H.264 decoder from <http://sourceforge.net/projects/ffdshow-tryout/> and install it.

11. Alarm Triggered Events do not work in GSurf.

Please double check the Alarm Action on your GXV3501/ 3504/ 3601. Login to the web GUI of the GXV3501/ 3504/ 3601, go to the *Motion Detection* or *Alarm Events* page, and make sure option *Upload to Alarm Center* is checked.

12. It is recommended that you save your video files in different directories when using GSurf and GS_NVR.

GSurf and GS_NVR are different programs that have the ability to delete recorded video files. It is better to save video files in different directories when using GSurf and GS_NVR in the event that they automatically delete files that you might want to keep.

13. How can I use a cell phone to watch the GXV3501/ 3504/ 3601/ 3615 video stream?

You must set the video resolution to QCIF to watch the GXV3501/3504 /3601 video stream from a cell phone. Make sure to set the bit rate to 64kbps to ensure the best video quality.

14. Why doesn't the IP address of the device reset when I click the "Restore" button on the Maintenance page?

The GXV3501 /3504 /3601 could be installed in areas that are not easy to access. For example, it could be installed on the roof of a building or the ceiling of an office. This makes it difficult to reinstall the device, therefore the "Restore" function will not clear the IP address. Press the RESET button on the device for at least 6 seconds until you hear a beep to perform a factory reset of all parameters (including the IP address).

15. Why can't the live video stream be viewed using a mobile phone or GSurf after changing the HTTP Port of the device?

Make sure that the RTSP port of the device is set to 2000 plus the HTTP Port number. For example, if the HTTP port is 88, then the RTSP port of the device that you configured on GSurf / mobile phone should be 2088.

16. Some notes on using SD cards / USB drives.

1. The GXV3501/ 3504/ 3601 only supports FAT32 formatted USB drives
2. The GXV3501/ 3504/ 3601 support SD and SDHC
3. It takes 10-15 seconds to read SDHC and USB drives with large memory capacities. Please wait 15 seconds to unplug the SD/USB drive after you plug them into the device.
4. If there are many files (ie. 1800 or more image batch files) on the SD/USB drive, it can take up to 5 minutes to read them. Please do not refresh the web interface at this time as the GXV3501/3504 will restart reading the SD/USB drive. Grandstream is currently working on a fix for this issue.

5. Why is there a black / flashing bar at the bottom of the video feed?

This can occur if the GXV3501 /3504 does not recognize the standard of the connected camera. If you experience this issue, please restart the GXV3501 /3504. The GXV3501 /3504 will detect the standard of the connected camera and use it when the GXV3501 /3504 boots up. To avoid this make sure to connect analog cameras before booting up the GXV3501 /3504.

6. Port forwarding

Two ports must be forwarded on your router to watch video from a GXV3501 /3504 /3601/3611/ 3615 that is located on a private network from a PC in a public network. The web port (HTTP) and the RTSP port. Please make note that the RTSP port number changes according to the web port. If the web port is 80, then the RTSP port is 554. If the web port is not 80, then the RTSP port equals the web port +2000. For example, if the web port is 88, then the RTSP port will be 2088.

7. Tested PC display adapters.

<i>Display Adapter</i>	<i>Test Result</i>
SiS 650/651/740/661 FX/741/760 Series	Works normally
Intel(R) 82945R Express Chipset Family	Works normally
VIA/S3G UniChrome Pro IGP	Works normally
NIVDIA Geforce 7300GS	Works normally
SiS 661FX	Works normally
SiS Mirage Graphics	Works normally
SiS 661 Series	Works normally
Intel(R) G33/G31 Express	Works normally
SiS Mirage3 Graphics	Works normally
SiS 661FX/GX Mirage Graphics	Works normally
S3 Graphics ProSavageDDR(Microsoft Corporation)	Works normally
XGI Velari Z7/Z9/Z9S V1.08.12	There is some delay when playing videos.
Intel 965 Express Chipset Family	Works normally
ATI Mobility Radeon X1300	Works normally
Intel(R) G45/G43 Express Chipset	Works normally
Mobile Intel 965 Express Chipset Family	Works normally
Mobile Intel(R) 4 Series Express Chipset Family	Works normally
Mobile Intel® 945GM Express Chipset Family	Works normally
Mobile intel® 915GM/GMS, 910GML Express Chipset Family	Works normally
Intel® G45/G43 Express Chipset	Works normally
ATI Technologies, RAGE XL PCI	This display adapter cannot display videos.

FCC Warning



This device complies with part 15 of the FCC Rules. Operation is subject to the following two conditions:

(1) This device may not cause harmful interference, and (2) this device must accept any interference received, including interference that may cause undesired operation.

Any Changes or modifications not expressly approved by the party responsible for compliance could void the user's authority to operate the equipment.

RF

This equipment complies with FCC's and IC's RF radiation exposure limits set forth for an uncontrolled environment. The antenna(s) used for this transmitter must be installed and operated to provide a separation distance of at least 20 cm from all persons and must not be collocated or operating in conjunction with any other antenna or transmitter. Installers must ensure that 20cm separation distance will be maintained between the device (excluding its handset) and users.

15.105B

For a Class B digital device or peripheral, the instructions furnished the user shall include the following or similar statement, placed in a prominent location in the text of the manual:

Note: This equipment has been tested and found to comply with the limits for a Class B digital device, pursuant to part 15 of the FCC Rules. These limits are designed to provide reasonable protection against harmful interference in a residential installation. This equipment generates, uses and can radiate radio frequency energy and, if not installed and used in accordance with the instructions, may cause harmful interference to radio communications. However, there is no guarantee that interference will not occur in a particular installation. If this equipment does cause harmful interference to radio or television reception, which can be determined by turning the equipment off and on, the user is encouraged to try to correct the interference by one or more of the following measures:

- Reorient or relocate the receiving antenna.
- Increase the separation between the equipment and receiver.
- Connect the equipment into an outlet on a circuit different from that to which the receiver is connected.
- Consult the dealer or an experienced radio/TV technician for help.

15.21 Statement:

Information to user: the user's manual or instruction manual for an intentional or unintentional radiator shall caution the user that changes or modifications not expressly approved by the party responsible for compliance could void a sample statement is below:

Note: The manufacturer is not responsible for any radio or TV interference caused by unauthorized modifications to this equipment. Such modifications could void the user's authority to operate the equipment.

Hereby, Grandstream Networks, Inc. declares that this IP Camera is in compliance with the essential requirements and other relevant provisions of Directive 1999/5/EC.

Declaration of conformity

We Grandstream Networks, Inc declares under our own responsibility that the

product IP Camera (model name: GXV3615WP_HD/GXV3615W_HD/GXV3615P_HD/
GXV3615_HD) satisfies all the technical

relations application to the product within the scope of council:

Directives

The above product is in conformity with the following standards or other normative
documents

ETSI EN 300 328 V1.71 (2006-10)

ETSI EN 301 489-1 V1.8.1 (2008-04)

ETSI EN 301 489-17 V2.1.1(2009-08)
EN 60950-1: 2006+A11:2009+A1:2010

Directives 2004/108/EC

The above product is in conformity with the following standards or other normative
documents

EN 55022:2006 +A1:2007

EN 55024:1998 +A1:2001 +A2:2003

The antenna(s) used for this transmitter must be installed to provide a separation distance of at least 20 cm from all persons and must not be co-located or operating in conjunction with any other antenna or transmitter.