



ZT

Parts Manual

Models

915146 – ZT 34
915148 – ZT 42
915150 – ZT 50
915168 – ZT 34 CARB
915170 – ZT 42 CARB



Gasoline containing up to 10% ethanol (E10) or up to 10% MTBE (methyl tertiary butyl ether) is acceptable for use in this machine. The use of any gasoline exceeding 10% ethanol (E10) or 10% MTBE will void the product warranty.

Il est possible d'utiliser de l'essence contenant jusqu'à 10% d'éthanol (E10) ou 10% de MTBE (éther méthyl-tertiobutylique) sur cette machine. L'utilisation d'une essence contenant plus de 10% d'éthanol (E10) ou de 10% de MTBE annulent la garantie.

En esta máquina puede utilizarse gasolina con hasta un 10% de etanol (E10) o hasta un 10% de MTBE (éter de metil butil terciario). El uso de cualquier otro tipo de gasolina con un porcentaje superior al 10% de etanol (E10) o al 10% de MTBE invalidará la garantía del producto.

THE MANUAL

Before you operate your unit, carefully and completely read manuals supplied with the unit. The contents will provide you with an understanding of safety instructions and controls during normal operation and maintenance.

For your safety and the safety of others always read, understand, and follow all DANGER, WARNING, and CAUTION messages found in manuals and on safety decals.

Hardware descriptions are given in decimals.

Decimals to Fractions			
.063	1/16	.563	9/16
.125	1/8	.625	5/8
.188	3/16	.688	11/16
.250	1/4	.750	3/4
.313	5/16	.813	13/16
.375	3/8	.875	7/8
.438	7/16	.938	15/16
.500	1/2	1.00	1

SERVICE AND REPLACEMENT PARTS

When ordering replacement parts or making service inquiries, know the Model and Serial numbers of your unit and engine.

Numbers are located on the product registration card in the unit literature package. They are printed on a serial number label, located on the frame of your unit.

- Record Unit Model and Serial numbers here:

- Record Engine Model and Serial numbers here:

UNAUTHORIZED REPLACEMENT PARTS

Use only Gravelly replacement parts. The replacement of any part on this vehicle with anything other than a Gravelly authorized replacement part may adversely affect the performance, durability, or safety of this unit and may void the warranty. Gravelly disclaims liability for any claims or damages, whether warranty, property damage, personal injury or death arising out of the use of unauthorized replacement parts.

PRODUCT REGISTRATION

The Gravelly dealer must register the product at the time of purchase. Registering the product will help the company process warranty claims or contact you with the latest service information. All claims meeting requirements during the limited warranty period will be honored, whether or not the product registration card is returned. Keep a proof of purchase if you do not register your unit.

Customer Note: If Dealer does not register your product, please fill out, sign and return the product registration card to Gravelly or go to www.gravelly.com.

YOUR SATISFACTION IS IMPORTANT

Questions? Please follow these helpful steps:

1. Refer to the manuals supplied with your unit.
They will guide you through safe and proper operation and maintenance.
They contain specifications on your unit.
If your questions are not answered in these manuals, go to step number two.
2. Contact Your Dealer.
Our dealers will be happy to supply any service or advice required to keep your unit operating at peak efficiency.
A factory trained staff is available to support your equipment needs. They stock genuine Gravelly parts and lubricants manufactured with the same precision and skill as the original.
If your questions are not resolved by the support staff, ask for the manager or owner.
When contacting your Dealer supply your model and serial numbers.

TO SPEED PARTS ORDERING:

1. Know the model and serial numbers of your unit.
2. Know the part number required.
3. Know the quantity required.
4. Know the part description.

MODELS

Domestic

Model 915146 (ZT 34)

Briggs & Stratton with 34" Mower
Serial No. 000101 and up

Model 915148 (ZT 42)

Kohler with 42" Mower
Serial No. 000101 and up

Model 915150 (ZT 50)

Kohler with 50" Mower
Serial No. 000101 and up

Model 915168 (ZT 34 CARB LVE)

Briggs & Stratton with 34" Mower
Serial No. 000101 and up

Model 915170 (ZT 42 CARB LVE)

Kohler with 42" Mower
Serial No. 000101 and up

TABLE OF CONTENTS

DECALS

Decals	4
------------------	---

MAIN FRAME AND TRANSAXLES

Frame, Hood, Fenders, Casters and Tires	6
Seat and Seat Support	10
Transaxle, Dump Valves and Rear Wheels	12

OPERATOR CONTROLS

Parking Brake	14
Steering Controls	16

FUEL TANKS AND ENGINE

Engine, Exhaust, Belts and Idlers	18
Fuel Tank	20

ELECTRICAL SYSTEM

Continuity Diagram	21
Electrical System	22
Wiring Diagram	24

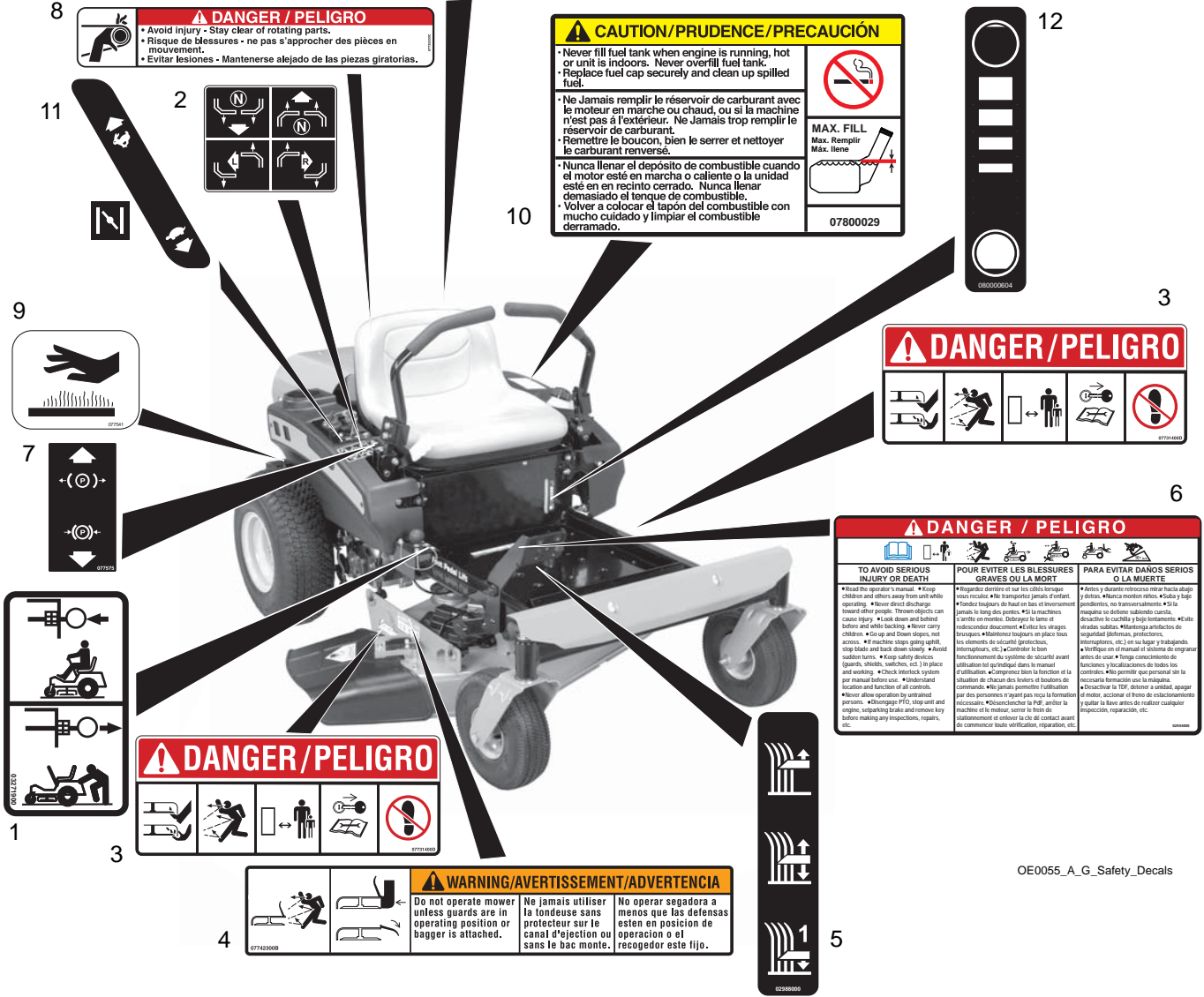
MOWER DECKS

Mower Deck Lift	26
Mower Deck, Belt and Idlers	28
Belt Covers and Blades	32

DECALS – SAFETY

Model 915146, 148, 150, 168, 170

⚠ CAUTION	⚠ PRUDENCE	⚠ PRECAUCIÓN
<ul style="list-style-type: none"> Maximum torque weight: 30 lbs. Maximum trailer weight: 300 lbs. Do not use hitch with bagger attached. Do not park on steep hills or slopes. Do not use with any ground engaging equipment. 	<ul style="list-style-type: none"> Poids maximum du timon: 30 livres. Poids maximum de la remorque: 300 livres. Ne pas utiliser l'attelage lorsque l'ensacheuse est posée. Ne pas utiliser sur les pentes abruptes. Ne pas stationner en pente quand la remorque est attelée. Ne pas utiliser avec un outil s'enfonçant dans le sol. 	<ul style="list-style-type: none"> Peso máximo de la lengüeta: 30 lbs. Peso máximo del remolque: 300 lbs. No usar el enganche con la embosadora acoplada. No usar en colinas o pendientes empinadas. No estacionarse en colinas cuando el remolque está acoplado. No usar con equipo de manipulación del suelo.



Item	Part No.	Qty.	Description
1	03271900	2	Decal, Transmission Disconnect
2	07757600	1	Decal, Instructional Steering
3	07731400	2	Decal, Mower Pan Head Danger
4	07742300	1	Decal, Warning
5	02988000	1	Decal, Cut Height
6	02994800	1	Decal, Bilingual Danger
7	07757500	1	Decal, Parking Brake Lever
8	07735200	1	Decal, Danger
9	07754100	1	Decal, Hot Surface
10	07800029	1	Decal, Fuel Warning
11	05301400	1	Decal, Throttle Control
12	08000604	1	Decal, Fuel Level
13	05305000	1	Decal, Trailer Hitch (915148, 150, 170)

OE0055_A_G_Safety_Decals

DECALS – STYLE

Model 915146, 148, 150, 168, 170

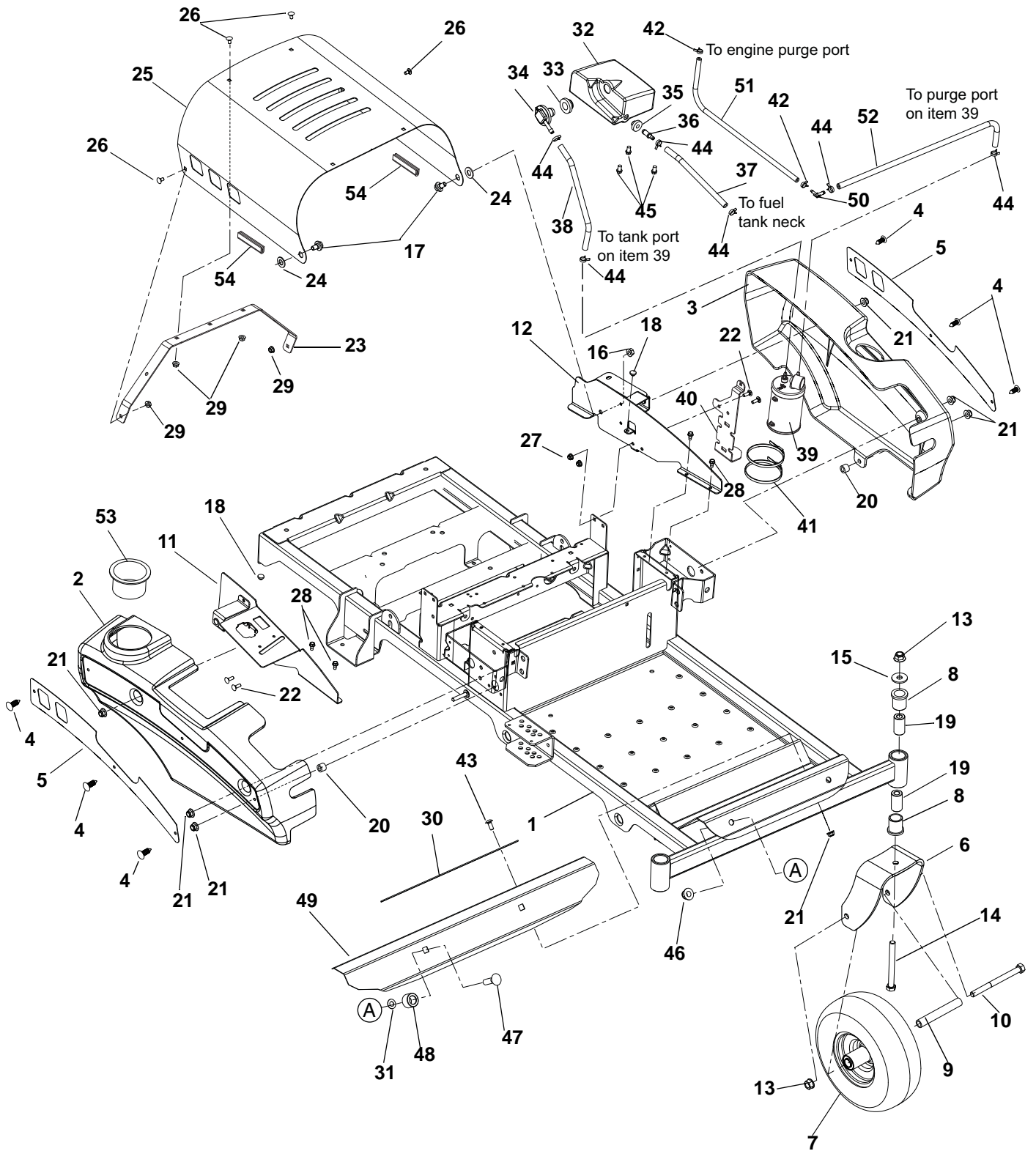


Decal_style_A_G

Item	Part No.	Qty.	Description
1	05239900	2	Decal, 9.5" Gravely
2	07800101	1	Decal, ZT 34 (915146, 168)
	07800210	1	Decal, ZT 42 (915148, 170)
	07800211	1	Decal, ZT 50 (915150)
3	08000526	1	Decal, Gravely Heritage, Large
4	05239800	1	Decal, 6.5" Gravely

FRAME, HOOD, FENDERS, CASTERS AND TIRES

Model 915168, 170



PE1200_A_G_HVZFrame

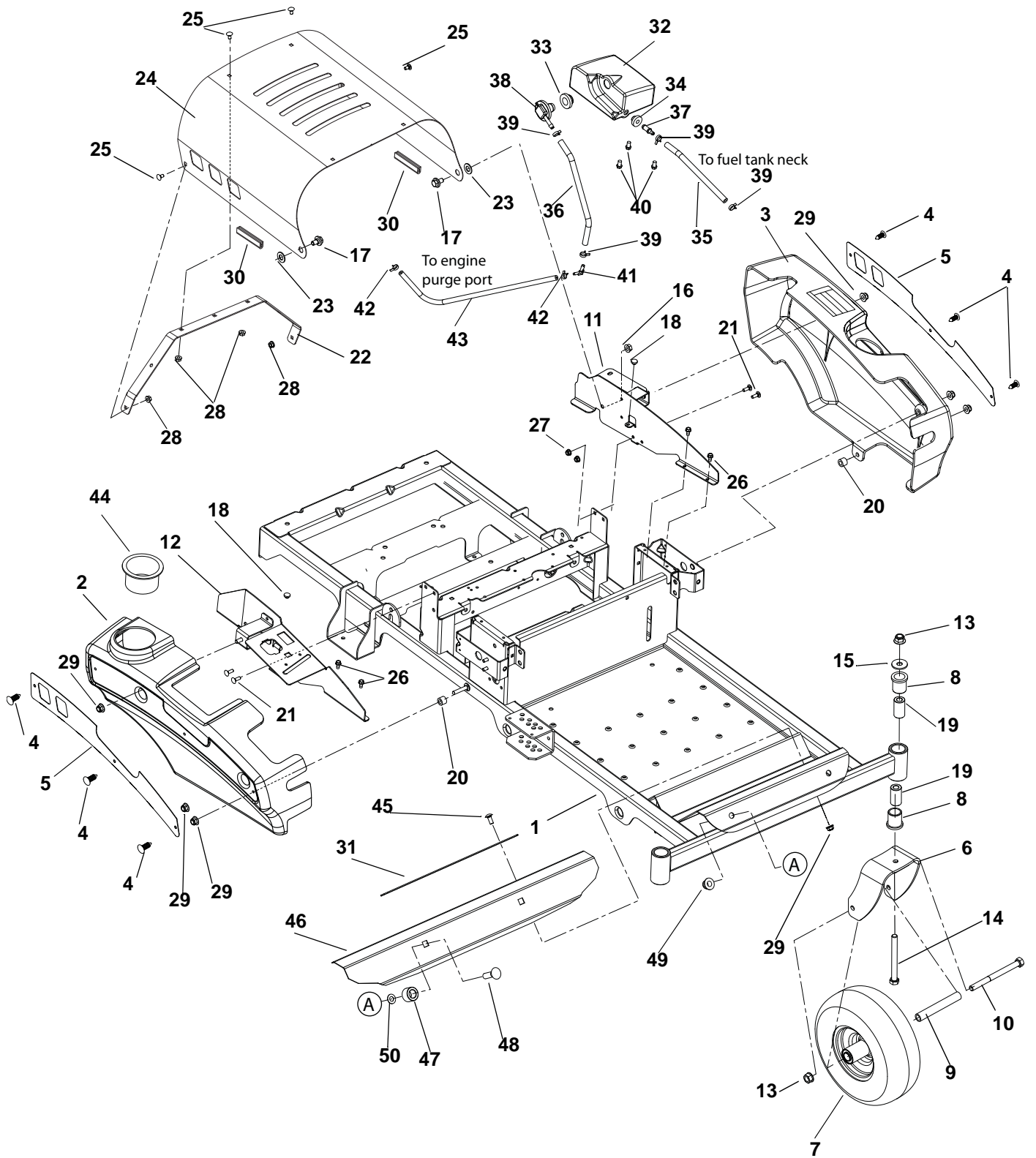
FRAME, HOOD, FENDERS, CASTERS AND TIRES

Model 915168, 170

Item	Part No.	Qty.	Description
1	03896851	1	Weldment, Frame
2	03768600	1	Fender, Right Hand
3	03768700	1	Fender, Left Hand
4	07500125	6	Rivet, Nylon
5	03769053	2	Plate, Fender
6	03368553	2	Fork, Caster
7	07100801	2	Wheel/Tire Assembly, 11.0 x 4.0 x 5.0
8	05500934	4	Bushing, Flange 1.00 x 1.25 x 1.50 x 1.50
9	00278500	2	Spacer, Wheel
10	05964400	2	Bolt, Hex .50-13 x 6.50
11	04194051	1	Weldment, Fender Mount Right Hand
12	04240751	1	Weldment, Fender Mount Left Hand
13	06543600	4	Nut, Locking, Top, Flange .50-13
14	05962200	2	Bolt, Hex .50-13 x 5.00
15	06436400	2	Washer, Flat Steel .511 x 1.441 x .125
16	06542000	4	Nut, Locking, Top, Flange .38-16
17	07056700	2	Bolt, Shoulder .375-16 x .135
18	07503100	2	Bumper Grommet .125 x .250 Diameter
19	00363100	4	Spacer, Caster
20	08553700	2	Bushing, Sleeve .391 x .688 x .52
21	06545400	8	Nut, .31-18 Nyloc Flange
22	06219900	4	Bolt, Round Head Square Neck .25-20 x .75
23	04085753	1	Hood Brace
24	06443300	2	Washer, Flat, Nylon .52 x 1.00 x .08
25	04277453	1	Hood, Zoom
26	06220600	5	Bolt, Round Head Square Neck .25-20 x .50
27	06500012	4	Nut, .25-20 Nyloc Flange
28	07412000	4	Screw, Tapping .25-20 x .50 Hex Washer Head Thread
29	06543500	5	Nut, Locking Top Flange .25-20
30	03833800	2	Grip, Adhesive (1" x 16" BLK)
31	06500705	2	Nut, Push .50
32	04215900	1	Tank, ZT/Waw Fuel Exp.
33	04082700	1	Grommet, Remote Vent Nitrile
34	04246000	1	Vent, Roll-Over (.25" ID Hose)
35	07511400	1	Bushing, Flange .375 x 1.062 x .625 R
36	04182300	1	Fitting, Straight Fuel
37	03278100	7"	Hose, .25 Low-Perm Bulk Gas
38	03278100	10"	Hose, .25 Low-Perm Bulk Gas
39	04082500	1	Carbon Canister, 300CC
40	04086551	1	Bracket, Mount, Canister BBZ
41	04102900	2	Plastic Tie Strap Large
42	04097700	2	Clamp, Hose Spring .188
43	06215700	2	Bolt, Round Head Square Neck .31-18 x .75
44	03278800	6	Clamp, Fuel Line
45	07049500	3	Bolt, Serrated Hex Flange Washer Head .312-18 x .50
46	06500010	2	Nut, Locking Nylon Flange .50-13
47	06224800	2	Bolt, Round Head Square Neck .50-13 x 1.75
48	04192901	2	Tube, Upper Control Pivot
49	04188353	1	Foot Rest
50	04097000	1	Fitting, 3/16 x 1/4 90 Deg Vac
51	03375900	7"	Hose, .188 Low Perm Bulk (915168)
	03375900	11"	Hose, .188 Low Perm Bulk (915170)
52	03278100	27"	Hose, .25 Low Perm Bulk Gas (915168)
		30.5"	Hose, .25 Low Perm Bulk Gas (915170)
53	04196270	1	Cupholder
54	07500103	2	Edging, Clutch Paddle-2.00"

FRAME, HOOD, FENDERS, CASTERS AND TIRES

Model 915146, 148, 150



PE1210_A_G_HVZFrame

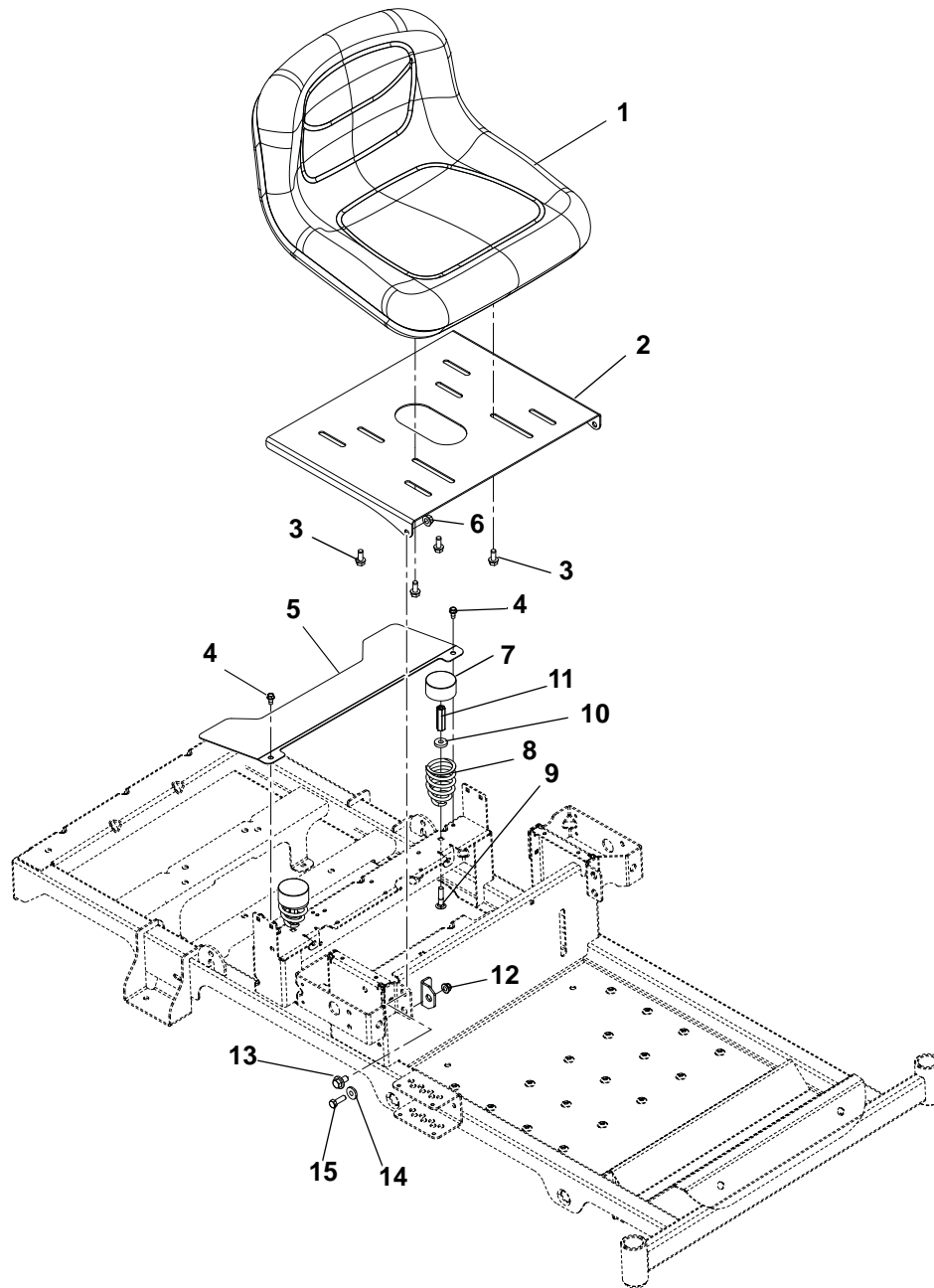
FRAME, HOOD, FENDERS, CASTERS AND TIRES

Model 915146, 148, 150

Item	Part No.	Qty.	Description
1	04282751	1	Weldment, Frame
2	03768600	1	Fender, Right Hand
3	03768700	1	Fender, Left Hand
4	07500125	6	Rivet, Nylon
5	03769053	2	Plate, Fender
6	03368553	2	Fork, Caster
7	07100801	2	Wheel/Tire Assembly, 11.0 x 4.0 x 5.0
8	05500934	4	Bushing, Flange 1.00 x 1.25 x 1.50 x 1.50
9	00278500	2	Spacer, Wheel
10	05964400	2	Bolt, Hex .50-13 x 6.50
11	04240751	1	Weldment, Left Hand Fender Mount
12	04194051	1	Weldment, Right Hand Fender Mount
13	06543600	4	Nut, Locking, Top, Flange .50-13
14	05962200	2	Bolt, Hex .50-13 x 5.00
15	06436400	2	Washer, Flat Steel .511 x 1.441 x .125
16	06542000	4	Nut, Locking, Top, Flange .38-16
17	07056700	2	Bolt, Shoulder .375-16 x .135
18	07503100	2	Bumper Grommet .125 x .250 Diameter
19	00363100	4	Spacer, Caster
20	08553700	2	Bushing, Sleeve .391 x .688 x .52
21	06219900	4	Bolt, Round Head Square Neck .25-20 x .75
22	04085753	1	Hood Brace
23	06443300	2	Washer, Flat, Nylon .52 x 1.00 x .08
24	04277453	1	Hood, ZT
25	03872253	4	Bolt, Round Head Square Neck .25-20 x .50
26	06500012	4	Nut, Locking Top Flange .25-20
27	07412000	4	Screw, Tapping .25-20 x .50 Hex Washer Head Thread
28	06543500	4	Nut, Locking Top Flange .25-20
29	06545400	8	Nut, Locking, Nylon, Flange .31-18
30	07500103	2	Edging, Clutch Paddle - 2.00"
31	03833800	2	Grip, Adhesive (1" x 16" BLK)
32	04215900	1	Tank, ZT/Waw Fuel Exp. (Serial Number 2500 – up)
33	04082700	1	Grommet, Remote Vent Nitrile (Serial Number 2500 – up)
34	07500206	1	Bushing, Flange .375 x 1.062 x .625 (Serial Number 2500 – up)
35	03278100	1	Hose, .25 Low-Perm Bulk Gas (7 inches) (Serial Number 2500 – up)
36	03278100	1	Hose, .25 Low-Perm Bulk Gas (27 inches) (Serial Number 2500 – up)
37	04182300	1	Fitting, Straight Fuel (Serial Number 2500 – up)
38	04246000	1	Vent, Roll-Over (.25" ID Hose) (Serial Number 2500 – up)
39	03278800	6	Clamp, Hose Wire .490/.510 x .116 (Serial Number 2500 – up)
40	07049500	3	Bolt, Serrated Hex Flange Washer Head .312-18 x .50 (Serial Number 2500 – up)
41	04097000	1	Fitting, 3/16 x 1/4 90° Vac (Serial Number 2500 – up)
42	04097700	2	Clamp, Hose, Spring .188 (Serial Number 2500 – up)
43	03375900	1	Hose, .188 Low-Perm Bulk Gas (7 inches) (915146) (Serial Number 2500 – up)
		1	Hose, .188 Low-Perm Bulk Gas (11 inches) (915148, 150) (Serial Number 2500 – up)
44	04192700	1	Cupholder, Snap-In, 3.75 OD
45	06215700	2	Bolt, Round Head Square Neck .31-18 x .75
46	04188353	1	Foot Rest
47	04192901	2	Tube, Upper Control Pivot
48	06224800	2	Bolt, Round Head Square Neck .50-13 x 1.75
49	06500010	2	Nut, Locking Nylon Flange .50-13
50	06500705	2	Nut, Push .50

SEAT AND SEAT SUPPORT

Model 915146, 148, 150, 168, 170



PE1212

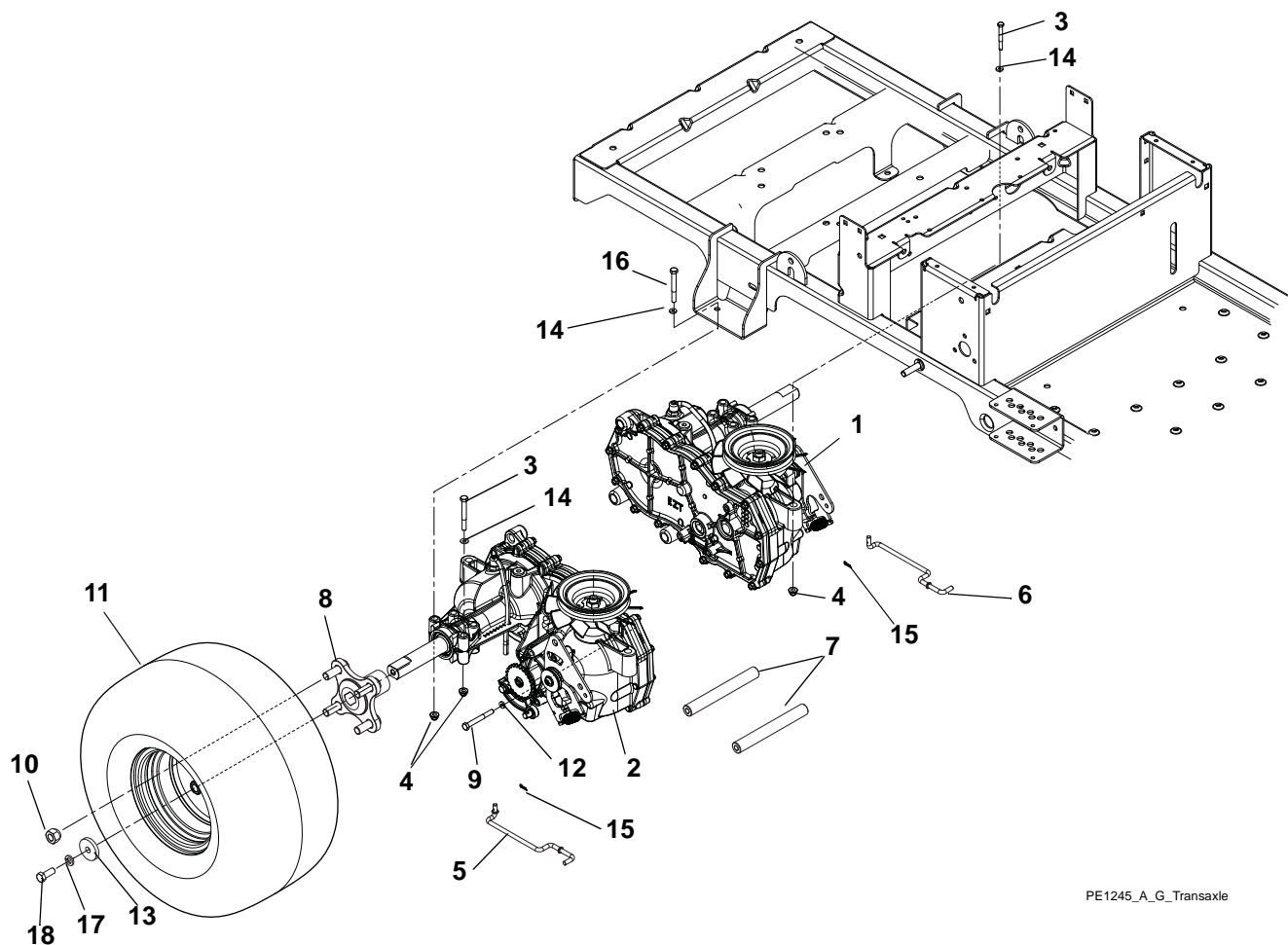
SEAT AND SEAT SUPPORT

Model 915146, 148, 150, 168, 170

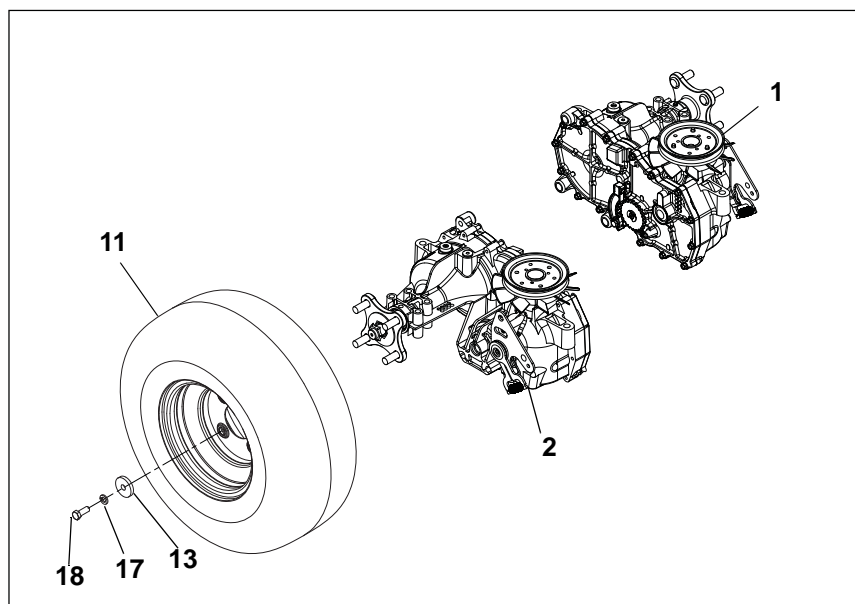
Item	Part No.	Qty.	Description
1	03795800	1	Seat, 13 in Grey (915146, 168)
	04278000	1	Seat, Milsco XB180 Grey (915148, 150, 170)
2	03782051	1	Seat Plate
3	05900033	4	Bolt, Hex 5/16-18 x 3/4
4	07412000	2	Screw, Tapping .25-20 x .50 Hex Washer Head Thread
5	03753351	1	Guard, Fan
6	06542000	2	Nut, .38-16 Locking Top Flange
7	00337700	2	Hub Cap
8	08300021	2	Spring, Seat
9	06212100	2	Bolt, Round Head Square Neck .31-18 x 1.50
10	06439100	2	Washer, Flat, Steel .328 x .87 x .179
11	06500015	2	Nut, Coupling 5/16-18 x 1.75
12	06545400	2	Nut, 5/16-18 Flange Nyloc
13	07056700	2	Bolt, Shoulder .375-16 x .135
14	01305900	2	Bushing, Flange .325 x .499 x .26 x .88
15	05946900	2	Bolt, Hex .31-18 x 1.00

TRANSAXLE, DUMP VALVES AND REAR WHEELS

Model 915146, 148, 150, 168, 170



PE1245_A_G_Transaxle



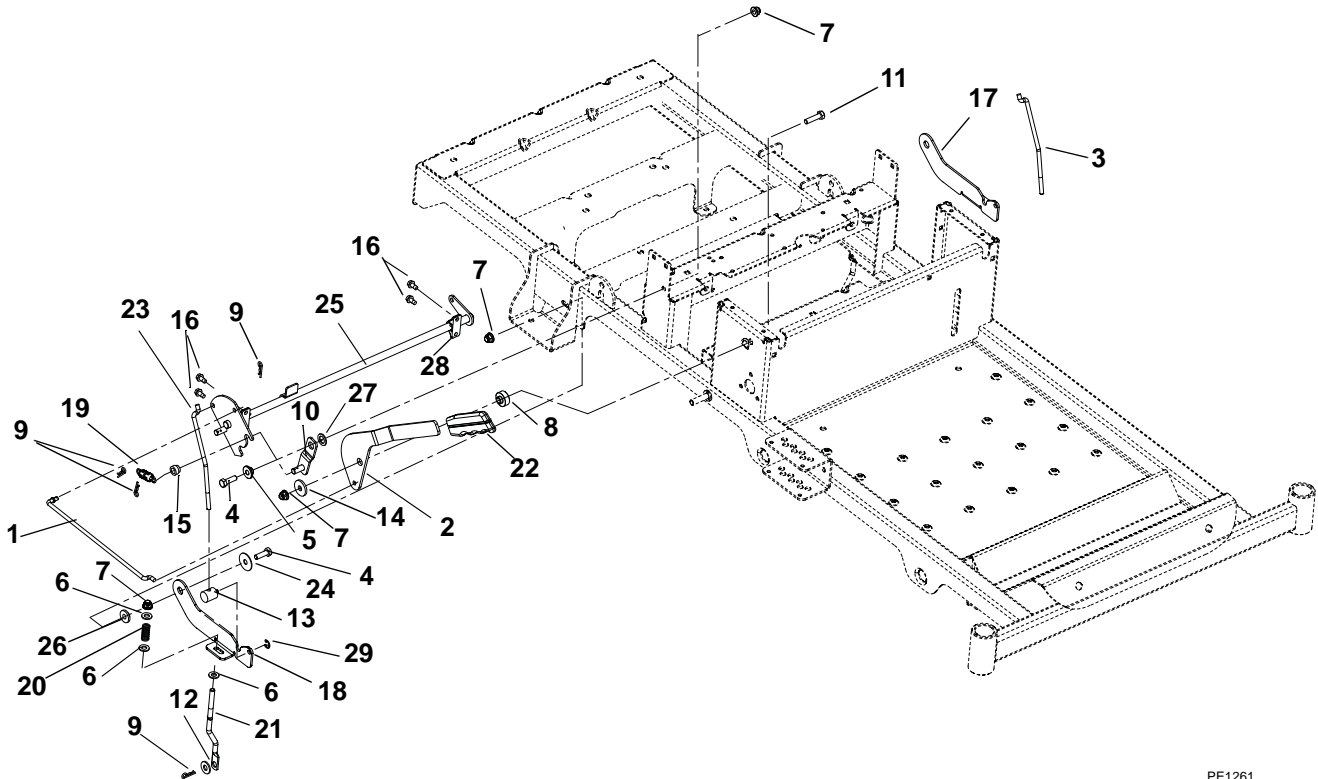
TRANSAXLE, DUMP VALVES AND REAR WHEELS

Model 915146, 148, 150, 168, 170

Item	Part No.	Qty.	Description
1	03872300	1	Transaxle, Left Hand EZT D-Shaft
2	03872400	1	Transaxle, Right Hand EZT D-Shaft
3	05963700	4	Bolt, Hex .31-18 x 2.25
4	06545400	8	Nut 5/16-18 Flange Nyloc
5	03762700	1	Dump Valve, Right Hand
6	03762800	1	Dump Valve, Left Hand
7	03762000	2	Shaft, Cross Brace
8	03958000	2	Assembly, Wheel Hub (915148, 150, 170)
9	05958400	4	Bolt, Hex .38-16 x 2.50
10	06517600	8	Nut, Wheel .50-20 13/16 (915148, 150, 170)
11	07100809	2	Tire Assembly 18 x 6.5-8 2 Pulley DSHAFT (915146, 168)
	07100123	2	Tire/Wheel Assembly, 18 x 8.5-8 Center (915148, 170)
	07100233	2	Tire/Wheel Assembly, 18 x 9.50-8 Offset (915150)
12	06444000	4	Washer, Flat Steel .406 x 1.00 x .188
13	06400006	2	Washer, Flat Steel .406 x 1.50 x .245
14	06435700	8	Washer, Flat, Steel .38 x .875 x .083
15	06701900	2	Pin, Hair, Internal .06 x .18 x .77
16	05960600	4	Bolt, Hex .31-18 x 2.75
17	06308800	2	Washer, Locking .38 x .094 Regular
18	05948700	2	Bolt, Hex .38-16 x 1.00

PARKING BRAKE

Model 915146, 148, 150, 168, 170



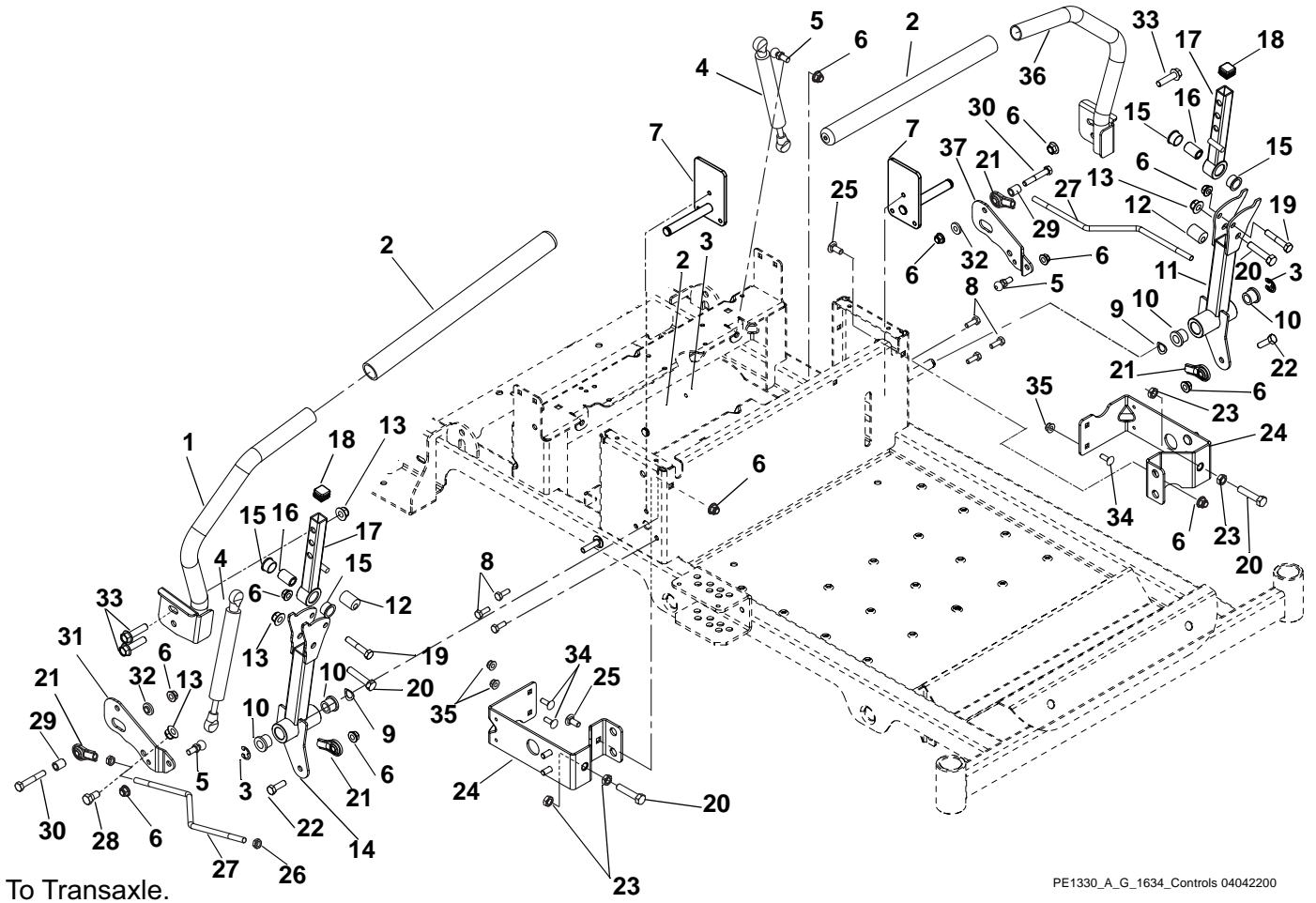
PE1261

Item	Part No.	Qty.	Description
1	03759400	1	Link, Brake Handle
2	03759151	1	Handle, Parking Brake
3	03823300	1	Link, Neutral LH
4	05946900	3	Bolt, Hex .31-18 x 1.00
5	05514800	1	Bushing, Flange .312 x .500 x .344 x .880
6	06437200	6	Washer, Flat, Steel .344 x .688 x .065
7	06545400	6	Nut, Flange Nyloc 5/16-18
8	03769400	1	Spacer, Brake Handle
9	06713500	5	Pin, Hair Internal .08 x .18 x 1.18
10	03759200	1	Weldment, Detent Arm
11	05947500	1	Bolt, Hex .31-18 x 1.25
12	06435700	2	Washer, Flat Steel .38 x .875 x .083
13	03764800	2	Trunnion, 1/4-20
14	06446300	1	Washer, Flat Steel .344 x 1.125 x .135
15	03764900	1	Roller
16	07400034	4	Screw, Tapping .25-20 x .50 Hex Washer Head
17	03759000	1	Latch, LH Neutral
18	03758900	1	Latch, RH Neutral
19	08326700	1	Spring, Tension .072 x .565 x 1.87
20	08300028	2	Spring, Compression
21	03759600	2	Link, Brake Cog
22	03826900	1	Grip, Parking Brake
23	03759500	1	Link, Neutral RH
24	06446900	2	Washer, Flat Steel .347 x 1.254 x .048
25	03761100	1	Weldment, Brake Shaft
26	01305900	2	Bushing, Flange .325 x .499 x .26 x .88
27	06441100	1	Washer, Flat, Steel .52 x .827 x .062
28	03757501	2	Bushing, .50 Clamp Block Molded
29	05700125	2	Ring, Retaining, External .250 x .025

NOTES

STEERING CONTROLS

Model 915146, 148, 150, 168, 170



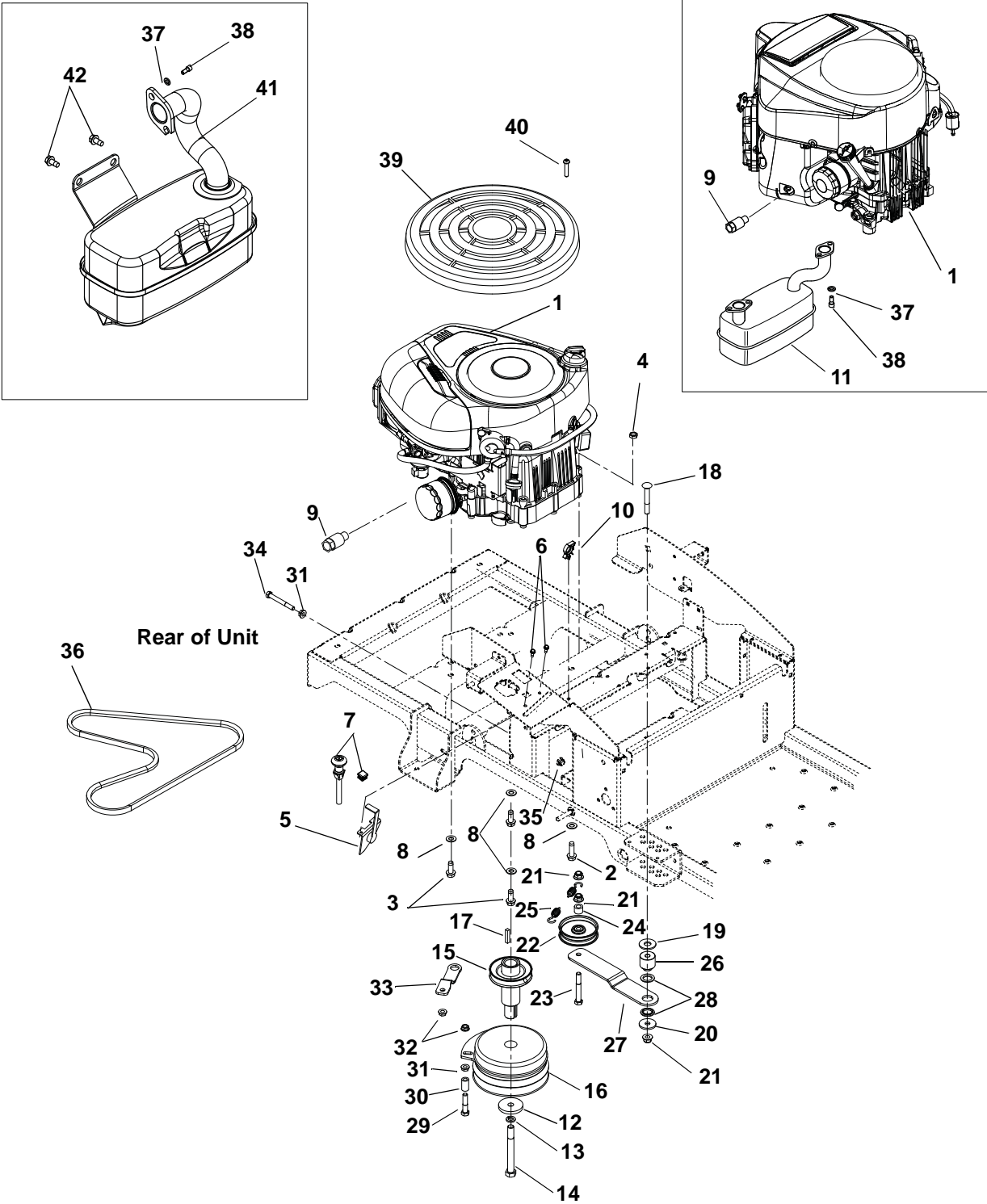
STEERING CONTROLS

Model 915146, 148, 150, 168, 170

Item	Part No.	Qty.	Description
1	04193051	1	Weldment, Steering Handle RH
2	04257400	2	Grip, Handlebar 15" Foam
3	05710200	2	Ring, Retaining External .438 x 1.00 x 0.83
4	03943800	2	Damper
5	03652200	4	Stud, Ball
6	06545400	12	Nut, .31-18 Flange
7	04197651	2	Weldment, Steering Shaft
8	07400034	6	Screw, Tapping .25-20 x .50 Hex Washer Head
9	06400005	2	Washer, Wave
10	05511000	4	Bushing, Flanged
11	04192851	1	Weldment, Lower Control Arm
12	05500932	2	Bushing, Eccentric
13	06545500	8	Nut, .38-16 Nyloc Flange
14	04199451	1	Weldment, Lower Control RH
15	05501017	4	Bushing, Flanged
16	04193500	2	Spacer, .375 x .625 x .970
17	04192951	2	Weldment, Upper Control Arm
18	07500131	2	Cap Plug, Square
19	05957400	2	Bolt, Hex .31-18 x 1.75
20	05974000	4	Bolt, Hex .375-16 x 1.75
21	03787100	4	Alignaball, 5/16 RH Thread
22	05946900	2	Bolt, Hex .31-18 x 1.00
23	06535900	4	Nut, Hex Jam .375-16
24	03956251	2	Bracket, Speed Adjustment/Seat Pivot
25	06220800	2	Bolt, Round Head Square Neck .31-18 x .75
26	06536700	4	Nut, Jam, .31-24
27	04197300	2	Wireform, Steering Link
28	05959400	2	Bolt, Hex .38-16 x .75
29	04208000	2	Spacer, .328 x .500 x .625
30	05957200	2	Bolt, Hex .31-18 x 2.00
31	03759351	1	Plate, Dampener (RH)
32	04147200	2	Bushing, Flanged
33	07001633	4	Bolt, Serrated Head .38-16 x 1.5
34	06219900	4	Bolt, Round Head Square Neck .25-20 x .75
35	06500012	4	Nut, Locking, Nylon, Flange .25-20
36	04199551	1	Weldment, Steering Handle LH
37	03766051	1	Plate, Damper LH

ENGINE, EXHAUST, BELTS AND IDLERS

Model 915146, 148, 150, 168, 170



PE1323_A_G_Engine&Exhaust

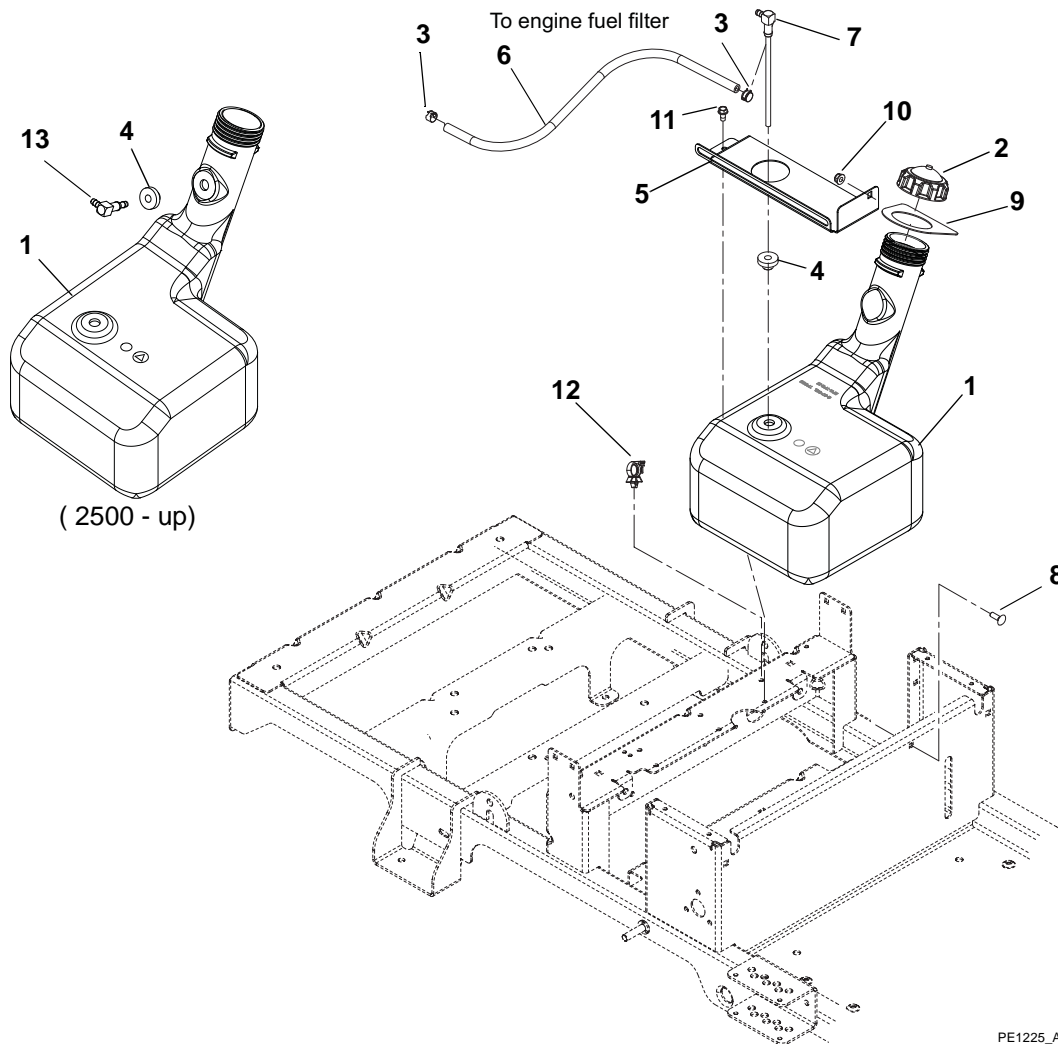
ENGINE, EXHAUST, BELTS AND IDLERS

Model 915146, 148, 150, 168, 170

Item	Part No.	Qty.	Description
1	08200638	1	Engine, 16.5 HP Briggs and Stratton Powerbuilt (915146, 168)
	08200631	1	Engine, Kawasaki FR651V (915148, 170)
	08200523	1	Engine, Kawasaki R691 (915150)
2	07414700	1	Screw, Tapping .38-16 x 1.25 Hex Washer Head (915146, 168)
3	07414100	3	Screw, Tapping .38-16 x 1.00 Hex Washer Head (915146, 168)
	05901507	4	Bolt, Hex .38-16 x 1.25 (915148, 150, 170)
4	06537200	1	Nut, Locking Jam .375-16 (915146, 168)
5	00619600	1	Throttle/Choke Cable (915146, 168)
	06900416	1	Throttle Cable (915148, 150, 170)
6	07415800	2	Screw, Tapping 10-24 x .50 Hex Washer Head
7	07500123	1	Plug, 5/8" Square Black (14-20GA) (915146, 168)
	06900408	1	Cable, Choke (SNAP IN) (915148, 150, 170)
8	06436200	4	Washer, Flat, Steel .406 x .812 x .065
9	03943600	1	Oil Drain
10	00390100	3	Wire Clip (for .25" hole) (915146, 168)
		2	Wire Clip (for .25" hole) (915148, 150, 170)
11	03946900	1	Muffler, Twin (915148, 150, 170)
12	06443600	1	Washer, Flat, Steel .469 x 2.00 x .25
13	06309300	1	Washer, Locking .44 x .109 Regular
14	05966700	1	Bolt, Hex .44-20 x 4.50 Grade 8
15	07333000	1	Weldment, PTO Extension w/Sheave
16	03972700	1	Clutch, 105 FT*LB MONO Pole
17	06603400	1	Key, Square .25 x 1.25 x .25 SAE 8630 or SAE 1035
18	06225400	1	Bolt, Round Head Square Neck .38-16 x 2.75
19	06442000	1	Washer, Flat, Steel .563 x 1.38 x .109
20	06442400	2	Washer, Flat, Steel .406 x 1.375 x .135
21	06545500	3	Nut, Locking, Nylon, Flange .38-16
22	07300221	1	Pulley, Engine Clutch
23	05961400	1	Bolt, Hex .38-16 x 2.75
24	08553700	1	Bushing, Sleeve .391 x .688 x .52
25	08300512	1	Spring, Extension
26	03961100	1	Spacer, Ground Drive Idler
27	03961000	1	Idler Arm, Ground Drive
28	03960700	1	Bushing, Idler Arm
29	05901418	1	Screw, Cap .31-18 x 1.75
30	03980200	1	Spacer, Rubber 5/16 ID x 1.0
31	06530400	2	Nut, Spin Lock, Flange .312-18
32	06543100	2	Nut, Locking, Top, Flange .31-18
33	03956751	1	Bracket, Clutch Stop
34	05960600	1	Bolt, Hex .31-18 x 2.75
35	06545400	1	Nut, Locking, Nylon, Flange .31-18
36	07200010	1	V-Belt, HA-RAW Edge Laminated
37	06308600	4	Washer, Locking .31 x .078 Regular
38	05933100	4	Capscrew .31-18 x .75 S/HD
39	03276500	1	Guard, Briggs Engine (915146, 168)
40	06100206	1	Screw, 8-16 x .87 (915146, 168)
41	04058800	1	Muffler, Briggs and Stratton (915146, 168)
42	07400034	2	Screw, Tapping .25-20 x .50 Hex Washer Head (915146, 168)

FUEL TANK

Model 915146, 148, 150, 168, 170



PE1225_A_G_FuelTank

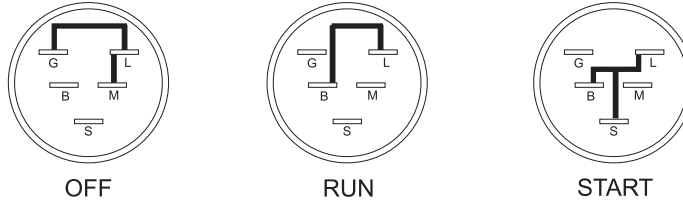
Item	Part No.	Qty.	Description
1	03761700	1	Tank, Fuel (Serial Number 101 – 2499)
	04191900	1	Tank, Fuel 2.5G w/Vent Port (Serial Number 2500 – up)
2	01538400	1	Fuel Cap (Serial Number 101 – 2499)
	04238500	1	Fuel Cap, 225 CARB w/12" THTR (Serial Number 2500 – up)
3	03278800	2	Clamp, Fuel Line
4	07500206	1	Bushing (Serial Number 101 – 2499)
		2	Bushing (Serial Number 2500 – up)
5	03771451	1	Bracket, Tank Strap
6	03278100	NA	Hose, .25 Low Perm Gas (as required)
7	04333600	1	Assembly, Fuel Pickup
8	06219900	1	Bolt, Round Head Square Neck .25-20 x .75
9	03795700	1	Seal, Tank Neck
10	06500012	1	Nut, .25-20 Nyloc Flange
11	07400034	1	Screw, Tapping .25-20 x .50 Hex Washer Head
12	00390100	1	Wire Clip
13	04219300	1	Fitting, 90 Degree Fuel Plastic (Serial Number 2500 – up)

CONTINUITY DIAGRAM

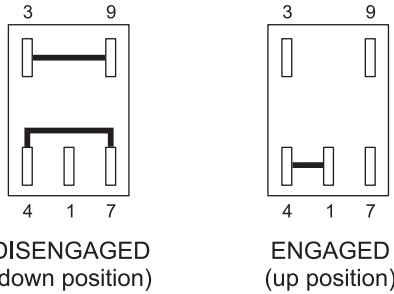
Model 915146, 148, 150, 168, 170

The diagrams below show the various states of connection for electrical components.
The solid lines on switches show continuity.
NOTE: All switches are viewed from the rear.

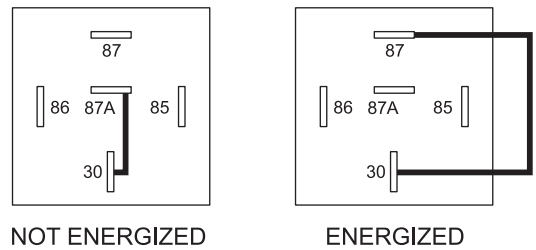
Key Switch (03290500)



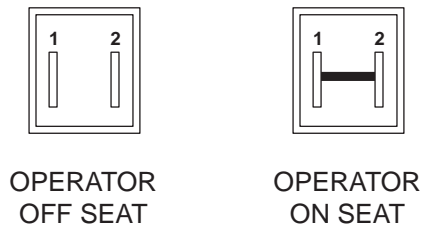
PTO Switch (01545600)



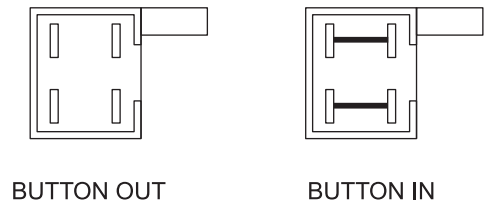
Relay (03042800)



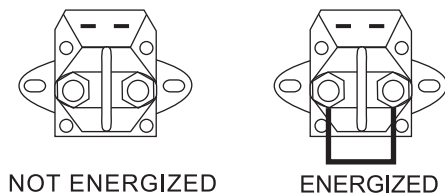
Seat Switch (03654200)



Park Brake Switch (03606600)



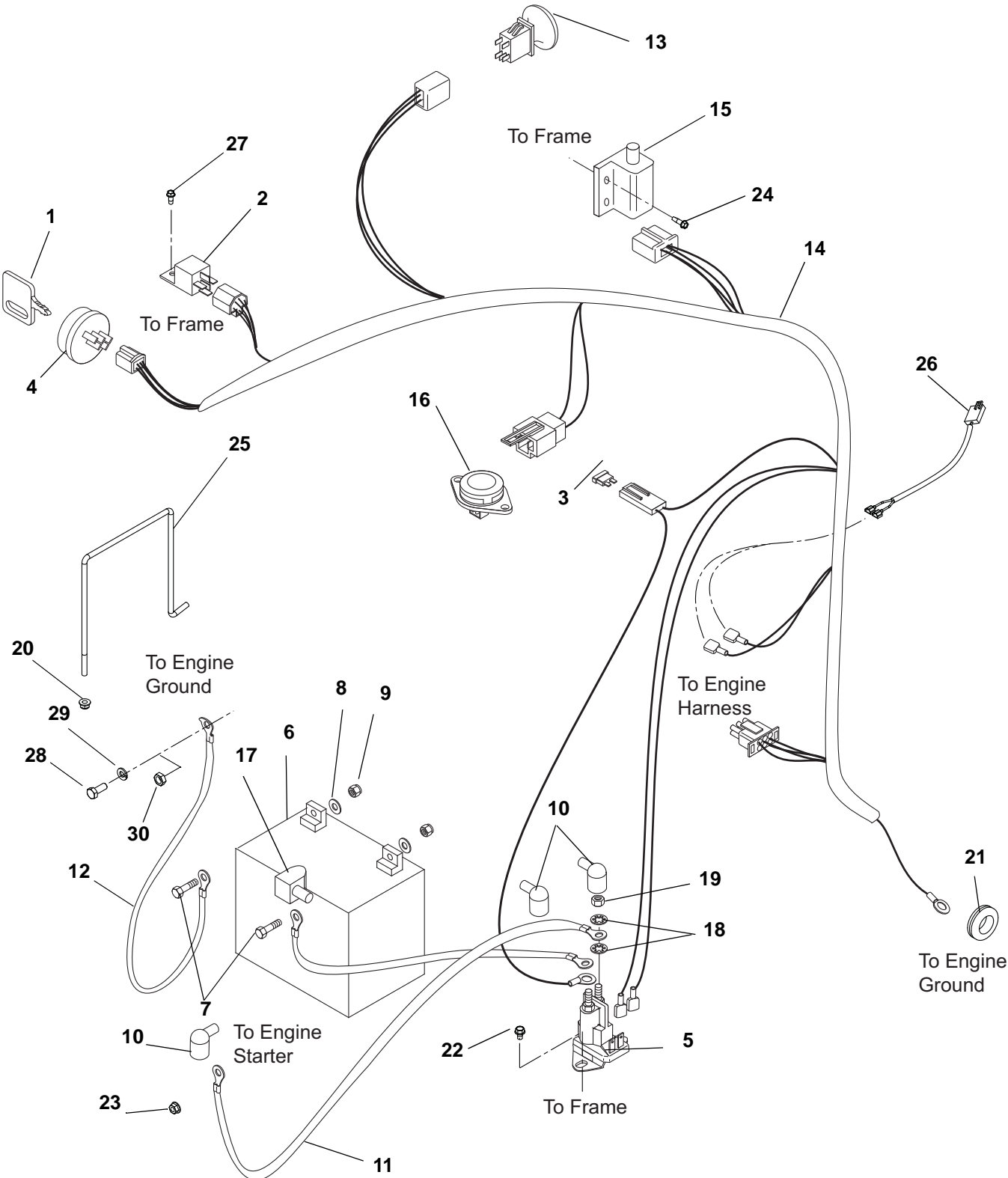
Solenoid (00696900)



PE0771

ELECTRICAL SYSTEM

Model 915146, 148, 150, 168, 170



PE0200_A_G_Electrical

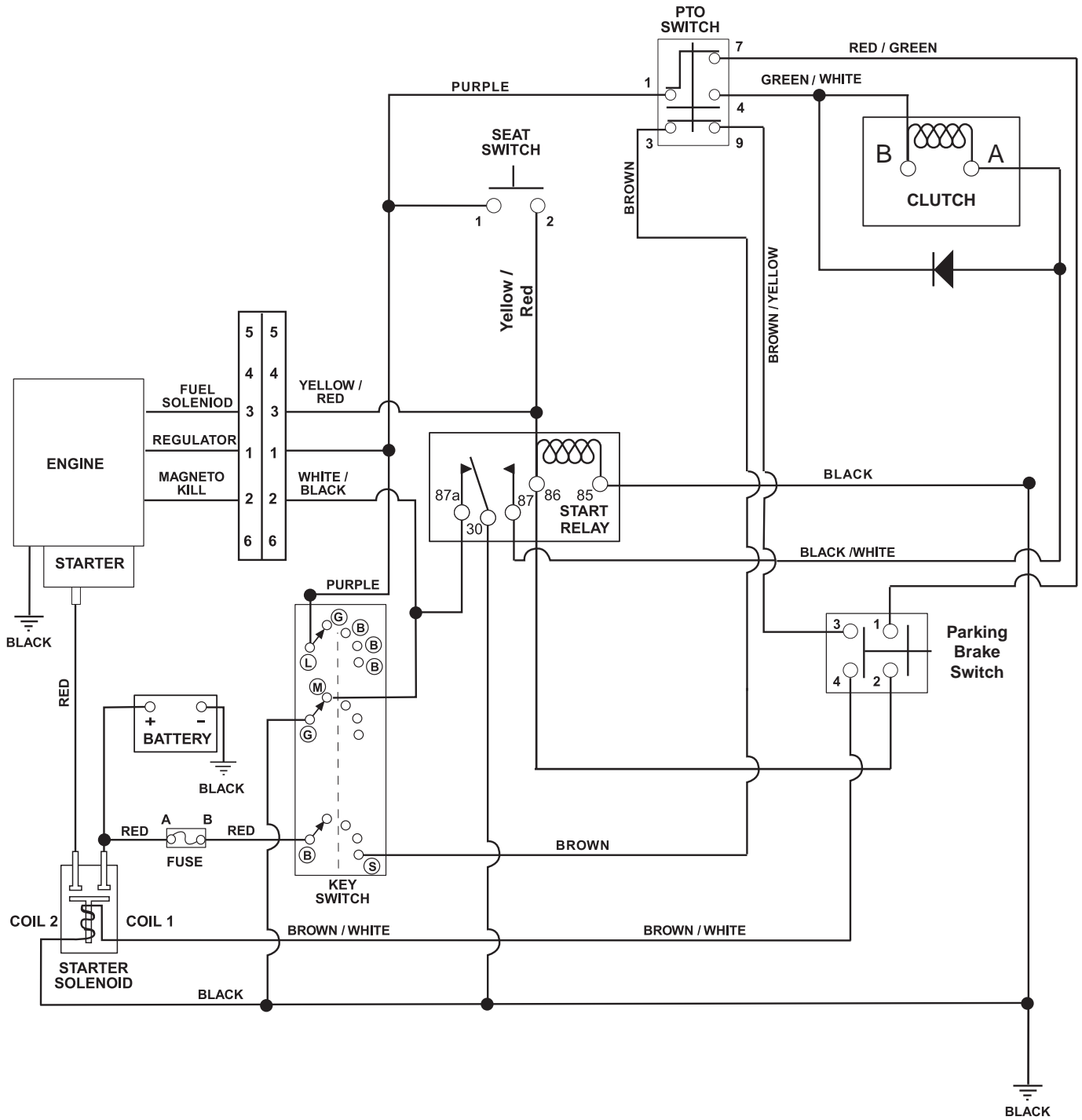
ELECTRICAL SYSTEM

Model 915146, 148, 150, 168, 170

Item	Part No.	Qty.	Description
1	03927000	1	Key
2	03042800	1	Relay
3	09351100	1	Fuse, 30 AMP
4	03290500	1	Key Switch w/Key
5	00696900	1	Solenoid
6	N/A	1	Battery, Sealed Maintenance free U1-250 (Purchase replacement locally)
7	05946800	2	Bolt, Hex .25-20 x .75
8	06437300	2	Washer, Flat Steel .281 x .62 x .065
9	06509200	2	Nut, KEPS .250-20
10	07533200	3	Boot, Eyelet Terminal
11	03777100	1	Cable, POS
12	03777000	1	Ground Cable
13	01545600	1	Switch, Clutch With Retainer
14	03773900	1	Harness, Wiring ZT
15	03606600	1	Switch, Double Pole N.O. / N.O.
16	03654200	1	Switch, Snap Mounting (N.O.)
17	07505700	1	Insulator
18	06310500	4	Washer, Locking .31
19	06536700	2	Nut, Jam .31-24
20	06500012	1	Nut, .25-20 Nyloc Flange
21	07506500	1	Grommet .125 x 1.000 ID
22	07411600	2	Screw, Tapping .250-20 x .37 Hex Washer Head
23	06543500	1	Nut, Locking, Top, Flange .25-20
24	07400038	2	Screw, 12-14 x .75 HX
25	03781900	1	Hold Down, Battery
26	03972600	1	Harness, Clutch
27	07411900	1	Screw, Tapping 12-24 x .50 Hex Washer Head
28	05973300	1	Bolt, Hex M8-1.25 x 20
29	06308600	1	Washer, Locking .31 x .078 Regular
30	06537200	1	Nut, Locking, Center, Jam .375-16

WIRING DIAGRAM

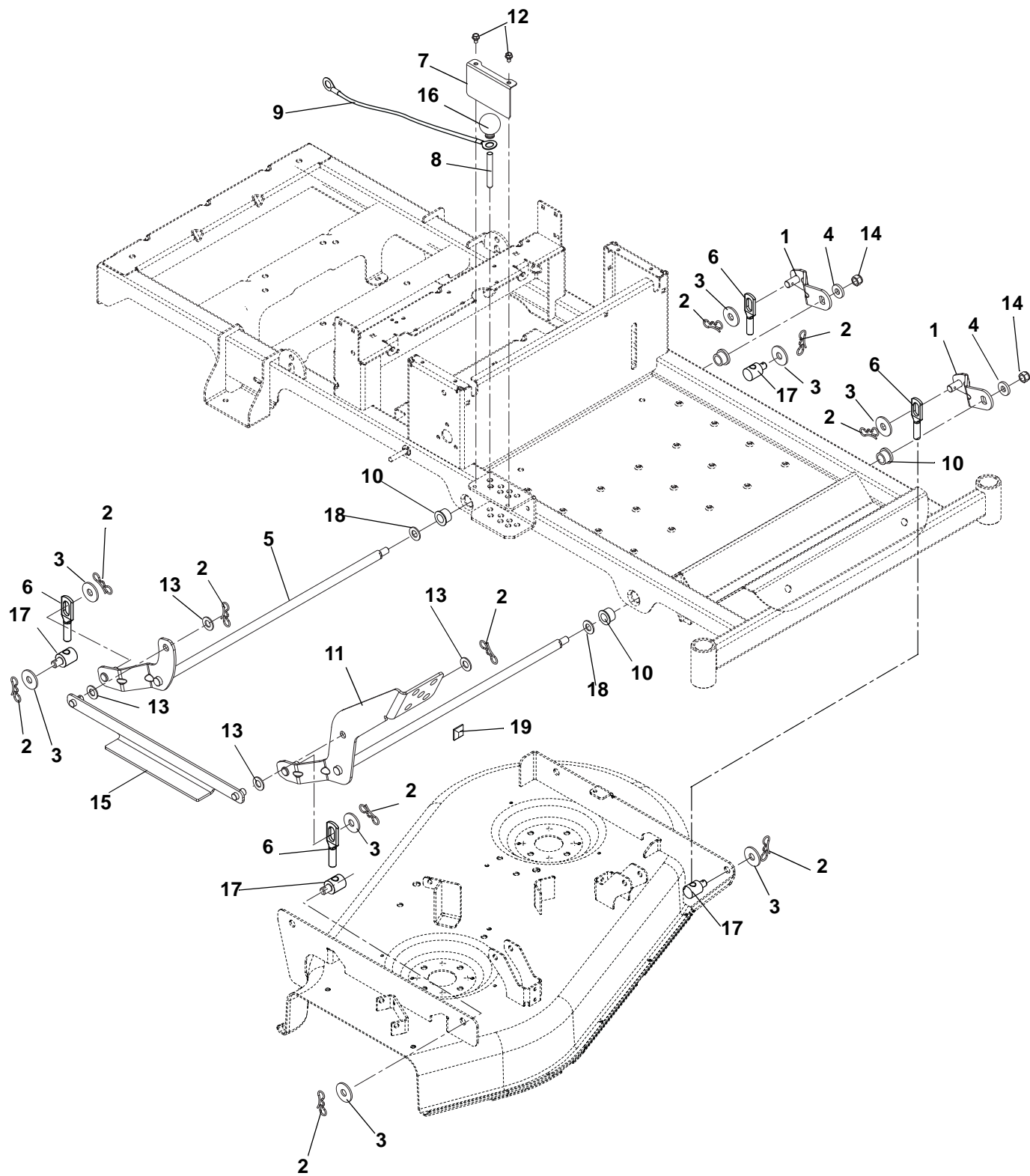
Model 915146, 148, 150, 168, 170



NOTES

MOWER DECK LIFT

Model 915146, 148, 150, 168, 170



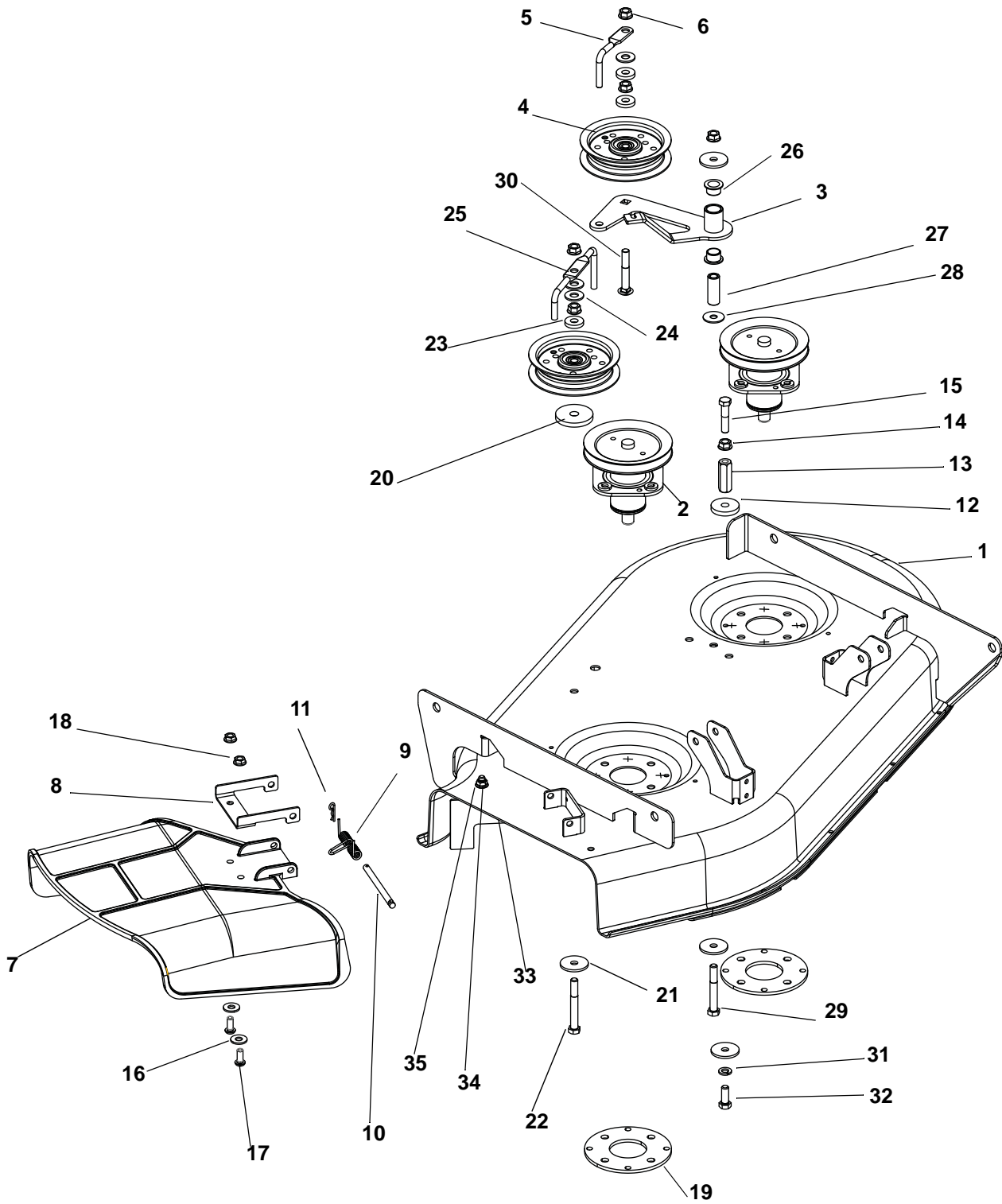
MOWER DECK LIFT

Model 915146, 148, 150, 168, 170

Item	Part No.	Qty.	Description
1	03745400	2	Weldment, Lift Arm
2	06700201	10	Pin, Bow Tie Locking Cotter .091 x 1.875
3	06436400	8	Washer, Flat, Steel .511 x 1.441 x .125
4	06400903	2	Washer, Flat, Steel .50 x 1.25 x .160
5	03746100	1	Weldment, Rear Deck Lift Shaft
6	00160000	4	Assembly, Deck Link
7	03766151	1	Guard, Deck Lift
8	03755200	1	Pin, Deck
9	06900317	1	Cable, 12.0 Lanyard, Nylon
10	05519100	4	Bushing, Flange .627 x .879 x .469 x 1.120
11	03744800	1	Weldment, Deck Lift Pedal
12	07411600	2	Screw, Tap .25-20 x .37
13	06443300	4	Washer, Flat, Nylon .52 x 1.00 x .08
14	06500633	2	Nut, Nyloc 7/16-20
15	03745300	1	Weldment, Lift Link
16	07533500	1	Knob, Ball, Black 1.47" .375-16
17	01590400	4	Trunnion, .50
18	06442800	2	Washer, Flat Steel .656 x 1.31 x .095
19	07525100	1	Bumper, Rubber

MOWER DECK, BELT AND IDLERS

Model 915146, 168



PE0870_A_G_Deck_BeltsHVZ

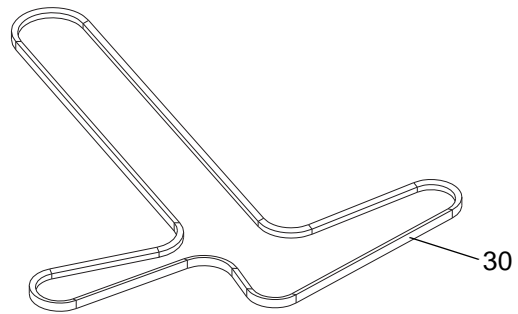
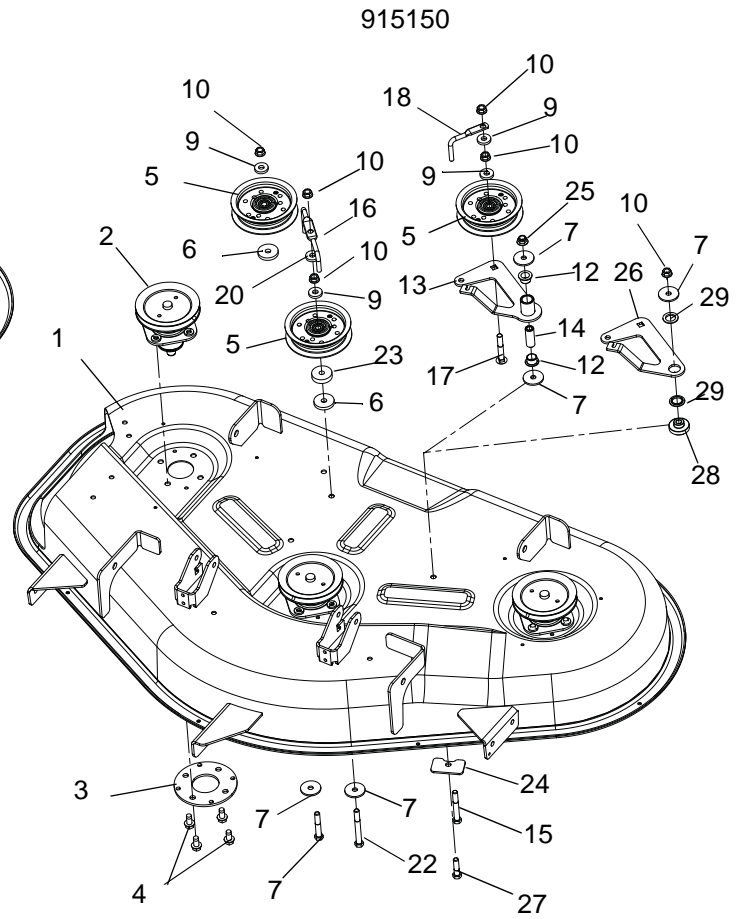
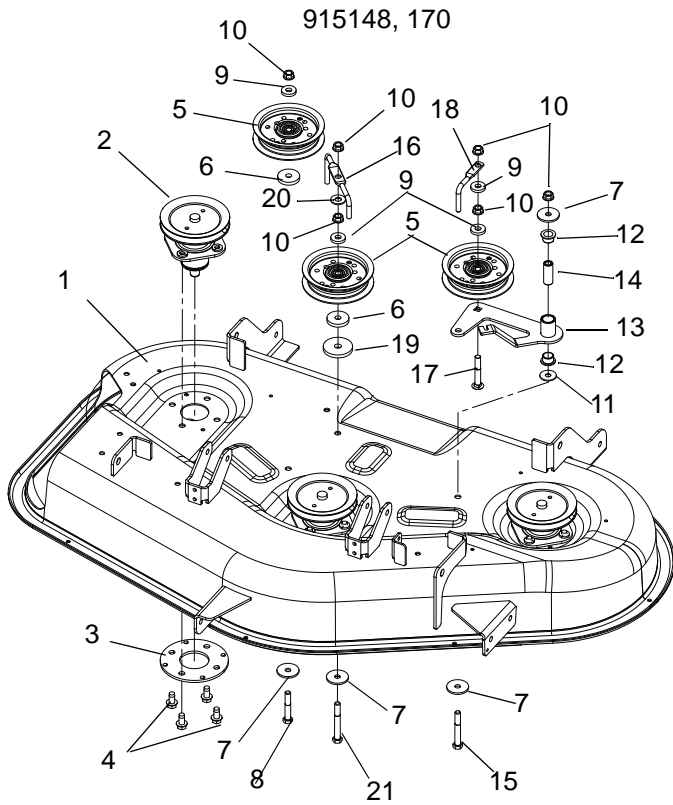
MOWER DECK, BELT AND IDLERS

Model 915146, 168

Item	Part No.	Qty.	Description
1	04232553	1	Weldment, 34" Deck
2	61559900	2	Assembly, Spindle
3	04072900	1	Weldment, Idler Arm
4	07300039	2	Assembly, Idler 4"
5	03828853	1	Wireform, Belt Finger
6	06542000	5	Nut, Locking Top Flange .38-16
7	03994300	1	Chute, Side Discharge
8	00662653	1	Chute Reinforcement
9	01258100	1	Spring, Torsion
10	06800002	1	Pin, 5/16 x 3.88"
11	06713500	1	Pin, Hair Internal .08 x .18 x 1.18
12	06400006	2	Washer, Flat Steel .406 x 1.50 x .245
13	06533500	1	Nut, Coupling .375-16 x 1.75
14	06534900	1	Nut, Spin Lock, Flange .375-16
15	05958500	1	Bolt, Hex .38-16 x 1.75
16	06435700	2	Washer, Flat Steel .38 x .875 x .083
17	05920900	2	Screw, Socket Head .31-18 x .75 Button Head
18	06543100	2	Nut, Locking Top Flange .31-18
19	03839053	2	Plate, REINF, Spindle
20	06443600	1	Washer, Flat Steel .469 x 2.00 x .25
21	06443400	4	Washer, Flat Steel .380 x 1.50 x .125
22	05957800	1	Bolt, Hex .38-16 x 3.00
23	06444000	3	Washer, Flat Steel .406 x 1.00 x .188
24	06435900	3	Washer, Flat Steel .438 x 1.00 x .083
25	03974153	1	Belt Finger
26	05500907	2	Bushing, Flange, .625 x .750 x .500 x 1.00
27	03763400	1	Spacer, .375ID x .625D x 1.66 Promaster
28	06425500	1	Washer, Flat Steel .375 x 1.125 x .065 G446470
29	05961400	1	Bolt, Hex .38-16 x 2.75
30	06224400	1	Bolt, Round Head Square Neck .38-16 x 2.50
31	06308800	1	Washer, Locking .38 x .094 Regular
32	05948700	1	Bolt, Hex .38-16 x 1.00
33	03779200	1	Bracket, Baffle, Discharge 34"
34	05947000	2	Bolt, Hex .37-18 x .75
35	06545400	2	Nut, Locking Nylon Flange .31-18

MOWER DECK, BELT AND IDLERS

Model 915148, 150, 170



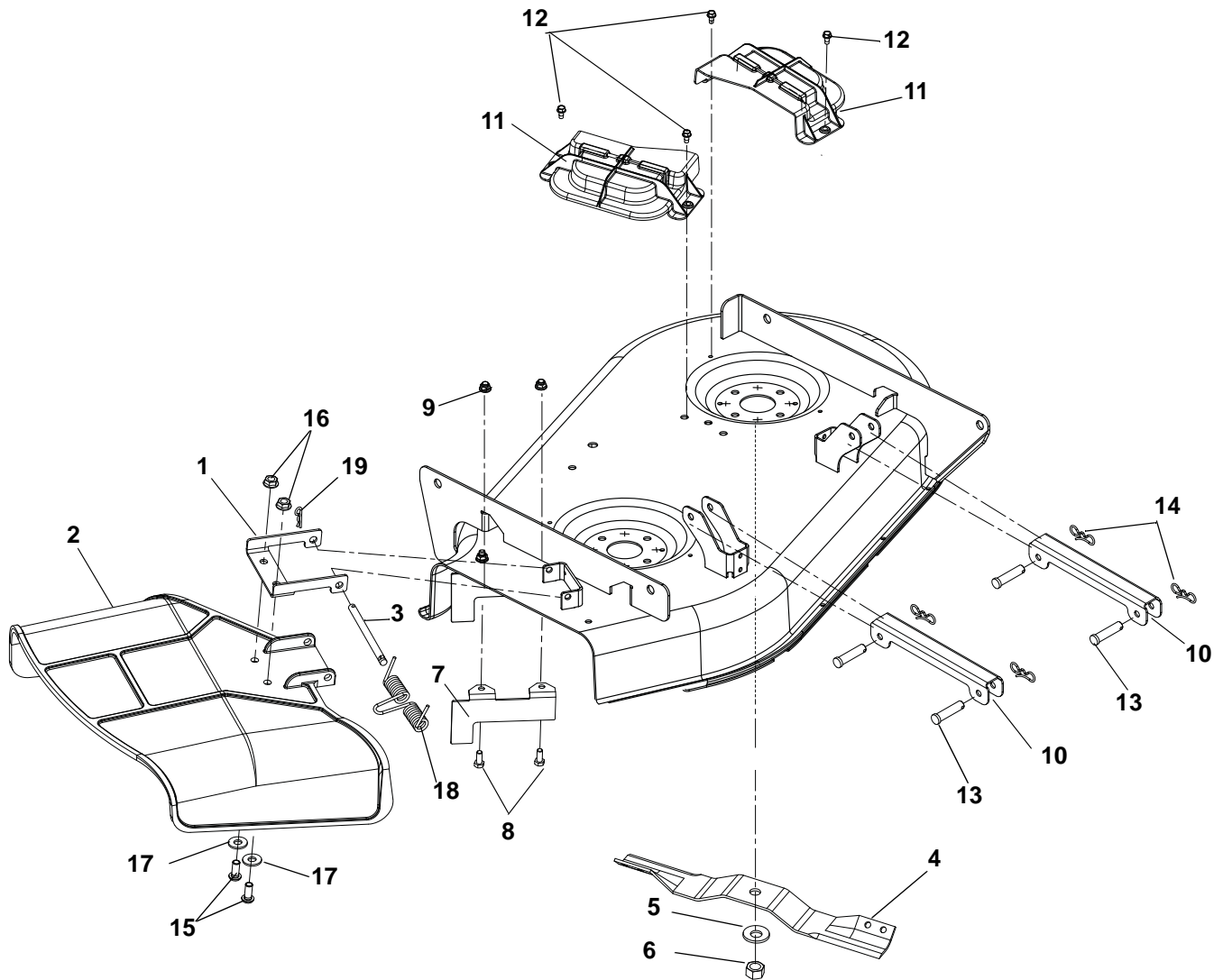
MOWER DECK, BELT AND IDLERS

Model 915148, 150, 170

Item	Part No.	Qty.	Description
1	03967753	1	Deck, 42" (915148, 170)
	03945953	1	Deck, 50" (915150)
2	51520900	3	Assembly, Spindle (915148, 170)
	51519500	3	Assembly, Spindle (915150)
3	03839053	3	Plate, Spindle
4	07415400	12	Screw, Tapping .38-16 x .75 Hex Washer Head
5	07300039	3	Assembly, Idler 4"
6	06400006	2	Washer, Flat, Steel .406 x 1.50 x .245
7	06443400	4	Washer, Flat, Steel .380 x 1.50 x .125
8	05962900	1	Bolt, Hex .38-16 x 2.25
9	06444000	4	Washer, Flat, Steel .406 x 1.00 x .188
10	06542000	6	Nut, Locking, Top, Flange .38-16
11	06425500	1	Washer, Flat, Steel .375 x 1.125 x .065
12	05500907	2	Bushing, Flange, .625 x .750 x .500 x 1.00
13	04072900	1	Weldment, Idler Arm
14	03763400	1	Spacer, .375ID x .625 OD x 1.66
15	05961400	1	Bolt, Hex .38-16 x 2.75
16	03974153	1	Belt Finger
17	06224400	1	Bolt, Round Head Square Neck .38-16 x 2.50
18	03828853	1	Wireform Belt Finger
19	06443600	1	Washer, Flat, Steel .469 x 2.00 x .25
20	06435900	1	Washer, Flat, Steel .438 x 1.00 x .083 (915148, 170)
21	05957800	1	Bolt, Hex .38-16 x 3.00 (915148, 170)
22	05961100	1	Bolt, Hex .38-16 x 3.25 (915150)
23	01594000	1	Spacer, .39 x 1.50 x .380 (915150)
24	04061053	1	Plate, Deck (915150)
25	06545500	1	Nut, Locking, Nylon, Flange .38-16 (915150)
26	03956000	1	Idler Arm (915150)
27	05957900	1	Bolt, Hex .38-16 x 1.50 (915150)
28	03960600	1	Spacer, Idler Arm (915150)
29	03960700	2	Bushing, Idler Arm (915150)
30	07200523	1	V-Belt, 4L Wrapped (915148, 170)
	07200524	1	V-Belt, 4L Wrapped (915150)

BELT COVERS AND BLADES

Model 915146, 168

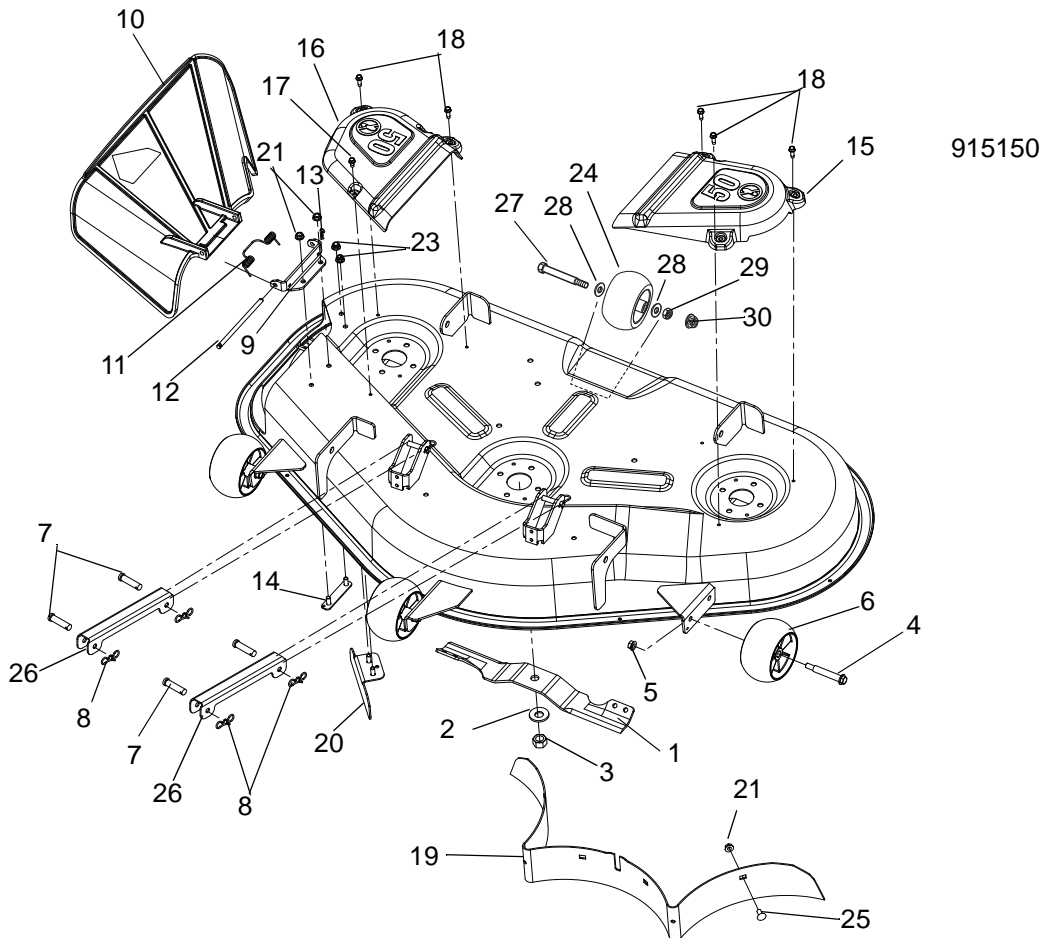
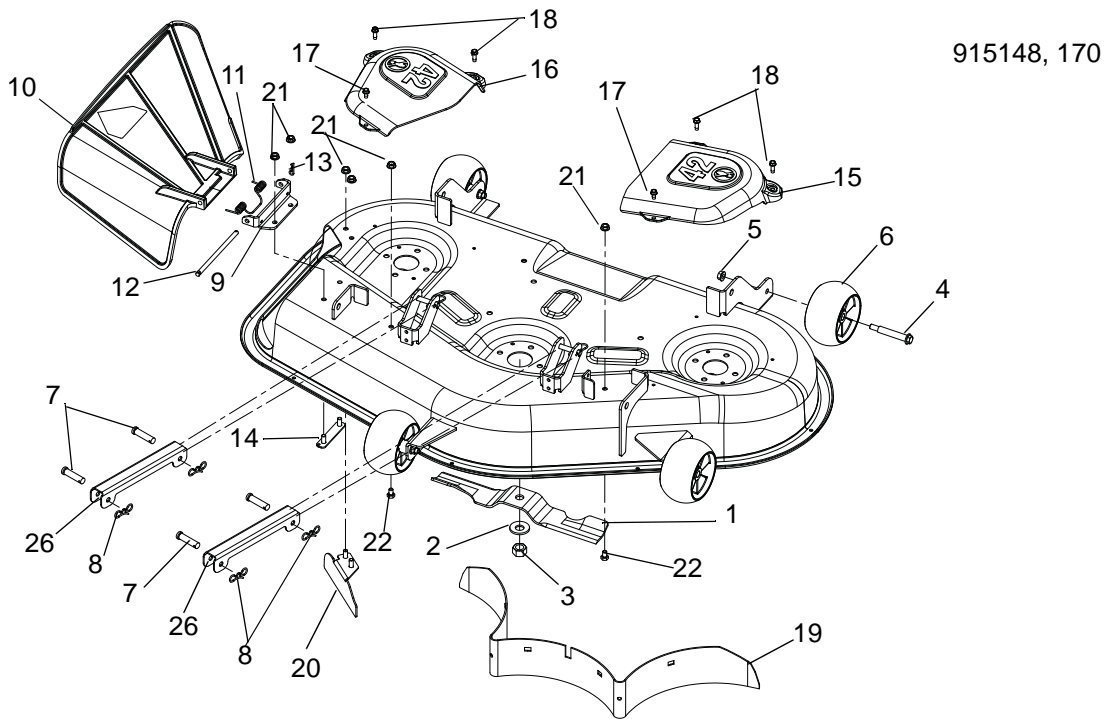


Item	Part No.	Qty.	Description
1	00662653	1	Chute Reinforcement
2	03994300	1	Molded Chute
3	06800002	1	Pin, 5/16 x 3.88"
4	03971900	2	Blade, Mower 17.35
5	06445700	2	Washer, Beveled .63 x 1.625 x .14
6	06500630	2	Nut, Hex .62-18
7	03779253	1	Bracket, Baffle Discharge 34"
8	05947000	2	Bolt, Hex .31-18 x .75
9	06545400	2	Nut, .31-18 Nyloc Flange
10	03764053	2	Bracket, Stabilizer Link
11	04323800	2	Cover, Belt Molded
12	07400034	4	Screw, Tapping .25-20 x .50 Hex Washer Head
13	06800102	4	Pin, Clevis .375 x 2.00
14	06700206	4	Pin, Bow Tie Locking
15	05920900	2	Screw, .31-18 x .75
16	06543100	2	Nut, Locking Top Flange .31-18
17	06435700	2	Washer, Flat, Steel .38 x .875 x .083
18	01258100	1	Spring, Torsion
19	06713500	1	Pin, Hair .08 x .18 x 1.18

NOTES

BELT COVERS AND BLADES

Model 915148, 150, 170



BELT COVERS AND BLADES

Model 915148, 150, 170

Item	Part No.	Qty.	Description
1	04265400	3	Mower Blade, 14.83" (915148, 170)
	03971900	3	Blade, Mower 17.35" (915150)
2	06445700	3	Washer, Bellville .63 x 1.625 x .14
3	06500630	3	Nut, Hex .62-18
4	07056800	3	Bolt, Shoulder .38-16 x 2.50 Hex Washer Head
5	06542000	3	Nut, Locking, Top, Flange .38-16
6	03905600	4	Anti-Scalp Wheel, 5 x 3 OS (915148, 170)
	03905600	3	Anti-Scalp Wheel, 5 x 3 OS (915150)
7	06800102	4	Pin, Clevis .375 x 2.00
8	06700206	4	Pin, Bow Tie Locking Cotter
9	04073053	1	Bracket, Discharge Chute Mount 42" (915148, 170)
	03977553	1	Bracket, Discharge Chute Mount 50" (915150)
10	03902300	1	Discharge Chute
11	08300515	1	Spring, Torsion
12	00475800	1	Pin, 5/16 x 5.80"
13	06713500	1	Pin, Hair Internal .08 x .18 x 1.18
14	03977400	1	Weldment, Discharge Chute MT. Strap
15	03902200	1	Belt Cover, Left Hand 42" (915148, 170)
	03901900	1	Belt Cover, Left Hand 50" (915150)
16	03902100	1	Belt Cover, Right Hand 42" (915148, 170)
	03901800	1	Belt Cover, Right Hand 50" (915150)
17	07400034	2	Screw, Tapping .25-20 x .50 Hex Washer Head (915148, 170)
	07400034	1	Screw, Tapping .25-20 x .50 Hex Washer Head (915150)
18	07414200	4	Screw, Tapping .25-20 x .75 Hex Washer Head
19	03957853	1	Baffle, 42 Rear (915148, 170)
	04069053	1	Baffle, 50 Rear (915150)
20	04044153	1	Baffle, 42" Deflector (915148, 170)
	03955953	1	Baffle, 50" Deflector (915150)
21	06543100	6	Nut, Locking, Top, Flange .31-18 (915148, 170)
	06543100	3	Nut, Locking, Top, Flange .31-18 (915150)
22	05947200	2	Bolt, Hex .31-18 x .50 (915148, 170)
23	06545400	2	Nut, Locking, Nylon, Flange .31-18 (915150)
24	02745400	1	Roller (915150)
25	06220800	1	Bolt, Round Head Square Neck .31-18 x .75 (915150)
26	03764053	2	Bracket, Stabilizer Link
27	05960900	2	Bolt, Hex .38-16 x 3.50
28	06436200	2	Washer, Flat, Steel .406 x .812 x .065
29	06537200	2	Nut, Locking, Center, Jam .375-16
30	06545500	1	Nut, Locking, Nylon, Flange .38-16



GRAVELY
655 West Ryan Street
Brillion, WI 54110
920-756-4688
Fax 920-756-2407
www.gravelly.com

An *Ariens* Company Brand