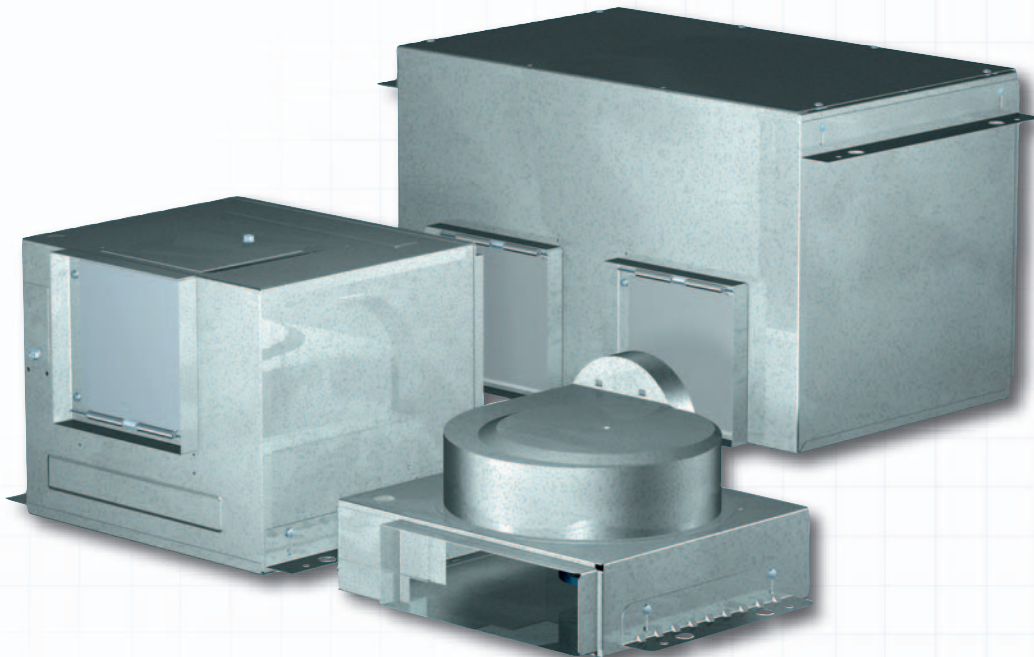


# Centrifugal Ceiling and Cabinet Exhaust Fans Models SP and CSP



*Making a Sound Difference  
with Silent Solutions*

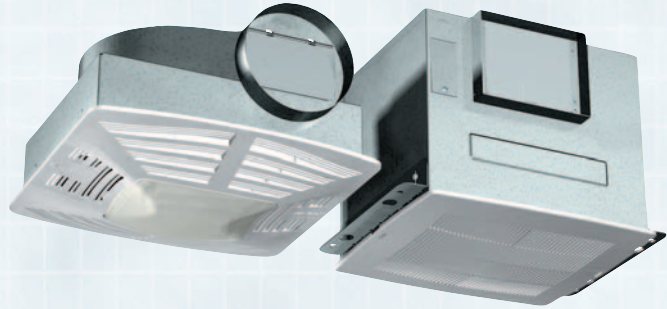


# Ceiling and Cabinet Exhaust Fans

Great things come in small packages, as do our ceiling fans (Model SP) and cabinet fans (Model CSP). Be assured when you buy any Greenheck product, you are getting a quality product at a competitive price. In fact, we guarantee our ceiling and cabinet exhaust fans with a three (3) year warranty. We offer the most comprehensive ceiling and cabinet exhaust fan line in the commercial market. We are your market leader!

## Benefits

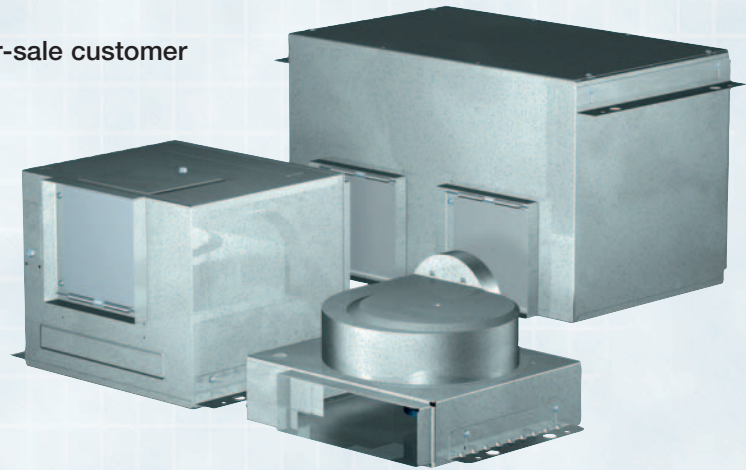
- Low sound
- Compact size
- Competitive price
- Broadest performance selections in the industry



**SP fans** are designed for ceiling mounted applications.

## Go Inside the Numbers

- Greenheck has been providing solutions for over **50** years.
- Preferred **3 to 1** over the competition.
- Number **1** in product quality and reliability.
- Number **1** in customer satisfaction and after-sale customer service support.
- More than **400** times a day a new ceiling fan is put into service.
- **3** year warranty.



**CSP fans** are designed for inline remote mounted applications.



Greenheck Fan Corporation certifies that the SP models shown herein are licensed to bear the AMCA seal. The ratings shown are based on tests and procedures performed in accordance with AMCA Publication 211 and AMCA Publication 311 and comply with the requirements of the AMCA Certified Ratings Program.

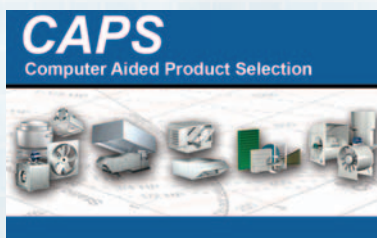


Greenheck Fan Corporation certifies that the CSP models shown herein are licensed to bear the AMCA seal. The ratings shown are based on tests and procedures performed in accordance with AMCA Publication 211 and comply with the requirements of the AMCA Certified Ratings Program.



Models SP and CSP are listed electric fans (UL/cUL 507). Ceiling Exhaust Fans are also UL Listed for above bathtub/shower with GFCI branch protected circuit. File no. E33599.

## Leading Edge Technical Support



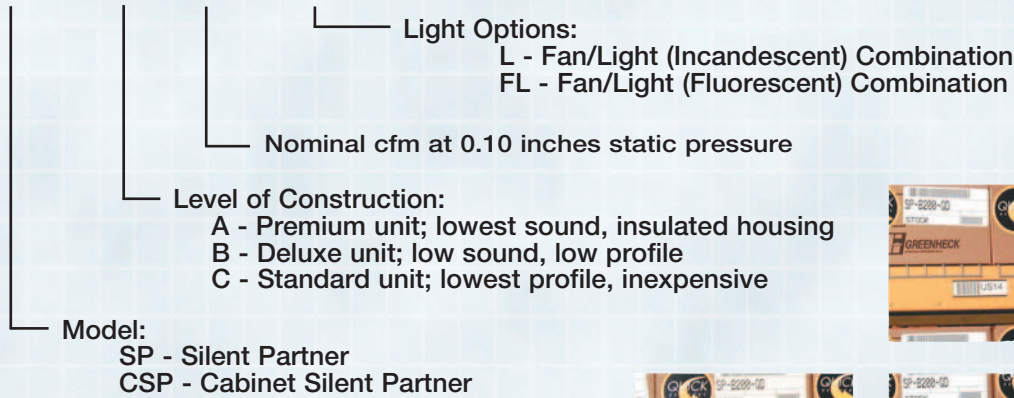
When you need extensive product and IOM (Installation, Operation and Maintenance Manual) information, our products are supported by the industry's best product literature, electronic media, and Computer Aided Product Selection (CAPS) program. You'll also find this information on our website at [www.greenheck.com](http://www.greenheck.com)

You can always count on personal service and expertise from our national and international representative organization. To locate your nearest Greenheck representative, call 715-359-6171 or visit our website at [www.greenheck.com](http://www.greenheck.com)

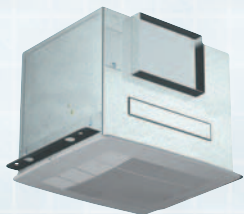


# Model Number Code

**SP - A 50 FL**



## Table of Contents



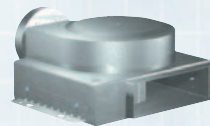
SP-A.....4  
 SP-A Light.....5  
 SP-A Performance.....16



CSP-A.....10  
 CSP-A Performance.....18



SP-B.....6  
 SP-B Light.....7  
 SP-B Performance.....17



CSP-B.....11  
 CSP-B Performance.....19



SP-C.....8  
 SP-C Performance.....17



Sound Data.....9  
 Accessories.....12 - 15  
 Specifications.....19

## Quick Delivery and Quick Build Programs



Order from hundreds of SP and CSP configurations, accessories, and thousands of other products that can ship to your job site in less than 24 hours. We have strategically located warehouses across the United States and internationally to fill your request at a moments notice. Speed up your process even more by ordering your units at QD Online at [www.greenheck.com/qd](http://www.greenheck.com/qd).

For other sizes and configurations where rapid response time is required, our Quick Build (QB) Program manufactures and ships your custom products in one, three, five, or ten days.

# PREMIUM CEILING FAN



**SP**

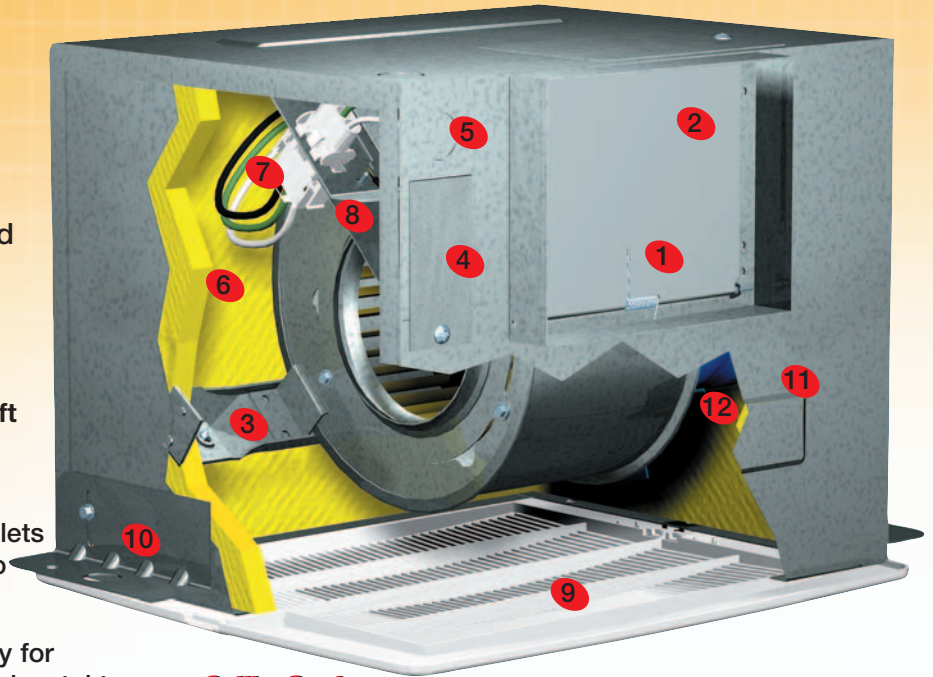
**A**

The SP-A is a Premium Ceiling Fan. It is in the top of its class when it comes to meeting sound requirements.

- Profile as low as 10<sup>1</sup>/<sub>2</sub> inches.
- Sound levels as low as 0.7 sones.
- Air volume as high as 1,607 cfm.
- UL Listed for above bathtub/shower with GFCI branch protected circuit.

## SP-A FEATURES

- 1 Spring Loaded Aluminum Backdraft Damper** - Eliminates rattling or unwanted backdrafts.
- 2 Outlet** - Both square and round outlets are field rotatable from horizontal to vertical discharge.
- 3 Power Assembly** - Removes quickly for maintenance or conversion from horizontal to vertical discharge.
- 4 External Electrical Access** - Eliminates removing motor pack, saving installation time.
- 5 Electrical Knockouts (horizontal or vertical)** - Eliminates drilling holes.
- 6 Acoustic Insulation** - Absorbs sound.
- 7 Disconnect** - Servicing is quick and safe.
- 8 Electrical Junction Box** - Large for easy wiring.
- 9 Attractive Designer Grille** - Concealed attachment screws securely fasten grille to housing for quiet, rattle free operation.
- 10 Mounting Brackets** - Fully adjustable for multiple installation conditions.
- 11 Housing** - Embossed galvanized steel for rigidity.
- 12 Motors** - All motors are compatible for use with speed controls and have thermal overload protection. Both domestic and international applications available.
  - 50 cycle, 220v, and 240v options. (See page 16 for availability)
  - 60 cycle, 115v, 208v, 220v, 230v, and 277v options. (See CAPS for availability)



### Grille Options

- Designer - Standard Grille
- Decorative - Lighted and non-lighted
- Aluminum - White enamel finish
- Stainless Steel - Polished stainless steel finish

### Round Duct Connection

- Standard - Sizes A50, A70, and A90.



### Round Duct Adapter

- Optional - Sizes A110 through A510

### Exclusive Electrical Wiring Feature

Greenheck SP-A models are the only fans of this type with an electrical access cover located on the housing exterior. This feature permits external wiring without removing the power assembly, saving installation time and cost.

### Vertical Discharge

Photo shows exhaust outlet duct installed in the optional vertical position. The power assembly must be rotated to match the duct adapter position. (See SP-A IOM)



### Double Wide Fans

Available for applications requiring 700 cfm or greater. Double wide fans have two double width forward curved wheels, which are housed in separate scrolls, and driven by a single motor.







## Light Options

Greenheck's fan/light combination includes a prismatic or frosted lens, and compact fluorescent or incandescent lamps. Our unique patent pending light box is manufactured with a reflective material to increase the light given off by either type of lamp. *UL Listed for above bathtub/showers with GFCI branch protected circuit.*

## Available on Sizes 50 - 125

### Prismatic Lens



The prismatic lens design provides approximately 25% more light than a traditional frosted lens. The lens may be easily removed to replace light bulbs. *(Patent Pending)*

### Frosted Lens



The frosted lens option is a traditional design which lets approximately 80% of light through the lens. The lens may be easily removed to replace light bulbs.

### Compact Fluorescent Lamps (CFL)



- Quick start bulbs
- Reflective light box *(Patent Pending)*
- Produce 90% less heat
- Lower energy costs
- Two 13 watt CFL bulbs equals 100 watts of incandescent light (included)

### Incandescent Lamps



- Dimmable
- Reflective light box *(Patent Pending)*
- Low first-cost light
- One bulb provides up to 100 watts of light (by others)

A major advantage of using CFL's is to save money, as shown in the table to the right. This table assumes the light is on for six hours per day and that the electric rate is 10 cents per kilowatt-hour. This study was based over a 4½ year period.

	27 Watt Compact Fluorescent	100 Watt Incandescent
Cost of Lamps	\$14.00	\$0.50
Lamp Life	1,642.5 days (4.5 years)	167 days
Annual Energy Cost	\$5.91	\$21.90
Lamps Replaced in 4.5 years	0	10
Total Cost	\$40.60	\$103.55
Savings Over Lamp Life	\$62.95	\$0.00

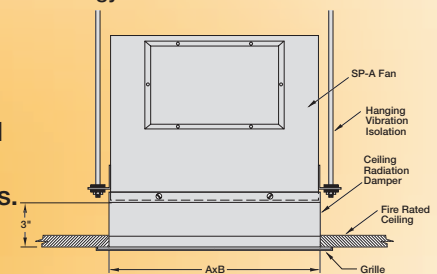
Source: U.S. Department of Energy, August 2001  
Office of Energy Efficiency and Renewable Energy

## Ceiling Radiation Damper



National Fire Protection Association (NFPA) Standard 90A requires openings in fire rated ceiling/floor assemblies be protected by appropriately rated ceiling radiation dampers. As a result, many local codes require fans installed in fire rated ceilings must also be protected by dampers which are insulated against both heat and flame.

The Greenheck SP-A ceiling radiation damper is UL Classified, rated at three to four hours fire resistance, and is available on all SP-A fans and fan/light combinations. This design saves space by allowing the damper to mount directly beneath the fan.



\*CRD is approximately 1/4 inch larger than housing dimension. (See SP-A IOM)

# DELUXE CEILING FAN



**SP**

**B**

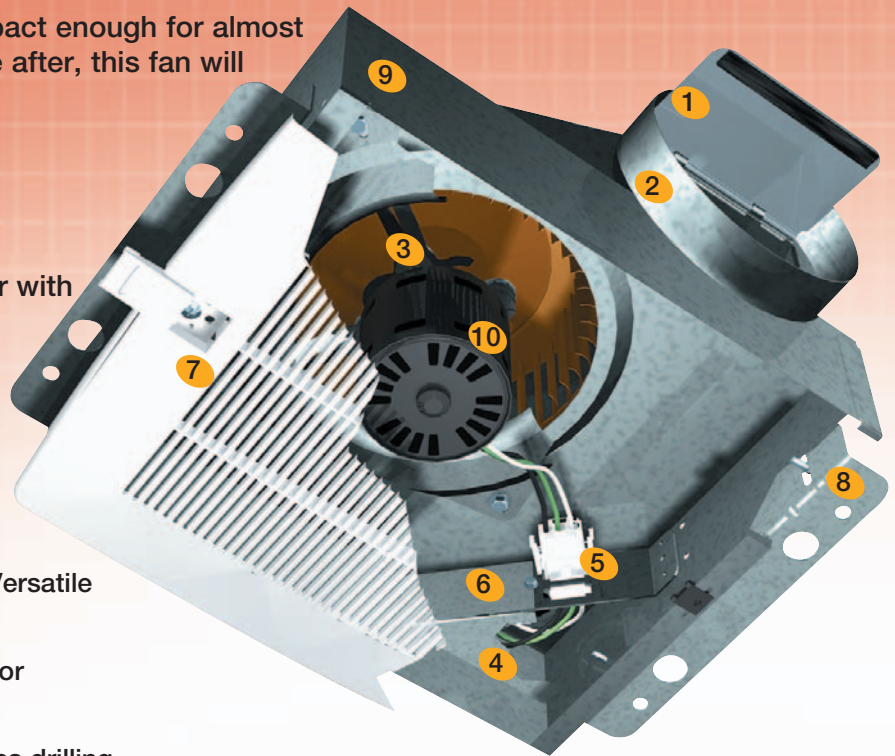
The SP-B is a Deluxe Ceiling Fan compact enough for almost any application. If quiet is what you are after, this fan will accommodate your needs.

- Profile as low as 6<sup>15</sup>/<sub>16</sub> inches.
- Sound levels as low as 1.7 sones.
- Air volume as high as 197 cfm.
- UL Listed for above bathtub/shower with GFCI branch protected circuit.

## SP-B FEATURES

- 1 Aluminum Backdraft Damper** - Prevents unwanted backdrafts.
- 2 Round Standard Outlet (4 or 6 in.)** - Versatile for quick, easy connections.
- 3 Power Assembly** - Removes quickly for maintenance.
- 4 Electrical Access (vertical)** - Eliminates drilling holes.
- 5 Disconnect** - Servicing is quick and safe.
- 6 Electrical Junction Box** - Large for easy wiring.
- 7 Attractive Designer Grille** - Concealed attachment screws securely fasten grille to housing for quiet, rattle free operation.
- 8 Mounting Brackets** - Fully adjustable for multiple installation types.
- 9 Housing** - Embossed galvanized steel for rigidity and low profile for height restricted areas.
- 10 Motors** - All motors are compatible for use with speed controls and have thermal overload protection. Both domestic and international applications available.

- 50 cycle, 220v, and 240v options.  
(See page 17 for availability)
- 60 cycle, 115v, 208v, 220v, 230v, and 277v options. (See CAPS for availability)

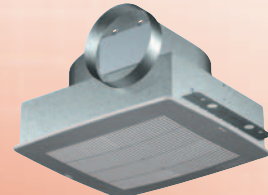
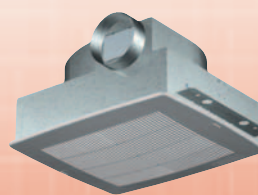


### Grille Options

- Designer** - Standard Grille
- Decorative** - Lighted and non-lighted
- Aluminum** - White enamel finish
- Stainless Steel** - Polished stainless steel finish

### Round Duct Connection

- 4 in. - B50, B70, and B80
- 6 in. - B90, B110, B150, and B200

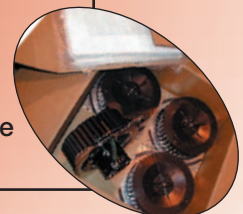
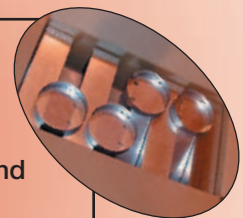


### Contractor 4 Paks

Save installation time and labor by installing the housing first, then installing the internal components after the sheetrocking, plastering, and finishing is done.

Housings are packaged in one box, power assembly and grille are packaged in another box.

Components are shipped to coincide with the phase of your project.





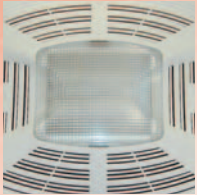


## Light Options

Greenheck's new fan/light combination includes a prismatic or frosted lens, and compact fluorescent or incandescent lamps. Our unique patent pending light box is manufactured with a reflective material to increase the light given off by either lamp. *UL Listed for above bathtub/showers with GFCI branch protected circuit.*

## Available on Sizes 50 - 150

### Prismatic Lens



The prismatic lens design provides approximately 25% more light than a traditional frosted lens. The lens may be easily removed to replace light bulbs. *(Patent Pending)*

### Frosted Lens



The frosted lens option is a traditional design which lets approximately 80% of light through the lens. The lens may be easily removed to replace light bulbs.

### Compact Fluorescent Lamps (CFL)



- Quick start bulbs
- Reflective light box *(Patent Pending)*
- Produce 90% less heat
- Lower energy costs
- Two 13 watt CFL bulbs equals 100 watts of incandescent light (included)

### Incandescent Lamps



- Dimmable
- Reflective light box *(Patent Pending)*
- Low first-cost light
- One bulb provides up to 100 watts of light (by others)

A major advantage of using CFL's is to save money, as shown in the table to the right. This table assumes the light is on for six hours per day and that the electric rate is 10 cents per kilowatt-hour. This study was based over a 4½ year period.

	27 Watt Compact Fluorescent	100 Watt Incandescent
Cost of Lamps	\$14.00	\$0.50
Lamp Life	1,642.5 days (4.5 years)	167 days
Annual Energy Cost	\$5.91	\$21.90
Lamps Replaced in 4.5 years	0	10
Total Cost	\$40.60	\$103.55
Savings Over Lamp Life	\$62.95	\$0.00

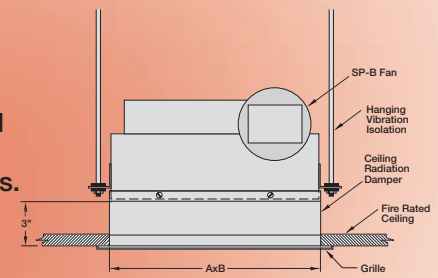
Source: U.S. Department of Energy, August 2001  
Office of Energy Efficiency and Renewable Energy

## Ceiling Radiation Damper



National Fire Protection Association (NFPA) Standard 90A requires openings in fire rated ceiling/floor assemblies be protected by appropriately rated ceiling radiation dampers. As a result, many local codes require fans installed in fire rated ceilings must also be protected by dampers which are insulated against both heat and flame.

The Greenheck SP-B ceiling radiation damper is UL Classified, rated at three to four hours fire resistance, and is available on all SP-B fans and fan/light combinations. This design saves space by allowing the damper to mount directly beneath the fan.

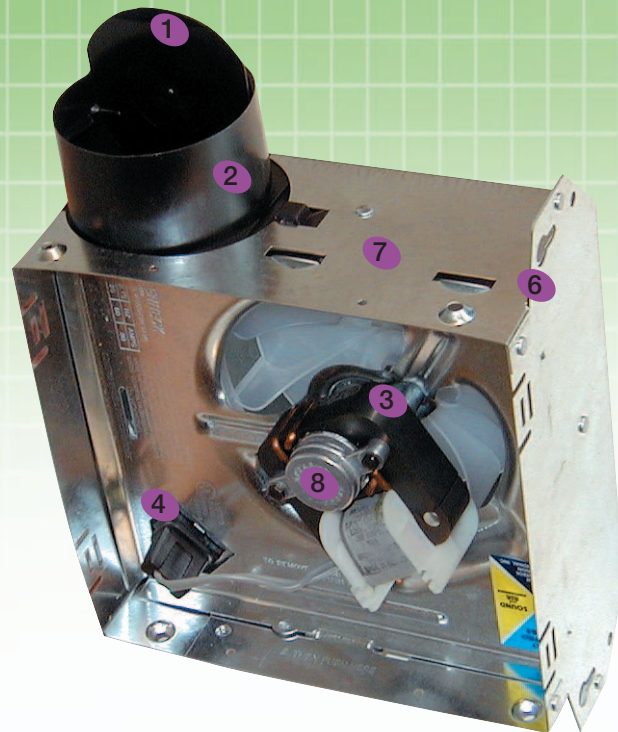


\*CRD is approximately 1/4 inch larger than housing dimension. (See SP-B IOM)



The SP-C is our economy ceiling fan designed for light commercial applications.

- Profile as low as 3<sup>5</sup>/<sub>8</sub> inches.
- Sound levels as low as 2.9 sones.
- Air volume as high as 52 cfm.
- UL Listed for above bathtub/shower with GFCI branch protected circuit.



## SP-C FEATURES

- 1 Plastic Backdraft Damper** - Prevents unwanted backdrafts.
- 2 Round Outlet** - 3 inch diameter allows quick easy connections.
- 3 Power Assembly** - Removes quickly for maintenance.
- 4 Disconnect** - Servicing is quick and safe.
- 5 Polymeric Grille** - Quickly snaps into place.
- 6 Mounting Brackets** - Adjustable for several installation types.
- 7 Housing** - Galvanized steel for rigidity and low profile for height restricted areas.
- 8 Motors** - Compatible for use with speed controls and has thermal overload protection.
  - 60 cycle, 115v



# Things to know, when sound is critical

## Sound Data

The sound data shown in this catalog has been presented to aid the system designer in selecting a fan which will meet the desired sound criteria. Some levels have been included on the performance pages to provide a means of quickly evaluating the relative loudness of a fan selection.

### What is a sone?

Sones are an internationally recognized unit of loudness. In practical terms, the loudness of one sone is equivalent to the sound of a quiet refrigerator measured from five feet away in an acoustically average room. A sone is a single number rating, which indicates the inlet noise derived from the eight audible octave bands. Sones are a linear measurement of sound level. For example, a sound level of 10 sones is twice as loud as 5 sones.

### What is the difference in a AMCA Sone vs. HVI Sones?

In general, the AMCA (Air Movement and Control Association) sone value is focused on commercial markets, whereas the HVI (Home Ventilating Institute) sone value is focused on residential markets. Both calculate their sone data from the same raw test data (eight octave bands), however an AMCA sone applies a hemispherical correction factor to the sound power and rounds to the nearest 0.1, whereas HVI applies a spherical correction factor to the sound power and rounds to the nearest 0.1 under 1.5 sones and to the nearest 0.5, 1.5 sones and greater. There are no conversions from one sone to the other, each must be calculated. In every instance the same fan will have a lower HVI calculated sone rating than an AMCA calculated sone rating.

### Can radiated noise increase the sound levels?

Radiated noise from fan housings can cause unacceptable sound levels, on any brand of fan. The size of these fans allows them to be placed in areas where this noise will be transmitted to the conditioned space through walls or ceilings. Where possible, cabinet fans should be located in remote parts of the ventilation system.

### When should a SP or CSP fan be used?

Model SP and CSP fans are designed for the lowest possible sound levels. Forward curved wheels, insulated housings, and vibration isolators between the motor and housing contribute to quiet, efficient operation. Applied and installed as recommended, SP and CSP sound levels will fall well within the ranges shown in the chart above. For applications where sound levels are critical, a remote mounted CSP with ductboard is recommended. Placement of SP/CSP fans should take into account the desired sound level at the location of the listener. Their compact size allows the system designer greater flexibility in locating these fans for lowest sound levels. In critical sound areas, insulated ductwork, flexible duct connections, or placing the fan in a remote section of the ductwork (away from the critical area) offers the best means of meeting desired sound levels.

When room sound levels are critical, such as in executive offices, conference rooms, hospital operating rooms, and school study areas, a CSP fan is the best choice. Shown here is a comparison of SP and CSP fans of the same size, with equal performance in typical installations. The CSP shows lower sone values.

Model	CFM	WG	FRPM	Sones
SP-A410	405	1/8	1000	3.7
CSP-A410	426	1/8	1000	2.1*

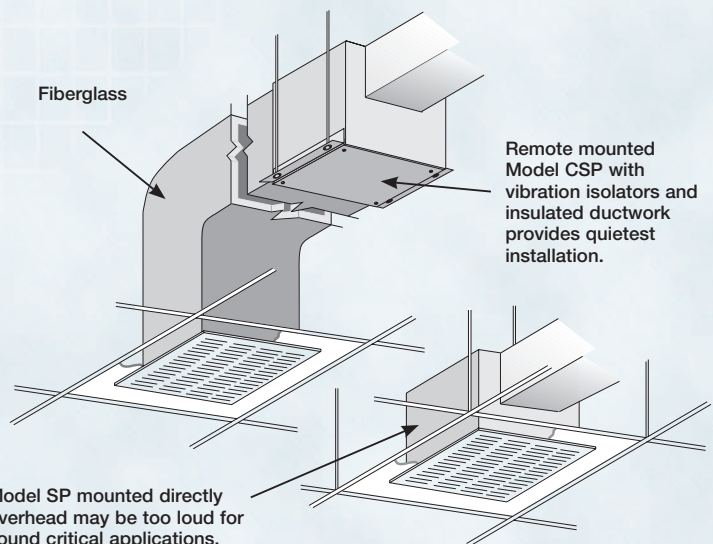
\*Sone value with insulated inlet duct.

## SUGGESTED LIMITS FOR ROOM LOUDNESS

Sones	DBA	Applications
1.3-4	32-48	Private homes (rural and suburban)
1.7-5	36-51	Conference rooms
2-6	38-54	Hotel rooms, libraries, movie theatres, executive offices
2.5-8	41-58	Schools and classrooms, hospital wards and operating rooms
3-9	44-60	Court rooms, museums, apartment houses, private homes (urban)
4-2	48-64	Restaurants, lobbies, general open offices, banks
5-15	51-67	Corridors and halls, cocktail lounges, washrooms and toilets
7-21	56-72	Hotel kitchens and laundries, supermarkets

Reprinted from AMCA Publication 302 (Application of Sone Ratings for Non Ducted Air Moving Devices, with room—sone—dBA correlations) with the written permission from the AMCA International, Inc., 30 West University Drive, Arlington Heights, IL 60004-1893.

NOTE: Values above are for room loudness and are not sound ratings. Room loudness is the resulting level in a conditioned space after the acoustical qualities of the room have been accounted for.





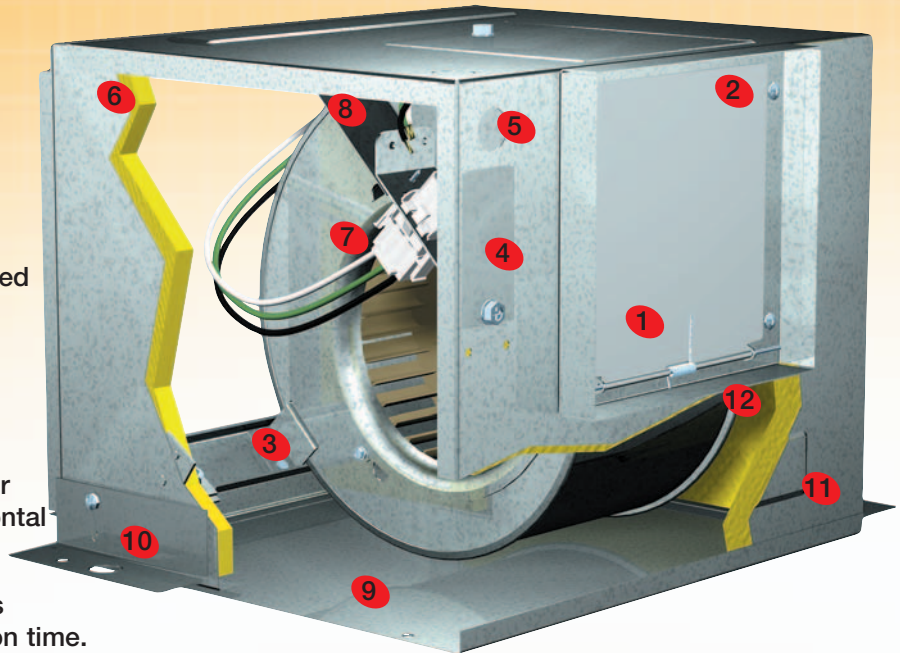
# PREMIUM INLINE FAN

The CSP-A is a Premium Inline Fan. It outperforms the competition and is preferred by specifying engineers.

- Profile as low as 10<sup>1</sup>/<sub>2</sub> inches.
- Sound levels as low as 0.8 sones.
- Air volume as high as 3,778 cfm.
- UL/cUL Listed.

## CSP-A FEATURES

- 1 Spring Loaded Aluminum Backdraft Damper** - Eliminates rattling or unwanted backdrafts.
- 2 Outlet** - Both square and round outlets are field rotatable from horizontal to vertical discharge.
- 3 Power Assembly** - Removes quickly for maintenance or conversion from horizontal to vertical discharge.
- 4 External Electrical Access** - Eliminates removing motor pack, saving installation time.
- 5 Electrical Knockouts (horizontal or vertical)** - Eliminates drilling holes.
- 6 Acoustic Insulation** - Absorbs sound.
- 7 Disconnect** - Servicing is quick and safe.
- 8 Electrical Junction Box** - Large for easy wiring.
- 9 Access Panel** - Gain easy access to internal components once installed.
- 10 Mounting Brackets** - Fully adjustable for multiple installation conditions.
- 11 Housing** - Embossed galvanized steel for rigidity.
- 12 Motors** - All motors are compatible for use with speed controls and have thermal overload protection. Both domestic and international applications available (*not shown*).
  - 50 cycle, 220v, and 240v options. (See page 18 for availability)
  - 60 cycle, 115v, 208v, 220v, 230v, and 277v options. (See CAPS for availability)



### Exclusive Electrical Wiring Feature

Greenheck CSP-A models are the only fans of this type with an electrical access cover located on the housing exterior. This feature permits external wiring without removing the power assembly, saving installation time and cost.

### Vertical Discharge

Photo shows exhaust outlet duct installed in the optional vertical position. The power assembly must be rotated to match the duct adapter position. (See CSP-A IOM)

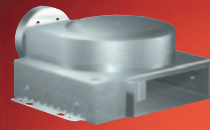


### Double Wide Fans

Available for applications requiring 700 cfm or greater. Double wide fans have two double width forward curved wheels, which are housed in separate scrolls, and driven by a single motor.





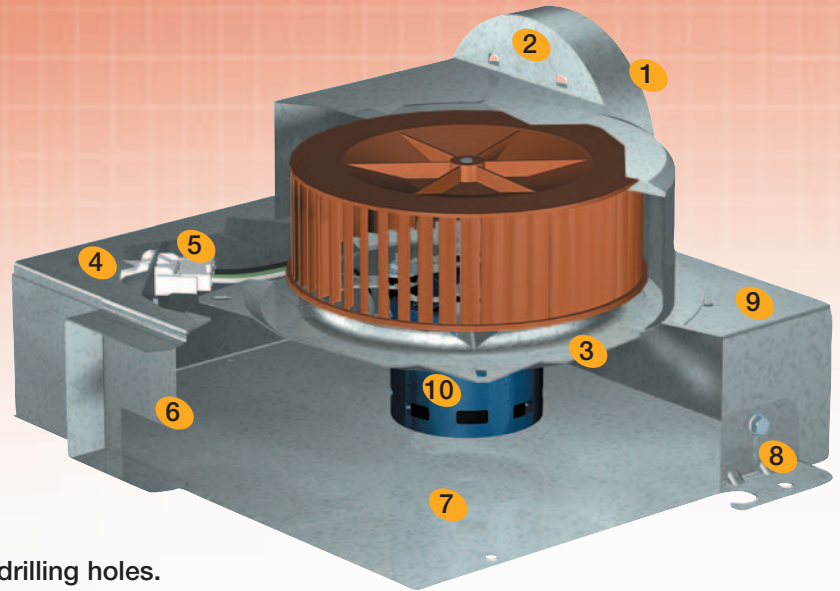


The CSP-B is a compact Deluxe Inline Fan. It is designed to fit in small remote quarters.

- Profiles as low as 6<sup>15</sup>/<sub>16</sub> inches.
- Sound levels as low as 2.0 sones.
- Air volume as high as 186 cfm.
- UL/cUL Listed.

## CSP-B FEATURES

- 1 Aluminum Backdraft Damper** - Prevents unwanted backdrafts.
- 2 Round Standard Outlet (4 or 6 in.)** - Versatile for quick, easy connections.
- 3 Power Assembly** - Removes quickly for maintenance.
- 4 Electrical Access (vertical)** - Eliminates drilling holes.
- 5 Disconnect** - Servicing is quick and safe.
- 6 Electrical Junction Box** - Large for easy wiring.
- 7 Access Panel** - Gain easy access to internal components once installed.
- 8 Mounting Brackets** - Fully adjustable for multiple installation types.
- 9 Housing** - Embossed galvanized steel for rigidity and low profile for height restricted areas.
- 10 Motors** - All motors are compatible for use with speed controls and have thermal overload protection. Both domestic and international applications available.
  - 50 cycle, 220v and 240v options.  
(See page 19 availability)
  - 60 cycle, 115v, 208v, 220v, 230v, and 277v options.  
(See CAPS for availability)



## Speed Controls

Speed controls may be used on Model SP and CSP fans for manual adjustment of the fan's performance (for final system balancing) or to control the fan's output in confined spaces, such as conference or meeting rooms. The fan can be adjusted to 60% of design airflow with a speed control. This reduction in airflow and fan speed is also accompanied by a reduction in noise level. Solid state speed controls are available for a range of applications up to 15 amps. Speed controls can be used to operate more than one fan if the combined total amperage of the fans does not exceed the control rating.

**Model 5WSSC** - For use w/ shaded pole and PSC motors.  
 Available shipped loose or mounted internal or external.  
 • Rated for 115 - 127v, 5 Amp • UL Listed  
 • Require a 2x4 handy box

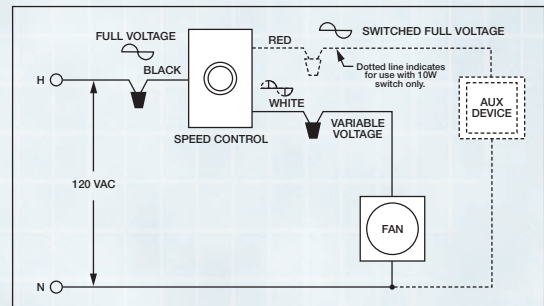
**Model 5W240** - For use w/ shaded pole and PSC motors.  
 Available shipped loose or mounted internal or external.  
 • Rated for 220 - 240v, 5 Amp • UL Listed  
 • Requires 2x4 handy box

**Model 5W277** - For use w/ shaded pole and PSC motors.  
 Available shipped loose or mounted internal or external.  
 • Rated for 277v, 5 Amp • UL Listed  
 • Requires 2x4 handy box

**Model 8WSSC** - For use w/ shaded pole and PSC motors.  
 Available shipped loose or mounted internal or external.  
 • Rated for 220 - 240v, 8 Amp • UL Listed  
 • Requires 2x4 handy box

**Model 10WSSC** - For use w/ shaded pole and PSC motors.  
 Available shipped loose or mounted internal or external.  
 • Rated for 115 - 127v, 10 Amp • UL Listed  
 • Requires 4x4 handy box

**Model 15WSSC** - For use w/ shaded pole and PSC motors.  
 Available shipped loose or mounted internal or external.  
 • Rated for 115 - 127v, 15 Amp • UL Listed  
 • Requires 4x4 handy box

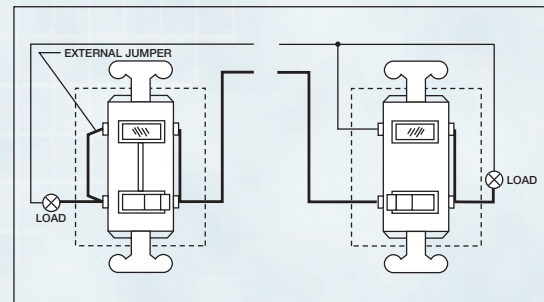


## Switches

Switches may be used on Models SP and CSP fans to enable manual control of your fan or fan/light combination. There are several options to fit your application.



- NEMA 1** - Single pole rocker switch assembly.  
 • Rated for, 115v, 15 Amp, 1/2 Hp • UL Listed
- Model MS-16** - Single pole rocker switch assembly with cover and pilot light.  
 • Rated for, 115v, 15 Amp, 1/2 Hp • UL Listed
- NEMA 1** - Two pole rocker switch assembly.  
 • Rated for, 220/230/240/277v, 20 Amp, 2 Hp • UL Listed  
 • Requires a 2x4 handy box.

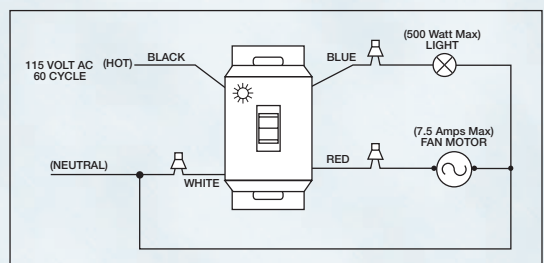


## Time Delay Switch

Time delay switches save energy by automatically turning off equipment. They may be used with Models SP and CSP fans and fan/light combinations, for extended operating time of fan. Time delay switches act in the same manner as a standard switch, however, there is a delay of 1 to 60 minutes after the it has been turned off.



- Model GTD** - Single switch controls both fan and light. Available shipped loose.  
 • Silent Operation • Rated for 115v  
 • UL Listed • Requires 2x4 handy box





## Motion Detectors

Motion detectors may be used with Models SP and CSP fans, or fan and light combinations. Motion detectors use a passive infrared motion detector that will automatically turn on the fan when a change in temperature is sensed. They have a viewing area of 180 degrees, however they must be placed in the line-of-sight. They also have an adjustable time delay shutoff setting of 1 to 20 minutes.

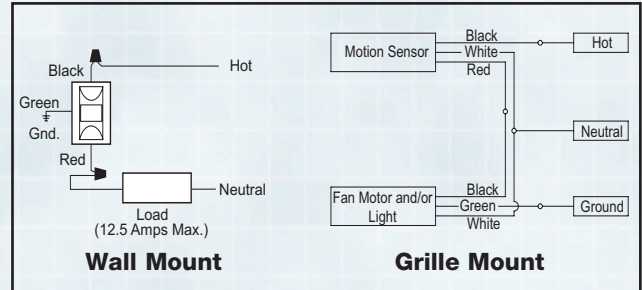
Grille Motion Detectors are available on models up through size SP-A390 and SP-B200.

- Rated for 115v
- UL Listed

### Model MDW

For use on fan or lights. Available shipped loose.

- Rated for 115v
- UL Listed
- Requires 2x4 handy box



## Transformers

Transformers are available for applications requiring voltage reduction. Selection is based on motor amperage. All transformers are shipped loose.



### Model T-2.0 - UL Listed

- Rated for 230/277v to 115, 2 Amps

### Model T-4.3 - UL Listed

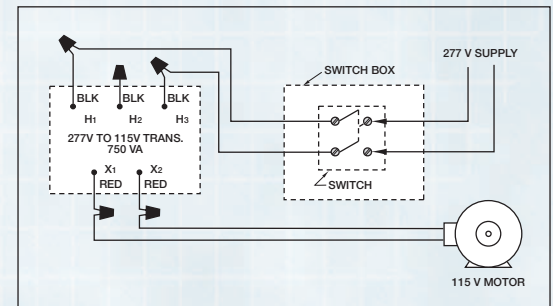
- Rated for 230/277v to 115, 4.3 Amps

### Model T-6.5 - UL Listed

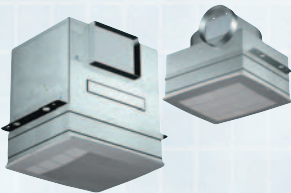
- Rated for 230/277v to 115, 6.5 Amps

### Model T-8.6 - UL Listed

- Rated for 230/277v to 115, 8.6 Amps



## Ceiling Radiation Dampers



The Greenheck SP-A and SP-B ceiling radiation dampers are UL Classified, rated at three to four hours fire resistance, and is available on all SP-A and SP-B fans and fan/light combinations. This design saves space by allowing the damper to mount directly beneath the fan.

SP Model	CRD	Length	Width	Height
A50 - A190	310	13 <sup>1</sup> / <sub>2</sub>	11 <sup>1</sup> / <sub>8</sub>	3
B50 - B200	320	14 <sup>3</sup> / <sub>8</sub>	12 <sup>1</sup> / <sub>4</sub>	3
A200 - A390				
A410 - A510	350	18 <sup>7</sup> / <sub>16</sub>	14 <sup>15</sup> / <sub>16</sub>	3
A710 - A780				
A - 700	700	24 <sup>3</sup> / <sub>16</sub>	12 <sup>1</sup> / <sub>4</sub>	3
A900 - A1550	360	24 <sup>3</sup> / <sub>16</sub>	14 <sup>15</sup> / <sub>16</sub>	3

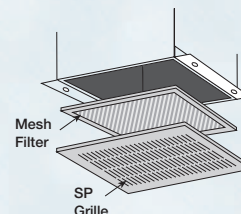
All dimensions shown in inches. Add an "L" to all CRD models if fan & light combo is used.

## Filters

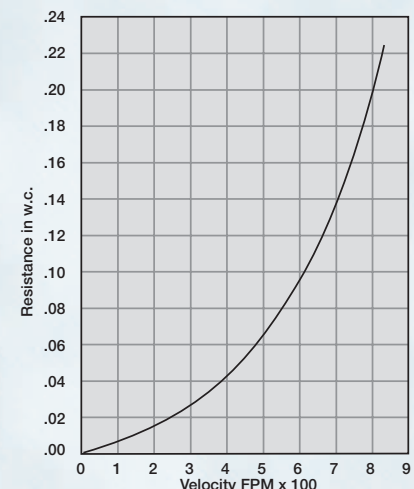
Fans used in most applications, even where air is not excessively dirty, will collect airborne dirt on wheels and motors over time. Accumulations of dirt on the fan wheel will sharply reduce performance and cause imbalance. Dirt buildup on the motor can cause it to overheat. All of these conditions will shorten the life of the fan. To help reduce this accumulation, washable aluminum mesh filters are available to trap dirt before it enters the fan. These filters should be regularly cleaned to maintain performance. The Filter Loss Chart shows the effect the filter will have on performance. To determine the added resistance, divide the desired cfm by the filter area (ft<sup>2</sup>). This will give FPM. Use this with the filter loss chart to get the added resistance. In addition to reducing dirt accumulations on the motor and wheel, filters also reduce sound levels.

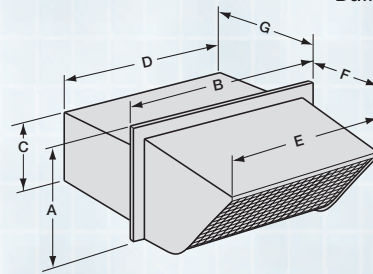
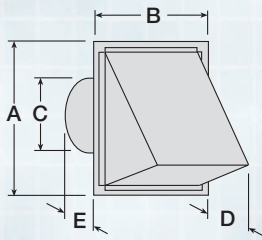
SP Model	Filter Model		Filter Area (ft <sup>2</sup> )
	Designer Grill	*Metal Grille	
SP-A50 - A190	F-200	F-210	.620
SP-B50 - B200, A200 - A390	F-200	F-220	.785
SP-A410 - A510	NA	F-250	1.319
SP-A710 - A780			
SP-A900 - A155	NA	F-260	1.797

All dimensions shown in inches. \*Aluminium or Stainless Steel Grille.



**FILTER LOSS CHART**





## Model WC (Round Connection) Hooded Wall Cap

- Aluminum construction - aluminum finish
- For outside wall applications
- Built in birdscreen (not available on WC-4) and damper

Model	For use with sizes	A	B	C	D	E
WC-4	C50, B50-B80	6 <sup>1</sup> / <sub>2</sub>	6	4	2 <sup>3</sup> / <sub>4</sub>	5
WC-6	B90-B200 A50-A190	8	8	6	4 <sup>1</sup> / <sub>8</sub>	5
WC-8	A200-A510	11	11	8	5 <sup>1</sup> / <sub>8</sub>	3.5

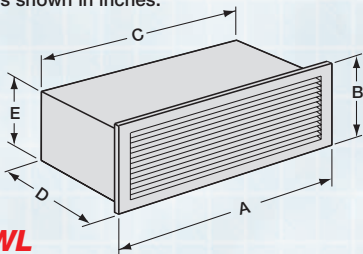
All dimensions shown in inches.

## Model WC (Square/Rectangular Connections) Hooded Wall Cap

- Steel construction with black enamel finish
- For outside wall applications
- Built in birdscreen and damper

Model	For use with sizes	A	B	C	D	E	F	G
WC-10x3	50-290	5 <sup>1</sup> / <sub>2</sub>	12 <sup>3</sup> / <sub>4</sub>	3 <sup>1</sup> / <sub>2</sub>	10 <sup>1</sup> / <sub>4</sub>	11 <sup>1</sup> / <sub>8</sub>	4 <sup>1</sup> / <sub>4</sub>	5
WC-8x8	200-510	10 <sup>1</sup> / <sub>4</sub>	10 <sup>1</sup> / <sub>4</sub>	8 <sup>1</sup> / <sub>4</sub>	8 <sup>1</sup> / <sub>4</sub>	8 <sup>1</sup> / <sub>4</sub>	6 <sup>3</sup> / <sub>4</sub>	5
WC-18x8	700-1550	10 <sup>1</sup> / <sub>4</sub>	20 <sup>1</sup> / <sub>4</sub>	8 <sup>1</sup> / <sub>4</sub>	18 <sup>1</sup> / <sub>4</sub>	18 <sup>1</sup> / <sub>4</sub>	6 <sup>3</sup> / <sub>4</sub>	5

All dimensions shown in inches.

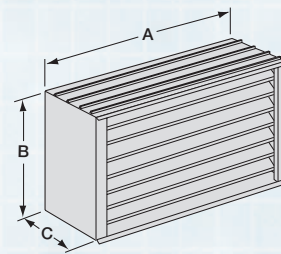


## Model WL Wall Louvered Discharge

- Anodized aluminum grille
- Built in damper
- Not recommended for exterior applications exposed to severe weather conditions. An external wall louver is recommended for such applications.

Model	For use with sizes	A	B	C	D	E
WL-10x3	50-290	12	5 <sup>1</sup> / <sub>4</sub>	10	7 <sup>3</sup> / <sub>4</sub>	3 <sup>1</sup> / <sub>2</sub>
WL-18x6	390-1550	19 <sup>3</sup> / <sub>4</sub>	8	18	9	6

All dimensions shown in inches.



## Model BVE Brick Vent

- Designed for installation in masonry walls
- Anodized aluminum construction
- Built in aluminum mesh insect screen

Model	For use with sizes	A	B	C
BVE808	50-290	8 <sup>1</sup> / <sub>8</sub>	7 <sup>3</sup> / <sub>4</sub>	4
BVE128	390-510	12	7 <sup>3</sup> / <sub>4</sub>	4
BVE157	700-1050	15 <sup>5</sup> / <sub>8</sub>	7 <sup>3</sup> / <sub>4</sub>	4

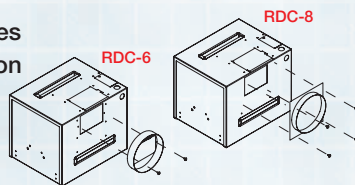
All dimensions shown in inches.

## Model RDC Round Duct Connector

- Replaces the standard square discharge duct-connector and damper
- Uses existing mounting holes
- Galvanized steel construction
- RDC-6 includes a damper
- RDC-8 **does not** include a damper

Model	For use with sizes	Dia.
RDC-6	A110-A190	6
RDC-8	A200-A510	8

All dimensions shown in inches.

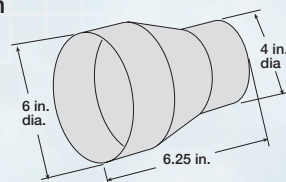


## Model TR 6x4 Transition Duct Reducer

- Reduces duct from 6 to 4 inches.
- Galvanized steel construction

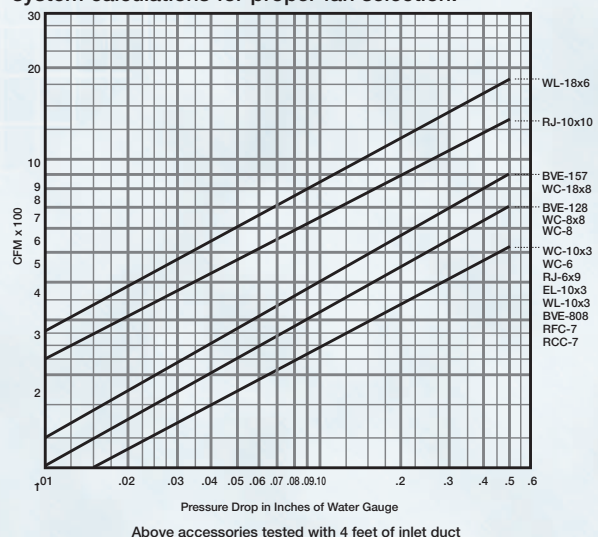
Model	For use with sizes
TR 6x4	B50-B200
	A50-A90
	A110-A190*

\* Used in conjunction with RDC-6.



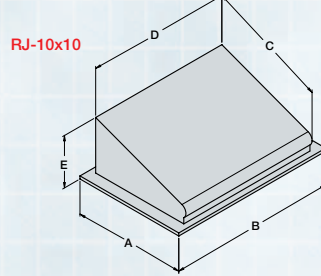
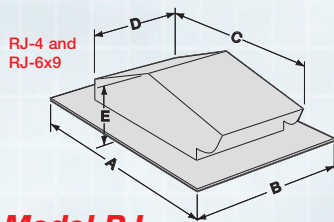
## ACCESSORY PRESSURE DROPS

The chart below can be used with all of the discharge accessories shown on these two pages. Specific pressure drop values for these accessories must be included in total system calculations for proper fan selection.





# Roof Discharge Accessories

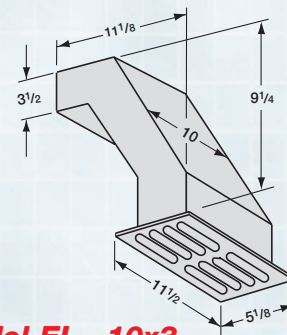


## Model RJ Pitched Roof Cap

- Steel construction with black enamel finish
- Integral flashing flange
- Built in birdscreen and damper

Model	For use with sizes	A	B	C	D	E	Throat
RJ-4	C50, B50-B80	11	9 <sup>1</sup> / <sub>4</sub>	8 <sup>1</sup> / <sub>4</sub>	5 <sup>5</sup> / <sub>16</sub>	4 <sup>1</sup> / <sub>2</sub>	4 in. Dia.
RJ-6x9	B90-B200 A50-A390	18 <sup>3</sup> / <sub>4</sub>	14 <sup>1</sup> / <sub>4</sub>	14 <sup>1</sup> / <sub>2</sub>	10 <sup>3</sup> / <sub>8</sub>	6 <sup>1</sup> / <sub>2</sub>	6x9
RJ-10x10	A410-A1050	18 <sup>1</sup> / <sub>2</sub>	27 <sup>1</sup> / <sub>2</sub>	15 <sup>3</sup> / <sub>4</sub>	23 <sup>5</sup> / <sub>8</sub>	9 <sup>1</sup> / <sub>2</sub>	10x10

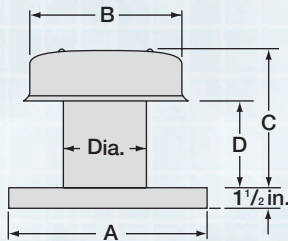
All dimensions shown in inches.



## Model EL - 10x3 Elbow Discharge with Grille

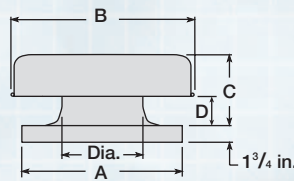
- Designed for installation under roof eaves
- Painted steel louvered grille
- Built in damper
- For SP/CSP sizes 50-290

# Flat Roof Caps



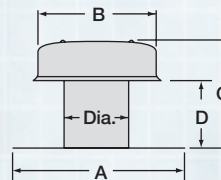
## Model RCC-7 Curb Cap

- Weathertight aluminum construction
- Integral birdscreen
- Built in curb cap
- Requires roof curb



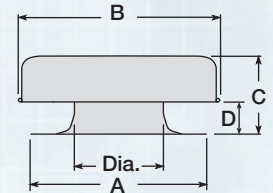
## Model GRS Curb Cap

- All aluminum exterior construction
- Galvanized steel internal supports
- Integral birdscreen
- Built in curb cap
- Requires roof curb



## Model RFC-7 Flashing Flange

- Weathertight aluminum construction
- Integral birdscreen
- Built in flashing flange



## Model GRSF Flashing Flange

- All aluminum exterior construction
- Galvanized steel internal supports
- Integral birdscreen
- Built in flashing flange

Model	For use with sizes	A	B	C	D	Throat Dia.
RCC-7	50-390	15	12	10	6 <sup>3</sup> / <sub>8</sub>	7
GRS-10	410-710	19	20 <sup>1</sup> / <sub>2</sub>	6 <sup>1</sup> / <sub>4</sub>	3	10 <sup>1</sup> / <sub>4</sub>
GRS-12	780-1050	22	29	7 <sup>7</sup> / <sub>8</sub>	3 <sup>1</sup> / <sub>4</sub>	12 <sup>1</sup> / <sub>4</sub>
GRS-16	1410-2150	26	29	8 <sup>3</sup> / <sub>4</sub>	3 <sup>3</sup> / <sub>4</sub>	16 <sup>5</sup> / <sub>16</sub>
GRS-20	3600	30	35 <sup>1</sup> / <sub>2</sub>	9 <sup>1</sup> / <sub>4</sub>	4 <sup>1</sup> / <sub>4</sub>	20 <sup>5</sup> / <sub>16</sub>

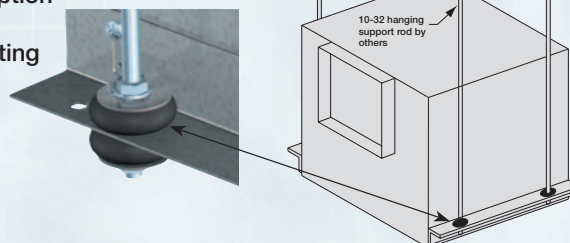
All dimensions shown in inches.

Model	For use with sizes	A	B	C	D	Throat Dia.
RFC-7	50-390	18	12	10	6 <sup>3</sup> / <sub>8</sub>	7
GRSF-10	410-710	23	20 <sup>1</sup> / <sub>2</sub>	6 <sup>1</sup> / <sub>4</sub>	3	10 <sup>1</sup> / <sub>4</sub>
GRSF-12	780-1050	26	29	7 <sup>7</sup> / <sub>8</sub>	3 <sup>1</sup> / <sub>4</sub>	12 <sup>1</sup> / <sub>4</sub>
GRSF-16	1410-2150	30	29	8 <sup>3</sup> / <sub>4</sub>	3 <sup>3</sup> / <sub>4</sub>	16 <sup>5</sup> / <sub>16</sub>
GRSF-20	3600	34	35 <sup>1</sup> / <sub>2</sub>	9 <sup>1</sup> / <sub>4</sub>	4 <sup>1</sup> / <sub>4</sub>	20 <sup>5</sup> / <sub>16</sub>

All dimensions shown in inches.

## Hanging Vibration Isolators

Vibration isolator kits are available for suspended installations. Kits include all hardware necessary to mount one unit, with the exception of 10-32 threaded rod to be supplied by others. Fan mounting brackets include prepunched mounting holes for ease of installation.



Unit Size	A	B
B50-B200	4 <sup>1</sup> / <sub>2</sub>	15 <sup>5</sup> / <sub>8</sub>
A50-A190	5 <sup>1</sup> / <sub>2</sub>	14 <sup>5</sup> / <sub>8</sub>
A200-A390	6 <sup>3</sup> / <sub>4</sub>	15 <sup>1</sup> / <sub>2</sub>
A410, A510 A710, A780	9 <sup>1</sup> / <sub>4</sub>	19 <sup>5</sup> / <sub>8</sub>
A700	5 <sup>1</sup> / <sub>2</sub>	25 <sup>1</sup> / <sub>8</sub>
A900-A1050 A1410-A1550	9 <sup>1</sup> / <sub>4</sub>	25 <sup>3</sup> / <sub>8</sub>
A1750, A2150	9 <sup>1</sup> / <sub>4</sub>	36 <sup>3</sup> / <sub>4</sub>
A3600	9 <sup>1</sup> / <sub>4</sub>	48 <sup>5</sup> / <sub>8</sub>

All dimensions shown in inches.

# PREMIUM CEILING FAN



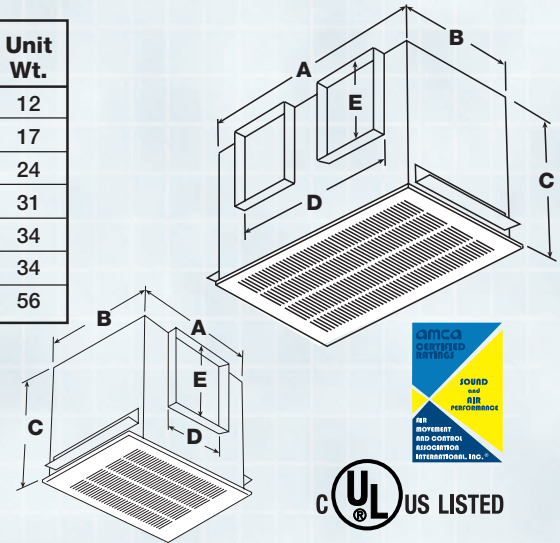
**SP**

**A**

## Dimensional Data

Model	A	B	C	D	E	Standard Grille	Decorative Grille	Unit Wt.
50, 70, 90	13 <sup>1</sup> / <sub>4</sub>	10 <sup>5</sup> / <sub>8</sub>	11 <sup>5</sup> / <sub>8</sub>	6	DIA.	14 <sup>7</sup> / <sub>8</sub> x 13 <sup>1</sup> / <sub>4</sub>	15 1/4 sq.	12
110, 125, 190	13 <sup>1</sup> / <sub>4</sub>	10 <sup>5</sup> / <sub>8</sub>	10 <sup>1</sup> / <sub>2</sub>	8	6	14 <sup>7</sup> / <sub>8</sub> x 13 <sup>1</sup> / <sub>4</sub>	15 1/4 sq.	17
200, 250, 290, 390	14	11 <sup>7</sup> / <sub>8</sub>	11 <sup>1</sup> / <sub>4</sub>	8	8	14 <sup>7</sup> / <sub>8</sub> x 13 <sup>1</sup> / <sub>4</sub>	15 1/4 sq.	24
410, 510	18	14 <sup>3</sup> / <sub>8</sub>	14 <sup>1</sup> / <sub>2</sub>	8	8	19 <sup>3</sup> / <sub>8</sub> x 16 <sup>3</sup> / <sub>8</sub>	-	31
700	23 <sup>5</sup> / <sub>8</sub>	11 <sup>5</sup> / <sub>8</sub>	11 <sup>5</sup> / <sub>8</sub>	19 <sup>1</sup> / <sub>2</sub>	8	25 <sup>1</sup> / <sub>8</sub> x 13 <sup>1</sup> / <sub>2</sub>	-	34
710, 780	18	14 <sup>3</sup> / <sub>8</sub>	14 <sup>1</sup> / <sub>2</sub>	10	8	19 <sup>3</sup> / <sub>8</sub> x 16 <sup>3</sup> / <sub>8</sub>	-	34
900, 1050, 1410, 1550	23 <sup>3</sup> / <sub>4</sub>	14 <sup>3</sup> / <sub>8</sub>	14 <sup>1</sup> / <sub>2</sub>	18 <sup>3</sup> / <sub>4</sub>	8	25 x 16 <sup>3</sup> / <sub>8</sub>	-	56

Outlet connection width is 1 inch - Mounting bracket width is 1 1/2 inch.  
For complete dimensional information, see CAPS submittal drawings.  
All dimensions are in inches.



## Performance Data

Model	RPM	Amps	Watts	HVI <sup>1</sup> Sones	CFM/Static Pressure in inches of WG										
					0.000	0.100	0.125	0.250	0.375	0.500	0.625	0.750	1.000		
2,3,5 SP-A50	700	0.31	18	0.7	CFM	76	51	47	30						
					Sones	0.7	1.0	1.1	1.8						
2,3,5 SP-A70	850	0.27	20	0.8	CFM	83	70	66	42						
					Sones	1.1	1.1	1.4	2.2						
2,3,5 SP-A90	900	0.34	29	1.0	CFM	99	88	84	61	25					
					Sones	1.1	1.4	1.4	1.7	1.9					
2,3,4,5,6 SP-A110	950	0.58	49	0.8	CFM	119	110	106	88						
					Sones	1.3	1.2	1.2	1.6						
2,3,5,6 SP-A125	1100	0.62	53	1.2	CFM	135	123	121	104						
					Sones	1.4	1.7	1.8	1.9						
3,4,5,6 SP-A190	1400	1.30	113	2.0	CFM	216	197	192	167	133					
					Sones	3.2	2.8	2.9	3.1	3.4					
3,5 SP-A200	900	0.43	48	2.0	CFM	247	225	220	196	172	142	105	67		
					Sones	2.0	2.3	2.4	3.0	3.5	4.1	4.6	4.5		
3,5 SP-A250	1000	0.77	83	2.0	CFM	272	251	246	227	210	185	157	119		
					Sones	2.9	3.0	3.0	3.4	4.4	4.6	4.9	5.2		
3,4,5 SP-A290	1050	0.72	81	2.5	CFM	315	293	287	257	231	207	175	124		
					Sones	3.2	3.3	3.3	3.6	3.9	4.1	4.5	5.5		
3,4,5 SP-A390	1350	1.34	135	4.5	CFM	410	395	391	368	345	325	307	279		
					Sones	5.4	5.4	5.4	5.7	6.0	6.3	6.4	6.7		
3 SP-A410	1000	1.74	121	3.0	CFM	443	413	405	351	305					
					Sones	4.1	3.8	3.7	3.7	4.3					
3,4 SP-A510	1070	3.30	224	4.5	CFM	557	512	501	439	392	325				
					Sones	6.0	5.7	5.6	5.5	5.4	4.7				
3 SP-A700	1100	3.20	350	5.5	CFM	757	729	723	700	679	649	613	560	396	
					Sones	6.1	6.1	6.1	6.3	6.7	7.1	7.3	7.5	7.7	
3 SP-A710	1080	4.40	285	6.0	CFM	752	714	701	653	588	485	320			
					Sones	7.4	7.2	7.2	7.0	6.8	6.7	6.7			
3,4 SP-A780	1600	3.30	348	8.5	CFM	812	782	775	741	704	665	625	581		
					Sones	10.2	10.2	10.2	9.9	9.5	9.5	9.4	9.4		
3 SP-A900	950	4.00	285	4.5	CFM	955	907	896	841	773	701				
					Sones	5.2	5.7	5.8	6.1	6.2	6.2				
3,4 SP-A1050	1095	6.30	420	6.0	CFM	1125	1059	1043	964	885	796	662			
					Sones	7.2	7.0	6.9	6.8	6.6	6.5	6.5			
3 SP-A1410	1450	7.40	786	9.5	CFM	1455	1414	1404	1353	1307	1262	1218	1174		
					Sones	11.6	11.6	11.7	11.6	11.5	11.6	11.6	11.6		
3,4 SP-A1550	1610	8.60	818	10.0	CFM	1607	1568	1558	1506	1449	1407	1369	1323		
					Sones	12.4	12.1	12.1	12.0	11.9	12.8	14.1	15.9		

1 HVI sones at 0.1 wg  
2 Available with light

3 Available with CRD - Ceiling Radiation Damper  
4 Available with 50 Hz motors (See CAPS for performance)

5 UL Listed for use above tubs.  
6 Available with 277 volt motor.

Performance certified is for Model SP exhaust for installation type B: Free inlet, Ducted outlet. Performance ratings include the effects of an inlet grille and backdraft damper. Speed (RPM) shown is nominal. Performance is based on actual speed of test. The sound ratings shown are loudness values in fan sones at 5 ft. (1.5m) in a hemispherical free field calculated per AMCA Standard 301. Values are for installation type B: free inlet fan sone levels.



# DELUXE CEILING FAN



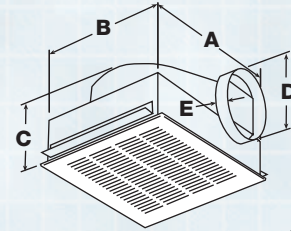
**SP**

**B**

### Dimensional Data

Model	A	B	*C	D	E	Designer Grille	Decorative Grille	Unit Wt.
50, 70, & 80	13 <sup>7</sup> / <sub>8</sub>	11 <sup>1</sup> / <sub>2</sub>	6 <sup>15</sup> / <sub>16</sub>	4	3 <sup>3</sup> / <sub>4</sub>	14 <sup>7</sup> / <sub>8</sub> x 13 <sup>1</sup> / <sub>4</sub>	15 1 <sup>1</sup> / <sub>4</sub> sq.	9
90, 110, 150, 200	13 <sup>7</sup> / <sub>8</sub>	11 <sup>1</sup> / <sub>2</sub>	7 <sup>15</sup> / <sub>16</sub>	6	1 <sup>1</sup> / <sub>4</sub>	14 <sup>7</sup> / <sub>8</sub> x 13 <sup>1</sup> / <sub>4</sub>	15 1 <sup>1</sup> / <sub>4</sub> sq.	10

\*Add 1 1/2 inches to C dimension for incandescent light.  
Mounting bracket width is 1 1/2 inch  
For complete dimensional information, see CAPS submittal drawings.  
All dimensions are in inches.



### Performance Data

Model	RPM	AMPS	Watts	HVI <sup>1</sup> Sones	CFM/Static Pressure in inches of WG									
					0.000	0.100	0.125	0.250	0.375	0.500	0.625	0.750	1.000	
2,3,5 SP-B50	625	0.50	38	1.4	CFM	67	53	51	40	29				
					Sones	1.7	1.9	1.9	2.6	3.5				
2,3,5 SP-B70	675	0.53	45	1.4	CFM	77	70	68	57	49	39			
					Sones	1.7	1.9	1.9	2.4	3.1	3.6			
2,3,5 SP-B80	900	0.60	54	2.5	CFM	87	80	78	68	61	54	44	30	
					Sones	2.9	2.9	3.0	3.2	3.6	4.3	5.5	5.6	
2,3,4,5 SP-B90	700	0.65	50	2.0	CFM	102	92	88	75	59	45	30		
					Sones	1.9	2.6	2.7	3.0	3.6	4.1	4.9		
2,3,4,5,6 SP-B110	950	1.14	80	1.5	CFM	133	114	110	97	95	94	91	85	50
					Sones	2.0	2.1	2.2	2.4	2.7	2.8	3.6	4.4	5.4
2,3,4,5,6 SP-B150	1050	1.70	129	2.5	CFM	160	156	155	154	152	149	147	138	92
					Sones	3.0	3.3	3.3	3.7	4.3	4.5	5.0	5.3	5.8
3,4,5,6 SP-B200	1100	2.20	173	4.0	CFM	197	195	194	191	187	184	181	166	128
					Sones	4.4	4.6	4.7	5.1	5.6	5.8	6.0	6.3	6.6

1 HVI sones at 0.1 wg      3 Available with CRD - Ceiling Radiation Damper      5 UL Listed for use above tubs.  
2 Available with light      4 Available with 50 Hz motors (See CAPS for performance)      6 Available with 277 volt motor.

Performance certified is for Model SP exhaust for installation type B: Free inlet, Ducted outlet. Performance ratings include the effects of an inlet grille and backdraft damper. Speed (RPM) shown is nominal. Performance is based on actual speed of test. The sound ratings shown are loudness values in fan sones at 5 ft. (1.5m) in a hemispherical free field calculated per AMCA Standard 301. Values are for installation type B: free inlet fan some levels.

# STANDARD CEILING FAN



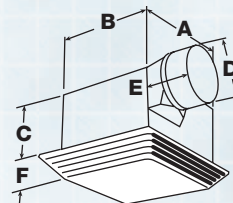
**SP**

**C**

### Dimensional Data

Model	A	B	C	D	E	F	Grille	Wt.
50	7 <sup>1</sup> / <sub>2</sub>	7 <sup>1</sup> / <sub>2</sub>	3 <sup>5</sup> / <sub>8</sub>	3	1 <sup>5</sup> / <sub>8</sub>	1/2	9 <sup>1</sup> / <sub>4</sub> x 9	5

For complete dimensional information, see CAPS submittal drawings.  
All dimensions are in inches.



### Performance Data

Model	RPM	AMPS	Watts	CFM/Static Pressure in inches of WG							
				0.00	0.100	0.125	0.250	0.375	0.500	0.625	
SP-C50	1680	0.80	46	CFM	52	49	48	46	43	37	29
				Sones	2.9	3.6	3.6	3.9	4.2	4.8	6.3

Performance certified is for Model SP exhaust for installation type B: Free inlet, Ducted outlet. Performance ratings include the effects of an inlet grille and backdraft damper. Speed (RPM) shown is nominal. Performance is based on actual speed of test. The sound ratings shown are loudness values in fan sones at 5 ft. (1.5m) in a hemispherical free field calculated per AMCA Standard 301. Values are for installation type B: free inlet fan some levels.

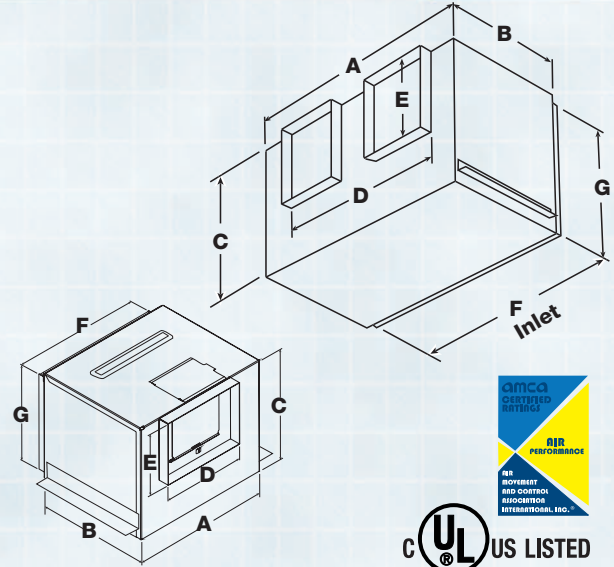


**PREMIUM INLINE FAN**

**Dimensional Data**

Model	A	B	C	D	E	F	G	Wt.
110, 125, 190	13 <sup>1</sup> / <sub>4</sub>	10 <sup>5</sup> / <sub>8</sub>	10 <sup>1</sup> / <sub>2</sub>	8	6	12	9 <sup>1</sup> / <sub>4</sub>	16
200, 250, 290, 390	14	11 <sup>7</sup> / <sub>8</sub>	11 <sup>1</sup> / <sub>4</sub>	8	8	12 <sup>7</sup> / <sub>8</sub>	10	23
410, 510	18	14 <sup>3</sup> / <sub>8</sub>	14 <sup>1</sup> / <sub>2</sub>	8	8	16 <sup>7</sup> / <sub>8</sub>	13 <sup>1</sup> / <sub>4</sub>	36
700	23 <sup>5</sup> / <sub>8</sub>	11 <sup>5</sup> / <sub>8</sub>	11 <sup>5</sup> / <sub>8</sub>	19 <sup>1</sup> / <sub>2</sub>	8	22 <sup>5</sup> / <sub>8</sub>	10 <sup>1</sup> / <sub>2</sub>	34
710, 780	18	14 <sup>3</sup> / <sub>8</sub>	14 <sup>1</sup> / <sub>2</sub>	10	8	16 <sup>7</sup> / <sub>8</sub>	13 <sup>1</sup> / <sub>4</sub>	36
900, 1050, 1410, 1550	23 <sup>3</sup> / <sub>4</sub>	14 <sup>3</sup> / <sub>8</sub>	14 <sup>1</sup> / <sub>2</sub>	18 <sup>3</sup> / <sub>4</sub>	8	22 <sup>5</sup> / <sub>8</sub>	13 <sup>1</sup> / <sub>4</sub>	59
1750, 2150	35	14 <sup>3</sup> / <sub>4</sub>	14 <sup>3</sup> / <sub>4</sub>	28	6	32 <sup>3</sup> / <sub>4</sub>	13	68
3600	45 <sup>1</sup> / <sub>2</sub>	16 <sup>1</sup> / <sub>2</sub>	16 <sup>1</sup> / <sub>2</sub>	40	11	43 <sup>1</sup> / <sub>4</sub>	14 <sup>5</sup> / <sub>8</sub>	122

Inlet and outlet connections widths are 1 inch - Mounting bracket width is 1 1/2 inch  
For complete dimensional information, see CAPS submittal drawings.  
All dimensions are in inches.



**Performance Data**

Model	RPM	AMPS	Watts	CFM/Static Pressure in inches of WG										
					0.000	0.100	0.125	0.250	0.375	0.500	0.625	0.750	1.000	
<sup>4,6</sup> CSP-A110	950	0.62	51	CFM	124	112	110	102	77					
				Sones	1.1	1.1	1.1	1.3	1.3					
<sup>6</sup> CSP-A125	1100	0.63	55	CFM	138	126	124	113	91					
				Sones	1.4	1.4	1.3	1.4	1.7					
<sup>4,6</sup> CSP-A190	1400	1.10	100	CFM	215	202	198	180	159	121				
				Sones	2.3	2.0	2.2	2.7	2.9	3.0				
CSP-A200	900	0.43	48	CFM	254	230	225	203	177	145	109	70		
				Sones	0.8	0.7	0.8	1.3	1.5	1.9	2.2	2.1		
CSP-A250	1000	0.79	83	CFM	266	246	241	221	205	187	165	132		
				Sones	1.3	1.5	1.5	2.3	3.3	3.4	3.2	3.0		
CSP-A290	1050	0.71	80	CFM	318	299	292	265	248	229	201	144		
				Sones	1.6	1.7	1.8	2.6	3.3	4.0	3.7	3.4		
<sup>4</sup> CSP-A390	1350	1.33	144	CFM	412	400	397	382	363	339	324	309		
				Sones	2.8	2.7	2.8	3.2	3.7	4.7	5.5	6.5		
CSP-A410	1000	1.87	139	CFM	447	411	403	364	316	217				
				Sones	2.2	2.1	2.2	2.5	2.7	2.7				
CSP-A510	1070	3.11	217	CFM	545	514	506	464	405	324				
				Sones	3.1	2.9	2.8	2.8	2.7	3.1				
CSP-A700	1100	3.20	350	CFM	766	755	752	739	726	702	678	635	418	
				Sones	2.6	2.5	2.4	2.4	2.5	2.6	2.7	3.0	4.9	
CSP-A710	1080	4.40	325	CFM	737	698	688	635	566	474	334			
				Sones	3.2	3.3	3.2	3.3	2.7	2.5	2.7			
<sup>4</sup> CSP-A780	1600	3.77	405	CFM	813	783	776	741	707	671	637	603	527	
				Sones	3.8	3.6	3.6	3.5	3.4	3.5	3.6	3.8	4.3	
CSP-A900	950	4.87	328	CFM	908	852	840	782	714	631				
				Sones	1.9	2.0	2.0	2.3	2.6	2.9				
<sup>4</sup> CSP-A1050	1095	6.65	455	CFM	1182	1110	1093	1013	922	832	743			
				Sones	3.5	3.2	3.1	3.1	3.4	3.4	3.4			
CSP-A1410	1450	7.80	822	CFM	1584	1543	1533	1483	1439	1395	1345	1293	1181	
				Sones	4.2	4.0	4.0	4.1	4.2	4.3	4.5	4.6	5.0	
<sup>4</sup> CSP-A1550	1610	8.32	830	CFM	1672	1617	1604	1542	1484	1427	1367	1306	1171	
				Sones	5.8	5.4	5.3	5.4	5.4	5.1	5.1	5.2	5.8	
CSP-A1750	1130	6.60	550	CFM	1842	1767	1749	1619	1463	1283	1032	771		
				Sones	6.4	6.0	6.0	5.5	5.3	4.7	4.1	3.8		
CSP-A2150	1100	7.80	735	CFM	2249	2175	2156	2044	1900	1701	1424	1114		
				Sones	6.0	5.8	5.8	5.2	5.0	4.6	3.8	3.4		
CSP-A3600	1100	7.10	1330	CFM	3778	3653	3622	3460	3280	3091	2844	2551	1750	
				Sones	6.4	6.1	6.1	5.7	5.4	5.1	4.9	4.7	4.3	

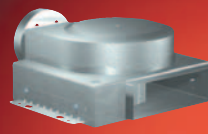
4 Units available with 50 Hz motors (See CAPS for performance)

6 Available with 277 volt motor.

Performance certified is for Model CSP inline for installation type D: Ducted inlet, Ducted outlet. Performance ratings include the effects of a backdraft damper. Speed (RPM) shown is nominal. Performance is based on actual speed of test. The sound ratings shown are loudness values in fan sones at 5 ft. (1.5m) from the test inlet duct in a hemispherical free field calculated per AMCA Standard 301. Values are for installation type D: Ducted inlet fan sone levels. Ratings do not include the effects of duct end correction. Ratings are based on 10 ft. of insulated duct. The AMCA Certified Ratings Seal applies to air performance only.



# DELUXE INLINE FAN



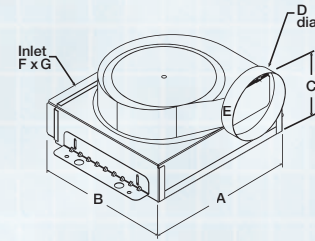
**CSP**

**B**

## Dimensional Data

Model	A	B	C	D	E	F	G	Wt.
110, 150, 200	13 <sup>7</sup> / <sub>8</sub>	11 <sup>1</sup> / <sub>2</sub>	7 <sup>15</sup> / <sub>16</sub>	6	1 <sup>1</sup> / <sub>4</sub>	10 <sup>1</sup> / <sub>4</sub>	3 <sup>1</sup> / <sub>4</sub>	10 <sup>1</sup> / <sub>4</sub>

Outlet connection width is 1 inch - Mounting bracket width is 1½ inch  
For complete dimensional information, see CAPS submittal drawings.  
All dimensions are in inches.



## Performance Data

Model	RPM	AMPS	Watts	CFM/Static Pressure in inches of WG								
					0.000	0.100	0.125	0.250	0.375	0.500	0.625	0.750
4.6 CSP-B110	950	1.14	80	CFM	103	100	99	98	97	96	93	86
				Sones	2.0	2.0	2.1	2.3	2.6	2.7	3.1	3.3
4.6 CSP-B150	1050	1.70	129	CFM	151	149	149	148	147	145	142	134
				Sones	2.5	2.7	2.7	2.9	3.1	3.4	3.6	3.9
4.6 CSP-B200	1100	2.20	173	CFM	186	184	183	182	180	178	175	169
				Sones	3.4	3.6	3.7	4.0	4.1	4.1	4.3	4.5

4 Units available with 50 Hz motors (See CAPS for performance)

6 Available with 277 volt motor.

Performance certified is for Model CSP inline for installation type D: Ducted inlet, Ducted outlet. Performance ratings include the effects of a backdraft damper. Speed (RPM) shown is nominal. Performance is based on actual speed of test. The sound ratings shown are loudness values in fan sones at 5 ft. (1.5m) from the test inlet duct in a hemispherical free field calculated per AMCA Standard 301. Values are for installation type D: Ducted inlet fan sone levels. Ratings do not include the effects of duct end correction. Ratings are based on 10 ft. of insulated duct. The AMCA Certified Ratings Seal applies to air performance only.

## Typical Specifications

### Model SP-C50

Ceiling mounted exhaust fans shall be of the centrifugal direct drive type. The fan housing shall be constructed of steel. The plastic duct collar shall be a tapered sleeve for ease of connection to 3 and 4 inch round ductwork and shall include a backdraft damper. The grille shall be constructed of non-yellowing high impact polystyrene and attached to the housing with torsion springs.

The wheels shall be constructed of high strength polymer. The access for wiring shall be external. The motor disconnect shall be internal and of the plug in type. All fans shall bear the AMCA Certified Ratings Seal for sound and air performance. Model SP-C50 shall be UL Listed. Fans shall be Model SP-C50 as supplied by Greenheck Fan Corporation, Schofield, Wisconsin.

### Models SP-B50, B70, B80, B90, B110, B150, and B200

Ceiling mounted exhaust fans shall be of the centrifugal direct drive type. The fan housing shall be constructed of steel. The steel duct collar shall be 4 inch in diameter on the B50, B70, and B80 and 6 inch in diameter on the B90, B150, and B200 to accept 4 inch and 6 inch round ductwork and shall include a backdraft damper. The designer grille shall be constructed of non-yellowing high impact polystyrene and attached to the housing with hidden attachment screws. The access for wiring shall be external. The motor disconnect shall be internal and of the plug in type.

The motor shall be mounted on vibration isolators. The fan wheel shall be of the forward curved centrifugal type, constructed of calcium carbonate filled polypropylene and dynamically balanced. All fans shall bear the AMCA Certified Ratings Seal for sound and air performance and shall be UL/cUL Listed. Ceiling or wall mount fans shall be Model SP-B50, B70, B80, B90, B110, B150 or B200 as manufactured by Greenheck Fan Corporation, Schofield, Wisconsin.

### Models SP-A50 thru A1550

Ceiling mounted exhaust fans shall be of the centrifugal direct drive type. The fan housing shall be constructed of heavy gauge galvanized steel. The housing interior shall be lined with 1/2 inch acoustical insulation. The outlet duct collar shall include an aluminum backdraft damper on all SP-A sizes and shall be spring loaded on size SP-A110 and larger. Outlet shall be adaptable for horizontal or vertical discharge. The designer grille for sizes SP-A50 through SP-A390 shall be constructed of high impact polystyrene and for sizes SP-A410 through SP-A1550, the grille shall be constructed of aluminum. Grilles shall be non-yellowing.

The access for wiring shall be external. The motor disconnect shall be internal and of the plug in type. The motor shall be mounted on vibration isolators. The fan wheel(s) shall be of the forward curved centrifugal type and dynamically balanced. All fans shall bear the AMCA Certified Ratings Seal for sound and air performance and shall be UL/cUL Listed. Ceiling or wall mount fans shall be Model SP as manufactured by Greenheck Fan Corporation, Schofield, Wisconsin.

### Models CSP-B110, B150, and B200

Duct mounted exhaust, supply or return air fans shall be of the centrifugal direct drive type. The fan housing shall be constructed of steel. The steel duct collar shall be 6 inch in diameter to accept 6 inch round ductwork and shall include a backdraft damper. The access for wiring shall be external. The motor disconnect shall be internal and of the plug in type.

The motor shall be mounted on vibration isolators. The fan wheel shall be of the forward curved centrifugal type, constructed of calcium carbonate filled polypropylene and dynamically balanced. All fans shall bear the AMCA Certified Ratings Seal for air performance and shall be UL/cUL Listed. Ceiling or wall mount fans shall be Model CSP-B110, B150 or B200 as manufactured by Greenheck Fan Corporation, Schofield, Wisconsin.

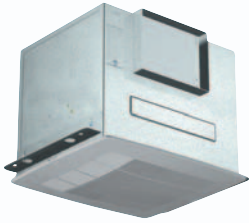
### Models CSP-A110 thru A3600

Duct mounted exhaust, supply or return air fans shall be of the centrifugal direct drive type. The fan housing shall be constructed of heavy gauge galvanized steel. The housing interior shall be lined with 1/2 inch acoustical insulation. The outlet duct collar shall include an aluminum backdraft damper and shall be adaptable for horizontal or vertical discharge. The access for wiring shall be external. The motor disconnect shall be internal and of the plug in type.

The motor shall be mounted on vibration isolators. The fan wheel(s) shall be of the forward curved centrifugal type and dynamically balanced. All fans shall bear the AMCA Certified Ratings Seal for air performance and shall be UL/cUL Listed. Ceiling or wall mount fans shall be Model CSP as manufactured by Greenheck Fan Corporation, Schofield, Wisconsin.

# Ceiling Fan Solutions

## Ceiling Fans



**SP-A110**

## Ceiling Fans w/ Light



**SP-A110**

## Ceiling Fans w/ CRD

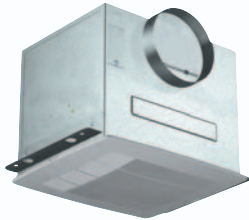


**SP-A390**

## Ceiling Fans w/ Light & CRD



**SP-A125**



**SP-A50**



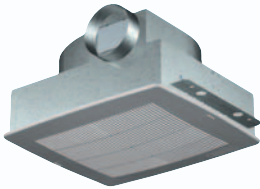
**SP-A70**



**SP-A90**



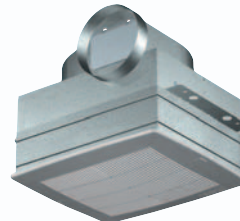
**SP-A90**



**SP-B50**



**SP-B90**



**SP-B200**



**SP-B80**

## Our Warranty

Greenheck Fan Corporation warrants its SP/CSP products to be free of any defect in material or workmanship for a period of three (3) years from the date of purchase. In the event of such a defect during the warranty period, Greenheck Fan Corporation agrees, at its option, to either repair or replace the defective product free of charge. This warranty runs to the original purchaser of such SP/CSP products for a period of three (3) years from the date of purchase. Any product repaired or replaced under this warranty will, itself, be warranted only for the remainder of the warranty period of the original product being repaired or replaced. All light bulbs are excluded under this limited warranty. Greenheck Fan Corporation is not responsible for any removal, installation, or transportation cost. For full SP/CSP warranty information visit [www.greenheck.com](http://www.greenheck.com).

*As a result of our commitment to continuous improvement, Greenheck reserves the right to change specifications without notice.*

