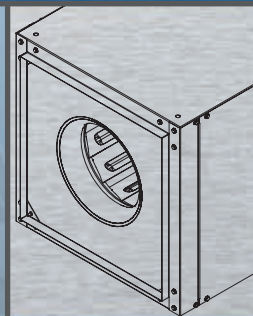
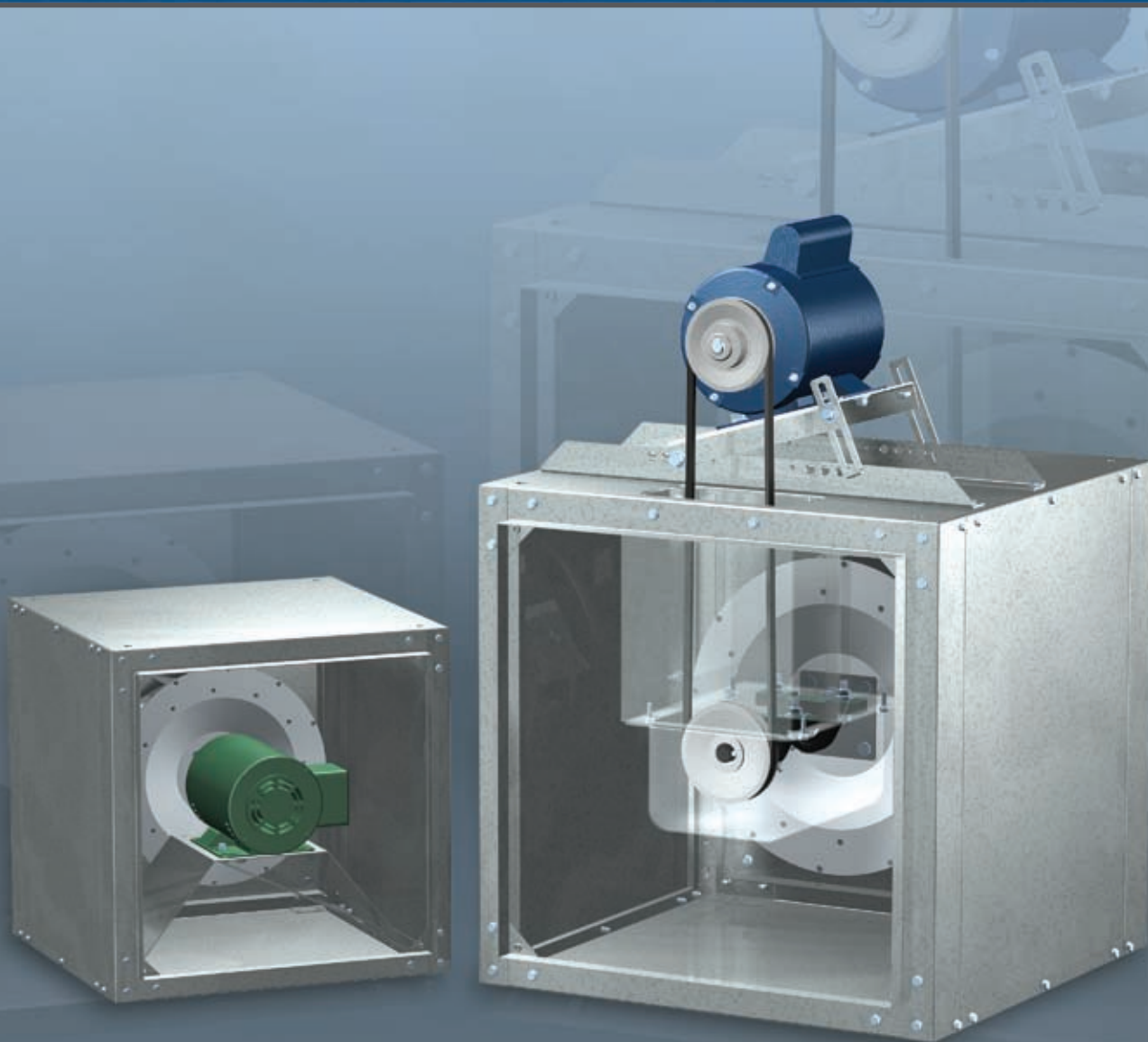


Centrifugal Inline Fans Models SQ and BSQ

Direct and Belt Drive



 **GREENHECK**
Building Value in Air.

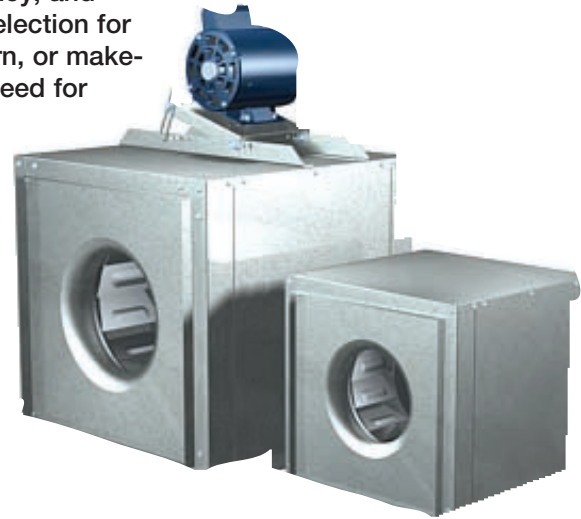
April
2008

Models SQ & BSQ Centrifugal Square Inline Duct Fans



Greenheck's model SQ and BSQ centrifugal inline fans feature a unique combination of installation flexibility, rugged construction, ease of service, high efficiency, and low sound levels. These compact inline fans are the ideal selection for indoor clean air applications including intake, exhaust, return, or make-up air systems where space is a prime consideration. The need for costly square-to-round transition pieces are eliminated reducing installation costs. The square housing design, compact size, and straight-thru airflow also give the system designer the flexibility to mount SQ and BSQ fans in any configuration - horizontal, vertical, or at any angle.

- Broadest performance in the industry, up to 4 in. wg (1,000 Pa) and 28,000 cfm (47,000 m³/hr).
- Performance as cataloged is assured. All fan sizes are tested in our AMCA Accredited Laboratory, and all models are licensed to bear the AMCA sound and air performance seals.
- UL Listed for electrical
- Greenheck subjects these products to extensive life testing, assuring you the fans will provide many years of reliable performance

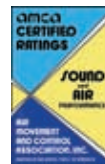


World Class Manufacturing

Greenheck's skilled production workers use cost-effective machines and unique dies, designed and built by our own engineers to add innovative features and greater strength to our centrifugal inline fans. Our advanced manufacturing processes and quality control procedures always ensure the highest product quality. And just to be sure you get the peace-of-mind you expect when you specify Greenheck, our assembly inspectors test run and monitor every fan before it leaves the factory. Results of these tests are kept in permanent records for future reference.



*UL is optional and must be specified. SQ and BSQ models are listed for electrical (UL/cUL 705) File no. E40001



Greenheck Fan Corporation certifies the model SQ and BSQ fans shown herein are licensed to bear the AMCA Seal. The ratings shown are based on tests and procedures performed in accordance with AMCA Publication 211 and Publication 311 and comply with the requirements of the AMCA Certified Ratings Program. The certified ratings for models SQ and BSQ are shown on pages 11 to 41.

The Greenheck Standard



Over the past 40 years we have listened to your needs and input to remain the industry leader.

- Each fan is tested at the factory prior to shipping. The test includes vibration check, adjusting RPM, and maximum amp draw test.
- Each fan displays a permanently stamped metal nameplate with complete model number, mark, and unique serial number for future identification.
- Packages are tested in accordance with ISTA (International Safe Transit Association) standards and procedures.

Turn to our inline fans to meet your requirements for applications in office buildings, schools, and hospitals to name a few.

Quick Delivery and Quick Build Programs



More than 40 model SQ and BSQ fans are stocked in four unique configurations within our strategically located Greenheck warehouses. Greenheck's Quick Delivery (QD) Program includes hundreds of in-stock ventilation products and accessories, available for shipment to your job site in less than 24 hours.

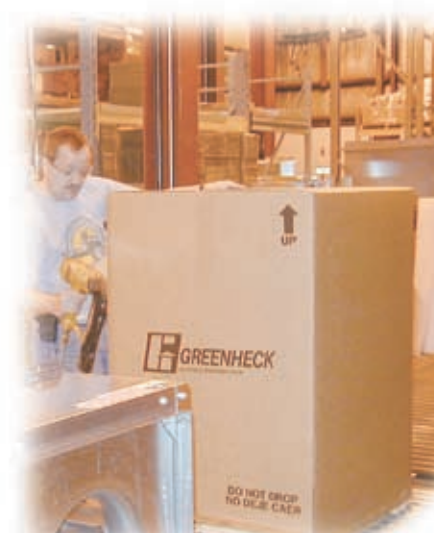
Our Quick Build (QB) Program ensures rapid response time with your needs dictating manufacturing time. Your custom product configuration can be manufactured in one, three, five, or ten days and then shipped to your job site.

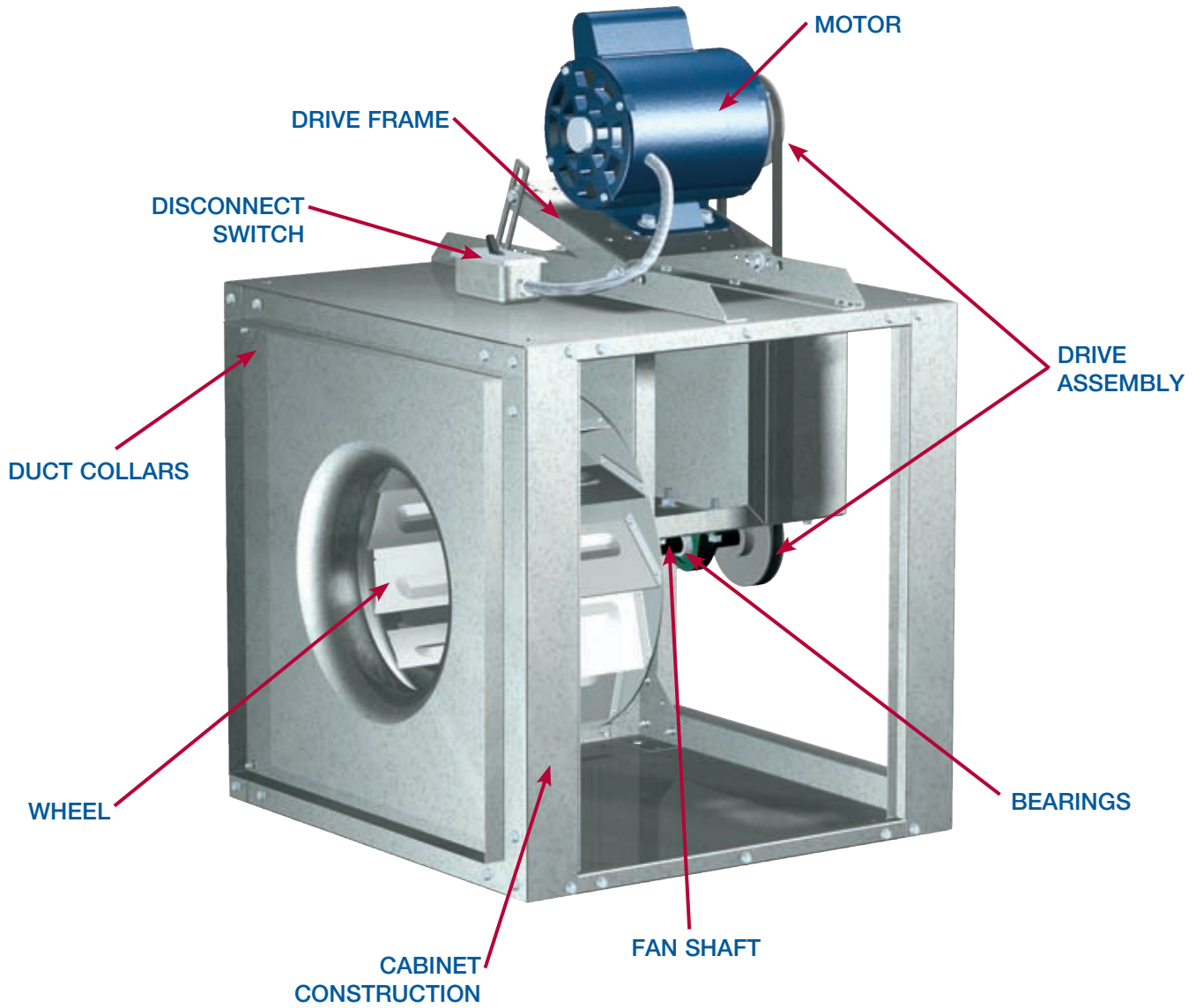
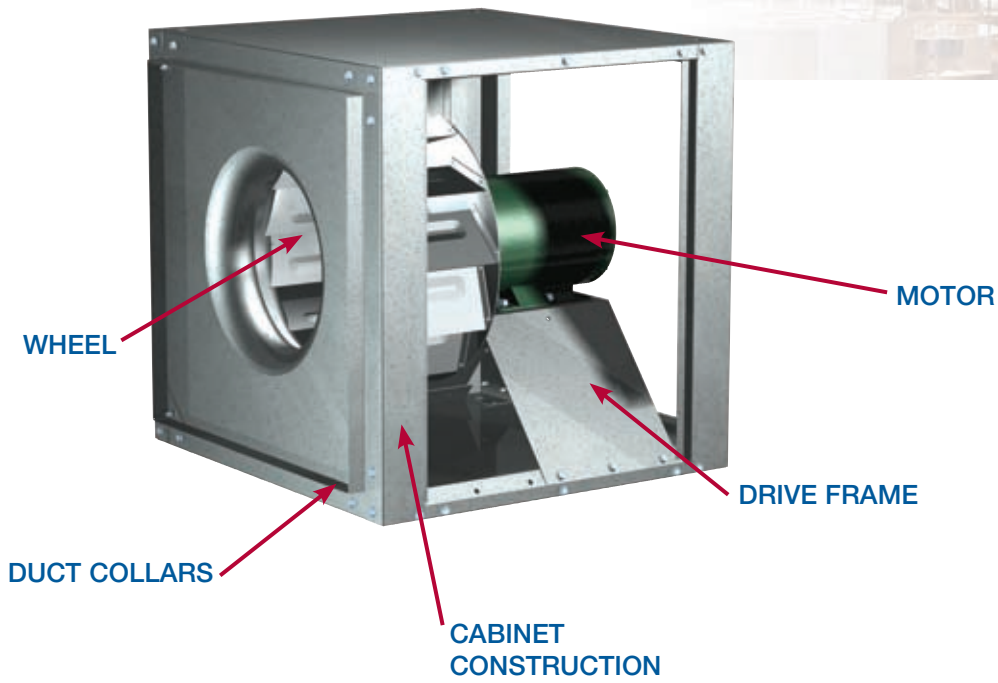
Leading Edge Technical Support



When you need extensive product or installation and operating manual (IOM) information, our products are supported by the industry's best product literature, electronic media, and computer aided product selection (CAPS) program. You'll also find this information on our website at www.greenheck.com

You can always count on personal service and expertise from our national and international representative organization. To locate your nearest Greenheck representative, call 715-359-6171 or visit our website at www.greenheck.com





Standard Construction Features



CABINET CONSTRUCTION

The fan housing is constructed of rigid structural members and formed galvanized steel panels. (Aluminum construction is optional in all SQ sizes 60-160 and in BSQ sizes 70-300.)

WHEEL

An aluminum, backward inclined, non-overloading centrifugal wheel is utilized to deliver maximum efficiency. Each wheel is statically and dynamically balanced.

DUCT COLLARS

Inlet and discharge duct collars are provided for easy duct connection. The square design provides a larger discharge area than tubular, centrifugal, and vane axial fans; outlet velocities are reduced for quieter operation.

ACCESS PANELS

The cabinet construction features two side access panels. Access panels permit easy access to all internal components. The access panels have been removed on the drawing.

DRIVE FRAME

Constructed from heavy gauge steel. Belt adjustment is accomplished by loosening fasteners, sliding the motor plate, and retightening fasteners.

MOTOR

Permanently lubricated, sealed ball bearing motors are selected to provide years of trouble-free operation with minimal maintenance.

BEARINGS

100 percent factory tested and designed specifically for air handling applications with a minimum L_{10} life in excess of 100,000 hours (L_{50} average life of 500,000 hours).

DRIVE ASSEMBLY

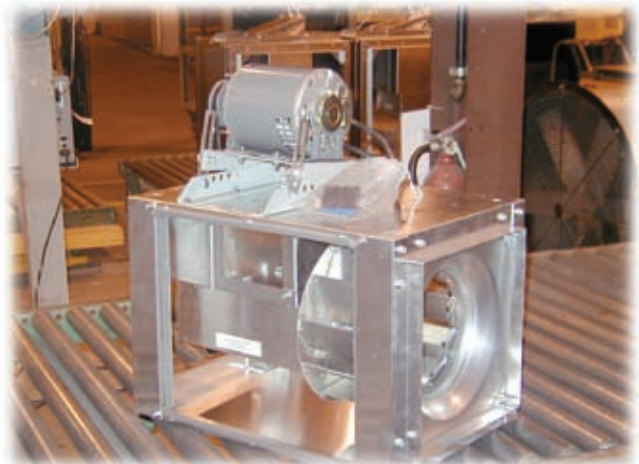
Drives are sized for a minimum of 150 percent of driven horsepower. Machined cast iron pulleys are factory set to the required RPM and adjustable for final system balancing. Belts are static free and oil resistant.

FAN SHAFT

Precisely sized, ground, and polished so the first critical speed is at least 25 percent over the maximum opportunity speed. Close tolerances where the shaft makes contact with bearings result in longer bearing life.

DISCONNECT SWITCH

NEMA-1 disconnect switch is factory mounted and wiring is provided from the motor as standard. All wiring and electrical components comply with the National Electric Codes and materials are UL Listed. Other NEMA enclosure disconnect switches are optional.



Options and Accessories

ALUMINUM CONSTRUCTION

Aluminum construction is available for all direct drive sizes 60-160 and belt drive sizes 70-300.

SPEED CONTROLLERS

Available for use with shaded pole and permanent split capacitor (PSC) open motors on model SQ fans. They provide an economical means of system balancing with direct drive fans.



INLET AND DISCHARGE GUARDS

Inlet and discharge guards provide protection for non-ducted applications. Guards are fabricated of welded wire on a galvanized steel frame. They are easily removed for maintenance and inspection.

MOTOR COVER AND BELT GUARD

For belt driven fans, combination motor cover and belt guards constructed of galvanized steel are available for protection of motors, drives, and personnel. Standard on units specified with UL.

DIRECT DRIVE MOTOR COVER

Formed, galvanized steel motor covers are available to isolate direct drive motors from the airstream. When motor covers are furnished, vents to the exterior of the fan are provided to ensure sufficient motor cooling.

GRAVITY DAMPERS

Gravity or motorized parallel blade dampers (model WD-330) are available for duct mounting. These dampers feature sturdy galvanized frames with prepunched mounting holes, aluminum blades with felt edges, and a balanced design for minimal resistance to airflow.



CONTROL DAMPERS

Square, opposed blade volume control dampers (model VCD) are available for duct mounting. These dampers feature sturdy galvanized frames with prepunched mounting holes, steel blades with vinyl seals, and flexible metal jamb seals. A balanced design results in minimal resistance to airflow.

COATINGS

Wide variety of coatings and colors are available.

Decorative coatings

are available in sixteen standard colors.

Protective coatings are available in a choice of five electrostatic applied powders providing an available selection for most environments.



All Greenheck coatings and resistance charts can be found in the performance coatings catalog.

INLET VANE

Variable inlet vane dampers (model IVDE) are available for models SQ and BSQ sizes 140-420 and are factory assembled to the fan. They can be specified for either manual or automatic operation with controls furnished by others. These dampers are constructed of heavy gauge painted steel and feature uniform blade movement for positive control. Companion inlet rings for round duct connections are also available.

INSULATED HOUSING

For noise reduction and condensation control, the interior of the fan housing can be lined with a fiberglass duct liner (1/2 and 1 in. being standard). The optional motor cover can also be insulated.

The table depicts the dB reduction that can be obtained in each octave band for the insulated housing and motor cover together.

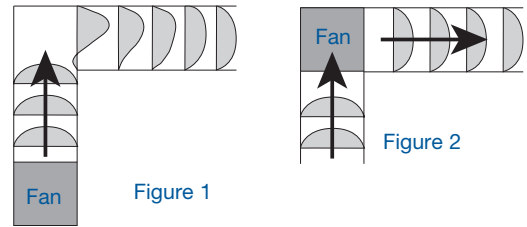
Approximate dB Sound Attenuation								
Octave Band	1	2	3	4	5	6	7	8
Sizes 60 - 130	-2	-7	-4	-4	-6	-13	-13	-9
Sizes 140 - 420	-3	-2	-5	-4	-5	-5	-7	-8

WIRING PIGTAIL

Allows direct hook-up to the power supply eliminating field wiring at the fan.

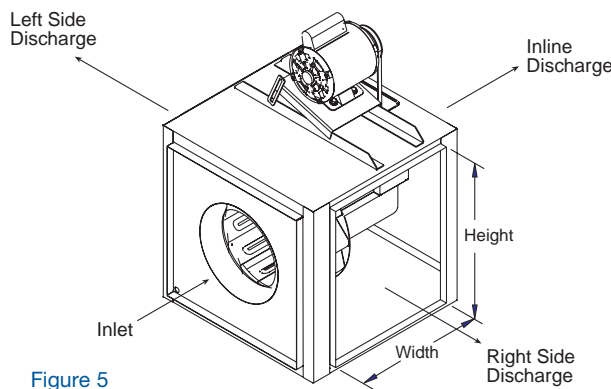
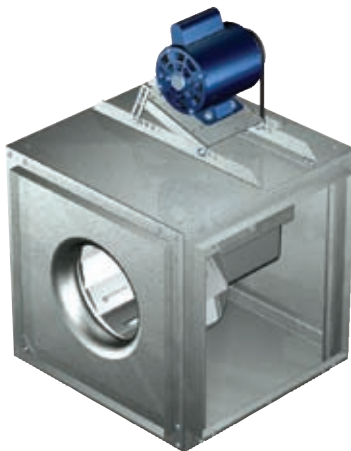
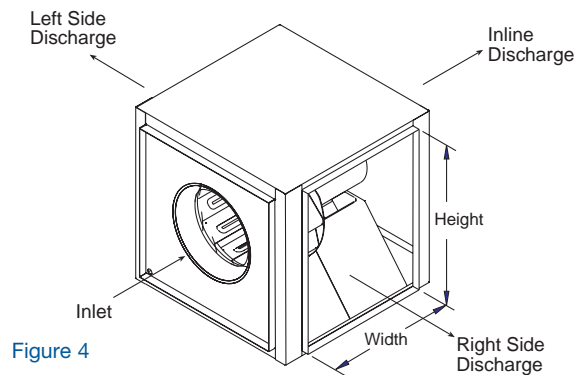
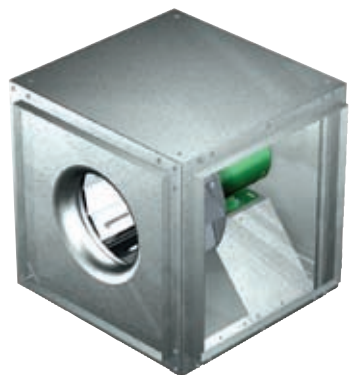
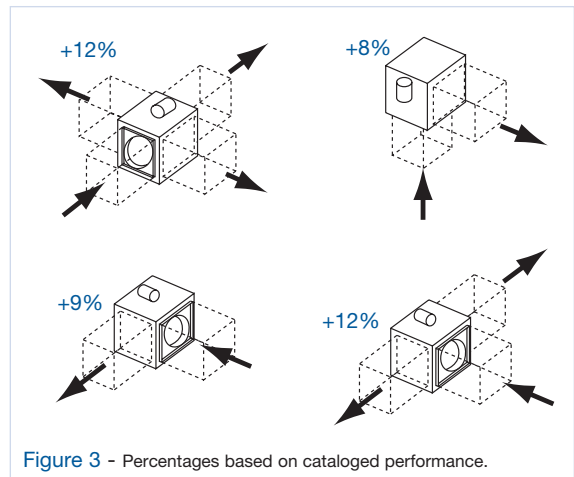
Side Discharge

The side discharge option provides several advantages including removal of a system effect problem, increasing performance, or even reducing installation labor. The most notable is reducing system effects. Notice the example in figure 1 showing the air being discharged into the corner. It will take several duct lengths before the airflow becomes smooth again after making the turn. This is not the case with a side discharge. See figure 2; when the air comes into the fan at the corner and leaves the fan at the corner, the airflow is smoother and provides a more predictable system. Remember the duct length prior to or following the installation location should be approximately two to three wheel diameters to achieve catalog performance.



Discharge Configuration

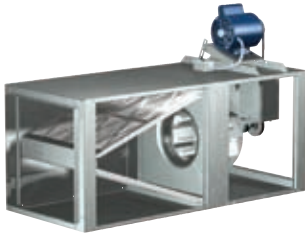
Make sure the fan discharge is oriented in the same direction as it was originally ordered. The performance will change with different discharge positions. Right side discharge will give you 108% of cataloged performance and left side will give you 109% of cataloged performance. Use figure 3 to locate the orientation to fit your application. Figures 4 and 5 explain the proper side discharge definitions. Refer to the CAPS program or consult factory for performance modifications.



SQ Side Discharge Duct Openings		
Unit Size	Width	Height
60-75	9 ⁷ / ₈ (251)	8 ⁷ / ₈ (225)
80-95	12 ⁷ / ₈ (327)	11 ⁷ / ₈ (302)
100	13 ⁷ / ₈ (352)	13 ⁷ / ₈ (352)
120	15 ⁷ / ₈ (403)	15 ⁷ / ₈ (403)
130	17 ⁷ / ₈ (454)	17 ⁷ / ₈ (454)
140	19 ⁷ / ₈ (505)	19 ⁷ / ₈ (505)
160	22 ⁷ / ₈ (581)	22 ⁷ / ₈ (581)
BSQ Side Discharge Duct Openings		
Unit Size	Width	Height
70-80-90	11 ⁷ / ₈ (302)	11 ⁷ / ₈ (302)
100	13 ⁷ / ₈ (352)	13 ⁷ / ₈ (352)
120	15 ⁷ / ₈ (403)	15 ⁷ / ₈ (403)
130-130HP	17 ⁷ / ₈ (454)	17 ⁷ / ₈ (454)
140-140HP	19 ⁷ / ₈ (505)	19 ⁷ / ₈ (505)
160-160HP	22 ⁷ / ₈ (581)	22 ⁷ / ₈ (581)
180-180HP	23 ⁷ / ₈ (606)	23 ⁷ / ₈ (606)
200-200HP	27 ⁷ / ₈ (708)	27 ⁷ / ₈ (708)
240-240HP	28 ⁷ / ₈ (733)	34 ⁷ / ₈ (886)
300-300HP	31 ⁷ / ₈ (810)	41 ⁷ / ₈ (1064)
360-360HP	32 ⁷ / ₈ (835)	37 ⁷ / ₈ (962)
420	34 ⁷ / ₈ (886)	43 ⁷ / ₈ (1114)

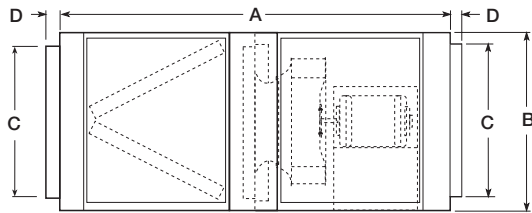
All dimensions in inches (millimeters).

Filter Options

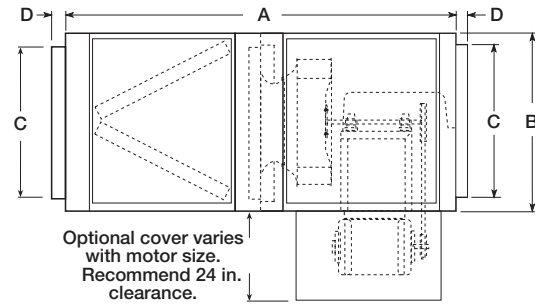


The filter box is designed to provide a compact and convenient clean air solution. Factory assembled as a single unit, this fan eliminates the costly process of designing, fabricating, and installing special remote filter box assemblies. Both the fan and filter section feature removable access panels on both sides to remove and replace filters, making fan maintenance simple and fast.

Model SQ



Model BSQ



Model	A	B	C	D	WT.	Filter Size	Filter Quantity
SQ-60 - 75	22 ¹ / ₈ (562)	12 (305)	8 ⁷ / ₈ (225)	1 (25)	40 (18)	10 x 12 (254 x 305)	1
SQ-80 - 95	45 ⁵ / ₈ (1159)	15 (381)	11 ¹ / ₈ (302)	1 (25)	74 (34)	14 x 25 (356 x 635)	1
SQ-100	47 ¹ / ₄ (1200)	17 (432)	13 ³ / ₈ (352)	1 (25)	88 (40)	16 x 20 (406 x 508)	2
SQ-120	52 ³ / ₈ (1326)	19 (483)	15 ¹ / ₈ (403)	1 (25)	114 (52)	16 x 25 (406 x 635)	2
SQ-130	46 ³ / ₈ (1178)	21 (533)	17 ¹ / ₈ (454)	1 (25)	120 (54)	20 x 20 (508 x 508)	2
SQ-140	52 ³ / ₈ (1330)	23 (584)	19 ¹ / ₈ (505)	1 (25)	174 (79)	20 x 25 (508 x 635)	2
SQ-160	51 ³ / ₈ (1305)	26 (660)	22 ¹ / ₈ (581)	1 (25)	246 (112)	20 x 20 (508 x 508)	4
BSQ-70 - 80 - 90	50 ⁵ / ₈ (1286)	15 (381)	11 ¹ / ₈ (302)	1 (25)	117 (53)	14 x 25 (356 x 635)	1
BSQ-100	47 ¹ / ₄ (1200)	17 (432)	13 ³ / ₈ (352)	1 (25)	120 (54)	16 x 20 (406 x 508)	2
BSQ-120	52 ³ / ₈ (1326)	19 (483)	15 ¹ / ₈ (403)	1 (25)	144 (79)	16 x 25 (406 x 635)	2
BSQ-130 - 130HP	46 ³ / ₈ (1178)	21 (533)	17 ¹ / ₈ (454)	1 (25)	140 (64)	20 x 20 (508 x 508)	2
BSQ-140 - 140HP	52 ³ / ₈ (1330)	23 (584)	19 ¹ / ₈ (505)	1 (25)	181 (82)	20 x 25 (508 x 635)	2
BSQ-160 - 160HP	51 ³ / ₈ (1305)	26 (660)	22 ¹ / ₈ (581)	1 (25)	294 (133)	20 x 20 (508 x 508)	4
BSQ-180 - 180HP	55 ¹ / ₈ (1399)	28 (711)	23 ³ / ₈ (606)	1 ¹ / ₂ (38)	344 (156)	20 x 25 (508 x 635)	4
BSQ-200 - 200HP	66 ¹ / ₈ (1694)	32 (813)	27 ¹ / ₈ (708)	1 ¹ / ₂ (38)	441 (200)	12 x 25 (305 x 635)	3
						16 x 25 (406 x 635)	3
BSQ-240 - 240HP	68 ³ / ₈ (1749)	39 (991)	34 ³ / ₈ (886)	1 ¹ / ₂ (38)	573 (260)	20 x 25 (508 x 635)	4
						16 x 25 (406 x 635)	4
BSQ-300 - 300HP	72 ¹ / ₈ (1832)	46 (1168)	41 ¹ / ₈ (1064)	1 ¹ / ₂ (38)	759 (344)	20 x 25 (508 x 635)	8
						16 x 25 (406 x 635)	10
BSQ-360 - 360HP	79 ¹ / ₄ (2013)	52 (1321)	47 ¹ / ₈ (1216)	1 ¹ / ₂ (38)	957 (434)	20 x 25 (508 x 635)	5
						16 x 25 (406 x 635)	5
BSQ-420	93 ³ / ₈ (2365)	58 (1473)	53 ³ / ₈ (1368)	1 ¹ / ₂ (38)	1185 (538)	16 x 25 (406 x 635)	5
						20 x 25 (508 x 635)	10

Note: 24-inch side clearance is recommended for accessing and removing filters. All dimensions in inches (millimeters) and weight (WT.) in pounds (kilograms).

Model Selection Procedure

1. Calculate system pressure drop and CFM requirements (not including filters).
2. Make a preliminary model size selection.
3. Calculate a filter pressure drop for the preliminary model size selected in step 2 using the equation:

$$P = Fx \left(\frac{\text{cfm}}{10,000} \right)^2$$

4. Add the filter pressure drop (P) to the system pressure drop and make a revised model size selection. Use the charts on the left to determine filter factor (F).

Model Size		1 in. Aluminum Filter Factor (F)	1 in. Paper Filters	2 in. Aluminum Filters	2 in. Paper Filters
SQ	BSQ				
60-65-70-75	—	186	318.06	251.1	303.18
80-85-90-95	70-80-90	21.8	37.278	29.43	35.534
100	100	8.72	14.9112	11.772	14.2136
120	120	5.58	9.5418	7.533	9.0954
130	130	5.58	9.5418	7.533	9.0954
140	140	3.57	6.1047	4.8195	5.8191
160	160	2.09	3.5739	2.8215	3.4067
—	180	1.34	2.2914	1.809	2.1842
—	200	0.77	1.3167	1.0395	1.2551
—	240	0.41	0.7011	0.5535	0.6683
—	300	0.33	0.5643	0.4455	0.5379
—	360	0.15	0.2565	0.2025	0.2445
—	420	0.13	0.2223	0.1755	0.2119

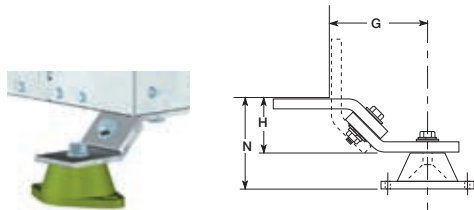
Horizontal and Vertical Mounting Options

All model SQ and model BSQ fans can be mounted either horizontally or vertically. For ease of installation, knockouts are provided at each location where mounting brackets are shown in figures 6, 7, and 8. Optional brackets are universally adjustable to mount in any of these locations.

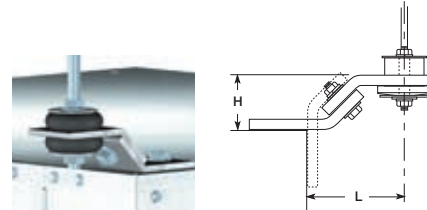
Complete isolator kits are available with either neoprene or spring isolators and are sized to match the weight of the individual fan sizes. The hanging isolator support brackets are designed to permit mounting of the fan with the motor located on top, bottom, or side. The hanging rods are to be supplied by others. The base isolator support brackets are designed to permit mounting of the fan with the motor located on top or either side.

Horizontal Hanging or Base Mount		Vertical Hanging or Base Mount	
<p>Figure 6 With a hanging mount, the motor may be located on either top or bottom. The base mount allows top motor location only. Both provide access panel on two sides.</p>	<p>Figure 7 With either a hanging or base mount the motor may be located on either side. The base mount allows top access panels only.</p>	<p>Figure 8 Mounting brackets are turned 90° for vertical mounting. Access panels are located on the two sides adjacent to mounting brackets.</p>	

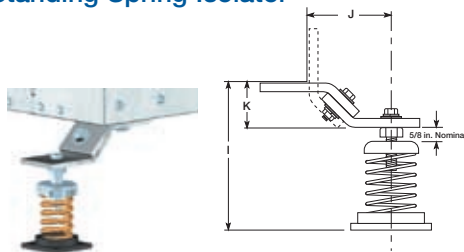
Standing Neoprene Isolator



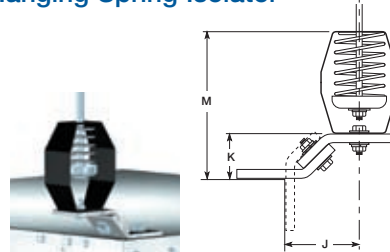
Hanging Neoprene Isolator



Standing Spring Isolator



Hanging Spring Isolator



Model	A	B	C	D	E	F	G	H	I	J	K	L	M	N
SQ 60-75	10 ⁵ / ₈ (270)	17 (432)	15 ³ / ₄ (400)	8 ⁷ / ₈ (225)	19 ³ / ₄ (502)	7 (178)								
SQ 80-95	13 ¹ / ₄ (337)	20 (508)	18 ³ / ₄ (476)	11 ¹ / ₈ (302)	43 (1092)	27 ⁵ / ₈ (695)								
BSQ 70-90	18 ⁵ / ₈ (473)	20 ⁵ / ₈ (511)	18 ³ / ₄ (476)	11 ¹ / ₈ (302)	48 ⁵ / ₁₆ (1227)	27 ⁵ / ₈ (695)	2	1 ³ / ₈	5 ¹ / ₂	2	1 ³ / ₈	2	6 ³ / ₄	2 ⁵ / ₁₆
SQ-BSQ 100	18 ⁵ / ₈ (473)	22 ¹ / ₂ (562)	20 ³ / ₄ (527)	13 ³ / ₈ (352)	44 ⁷ / ₈ (1140)	24 (610)	(51)	(35)	(140)	(51)	(35)	(51)	(171)	(59)
SQ-BSQ 120	18 ⁵ / ₈ (473)	24 (610)	22 ³ / ₄ (578)	16 (406)	49 ³ / ₈ (1254)	28 ¹ / ₂ (714)								
SQ-BSQ 130	18 ⁵ / ₈ (473)	26 ¹ / ₈ (664)	24 ³ / ₄ (629)	17 ⁷ / ₈ (454)	44 (1118)	23 (584)								
SQ-BSQ 140	19 ⁵ / ₈ (498)	28 ¹ / ₂ (714)	26 ³ / ₄ (679)	19 ⁵ / ₈ (505)	50 ¹ / ₁₆ (1272)	28 (711)								
SQ-BSQ 160	23 ¹ / ₂ (597)	31 (787)	29 ³ / ₄ (756)	22 ⁷ / ₈ (581)	49 ³ / ₈ (1260)	23 ⁵ / ₈ (600)								
BSQ 180	25 ¹ / ₂ (648)	33 ¹ / ₂ (851)	29 ⁹ / ₁₆ (751)	22 ³ / ₄ (578)	52 ⁹ / ₁₆ (1335)	24 ¹ / ₂ (622)								
BSQ 200	29 ¹ / ₈ (740)	37 (940)	33 ³ / ₄ (857)	26 ³ / ₄ (679)	64 ³ / ₁₆ (1630)	32 ¹ / ₄ (819)	2	1 ³ / ₈	5 ¹ / ₂	2	1 ³ / ₈	2	6 ³ / ₄	2 ⁵ / ₈
BSQ 240	31 ⁵ / ₈ (803)	44 ¹ / ₄ (1124)	40 ³ / ₄ (1035)	33 ³ / ₈ (860)	66 ¹ / ₂ (1689)	32 ¹ / ₈ (816)	(51)	(35)	(140)	(51)	(35)	(51)	(171)	(67)
BSQ 300	35 (889)	51 (1295)	47 ³ / ₄ (1213)	40 ⁷ / ₈ (1038)	69 ¹ / ₈ (1756)	31 ³ / ₈ (797)								
BSQ 360	38 ³ / ₄ (974)	57 ¹ / ₄ (1454)	53 ¹ / ₂ (1359)	46 ³ / ₄ (1187)	76 (1930)	34 ¹¹ / ₁₆ (881)								
BSQ 420	47 ¹ / ₈ (1197)	63 (1600)	59 ⁷ / ₈ (1521)	59 ⁷ / ₈ (1521)	90 ¹ / ₂ (2299)	40 ¹ / ₂ (1029)								

All dimensions in inches (millimeters).

Typical Installation



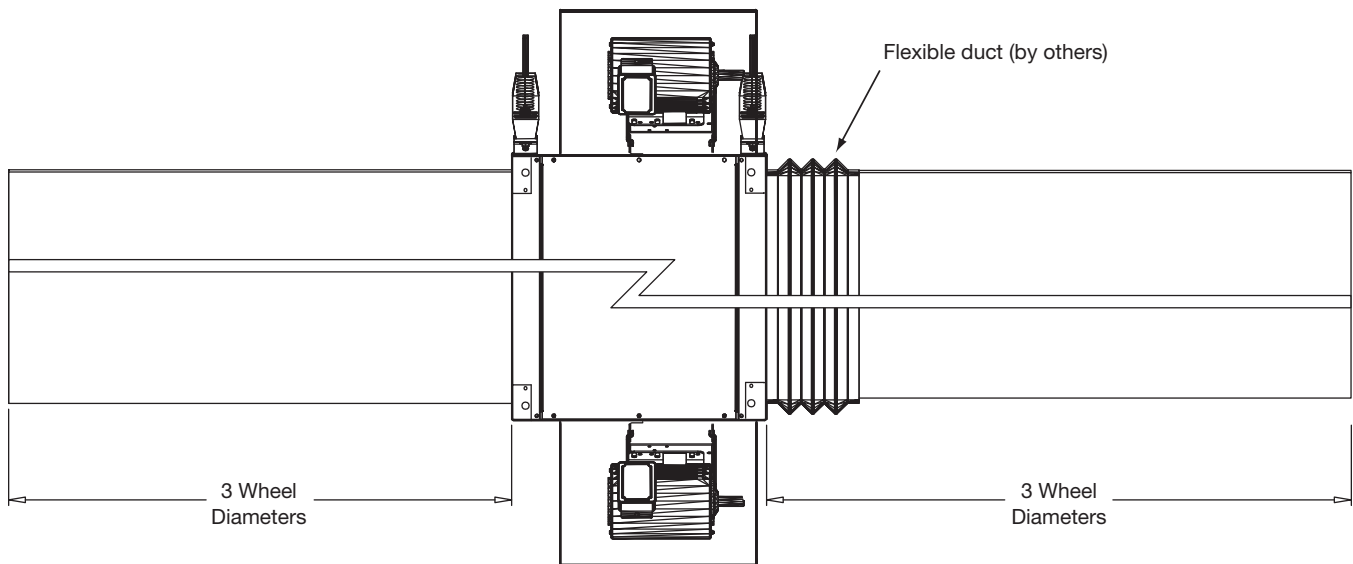
Model BSQ ducted inline fans are designed for the exhaust, supply, or recirculation of air in a building. Typical installation requires ductwork on the inlet and outlet side of the fan. A minimum of three duct diameters is required on the inlet and outlet of the fan to prevent system effect losses. See the diagram below for a typical installation.

Installations can include flexible duct connections (by others) on either the inlet or outlet side of the fan or both. The motor is rigid mounted and can be oriented in any direction (top, bottom, side).

The model BSQ ducted inline fan must be installed with the motor accessible for maintenance and inspection.

External isolators are recommended, hanging (shown below) or base mounted.

Installation must meet all local governing codes and the NEC.



Model Number Code

The Model number system is designed to completely identify the fan. The correct code letters must be specified to designate belt or direct drive. The remainder of the model number is determined by the size and performance selected from the following pages.

BSQ - 240 HP - 7

MODEL CONFIGURATION

- BSQ - Belt Drive Inline Exhaust
- SQ - Direct Drive Inline Exhaust

FAN SIZE

60 through 420

PRESSURE LEVEL (Belt Drive Only)

HP - High Pressure Wheel

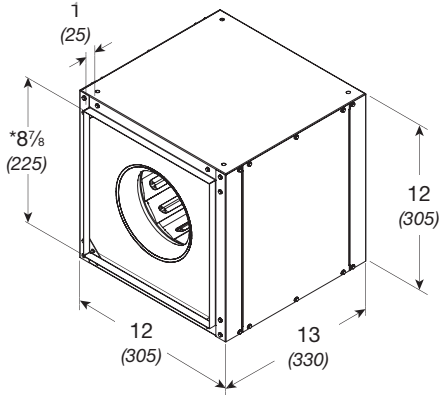
MOTOR HP (Belt Drive only)

6 = 1/6	7 = 3/4	30 = 3
4 = 1/4	10 = 1	50 = 5
3 = 1/3	15 = 1½	75 = 7½
5 = 1/2	20 = 2	100 = 10

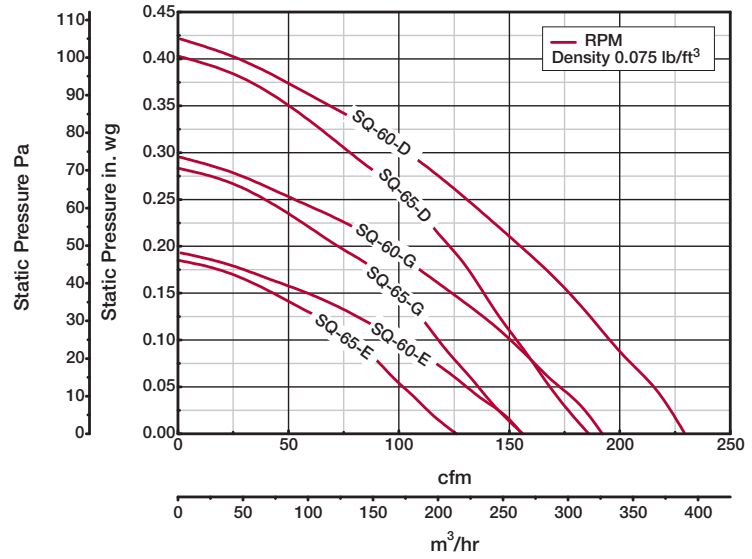
MOTOR RPM (Direct Drive only)

A = 1725	D = 1550
B = 1140	E = 1050
C = 860	G = 1300

SQ 60-65 - Direct Drive



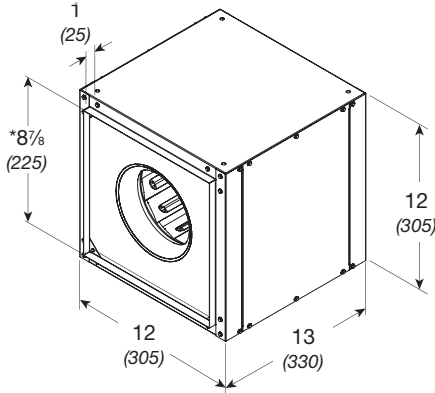
Damper size = 9 x 9 (229 x 229)
 Unit weight** = 26 (12)
 Housing thickness = 20 ga
 Outlet velocity = 1.828 x cfm
 Dimensions shown in inches (millimeters) and weight is shown in pounds (kilograms).
 *May be greater depending on motor.
 **Weight shown is largest cataloged Open Drip Proof motor.



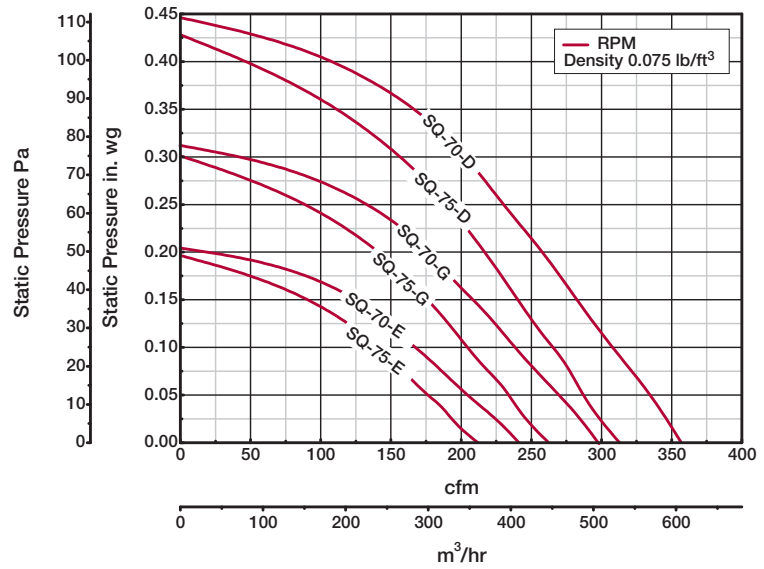
Model Number	Motor HP	Fan RPM		CFM / Static Pressure in Inches wg										
				0	0.05	0.1	0.125	0.15	0.2	0.25	0.3	0.35	0.375	
SQ-60-E	1/140	1050	CFM	126	101	78	63	42						
			BHP	0.005	0.006	0.007	0.007	0.006						
			Sones	1.7	1.7	1.8	1.8	1.9						
SQ-60-G	1/80	1300	CFM	156	135	117	109	99	72	37				
			BHP	0.01	0.011	0.012	0.012	0.013	0.013	0.012				
			Sones	2.5	2.5	2.5	2.5	2.5	2.5	2.5				
SQ-60-D	1/40	1550	CFM	186	168	153	145	138	122	105	78	47	31	
			BHP	0.017	0.018	0.019	0.02	0.02	0.022	0.022	0.021	0.02	0.019	
			Sones	4.0	4.0	4.0	4.0	4.0	4.0	4.0	4.1	4.1	4.1	
SQ-65-E	1/100	1050	CFM	154	129	98	79	56						
			BHP	0.007	0.008	0.009	0.009	0.008						
			Sones	2.1	2.0	2.0	1.9	1.9						
SQ-65-G	1/50	1300	CFM	191	171	149	137	123	92	52				
			BHP	0.013	0.014	0.016	0.016	0.017	0.016	0.015				
			Sones	2.9	2.9	2.9	2.9	2.9	2.8	2.8				
SQ-65-D	1/30	1550	CFM	228	213	194	184	175	153	128	101	66	46	
			BHP	0.022	0.023	0.026	0.026	0.027	0.028	0.028	0.027	0.025	0.023	
			Sones	4.2	4.1	4.1	4.0	4.0	3.9	3.8	3.7	3.6	3.5	

Performance certified is for installation type B: Free inlet, Ducted outlet. Performance ratings do not include the effects of appurtenances (accessories).
 The sound ratings shown are loudness values in fan sones at 1.5 m (5 feet) in a hemispherical free field calculated per AMCA Standard 301. Values shown are for installation type B: free inlet hemispherical fan sone levels.

SQ 70-75 - Direct Drive



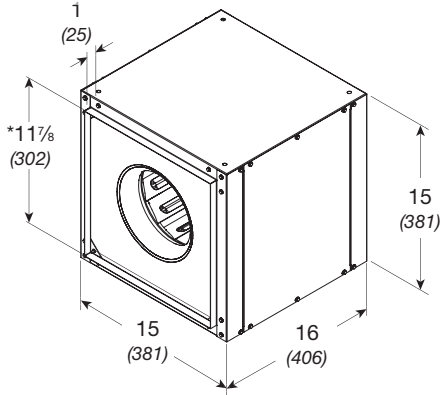
Damper size = 9 x 9 (229 x 229)
 Unit weight** = 26 (12)
 Housing thickness = 20 ga
 Outlet velocity = 1.828 x cfm
 Dimensions shown in inches (millimeters) and weight is shown in pounds (kilograms).
 *May be greater depending on motor.
 **Weight shown is largest cataloged Open Drip Proof motor.



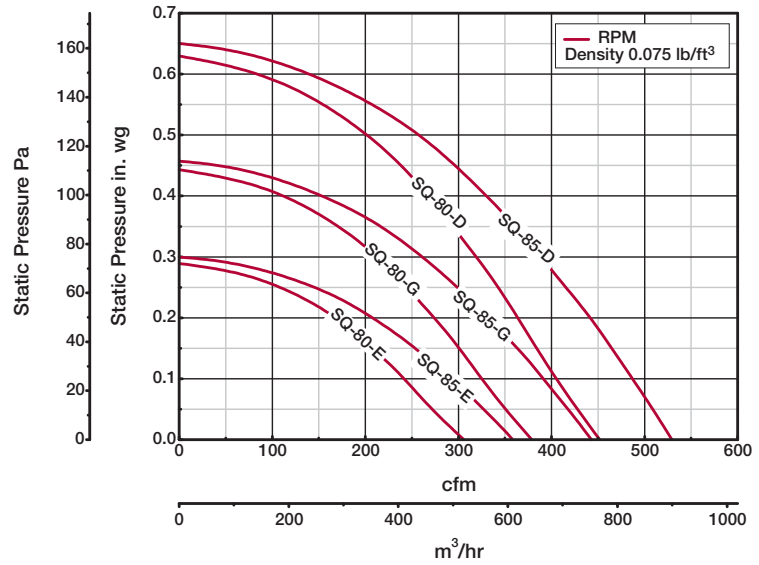
Model Number	Motor HP	Fan RPM		CFM / Static Pressure in Inches wg										
				0	0.1	0.125	0.15	0.2	0.25	0.3	0.35	0.375	0.4	
SQ-70-E	1/100	1050	CFM	212	140	118	86							
			BHP	0.008	0.009	0.009	0.009							
			Sones	2.7	1.7	1.5	1.5							
SQ-70-G	1/50	1300	CFM	262	204	190	176	139	77					
			BHP	0.015	0.018	0.018	0.018	0.017	0.015					
			Sones	4.1	3.4	3.3	3.1	2.9	2.5					
SQ-70-D	1/30	1550	CFM	313	265	252	240	216	189	155	99	67		
			BHP	0.026	0.029	0.03	0.03	0.03	0.03	0.029	0.026	0.025		
			Sones	5.6	5.2	5.1	5.1	4.9	4.7	4.5	4.2	4.0		
SQ-75-E	1/100	1050	CFM	241	167	146	123							
			BHP	0.01	0.011	0.011	0.01							
			Sones	3.6	2.9	2.8	2.6							
SQ-75-G	1/50	1300	CFM	298	239	224	209	176	133					
			BHP	0.019	0.021	0.021	0.021	0.02	0.019					
			Sones	4.1	3.7	3.7	3.7	3.6	3.5					
SQ-75-D	1/30	1550	CFM	356	306	294	281	256	229	201	164	137	99	
			BHP	0.032	0.034	0.035	0.035	0.035	0.035	0.034	0.033	0.032	0.029	
			Sones	6.1	5.5	5.4	5.3	5.1	4.9	4.9	4.8	4.8	4.8	

Performance certified is for installation type B: Free inlet, Ducted outlet. Performance ratings do not include the effects of appurtenances (accessories).
 The sound ratings shown are loudness values in fan sones at 1.5 m (5 feet) in a hemispherical free field calculated per AMCA Standard 301. Values shown are for installation type B: free inlet hemispherical fan sone levels.

SQ 80-85 - Direct Drive



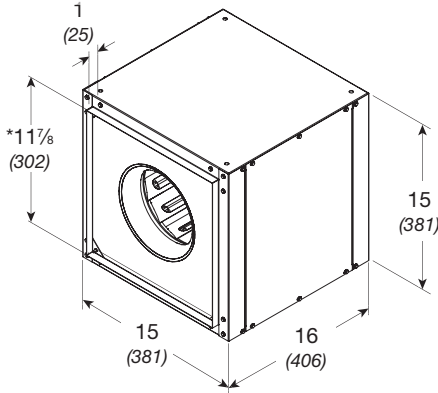
Damper size = 12 x 12 (305 x 305)
 Unit weight** = 41 (19)
 Housing thickness = 20 ga
 Outlet velocity = 1.021 x cfm
 Dimensions shown in inches (millimeters) and weight is shown in pounds (kilograms).
 *May be greater depending on motor.
 **Weight shown is largest cataloged Open Drip Proof motor.



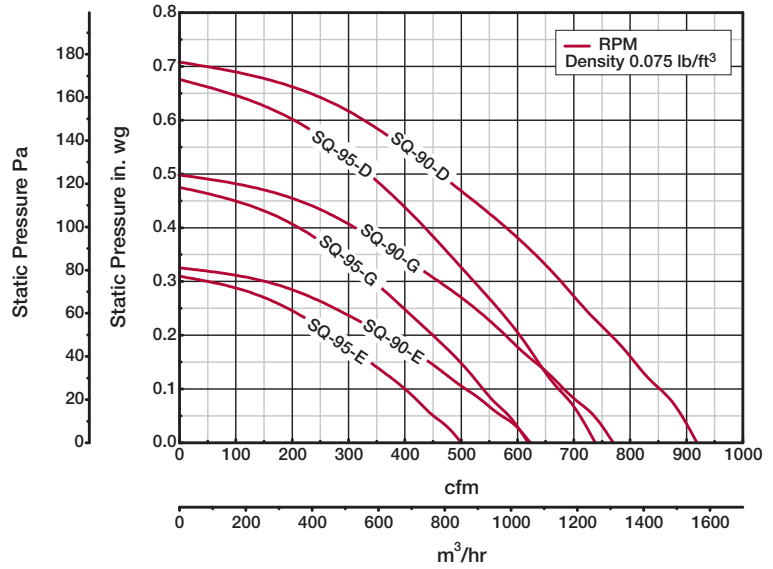
Model Number	Motor HP	Fan RPM		CFM / Static Pressure in Inches wg										
				0	0.1	0.125	0.2	0.25	0.3	0.375	0.4	0.45	0.5	
SQ-80-E	1/40	1050	CFM	306	241	225	166	104						
			BHP	0.011	0.014	0.015	0.017	0.016						
			Sones	3.8	3.7	3.6	3.8	4.1						
SQ-80-G	1/20	1300	CFM	378	324	312	273	244	210	140				
			BHP	0.021	0.025	0.026	0.029	0.032	0.032	0.031				
			Sones	5.4	5.4	5.4	5.4	5.4	5.4	5.5				
SQ-80-D	1/12	1550	CFM	451	405	394	363	342	318	280	266	238	201	
			BHP	0.035	0.039	0.041	0.045	0.047	0.051	0.055	0.055	0.055	0.055	
			Sones	7.3	7.3	7.3	7.3	7.2	7.3	7.3	7.4	7.5	7.6	
SQ-85-E	1/40	1050	CFM	357	291	272	206	142						
			BHP	0.012	0.016	0.017	0.018	0.017						
			Sones	4.0	3.9	3.9	3.9	4.0						
SQ-85-G	1/20	1300	CFM	442	391	377	331	298	260	185				
			BHP	0.024	0.028	0.028	0.032	0.033	0.034	0.033				
			Sones	5.5	5.3	5.3	5.3	5.3	5.4	5.4				
SQ-85-D	1/12	1550	CFM	528	485	474	439	413	386	343	327	294	254	
			BHP	0.04	0.045	0.046	0.049	0.052	0.054	0.056	0.057	0.057	0.057	
			Sones	7.6	7.4	7.4	7.4	7.4	7.4	7.4	7.5	7.5	7.6	

Performance certified is for installation type B: Free inlet, Ducted outlet. Performance ratings do not include the effects of appurtenances (accessories).
 The sound ratings shown are loudness values in fan sones at 1.5 m (5 feet) in a hemispherical free field calculated per AMCA Standard 301. Values shown are for installation type B: free inlet hemispherical fan sone levels.

SQ 90-95 - Direct Drive



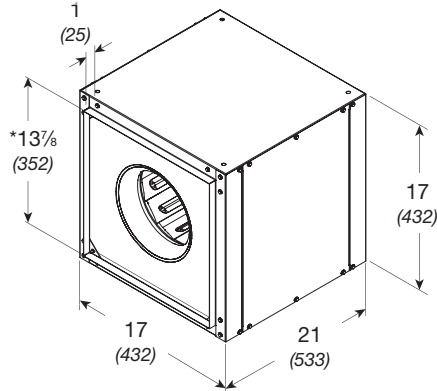
Damper size = 12 x 12 (305 x 305)
 Unit weight** = 41 (19)
 Housing thickness = 20 ga
 Outlet velocity = 1.021 x cfm
 Dimensions shown in inches (millimeters) and weight is shown in pounds (kilograms).
 *May be greater depending on motor.
 **Weight shown is largest cataloged Open Drip Proof motor.



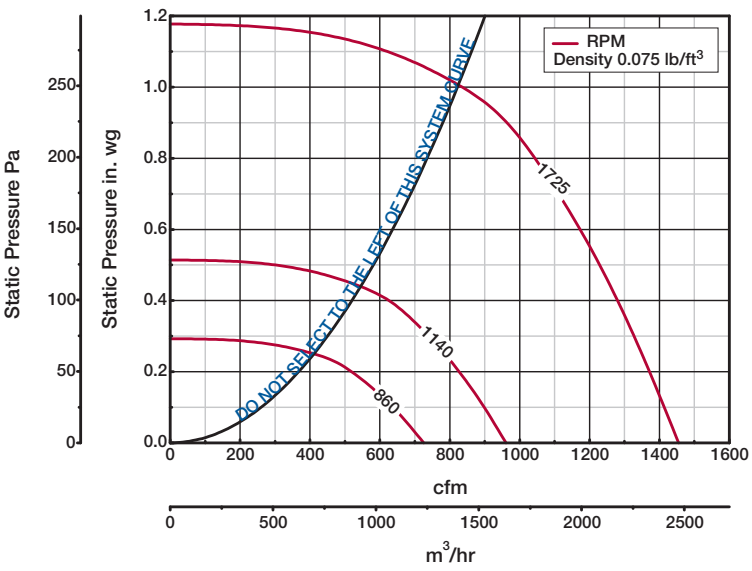
Model Number	Motor HP	Fan RPM		CFM / Static Pressure in Inches wg										
				0	0.125	0.2	0.25	0.3	0.375	0.4	0.5	0.6	0.625	
SQ-90-E	1/50	1050	CFM	500	369	271	188							
			BHP	0.016	0.02	0.021	0.02							
			Sones	4.0	3.9	4.0	4.1							
SQ-90-G	1/25	1300	CFM	619	519	449	397	343	245	207				
			BHP	0.03	0.036	0.039	0.04	0.04	0.038	0.037				
			Sones	5.4	5.4	5.4	5.5	5.5	5.6	5.6				
SQ-90-D	1/10	1550	CFM	738	654	602	564	522	457	435	334			
			BHP	0.051	0.059	0.062	0.064	0.067	0.068	0.068	0.067			
			Sones	7.6	7.5	7.5	7.4	7.4	7.4	7.4	7.4			
SQ-95-E	1/30	1050	CFM	623	475	365	274							
			BHP	0.028	0.031	0.031	0.03							
			Sones	4.9	4.5	4.4	4.5							
SQ-95-G	1/15	1300	CFM	771	659	579	522	461	352	311				
			BHP	0.053	0.057	0.058	0.059	0.059	0.057	0.056				
			Sones	7.6	6.7	6.5	6.4	6.4	6.4	6.4				
SQ-95-D	1/8	1550	CFM	919	829	765	720	677	603	579	461	324	276	
			BHP	0.09	0.094	0.097	0.097	0.1	0.1	0.1	0.099	0.094	0.091	
			Sones	9.6	9.3	8.9	8.7	8.4	8.1	8.0	7.6	7.2	7.1	

Performance certified is for installation type B: Free inlet, Ducted outlet. Performance ratings do not include the effects of appurtenances (accessories).
 The sound ratings shown are loudness values in fan sones at 1.5 m (5 feet) in a hemispherical free field calculated per AMCA Standard 301. Values shown are for installation type B: free inlet hemispherical fan sone levels.

SQ 100 - Direct Drive



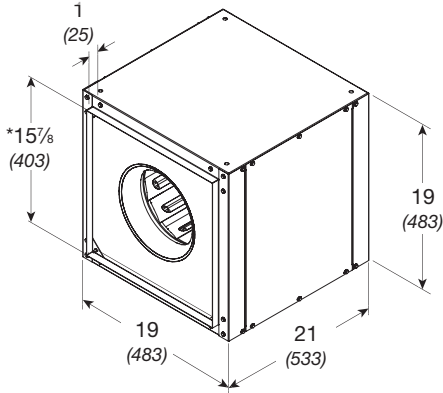
Damper size = 14 x 14 (356 x 356)
 Unit weight** = 56 (25)
 Housing thickness = 20 ga
 Outlet velocity = 0.748 x cfm
 Dimensions shown in inches (millimeters) and weight is shown in pounds (kilograms).
 *May be greater depending on motor.
 **Weight shown is largest cataloged Open Drip Proof motor.



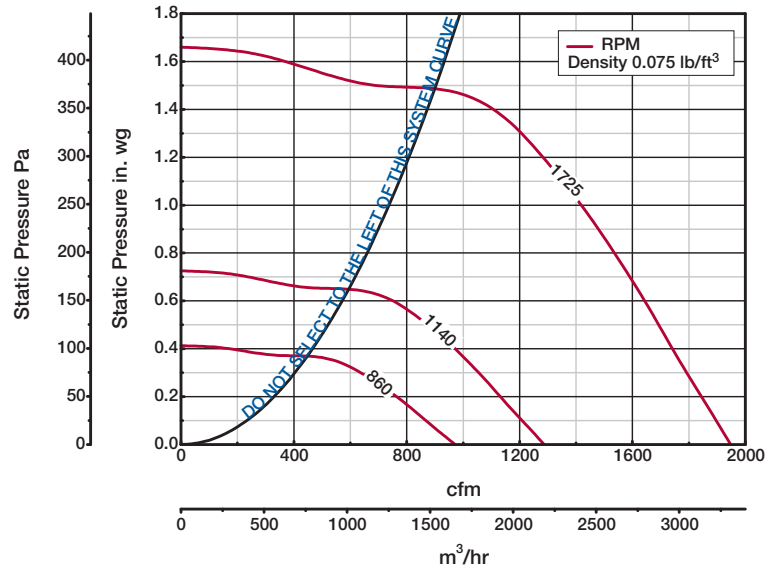
Model Number	Motor HP	Fan RPM		CFM / Static Pressure in Inches wg											
				0	0.1	0.125	0.25	0.3	0.375	0.5	0.625	0.75	1		
SQ-100-C	1/8	860	CFM	725	637	611									
			BHP	0.027	0.03	0.03									
			Sones	4.7	3.8	3.7									
SQ-100-B	1/6	1140	CFM	961	898	881	785	738	657						
			BHP	0.064	0.067	0.068	0.071	0.071	0.07						
			Sones	7.4	6.6	6.5	6.1	5.9	5.6						
SQ-100-A	1/4	1725	CFM	1454	1412	1402	1349	1326	1292	1227	1156	1077	830		
			BHP	0.22	0.23	0.23	0.23	0.24	0.24	0.24	0.25	0.25	0.22		
			Sones	13.1	12.6	12.4	11.9	11.7	11.5	11.1	10.7	10.4	9.6		

Performance certified is for installation type B: Free inlet, Ducted outlet. Performance ratings do not include the effects of appurtenances (accessories).
 The sound ratings shown are loudness values in fan sones at 1.5 m (5 feet) in a hemispherical free field calculated per AMCA Standard 301. Values shown are for installation type B: free inlet hemispherical fan sone levels.

SQ 120 - Direct Drive



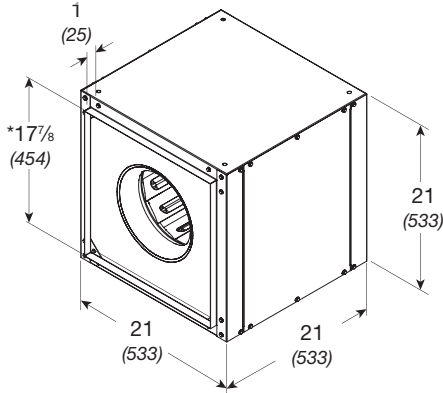
Damper size = 16 x 16 (406 x 406)
 Unit weight** = 67 (30)
 Housing thickness = 20 ga
 Outlet velocity = 0.571 x cfm
 Dimensions shown in inches (millimeters) and weight is shown in pounds (kilograms).
 *May be greater depending on motor.
 **Weight shown is largest cataloged Open Drip Proof motor.



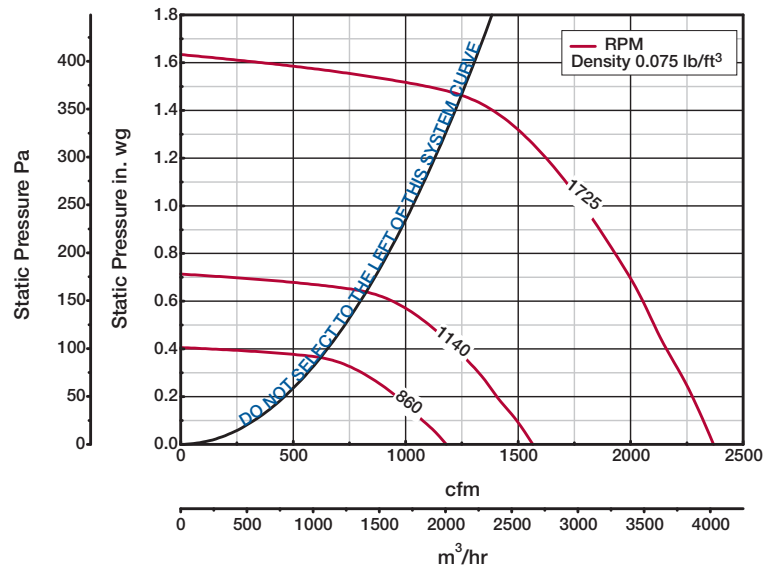
Model Number	Motor HP	Fan RPM		CFM / Static Pressure in Inches wg										
				0	0.125	0.25	0.375	0.5	0.625	0.75	1	1.25	1.375	
SQ-120-C	1/8	860	CFM	971	843	704								
			BHP	0.051	0.055	0.059								
			Sones	4.4	4.1	3.3								
SQ-120-B	1/6	1140	CFM	1287	1189	1094	992	873	692					
			BHP	0.12	0.12	0.13	0.14	0.14	0.13					
			Sones	7.4	7.2	7.0	6.3	5.9	5.8					
SQ-120-A	1/2	1725	CFM	1948	1883	1818	1754	1692	1628	1562	1416	1239	1128	
			BHP	0.41	0.42	0.42	0.44	0.45	0.46	0.46	0.48	0.48	0.47	
			Sones	14.7	14.1	13.8	13.6	13.5	13.4	13.2	12.6	11.9	11.7	

Performance certified is for installation type B: Free inlet, Ducted outlet. Performance ratings do not include the effects of appurtenances (accessories).
 The sound ratings shown are loudness values in fan sones at 1.5 m (5 feet) in a hemispherical free field calculated per AMCA Standard 301. Values shown are for installation type B: free inlet hemispherical fan sone levels.

SQ 130 - Direct Drive



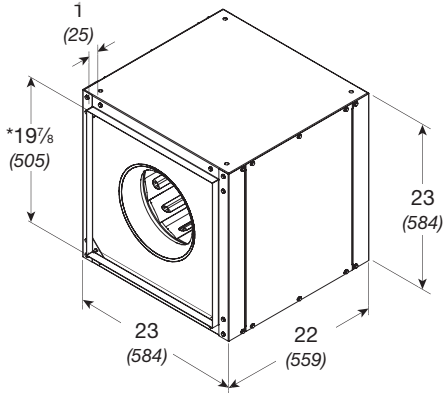
Damper size = 18 x 18 (457 x 457)
 Unit weight** = 67 (35)
 Housing thickness = 20 ga
 Outlet velocity = 0.451 x cfm
 Dimensions shown in inches (millimeters) and weight is shown in pounds (kilograms).
 *May be greater depending on motor.
 **Weight shown is largest cataloged Open Drip Proof motor.



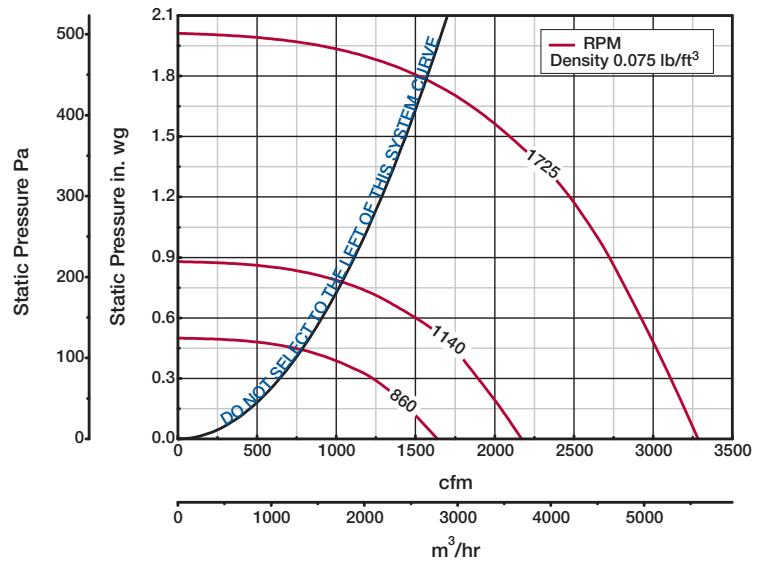
Model Number	Motor HP	Fan RPM		CFM / Static Pressure in Inches wg										
				0	0.125	0.25	0.375	0.5	0.625	0.75	1	1.25	1.375	
SQ-130-C	1/8	860	CFM	1180	1048	890								
			BHP	0.067	0.075	0.078								
			Sones	6.2	5.2	4.5								
SQ-130-B	1/4	1140	CFM	1564	1471	1366	1248	1104	865					
			BHP	0.16	0.17	0.18	0.18	0.18	0.17					
			Sones	9.4	8.3	7.4	6.8	6.5	6.4					
SQ-130-A	3/4	1725	CFM	2368	2307	2247	2174	2105	2038	1961	1791	1559	1409	
			BHP	0.54	0.56	0.57	0.59	0.6	0.62	0.62	0.63	0.61	0.59	
			Sones	17.4	17.6	17.1	17.1	16.6	16.4	15.9	15.7	15.6	15.6	

Performance certified is for installation type B: Free inlet, Ducted outlet. Performance ratings do not include the effects of appurtenances (accessories).
 The sound ratings shown are loudness values in fan sones at 1.5 m (5 feet) in a hemispherical free field calculated per AMCA Standard 301. Values shown are for installation type B: free inlet hemispherical fan sone levels.

SQ 140 - Direct Drive



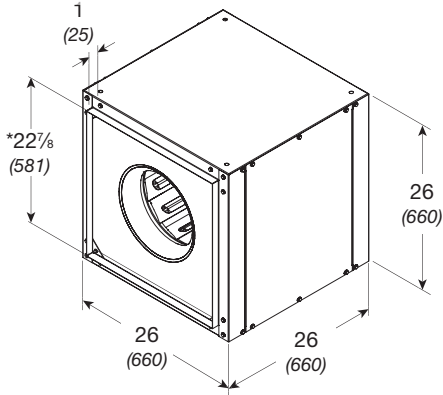
Damper size = 20 x 20 (508 x 508)
 Unit weight** = 104 (47)
 Housing thickness = 18 ga
 Outlet velocity = 0.364 x cfm
 Dimensions shown in inches (millimeters) and weight is shown in pounds (kilograms).
 *May be greater depending on motor.
 **Weight shown is largest cataloged Open Drip Proof motor.



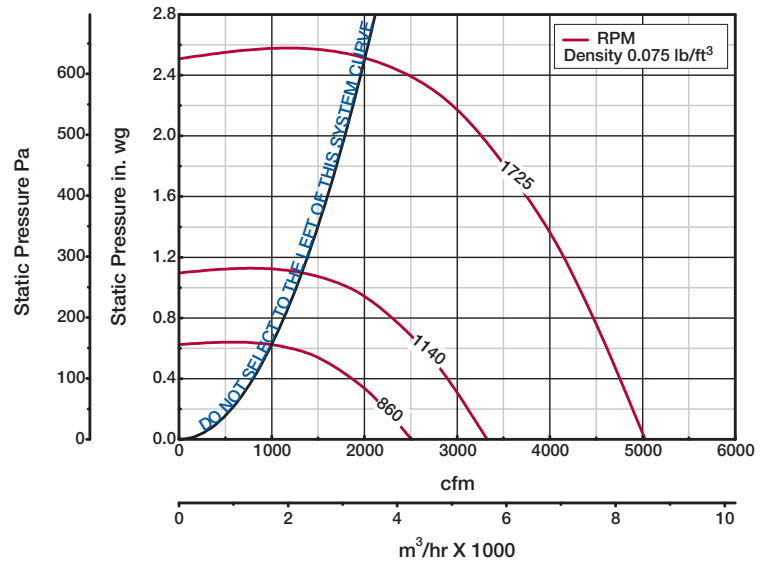
Model Number	Motor HP	Fan RPM		CFM / Static Pressure in Inches wg										
				0	0.25	0.375	0.5	0.625	0.75	1	1.375	1.5	1.75	
SQ-140-C	1/8	860	CFM	1637	1316	1033								
			BHP	0.12	0.13	0.13								
			Sones	7.0	6.2	5.9								
SQ-140-B	1/3	1140	CFM	2170	1942	1818	1666	1446	1121					
			BHP	0.27	0.29	0.3	0.3	0.3	0.27					
			Sones	10.8	10.1	10.0	9.8	9.6	9.4					
SQ-140-A	1	1725	CFM	3283	3139	3065	2985	2905	2825	2645	2268	2085	1624	
			BHP	0.93	0.97	0.98	1	1.01	1.03	1.03	1.03	1.01	0.93	
			Sones	20	19.3	19.0	18.7	18.6	18.4	18.2	17.2	16.7	15.9	

Performance certified is for installation type B: Free inlet, Ducted outlet. Performance ratings do not include the effects of appurtenances (accessories).
 The sound ratings shown are loudness values in fan sones at 1.5 m (5 feet) in a hemispherical free field calculated per AMCA Standard 301. Values shown are for installation type B: free inlet hemispherical fan sone levels.

SQ 160 - Direct Drive



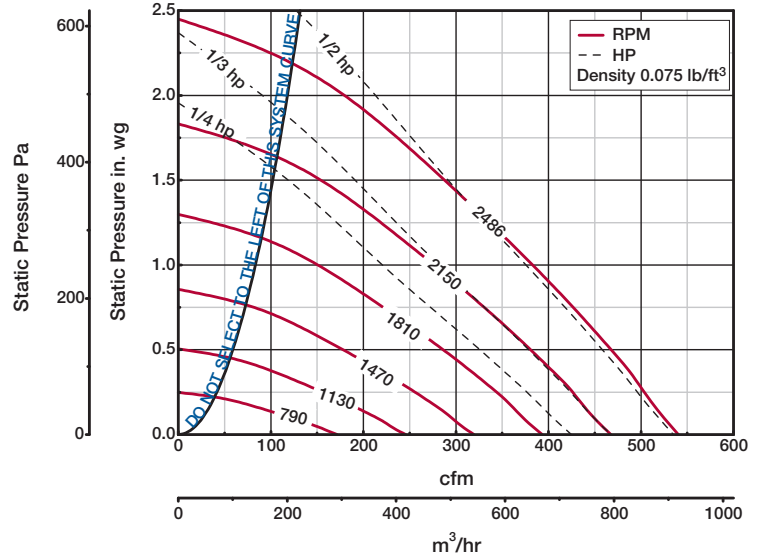
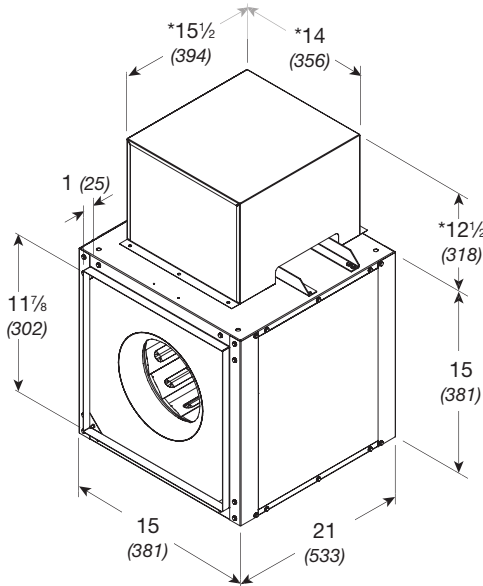
Damper size = 23 x 23 (584 x 584)
 Unit weight** = 160 (73)
 Housing thickness = 18 ga
 Outlet velocity = 0.275 x cfm
 Dimensions shown in inches (millimeters) and weight is shown in pounds (kilograms).
 *May be greater depending on motor.
 **Weight shown is largest cataloged Open Drip Proof motor.



Model Number	Motor HP	Fan RPM		CFM / Static Pressure in Inches wg											
				0	0.25	0.5	0.75	1	1.25	1.5	1.75	1.875	2		
SQ-160-C	1/4	860	CFM	2506	2147	1605									
			BHP	0.2	0.23	0.24									
			Sones	8.8	7.2	6.5									
SQ-160-B	1/2	1140	CFM	3322	3061	2773	2388	1808							
			BHP	0.47	0.51	0.54	0.56	0.51							
			Sones	14.0	12.8	11.9	11.4	10.8							
SQ-160-A	2	1725	CFM	5027	4856	4683	4504	4312	4094	3845	3575	3414	3236		
			BHP	1.64	1.69	1.74	1.8	1.85	1.89	1.93	1.95	1.94	1.91		
			Sones	26	25	24	24	24	24	24	24	24	24	24	

Performance certified is for installation type B: Free inlet, Ducted outlet. Performance ratings do not include the effects of appurtenances (accessories).
 The sound ratings shown are loudness values in fan sones at 1.5 m (5 feet) in a hemispherical free field calculated per AMCA Standard 301. Values shown are for installation type B: free inlet hemispherical fan sone levels.

BSQ 70 - Belt Drive



Damper size = 12 x 12 (305 x 305)

Unit weight** = 76 (34)

Housing thickness = 20 ga

Dimensions shown in inches (millimeters) and weight is shown in pounds (kilograms).

*Motor cover is optional. Size may be greater depending on motor.

**Weight shown is largest cataloged Open Drip Proof motor.

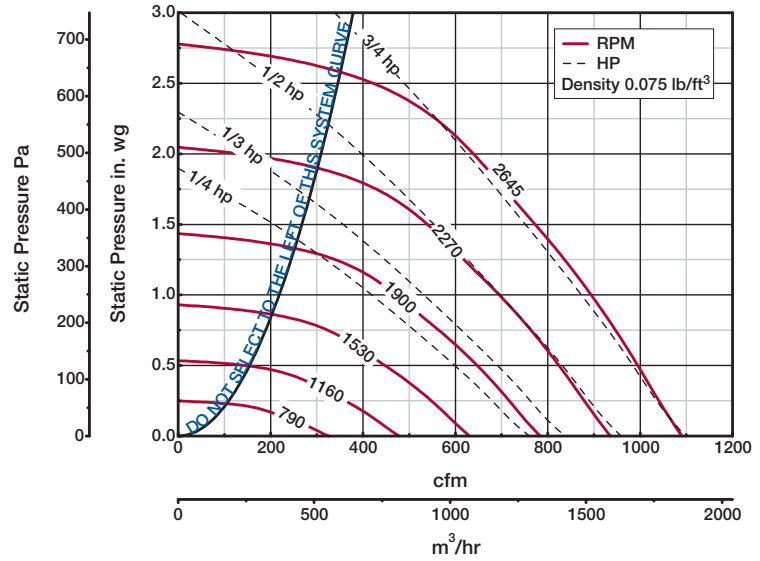
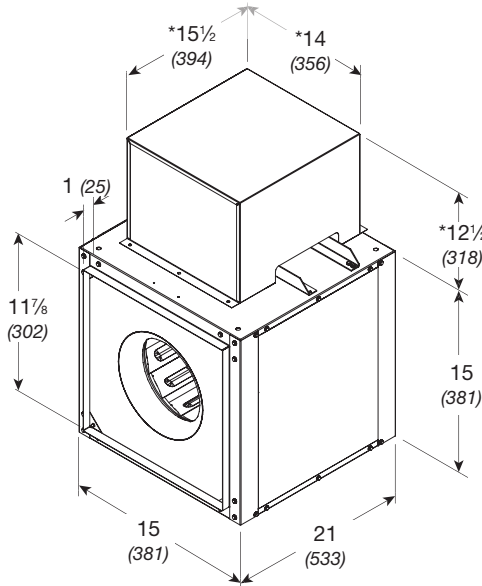
Model Number	Motor HP	Fan RPM	CFM / Static Pressure in Inches wg																
			0.125	0.25	0.5	0.625	0.75	1	1.25	1.5	1.75	2							
BSQ-70-4	1/4	1050	CFM	184	129														
			BHP	0.039	0.037														
			Sones	8.0	7.5														
		1313	CFM	251	211	117													
			BHP	0.077	0.076	0.068													
			Sones	11.0	10.4	9.2													
		1445	CFM	284	249	169	122												
			BHP	0.103	0.102	0.097	0.09												
			Sones	12.8	12.3	10.7	10.3												
		1577	CFM	314	284	213	175	131											
			BHP	0.13	0.13	0.13	0.12	0.12											
			Sones	14.9	14.6	12.7	11.9	11.4											
1709	CFM	345	318	254	220	184	97												
	BHP	0.17	0.17	0.17	0.16	0.16	0.14												
	Sones	16.1	15.9	14.5	13.9	13.3	12.4												
1840	CFM	375	351	293	262	231	159												
	BHP	0.21	0.21	0.21	0.21	0.2	0.19												
	Sones	17.3	17.0	16.4	16.0	15.4	14.5												
1972	CFM	405	384	331	302	273	212	142											
	BHP	0.26	0.26	0.26	0.25	0.25	0.24	0.22											
	Sones	19.2	19.1	18.6	18.2	17.9	17.7	16.5											
BSQ-70-3	1/3	2072	CFM	428	408	360	332	305	249	184	103								
			BHP	0.3	0.3	0.3	0.3	0.29	0.29	0.27	0.24								
			Sones	20	20	19.9	19.5	19.1	18.5	18.2	16.8								
		2172	CFM	450	431	387	361	335	282	224	161								
			BHP	0.34	0.35	0.35	0.34	0.34	0.33	0.32	0.3								
			Sones	21	21	21	21	20	19.7	19.2	18.8								
BSQ-70-5	1/2	2329	CFM	486	467	428	406	381	332	283	225	166							
			BHP	0.43	0.43	0.43	0.43	0.42	0.42	0.41	0.39	0.36							
			Sones	23	23	23	23	23	22	21	20	21							
		2486	CFM	521	504	468	447	426	380	334	287	232	176						
			BHP	0.52	0.52	0.52	0.52	0.52	0.51	0.5	0.49	0.47	0.44						
			Sones	25	25	25	25	25	25	24	23	22	22	22	22	22	22	23	

MAX Bhp AT A GIVEN RPM = (rpm/3084)³
 MAXIMUM RPM = 2486
 TIP SPEED (ft/min) = rpm x 2.928
 MAX NEMA MOTOR FRAME SIZE = 145T
 OUTLET VELOCITY (ft/min) = 1.0212 x cfm

Performance certified is for installation type B: Free inlet, Ducted outlet. Performance ratings do not include the effects of appurtenances (accessories). Power rating (Bhp) does not include transmission losses.

The sound ratings shown are loudness values in fan sones at 1.5 m (5 feet) in a hemispherical free field calculated per AMCA Standard 301. Values shown are for installation type B: free inlet hemispherical fan sone levels.

BSQ 80 - Belt Drive



Damper size = 12 x 12 (305 x 305)

Unit weight** = 79 (36)

Housing thickness = 20 ga

Dimensions shown in inches (millimeters) and weight is shown in pounds (kilograms).

*Motor cover is optional. Size may be greater depending on motor.

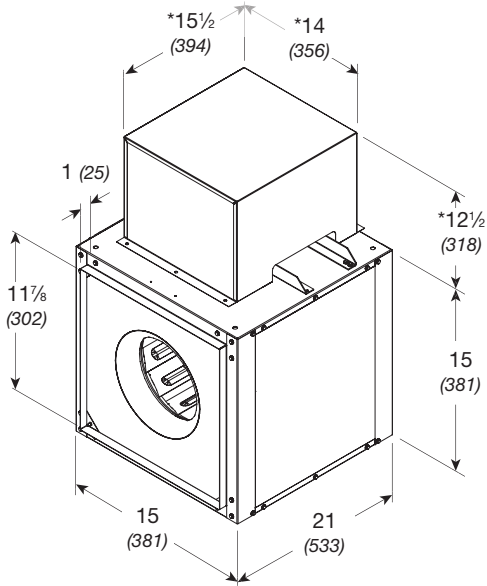
**Weight shown is largest cataloged Open Drip Proof motor.

Model Number	Motor HP	Fan RPM	CFM / Static Pressure in Inches wg																	
			0.125	0.25	0.5	0.75	1	1.25	1.5	1.75	2	2.5								
BSQ-80-4	1/4	1050	CFM	372	298															
			BHP	0.049	0.049															
			Sones	8.0	7.6															
		1207	CFM	445	386	206														
			BHP	0.073	0.075	0.065														
			Sones	9.7	9.1	8.2														
	1520	CFM	585	542	442	301														
		BHP	0.15	0.15	0.15	0.14														
		Sones	13.9	13.5	11.8	10.8														
		1676	CFM	652	615	530	426	254												
			BHP	0.19	0.2	0.2	0.2	0.17												
			Sones	15.9	15.6	14.1	12.9	11.5												
1833	CFM	720	687	613	524	424														
	BHP	0.25	0.26	0.26	0.26	0.25														
	Sones	17.2	16.9	16.3	15.3	14.3														
BSQ-80-3	1/3	1926	CFM	760	728	660	579	486	346											
			BHP	0.29	0.3	0.3	0.3	0.3	0.27											
			Sones	18.4	18.3	17.8	17.1	16.9	13.9											
	2018	CFM	799	769	704	630	545	452	269											
		BHP	0.34	0.34	0.35	0.35	0.34	0.34	0.28											
		Sones	19.6	19.5	19.2	18.4	18.1	16.7	13.5											
BSQ-80-5	1/2	2164	CFM	861	833	774	708	633	550	442										
			BHP	0.41	0.42	0.43	0.43	0.43	0.42	0.4										
			Sones	21	21	21	20	19.6	19.2	17.6										
	2310	CFM	924	897	842	784	716	643	563	445										
		BHP	0.5	0.51	0.52	0.52	0.52	0.52	0.51	0.48										
		Sones	23	23	22	23	21	21	20	19.9										
BSQ-80-7	3/4	2478	CFM	995	969	919	865	807	743	671	597	486								
			BHP	0.62	0.63	0.63	0.64	0.65	0.65	0.64	0.63	0.59								
			Sones	25	25	24	25	24	23	22	22	23								
	2645	CFM	1065	1041	995	945	894	835	773	705	635	395								
		BHP	0.75	0.76	0.77	0.78	0.79	0.79	0.78	0.77	0.77	0.65								
		Sones	28	28	27	27	27	26	25	24	24	35								

Performance certified is for installation type B: Free inlet, Ducted outlet. Performance ratings do not include the effects of appurtenances (accessories). Power rating (Bhp) does not include transmission losses.

The sound ratings shown are loudness values in fan sones at 1.5 m (5 feet) in a hemispherical free field calculated per AMCA Standard 301. Values shown are for installation type B: free inlet hemispherical fan sone levels.

BSQ 90 - Belt Drive



Damper size = 12 x 12 (305 x 305)

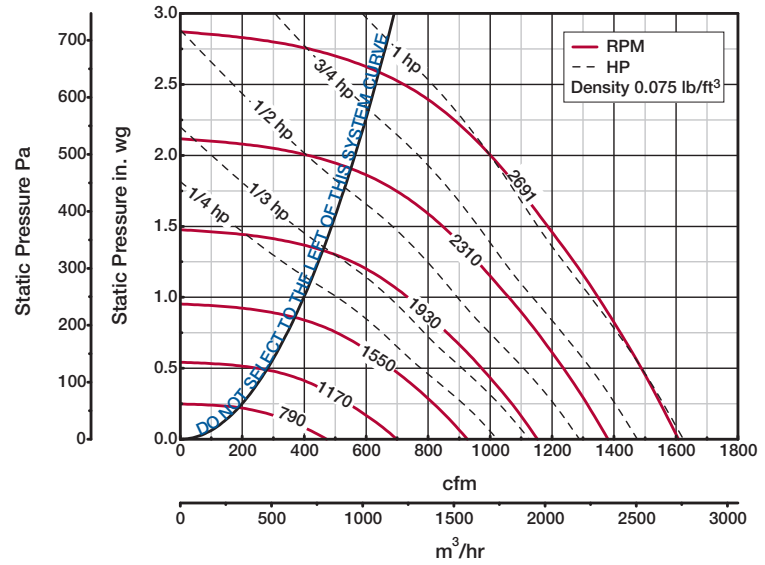
Unit weight** = 84 (38)

Housing thickness = 20 ga

Dimensions shown in inches (millimeters) and weight is shown in pounds (kilograms).

*Motor cover is optional. Size may be greater depending on motor.

**Weight shown is largest cataloged Open Drip Proof motor.



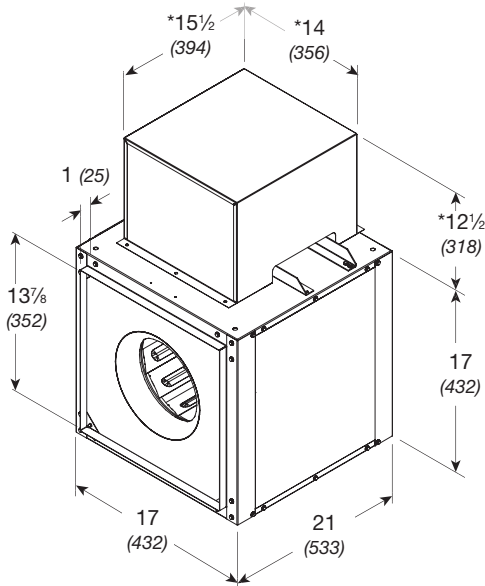
Model Number	Motor HP	Fan RPM	CFM / Static Pressure in Inches wg																			
			0.125	0.25	0.5	0.75	1	1.5	1.75	2	2.25	2.5										
BSQ-90-4	1/4	1050	CFM	547	443																	
			BHP	0.061	0.061																	
			Sones	8.0	7.6																	
		1211	CFM	655	574	333																
			BHP	0.092	0.095	0.084																
			Sones	9.8	9.1	8.3																
	1533	CFM	864	806	667	477																
		BHP	0.18	0.19	0.19	0.18																
		Sones	14.2	13.8	12.1	11.0																
	1694	CFM	965	914	798	654	437															
		BHP	0.25	0.25	0.26	0.25	0.22															
		Sones	16.0	15.8	14.4	13.1	12.3															
BSQ-90-3	1/3	1780	CFM	1019	971	863	734	562														
			BHP	0.29	0.29	0.3	0.3	0.28														
			Sones	16.7	16.5	15.6	14.4	13.7														
		1866	CFM	1072	1028	926	808	657														
			BHP	0.33	0.33	0.35	0.35	0.33														
			Sones	17.5	17.3	16.9	15.9	15.4														
BSQ-90-5	1/2	2136	CFM	1239	1202	1118	1024	917	638													
			BHP	0.49	0.5	0.51	0.52	0.52	0.47													
			Sones	21	21	21	19.9	19.2	18.4													
BSQ-90-7	3/4	2291	CFM	1334	1300	1223	1138	1045	811	668												
			BHP	0.61	0.61	0.62	0.64	0.65	0.61	0.58												
			Sones	23	23	22	22	21	20	20												
		2445	CFM	1429	1396	1326	1249	1167	976	844	707											
			BHP	0.73	0.74	0.75	0.77	0.79	0.77	0.73	0.7											
			Sones	25	25	24	25	23	22	22	23											
BSQ-90-10	1	2568	CFM	1504	1473	1407	1336	1258	1082	977	851	704										
			BHP	0.85	0.86	0.87	0.89	0.9	0.9	0.88	0.84	0.8										
			Sones	26	26	26	26	26	24	22	24	25										
		2691	CFM	1579	1549	1488	1420	1347	1186	1097	987	866	713									
			BHP	0.98	0.98	1	1.02	1.03	1.05	1.03	1	0.96	0.91									
			Sones	28	28	27	28	28	26	25	24	26	29									

MAX Bhp AT A GIVEN RPM = (rpm/2649)³
 MAXIMUM RPM = 2691
 TIP SPEED (ft/min) = rpm x 2.928
 MAX NEMA MOTOR FRAME SIZE = 145T
 OUTLET VELOCITY (ft/min) = 1.0212 x cfm

Performance certified is for installation type B: Free inlet, Ducted outlet. Performance ratings do not include the effects of appurtenances (accessories). Power rating (Bhp) does not include transmission losses.

The sound ratings shown are loudness values in fan sones at 1.5 m (5 feet) in a hemispherical free field calculated per AMCA Standard 301. Values shown are for installation type B: free inlet hemispherical fan sone levels.

BSQ 100 - Belt Drive



Damper size = 14 x 14 (357 x 357)

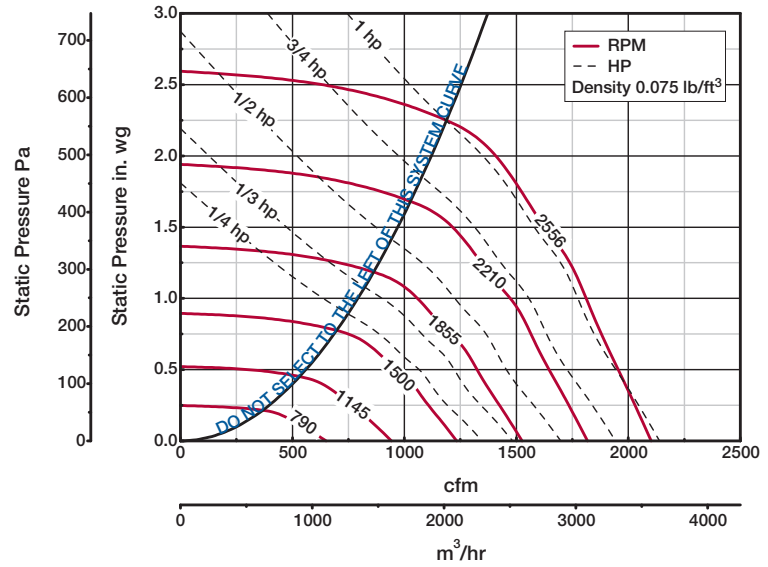
Unit weight** = 83 (38)

Housing thickness = 20 ga

Dimensions shown in inches (millimeters) and weight is shown in pounds (kilograms).

*Motor cover is optional. Size may be greater depending on motor.

**Weight shown is largest cataloged Open Drip Proof motor.



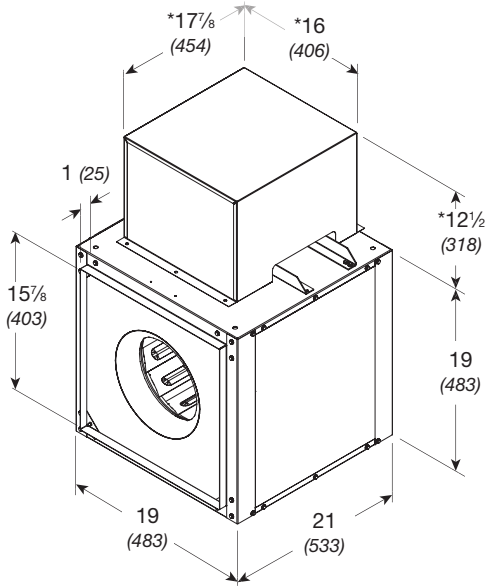
Model Number	Motor HP	Fan RPM	CFM / Static Pressure in Inches wg																	
			0.125	0.25	0.5	0.625	0.75	1	1.25	1.5	1.75	2								
BSQ-100-4	1/4	1050	CFM	774	671															
			BHP	0.072	0.073															
			Sones	7.9	7.6															
		1330	CFM	1024	953	770														
			BHP	0.14	0.15	0.15														
			Sones	11.3	10.6	9.4														
	1469	CFM	1145	1080	931	837														
		BHP	0.19	0.2	0.2	0.2														
		Sones	13.2	12.6	11.0	10.5														
	1609	CFM	1265	1207	1088	1003	917													
		BHP	0.25	0.25	0.26	0.26	0.26													
		Sones	15.4	15.0	13.4	12.4	11.8													
BSQ-100-3	1/3	1772	CFM	1405	1352	1247	1187	1110	939											
			BHP	0.33	0.34	0.35	0.35	0.35	0.35											
			Sones	16.6	16.4	15.5	14.8	14.3	13.1											
BSQ-100-5	1/2	1901	CFM	1515	1465	1366	1320	1255	1115											
			BHP	0.4	0.41	0.43	0.43	0.43	0.43											
			Sones	18.0	17.8	17.4	17.1	16.6	16.2											
	2029	CFM	1623	1577	1484	1439	1396	1262	1119											
		BHP	0.49	0.5	0.52	0.52	0.52	0.52	0.52											
		Sones	19.8	19.6	19.4	19.0	18.6	18.2	17.2											
BSQ-100-7	3/4	2176	CFM	1747	1704	1617	1574	1533	1428	1305	1163									
			BHP	0.6	0.61	0.63	0.64	0.65	0.65	0.65	0.65									
			Sones	21	21	21	21	20	19.8	19.3	18.5									
	2323	CFM	1871	1830	1749	1708	1668	1591	1472	1358	1197									
		BHP	0.73	0.74	0.76	0.78	0.79	0.79	0.79	0.79	0.78									
		Sones	23	23	23	23	23	22	21	20	21									
BSQ-100-10	1	2440	CFM	1969	1930	1853	1815	1776	1703	1605	1494	1377	1184							
			BHP	0.84	0.86	0.88	0.89	0.9	0.91	0.91	0.91	0.91	0.88							
			Sones	25	25	24	24	25	23	23	22	22	23							
	2556	CFM	2066	2029	1956	1919	1882	1810	1734	1626	1522	1402								
		BHP	0.97	0.98	1.01	1.02	1.03	1.05	1.05	1.05	1.05	1.05								
		Sones	26	26	25	26	26	25	25	24	22	24								

MAX Bhp AT A GIVEN RPM = (rpm/2517)³
 MAXIMUM RPM = 2556
 TIP SPEED (ft/min) = rpm x 2.928
 MAX NEMA MOTOR FRAME SIZE = 145T
 OUTLET VELOCITY (ft/min) = 0.7617 x cfm

Performance certified is for installation type B: Free inlet, Ducted outlet. Performance ratings do not include the effects of appurtenances (accessories). Power rating (Bhp) does not include transmission losses.

The sound ratings shown are loudness values in fan sones at 1.5 m (5 feet) in a hemispherical free field calculated per AMCA Standard 301. Values shown are for installation type B: free inlet hemispherical fan sone levels.

BSQ 120 - Belt Drive



Damper size = 16 x 16 (406 x 406)

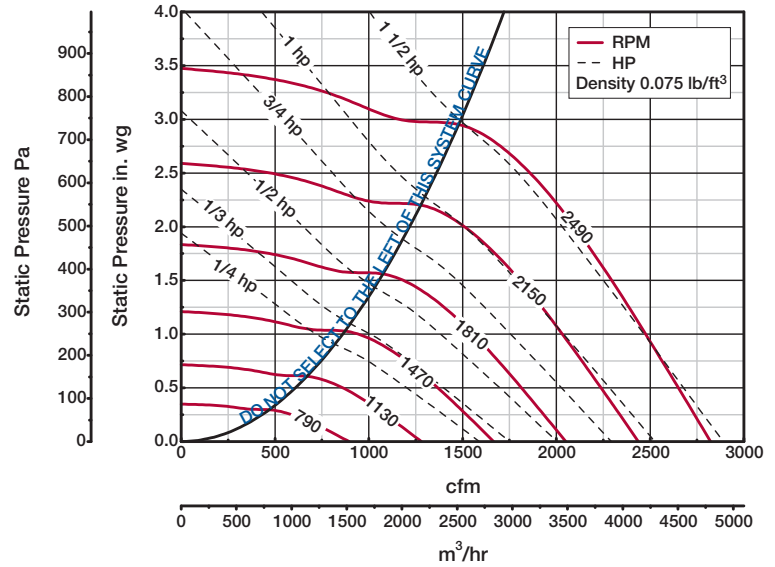
Unit weight** = 97 (44)

Housing thickness = 20 ga

Dimensions shown in inches (millimeters) and weight is shown in pounds (kilograms).

*Motor cover is optional. Size may be greater depending on motor.

**Weight shown is largest cataloged Open Drip Proof motor.



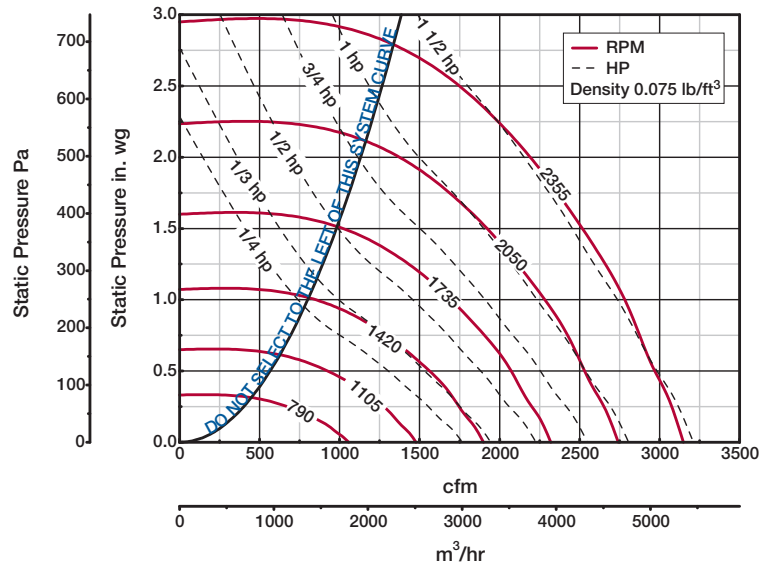
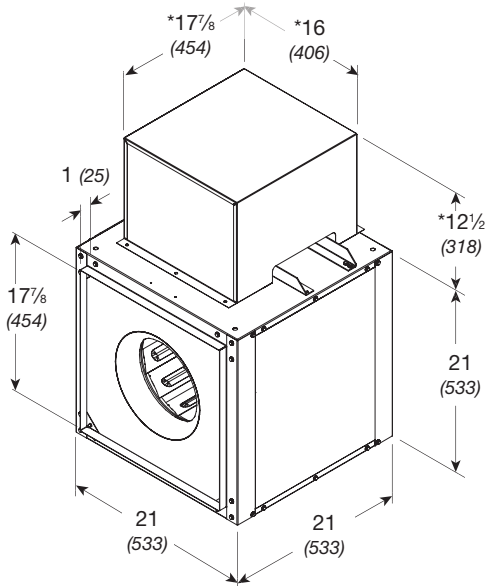
Model Number	Motor HP	Fan RPM	CFM / Static Pressure in Inches wg																			
			0.125	0.375	0.75	1	1.25	1.5	2	2.25	2.5	2.75										
BSQ-120-4	1/4	1000	CFM	1026	783																	
			BHP	0.096	0.102																	
			Sones	7.7	7.5																	
		1367	CFM	1471	1311	1020																
			BHP	0.24	0.25	0.26																
			Sones	10.9	10.5	10.0																
BSQ-120-3	1/3	1437	CFM	1555	1403	1145																
			BHP	0.28	0.29	0.3																
			Sones	11.7	11.3	10.4																
		1506	CFM	1636	1492	1252	1027															
			BHP	0.32	0.33	0.35	0.34															
			Sones	12.5	12.1	11.1	10.2															
BSQ-120-5	1/2	1615	CFM	1764	1631	1418	1245															
			BHP	0.39	0.41	0.43	0.43															
			Sones	13.8	13.6	12.4	11.8															
		1724	CFM	1892	1767	1571	1423	1241														
			BHP	0.47	0.49	0.52	0.52	0.52														
			Sones	15.2	15.3	13.8	13.6	12.4														
BSQ-120-7	3/4	1974	CFM	2183	2075	1908	1791	1663	1518													
			BHP	0.71	0.73	0.76	0.78	0.78	0.78													
			Sones	19.0	18.9	17.6	16.9	16.4	15.7													
		2073	CFM	2298	2195	2037	1928	1813	1683	1293												
			BHP	0.82	0.84	0.88	0.89	0.91	0.91	0.86												
			Sones	21	21	19.0	18.6	17.9	17.5	15.2												
BSQ-120-10	1	2172	CFM	2413	2314	2164	2062	1953	1836	1553												
			BHP	0.94	0.97	1	1.02	1.04	1.05	1.03												
			Sones	23	23	21	21	19.7	19.0	17.5												
		2329	CFM	2594	2503	2363	2268	2171	2069	1841	1695	1477										
			BHP	1.16	1.19	1.22	1.25	1.27	1.28	1.29	1.28	1.23										
			Sones	26	26	24	23	23	22	21	19.9	18.8										
2490	CFM	2779	2694	2563	2475	2387	2294	2093	1984	1852	1682											
	BHP	1.41	1.44	1.49	1.51	1.54	1.55	1.58	1.58	1.57	1.53											
	Sones	31	30	27	26	27	26	24	23	23	22											

MAX Bhp AT A GIVEN RPM = (rpm/2144)³
 MAXIMUM RPM = 2490
 TIP SPEED (ft/min) = rpm x 3.436
 MAX NEMA MOTOR FRAME SIZE = 145T
 OUTLET VELOCITY (ft/min) = 0.5805 x cfm

Performance certified is for installation type B: Free inlet, Ducted outlet. Performance ratings do not include the effects of appurtenances (accessories). Power rating (Bhp) does not include transmission losses.

The sound ratings shown are loudness values in fan sones at 1.5 m (5 feet) in a hemispherical free field calculated per AMCA Standard 301. Values shown are for installation type B: free inlet hemispherical fan sone levels.

BSQ 130 - Belt Drive



Damper size = 18 x 18 (457 x 457)

Unit weight** = 97 (44)

Housing thickness = 20 ga

Dimensions shown in inches (millimeters) and weight is shown in pounds (kilograms).

*Motor cover is optional. Size may be greater depending on motor.

**Weight shown is largest cataloged Open Drip Proof motor.

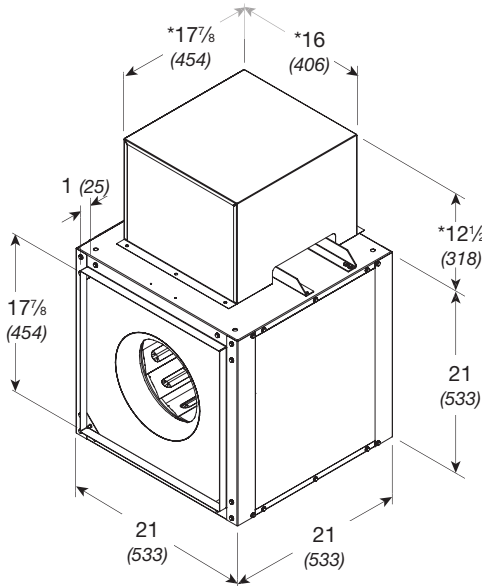
Model Number	Motor HP	Fan RPM	CFM / Static Pressure in Inches wg																
			0.125	0.25	0.5	0.75	1	1.25	1.5	1.75	2	2.5							
BSQ-130-4	1/4	900	CFM	1084	911														
			BHP	0.086	0.087														
			Sones	7.7	7.7														
		1031	CFM	1275	1151	709													
			BHP	0.13	0.13	0.12													
			Sones	8.8	8.7	8.5													
		1293	CFM	1652	1563	1328	958												
			BHP	0.24	0.25	0.26	0.24												
			Sones	11.8	11.6	11.2	10.6												
BSQ-130-3	1/3	1424	CFM	1838	1754	1568	1299												
			BHP	0.32	0.33	0.35	0.34												
			Sones	13.6	13.3	12.8	12.4												
BSQ-130-5	1/2	1527	CFM	1984	1902	1743	1515	1204											
			BHP	0.4	0.41	0.43	0.42	0.4											
			Sones	14.8	14.5	13.9	13.3	12.6											
		1630	CFM	2126	2050	1908	1714	1468	1121										
			BHP	0.48	0.49	0.52	0.52	0.51	0.47										
			Sones	15.9	15.6	15.0	14.3	13.6	12.7										
BSQ-130-7	3/4	1866	CFM	2448	2389	2266	2128	1949	1740	1462									
			BHP	0.72	0.73	0.76	0.78	0.78	0.76	0.73									
			Sones	19.9	19.5	18.8	18.2	17.2	15.9	14.7									
BSQ-130-10	1	1960	CFM	2576	2523	2403	2279	2120	1934	1714	1419								
			BHP	0.83	0.84	0.87	0.9	0.91	0.89	0.87	0.83								
			Sones	21	21	19.9	19.3	18.4	17.3	16.7	16.2								
		2053	CFM	2702	2655	2537	2426	2286	2117	1926	1686	1319							
			BHP	0.95	0.96	1	1.03	1.05	1.03	1.02	0.99	0.89							
			Sones	23	22	21	20	19.8	18.7	18.0	17.9	18.5							
BSQ-130-15	1 1/2	2202	CFM	2905	2864	2751	2653	2533	2390	2227	2045	1823							
			HP	1.17	1.18	1.22	1.25	1.28	1.28	1.27	1.26	1.22							
			Sones	26	25	24	22	22	21	20	19.9	21							
		2355	CFM	3112	3074	2971	2877	2777	2659	2514	2359	2189	1732						
			BHP	1.43	1.44	1.48	1.52	1.55	1.58	1.57	1.55	1.54	1.44						
			Sones	30	28	28	25	24	23	22	22	22	22	27					

MAX Bhp AT A GIVEN RPM = (rpm/2022)³
 MAXIMUM RPM = 2355
 TIP SPEED (ft/min) = rpm x 3.435
 MAX NEMA MOTOR FRAME SIZE = 145T
 OUTLET VELOCITY (ft/min) = 0.4571 x cfm

Performance certified is for installation type B: Free inlet, Ducted outlet. Performance ratings do not include the effects of appurtenances (accessories). Power rating (Bhp) does not include transmission losses.

The sound ratings shown are loudness values in fan sones at 1.5 m (5 feet) in a hemispherical free field calculated per AMCA Standard 301. Values shown are for installation type B: free inlet hemispherical fan sone levels.

BSQ 130HP - Belt Drive



Damper size = 18 x 18 (457 x 457)

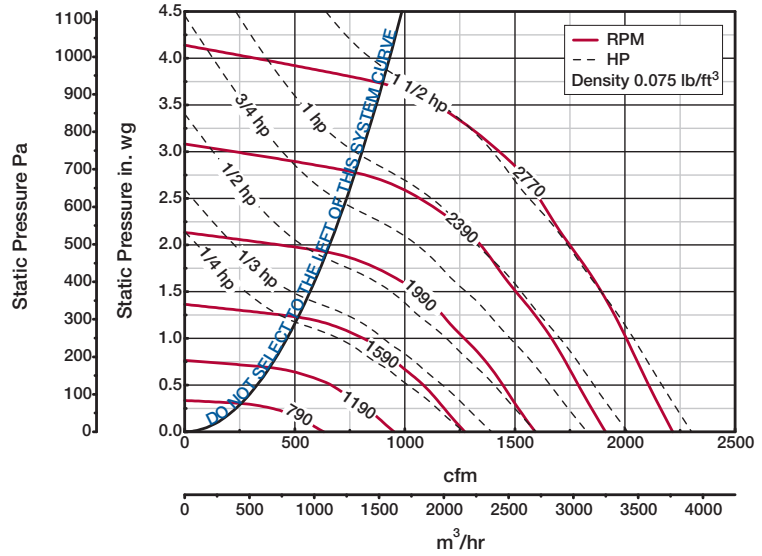
Unit weight** = 97 (44)

Housing thickness = 20 ga

Dimensions shown in inches (millimeters) and weight is shown in pounds (kilograms).

*Motor cover is optional. Size may be greater depending on motor.

**Weight shown is largest cataloged Open Drip Proof motor.



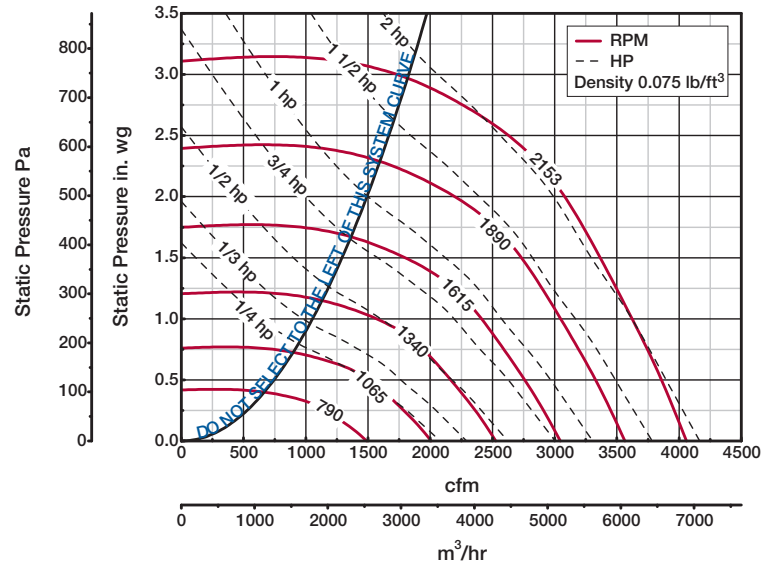
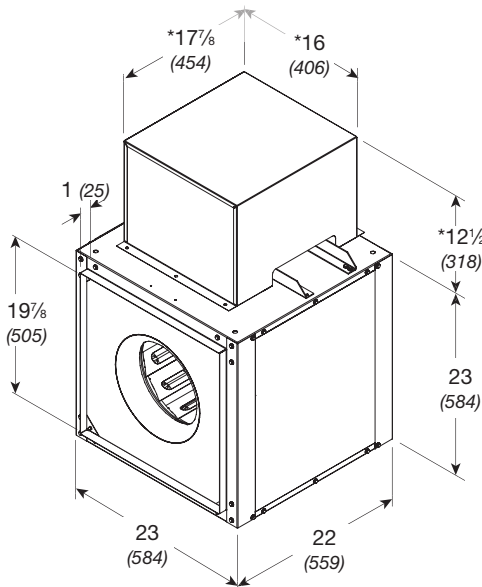
Model Number	Motor HP	Fan RPM	CFM / Static Pressure in Inches wg																	
			0.5	0.75	1	1.25	1.5	1.75	2	2.5	3	3.5								
BSQ-130HP-4	1/4	1300	CFM	784	549															
			BHP	0.16	0.15															
			Sones	11.2	10.5															
		1520	CFM	1014	884	670														
			BHP	0.25	0.26	0.25														
			Sones	11.4	11.2	10.8														
BSQ-130HP-3	1/3	1674	CFM	1161	1048	930	700													
			BHP	0.33	0.34	0.35	0.33													
			Sones	12.4	12.5	12.0	11.5													
BSQ-130HP-5	1/2	1795	CFM	1273	1176	1063	930	691												
			BHP	0.4	0.41	0.42	0.42	0.4												
			Sones	13.3	13.4	13.1	12.6	11.7												
		1916	CFM	1380	1294	1192	1091	925	680											
			BHP	0.48	0.5	0.5	0.52	0.51	0.48											
			Sones	14.6	14.3	14.2	13.9	13.0	11.9											
BSQ-130HP-7	3/4	2055	CFM	1501	1426	1339	1239	1146	971	756										
			BHP	0.59	0.6	0.62	0.62	0.65	0.62	0.59										
			Sones	16.9	15.9	15.4	15.3	14.9	13.8	12.6										
		2194	CFM	1621	1555	1477	1388	1297	1203	1033										
			BHP	0.71	0.73	0.75	0.76	0.77	0.78	0.76										
			Sones	19.2	18.4	17.1	17.0	17.2	16.5	15.1										
BSQ-130HP-10	1	2304	CFM	1715	1653	1582	1504	1414	1331	1229	865									
			BHP	0.81	0.84	0.86	0.87	0.87	0.9	0.9	0.84									
			Sones	21	20	19.0	18.2	18.6	18.4	17.6	14.5									
		2414	CFM	1808	1749	1685	1614	1532	1448	1369	1080									
			BHP	0.93	0.95	0.98	1	1.01	1.01	1.04	1									
			Sones	22	22	21	19.0	19.5	19.7	19.2	16.8									
BSQ-130HP-15	1 1/2	2589	CFM	1956	1901	1846	1781	1714	1635	1557	1392	1076								
			BHP	1.14	1.17	1.19	1.22	1.24	1.24	1.25	1.28	1.21								
			Sones	24	25	24	22	21	22	22	20	17.7								
		2770	CFM	2108	2056	2005	1950	1888	1825	1750	1608	1421	1110							
			BHP	1.39	1.42	1.44	1.47	1.5	1.52	1.52	1.56	1.54	1.48							
			Sones	27	28	27	26	25	24	24	23	22	19.2							

MAX Bhp AT A GIVEN RPM = (rpm/2377)³
 MAXIMUM RPM = 2770
 TIP SPEED (ft/min) = rpm x 3.435
 MAX NEMA MOTOR FRAME SIZE = 145T
 OUTLET VELOCITY (ft/min) = 0.4571 x cfm

Performance certified is for installation type B: Free inlet, Ducted outlet. Performance ratings do not include the effects of appurtenances (accessories). Power rating (Bhp) does not include transmission losses.

The sound ratings shown are loudness values in fan sones at 1.5 m (5 feet) in a hemispherical free field calculated per AMCA Standard 301. Values shown are for installation type B: free inlet hemispherical fan sone levels.

BSQ 140 - Belt Drive



Damper size = 20 x 20 (508 x 508)

Unit weight** = 111 (50)

Housing thickness = 18 ga

Dimensions shown in inches (millimeters) and weight is shown in pounds (kilograms).

*Motor cover is optional. Size may be greater depending on motor.

**Weight shown is largest cataloged Open Drip Proof motor.

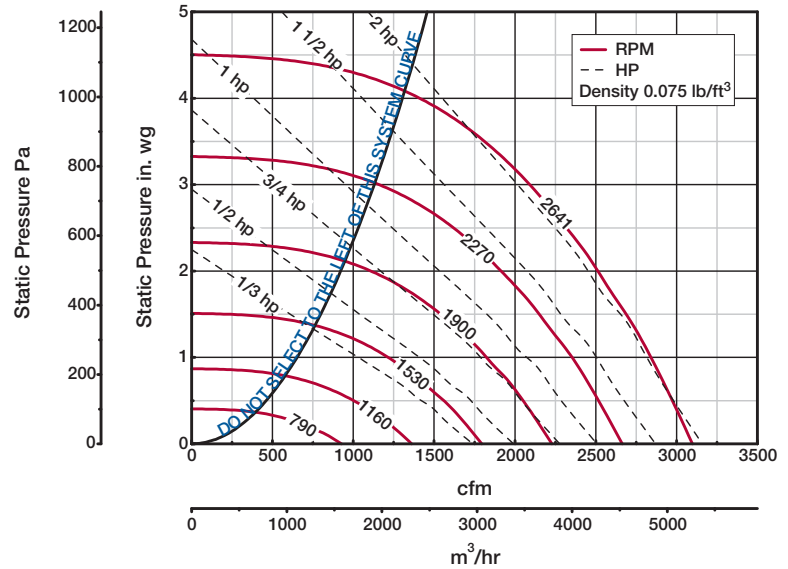
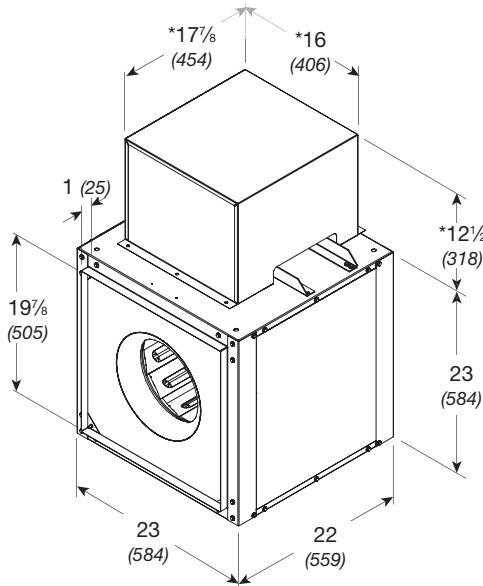
Model Number	Motor HP	Fan RPM	CFM / Static Pressure in Inches wg																			
			0.125	0.25	0.5	0.75	1	1.5	1.75	2	2.5	2.75										
BSQ-140-4	1/4	800	CFM	1362	1185																	
			BHP	0.1	0.11																	
			Sones	6.3	6.7																	
		1076	CFM	1927	1810	1538																
			BHP	0.24	0.25	0.26																
			Sones	10.7	10.7	10.2																
BSQ-140-3	1/3	1185	CFM	2142	2039	1807	1463															
			BHP	0.32	0.33	0.35	0.34															
			Sones	12.1	11.9	12.0	10.6															
BSQ-140-5	1/2	1271	CFM	2311	2217	2006	1741	1199														
			BHP	0.39	0.41	0.43	0.43	0.39														
			Sones	13.3	13.0	13.1	13.0	12.7														
		1356	CFM	2476	2392	2197	1979	1636														
			BHP	0.48	0.49	0.51	0.52	0.51														
			Sones	14.2	13.9	13.8	13.8	13.8														
BSQ-140-7	3/4	1553	CFM	2858	2787	2626	2449	2253	1447													
			BHP	0.71	0.73	0.75	0.78	0.79	0.7													
			Sones	16.2	16.0	16.0	15.6	15.3	13.9													
BSQ-140-10	1	1631	CFM	3008	2941	2790	2625	2446	1865													
			BHP	0.82	0.84	0.86	0.89	0.91	0.87													
			Sones	17.1	16.9	16.9	16.6	16.1	14.8													
		1709	CFM	3159	3094	2953	2798	2635	2177	1752												
			BHP	0.95	0.96	0.99	1.02	1.05	1.03	0.97												
			Sones	18.2	18.0	17.9	17.7	17.2	16.1	15.1												
BSQ-140-15	1 1/2	1956	CFM	3633	3576	3461	3330	3193	2894	2705	2457											
			BHP	1.41	1.43	1.47	1.49	1.53	1.57	1.57	1.55											
			Sones	24	23	24	24	23	22	21	20											
BSQ-140-20	2	2055	CFM	3822	3769	3662	3537	3410	3136	2982	2777	2168										
			BHP	1.63	1.66	1.7	1.73	1.75	1.82	1.82	1.81	1.7										
			Sones	27	26	28	27	26	25	24	23	21										
		2153	CFM	4009	3958	3856	3741	3622	3365	3225	3078	2627	2260									
			BHP	1.88	1.9	1.95	1.98	2	2.08	2.1	2.1	2.05	1.95									
			Sones	30	30	31	31	30	28	28	27	25	23									

MAX Bhp AT A GIVEN RPM = (rpm/1682)³
 MAXIMUM RPM = 2153
 TIP SPEED (ft/min) = rpm x 3.812
 MAX NEMA MOTOR FRAME SIZE = 145T
 OUTLET VELOCITY (ft/min) = 0.3692 x cfm

Performance certified is for installation type B: Free inlet, Ducted outlet. Performance ratings do not include the effects of appurtenances (accessories). Power rating (Bhp) does not include transmission losses.

The sound ratings shown are loudness values in fan sones at 1.5 m (5 feet) in a hemispherical free field calculated per AMCA Standard 301. Values shown are for installation type B: free inlet hemispherical fan sone levels.

BSQ 140HP - Belt Drive



Damper size = 20 x 20 (508 x 508)

Unit weight** = 111 (50)

Housing thickness = 18 ga

Dimensions shown in inches (millimeters) and weight is shown in pounds (kilograms).

*Motor cover is optional. Size may be greater depending on motor.

**Weight shown is largest cataloged Open Drip Proof motor.

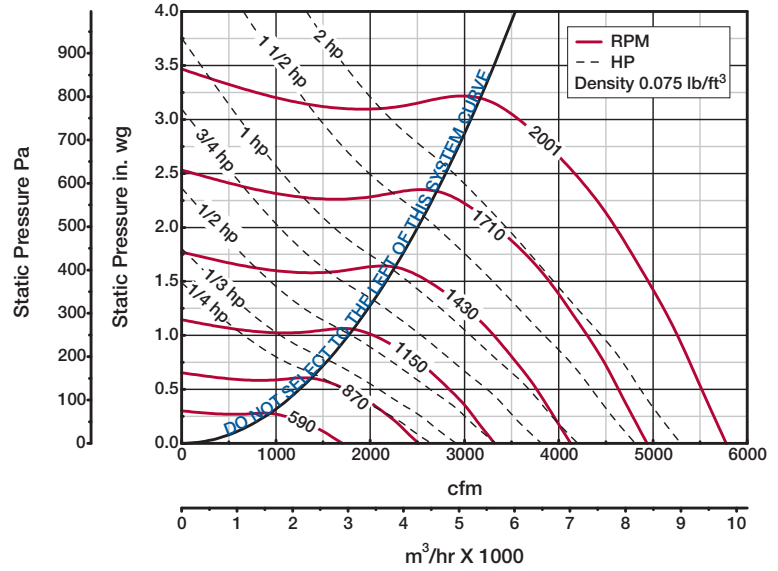
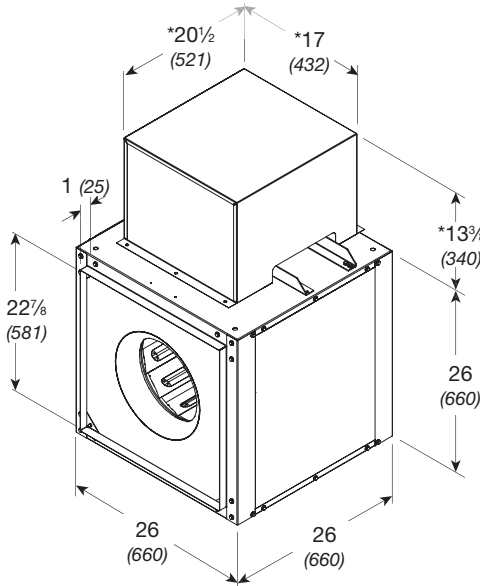
Model Number	Motor HP	Fan RPM	CFM / Static Pressure in Inches wg													
			0.5	0.75	1	1.25	1.5	1.75	2	2.5	3	3.5				
BSQ-140HP-3	1/3	1340	CFM	1285	1082											
			BHP	0.27	0.27											
			Sones	11.4	11.2											
		1453	CFM	1449	1281	1058										
			BHP	0.35	0.35	0.34										
			Sones	13.3	12.8	12.4										
BSQ-140HP-5	1/2	1559	CFM	1601	1452	1270	948									
			BHP	0.42	0.43	0.43	0.39									
			Sones	15.1	14.6	14.2	13.4									
		1664	CFM	1742	1607	1456	1264	800								
			BHP	0.51	0.52	0.52	0.52	0.43								
			Sones	16.5	15.9	15.5	15.0	13.8								
BSQ-140HP-7	3/4	1785	CFM	1902	1782	1652	1495	1307								
			BHP	0.63	0.64	0.65	0.65	0.64								
			Sones	17.9	17.3	16.7	16.1	15.5								
		1905	CFM	2057	1954	1832	1701	1548	1363							
			BHP	0.76	0.77	0.79	0.79	0.79	0.77							
			Sones	19.7	19.1	18.4	17.7	17.1	16.7							
BSQ-140HP-10	1	2096	CFM	2298	2211	2108	1998	1878	1741	1581						
			BHP	1.01	1.02	1.03	1.05	1.05	1.05	1.04						
			Sones	24	23	22	21	20	20	19.7						
BSQ-140HP-15	1 1/2	2197	CFM	2425	2344	2253	2145	2041	1918	1783	1299					
			BHP	1.16	1.18	1.18	1.21	1.21	1.21	1.21	1.08					
			Sones	26	25	24	23	22	22	22	22					
		2399	CFM	2676	2603	2525	2437	2339	2244	2134	1882	1381				
			BHP	1.5	1.52	1.53	1.54	1.57	1.57	1.57	1.56	1.39				
			Sones	30	29	28	27	26	25	24	23	23				
BSQ-140HP-20	2	2520	CFM	2825	2755	2684	2606	2515	2423	2330	2107	1839				
			BHP	1.73	1.76	1.78	1.78	1.81	1.82	1.82	1.82	1.79				
			Sones	32	31	30	30	28	27	26	25	24				
		2641	CFM	2973	2907	2841	2768	2688	2599	2512	2319	2088	1759			
			BHP	1.98	2.01	2.04	2.05	2.06	2.09	2.1	2.1	2.09	2			
			Sones	33	33	33	32	31	30	29	27	26	24			

MAX Bhp AT A GIVEN RPM = (rpm/2064)³
 MAXIMUM RPM = 2641
 TIP SPEED (ft/min) = rpm x 3.812
 MAX NEMA MOTOR FRAME SIZE = 145T
 OUTLET VELOCITY (ft/min) = 0.3692 x cfm

Performance certified is for installation type B: Free inlet, Ducted outlet. Performance ratings do not include the effects of appurtenances (accessories). Power rating (Bhp) does not include transmission losses.

The sound ratings shown are loudness values in fan sones at 1.5 m (5 feet) in a hemispherical free field calculated per AMCA Standard 301. Values shown are for installation type B: free inlet hemispherical fan sone levels.

BSQ 160 - Belt Drive



Damper size = 23 x 23 (584 x 584)
 Unit weight** = 208 (94)
 Housing thickness = 18 ga
 Dimensions shown in inches (millimeters) and weight is shown in pounds (kilograms).
 *Motor cover is optional. Size may be greater depending on motor.
 **Weight shown is largest cataloged Open Drip Proof motor.

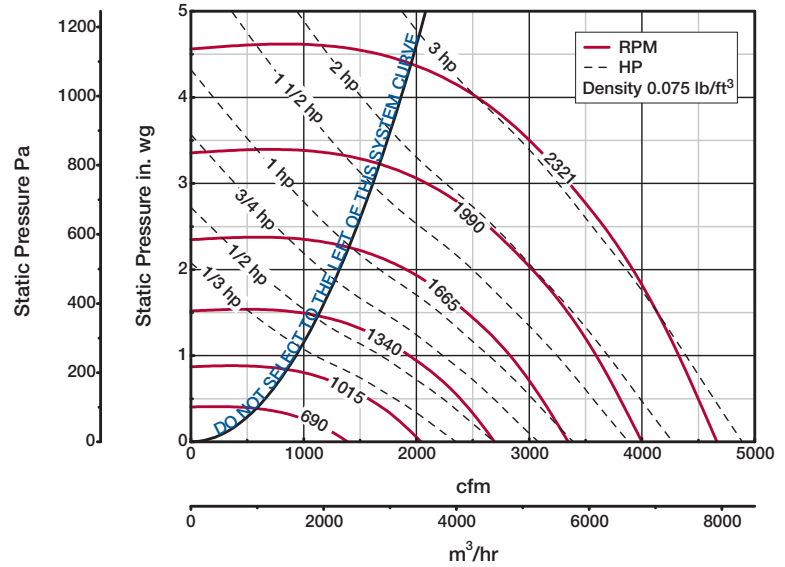
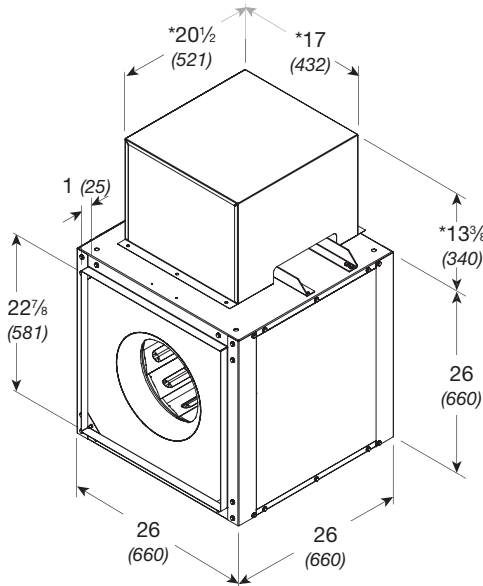
Model Number	Motor HP	Fan RPM	CFM / Static Pressure in Inches wg															
			0.125	0.5	0.75	1	1.5	1.75	2	2.25	2.5	3						
BSQ-160-4	1/4	650	CFM	1671														
			BHP	0.1														
			Sones	6.6														
BSQ-160-3	1/3	962	CFM	2373	1759													
			BHP	0.23	0.26													
			Sones	8.8	8.2													
BSQ-160-5	1/2	1101	CFM	3061	2665	2301												
			BHP	0.46	0.51	0.52												
			Sones	12.4	11.4	11.2												
BSQ-160-7	3/4	1261	CFM	3538	3212	2946	2611											
			BHP	0.68	0.74	0.78	0.78											
			Sones	15.5	14.6	14.4	13.2											
BSQ-160-10	1	1387	CFM	3911	3628	3402	3146	2311										
			BHP	0.9	0.97	1.01	1.04	0.96										
			Sones	18.0	17.2	16.9	16.1	13.1										
BSQ-160-15	1 1/2	1488	CFM	4209	3949	3745	3519	2921	2420									
			BHP	1.1	1.18	1.23	1.27	1.27	1.17									
			Sones	19.9	19.0	18.9	18.4	15.9	14.5									
		1588	CFM	4503	4259	4079	3880	3389	3055	2566								
			BHP	1.33	1.42	1.47	1.52	1.56	1.53	1.42								
			Sones	22	21	22	21	18.9	17.5	16.1								
BSQ-160-20	2	1748	CFM	4973	4751	4603	4425	4037	3802	3528	3185							
			BHP	1.77	1.88	1.92	1.98	2.08	2.09	2.07	2.01							
			Sones	28	26	27	27	24	23	22	19.9							
BSQ-160-30	3	1875	CFM	5345	5138	5000	4847	4501	4312	4091	3844	3530						
			BHP	2.18	2.3	2.35	2.41	2.53	2.57	2.58	2.56	2.5						
			Sones	33	31	31	32	30	29	27	25	23						
		2001	CFM	5713	5519	5390	5260	4946	4774	4596	4392	4160	3566					
			BHP	2.64	2.77	2.84	2.89	3.03	3.08	3.12	3.14	3.12	2.99					
			Sones	40	36	36	38	38	36	34	31	29	26					

MAX Bhp AT A GIVEN RPM = (rpm/1366)³
 MAXIMUM RPM = 2001
 TIP SPEED (ft/min) = rpm x 4.384
 MAX NEMA MOTOR FRAME SIZE = 184T
 OUTLET VELOCITY (ft/min) = 0.2782 x cfm

Performance certified is for installation type B: Free inlet, Ducted outlet. Performance ratings do not include the effects of appurtenances (accessories). Power rating (Bhp) does not include transmission losses.

The sound ratings shown are loudness values in fan sones at 1.5 m (5 feet) in a hemispherical free field calculated per AMCA Standard 301. Values shown are for installation type B: free inlet hemispherical fan sone levels.

BSQ 160HP - Belt Drive



Damper size = 23 x 23 (584 x 584)

Unit weight** = 208 (94)

Housing thickness = 18 ga

Dimensions shown in inches (millimeters) and weight is shown in pounds (kilograms).

*Motor cover is optional. Size may be greater depending on motor.

**Weight shown is largest cataloged Open Drip Proof motor.

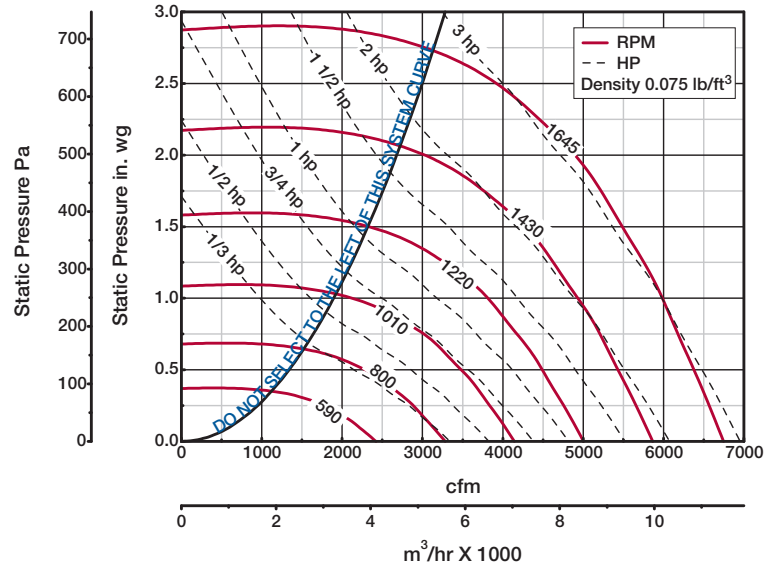
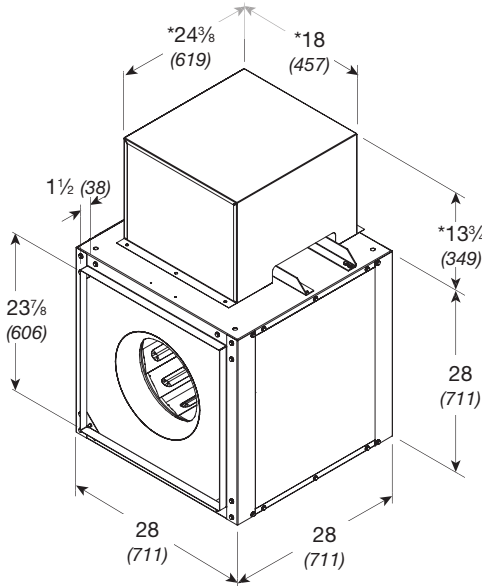
Model Number	Motor HP	Fan RPM	CFM / Static Pressure in Inches wg																			
			0.5	0.75	1	1.25	1.5	2	2.5	3	3.5	4										
BSQ-160HP-3	1/3	1050	CFM	1669	1290																	
			BHP	0.29	0.28																	
			Sones	7.8	7.2																	
		1116	CFM	1844	1533																	
			BHP	0.35	0.35																	
			Sones	8.6	8.0																	
BSQ-160HP-5	1/2	1277	CFM	2237	2020	1731	1305															
			BHP	0.5	0.52	0.52	0.49															
			Sones	10.8	10.1	9.6	8.9															
BSQ-160HP-7	3/4	1462	CFM	2664	2497	2299	2050	1720														
			BHP	0.74	0.77	0.79	0.78	0.76														
			Sones	14.1	13.4	12.9	12.7	12.6														
BSQ-160HP-10	1	1609	CFM	2986	2845	2688	2497	2269	1601													
			BHP	0.97	1	1.03	1.05	1.04	0.97													
			Sones	17.8	17.3	16.7	16.3	16.4	16.9													
BSQ-160HP-15	1 1/2	1726	CFM	3239	3116	2974	2814	2630	2157													
			BHP	1.18	1.22	1.25	1.28	1.29	1.26													
			Sones	22	21	21	19.8	19.8	21													
		1842	CFM	3488	3377	3248	3115	2954	2570	2013												
			BHP	1.42	1.47	1.51	1.54	1.56	1.56	1.49												
			Sones	25	24	24	23	22	23	25												
BSQ-160HP-20	2	1935	CFM	3686	3580	3464	3338	3200	2859	2435												
			BHP	1.63	1.68	1.73	1.77	1.8	1.82	1.79												
			Sones	27	25	25	25	24	24	25												
		2027	CFM	3881	3780	3676	3555	3434	3135	2763	2248											
			BHP	1.87	1.92	1.97	2.01	2.05	2.09	2.07	1.99											
			Sones	28	28	25	27	26	26	27	28											
BSQ-160HP-30	3	2174	CFM	4191	4097	4002	3897	3785	3536	3230	2866	2357										
			BHP	2.29	2.34	2.4	2.45	2.49	2.56	2.58	2.55	2.44										
			Sones	32	31	28	28	29	29	29	30	31										
		2321	CFM	4499	4411	4322	4234	4129	3918	3660	3351	3001	2505									
			BHP	2.77	2.83	2.89	2.95	3	3.09	3.14	3.13	3.09	2.97									
			Sones	36	34	34	28	31	32	33	33	33	34									

MAX Bhp AT A GIVEN RPM = (rpm/1584)³
 MAXIMUM RPM = 2321
 TIP SPEED (ft/min) = rpm x 4.384
 MAX NEMA MOTOR FRAME SIZE = 184T
 OUTLET VELOCITY (ft/min) = 0.2782 x cfm

Performance certified is for installation type B: Free inlet, Ducted outlet. Performance ratings do not include the effects of appurtenances (accessories). Power rating (Bhp) does not include transmission losses.

The sound ratings shown are loudness values in fan sones at 1.5 m (5 feet) in a hemispherical free field calculated per AMCA Standard 301. Values shown are for installation type B: free inlet hemispherical fan sone levels.

BSQ 180 - Belt Drive



Damper size = 24 x 24 (610 x 610)
 Unit weight** = 245 (111)
 Housing thickness = 18 ga
 Dimensions shown in inches (millimeters) and weight is shown in pounds (kilograms).
 *Motor cover is optional. Size may be greater depending on motor.
 **Weight shown is largest cataloged Open Drip Proof motor.

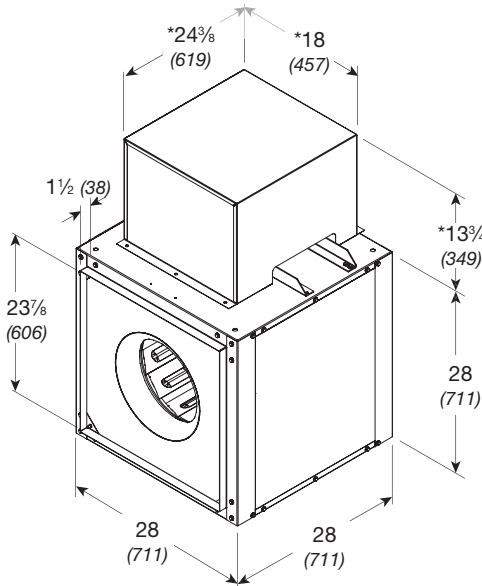
Model Number	Motor HP	Fan RPM	CFM / Static Pressure in Inches wg																	
			0.125	0.25	0.5	0.75	1	1.25	1.5	1.75	2	2.5								
BSQ-180-3	1/3	700	CFM	2649	2387															
			BHP	0.23	0.24															
			Sones	10.0	9.6															
BSQ-180-5	1/2	905	CFM	3051	2845	2217														
			BHP	0.32	0.34	0.35														
			Sones	10.6	10.9	9.6														
BSQ-180-7	3/4	1037	CFM	3546	3366	2928	2175													
			BHP	0.48	0.49	0.52	0.49													
			Sones	12.2	12.1	11.6	10.8													
BSQ-180-10	1	1141	CFM	4109	3955	3616	3179	2432												
			BHP	0.71	0.73	0.77	0.79	0.73												
			Sones	14.5	14.2	13.5	13.4	12.8												
BSQ-180-15	1 1/2	1224	CFM	4549	4412	4127	3760	3290	2523											
			BHP	0.94	0.96	1.01	1.04	1.04	0.96											
			Sones	16.5	16.1	15.4	15.0	14.9	13.8											
		1306	CFM	4898	4774	4507	4194	3836	3300	2331										
			BHP	1.15	1.18	1.23	1.28	1.29	1.27	1.08										
			Sones	18.4	17.7	17.1	16.5	16.5	15.8	14.4										
BSQ-180-20	2	1372	CFM	5242	5128	4878	4610	4281	3884	3332										
			BHP	1.4	1.43	1.48	1.53	1.56	1.57	1.5										
			Sones	20	19.5	18.8	18.3	17.8	17.5	16.8										
		1437	CFM	5519	5410	5174	4937	4630	4308	3854	3218									
			BHP	1.62	1.65	1.71	1.75	1.81	1.82	1.81	1.7									
			Sones	22	21	20	19.8	19.0	18.7	18.3	17.5									
BSQ-180-30	3	1541	CFM	5790	5686	5463	5236	4964	4662	4298	3814	3106								
			BHP	1.86	1.89	1.95	2	2.06	2.09	2.09	2.04	1.89								
			Sones	23	22	22	21	21	19.7	19.6	19.1	18.2								
		1645	CFM	6224	6127	5922	5710	5488	5213	4927	4567	4116								
			BHP	2.29	2.32	2.38	2.45	2.5	2.56	2.58	2.57	2.52								
			Sones	26	25	25	24	24	22	22	21	21								
BSQ-180-30	3	1645	CFM	6656	6566	6377	6179	5981	5744	5485	5216	4866	3898							
			BHP	2.78	2.81	2.88	2.95	3.01	3.07	3.12	3.14	3.13	2.94							
			Sones	29	28	28	27	27	26	24	24	24	24	23						

MAX Bhp AT A GIVEN RPM = (rpm/1125)³
 MAXIMUM RPM = 1645
 TIP SPEED (ft/min) = rpm x 4.843
 MAX NEMA MOTOR FRAME SIZE = 184T
 OUTLET VELOCITY (ft/min) = 0.2553 x cfm

Performance certified is for installation type B: Free inlet, Ducted outlet. Performance ratings do not include the effects of appurtenances (accessories). Power rating (Bhp) does not include transmission losses.

The sound ratings shown are loudness values in fan sones at 1.5 m (5 feet) in a hemispherical free field calculated per AMCA Standard 301. Values shown are for installation type B: free inlet hemispherical fan sone levels.

BSQ 180HP - Belt Drive



Damper size = 24 x 24 (610 x 610)

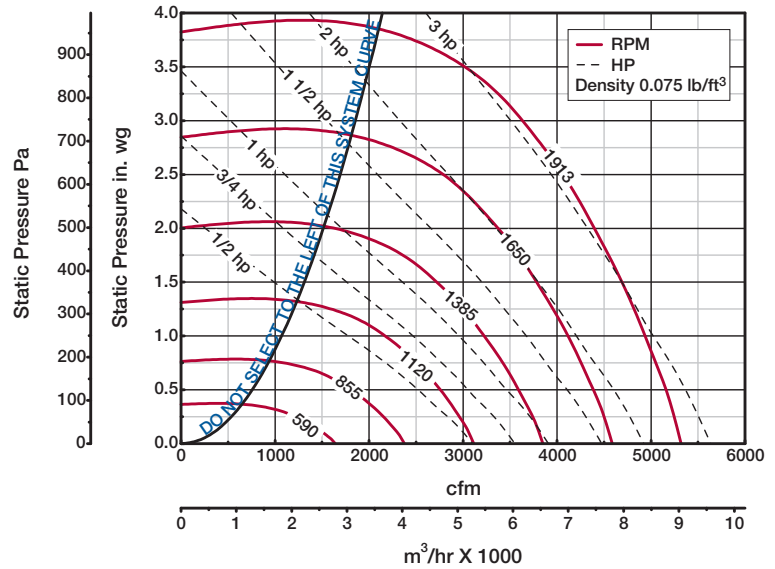
Unit weight** = 245 (111)

Housing thickness = 18 ga

Dimensions shown in inches (millimeters) and weight is shown in pounds (kilograms).

*Motor cover is optional. Size may be greater depending on motor.

**Weight shown is largest cataloged Open Drip Proof motor.



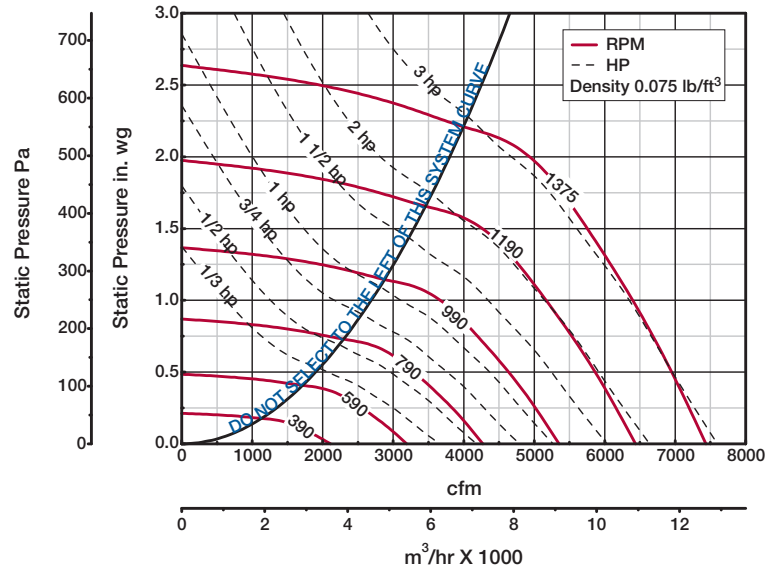
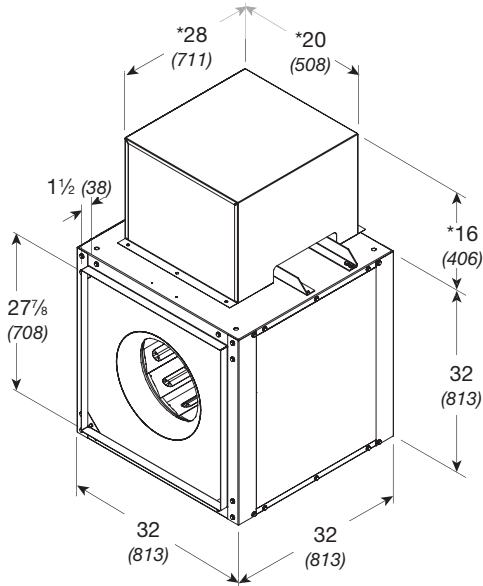
Model Number	Motor HP	Fan RPM	CFM / Static Pressure in Inches wg														
			0.5	0.75	1	1.25	1.5	1.75	2	2.5	3	3.5					
BSQ-180HP-5	1/2	1000	CFM	2352	2018												
			BHP	0.44	0.45												
			Sones	10.9	10.0												
		1083	CFM	2636	2364	1984											
			BHP	0.55	0.57	0.56											
			Sones	12.1	11.2	10.5											
BSQ-180HP-7	3/4	1166	CFM	2907	2672	2379	1951										
			BHP	0.67	0.7	0.71	0.69										
			Sones	13.4	12.6	11.7	10.9										
		1249	CFM	3169	2964	2724	2406	1945									
			BHP	0.81	0.85	0.87	0.87	0.82									
			Sones	14.7	14.1	13.2	12.4	11.4									
BSQ-180HP-10	1	1332	CFM	3428	3247	3032	2782	2458	1513								
			BHP	0.98	1.02	1.05	1.06	1.05	0.83								
			Sones	16.3	15.7	14.8	14.0	13.1	11.0								
		1415	CFM	3681	3518	3328	3116	2857	2537								
			BHP	1.15	1.2	1.24	1.26	1.27	1.26								
			Sones	18.0	17.4	16.6	15.6	14.8	14.0								
BSQ-180HP-15	1 1/2	1498	CFM	3931	3782	3614	3423	3212	2944	2622							
			BHP	1.35	1.41	1.45	1.49	1.51	1.5	1.48							
			Sones	19.9	19.1	18.6	17.6	16.8	15.9	15.0							
		1581	CFM	4180	4043	3893	3718	3528	3312	3049							
			BHP	1.57	1.64	1.69	1.73	1.76	1.77	1.77							
			Sones	22	21	20	19.7	18.9	18.2	17.3							
BSQ-180HP-20	2	1664	CFM	4425	4298	4158	4003	3833	3648	3429	2859						
			BHP	1.81	1.89	1.95	1.99	2.03	2.06	2.07	2.01						
			Sones	24	23	23	22	21	21	19.7	17.9						
		1747	CFM	4669	4550	4421	4285	4125	3956	3780	3308	2100					
			BHP	2.08	2.16	2.23	2.29	2.33	2.36	2.39	2.38	1.94					
			Sones	27	26	25	24	24	23	23	21	16.9					
BSQ-180HP-30	3	1913	CFM	5155	5050	4938	4816	4691	4545	4396	4058	3620	3006				
			BHP	2.7	2.78	2.88	2.95	3	3.05	3.09	3.14	3.12	2.96				
			Sones	33	32	31	30	30	29	29	28	26	23				

MAX Bhp AT A GIVEN RPM = (rpm/1306)³
 MAXIMUM RPM = 1913
 TIP SPEED (ft/min) = rpm x 4.843
 MAX NEMA MOTOR FRAME SIZE = 184T
 OUTLET VELOCITY (ft/min) = 0.2553 x cfm

Performance certified is for installation type B: Free inlet, Ducted outlet. Performance ratings do not include the effects of appurtenances (accessories). Power rating (Bhp) does not include transmission losses.

The sound ratings shown are loudness values in fan sones at 1.5 m (5 feet) in a hemispherical free field calculated per AMCA Standard 301. Values shown are for installation type B: free inlet hemispherical fan sone levels.

BSQ 200 - Belt Drive



Damper size = 28 x 28 (711 x 711)

Unit weight** = 314 (142)

Housing thickness = 18 ga

Dimensions shown in inches (millimeters) and weight is shown in pounds (kilograms).

*Motor cover is optional. Size may be greater depending on motor.

**Weight shown is largest cataloged Open Drip Proof motor.

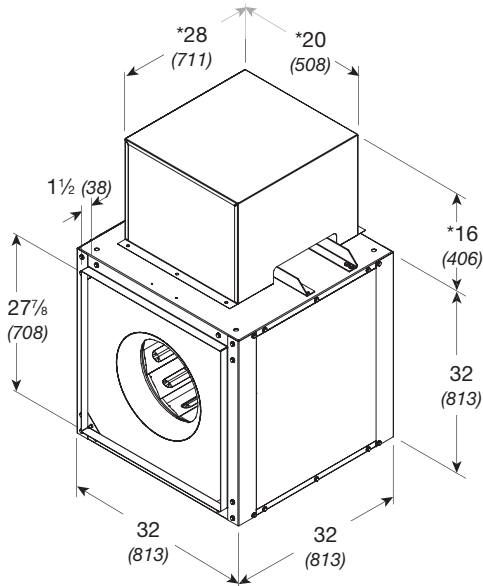
Model Number	Motor HP	Fan RPM	CFM / Static Pressure in Inches wg														
			0.125	0.25	0.5	0.75	0.875	1	1.25	1.5	1.75	2					
BSQ-200-3	1/3	600	CFM	2960	2616												
			BHP	0.25	0.26												
			Sones	11.1	10.6												
		660	CFM	3315	3018	2042											
			BHP	0.33	0.34	0.33											
			Sones	11.7	11.2	10.5											
BSQ-200-5	1/2	756	CFM	3867	3624	3036											
			BHP	0.49	0.5	0.52											
			Sones	12.7	12.0	11.7											
BSQ-200-7	3/4	811	CFM	4179	3959	3442	2563										
			BHP	0.6	0.62	0.64	0.62										
			Sones	13.4	12.8	12.3	13.0										
		865	CFM	4484	4285	3812	3239	2516									
			BHP	0.73	0.75	0.77	0.79	0.72									
			Sones	14.1	13.7	13.1	13.0	13.9									
BSQ-200-10	1	952	CFM	4972	4796	4391	3916	3646	3203								
			BHP	0.96	0.99	1.01	1.04	1.05	1.03								
			Sones	15.7	15.5	15.1	14.9	14.5	14.4								
BSQ-200-15	1 1/2	1090	CFM	5741	5587	5253	4874	4672	4452	3878							
			BHP	1.43	1.47	1.51	1.53	1.55	1.56	1.56							
			Sones	19.1	18.9	18.7	18.5	18.6	18.7	17.3							
BSQ-200-20	2	1145	CFM	6046	5899	5588	5240	5047	4855	4413	3580						
			BHP	1.66	1.69	1.74	1.77	1.79	1.81	1.82	1.73						
			Sones	21	20	20	20	20	20	19.2	18.6						
		1200	CFM	6350	6210	5920	5597	5416	5233	4836	4316						
			BHP	1.9	1.94	2	2.02	2.04	2.06	2.09	2.08						
			Sones	22	22	21	21	21	21	21	19.8						
BSQ-200-30	3	1287	CFM	6830	6699	6439	6138	5988	5818	5475	5088	4557					
			BHP	2.34	2.38	2.46	2.49	2.5	2.52	2.56	2.58	2.56					
			Sones	25	24	24	24	23	23	23	23	22					
		1375	CFM	7314	7192	6948	6677	6537	6396	6076	5753	5379	4862				
			BHP	2.85	2.89	2.98	3.02	3.03	3.05	3.09	3.14	3.15	3.13				
			Sones	27	27	26	26	26	26	25	25	25	24				

MAX Bhp AT A GIVEN RPM = (rpm/937)³
 MAXIMUM RPM = 1375
 TIP SPEED (ft/min) = rpm x 5.595
 MAX NEMA MOTOR FRAME SIZE = 184T
 OUTLET VELOCITY (ft/min) = 0.1870 x cfm

Performance certified is for installation type B: Free inlet, Ducted outlet. Performance ratings do not include the effects of appurtenances (accessories). Power rating (Bhp) does not include transmission losses.

The sound ratings shown are loudness values in fan sones at 1.5 m (5 feet) in a hemispherical free field calculated per AMCA Standard 301. Values shown are for installation type B: free inlet hemispherical fan sone levels.

BSQ 200HP - Belt Drive



Damper size = 28 x 28 (711 x 711)

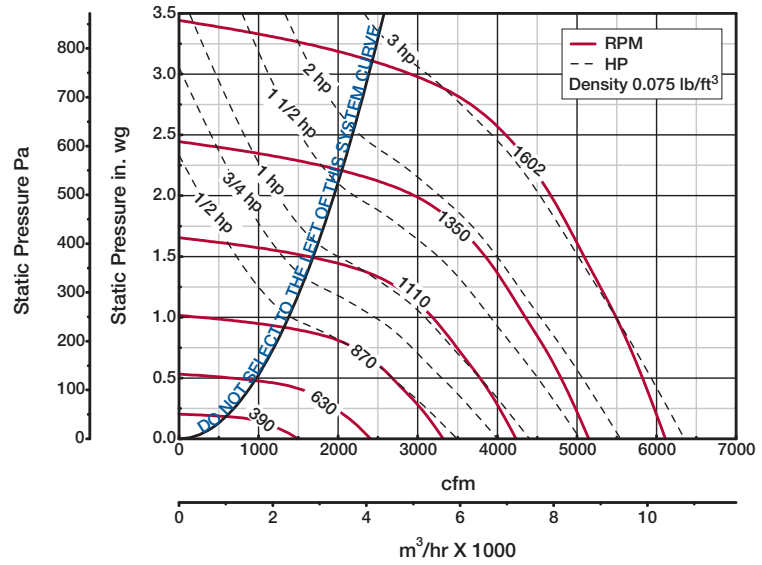
Unit weight** = 314 (142)

Housing thickness = 18 ga

Dimensions shown in inches (millimeters) and weight is shown in pounds (kilograms).

*Motor cover is optional. Size may be greater depending on motor.

**Weight shown is largest cataloged Open Drip Proof motor.



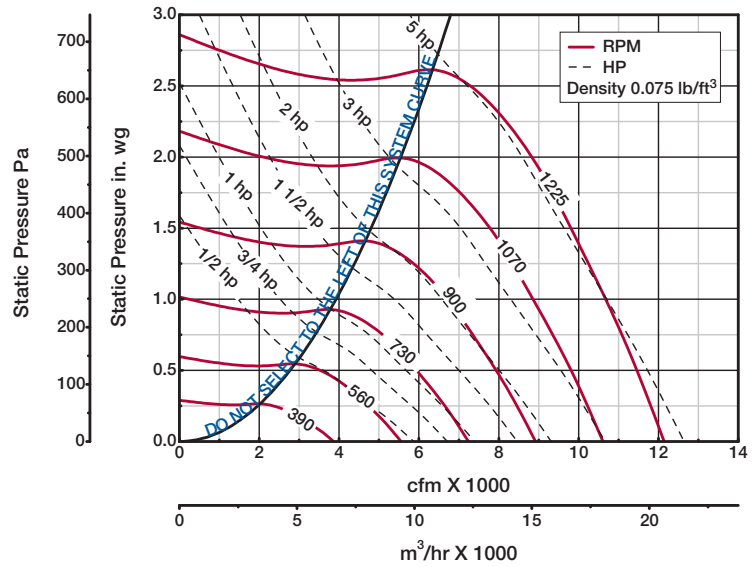
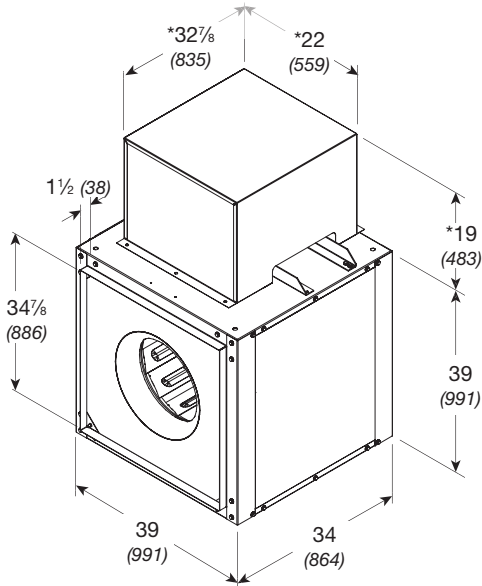
Model Number	Motor HP	Fan RPM	CFM / Static Pressure in Inches wg														
			0.5	0.75	1	1.25	1.5	1.75	2	2.25	2.5	3					
BSQ-200HP-5	1/2	850	CFM	2580	2037												
			BHP	0.47	0.47												
			Sones	12.3	11.6												
		880	CFM	2724	2258												
			BHP	0.51	0.52												
			Sones	12.8	12.3												
BSQ-200HP-7	3/4	945	CFM	3032	2656	1943											
			BHP	0.63	0.65	0.61											
			Sones	14.2	14.1	12.4											
		1009	CFM	3327	3003	2556											
			BHP	0.76	0.78	0.78											
			Sones	15.6	15.9	14.7											
BSQ-200HP-10	1	1111	CFM	3787	3495	3179	2732										
			BHP	1	1.03	1.05	1.04										
			Sones	16.9	17.4	16.9	15.3										
		1191	CFM	4129	3870	3594	3263	2760									
			BHP	1.22	1.26	1.28	1.29	1.27									
			Sones	17.9	18.0	18.9	17.2	15.7									
BSQ-200HP-15	1 1/2	1271	CFM	4466	4235	3979	3716	3379	2808								
			BHP	1.47	1.51	1.55	1.57	1.57	1.52								
			Sones	18.8	18.9	21	19.8	17.5	16.2								
		1335	CFM	4733	4523	4282	4035	3748	3382	2732							
			BHP	1.69	1.74	1.78	1.81	1.82	1.81	1.72							
			Sones	19.7	19.9	21	22	19.6	17.7	16.5							
BSQ-200HP-20	2	1399	CFM	4998	4803	4578	4344	4108	3802	3409	2702						
			BHP	1.93	1.99	2.03	2.07	2.09	2.09	2.08	1.95						
			Sones	21	21	21	24	22	19.5	18.1	17.0						
		1467	CFM	5277	5092	4888	4667	4442	4190	3898	3473	2724					
			BHP	2.22	2.28	2.33	2.37	2.4	2.42	2.42	2.39	2.22					
			Sones	23	22	22	24	25	22	19.6	18.7	17.6					
BSQ-200HP-30	3	1602	CFM	5823	5659	5489	5291	5089	4883	4669	4401	4089	2894				
			BHP	2.86	2.93	3	3.04	3.08	3.12	3.15	3.15	3.14	2.86				
			Sones	26	26	25	25	27	27	25	23	22	20				

MAX Bhp AT A GIVEN RPM = (rpm/1093)³
 MAXIMUM RPM = 1602
 TIP SPEED (ft/min) = rpm x 5.595
 MAX NEMA MOTOR FRAME SIZE = 184T
 OUTLET VELOCITY (ft/min) = 0.1870 x cfm

Performance certified is for installation type B: Free inlet, Ducted outlet. Performance ratings do not include the effects of appurtenances (accessories). Power rating (Bhp) does not include transmission losses.

The sound ratings shown are loudness values in fan sones at 1.5 m (5 feet) in a hemispherical free field calculated per AMCA Standard 301. Values shown are for installation type B: free inlet hemispherical fan sone levels.

BSQ 240 - Belt Drive



Damper size = 35 x 35 (889 x 889)

Unit weight** = 415 (188)

Housing thickness = 18 ga

Dimensions shown in inches (millimeters) and weight is shown in pounds (kilograms).

*Motor cover is optional. Size may be greater depending on motor.

**Weight shown is largest cataloged Open Drip Proof motor.

Model Number	Motor HP	Fan RPM	CFM / Static Pressure in Inches wg												
			0.125	0.25	0.5	0.75	1	1.25	1.5	1.75	2	2.5			
BSQ-240-5	1/2	500	CFM	4518	4001										
			BHP	0.33	0.35										
			Sones	10.7	10.2										
BSQ-240-7	3/4	651	CFM	5269	4833	3685									
			BHP	0.48	0.51	0.51									
			Sones	12.3	11.8	10.8									
BSQ-240-10	1	684	CFM	6475	6135	5368	4273								
			BHP	0.81	0.85	0.9	0.89								
			Sones	15.2	14.9	13.8	12.6								
BSQ-240-15	1 1/2	826	CFM	6816	6498	5782	4884								
			BHP	0.93	0.97	1.03	1.03								
			Sones	16.2	15.9	14.9	13.6								
BSQ-240-20	2	903	CFM	7935	7680	7086	6425	5604							
			BHP	1.41	1.45	1.54	1.59	1.58							
			Sones	19.5	19.5	18.7	17.4	16.2							
BSQ-240-30	3	969	CFM	8720	8488	7960	7384	6756	5889						
			BHP	1.83	1.88	1.97	2.05	2.09	2.05						
			Sones	22	22	22	20	18.9	17.9						
BSQ-240-50	5	1098	CFM	9390	9174	8695	8176	7612	6962	6075					
			BHP	2.25	2.31	2.41	2.5	2.56	2.57	2.52					
			Sones	25	24	24	23	21	20	19.4					
BSQ-240-50	5	1225	CFM	10048	9845	9409	8936	8421	7881	7219	6268				
			BHP	2.73	2.79	2.9	3.01	3.08	3.14	3.11	3.03				
			Sones	28	27	27	26	23	22	22	21				
BSQ-240-50	5	1098	CFM	10694	10503	10105	9660	9192	8695	8160	7510	6451			
			BHP	3.26	3.32	3.44	3.56	3.65	3.72	3.76	3.72	3.58			
			Sones	31	31	30	29	26	24	24	23	22			
BSQ-240-50	5	1225	CFM	11973	11802	11460	11070	10671	10245	9804	9345	8797	7124		
			BHP	4.5	4.58	4.72	4.84	4.97	5.07	5.16	5.22	5.2	4.95		
			Sones	41	40	38	37	34	31	28	28	28	28	26	

MAX Bhp AT A GIVEN RPM = (rpm/706)³

MAXIMUM RPM = 1225

TIP SPEED (ft/min) = rpm x 6.414

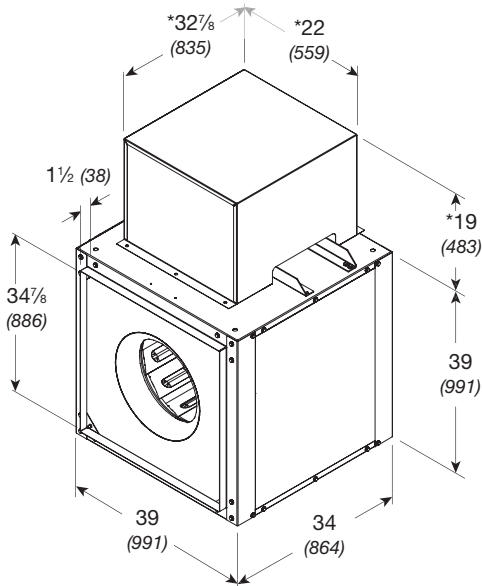
MAX NEMA MOTOR FRAME SIZE = 215T

OUTLET VELOCITY (ft/min) = 0.1192 x cfm

Performance certified is for installation type B: Free inlet, Ducted outlet. Performance ratings do not include the effects of appurtenances (accessories). Power rating (Bhp) does not include transmission losses.

The sound ratings shown are loudness values in fan sones at 1.5 m (5 feet) in a hemispherical free field calculated per AMCA Standard 301. Values shown are for installation type B: free inlet hemispherical fan sone levels.

BSQ 240HP - Belt Drive



Damper size = 35 x 35 (889 x 889)

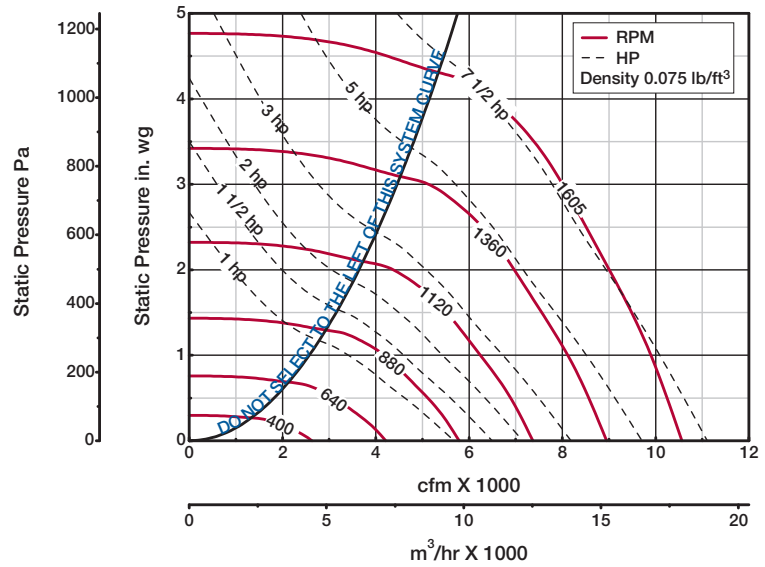
Unit weight** = 415 (188)

Housing thickness = 18 ga

Dimensions shown in inches (millimeters) and weight is shown in pounds (kilograms).

*Motor cover is optional. Size may be greater depending on motor.

**Weight shown is largest cataloged Open Drip Proof motor.



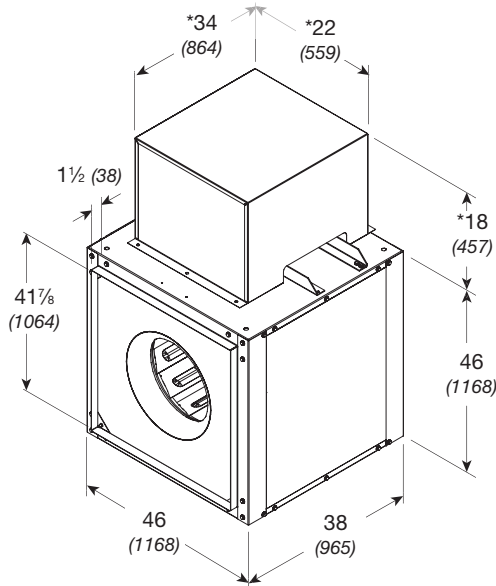
Model Number	Motor HP	Fan RPM	CFM / Static Pressure in Inches wg																				
			0.5	0.75	1	1.25	1.5	2	2.5	3	3.5	4											
BSQ-240HP-10	1	780	CFM	4321	3791	2789																	
			BHP	0.88	0.9	0.83																	
			Sones	14.4	14.0	13.5																	
		820	CFM	4643	4149	3492																	
			BHP	1.01	1.04	1.03																	
			Sones	15.2	14.8	14.3																	
BSQ-240HP-15	1 1/2	939	CFM	5552	5159	4721	4161																
			BHP	1.48	1.54	1.57	1.55																
			Sones	18.1	17.3	16.8	16.3																
BSQ-240HP-20	2	986	CFM	5903	5541	5135	4693	4013															
			BHP	1.69	1.76	1.81	1.82	1.76															
			Sones	19.2	18.2	17.9	17.5	17.0															
		1033	CFM	6251	5909	5533	5128	4609															
			BHP	1.93	2.01	2.07	2.09	2.07															
			Sones	20	19.3	18.9	18.6	18.2															
BSQ-240HP-30	3	1183	CFM	7336	7046	6747	6419	6073	5209														
			BHP	2.85	2.94	3.02	3.09	3.13	3.1														
			Sones	25	24	22	22	22	21														
BSQ-240HP-50	5	1256	CFM	7843	7589	7307	7016	6700	6030	4920													
			BHP	3.37	3.48	3.57	3.65	3.72	3.77	3.59													
			Sones	27	26	25	24	23	22	22													
		1329	CFM	8346	8125	7859	7593	7304	6686	5897													
			BHP	3.96	4.09	4.18	4.28	4.35	4.44	4.4													
			Sones	30	28	27	26	25	24	23													
BSQ-240HP-75	7 1/2	1402	CFM	8848	8657	8405	8152	7897	7327	6721	5790												
			BHP	4.61	4.76	4.86	4.96	5.06	5.2	5.24	5.09												
			Sones	33	31	30	29	27	25	25	24												
		1470	CFM	9313	9132	8908	8667	8427	7901	7334	6622	5565											
			BHP	5.28	5.44	5.57	5.67	5.77	5.94	6.02	5.97	5.7											
			Sones	36	34	32	32	31	27	26	25	24											
1605	CFM	10232	10066	9896	9675	9455	9007	8512	7987	7348	6474												
	BHP	6.8	6.98	7.16	7.27	7.38	7.6	7.78	7.84	7.8	7.57												
	Sones	43	42	39	38	38	34	30	29	28	27												

MAX Bhp AT A GIVEN RPM = (rpm/807)³
 MAXIMUM RPM = 1605
 TIP SPEED (ft/min) = rpm x 6.414
 MAX NEMA MOTOR FRAME SIZE = 215T
 OUTLET VELOCITY (ft/min) = 0.1192 x cfm

Performance certified is for installation type B: Free inlet, Ducted outlet. Performance ratings do not include the effects of appurtenances (accessories). Power rating (Bhp) does not include transmission losses.

The sound ratings shown are loudness values in fan sones at 1.5 m (5 feet) in a hemispherical free field calculated per AMCA Standard 301. Values shown are for installation type B: free inlet hemispherical fan sone levels.

BSQ 300 - Belt Drive



Damper size = 42 x 42 (1067 x 1067)

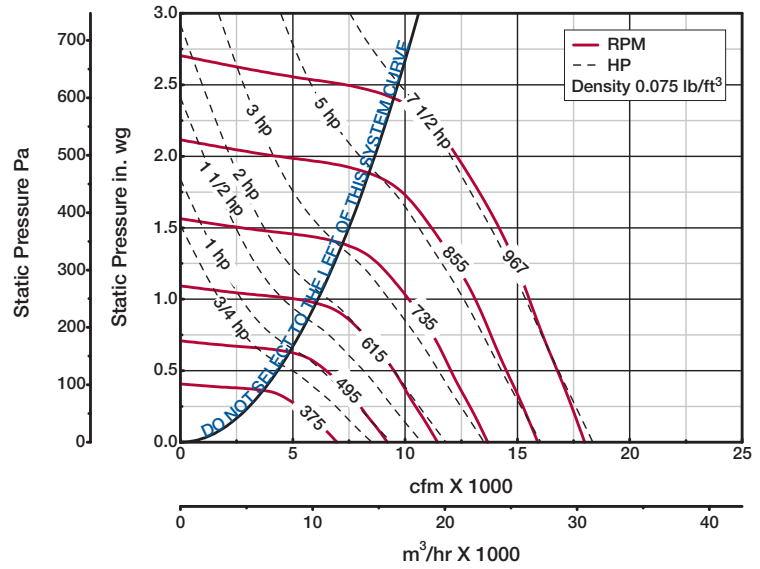
Unit weight** = 537 (244)

Housing thickness = 16 ga

Dimensions shown in inches (millimeters) and weight is shown in pounds (kilograms).

*Motor cover is optional. Size may be greater depending on motor.

**Weight shown is largest cataloged Open Drip Proof motor.



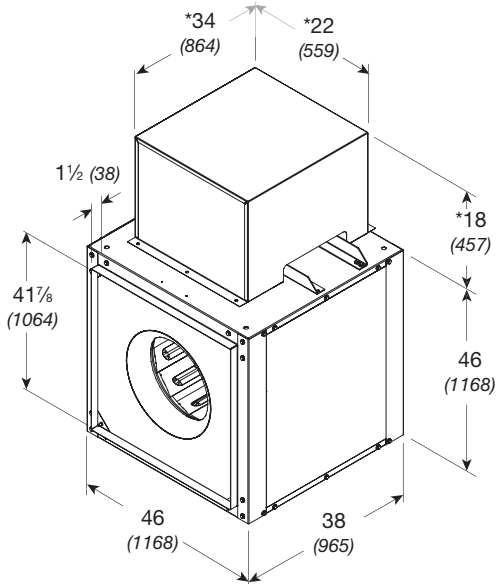
Model Number	Motor HP	Fan RPM	CFM / Static Pressure in Inches wg														
			0.125	0.25	0.5	0.75	1	1.25	1.5	1.75	2	2.25					
BSQ-300-7	3/4	410	CFM	6897	6141												
			BHP	0.57	0.6												
			Sones	10.4	10.3												
BSQ-300-10	1	494	CFM	7693	7033	4827											
			BHP	0.75	0.78	0.73											
			Sones	12.2	11.6	10.5											
BSQ-300-15	1 1/2	566	CFM	8598	7982	6450											
			BHP	0.99	1.02	1.04											
			Sones	14.7	13.8	12.0											
BSQ-300-20	2	623	CFM	10022	9469	8363	6662										
			BHP	1.48	1.51	1.57	1.52										
			Sones	17.2	16.6	15.1	13.5										
BSQ-300-30	3	668	CFM	11129	10636	9676	8418										
			BHP	1.96	2	2.08	2.09										
			Sones	19.3	19.0	17.7	16.3										
BSQ-300-30	3	713	CFM	11997	11546	10647	9617	8157									
			BHP	2.4	2.46	2.54	2.59	2.52									
			Sones	21	21	19.8	18.5	17.2									
BSQ-300-50	5	757	CFM	12862	12446	11588	10703	9547	7803								
			BHP	2.91	2.97	3.06	3.13	3.13	2.95								
			Sones	23	23	22	21	19.8	18.5								
BSQ-300-50	5	845	CFM	13704	13321	12496	11714	10727	9442								
			BHP	3.47	3.55	3.64	3.73	3.76	3.68								
			Sones	25	25	24	23	22	21								
BSQ-300-50	5	845	CFM	15380	15041	14307	13604	12860	11957	10839	9309						
			BHP	4.8	4.9	5.01	5.12	5.2	5.23	5.16	4.93						
			Sones	27	27	28	27	26	25	24	23						
BSQ-300-75	7 1/2	906	CFM	16538	16221	15548	14870	14237	13481	12576	11497	10099					
			BHP	5.91	6	6.14	6.25	6.37	6.44	6.44	6.34	6.1					
			Sones	30	30	31	30	29	29	27	26	26					
BSQ-300-75	7 1/2	967	CFM	17693	17396	16776	16124	15526	14888	14171	13273	12242	11047				
			BHP	7.17	7.27	7.44	7.55	7.67	7.78	7.85	7.82	7.71	7.5				
			Sones	33	33	34	34	33	33	32	30	29	28				

MAX Bhp AT A GIVEN RPM = (rpm/486)³
 MAXIMUM RPM = 967
 TIP SPEED (ft/min) = rpm x 7.984
 MAX NEMA MOTOR FRAME SIZE = 215T
 OUTLET VELOCITY (ft/min) = 0.0826 x cfm

Performance certified is for installation type B: Free inlet, Ducted outlet. Performance ratings do not include the effects of appurtenances (accessories). Power rating (Bhp) does not include transmission losses.

The sound ratings shown are loudness values in fan sones at 1.5 m (5 feet) in a hemispherical free field calculated per AMCA Standard 301. Values shown are for installation type B: free inlet hemispherical fan sone levels.

BSQ 300HP - Belt Drive



Damper size = 42 x 42 (1067 x 1067)

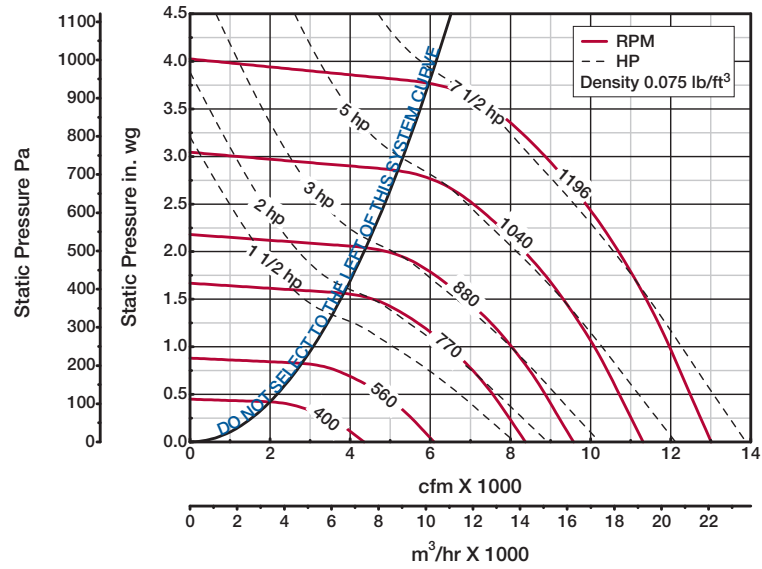
Unit weight** = 537 (244)

Housing thickness = 16 ga

Dimensions shown in inches (millimeters) and weight is shown in pounds (kilograms).

*Motor cover is optional. Size may be greater depending on motor.

**Weight shown is largest cataloged Open Drip Proof motor.



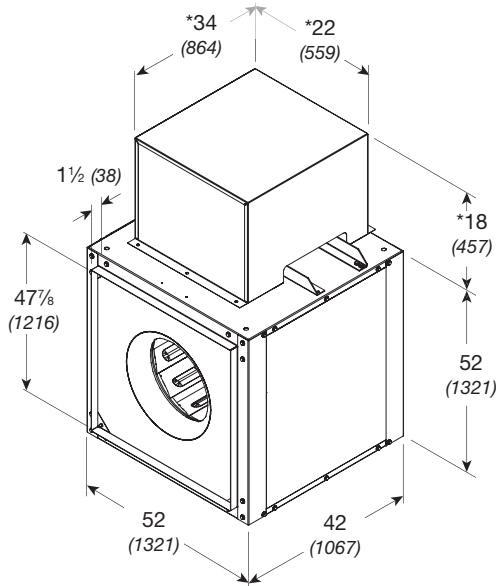
Model Number	Motor HP	Fan RPM	CFM / Static Pressure in Inches wg																				
			0.5	0.75	1	1.25	1.5	1.75	2	2.5	3	3.5											
BSQ-300HP-15	1 1/2	620	CFM	5642	4823																		
			BHP	1.06	1.1																		
			Sones	14.4	14.0																		
		694	CFM	6610	6001	5168	3452																
			BHP	1.44	1.51	1.53	1.36																
			Sones	16.5	16.1	15.8	16.3																
BSQ-300HP-20	2	725	CFM	6998	6436	5729	4747																
			BHP	1.63	1.71	1.75	1.71																
			Sones	17.5	17.2	16.8	16.6																
		777	CFM	7641	7151	6556	5799	4740															
			BHP	1.98	2.07	2.13	2.15	2.07															
			Sones	19.3	19.1	18.5	18.4	18.2															
BSQ-300HP-30	3	829	CFM	8265	7830	7317	6701	5940	4535														
			BHP	2.36	2.47	2.56	2.61	2.61	2.4														
			Sones	21	21	21	20	20	20														
		934	CFM	9492	9142	8746	8281	7752	7130	6393													
			BHP	3.29	3.44	3.56	3.65	3.72	3.74	3.71													
			Sones	26	26	26	25	25	25	24													
BSQ-300HP-50	5	987	CFM	10105	9788	9417	9012	8564	8027	7411	5200												
			BHP	3.85	4.02	4.14	4.25	4.34	4.4	4.41	3.99												
			Sones	27	27	27	26	26	25	25	25												
		1039	CFM	10702	10401	10067	9711	9292	8847	8323	7028												
			BHP	4.45	4.63	4.78	4.9	5	5.09	5.14	5.09												
			Sones	28	27	27	27	26	26	26	25												
1091	CFM	11297	11010	10710	10371	10006	9601	9149	8055	6257													
	BHP	5.11	5.3	5.48	5.61	5.73	5.83	5.91	5.95	5.57													
	Sones	29	28	28	28	27	27	26	26	26													
BSQ-300HP-75	7 1/2	1144	CFM	11900	11626	11353	11036	10713	10336	9950	9020	7832											
			BHP	5.86	6.05	6.25	6.4	6.54	6.65	6.76	6.88	6.82											
			Sones	29	29	29	29	29	28	27	27	26											
		1196	CFM	12489	12228	11966	11681	11372	11047	10677	9853	8840	7545										
			BHP	6.65	6.86	7.06	7.24	7.39	7.53	7.64	7.81	7.85	7.63										
			Sones	30	30	30	30	30	29	28	28	28	27										

MAX Bhp AT A GIVEN RPM = (rpm/602)³
 MAXIMUM RPM = 1196
 TIP SPEED (ft/min) = rpm x 7.984
 MAX NEMA MOTOR FRAME SIZE = 215T
 OUTLET VELOCITY (ft/min) = 0.0826 x cfm

Performance certified is for installation type B: Free inlet, Ducted outlet. Performance ratings do not include the effects of appurtenances (accessories). Power rating (Bhp) does not include transmission losses.

The sound ratings shown are loudness values in fan sones at 1.5 m (5 feet) in a hemispherical free field calculated per AMCA Standard 301. Values shown are for installation type B: free inlet hemispherical fan sone levels.

BSQ 360 - Belt Drive



Damper size = 48 x 48 (1219 x 1219)

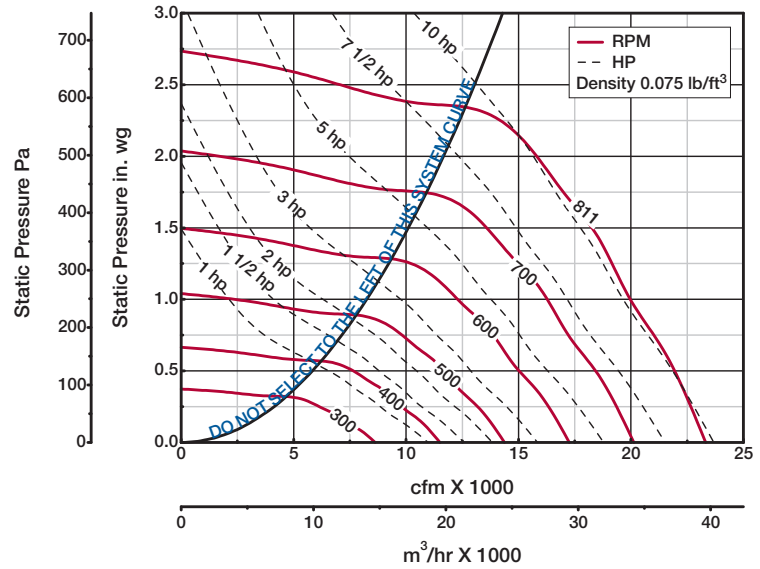
Unit weight** = 686 (311)

Housing thickness = 16 ga

Dimensions shown in inches (millimeters) and weight is shown in pounds (kilograms).

*Motor cover is optional. Size may be greater depending on motor.

**Weight shown is largest cataloged Open Drip Proof motor.



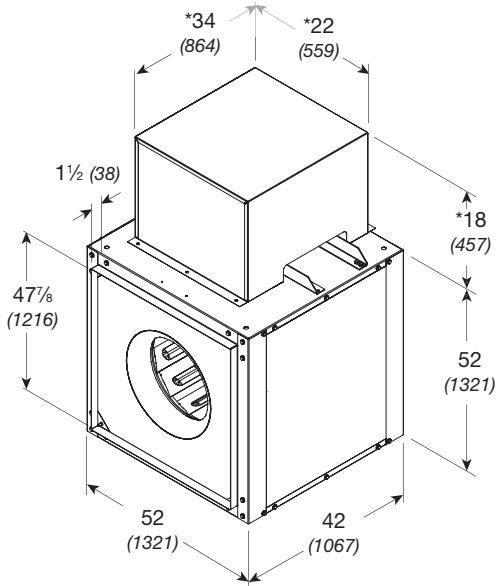
Model Number	Motor HP	Fan RPM	CFM / Static Pressure in Inches wg														
			0.125	0.25	0.5	0.75	1	1.25	1.5	1.75	2	2.25					
BSQ-360-10	1	320	CFM	8205	6979												
			BHP	0.63	0.64												
			Sones	10.8	10.5												
		376	CFM	10039	9008												
			BHP	1.01	1.04												
			Sones	12.6	12.5												
BSQ-360-15	1 1/2	404	CFM	10898	9941	7828											
			BHP	1.25	1.28	1.25											
			Sones	13.6	13.6	12.2											
		431	CFM	11720	10872	8980											
			BHP	1.51	1.55	1.55											
			Sones	14.7	14.7	13.7											
BSQ-360-20	2	474	CFM	13018	12323	10736	8489										
			BHP	1.99	2.05	2.09	1.96										
			Sones	16.1	16.6	15.7	14.1										
BSQ-360-30	3	543	CFM	15081	14544	13112	11627	9553									
			BHP	2.96	3.05	3.12	3.12	2.93									
			Sones	19.1	19.6	19.4	18.1	16.6									
BSQ-360-50	5	643	CFM	18041	17587	16511	15327	14081	12560								
			BHP	4.87	4.98	5.13	5.19	5.19	5.05								
			Sones	28	27	27	26	25	23								
BSQ-360-75	7 1/2	690	CFM	19423	19001	18083	16881	15926	14555	13120							
			BHP	6	6.12	6.31	6.38	6.45	6.38	6.2							
			Sones	29	29	29	28	28	27	25							
		737	CFM	20802	20407	19615	18505	17515	16475	15153	13704						
			BHP	7.3	7.42	7.66	7.75	7.82	7.84	7.72	7.49						
			Sones	31	31	32	32	31	30	29	28						
BSQ-360-100	10	774	CFM	21885	21509	20755	19765	18744	17893	16693	15429	13860					
			BHP	8.44	8.57	8.82	8.95	9.03	9.11	9.03	8.86	8.55					
			Sones	32	32	33	34	33	33	32	30	30					
		811	CFM	22967	22607	21888	21011	19986	19146	18195	16996	15786	14128				
			BHP	9.69	9.83	10.1	10.27	10.35	10.44	10.45	10.34	10.13	9.73				
			Sones	33	34	35	37	36	35	34	33	32	32				

MAX Bhp AT A GIVEN RPM = (rpm/370)³
 MAXIMUM RPM = 811
 TIP SPEED (ft/min) = rpm x 9.424
 MAX NEMA MOTOR FRAME SIZE = 215T
 OUTLET VELOCITY (ft/min) = 0.0632 x cfm

Performance certified is for installation type B: Free inlet, Ducted outlet. Performance ratings do not include the effects of appurtenances (accessories). Power rating (Bhp) does not include transmission losses.

The sound ratings shown are loudness values in fan sones at 1.5 m (5 feet) in a hemispherical free field calculated per AMCA Standard 301. Values shown are for installation type B: free inlet hemispherical fan sone levels.

BSQ 360HP - Belt Drive



Damper size = 48 x 48 (1219 x 1219)

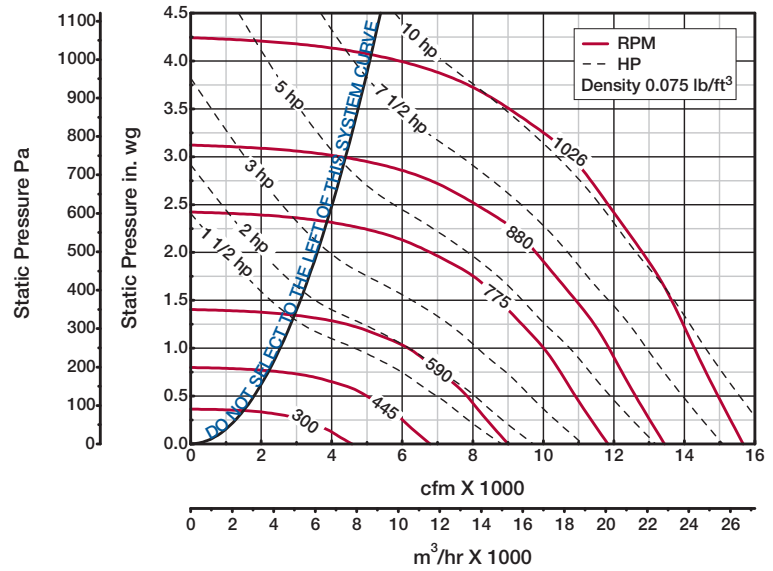
Unit weight** = 686 (311)

Housing thickness = 16 ga

Dimensions shown in inches (millimeters) and weight is shown in pounds (kilograms).

*Motor cover is optional. Size may be greater depending on motor.

**Weight shown is largest cataloged Open Drip Proof motor.



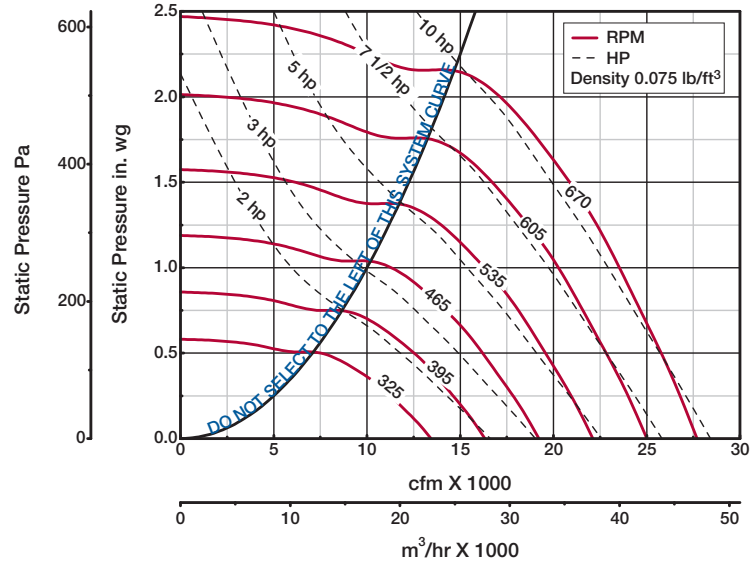
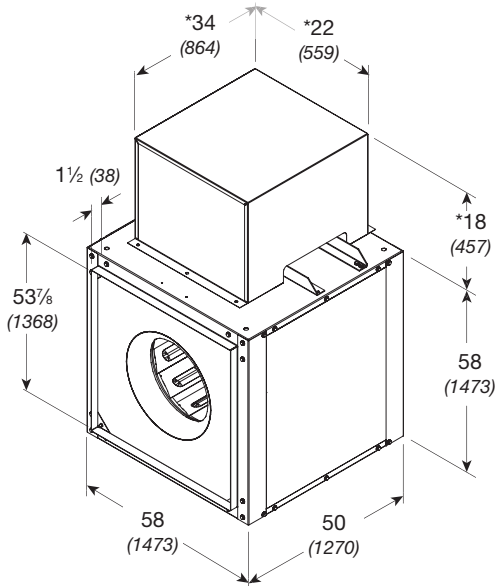
Model Number	Motor HP	Fan RPM	CFM / Static Pressure in Inches wg																				
			0.5	0.75	1	1.25	1.5	2	2.5	3	3.5	4											
BSQ-360HP-15	1 1/2	490	CFM	5939	4709																		
			BHP	1.12	1.12																		
			Sones	16.1	15.8																		
		545	CFM	7012	6115	4672																	
			BHP	1.51	1.55	1.51																	
			Sones	17.6	16.9	16.9																	
BSQ-360HP-20	2	600	CFM	8000	7272	6410	4868																
			BHP	1.97	2.06	2.09	1.99																
			Sones	18.4	17.6	17.3	17.4																
BSQ-360HP-30	3	644	CFM	8745	8143	7381	6424	4630															
			BHP	2.4	2.52	2.55	2.57	2.37															
			Sones	19.0	18.3	17.7	17.7	18.1															
		687	CFM	9463	8955	8277	7528	6453															
			BHP	2.87	3.01	3.09	3.12	3.08															
			Sones	19.5	19.0	18.4	18.2	18.2															
BSQ-360HP-50	5	730	CFM	10177	9716	9142	8465	7741	4517														
			BHP	3.41	3.56	3.68	3.71	3.77	3.28														
			Sones	20	19.7	19.2	18.6	18.6	20														
		815	CFM	11576	11150	10740	10198	9593	8138	4978													
			BHP	4.63	4.83	4.99	5.13	5.16	5.2	4.55													
			Sones	21	21	21	20	20	19.9	22													
BSQ-360HP-75	7 1/2	874	CFM	12535	12131	11747	11319	10801	9633	7849													
			BHP	5.64	5.88	6.05	6.22	6.35	6.42	6.29													
			Sones	24	23	23	22	22	22	22													
		933	CFM	13487	13108	12740	12382	11939	10909	9748	7674												
			BHP	6.8	7.04	7.26	7.45	7.61	7.75	7.86	7.52												
			Sones	27	27	25	25	25	24	24	25												
BSQ-360HP-100	10	980	CFM	14241	13880	13523	13182	12822	11879	10833	9417	6847											
			BHP	7.83	8.08	8.33	8.53	8.72	8.96	9.05	8.99	8.27											
			Sones	30	30	28	27	27	27	26	27	28											
		1026	CFM	14975	14631	14286	13957	13631	12806	11838	10796	8982	5679										
			BHP	8.93	9.2	9.47	9.69	9.89	10.25	10.31	10.46	10.12	8.6										
			Sones	33	34	32	30	29	30	29	29	30	32										

MAX Bhp AT A GIVEN RPM = (rpm/469)³
 MAXIMUM RPM = 1026
 TIP SPEED (ft/min) = rpm x 9.424
 MAX NEMA MOTOR FRAME SIZE = 215T
 OUTLET VELOCITY (ft/min) = 0.0632 x cfm

Performance certified is for installation type B: Free inlet, Ducted outlet. Performance ratings do not include the effects of appurtenances (accessories). Power rating (Bhp) does not include transmission losses.

The sound ratings shown are loudness values in fan sones at 1.5 m (5 feet) in a hemispherical free field calculated per AMCA Standard 301. Values shown are for installation type B: free inlet hemispherical fan sone levels.

BSQ 420 - Belt Drive



Damper size = 54 x 54 (1372 x 1372)
 Unit weight** = 789 (358)
 Housing thickness = 14 ga
 Dimensions shown in inches (millimeters) and weight is shown in pounds (kilograms).
 *Motor cover is optional. Size may be greater depending on motor.
 **Weight shown is largest cataloged Open Drip Proof motor.

Model Number	Motor HP	Fan RPM	CFM / Static Pressure in Inches wg																
			0.125	0.25	0.375	0.5	0.75	1	1.25	1.5	1.75	2							
BSQ-420-20	2	270	CFM	9901	8281														
			BHP	0.68	0.7														
			Sones	6.0	3.3														
		349	CFM	13501	12428	11210	9592												
			BHP	1.41	1.48	1.51	1.49												
			Sones	9.4	8.7	8.1	7.8												
		389	CFM	15275	14340	13334	12132												
			BHP	1.93	2.02	2.08	2.09												
			Sones	13.2	12.3	11.5	10.8												
BSQ-420-30	3	417	CFM	16500	15633	14714	13745	11026											
			BHP	2.37	2.46	2.53	2.58	2.52											
			Sones	16.6	15.7	14.8	13.9	12.5											
		445	CFM	17704	16910	16068	15188	12941											
			BHP	2.86	2.96	3.05	3.11	3.12											
			Sones	20	19.5	18.6	17.7	15.9											
BSQ-420-50	5	487	CFM	19500	18801	18054	17257	15475	13113										
			BHP	3.71	3.84	3.95	4.02	4.11	4.03										
			Sones	22	21	21	19.8	18.2	16.9										
		528	CFM	21244	20625	19937	19231	17747	15850	13154									
			BHP	4.7	4.85	4.97	5.08	5.22	5.24	4.99									
			Sones	25	24	23	23	21	20	18.7									
BSQ-420-75	7 1/2	566	CFM	22854	22301	21659	21017	19644	18080	16134	13026								
			BHP	5.76	5.94	6.07	6.19	6.36	6.46	6.39	5.95								
			Sones	28	27	26	25	24	24	22	21								
		604	CFM	24459	23950	23363	22762	21502	20206	18533	16581								
			BHP	6.98	7.17	7.32	7.45	7.66	7.83	7.84	7.71								
			Sones	31	30	30	29	28	27	26	25								
BSQ-420-100	10	635	CFM	25765	25281	24743	24171	22996	21762	20341	18681	16692							
			BHP	8.09	8.29	8.46	8.6	8.85	9.03	9.12	9.09	8.88							
			Sones	35	33	33	32	31	30	30	29	28							
		670	CFM	27237	26778	26291	25749	24660	23491	22322	20793	19111	16873						
			BHP	9.47	9.69	9.88	10.03	10.33	10.52	10.71	10.7	10.61	10.24						
			Sones	39	37	36	36	34	34	34	33	32	31						

Performance certified is for installation type B: Free inlet, Ducted outlet. Performance ratings do not include the effects of appurtenances (accessories). Power rating (Bhp) does not include transmission losses.

The sound ratings shown are loudness values in fan sones at 1.5 m (5 feet) in a hemispherical free field calculated per AMCA Standard 301. Values shown are for installation type B: free inlet hemispherical fan sone levels.

Direct Drive Specifications

Duct mounted supply, exhaust, or return fans shall be of the centrifugal, direct driven, inline type. The fan housing shall be of the square design constructed of heavy gauge galvanized steel or aluminum and shall include square duct mounting collars.

Fan construction shall include two removable access panels located perpendicular to the motor mounting panel. The access panels must be of sufficient size to permit easy access to all interior components.

The fan wheel shall be centrifugal, backward inclined, constructed of aluminum, and shall include a wheel cone carefully matched to the inlet cone for precise running tolerances. Wheels shall be statically and dynamically balanced.

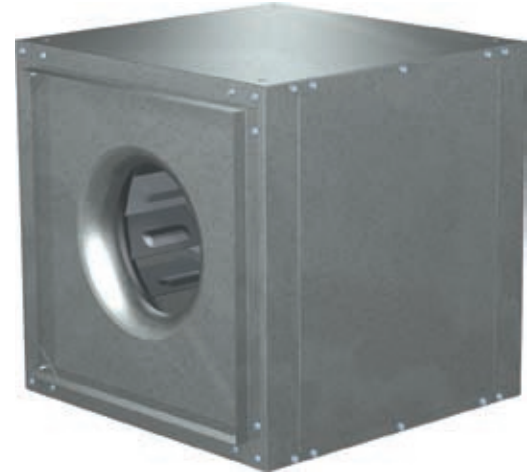
Motors shall be permanently lubricated and carefully matched to the fan loads. Motors shall be readily accessible for maintenance.

A NEMA-1 disconnect switch shall be provided as standard, except with explosion resistant motors, where disconnects are optional. Factory wiring shall be provided from motor to the handy box.

All fans shall bear the AMCA Certified Ratings Seal for both sound and air performance.

Each fan shall bear a permanently affixed manufacturer's nameplate containing the model number and individual serial number for future identification.

Fans shall be model SQ as manufactured by Greenheck Fan Corporation of Schofield, Wisconsin, USA.



Belt Drive Specifications

Duct mounted supply, exhaust, or return fans shall be of the centrifugal, belt driven, inline type. The fan housing shall be of the square design constructed of heavy gauge galvanized steel or aluminum and shall include square duct mounting collars.

Fan construction shall include two removable access panels located perpendicular to the motor mounting panel. The access panels must be of sufficient size to permit easy access to all interior components.

The fan wheel shall be centrifugal backward inclined, constructed of aluminum, and shall include a wheel cone carefully matched to the inlet cone for precise running tolerances. Wheels shall be statically and dynamically balanced.

Motors shall be heavy-duty ball bearing type carefully matched to the fan load and furnished at the specified voltage, phase, and enclosure. Motors and drives shall be mounted out of the airstream. Motors shall be readily accessible for maintenance.

Precision ground and polished fan shafts shall be mounted in permanently sealed, lubricated pillow block ball bearings. Bearings shall be selected for a minimum L_{10} life in excess of 100,000 hours (L_{50} average life in excess of 500,000 hours) at maximum cataloged operating speed.

Drives shall be sized for a minimum of 150 percent of driven horsepower.

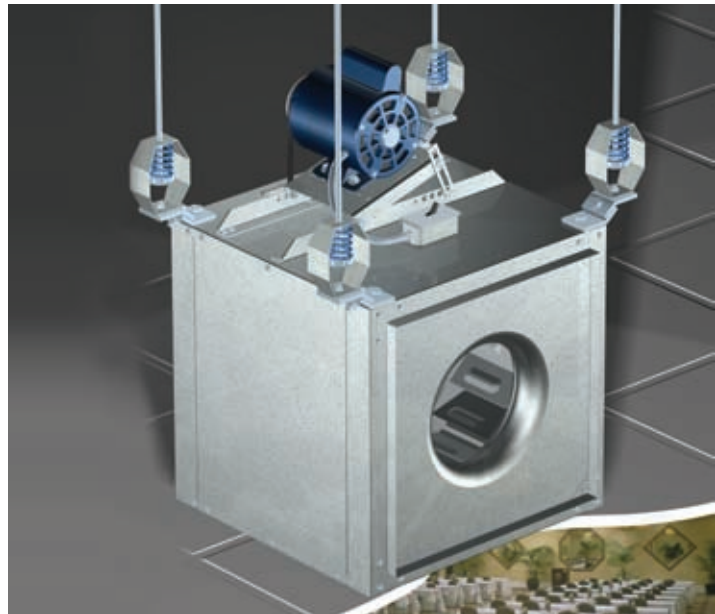
Pulleys shall be of the fully machined cast iron type, keyed, and securely attached to the wheel and motor shafts.

Motor pulleys shall be adjustable for final system balancing. A NEMA-1 disconnect switch shall be provided as standard, except with explosion resistant motors, where disconnects are optional. Factory wiring shall be provided from motor to the handy box.

All fans shall bear the AMCA Certified Ratings Seal for both sound and air performance.

Each fan shall bear a permanently affixed manufacturer's nameplate containing the model number and individual serial number for future identification.

Fans shall be model BSQ as manufactured by Greenheck Fan Corporation of Schofield, Wisconsin, USA.



Centrifugal Inline Guide



Model CSP centrifugal forward curved direct driven cabinet fans are for clean air applications where low sound levels are desired. Capacities range from 70 to 3,800 cfm (120 to 6,500 m³/hr) and up to 1 in. wg (250 Pa) of static pressure.



Model BCF centrifugal forward curved belt drive fans are for use in supply, exhaust, or return air applications. Designed in a low profile cabinet with heights ranging from 11 to 23 in. (279 to 584 mm). Capacities range from 170 to 3,330 cfm (290 to 56,00 m³/hr) for single fan models and 600 to 5,800 cfm (1020 to 9,900 m³/hr) for double fan models with up to 1.5 in. wg (370 Pa) of static pressure.



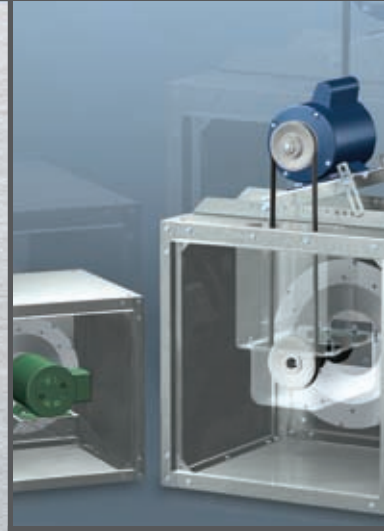
Model BDF centrifugal forward curved belt drive duct fans are designed for use in supply, exhaust, or return air applications. Capacities range from 300 to 15,000 cfm (510 to 25,500 m³/hr) with up to 3 in. wg (740 Pa) of static pressure.



Model SQ and BSQ centrifugal backward inclined belt or direct drive fans are designed for clean air applications (intake, exhaust, return, or make-up air systems) where space is a prime consideration. Capacities range from 30 to 27,000 cfm (50 to 45,900 m³/hr) and up to 4 in. wg (990 Pa) of static pressure. Maximum operating temperature is 180°F (82°C).



Model TCB centrifugal backward inclined belt drive fans for higher pressures. Capacities range from 360 to 24,000 cfm (600 to 40,800 m³/hr) and up to 4.5 in. wg (1118 Pa) of static pressure. Maximum operating temperature is 200°F (93°C).



Building Value in Air

Greenheck delivers value to mechanical engineers by helping them solve virtually any air quality challenges their clients face with a comprehensive selection of

top quality, innovative air-related equipment. We offer extra value to contractors by providing easy-to-install, competitively priced, reliable products that arrive on time.

And building owners and occupants value the energy efficiency, low maintenance and quiet dependable operation they experience long after the construction project ends.

Our Warranty

Greenheck warrants this equipment to be free from defects in material and workmanship for a period of one year from the purchase date. Any units or parts which prove defective during the warranty period will be replaced at our option when returned to our factory, transportation prepaid. Motors are warranted by the motor manufacturer for a period of one year. Should motors furnished by Greenheck prove defective during this period, they should be returned to the nearest authorized motor service station. Greenheck will not be responsible for any removal or installation costs.

As a result of our commitment to continuous improvement, Greenheck reserves the right to change specifications without notice.



Prepared to Support Green Building Efforts

