

Copyright

- Copyright © 2008 Group Sense Mobile-Tech Limited. All rights reserved.
- Product specifications and features are for reference only and are subject to change without prior notice.

Declaration

- This Quick Start Guide is published by Group Sense Mobile-Tech Limited without any warranty. Improvement and changes to this Quick Start Guide necessitated by typographical errors, inaccuracies of current information, or improvements to programs and/or equipment, may be made by Group Sense Mobile-Tech Limited any time and without notice. Such changes will, however, be incorporated into new editions of this Quick Start Guide.

FCC Statement

This device complies with Part 15 of the FCC Rules. Operation is subject to the following two conditions: (1) this device may not cause harmful interference, and (2) this device must accept any interference received, including interference that may cause undesired operation. Changes or modifications not expressly approved by the party responsible for compliance could void the user's authority to operate the equipment.

FCC Radiation Exposure Statement

The antennas used for this transmitter must be installed to provide a separation distance of at least 20 cm from all persons and must not be co-located or operating in conjunction with any other antenna or transmitter.

Important safety information

PLEASE READ THIS CAREFULLY BEFORE USING WF35!

- Always treat your product with care and keep it in a clean and dust-free place.
- Do not expose WF35 to moisture or humidity.
- Do not expose WF35 to extreme high or low temperatures.
- Do not attempt to disassemble your product.
- Use only the chargers and batteries approved by Group Sense Mobile-Tech Limited. The use of any other type may invalidate any approval and warranty. No reverse charging with other chargers, they may have inverse polarity.
- Never use the charger if the plug is damaged.
- Never touch the charger if your hands/feet are wet.
- Do not expose the charger to water, it may cause electrical fires.
- Do not repair the charger yourself for your safety.

- To reduce the risk of fire or burns, do not disassemble, crush or puncture the battery.
- Recycle or dispose of the battery safely and properly according to local laws and regulations.
- Do not dispose of the battery in fire or water.
- Do not let the metal contacts on the battery touch other metal object, it could lead to short-circuit and damage the battery.
- For WF35 model, only approved batteries, chargers that are designed for the model can be used with WF35 unit.
- Do not exchange with wrong model battery, it may occurs to explosion. Please dispose battery following instruction.

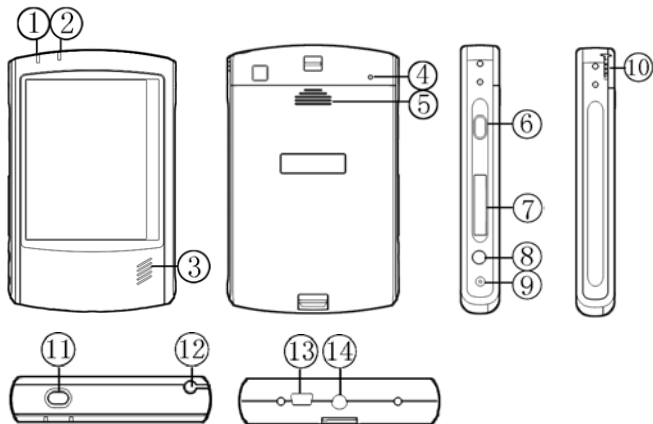
Contents

Getting to know WF35	7
WF35 overview	7
Battery	9
Installing/removing battery	9
Charging battery	11
Getting started	15
Turn on/off WF35	15
Wi-Fi connection settings	16
Using Bluetooth	21
To enable Bluetooth	21
Bluetooth settings	23
Paired Bluetooth	25
Searching for Bluetooth	28
Bluetooth services	29
Transferring files via Bluetooth	30

WF35 settings	32
Screen rotation	32
Backlight settings	33
Power properties	34
MSR settings	35
Date/Time settings	36
Dialing settings	37
Input methods	38
Network and dial-up connection	44
Storage manager settings	47
System backup	49

Getting to know WF35

WF35 overview



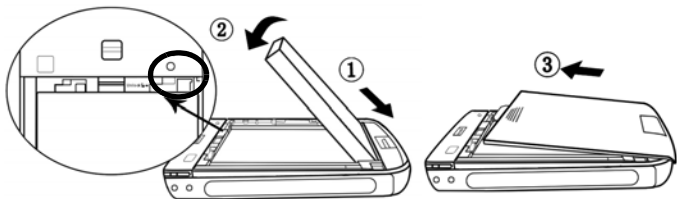
	Name	Description
1	LED light	Show the status for Wi-Fi and battery
2	LED light	Programmable LED
3	Speaker	
4	Reset hole	Reset device
5	Battery cover	
6	Shortcut	
7	SD card slot	Insert external card
8	Earphone jack	
9	Charging slot	Connect the adapter to charge battery
10/12	Stylus	
11	Power key	Press to turn on WF35; press and hold to turn off; if WF35 is on, press to suspend
13	USB socket	Connect to PC for data synchronization
14	Mount slot	Mount your device on other fixed place

Battery

Installing/removing battery

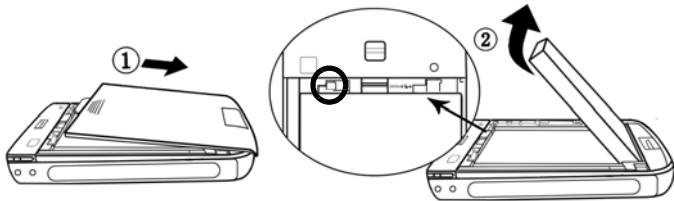
To install battery

1. Align the metal contacts on the battery with the contacts inside the battery compartment.
2. Press the battery downwards until it fits the battery compartment; push the battery lock leftwards.
3. Slide the battery cover upwards.



To remove battery

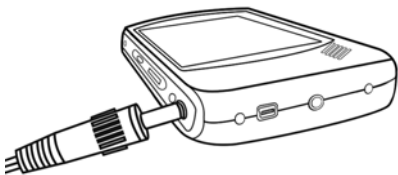
1. Press and hold the Power button to turn off WF35. (See “Turn on/off WF35“.)
2. Remove the battery cover by sliding it downwards.
3. Push the battery lock rightwards to unlock battery; gently lift the upper edge of the battery outwards and take it out.



Charging battery

To charge the battery

1. Connect your charger to the charging slot (as below).
2. Plug the charger to the main electrical outlet.
3. The LED light turns orange.
4. When charging is complete, the LED light turns green.













Note: Charge the unit when the LED is RED.




LED light description

There are two LED lights on the front of WF35, we will give the information for the left one here:

- Red flash - Battery low
- Red - Battery very low
- Orange flash - Battery charging
- Green - Battery full
- Blue flash quickly - Wi-Fi searching
- Blue flash slowly - Wi-Fi connected
- Off - Wi-Fi disconnected

Description for icons on task bar

Icon	Description
	ActiveSync
	MSR connected
	Swipe the card successfully
	Fail to swipe the card
	WLAN connected
	WLAN searching
	WLAN disconnected
	Battery indicator
	Battery charging
	Tap to switch application

Icon	Description
	Short tap to hide/show current Input method keyboard
	Tap and hold to select another Input method
	Start menu

Getting started

Turn on/off WF35

To turn on WF35

1. Press the Power button on the top of WF35.
2. The GREEN LED lights on for a second and the boot logo is shown. It will boot to the WinCE OS.


To turn off WF35

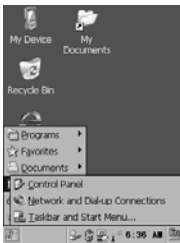
1. Press and hold the Power button on the top of WF35 for 2 seconds to turn it off.

To suspend WF35

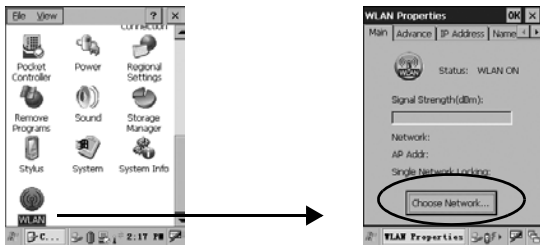
1. If WF35 has been turned on, press the Power button to suspend, so as to save power.

Wi-Fi connection settings

1. In WinCE desktop, tap  in system tray, select “Control Panel” in “Settings”.



2. Select “WLAN” in control panel. Then tap “Choose Network” button.




3. Select an available WLAN in the list or add a new connection. Tap “Connect & Lock”.



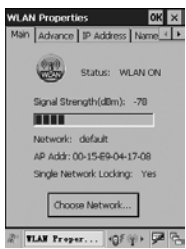
4. Input network password if needed. Tap input method icon on system tray to open soft keyboard. Tap “OK” to finish setting.



5. If connection succeeds, system will show on the status field of Wireless Information screen. Tap  to exit.



6. In WLAN setting main panel, you can perform Advance Setting, IP Setting, DNS and WINS Setting, and viewing IP info.





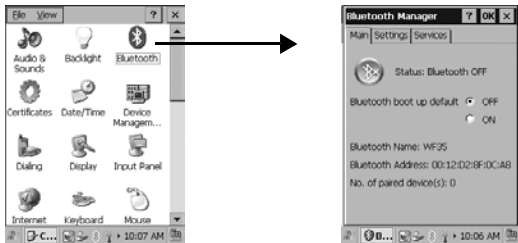
- 7. When WLAN connected, there is a taskbar icon and top left LED (blue) to indicate connection status.













Using Bluetooth

To enable Bluetooth

1. Double-click  in Control Panel or  on taskbar to open Bluetooth Manager page.



2. Tap  to enable Bluetooth, and Bluetooth icon  on taskbar will change accordingly.

Status	Main page	Taskbar
Bluetooth Off		
Bluetooth turning on (yellow)		
Bluetooth On (Blue)		
Connecting		
Receiving		

3. Select ON in “Bluetooth boot up default” option to enable Bluetooth automatically when turn on your device each time.

Bluetooth settings

Tap “Settings” tab in “Bluetooth Manager” page to set Bluetooth.



- **Allow Connection from:** you can select “All devices” to connect all Bluetooth devices; or you can select “Paired device only” to connect with paired Bluetooth only.

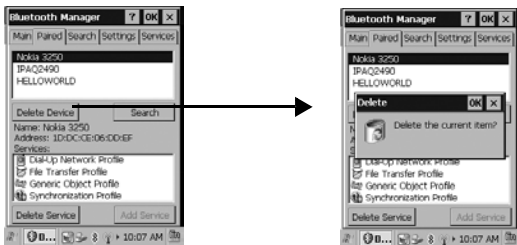
- **Searchable by nearby Bluetooth devices:** check this option, your device will be searchable by nearby Bluetooth devices.
- Check the option “Allow Bluetooth Settings in User mode“ and “Allow create/change of paired device in User mode“, all tabs (Main, Paired, Search, Settings, Services) in Bluetooth Manager will be shown;
if only check “Allow Bluetooth Settings in User mode”, Main, Settings and Service tabs will be shown;
if only check “Allow create/change of paired device in User mode“, Main, Paired and Search tabs will be shown.

Paired Bluetooth

Tap “Paired“ tab in Bluetooth Manager to open Paired page. If Bluetooth is disable, Paired tab will be hidden.

To delete a paired device

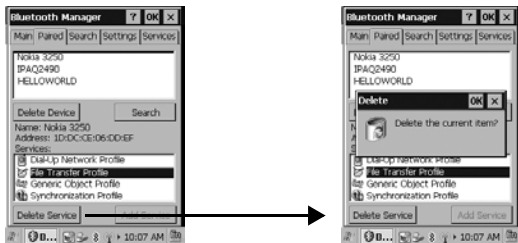
If you already have paired devices, select a paired device in paired Bluetooth list, and tap “Delete Device“.



To delete a service

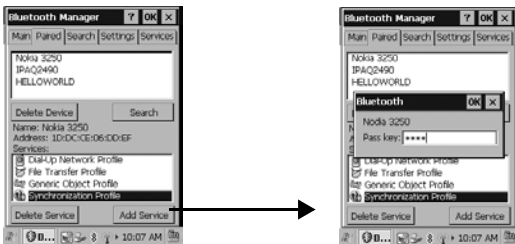
When select a device in the paired Bluetooth list, you can view the device's details, including the device name, address and the service supplied by the device. (the icon before the unpaired service will be gray)

Select a paired service, and tap "Delete Service".



To add a service

Select a unpaired service and tap “Add Service” to enter pass key to complete pairing operation.



Searching for Bluetooth

Tap “Search“ tab or “Search“ button in Paired page to open Search page, you can search other Bluetooth device here. If Bluetooth is disable, this tab will be hidden.

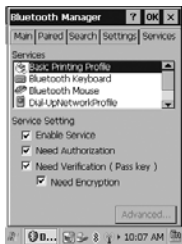
Select range of searching Bluetooth device from the pull down menu and tap “Search“.



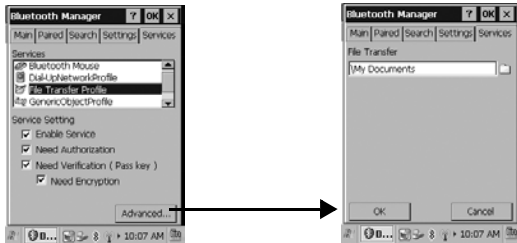
Available devices will be displayed in the service list. Select an unpaired service and tap “Add Service“ to add new service.

Bluetooth services


Tap “Services“ in Bluetooth Manager, all services that your device supports are listed in the Services list.

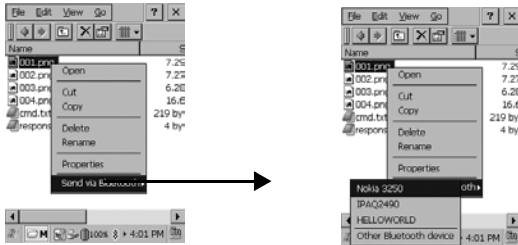


Select “File Transfer Profile“ service and tap “Advanced...” to change the file transfer saving path (the default path is \My Documents).



Transferring files via Bluetooth

1. In WinCE desktop, tap  in system tray, select “My Documents”.
2. Press and hold the file you want to send and select “Send via Bluetooth” from the pop-up menu.




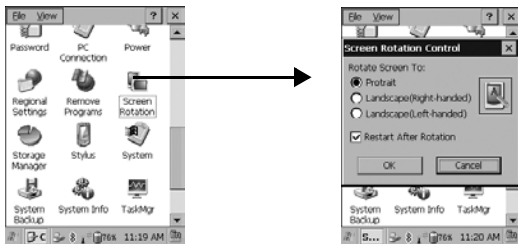
3. Select the paired Bluetooth you want to send the file to, a “Send File“ box will pop up to wait for confirmation from your partner.

WF35 settings


Screen rotation

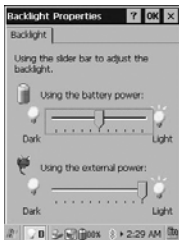
Two screen view mode are supported in WF35, you can change it as you like.

Double-click “Screen Rotation” icon  in “Control Panel”, select Portrait/Landscape (Right-handed)/Landscape (Left-handed)




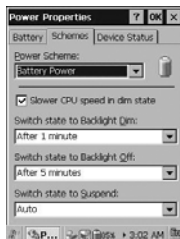
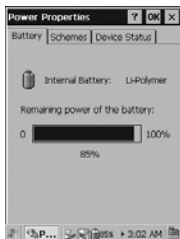
Backlight settings

In Control Panel, double-click Backlight icon  to open Backlight Properties page. Drag the scroll bar to adjust backlight.




Power properties

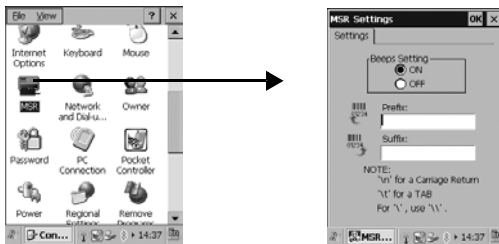
Double-click Power icon  in Control Panel to open Power Properties page. you can view the battery information, set scheme and view the device status.



MSR settings


When connect to the MSR, the icon  displays on taskbar.

1. Double-click  in “Control Panel” to access “MSR Settings”.



2. Select On/Off to set beeps on/off; input the prefix/suffix for the information displayed on screen when you swipe your card.

Date/Time settings

Double-Click Date/Time icon  in Control Panel to open Date/Time Properties page.



Tap the pull down arrow of Time zone to select the location where you are, and then set the date and time, tap “Apply” to finish setting.

Dialing settings

Double-Click Dialing icon  in Control Panel to set dialing properties.




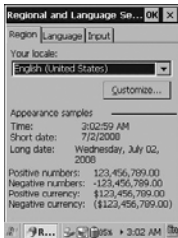
You can tap “Edit” to modify the dialing patterns if necessary.

Input methods

You have English and Simplified Chinese to use in WF35. Before using WF35, you can adjust input methods first.

Regional settings

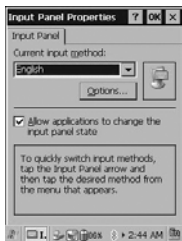
Double-click  to open Regional and Language Settings page. You can set your location, user interface language and input methods.



1. Tap the pull down arrow to select your location, and tap “Customize“ to set your location details.
2. Tap “Language” tab to set the language used for menus, dialogs and alerts.
3. Tap “Input“ tab to select the input method when you start your device.

Input panel settings

Double-click Input Panel icon  in Control Panel to change input methods.


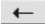






You can tap “Options...” to set details for your selected input methods, but if you are using English or PinYin, “Options” is invalid.

Handwriting

WF35 enables handwriting recognition in full screen or you can write in Graffiti area. We give English HW as an example.










-  Space
-  Delete a character before the cursor
-  Go to next line
-  Switch to Graffiti area
-  Switch to softkeyboard
-  Switch to number keyboard

Soft-keyboard

Besides handwriting input, you also can input with soft-keyboard. We give English keyboard as an example.



-  Space
-  Delete a character before a cursor
-  Go to next line
-  Switch to upper case letter
-  Switch to full screen input mode
-  Switch to number keyboard
-  Switch to




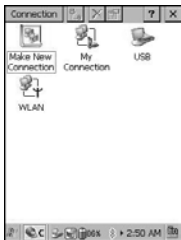
Hard keyboard

You will have an external hard keyboard to connect with your device, so you can input text via hard keyboard.




Network and dial-up connection

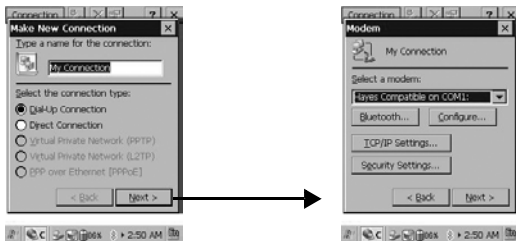
Double-click “Network and Dial-up Connection” icon  to open Connection page, you have three ways to set up connection: Make new connection, USB and WLAN.



To connect via making a new connection

1. Double-Click , enter a name for the connection and select the connect type.

2. Tap “Next“ to set details for your new connection.




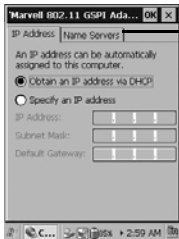
3. Tap “Next“ to continue.
4. Tap “Finish“ to complete settings.

To connect via USB


1. Connect device to PC via USB.
2. Double-click  to connect.

To connect via WLAN

Double-click  to set up connection.

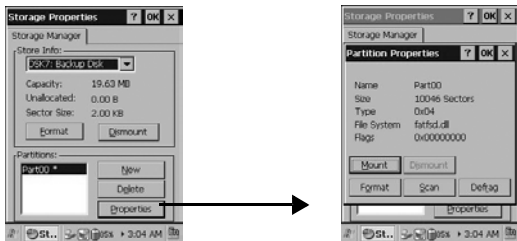


Storage manager settings

Double-click  to open Storage Properties.



1. Tap “Format“ to to erase all data on the storage device permanently.
2. Tap “New” to create a new partition.
3. Tap “Delete“ to delete all data on the partition permanently.
4. Tap “Properties“ to view the selected partition properties.

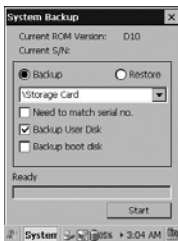


5. Tap “Format“ in Partition Properties to set format parameters, and then tap “Start“ to format.
6. Tap “Scan“ to start scanning all FATs on volume.
7. Tap “Defrag“ to start defragging.

System backup

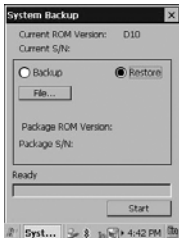
Please close all active applications/programs before proceeding to backup, it will ensure backup data the most up-to-date snapshot of the system.

Double-click  to open System Backup page.



1. Tap the pull down arrow to select backup type and corresponding options below, and then tap “Start”.

2. Select “Restore“, tap “File“ to select files you want to restore, tap “OK“ and tap “Start“ to start restore.



Note: Restore will overwrite all existing data in the system!