

AGES UP
14+

6-Axis Gyro Remote Control Series

X23-I/X23-IB X24-I/X24-IB

4 Channel RC Stunt Quad Copter

2.4GHZ



OPERATING MANUAL

MAIN CHARACTER

- Using specially-made plastic fuselage, good toughness, high shock resistance, stable flight, it suited to play on indoor or outdoor.
- Built-in 6-axis gyro stabilizer, to ensure precise localization in the air.
- Using modularity structure, easy to install and maintain.
- Disassembly structure, various functionality, it can rotate and aerial shots.

The material, specification, component packing inside of the manual are for your information. Our company is not be responsible for foreign body of the print. And we are not taking the initiative to inform consumers of any updates or changes.

1

Safety cautions

1 Important announcement

(1)The product is a sophisticated equipment integrates the expertise of mechanics, electronics, aeromechanics, high frequency transmitter, etc. It should be assemble and debug exactly to avoid the accidents. The owner of this product should operate it in safety way. If operate improperly, it may cause serious bodily injury and property damage. We do not assume responsibility, because we could not control the process of their assembling, using and operating.

(2)The product apply to the crowd have experience of operating model and above the age of 14.

(3)The place for flight should be legal of location to handle remote control model,such as air line,high-voltage wire etc.

(4)Product once sold, we are not responsible for safety duty cause byoperation, using, handling, etc.

(5)If you have questions of using, operating or maintaining, please contact tolocal authorized dealer, they will provide technical assistance and service.

2 Safety Caution

RC quad copter model is a high-risk of goods, you must be sure to keep away from crowd when in flight. Artificial assemble improper or body damaged, poor electronic equipment, and unfamiliar operation, it possible to cause unpredictable accident of quad copter damaged or personal injury, etc. Please pay attention to safety, and take responsibility of your negligence.

(1)Keep away from barrier and crowd

It has uncertain flight speed and state when the RC quad copter is flying. When in flight, please keep away from crowd, high building, high-tension wire. At the same time, avoid to flight in the storm and thunder. To make sure the safety of pilot, crowd and property.

(2)Keep away from humid conditions

The quad copter is consist of many precision electronic components and mechanical parts, so it must prevent moisture into the quad copter body. In case of an accident cause by malfunction of the body or electronic components.

(3)Safety operate

According your status and flight skill to control the quad copter. Fatigue, mental poor or improper operation, will increase the probability of an accident risk. When you tired and out of sorts or improper handling, it will increase the risk of accidents.

(4)Keep away from high-speed rotary parts

When the propeller at high speed rotating, the pilot, crowd or other object should keep away from the rotating part for fear of causing the risk and damage.

(5)Keep away from heat

The RC quad copter is be made up of metal, fiber, plastic and electronic components. Therefore, it should be keep away from heat and keep off the sun for longtime, avoid the heat set off deformation of the shape even damage.

3: Preflight notice

(1)Flying environment should be an open space. The recommendation of the space is more than 8M(width) x 8M(length) x 5M(high)

(2)Make sure the power state of batteries for transmitter and receiver is full.

(3)To ensure the throttle stick and throttle trim of the transmitter is on the lowest position.

(4)In starting up, you must be comply with order of power on and off. When starting up,you should be open the power of the quad copter first, then open the power of transmitter. When power off, you should be cut off the power of the quad copter, then turn down the transmitter. Incorrect order of power on and off may cause the quad copter out of control, and affect the safety of others. Please make a habit for correct turn on or shut off.

(5)To confirm the junctions of the battery and motor or other components are tight. The shock in flying will make the junction of power loose, then cause the quad copter out of control.

2

Packing instruction

All items below are included in packing:

- (1)Quad copter (2)USB (3)Transmitter (4)Main blade
A blade B blade



Main parameter



Main motor : Hollow-cup
Battery: 3.7V
Charge time: about 30 minutes
Flying time: 4 -6 minutes
Operating range: about 30m

Functions of transmitter and install instruction

1.Functions of transmitter as Fig. 1

2.Installation of transmitter as Fig. 2, to install 2 AAA batteries (additional purchase) in right way

Caution

1.Install the battery should recognize the positive and negative terminals of the battery and battery box. Can not install in reverse.

2.Don't mix use the new and old battery, or difference kinds of battery.

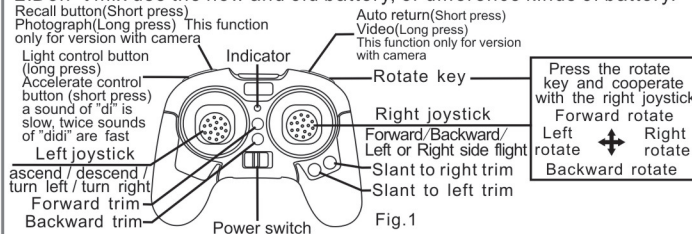


Fig. 2

Battery box

Battery cover

Press the rotate key and cooperate with the right joystick

Forward rotate

Left rotate

Right rotate

Backward rotate

Fig. 1

Auto return mode and recall button

1.Auto return mode

Once the quad-copter is paired with the transmitter, press the auto return mode button to enter auto return mode. The transmitter will beep continuously. Pressing the auto return mode button again will turn off auto return. (Auto return mode can only be entered prior to take off. If you attempt to enter after take off, the copter will be misdirected or unable to fly.)

2.Recall button

When the quad copter flies under auto return mode, press recall button, the quad copter will fly back automatically. To stop the quad copter from flying back, please push the right joystick to any direction. (Recall function is only available under head free mode).

Recall button

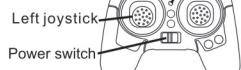
Auto return



3

Prepare for take off

- 1.Push the switch of quad copter to on position., Put the quadcopter on the flat ground, then the indicator light is flash fast. In this time, the quadcopter are in matching code status.
- 2.Turn on the transmitter, the indicator is flash, at this time, the transmitter is matching the code. Pull up the left joystick from the lowest position to highest position, then restore it. You will hear a long sound "di", and the indicator is always on, you can operate it.
- 3.The quadcopter should match code every time after power on, and then you can operate.
- 4.Every time you turn on or off the transmitter, the quadcopter need to re-open, and they should match code again.



Method for charging battery of quad copter

1. Turn off the power of the copter, then insert the plug into the charging hole of the copter.
2. Connect the USB cable to the computer for charging. (The indicator light is off when charging, after charged full, it is light up.)



Turn off power when charging.

Tips for low tension

When the copter is flying to 5 minutes, and all the lights of the fuselage are glistening. It means the copter is in low tension. (In low tension, prohibit flipping)

Level calibration

1. Quad copter level calibration

When the quad copter after take-off can not be corrected by fine-tuning, lead to the quad copter hovering is operating difficultly, follow these steps to calibrate the quad copter:

- (1)Pull out the power of quad copter firstly, then turn off the switch of the transmitter.
- (2)Turn on the quad copter, and put it on the horizontal plane, the lights of fuselage flashing.
- (3)To open the transmitter power switch, push up the throttle stick to the peak position, then push down to the lowest position (as Fig1 & Fig2). About 3 seconds later, you will hear a long sound "di", it means the quad copter succeed to match code, and the lights of the fuselage will always on. At this time the transmitter get into level adjustment.
- (4) Push down the throttle stick to left bottom, at the same time, push down the rudder stick to right bottom (as Fig.3 show). At this point, the quad copter indicator light is flash, it is calibrating. Till the indicator light is always on, it completed. It will at normal flight



Fig. 1



Fig. 2

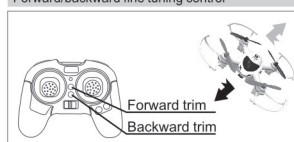


Fig. 3

4

Fine-tuning operation

Forward/backward fine tuning control



When the quad copter in forward or backward flight, multitouch the forward backward fine-tune key, to regulate balance for the quad copter

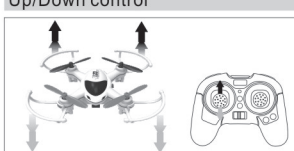
Left/right side flight fine tuning control



When the quad copter side flight to left or right, multitouch the left/right side flight fine-tune key, to regulate balance for the quad copter

Operating direction

Up/Down control



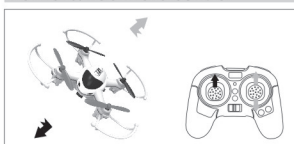
when the left joystick(throttle stick) is pushed up or down, the rotor will speed up or slow down, the quad copter will ascend or descend.

Ascent/Descend control



when the left joystick(throttle stick) is pushed up, at the same time push it to left or right, the quad copter will be turn left or right.

Forward/Backward control



when the left stick(throttle stick) is pushed up, at the same time push the right joystick up or down, the quad copter will forward or backward.

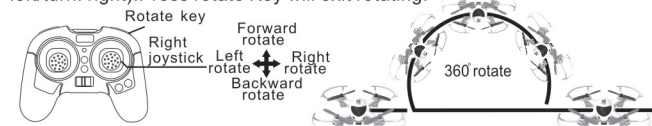
Left or Right side flight control



when the left stick(throttle stick) is pushed up, at the same time push the right joystick to left or right, the quad copter will slight to left or right.

3D rotate operation

when the quad copter flying, press rotate key ,it have the didi sound. Push right joystick, the quad copter will rotate around(forward/backward/turn left/turn. right).Press rotate Key will exit rotating.



5

The way for camera shots (Only fir aerial version)

1. Turn on the power of the quad copter, the blue light of the camera is always on and red light is out. It show that the camera is in normal working state. When the blue light is always on and the red light is flash, it meant that the SD card does not access.
2. Photograph: When the camera is in normal working state, press the photograph key, "Di" is heard and the red light of the camera is flashed, it meant the photograph is completed.
3. Video: When the camera is in normal operating state, press the video key, "Di" is heard and the red light is always on, it is videotaping. When you press the key again, "Di" is heard and the red light is out, it is finished.

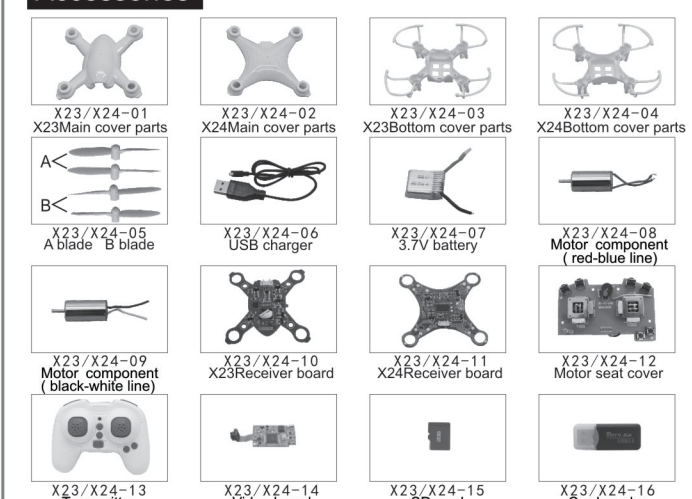


CAMERA

Troubleshooting guide

Problem	Cause	Solution
The indicator of transmitter doesn't works	Install the batteries but doesn't follow the right polarity. Batteries are drained.	Check and make sure that the batteries are installed by the right polarity. Install new batteries.
No control	Transmitter's antenna is not screwed in place and/or is not fully extended.	Ensure that the antenna is screwed into the controller and fully extended.
Copter is not flying high enough	You play the helicopter in strong wind weather. Rotor speed is too slow. Copter is not fully charged.	Do not fly in strong winds.For it will limit or disturb your flying control. Pushing up the left stick(throttle stick). Fully charge your Copter.

Accessories



6