



RM1

Quick Start Guide

(Please study this Guide thoroughly
before use)

RM1 Bluetooth Remote Controller

The FiiO RM1 is a Bluetooth remote controller for controlling Bluetooth-enabled devices. It may be used to control Bluetooth-enabled digital audio players (such as our X7), as well as smartphones, for such functions as starting and pausing playback, volume adjustment and changing tracks (Bluetooth BT3.0 support or above required; actual functionality depends on the connected device).

A. Main features

1. Remote control of play / pause, track change and volume adjustment **on smartphones and Bluetooth-enabled media players**
2. Uses standard replaceable CR2016 battery
3. Battery saving (automatically enters sleep after 11 minutes of inactivity to save battery)
4. **LED status indicator**
5. Steering wheel mounting bracket included
6. Removable remote control handle included

B. Buttons introduced



① Volume up: Press briefly to turn up volume by one increment; hold down to change volume continuously

② Indicator LED

③ Next track: Press briefly

④ Previous track: Press briefly

⑤ Play / pause: Press briefly

⑥ Volume down: Press briefly to turn down volume by one increment; hold down to change volume continuously



① Power / pairing button

② Strap lug

③ Battery cover notch

④ Battery cover

⑤ (Turn this way to open)

C. Instructions on use

1. Powering on and off

Power on: Hold power button at the back for 1 second; RM1 powers on after front status LED **lights blue for 1 second**

Power off: Hold power button at the back for 3 second; RM1 powers off after front status LED flashes blue 3 times

2. Connecting to Bluetooth devices for the first time

- a. Turn on the Bluetooth function of device to be controlled by RM1
- b. Turn on the RM1. On first powering on, it will enter Broadcast mode for 60 seconds. **(Broadcast mode: The indicator LED flashes blue once per second.)**
- c. On your device to be controlled, search for Bluetooth devices. The RM1 will appear in the list of devices found. Choose the RM1 to pair with it and start controlling your device with the RM1.

(if the RM1 doesn't pair within 60 seconds, it will turn itself off. You may turn it back on to continue pairing.)

3. Connecting to previously paired Bluetooth devices

- a. Turn on the Bluetooth function of device to be controlled by RM1
- b. Turn on the RM1. For the first **5** seconds it will automatically look for the Bluetooth device it last paired with. Your device should pair with the RM1 within

these 5 seconds.

(if the RM1 can't pair within these 5 seconds, it will return to Broadcast mode ; if the RM1 doesn't pair within 60 seconds, it will go to sleep.)

4. Sleep

After having paired with a Bluetooth device, the RM1 will stay on for 11 minutes without any user input. After 11 minutes of inactivity on the RM1 it will go to sleep.

Press the Play button to wake the RM1 and it will attempt to connect to the paired device again—refer to (3b).

D. Main parameters

Brand	FiiO
Model no.	RM1
Dimensions	35mm diameter x 7.8mm
Weight	10g (incl. battery)
Power	CR2016 button-type lithium battery (3V)
Battery dimensions	20mm diameter x 1.6mm
Battery capacity	75mAh
Battery life	About one month
Effective	10 meters (no obstructions)

distance	
Sleep	After 11min. of inactivity
Operating frequency	2.4GHz
Supported Bluetooth devices	BT3.0

E. Changing the battery

1. When to change the battery?

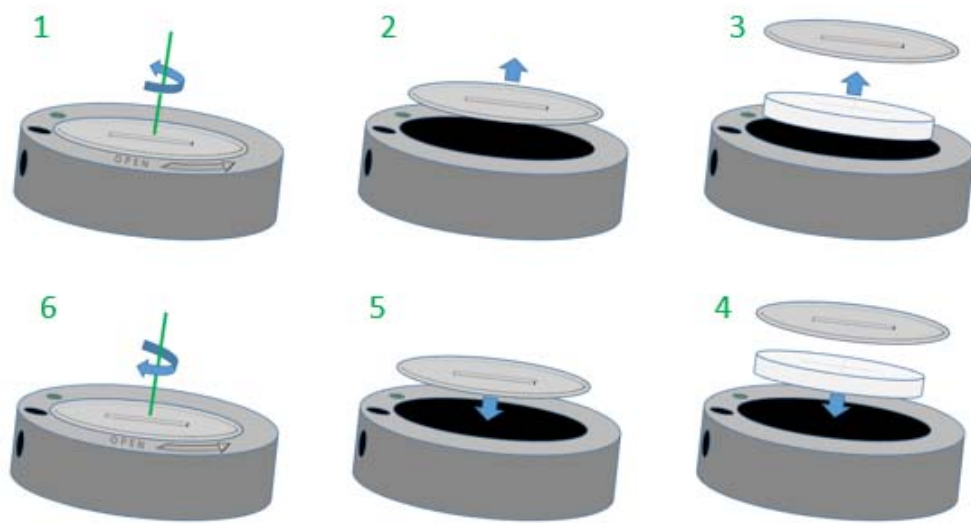
- . When the indicator LED dims.
- . When the remote control fails to control the paired Bluetooth device.
- . When the RM1 can't be turned on and the indicator LED does not light.

2. How to change the battery?

Insert a coin into the battery cover notch and turn counterclockwise to open and take off the battery cover. (other tools such as screwdrivers are not suggested as they may scratch the device.)

Remove the old battery, place the new CR2016 battery in positive side up, and put battery cover back on.

Insert coin into the battery cover notch and turn clockwise to lock the battery cover.



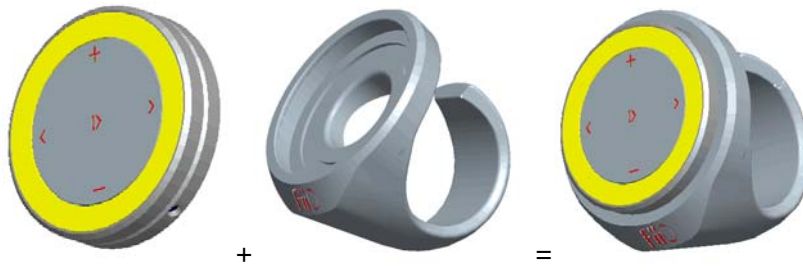
Note: only the same CR2016 3V lithium batteries should be used for replacement, to avoid installation failure or damage to the RM1.

F. Accessories introduced

1. Steering wheel mount

Mount the RM1 onto the steering wheel and you may use our remote safely while driving.

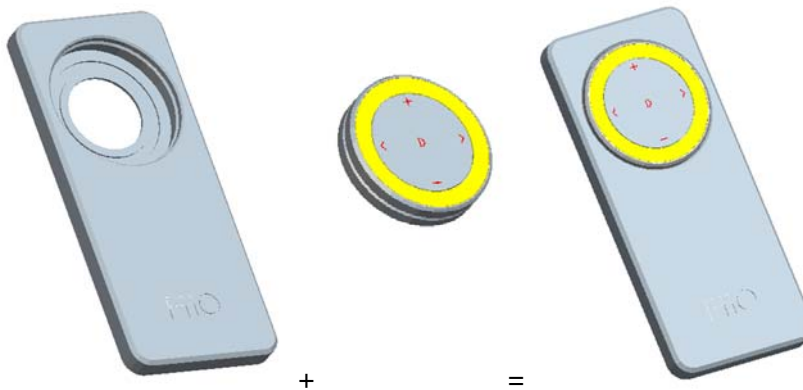
The RM1 snaps onto the mount easily as shown:



2. Remote handle mount

For everyday use, mount the RM1 onto the remote handle for more convenient handholding.

The RM1 snaps onto the mount easily as shown:



G. Use conditions

1. Can the RM1 only be used in conjunction with Bluetooth-enabled FiiO players?

The RM1 may be used in conjunction with a variety of Bluetooth-enabled players, smartphones, tablets, boomboxes, etc. The actual compatibility varies with the device.

2. Is the RM1's emissions harmful to health or not?

The RM1 has been extensively tested to comply with all electromagnetic emissions control standards and is not harmful to humans.

3. It is recommended to turn off / not use the RM1 in these situations:

- . On airplanes or other special transport requiring communications devices to be turned off
- . In hospitals, oil refinery plants and other such special / hazardous venues
- . If you or a person next to you uses a pacemaker

FCC Warning

This device complies with Part 15 of the FCC Rules. Operation is subject to the following two conditions: (1) this device may not cause harmful interference, and (2) this device must accept any interference received, including interference that may

cause undesired operation.

Changes or modifications not expressly approved by the party responsible for compliance could void the user's authority to operate the equipment.

Note: This equipment has been tested and found to comply with the limits for a Class B digital device, pursuant to part 15 of the FCC Rules. These limits are designed to provide reasonable protection against harmful interference in a residential installation. This equipment generates, uses and can radiate radio frequency energy and, if not installed and used in accordance with the instructions, may cause harmful interference to radio communications. However, there is no guarantee that interference will not occur in a particular installation. If this equipment does cause harmful interference to radio or television reception, which can be determined by turning the equipment off and on, the user is encouraged to try to correct the interference by one or more of the following measures:

—Reorient or relocate the receiving antenna.

—Increase the separation between the equipment and receiver.

—Connect the equipment into an outlet on a circuit different from that to which the receiver is connected.

—Consult the dealer or an experienced radio/TV technician for help.