

Model:HV-888

V4.0 Bluetooth LAN

User's manual

PACKAGE CONTENTS

- * Bluetooth USB Dongle
- *CD
- *User's manual

Specification parameter

Chip: CSR 8510 A10

Dimensions: 12mm*22mm

Transmission speed: 3MBPS

Receiving/Sending Range: 10-20M(Recommended distance: Within 10M)

Interface: USB standard compliance

Compatible device: Bluetooth Keyboards/Mice/Earphones/Headphones/Speakers/Gaming controllers

Compatibility: Compatible with Window98,98s,98se,me,2000,xp,7,8,10

Hardware Installation

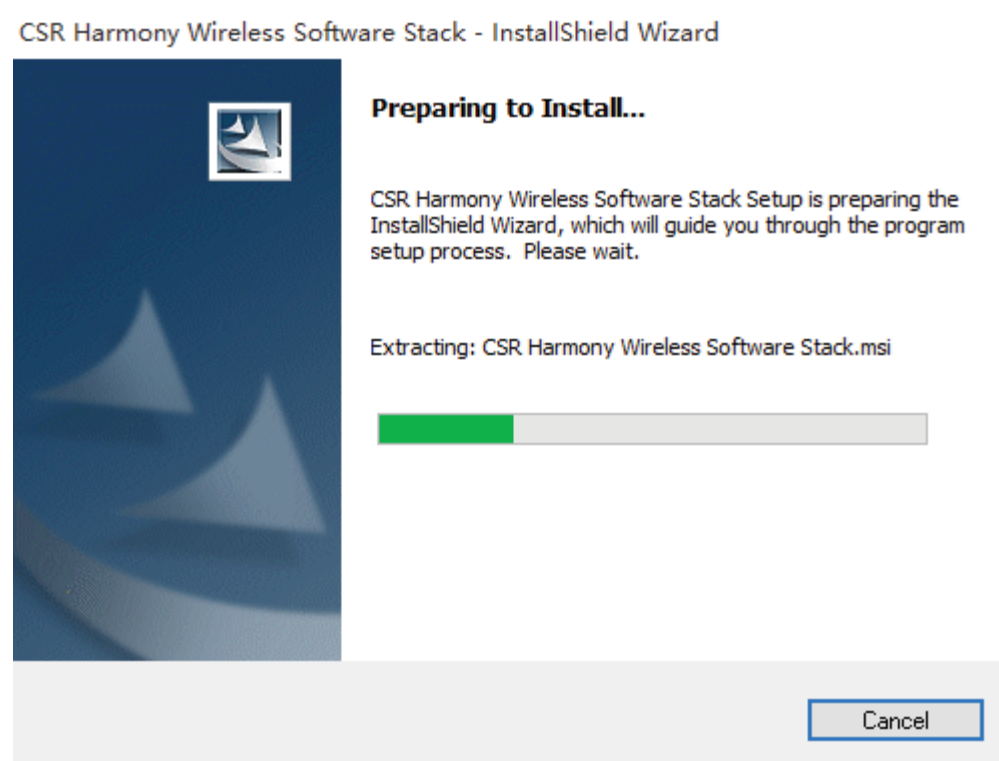
1. Pls insert the adapter into one of the USB ports of your computer.

Note: You could use the provided CD to install the driver, or download the newest driver software from our official website(<http://www.havit.hk/support/downloads>).

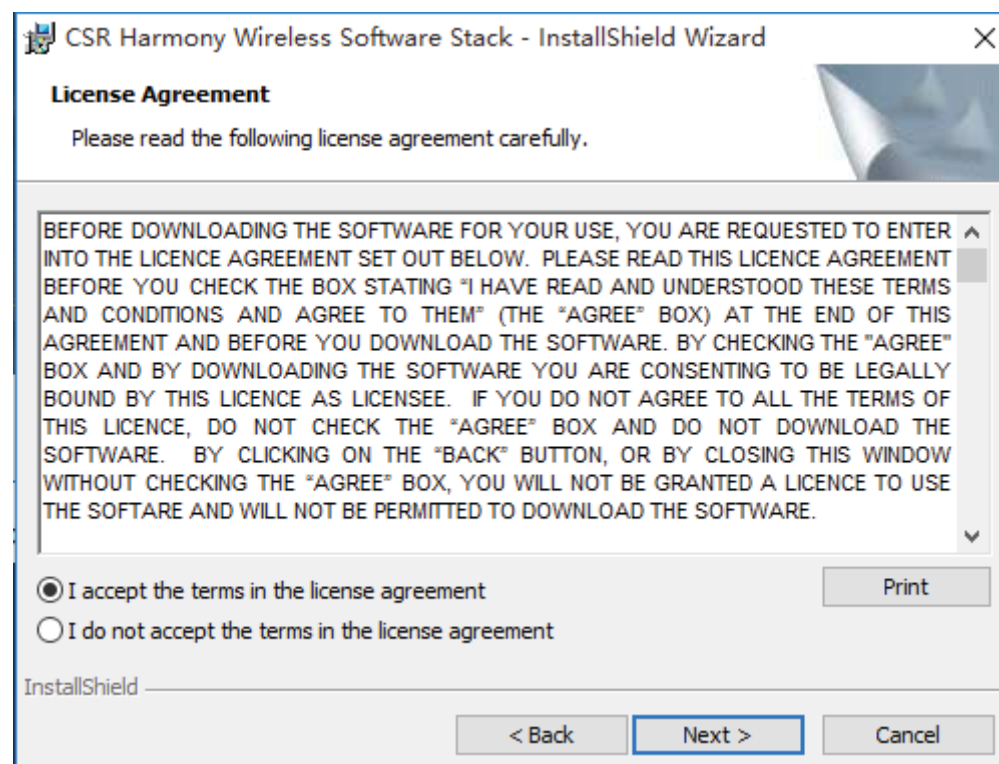
2. As to 32 bit, pls run "Set up" in the same page of the folder x32 to install the driver. AS for 64 bit, pls install the driver via "Set up" in the folder named "x64". You could choose the appropriate language of the installation interface for yourself.

Note: If your computer is built-in Bluetooth pls enter the Device Manager to disable it before using the HV-888and its driver.

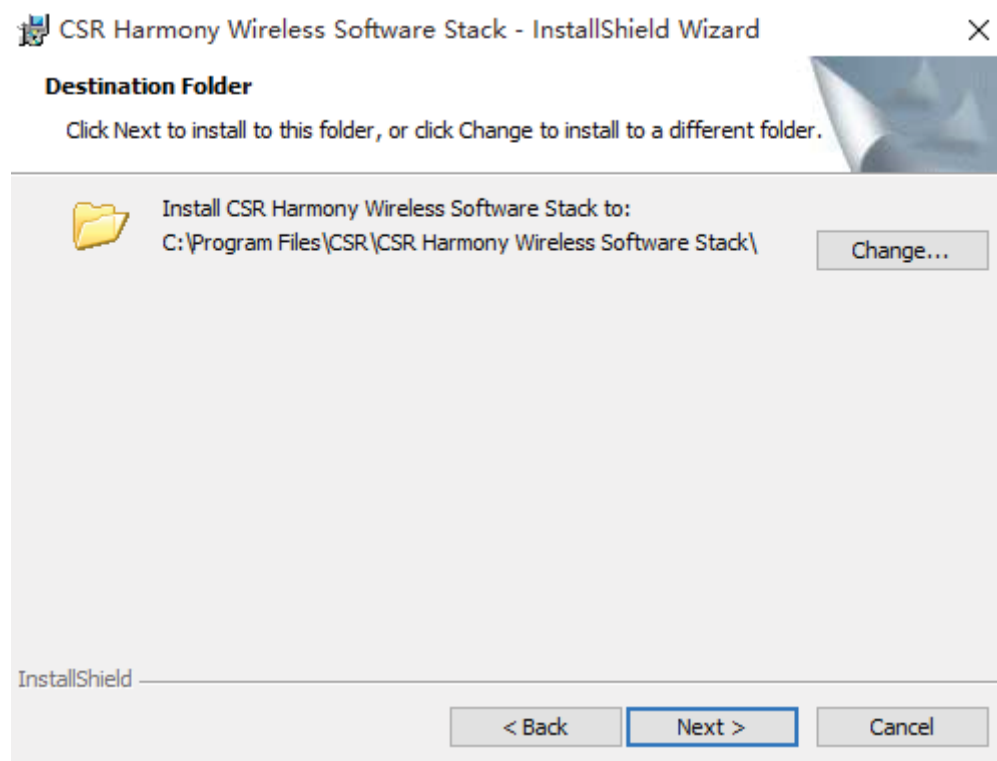
3. After language selection, it prepares to install.



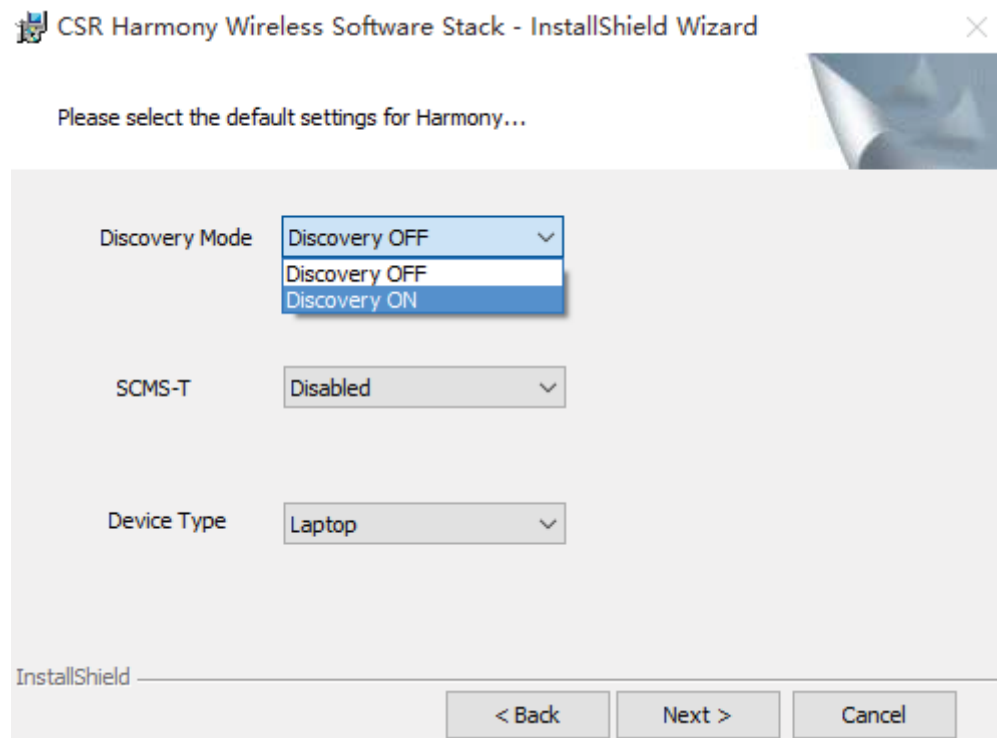
4. The third interface: Pls choose 'I accept the terms in the license agreement' and then click 'Next' to the next step.

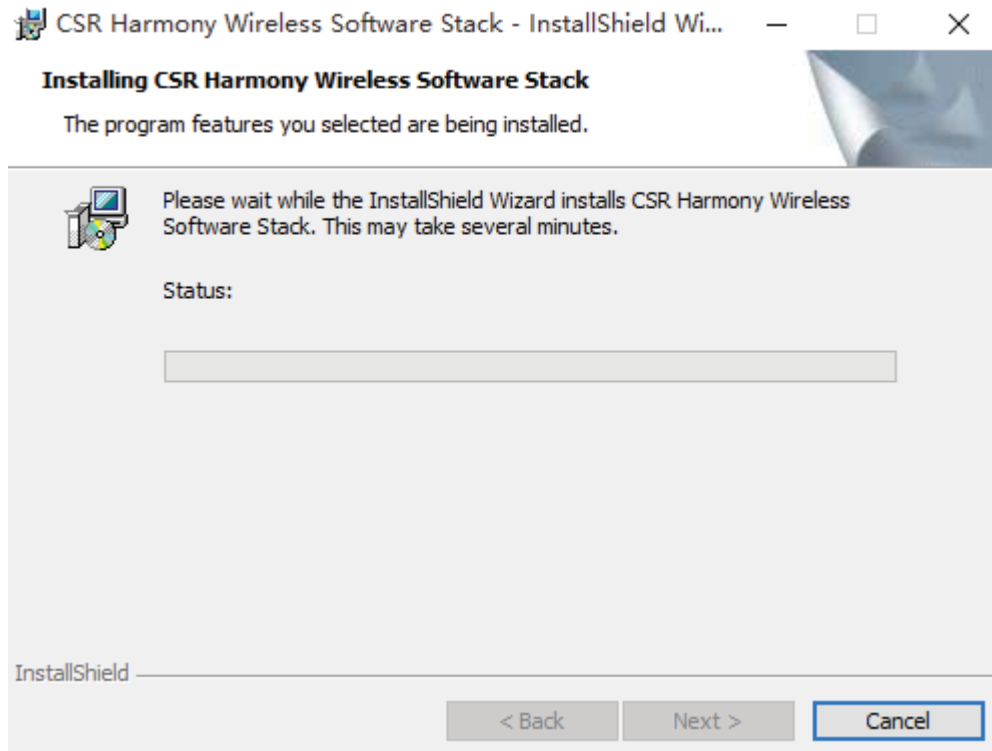


5. You could choose 'Change...' if you want to store it in other folder.

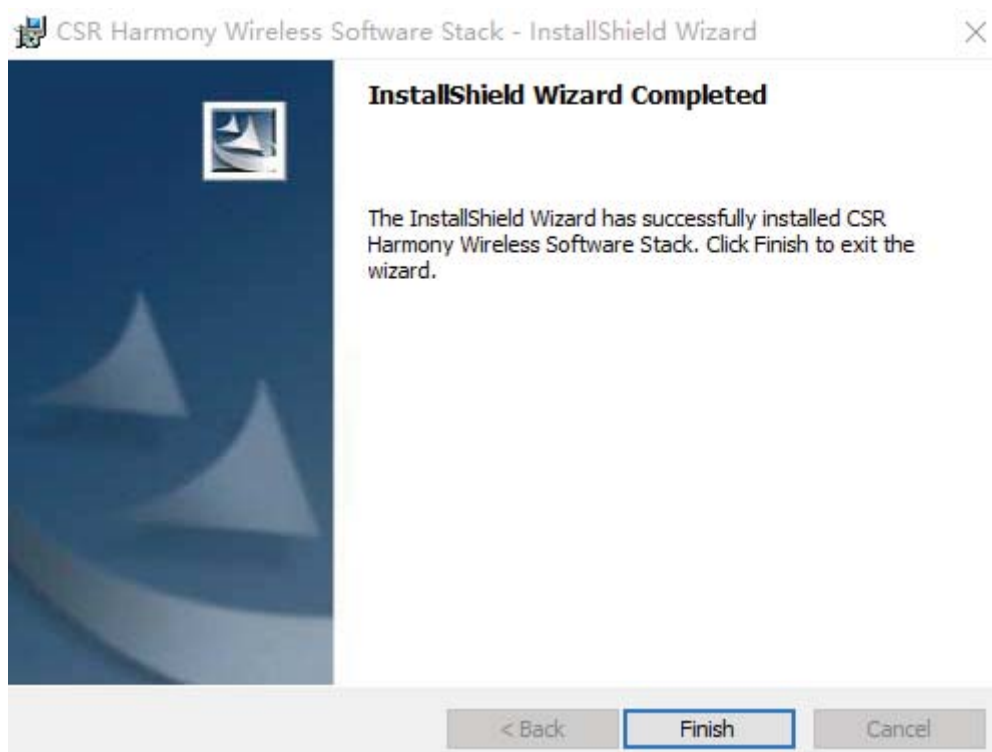


6. Pls choose 'Discovery ON' as the following picture shows.





7. After the waiting of several minutes, the installation completes.



8. If the application is installed successfully, the icon of Bluetooth will appear in blue on your desktop of your computer. Right click the icon and choose 'Add Bluetooth Device' and then click 'All' in the list. Or follow 'My Computer' → 'My Bluetooth Device' → 'Add Bluetooth Device' → 'All'. Then it will automatically search for Bluetooth devices. Turn on your Bluetooth devices and choose them on the computer to connect with computer once they are discovered.

9. If you want to voice chat via the Bluetooth earphones/headphones, Pls set the Voice Input: Bluetooth Audio Input Device, Voice Output: Bluetooth Audio Renderer in the setting of Voice Chatting.

Warnings:

1. Plug and play, if HV-888 is used for transmitting general files.
2. If connection with Bluetooth headphones or other devices for voice transmitting, installation of the driver is needed.
3. The Bluetooth adapter is just for signal transmitting, but it has nothing to do with the stereo.
4. It's not compatible with Windows 8.1 or IOS system. If using with laptop,Android system is not supported.
5. When you use wireless Bluetooth earphone/headphone connecting to your computer via the HV-888 Bluetooth adapter, your wired earphone/headphone will automatically be disabled.

FCC NOTE

This device complies with Part 15 of the FCC Rules.

Operation is subject to the following two conditions: (1) this device may not cause harmful interference, and (2) this device must accept any interference received, including interference that may cause undesired operation.

THE MANUFACTURER IS NOT RESPONSIBLE FOR ANY RADIO OR TV INTERFERENCE CAUSED BY UNAUTHORIZED MODIFICATIONS OR CHANGE TO THIS EQUIPMENT. SUCH MODIFICATIONS OR CHANGE COULD VOID THE USER'S AUTHORITY TO OPERATE THE EQUIPMENT.

This equipment has been tested and found to comply with the limits for a Class B digital device, pursuant to part 15 of the FCC Rules. These limits are designed to provide reasonable protection against harmful interference in a residential installation. This equipment generates, uses and can radiate radio frequency energy and, if not installed and used in accordance with the instructions, may cause harmful interference to radio communications. However, there is no guarantee that interference will not occur in a particular installation. If this equipment does cause harmful interference to radio or television reception, which can be determined by turning the equipment off and on, the user is encouraged to try to correct the interference by one or more of the following measures:

- Reorient or relocate the receiving antenna.
- Increase the separation between the equipment and receiver.
- Connect the equipment into an outlet on a circuit different from that to which the receiver is connected.
- Consult the dealer or an experienced radio/TV technician for help.

This device complies with FCC's RF radiation exposure limits set forth for an uncontrolled environment, and it must not be collocated or operated in conjunction with any other antenna or transmitter.