



Wireless NVR kit Quick installation guide

9 NVR, IPC parameter list

NVR parameter	
Operating System	Embedded linux OS
AV(audio/video)input	Network Video 4CH 8CH
	Network video input bandwidth 20Mbps
AV (audio/video) output	HDMI input 1ch, resolution: 1024x768, 1366x768, 1440x900,1920x1080p
	VGA output 1ch, resolution: 1024x768, 1366x768, 1440x900,1920x1080p
AV CODEC	Video Resolution D1/720P/960P
Specification	Video playback 4CH 8CH
Video Control	Video Capture mode Manual, Time, Motion, Alarm
	Playback mode Real time, Routine, Event
HDD	Backup USB backup
	Type 1.5 SATA interface
External Interface	Max Capacity 4 TB at most for each
	Network Interface 1 adaptable RJ45 10M/100M, 2 WiFi interface
	USB Interface 2 USB 2.0
Network Control	Protocol UPnP (play&plug) - SMTP (email service) - PPPoE (dial-up) - DHCP (Automatically obtain an IP address) ,etc...
Others	Power DC 12V 3A
	Consumption(excluding HDD) ≤5W
	Working Temperature -10℃—55℃
	Working Humidity 10%—90%
	Size 257*210*45mm
	Weight (excluding HDD) ≤1Kg

04

Wireless NVR kit Quick installation guide

► Hardware description

1 Statement

Sincerely thanks for purchasing our products, pls contact us if any problem or requirement. This manual is for network video recorder.
This user manual may contain incorrect place in technology, place not matching with product function or operation, or printing mistake.
We will update our user manual according to our updating in product, and will periodically improve or updating the product and programming. The updating content will add in the new user manual, we won't inform.
If the product's description in user manual is inconsistent with the real products, pls based on the real products.

2 Safety cautions

1. Pls don't put a container with liquid on DVR(like Vase) .
- 2.DVR should put at a ventilation place, and prevent clogged the ventilation hole.
- 3.Check the power voltage, in case of damage by wrong voltage.
- 4.DVR should work at the technical standard range of temperature and humidity.
- 5.Place DVR on level, pls avoid installing at a sharp pounding place.
- 6.Moisture dust in PCB will cause short circuit, for long-term use of the DVR, you can periodically remove dust in PCB by brush.
- 7.It will cause burst if replace battery in wrong way, we don't suggest user to replace by himself, if need replace, only use the same type or equivalent type battery, pls don't try to open or maintain the battery.
- 8.DVR installation need according to specification, you can take the national or local standard as reference.

3 Open-package inspection

After receive product, pls open giftbox, remove NVR and put it on suitable place, check accessories. If any damage or lack, kindly pls contact to the distributor.

01

Wireless NVR kit Quick installation guide

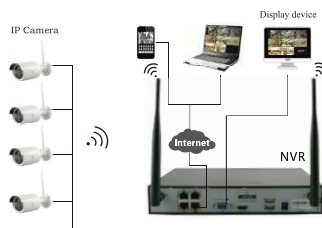
IPC Specification

IPC Specification	Embedded linux
Operating System	Embedded linux
Image Sensor	1/3" Progressive Scan Sensor
SN Ratio	> 39 dB
Resolution	1280 × 720 16:9 High Definition
Minimum Illumination	Color: 0.1 Lux B/W: 0.01 Lux
Lens	4mm
OSD	Date Time & Title
White Balance	Auto
Day & Night	Auto Color / B/W
3D DNR	Auto
Mirror flip	On / Off
Privacy Masking	4 Zone Selectable
Frame Specification	Three Streaming at the Same Time: H.264 1280x720@30fps or below H.264 640x480@30fps or below
Anti-thunder Level	Standard IEC 61000-4-5
Power Input	DC 12V 3A
Consumption	≤5W
Interface	RJ45 / WiFi 802.11b/g/n
Working Temperature/Humidity	-10℃ to +50℃ / 30% to 80% RH
Storage Temperature/Humidity	-20℃ to +60℃ / 20% to 90% RH
Size	257(L) × 210(W) × 45(H)mm
Weight	300g

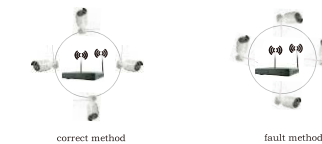
05

Wireless NVR kit Quick installation guide

4 Installation diagram



5 Antenna location



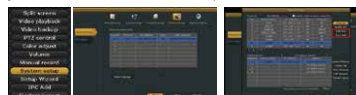
02

Wireless NVR kit Quick installation guide

► Software operation

1 Add camera by matching code

Steps: right click the blank of main interface -> click "System Setup" -> "Channel Setup". Click "quick adding", then Pop up "video manage".
Two ways for Wireless NVR to add IPC, "Code Add" and "Auto Add".
Adding camera by matching code, the camera transmits video images through wireless and NVR, IP is 172.25.142.X.
Auto adding the camera, the camera transmits video images through the cable and NVR, IP is 172.25.142.X.
Notes: The camera has been matched by factory, no need to add other cameras. If you need to match one code, firstly, take one network cable and connect to any NVR lan port and power on the device to make sure there is still have any channel can add one camera.



2 Video playback

Step: Right click mouse in main menu —Video playback —choose channel No. —choose record mode — in Search time, input beginning time and end time — click search, recording will come out midring time bar —click playback to start.
Tips: Playback icon introduction: [Left Arrow] playback 1 frame previous [Right Arrow] playback 1 frame next [Play] play [Pause] pause [Fast Forward] fast forward x2, x4, x8

06

Wireless NVR kit Quick installation guide

The signal coverage of Antenna is similar to a round circle. Antenna located in center of the round circle, signal of surrounding is much stronger, but much weaker if antenna endpoints backoff direction, according to the signal divergence characteristics of antenna, and in order to guarantee the video quality, IPC antenna should try to keep in parallel or tangent with NVR antenna.

6 HD Install

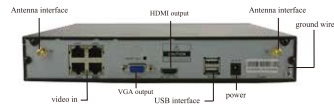
Notice: that the HDD had been used need supplier recommend, and need make sure already cut off the power.

Install Steps:

1. Remove the screw of the dvr
2. Connect the HDD cable and power line
3. Assemble the screw, and fix the HDD in the bottom of NVR
4. Close the cover and fix it



7 Rear Panel Description



03

8 Turn on/off

Confirm that AC voltage accessible matches with DVR. Ensure that the DVR power outlet connect with a good middle ground grounding. After switching power, the device started, [POWER] light is on. Turn into system, if the panel status light flashing, it's normal conditions.

Wireless NVR kit Quick installation guide



3 Video backup

Step: Right click mouse in main menu —Video backup —choose channel No. —choose record mode — in Search time, input beginning time and end time — click search, recording will come out — choose the video which need to backup — click video backup
Tips: Support 32G U disk backup max, recording will be packed every one hour



4 Video detection

Step 1: Right click mouse in main menu — System setup — Record setup — choose motion — choose all — click Copy to — click OK to save setting.
Step 2: Choose Video detection — set sensitivity as required — choose motion — set Alarm, Buzz or Email as required — click Copy to — click OK to save setting.



07

5 Generate Esee ID

Prerequisite to generate Esee ID is that make sure video recorder is connected with network, and IP address is available. Right click mouse in main menu — System setup — Network setup. If user is familiar with LAN, then no need to choose DHCP which help to get IP address automatically. Manually input IP address and DNS address, video recorder will generate ID by network, once generated it will appear in menu.



If user is not familiar with LAN, or video recorder is in independent network, can choose DHCP to get available IP address.

After video recorder get IP address, it will generate Esee ID automatically.



6 Access in LAN

Step 1: Right click mouse in main menu — System setup — Network setup — check video recorder IP address.

Step 2: Access by computer in same LAN, input video recorder IP address and port (if port is 80, no need to input) in IE browser or any other browser. Then it will access LAN log in webpage, input user name and password, click log in.

Step 3: Once access successfully, can get video.

Tips: Please make sure video recorder and computer in same network segment.

05



7 Access in WAN

Step 1: Right click mouse in main menu — System setup — Network setup — check video recorder IP address.

Step 2: Access by computer in WAN, input www.e-seenet.com in IE browser or any other browser. Then it will access log in webpage, input ID, user name and password, click log in.

Step 3: Once access successfully, can get video.

Tips: Video quality and fluency depend on video recorder side upload speed and computer side download speed, each channel need above 30KB.



8 Android mobile application download and installation

09

No. 1: Go to www.e-seenet.com in computer, click help — software download — find Android mobile application, click download to save in computer — copy to mobile to install.

No. 2: Scan two-dimension code by mobile directly, enter download page, click download to mobile. If mobile do not support two-dimension scan, can input www.e-seenet.com/help/download.php in mobile browser, enter download page, click download to mobile.



9 Iphone application download and installation

Step 1: Go to APP store.

Step 2: Search EseeNet.

Step 3: Input APP ID PASSWORD.

Step 4: Click download.



10

10 Esee mobile application (EseeNet) - Add device

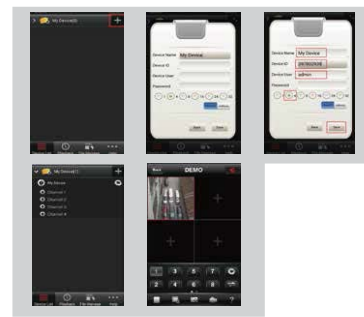
Step 1: Log in EseeNet application, click "+" icon.

Step 2: Enter device edit page.

Step 3: Input video recorder log in information.

Step 4: Added successfully, it will show below page.

Step 5: Click channel No. to get video.



11

11 Esee mobile application (EseeNet) — Function introduction

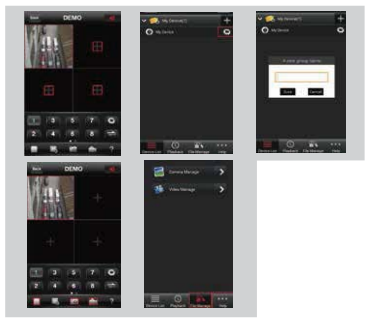
Step 1: It will connect channel 1 video by default, click "+" to add more channel.

Step 2: Click this icon to edit video recorder log in information.

Step 3: Add device group.

Step 4: Play/Pause/Stopshot/Record.

Step 5: File management and more settings.



12

Packing list

S/N	Item	Quantity
1	NVR	1pcs
2	Screw bag (4 screws for HDD)	1pcs
3	USB mouse	1pcs
4	1 meter network cable (for IPC code match)	1pcs
5	DC 12V3A power supply (for NVR)	1pcs
6	NVR user manual - Installation Instructor	1pcs
7	FRUITRAW IPC Camera	4/8PCS
8	DC 12V3A power supply (for IPC)	4/8PCS
9	Screw bag (for IPC)	4/8PCS

Notes:

1. Device will not in guarantee if caused by below reason:

- A. Accident, negligence, disaster, mis-operation.
- B. Do not conform to the environment and conditions, such as power improper, working temperature too high or too low, lightning, smoke, etc.
- C. Ever be maintained by other center which not belong to the real factory.
- D. Goods already sold more than 12 months.



13

FCC Statement

This equipment has been tested and found to comply with the limits for a Class B digital device, pursuant to part 15 of the FCC Rules. These limits are designed to provide reasonable protection against harmful interference in a residential installation.

This equipment generates, uses and can radiate radio frequency energy and, if not installed and used in accordance with the instructions, may cause harmful interference to radio communications. However, there is no guarantee that interference will not occur in a particular installation. If this equipment does cause harmful interference to radio or television reception, which can be determined by turning the equipment off and on, the user is encouraged to try to correct the interference by one or more of the following measures:

- Reorient or relocate the receiving antenna.
- Increase the separation between the equipment and receiver.
- Connect the equipment into an outlet on a circuit different from that to which the receiver is connected.
- Consult the dealer or an experienced radio/TV technician for help.

FCC Radiation Exposure Statement

This device complies with FCC radiation exposure limits set forth for an uncontrolled environment and it also complies with Part 15 of the FCC RF Rules. This equipment must be installed and operated in accordance with provided instructions and the antenna(s) used for this transmitter must be installed to provide a separation distance of at least 20 cm from all persons and must not be co-located or operating in conjunction with any other antenna or transmitter. End-users and installers must be provided with antenna installation instructions and consider removing the no-co-location statement.

This device complies with Part 15 of the FCC Rules. Operation is subject to the following two conditions:

- (1) this device may not cause harmful interference, and
- (2) this device must accept any interference received, including interference that may cause undesired operation.

Caution!

Any changes or modifications not expressly approved by the party responsible for compliance could void the user's authority to operate the equipment.

14

APP download scan here



15