



QUICK SETUP GUIDE

WNVR SERIES ADD-ON CAMERAS



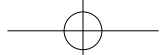
Indoor
Model #
CAM-WNVR2P-IN



Outdoor
Model #
CAM-WNR2P-OU

HD  **WIRELESS**

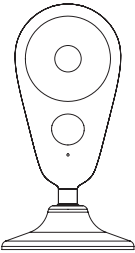
www.NightOwlSP.com



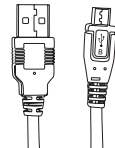
What's in the Box

NOTE: Whether you've purchased an indoor or outdoor camera, the setup is the same.

Wireless IP Indoor Camera Model # CAM-WNVR2P-IN



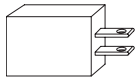
Camera (1x)



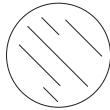
9.8 ft. Power Cord (1x)



Reset Pin (1x)



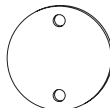
5V DC 1.0A Power Supply (1x)



Adhesive Mounting Tape (1x)

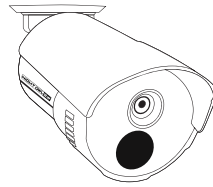


Bracket Mounting Hardware



Magnetic Mounting Bracket (1x)

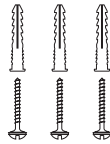
Wireless IP Outdoor Camera Model # CAM-WNR2P-OU



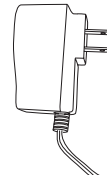
Camera (1x)



Camera Antenna (1x)



Bracket Mounting Hardware



1 x 12V DC 1.0A Power Supply (16.4 ft.)

Testing with a Smart Device



Status Light Key

Quickly Flashing—Pairing Mode (default).

Slowly Flashing—Camera is not connected to your WNVR or Wi-Fi network.

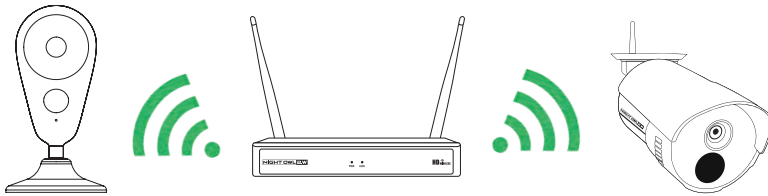
Solid Light—Camera is connected to a network and functional.

NOTE: For Option #2 setup, Night Owl recommends using your cell phone to test the location for your WiFi signal strength before installing the camera.

Add-On or Stand-Alone

Night Owl gives you options! Your camera can be used as an add-on to an existing Night Owl Wireless NVR kit or as a stand-alone camera that records to a microSD card.

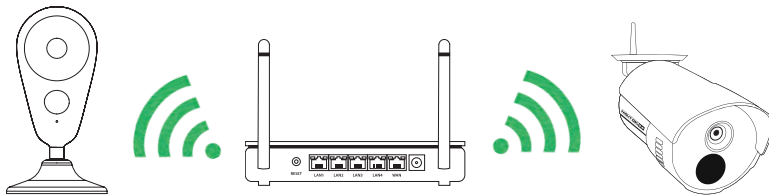
Option 1: Pairing to your existing Wireless NVR System



When used as an add-on to your existing Wireless NVR System, the camera can be viewed using your Night Owl X (for Smart Phones) and/or Night Owl X HD (for Tablets) application. Please follow the **OPTION #1** setup instructions to add your camera.

NOTE: You must complete add-on camera setup in the same room as the NVR.

Option 2: Stand-alone Camera Pairing to your Router



To use as a stand-alone camera, please follow the **Option #2** setup instructions found on page 6. You will need to download and install the Night Owl Connect App to view and control the camera. A microSD card (not included) will be required to use the recording function.

NOTE: Camera will be in pairing mode when first powered on. If the camera is not in pairing mode please follow pairing instructions found on page 9.

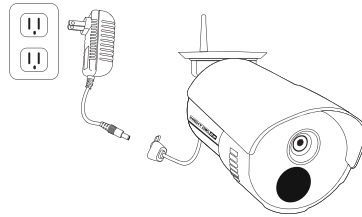
Option #1: Pairing to existing Wireless NVR System

By default, the camera will be in pairing mode when it's first powered on. Pairing allows for the wireless transmission coming from the camera to be detected by the Wireless NVR.

To pair an add-on camera to your Night Owl Wireless NVR, please use the following steps:

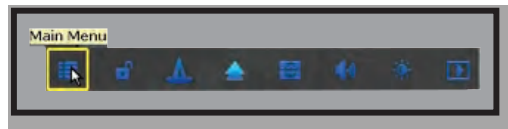
NOTE: When pairing the camera to your NVR make sure you are in the same room as the NVR. ALWAYS test the camera locally before installing.

- 1 Power on the add-on camera using the camera power adapter. You will hear the camera say, "Camera is in pairing mode" and the status light will flash quickly. If the camera is not in pairing mode please refer to page 9 for pairing instructions.

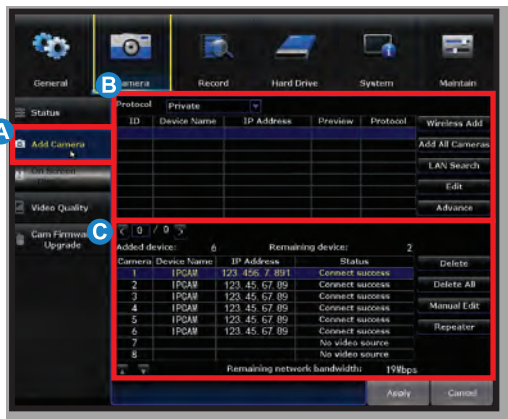


NOTE: Setup is the same for Indoor and Outdoor models.

- 2 With the NVR connected to a TV/Monitor, login, then right click on your mouse and navigate to the Main Menu using the options bar.



- 3
 - A Go to the Camera Menu and Select the **Add Camera** tab on the left side of the menu.
 - B The top portion of the screen will list cameras that have been found, but not yet paired.
 - C The bottom portion of the screen will show all cameras that are currently paired to the NVR.

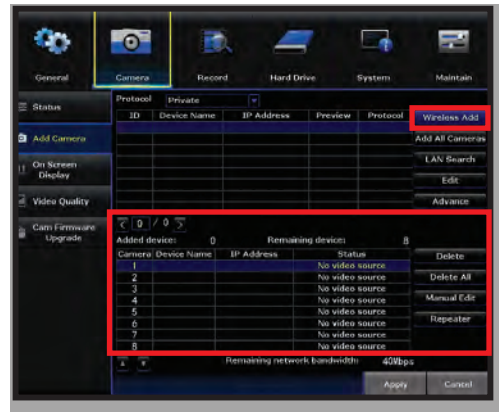




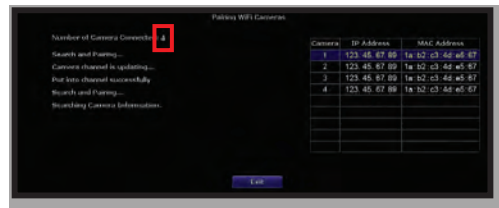
NOTE: Please be patient as NVR locates the add-on camera. May take up to 3 minutes.

- 4 With camera in pairing mode click on **Wireless Add** located on the Add Camera screen. Your NVR will now search for new cameras.

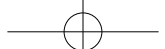
NOTE: The add-on camera will not appear in the bottom screen with the other paired cameras until the NVR finds and pairs the new camera.



- 5 Within the **Wireless Add** screen, the “Number of Cameras Connected” signifies those cameras that are already paired to the Wireless NVR and will not immediately reflect this new camera.

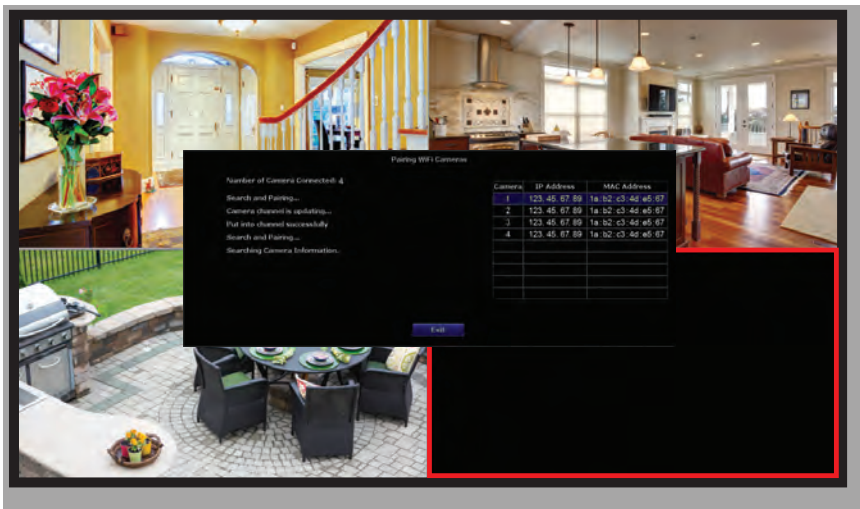


NOTE: You cannot exceed the number of Wireless NVR channels you have. If you have a 4-channel system, the maximum number of cameras you can have paired is 4.



Pairing to existing Wireless NVR System

- 6 If you have not exceeded the channel limitation, the new camera will appear in a vacant video field once paired.



- 7 **WooHoo!** Your add-on camera has now been paired to the Wireless NVR using the Wireless NVR's built in Wi-Fi.



Option #2 Stand-Alone Camera Setup



Don't have a Wireless NVR or want to use the camera on its own? No problem! To use as a Stand-Alone camera the following technical requirements must be met.

- 1 WiFi 2.4 GHz Router compatible with 802.11 b/g/n.
- 2 High Speed Internet Connection with a minimum of 2 Mbps upload speed.
- 3 Optional microSD Card needed to record (not included).

To use as a Stand-alone camera:

- 1 Be in same room as the router during setup, if possible.
- 2 Power on camera using the camera power adapter.
- 3 Camera will be in pairing mode:
 - A Status light will flash quickly.
 - B Camera will say "Camera is in pairing mode".

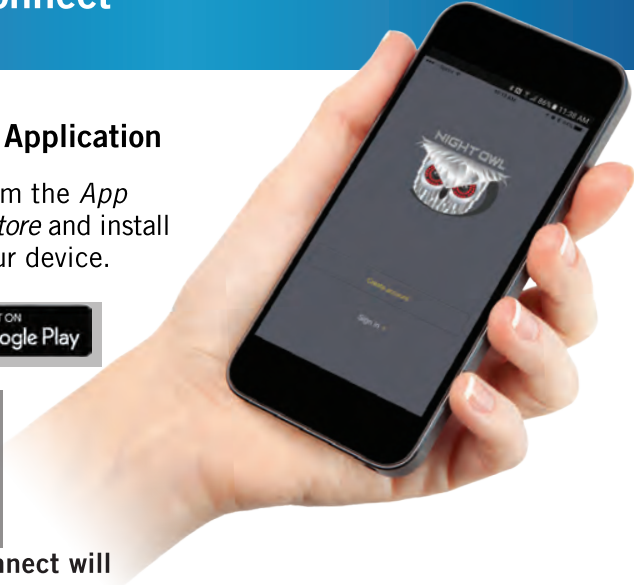
NOTE: If the camera is not in pairing mode please refer to page 9 for pairing instructions.
- 4 Know the name and password of Wi-Fi network being used.

NOTE: If you don't know your Wi-Fi password, please contact your Internet Service Provider (ISP). Night Owl will not be able to provide this information.

Using Night Owl Connect

Download and Install Application

- 1 Download the App from the *App Store* or *Google Play Store* and install the application on your device.



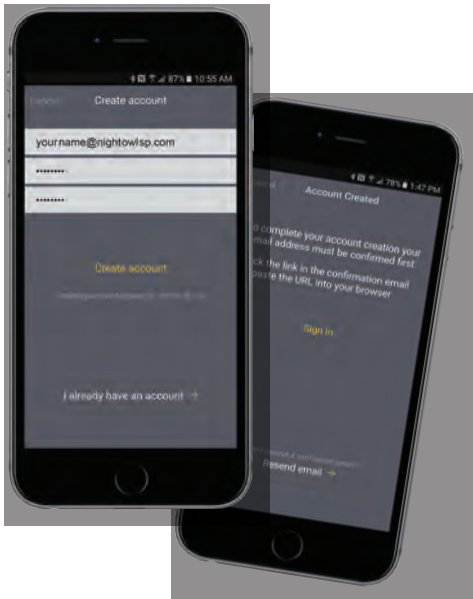
NOTE: Night Owl Connect will lead you through a step by step process for adding your camera to the App.

NOTE: Setup is the same for phone and tablet. Already have a Night Owl X or Night Owl X HD account? Your username and password will be the same for Night Owl Connect. Skip steps 2 and 3.

- 2 Create an account using an email address for the username and a password between 6–20 characters.

- 3 To confirm your email address, click the link in the confirmation email from No_Reply@NightOwlISP.com.

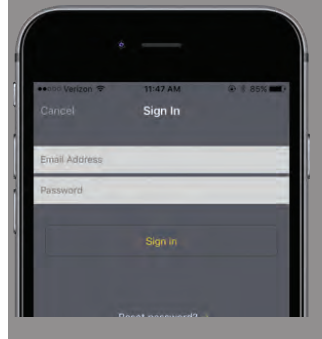
NOTE: Check your spam/junk inbox.





Login to Night Owl Connect

- 4 Login to the App to complete Setup process. Camera should be in pairing mode (default mode). If the camera is not in pairing mode, please refer to page 9 for pairing instructions.



- 5 Click the plus symbol to begin setup. The App will lead you through the rest of the setup process.



Night Owl X CMS Software

The Night Owl X CMS Software allows you to view your Night Owl Security system remotely from a PC or Mac®. Additionally, you can playback recorded video, save video and images directly to your PC or Mac®, configure numerous settings such as channel names, and set record preferences.

To download the CMS Software:

- 1 Go to www.NightOwlSP.com.
- 2 Click on the Support tab.
- 3 In the search bar, type “X CMS”.
- 4 Download the **Night Owl X CMS** software.
- 5 Once downloaded, select **PC** or **Mac®**.



Quick Tips

To Pair Camera:

For CAM-WNVR2P-IN—Insert the reset pin into the Sync/Reset hole and press until you hear the camera say “Please be patient. Camera is resetting”. Once the camera resets, you will hear “Camera is in pairing mode” and the Status light will flash quickly.



For CAM-WNR2P-OU—Press and hold the reset button until you hear the camera say “Please be patient. Camera is resetting”. Once the camera resets, you will hear “Camera is in pairing mode” and the Status light will flash quickly.



Using a microSD Card:

Recommended compatibility: Class 10, maximum space 128GB. If an SD card is used, video files will be stored on the SD card. microSD card is not include.



Slide microSD card into the camera.



Remove screws to open microSD card slot.
Slide microSD Card into SD card slot.

Additional Support

FAQs

1. Does my wireless NVR have to be connected to the Internet to work?

No, your wireless NVR does not have to be connected to the Internet to work. You can view live feed and recordings by connecting it to a TV/Monitor via HDMI or VGA.

2. Will I be able to view my system while away from home?

To view your wireless system remotely, your NVR will need to be manually connected to a modem/router via the included Ethernet cable. You can view your system via the FREE Night Owl X or Night Owl X HD Apps or by utilizing the FREE Night Owl X CMS software on a PC/Mac®.

3. How do the cameras transmit video to the NVR?

Our wireless NVRs have built-in Wi-Fi for communicating with the cameras. Each camera comes paired to the wireless NVR by default, so your initial setup should be hassle free. **NOTE: Add-on cameras will come in pairing mode and will need to be paired to the NVR.**

4. Are my cameras weatherproof?

CAM-WNR2P-OU cameras are weatherproof (not waterproof) and will endure minimal moisture and dirt/debris. However, Night Owl strongly recommends placing all outdoor cameras under an eave or awning to help shield them from overexposure to the elements, which could reduce your camera's lifespan. **CAM-WNVR2P-IN** cameras are for indoor use **ONLY** and are **NOT** to be used outdoors.



For system manuals, troubleshooting guides, FAQs, video tutorials and more:

- 1 Please visit www.NightOwlSP.com.
- 2 Click the Support tab.
- 3 Enter your product's model number in the search bar.
- 4 Access the support material needed.



CONTACT US

PHONE (English, Spanish & French)

Sales/Technical Support

1.866.390.1303

Live Chat 24/7, 365 days a year

EMAIL

Sales Support

Sales@NightOwlSP.com

Technical Support

Support@NightOwlSP.com

WEBSITE

24/7 Product Support

- How-To Videos
- Manuals



www.NightOwlSP.com



iPhone, iPad, Mac and Mac OS X are registered trademarks of Apple Inc. Windows, Windows XP, Windows Vista, Windows 7, Windows 8 and Windows 10 are registered trademarks of Microsoft Corporation in the United States and/or other countries.

FCC RADIATION NORM

FCC

This device complies with Part 15 of the FCC Rules. Operation is subject to the following two conditions: (1) this device may not cause harmful interference, and (2) this device must accept any interference received, including interference that may cause undesired operation.

FCC Compliance Statement

These limits are designed to provide reasonable protection against frequency interference in residential installation. This equipment generates, uses, and can radiate radio frequency energy, and if not installed or used in accordance with the instructions, may cause harmful interference to radio communication. However, there is no guarantee that interference will not occur in television reception, which can be determined by turning the equipment off and on. The user is encouraged to try and correct the interference by one or more of the following measures:

- Reorient or relocate the receiving antenna.
- Increase the separation between the equipment and the receiver.
- Connect the equipment into an outlet on a circuit different from that to which the receiver is connected.
- Consult the dealer or an experienced radio/TV technician for help.

CAUTION!

The Federal Communications Commission warns the user that changes or modifications to the unit not expressly approved by the party responsible for compliance could void the user's authority to operate the equipment.

This equipment should be installed and operated with minimum distance 20cm between the radiator & your body.

Rev 170804