

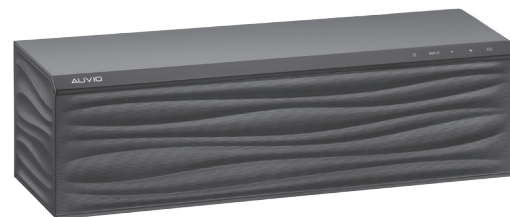


Ultra-Compact Soundbar HBT18600SE

Please read this user's guide before using your new soundbar.

User's Guide

4000459




Package Contents

- Soundbar
- AC Adapter
- RCA Cable
- AC Power Cord
- Remote Control
- User's Guide


Features

- Provides powerful sound to enhance your listening experience
- Sonic Emotion Absolute 3D technology* produces rich, full sound that permeates every inch of your room
- Compatible with most Bluetooth®-enabled devices with iOS or Android™ platform
- Remote for convenient controlling from a distance

*  *Sonic Emotion Absolute 3D is the listening experience.*

Important Safety Instructions

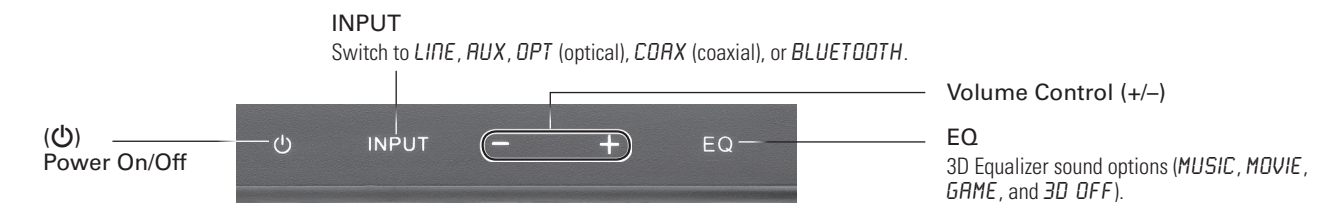
1. Read these instructions. Keep these instructions.
2. Heed all warnings.
3. Follow all instructions.
4. Do not use this soundbar near water.
5. Clean only with dry cloth.
6. Do not block any ventilation openings. Install in accordance with the manufacturer's instructions.
7. Do not install near any heat sources such as radiators, heat registers, stoves, or other apparatus (including amplifiers) that produce heat.

8. Protect the power cord from being walked on or pinched, particularly at plugs, convenience receptacles, and the point where it exits the soundbar.
9. Use only attachments/accessories specified by the manufacturer.
10. Use only with the cart, stand, tripod, bracket, or table specified by the manufacturer, or sold with the soundbar. When a cart is used, use caution when moving the cart/soundbar combination to avoid injury from tip-over. 
11. Unplug this soundbar during lightning storms or when unused for long periods of time.
12. Refer all servicing to qualified service personnel. Servicing is required when the soundbar has been damaged in any way, such as if the power-supply cord or plug is damaged, liquid has been spilled or objects have fallen into the soundbar, it has been exposed to rain or moisture, it does not operate normally, or it has been dropped.

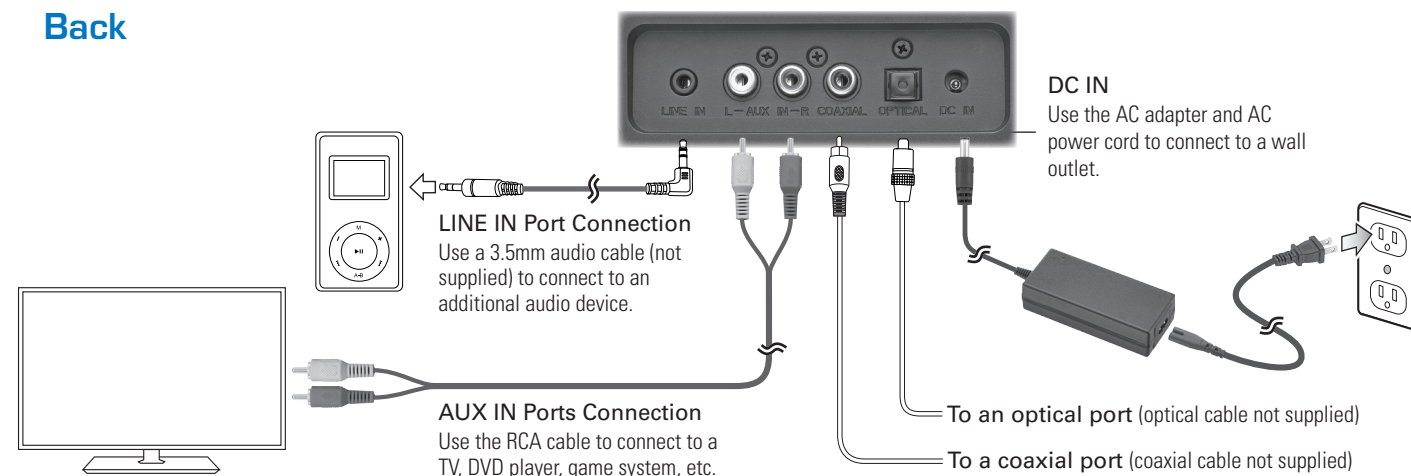
Warnings and Precautions

- To reduce the risk of electric shock, do not remove cover (or back). There are no user-serviceable parts inside.
- Do not expose the soundbar to dripping or splashing liquids. Do not place objects filled with liquids (such as vases) on the soundbar.
- The power plug is used as the disconnect device. It shall remain readily operable and should not be obstructed during intended use. To completely disconnect the soundbar from the power supply, the power plug of the product shall be disconnected from the wall outlet completely.
- Using the soundbar near fluorescent lighting may cause interference with the remote. If the soundbar is behaving erratically, move away from any fluorescent lighting.


Front




Back



Using the Soundbar

1. Turn on your device and turn down its volume.
2. Press  to turn on the soundbar, and turn down its volume.
3. Press **INPUT** to switch to *LINE, AUX, OPT (optical), COAX (coaxial), or BLUETOOTH* mode. You can also press **BLUETOOTH** on the remote to enter to Bluetooth mode directly.
4. Press **EQ** to choose a sound option or press **MUSIC, MOVIE, GAME, or OFF** on the remote. You can further customize each option by adjusting **BASS +/-** and **TREBLE +/-**.
5. After starting playback on your connected device, adjust the soundbar volume to a comfortable level.

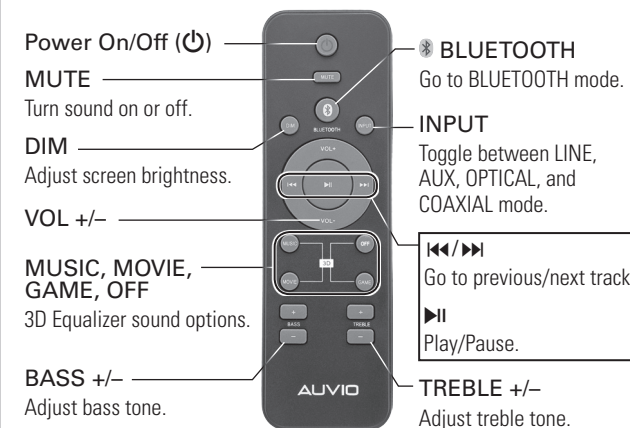
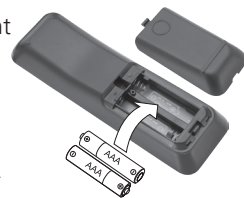
 **Note:** The soundbar enters standby mode if you pause it for more than 15 minutes or if the Bluetooth connection is broken for 15 minutes.

Using the Bluetooth Function

1. After you turn on the soundbar and switch to Bluetooth mode (*BLUETOOTH* scrolls on the display), the soundbar searches for a Bluetooth-enabled device (*BT PAIRING* scrolls on the display).
2. Activate your device's Bluetooth function (refer to your device's user's guide).
3. When **AUVIO HBT18600SE** appears in the Bluetooth devices list, pair it to your device. If you are prompted for a PIN, enter 0000.

Using the Remote Control

1. Open the battery compartment and install two AAA batteries (not included), matching the polarity symbols (+ and -) marked inside.
2. Point the remote at the center of the soundbar to control it.



Note: During Bluetooth connection, if you need to pair your soundbar to other Bluetooth devices, press and hold the **BLUETOOTH** button on the remote. The current Bluetooth connection is interrupted, and the soundbar starts searching for other Bluetooth devices.

Battery Notes:

- Dispose of batteries promptly and properly. Do not burn or bury them. Use only fresh batteries of the required size and type.
- Do not mix old and new batteries, different types of batteries (standard, alkaline, or rechargeable), or rechargeable batteries of different capacities.
- If you do not plan to use the remote control for a long time, remove the batteries. Batteries can leak chemicals that can damage electronic parts.

Specifications

Power Input	DC 15V, 4A
Output (RMS)	10W × 6
Frequency Response	65 Hz – 18 kHz
Drivers	75mm × 2, 70mm × 2, 50mm × 2
Bluetooth Connection Range	30 ft. (9.1m)
Bluetooth Protocol	V2.1 + EDR Class 2
Dimensions (WHD)	18 × 4.6 × 5 in

Specifications are subject to change and improvement without notice. Actual product may vary from the images found in this document.

Troubleshooting

Problem	Solution
No sound and display	Makes sure the power supply is plugged into a working outlet and firmly connected to the soundbar.
Distorted sound	Check your source device to see if it is causing the distortion. Set the device and soundbar volume to a low level.
Unbalanced sound	If the volume remains low even when the soundbar's volume is turned all the way up, check the source device to make sure it is connected via a variable output. Make sure the output is not turned down too low.
Bluetooth function failure	<ul style="list-style-type: none"> ■ Avoid electromagnetic interference or interference caused by other Bluetooth devices. ■ Make sure your Bluetooth device supports audio transfer, is discoverable and has its volume turned up. ■ If the connected device moves too far away from the soundbar, the soundbar disconnects from the device. Move the device close. The connection resumes automatically. ■ In Bluetooth mode but without Bluetooth connection, press and hold EQ on the soundbar or BLUETOOTH on the remote control to clear the list of devices paired to the soundbar. Then pair the soundbar to your device again. ■ Disconnect power, then connect power again and turn on the soundbar.

FCC Information

This equipment has been tested and found to comply with the limits for a Class B digital device, pursuant to Part 15 of the FCC Rules. These limits are designed to provide reasonable protection against harmful interference in a residential installation. This equipment generates, uses and can radiate radio frequency energy and, if not installed and used in accordance with the instructions, may cause harmful interference to radio communications. However, there is no guarantee that interference will not occur in a particular installation. If this equipment does cause harmful interference to radio or television reception, which can be determined by turning the equipment off and on, the user is encouraged to try to correct the interference by one or more of the following measures:

- Reorient or relocate the receiving antenna.
- Increase the separation between the equipment and receiver.
- Connect the equipment into an outlet on a circuit different from that to which the receiver is connected.
- Consult the dealer or an experienced radio/TV technician for help.

If you cannot eliminate the interference, the FCC requires that you stop using your product. Changes or modifications not expressly by the party responsible for compliance could void the user's authority to operate the equipment.

This device complies with Part 15 of the FCC Rules. Operation is subject to the following two conditions: (1) This device may not cause harmful interference, and (2) this device must accept any interference received, including interference that may cause undesired operation.

Limited Warranty

Ignition L.P. warrants this product against defects in materials and workmanship under normal use by the original purchaser for **one (1) year** after the date of purchase. IGNITION L.P. MAKES NO OTHER EXPRESS WARRANTIES.

This warranty does not cover: (a) damage or failure caused by or attributable to abuse, misuse, failure to follow instructions, improper installation or maintenance, alteration, accident, Acts of God (such as floods or lightning), or excess voltage or current; (b) improper or incorrectly performed repairs by persons who are not a Ignition L.P. Authorized Service Facility; (c) consumables such as fuses or batteries; (d) ordinary wear and tear or cosmetic damage; (e) transportation, shipping or insurance costs; (f) costs of product removal, installation, set-up service, adjustment or reinstallation; and (g) claims by persons other than the original purchaser.

Should a problem occur that is covered by this warranty, take the product and the sales receipt as proof of purchase date to the place of purchase. Ignition L.P. will, at its option, unless otherwise provided by law: (a) repair the product without charge for parts and labor; (b) replace the product with the same or a comparable product; or (c) refund the purchase price. All replaced parts and products, and products on which a refund is made, become the property of Ignition L.P. New or reconditioned parts and products may be used in the performance of warranty service. Repaired or replaced parts and products are warranted for the remainder of the original warranty period. You will be charged for repair or replacement of the product made after the expiration of the warranty period.

IGNITION L.P. EXPRESSLY DISCLAIMS ALL WARRANTIES AND CONDITIONS NOT STATED IN THIS LIMITED WARRANTY. ANY IMPLIED WARRANTIES THAT MAY BE IMPOSED BY LAW, INCLUDING THE IMPLIED WARRANTY OF MERCHANTABILITY AND, IF APPLICABLE, THE IMPLIED WARRANTY OF FITNESS FOR A PARTICULAR PURPOSE, SHALL EXPIRE ON THE EXPIRATION OF THE STATED WARRANTY PERIOD.

EXCEPT AS DESCRIBED ABOVE, IGNITION L.P. SHALL HAVE NO LIABILITY OR RESPONSIBILITY TO THE PURCHASER OF THE PRODUCT OR ANY OTHER PERSON OR ENTITY WITH RESPECT TO ANY LIABILITY, LOSS OR DAMAGE CAUSED DIRECTLY OR INDIRECTLY BY USE OR PERFORMANCE OF THE PRODUCT OR ARISING OUT OF ANY BREACH OF THIS WARRANTY, INCLUDING, BUT NOT LIMITED TO, ANY DAMAGES RESULTING FROM INCONVENIENCE AND ANY LOSS OF TIME, DATA, PROPERTY, REVENUE, OR PROFIT AND ANY INDIRECT, SPECIAL, INCIDENTAL, OR CONSEQUENTIAL DAMAGES, EVEN IF IGNITION L.P. HAS BEEN ADVISED OF THE POSSIBILITY OF SUCH DAMAGES.

Some states do not allow limitations on how long an implied warranty lasts or the exclusion or limitation of incidental or consequential damages, so the above limitations or exclusions may not apply to you. This warranty gives you specific legal rights, and you may also have other rights which vary from state to state. You may contact Ignition L.P. at:

Ignition L.P.,
3102 Maple Ave., Suite 450,
Dallas, TX 75201

02/09

For product support, call
1-866-315-0426

RoHS COMPLIANT Complies with the European Union's "Restriction of Hazardous Substances Directive," which protects the environment by restricting specific hazardous materials and products.

The Bluetooth® word mark and logos are owned by Bluetooth SIG, Inc. and any use of such marks by Ignition L.P. is under license. Other trademarks and trade names are those of their respective owners.

Sonic Emotion and are registered trademarks of sonic emotion ag.

Android is a trademark of Google Inc.

iOS is a trademark or registered trademark of Cisco in the U.S. and other countries and is used under license.

© 2013. Ignition L.P. All rights reserved. Avuio is a registered trademark used by Ignition L.P.

Package and user documentation are recyclable. User documentation contains recycled material.

