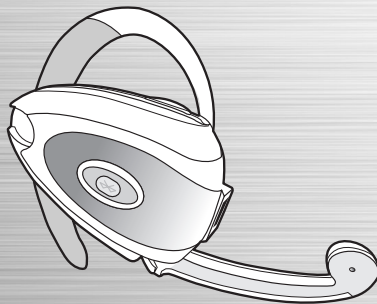


CE 0197  Bluetooth®

Bluetooth® Headset **TENDYSTAR**

Bluetooth® Headset **TENDYSTAR**

MODEL : N2



User's Guide

Contents

Introduction	2
Headset features	3
Charging	4
Wearing the headset	4
Using the headset	
·To turn the headset on	5
·Turning the headset off	5
·Pairing the headset	6
·Making a call	6
·Redial the last number	7
·Voice Dialling	7
·Ending a call.....	7
·Answering a call	7
·Adjusting the volume	8
·Transferring a call from the Headset to the device	8
·Transferring a call from the device to the Headset	8
·How to change the housing	8
Limited Warranty.....	9
Disclaimer	10

The N2 headset is a wireless headset based on Bluetooth® technology.

Bluetooth® technology is a standard for wireless short distance radio communications. Devices such as a headset and a mobile phone or PDA, can communicate with each other without wires over a distance of approximately 10 meters.

The N2 is a Bluetooth® headset that supports two profiles: The Headset profile and the Hands-Free profile.

It will work with any qualified Bluetooth® device that supports the Headset profile or the Hands-Free profile. The N2 headset can be used with a qualified Bluetooth® mobile phone or PDA*

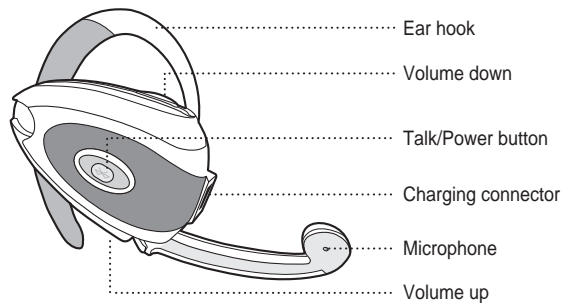
(*) or another Bluetooth® device supporting the Headset or Hands-Free profile. This user guide focuses on the use of this Bluetooth® headset with a Bluetooth® mobile phone.

Your N2 will allow you to receive and make a call, adjust volume, without touching your mobile device.

Bluetooth® is a trademark owned by Bluetooth SIG, Inc. and is used by the manufacturer under its license term.

All brand names are the property of their respective owners.

Headset features



In the package



N2



Charging cable



Housings



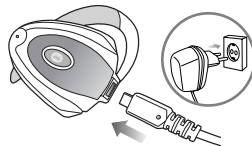
User's guide

Charging / Wearing the headset

Charging

When you receive your headset the battery will not be completely charged.

Before using the headset for the first time you should fully charge the battery with the supplied charger.

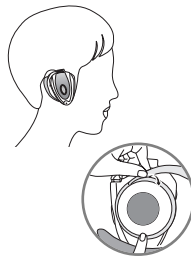


Wearing the headset

You can put on the N2 Bluetooth[®] headset either on your left or right ear. To change ear, hold the headset firmly and pull the ear hook away from the post on the back of the unit. Turn the ear hook over and replace on the small post.

To wear the headset:

extend the ear hook then slip it over the top of your ear, manoeuvre the speaker gently into your ear, squeeze the ear hook closed until the headset is held securely on your ear.



Using the headset

To turn the headset on

Press and hold the Talk button for 2~3 seconds, then the indicator light flashes according to the status of headset. (LED indication to check status.)

Turning the headset off

Press and hold the Talk button for 5 seconds, the indicator light stops flashing.

LED indications

Headset Status	LED indication
Pairable	v-v-v-v-v-v-v-v
Not Connected	---v---v---v---v
Connected	vvvv-vvvv-vvvv-
Audio Connected	vvvvvvvvvvvvvv

v:light on, -:light out

Pairing the headset

Before you use Bluetooth® devices, some informations such as Bluetooth® address, pass code should be registered to both devices you are going to use. This process is called pairing. Once you have paired two devices, you don't need to do this again until you want to use the headset with another device.

1. When you turn on, the headset is basically in waiting status.
Press and hold the Volume Up/Down buttons at the same time until the headset light rapidly flashes.
2. Now, the headset is in pairing mode.
3. With your mobile device, search for headset as instructed in the device's user guide.
4. Enter the headset passkey of 0000.
5. The N2 Bluetooth® headset will now be ready to use with your mobile device.

Making a call

Dial a phone number on the mobile device's keypad.
Press the Send/Call key.
The call will automatically be transferred to the headset by pressing the Talk button.

Using the headset

Redial the last number

When not in a call, press the Talk button until you hear the first beep.

Voice Dialling

Ensure the headset is on and paired with a mobile device.

Voice tags must have been recorded.

When not in a call, press and hold the Talk button for a second until you hear the second beep, and say one of your recorded voice tags.

The device will dial the number associated with the voice tag.

Ending a call

To end a call, press the Talk button during a call.

Answering a call

Once you hear an incoming call ring in the headset press the Talk button.

Adjusting the volume

During a call press the Volume up or Volume down button to increase or decrease the volume. A beep will be heard for each step.

Transferring a call from the Headset to the device

Refer to your device's user manual.

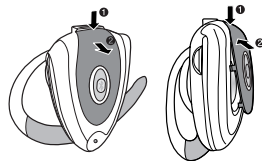
Transferring a call from the device to the Headset

During a call press the Talk button.

How to change the housing

You can pull out the existing housing from the groove at the top of the headset.

Then, fix the included different colored housing into the headset unit from the upper gap to the side & lower gap in a row.



Limited Warranty

1. This product was produced under strict quality management and inspection.
2. All defective units within the applicable Warranty period/s will be repaired or replaced, in the case those faulty goods were handled normally.
3. To get Warranty service, return the unit to the outlet from which the unit was purchased.
4. Fill in this Warranty card and keep it.
5. Free of charge Warranty shall not apply to :
 - Defects or damage resulting from use of the unit in other than its normal and intended manner, eg, in excess of their maximum specifications or operating instructions.
 - Defects or damage from misuse, accident, neglect, improper testing, installation, alteration or modification of any kind, or spillage of food or liquid.

Products name :

Model number :

Purchased date:

Warranty period : 1year

Outlet the unit was purchased :

Tel :

Customer

Address:


Name :

Tel :

Disclaimer

MODEL : N2

The headset described in this guide is approved to be compliant with the Bluetooth® Specification and its profiles.

 Bluetooth® is a trademark owned by Bluetooth SIG. All brand names are the property of their respective owners.

FCC NOTICE TO USERS : FCC ID TNNN2

< NOTICE >

● Section 15.19 Labelling requirements

This device complies with part 15 of the FCC rules.

Operation is subject to the following two conditions:

- (1) This device may not cause harmful interference and
- (2) This device must accept any interference received, including interference that may cause undesired operation.

● Section 15.21 Information to user

The changes or modifications not expressly approved by the party responsible for compliance could void the user's authority to operate the equipment.

● **IMPORTANT NOTE:** To comply with the FCC RF exposure compliance requirements, no change to the antenna or the device is permitted. Any change to the antenna or the device could result in the device exceeding the RF exposure requirements and void user's authority to operate the device.