

CT-1BLF Rugged Active Tag for Container Tracking

Product Overview

The CT-1BLF is a ruggedized Active Tag specially developed for placing on Totes and other such Containers, for tracking and location in the manufacturing and warehousing environment.

The CT-1BLF contains a UHF transmitter and a Low Frequency (LF) Receiver, so as to enable transmission of Beacon signals, and to be able to detect signals from GuardRFID's Tag Exciters. This combination enables the Tag to be tracked and located in real time, as well as allowing for instant detection of the Tag at choke points, such as Dock doors, so as to provide real-time information of movement of Containers through such doors. This detection method also supports applications where access control is required, as each Tag has a unique identity and can be configured to have its own rules pertaining to discovery and access privileges.

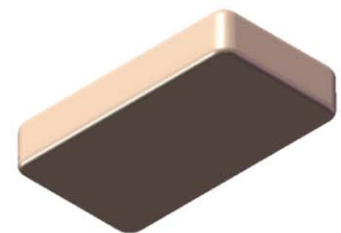
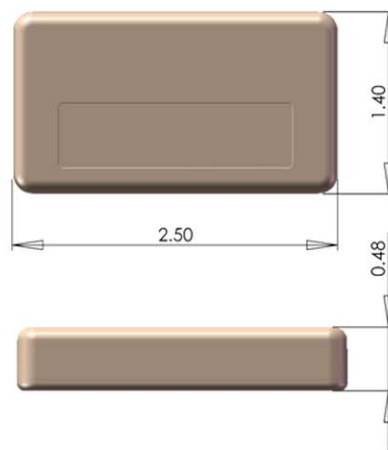
Transmission of data from the Tags is exceptionally rapid, allowing literally hundreds of Tags to be detected simultaneously at choke points, and also enabling a high density of Tags to coexist within the system coverage area.

Application

The CT-1BLF is designed to be either mounted using an adhesive "peel and stick" label at the back of the Tag, or by employing an adhesive such as an Epoxy glue.

The Tag is also specially designed to fit within the slots of the rim of the majority of standard Containers, so as to make them inconspicuous as well as unobtrusive. The CT-1BLF may be placed on metal objects, with little degradation of its performance.

Physical Features



Specifications:

Tag Battery Life: 48 months
Beacon Interval: 5 minutes
Communications Range: 150 ft
Dimensions: 2.5" x 1.4" x 0.48"
Weight: 12 g
Environmental: -30° to +50°C
Waterproof

This device complies with part 15 of the FCC Rules. Operation is subject to the following two conditions:

1. This device may not cause harmful interference.
2. This device must accept any interference received, including interference that may cause undesired operation.

NOTE: GuardRFID is not responsible for any radio or TV interference caused by unauthorized modifications to this product or its derivatives. Such modifications could void the user's authority to use the product.

The CT-1BLF Tag is manufactured exclusively for Signcraft Screenprint and Vitale Strategic Sourcing, who are the exclusive distributors of this product.