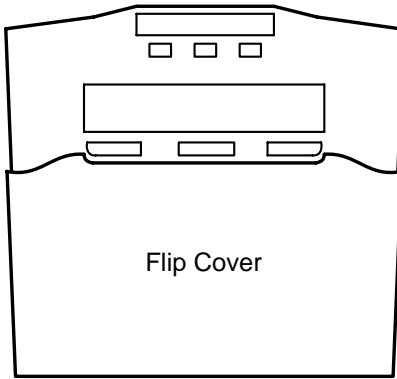


21-3610 rev1.4

xL LCD Keypad Installation Instructions

The LCD keypad provides the ability to operate the entire Monitor xL™ or Chubb AFx™ system. It will also provide readouts of the status of the systems and location and nature of alarms.



Flip Cover

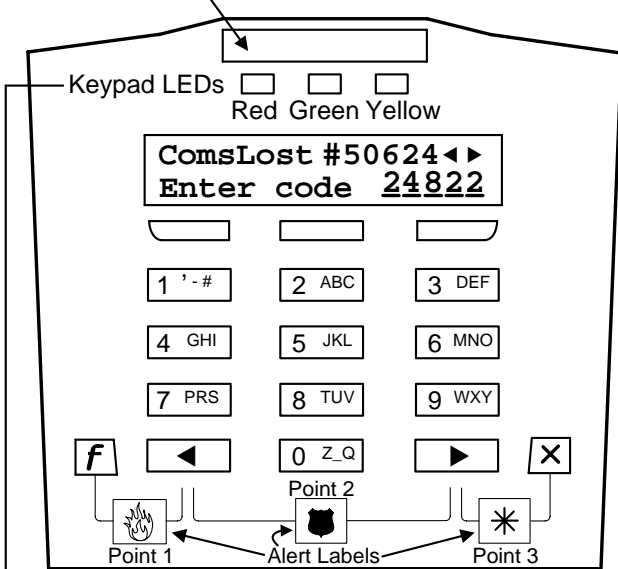
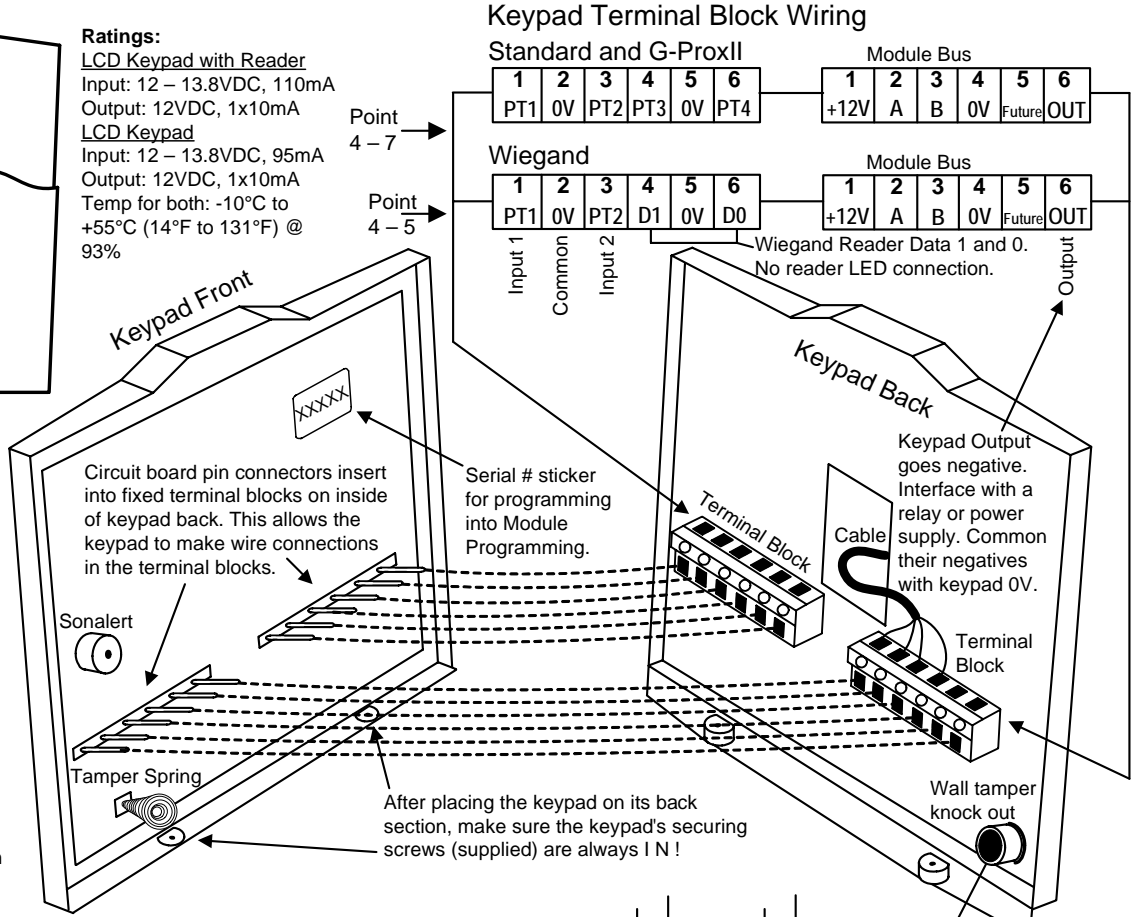
Ratings:

LCD Keypad with Reader
 Input: 12 – 13.8VDC, 110mA
 Output: 12VDC, 1x10mA
LCD Keypad
 Input: 12 – 13.8VDC, 95mA
 Output: 12VDC, 1x10mA
 Temp for both: -10°C to +55°C (14°F to 131°F) @ 93%

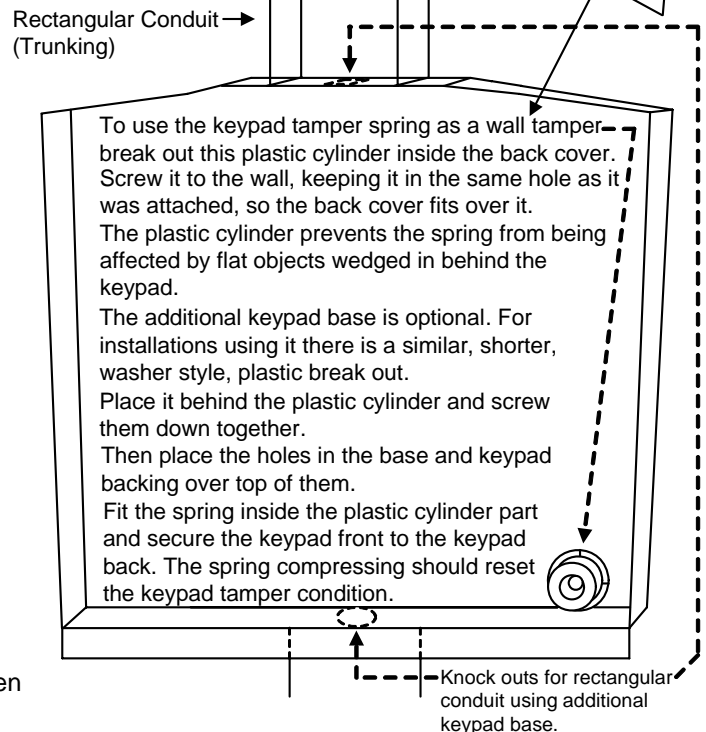
Module Point Assignment: 8 points.

First point: Fire Alert buttons
 Second point: Panic (Hold-Up) buttons
 Third point: Auxiliary Alert buttons
 Points 4 – 7 are hard wire inputs 1 – 4 on the Standard and G-ProxII version.
 Points 4 – 5 are hard wire inputs 1 – 2 on the Wiegand version. All unused points are skipped.

Apply dealer's logo label (supplied) in the indented space at the top of the keypad. Apply the Alert Button labels as required.



Red Flashing: Protection ON
 Green On Always with power present.
 Yellow On when trouble condition present. Flashing when there is no AC mains.
 Solid: Partial protection (STAY)



21-3610 rev1.4**xL LCD Keypad Installation Instructions**

3 Keypad Versions

- LCD Keypad P/N 111-3610 (white), 111-3620 (gray): standard keypad includes 3 programmable alert button inputs, 4 hardwire alarm input points and 1 output point.
- LCD Keypad with internal RF reader P/N 111-3611 (white), 111-3621 (gray): keypad includes 3 programmable alert button inputs, 4 hardwire alarm input points and 1 output point. Includes a built-in RF G-Prox reader.
- LCD with external Wiegand reader Keypad P/N 111-3612 (white), 111-3622 (gray): keypad includes the capability to connect an external Wiegand reader to it. Keypad includes 3 programmable alert button inputs, 2 hardwire alarm input points and 1 output point.

NOTE: – Double or triple card touch (badge) to LCD with external reader is the equivalent of hold a card (badge) feature at the LCD with internal reader to e.g. turn protection on and off.

– GProxII and MIFARE readers have been proven to work acceptably when connected to the LCD with external reader.

All versions

- Communicate with the main control unit on the SNAPP module bus.
- Backlit, 2x16 LCD display.
- Colours: white, grey.

For further keypad information, please see the Monitor xL™ or Chubb AFx™ Simplified or Advanced Installation and LCD Keypad User Guides.

NORTH AMERICA: FCC Compliance Statement: This device complies with Part 15 of the FCC Rules. Operation is subject to the following two conditions: (1) This device may not cause harmful interference, and (2) This device must accept any interference received, including interference that may cause undesired operation.

This equipment has been tested and found to comply with the limits for a Class B digital device, pursuant to the limits for a Class B digital device, pursuant to part 15 of the FCC Rules. These limits are designed to provide reasonable protection against harmful interference in a residential installation. This equipment generates, uses, and can radiate radio frequency energy and, if not installed and used in accordance with the instructions, may cause harmful interference to radio communications. However, there is no guarantee that interference will not occur in a particular installation. If this equipment does cause harmful interference to radio or television reception, which can be determined by turning the equipment off and on, the user is encouraged to try to correct the interference by one or more of the following measures:

- Reorient or relocate the receiving antenna.
- Increase the separation between the equipment and the receiver.
- Connect the equipment into an outlet on a circuit different from that to which the receiver is connected.
- Consult the dealer or an experienced radio/TV technician for help.

WARNING: Changes or modifications not expressly approved by GUARDALL could void the user's authority to operate this equipment.

Canadian Compliance Statement: This Class B digital apparatus complies with Canadian ICES-003.

EUROPE: This equipment has been tested and found to comply with the CE directive and standards for ITE equipment used in commercial and heavy industrial applications.